



Appendix A-3 Public Meeting Presentation

June 2022

February/March 2022

New River Valley Passenger Rail Station Feasibility Study

Public Meeting

**VIRGINIA
PASSENGER RAIL
AUTHORITY**



**TRANSFORMING
RAIL IN VIRGINIA**

How this works

- Meeting is being recorded to gather questions and comments
- Presentation is:
 - Pre-recorded
 - Synopsis of detailed information available on the website
- Questions and Answers:
 - Entered in the live event Q&A box
 - Answered following the presentation
 - Live session following presentation question responses
- Comments:
 - Entered in the live event Q&A box
 - Provided during live session

Study Outreach

- Press Release – November 2021
- Study Website – December 2021
- Social Media Campaign – December 2021 to present
- Public Survey 1 – December 22, 2021, to January 31, 2022
- Potentially impacted property owners
 - January 25 to February 11, 2022
- Key Stakeholders
 - Government Officials – February 9, 2022
 - Universities & Businesses – February 7, 2022
 - Interest Groups – February 10, 2022
- Public Meetings – February 28 and March 1, 2022

Virginia Passenger Rail Authority

- Created by 2020 General Assembly
- Given all powers necessary for carrying out its statutory purposes:
 - Design, build, finance, and maintain rail facilities
 - Direct recipient of USDOT Grants
 - Eminent domain powers
- Will own all rail assets and right of way
- Will partner with others to operate passenger and commuter rail service
- Governed by a 15-Member Board



Transforming Rail in Virginia

December 19, 2019

Virginia, CSX, Amtrak, and VRE announce landmark rail initiative, with end goal to separate freight and passenger service.

March 30, 2021

Virginia, Amtrak, VRE, CSX & US DOT Secretary Buttigieg announced the signing of the Definitive Agreements.

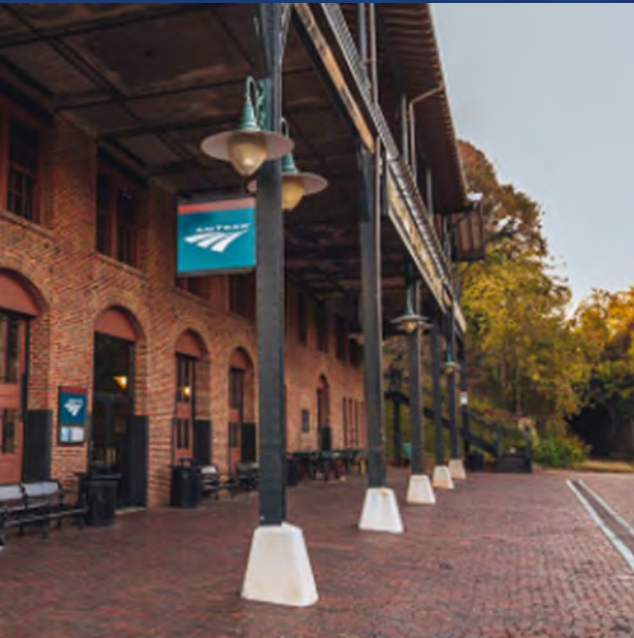
May 5, 2021

Agreement with Norfolk Southern Railway (NSR) to expand to New River Valley announced.

January 10, 2022

Definitive agreements between VPRA & NSR were finalized on January 10th, with financial close coming in mid-2022 after further regulatory and other due diligence is complete.





Norfolk Southern Agreement: Roanoke Route Background

- Amtrak Regional daily service began in October 2009 with one round trip between Lynchburg and Boston - annual ridership forecast of 33,100.
- Service more than tripled the ridership forecast in the first full year.
- Service expanded to Roanoke in November 2017.
- Route carried over 220,000 passengers in 2019.



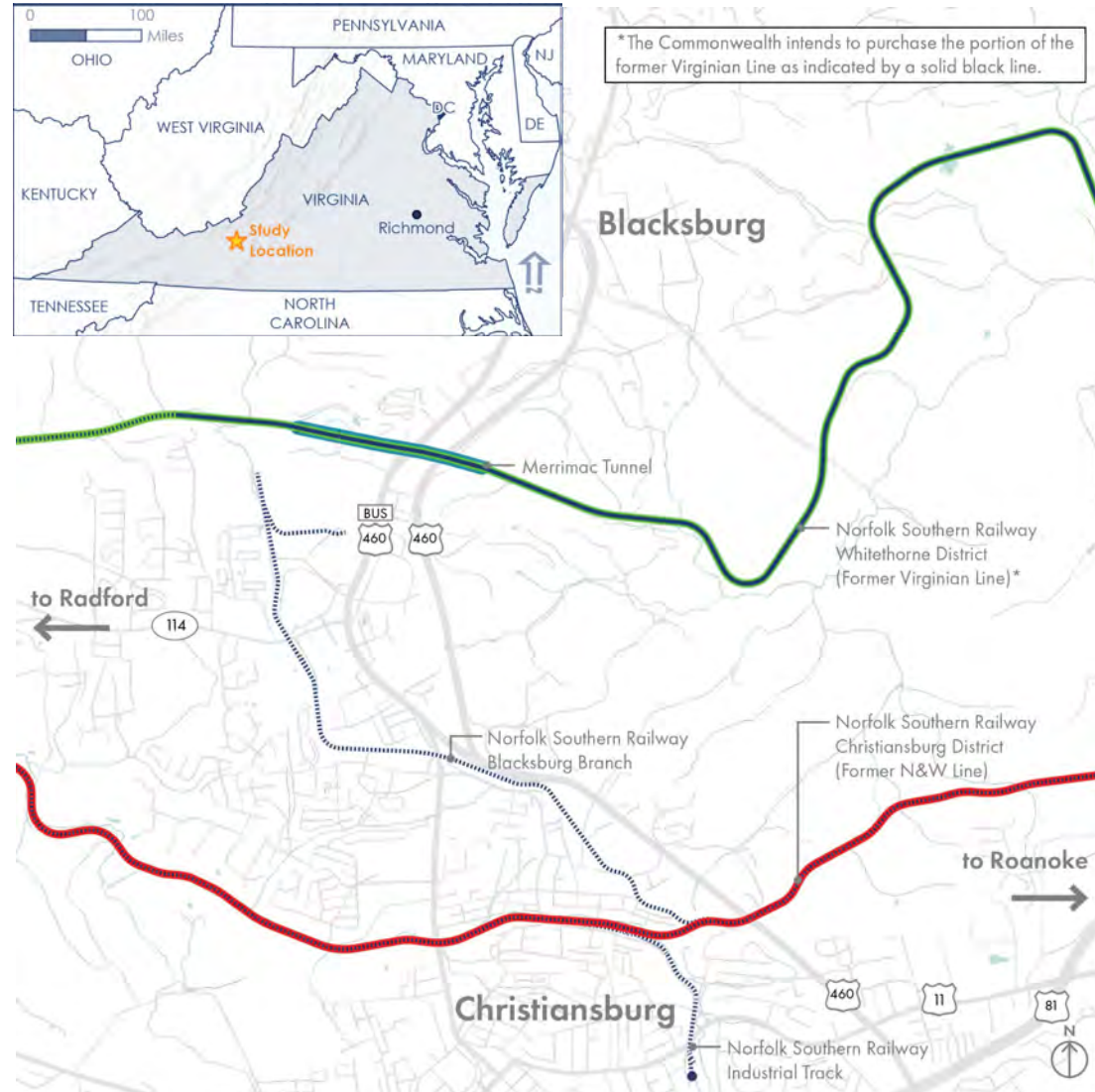
- Term Sheet signed in April 2021 with NS will allow a second Roanoke train and an extension to the New River Valley once certain infrastructure projects are complete.
- Virginia purchasing 28 miles of the Virginian Line from Norfolk Southern.

Improvements: Manassas to the New River Valley

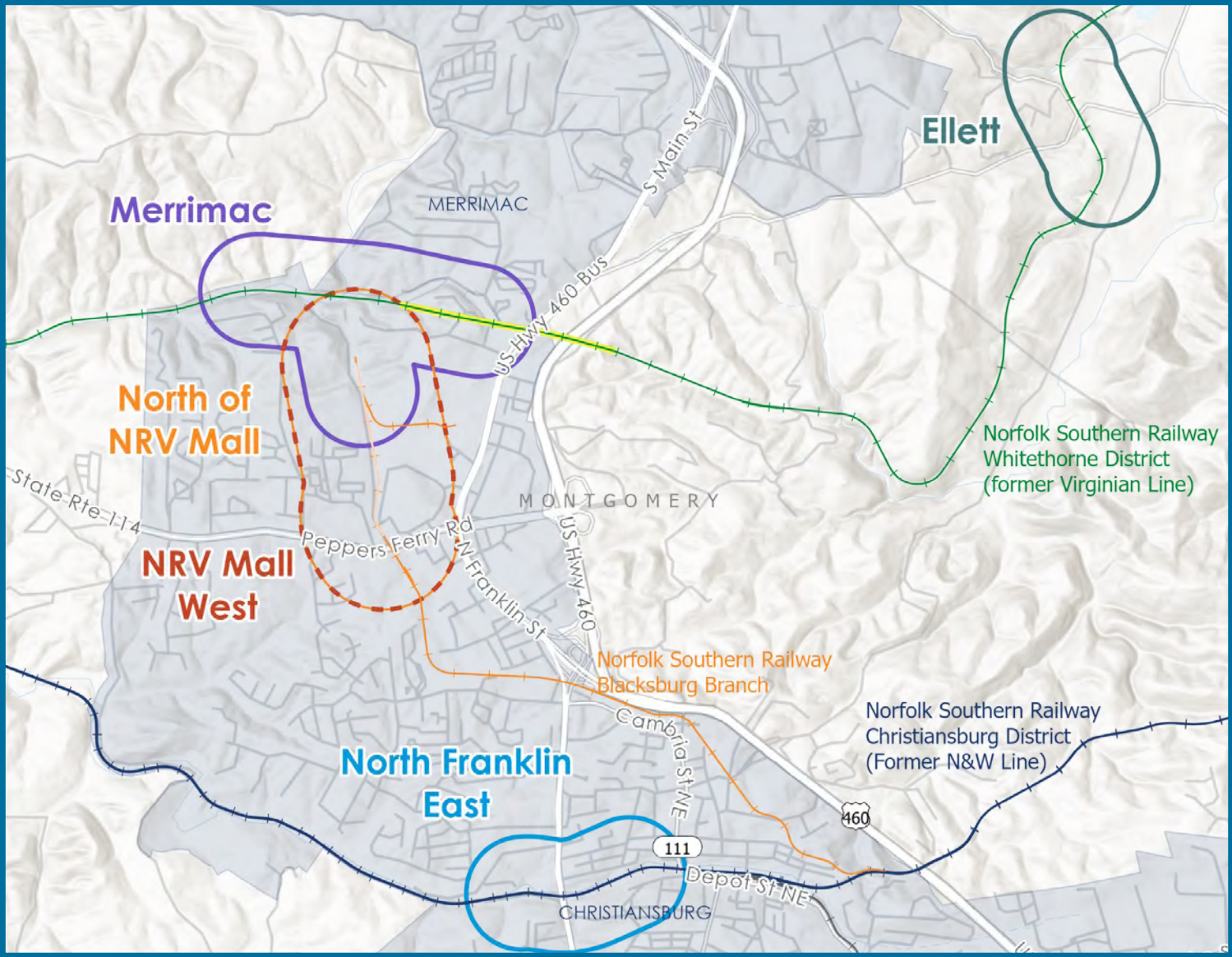
- Over \$200M worth of capital improvements.
- 80,000 net new riders estimated in first year after the extension to the New River Valley.
- Passenger Service to the New River Valley for the first time since 1979.



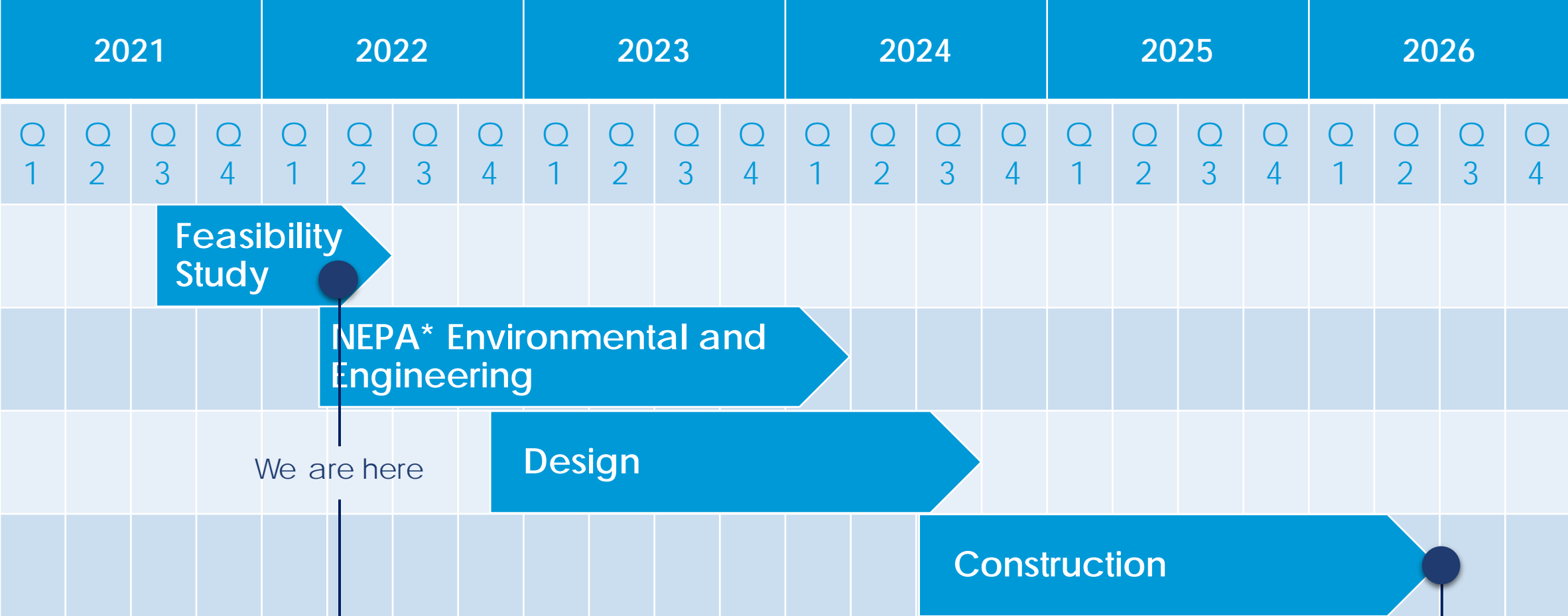
New River Valley Study Area & Rail Corridors



Passenger Rail Station Alternative Study Areas



Project Timeline

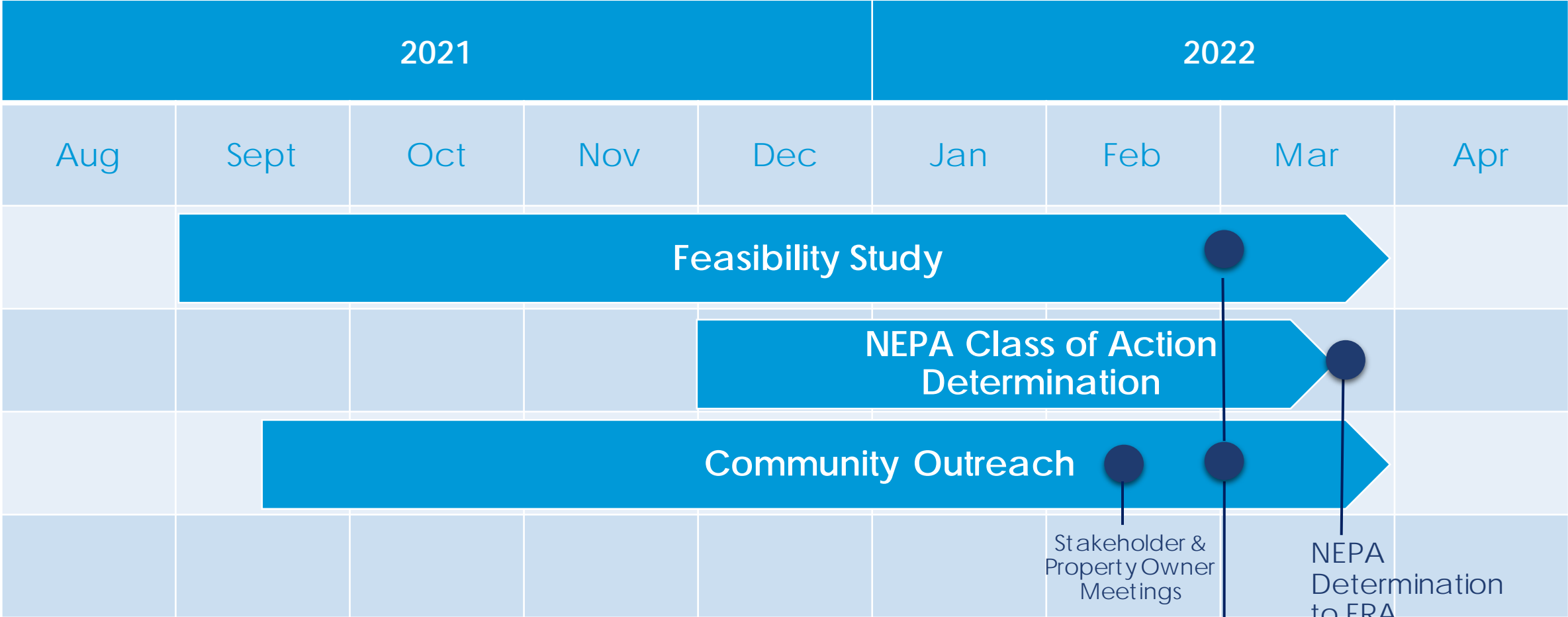


We are here

Station Opening

*National Environmental Policy Act (NEPA)

Feasibility Study Timeline

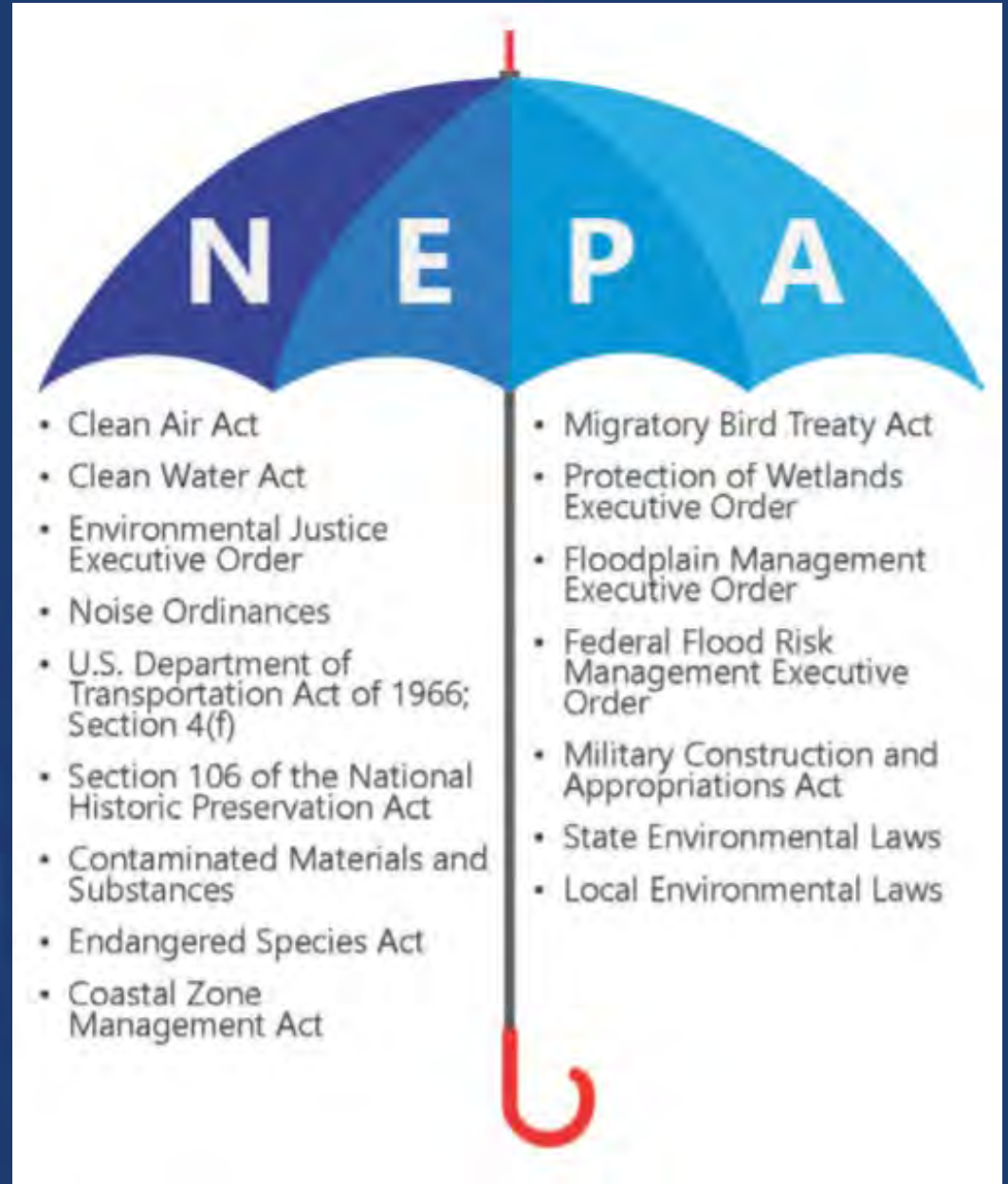


Public Meetings
*We are here

What is NEPA?

The National Environmental Policy Act of 1969 (NEPA) requires Federal agencies to assess the environmental effects of their proposed actions prior to making decisions.

NEPA encourages integrated compliance with other environmental laws so that a proposed project's impacts are comprehensively evaluated before implementation.



Objectives of the Study

Step 1

Determine technical feasibility of potential future passenger rail stations in the NRV



Step 2

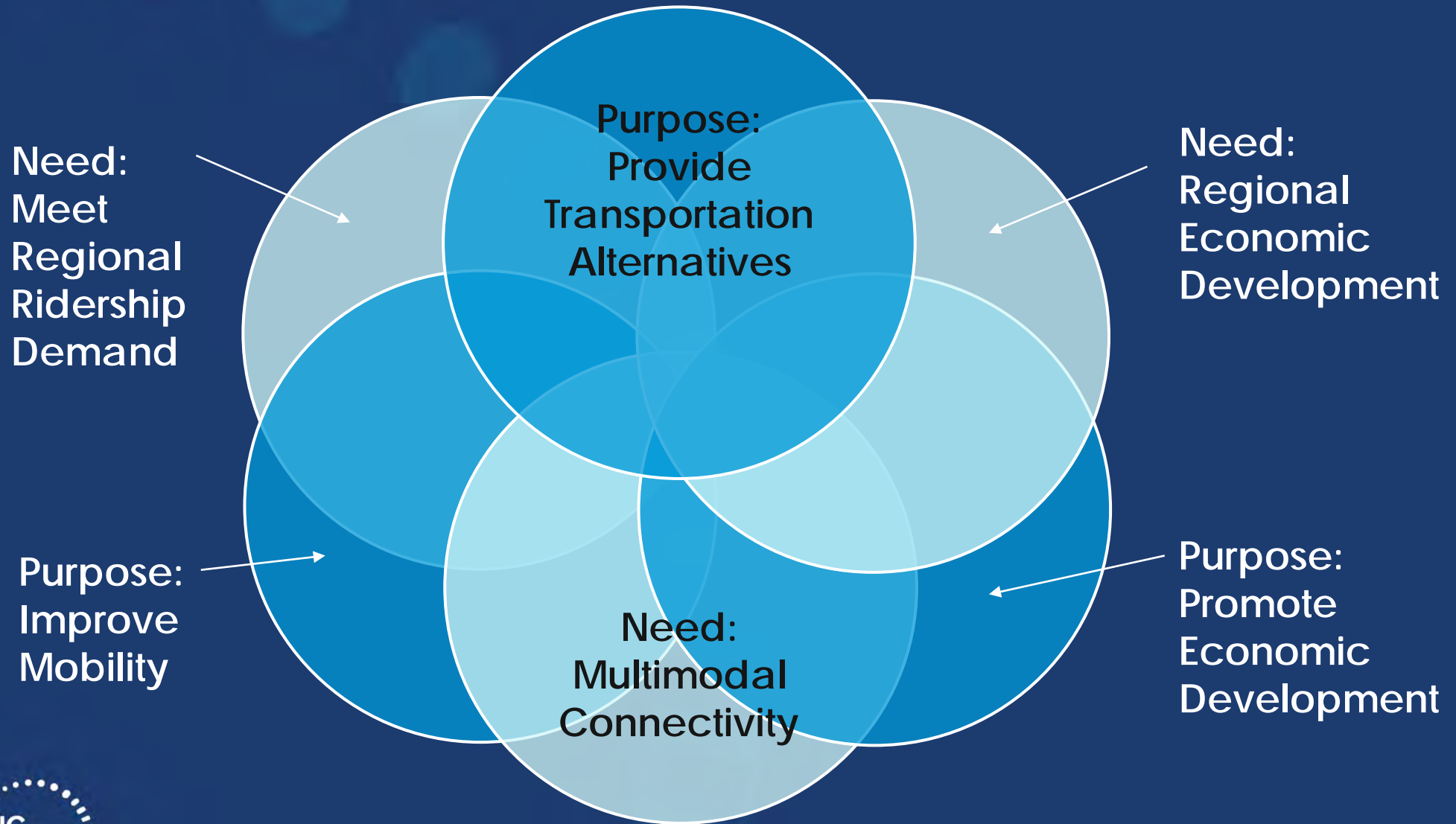
Develop a Purpose & Need Statement to complete screening analysis of sites



Step 3

Complete technical work to obtain a NEPA Class of Action determination from FRA

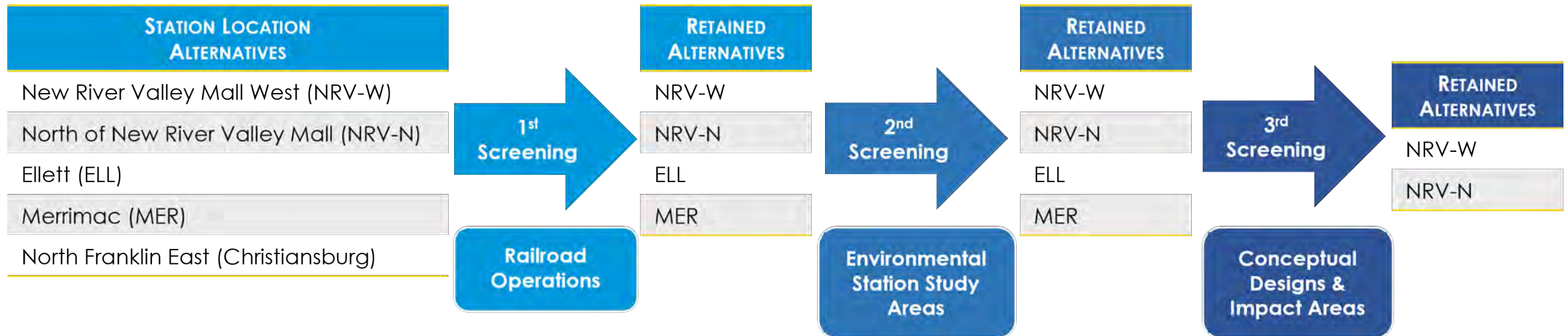
Purpose & Need



Process

Purpose & Need Element	Screening Criterion		
	#1 – Railroad Operations	#2 – Environmental Station Study Areas	#3 – Conceptual Designs & Impact Areas
Provide Transportation Alternatives	Safety Track Geometry	Hazardous Materials Permitting Requirements	Track Alignment Track Grade Constructability Security Hazardous Materials Permitting Requirements
Regional Economic Development		Air Quality Noise & Vibration Prime Farmland Protected Species & Critical Habitat Section 4(f) & 6(f)	Property Acquisition Relocations Air Quality Noise & Vibration Prime Farmland Protected Species & Critical Habitat Section 4(f) & 6(f)
Promote Economic Development		Community Resources Cultural & Historic Resources Water Resources	Topography Utilities Future Expansion Incremental Development Community Resources Cultural & Historic Resources Water Resources
Multimodal Connectivity		Land Use & Zoning	Bicycle Access Pedestrian Access Transit Access Highway Access Land Use & Zoning
Improve Mobility	Operations	Regulatory Agency Involvement	Traffic Impacts Railroad Operations Regulatory Agency Involvement
Meet Regional Ridership Demand		Environmental Justice	Platform Parking Environmental Justice

Matrix Screening



Station Design Assumptions*



Caretaker Station – Paso Robles, CA (with Community Services)

Paso Robles, CA (PRB). Great American Stations. (n.d.). Retrieved January 25, 2022, from <https://www.greatamericanstations.com/stations/paso-robles-ca-prb/>



High-Level Platform – Great American Stations*



High-Level Platform – Springfield, MA
 Difdesign. (2020, January 10). *Springfield union station platform C elevator ready, awaits Amtrak inspection*. EDC. Retrieved January 25, 2022, from <https://www.westernmassedc.com/springfield-union-station-platform-c-elevator-ready-awaits-amtrak-inspection/>

Amtrak Station Design Guidance

Ridership

- 40,000 to 87,000 annual passengers
- 128 to 279 daily passengers

Station

- Type: Amtrak Caretaker
- 20,000 to 100,000 annual passengers
- Size: 3,500 square feet

Proposed Station Design Parameters

Platform (High-Level)

- Length: 1000 feet long
- Width: 15 feet wide
- Height: 4 feet above track

Multi-Modal Station

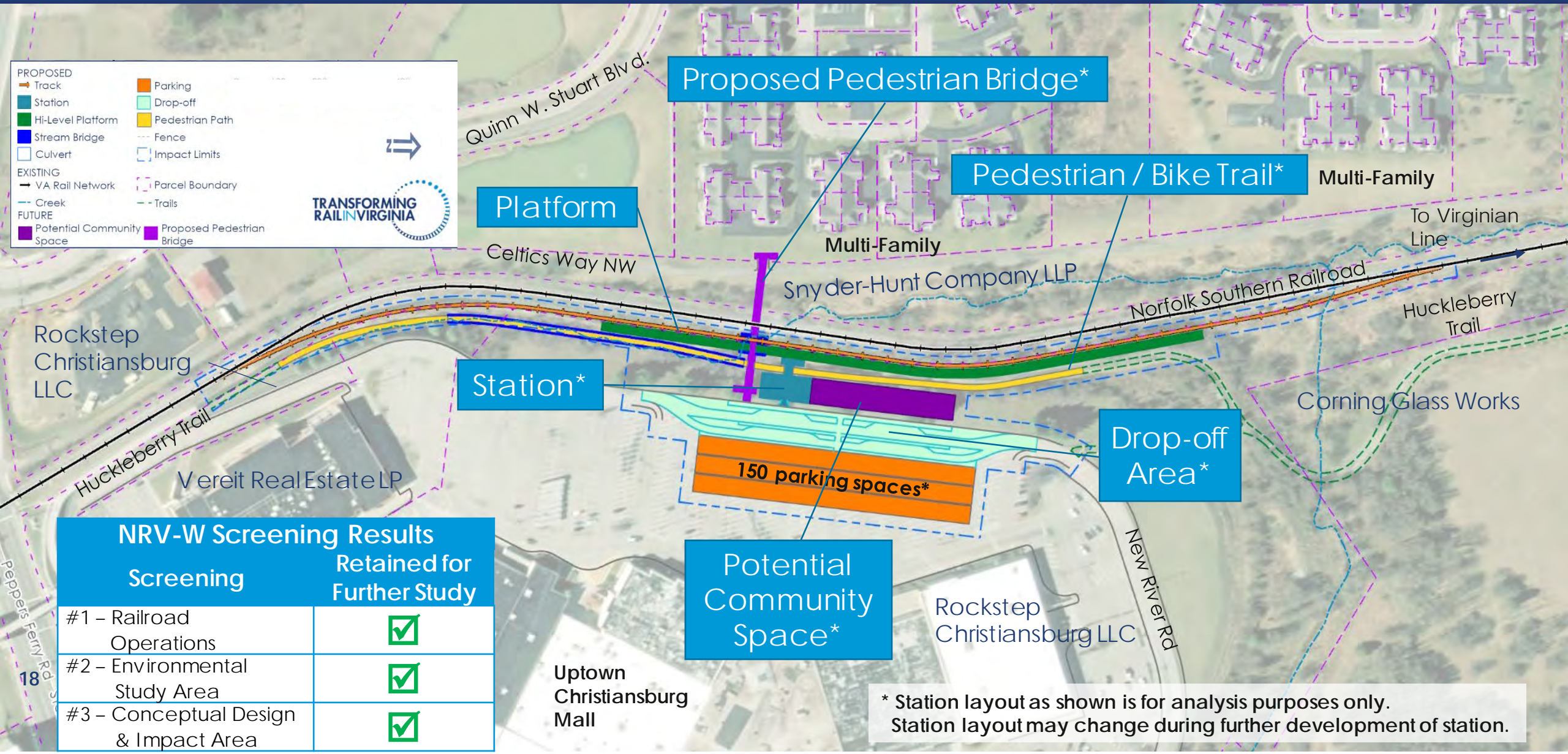
- Transit: Circular route with drop-off
- Vehicle: Parking for 64 to 140 spaces (2 passengers per vehicle)
- Vehicle: Circular route with drop-off
- Bicycle: Trail connection
- Pedestrian: Trails and sidewalks

Future Community Space

- Size: 10,000 square feet

* Station planning guidelines. Great American Stations. (n.d.). Retrieved January 25, 2022, from <https://www.greatamericanstations.com/planning-development/station-planning-guidelines/>

New River Valley Mall - West (NRV-W) Site Proposed Station



PROPOSED

- Track
- Station
- Hi-Level Platform
- Stream Bridge
- Culvert
- Parking
- Drop-off
- Pedestrian Path
- Fence
- Impact Limits

EXISTING

- VA Rail Network
- Creek
- Potential Community Space
- Parcel Boundary
- Trails
- Proposed Pedestrian Bridge

FUTURE

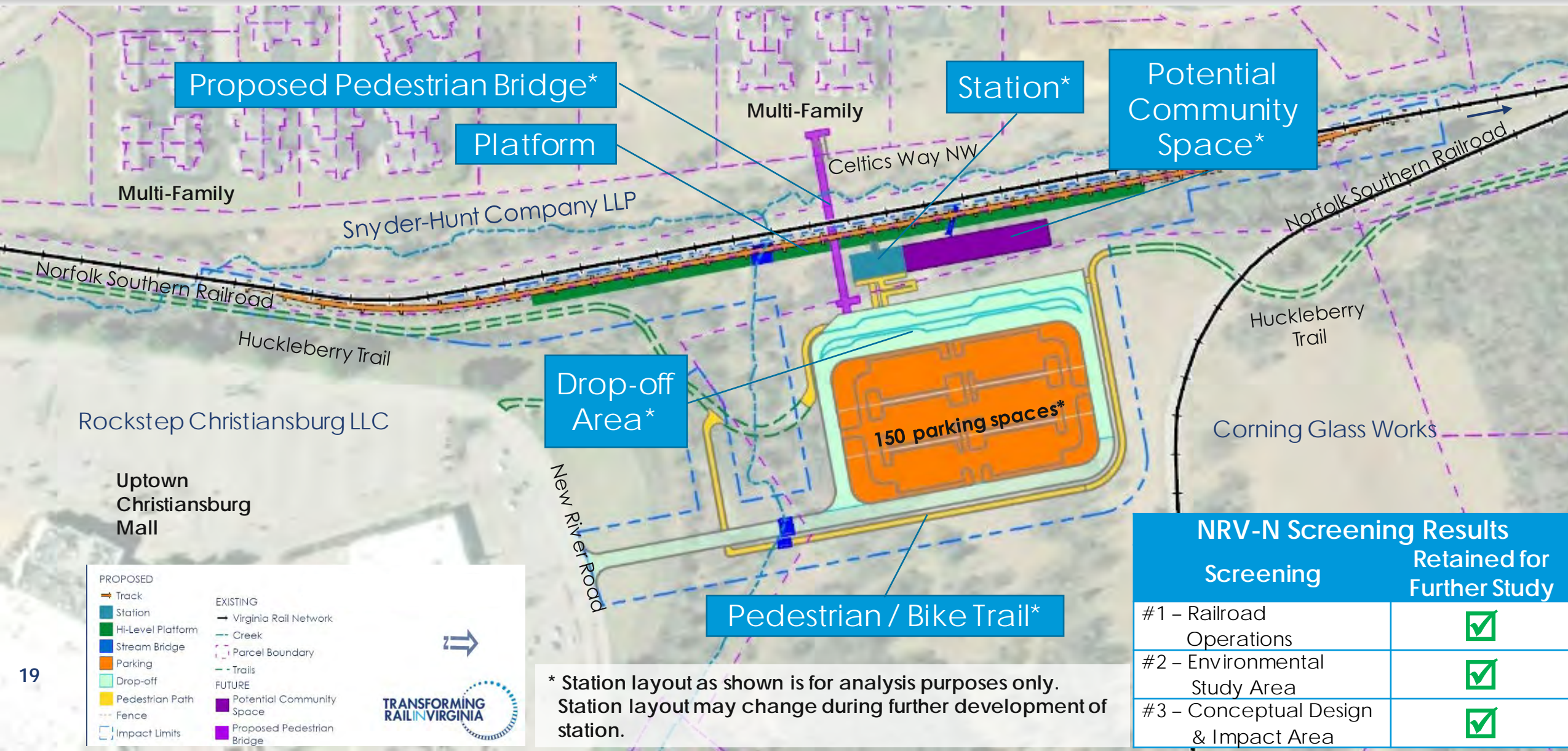
- Potential Community Space

TRANSFORMING RAIL IN VIRGINIA

NRV-W Screening Results	
Screening	Retained for Further Study
#1 - Railroad Operations	✓
#2 - Environmental Study Area	✓
#3 - Conceptual Design & Impact Area	✓

* Station layout as shown is for analysis purposes only. Station layout may change during further development of station.

North of New River Valley Mall (NRV-N) Site Proposed Station



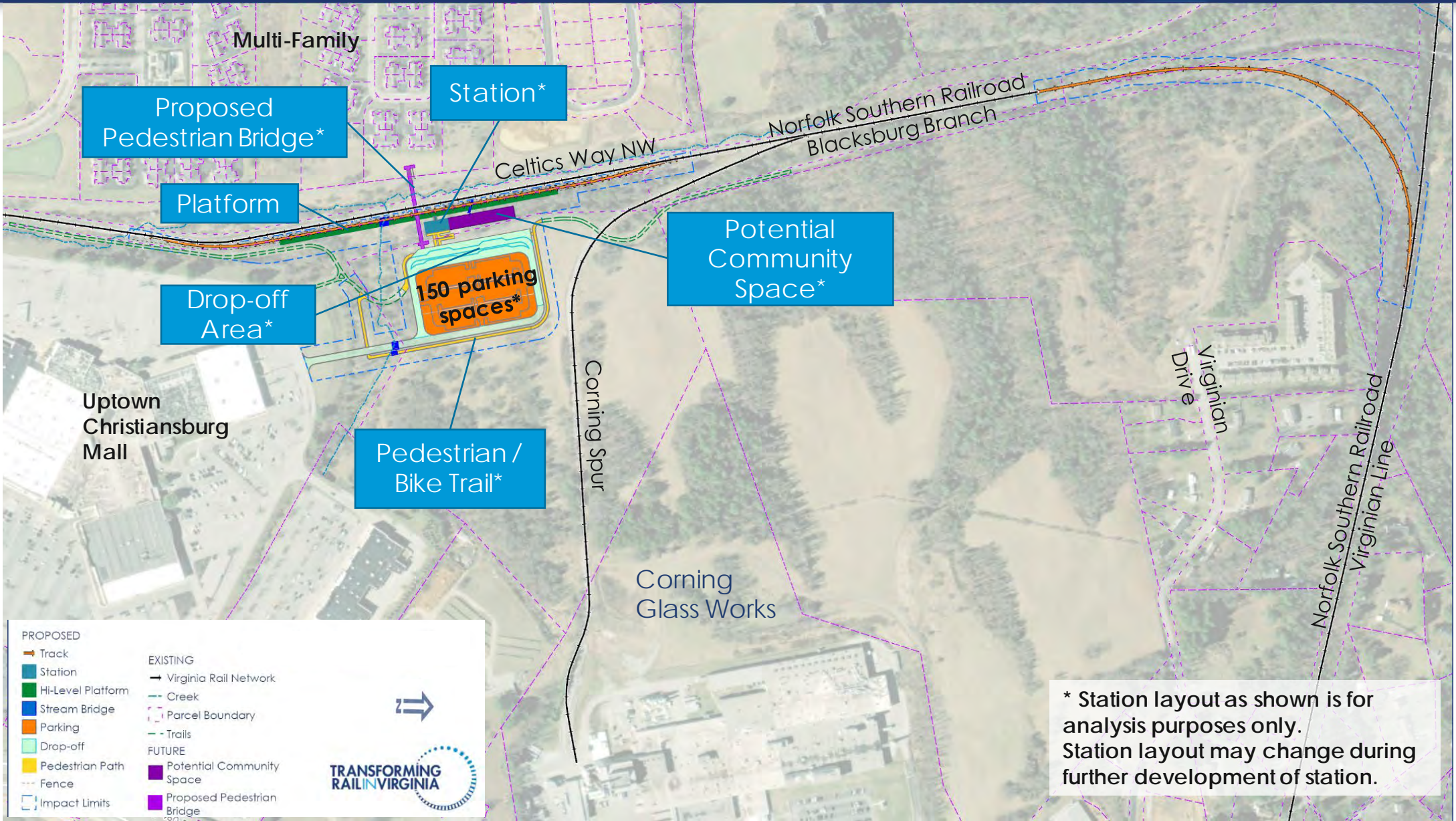
- PROPOSED**
- Track
 - Station
 - Hi-Level Platform
 - Stream Bridge
 - Parking
 - Drop-off
 - Pedestrian Path
 - Fence
 - Impact Limits
- EXISTING**
- Virginia Rail Network
 - Creek
 - Parcel Boundary
 - Trails
- FUTURE**
- Potential Community Space
 - Proposed Pedestrian Bridge



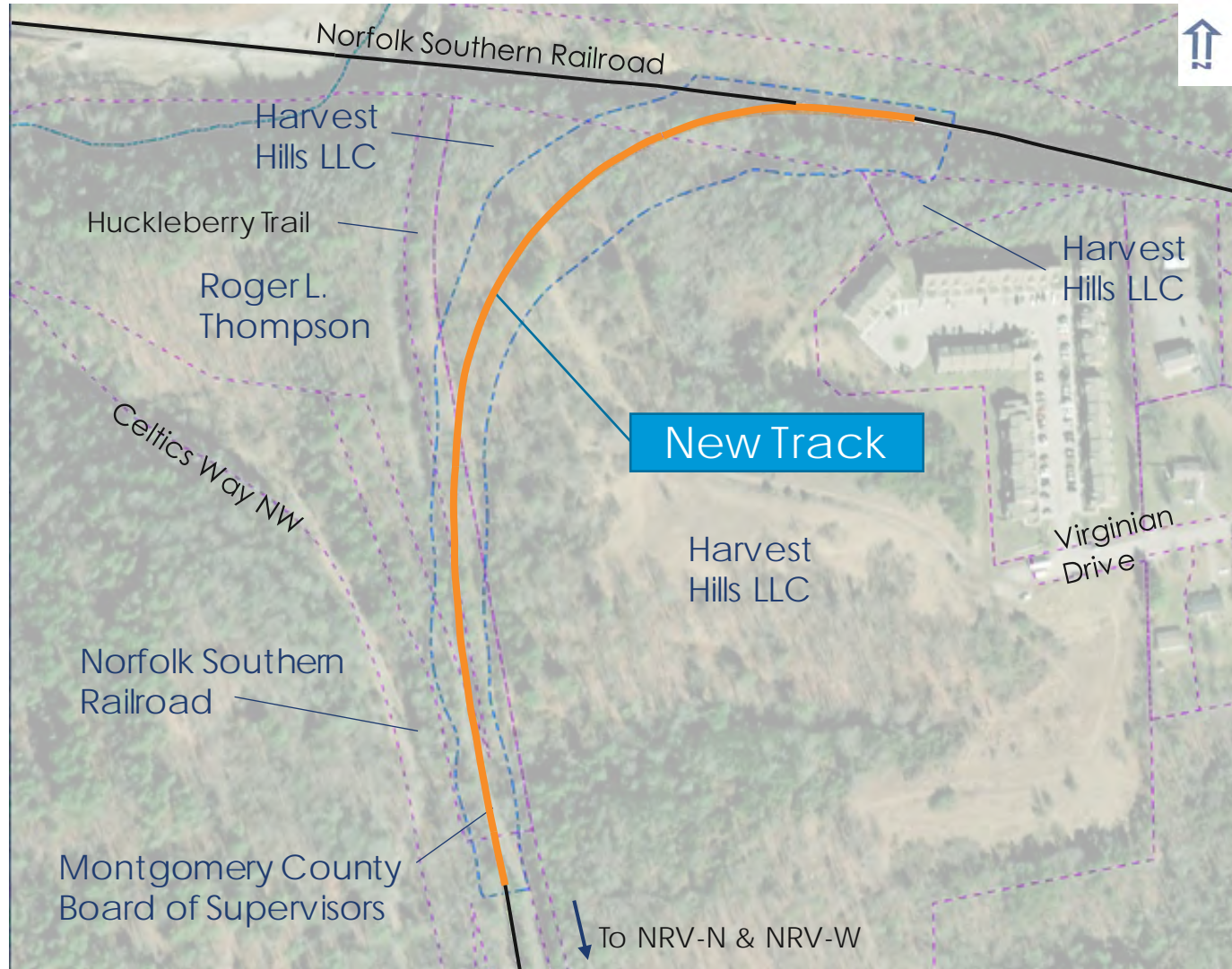
* Station layout as shown is for analysis purposes only. Station layout may change during further development of station.

NRV-N Screening Results	Retained for Further Study
#1 - Railroad Operations	<input checked="" type="checkbox"/>
#2 - Environmental Study Area	<input checked="" type="checkbox"/>
#3 - Conceptual Design & Impact Area	<input checked="" type="checkbox"/>

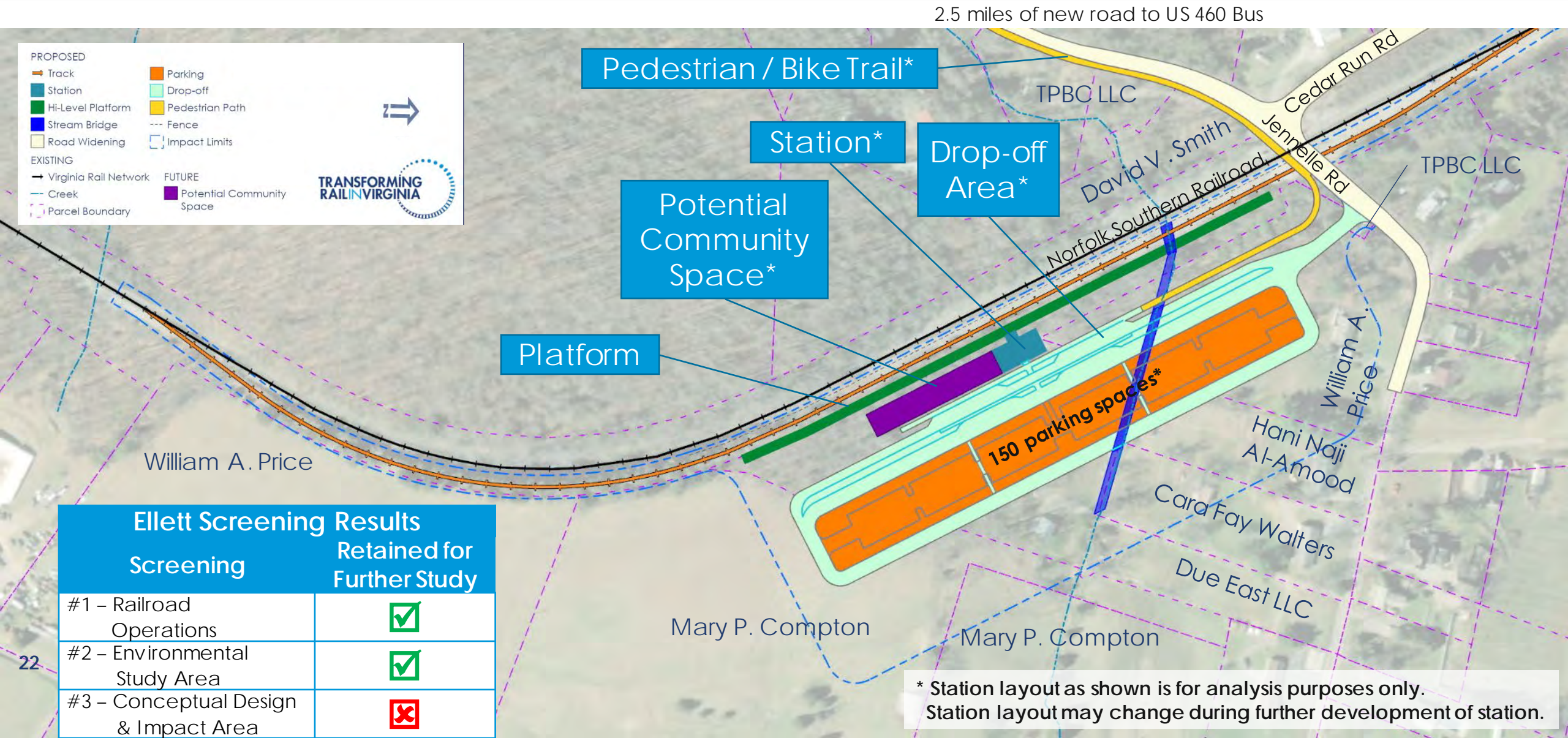
North of New River Valley Mall (NRV-N) Site Proposed Station



NRV-N & NRV-W Sites – Off-site Infrastructure Improvements



Ellett Site – Station Site



PROPOSED

- Track
- Station
- Hi-Level Platform
- Stream Bridge
- Road Widening
- Parking
- Drop-off
- Pedestrian Path
- Fence
- Impact Limits

EXISTING

- Virginia Rail Network
- Creek
- Parcel Boundary

FUTURE

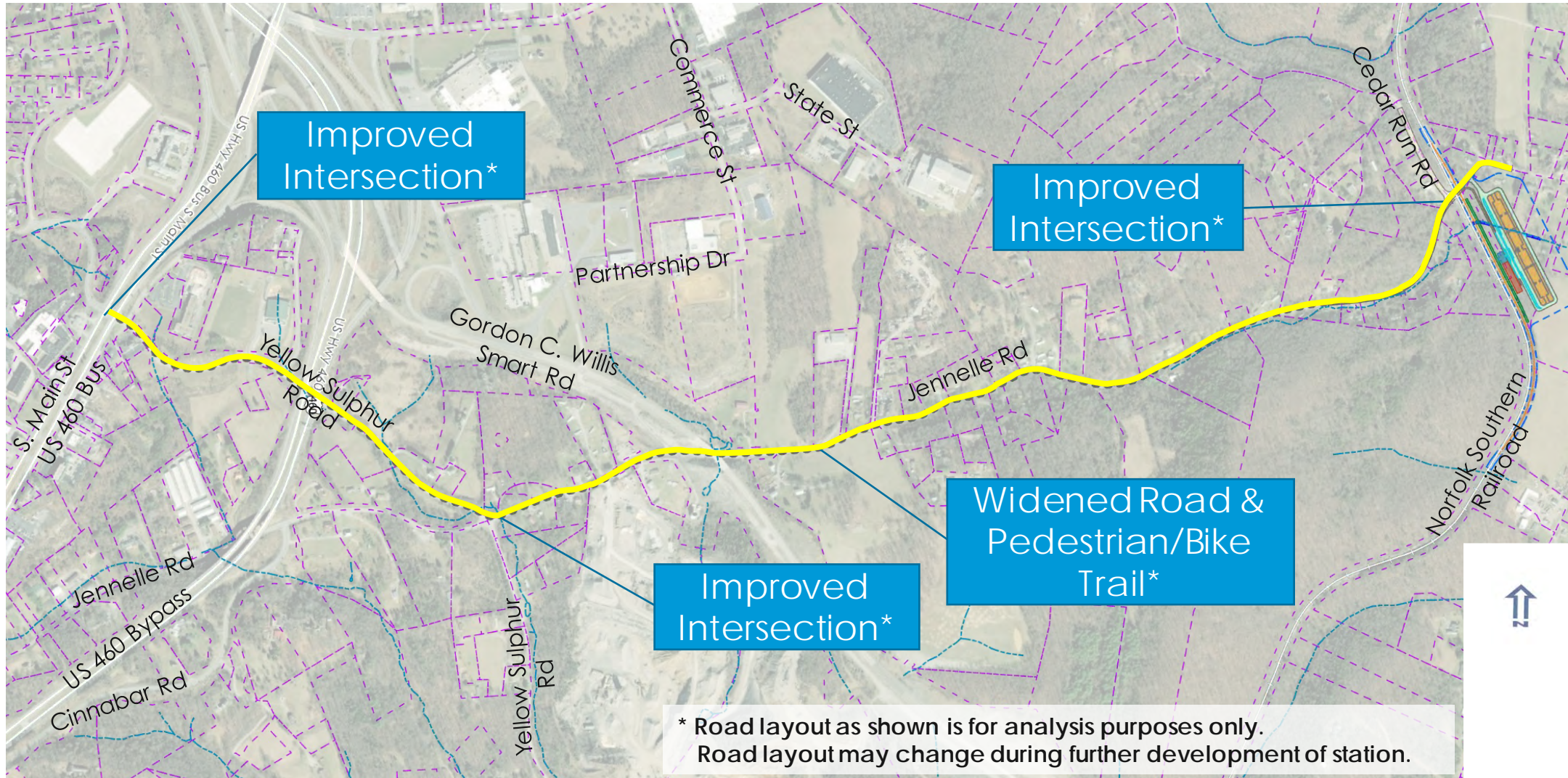
- Potential Community Space

TRANSFORMING RAIL IN VIRGINIA

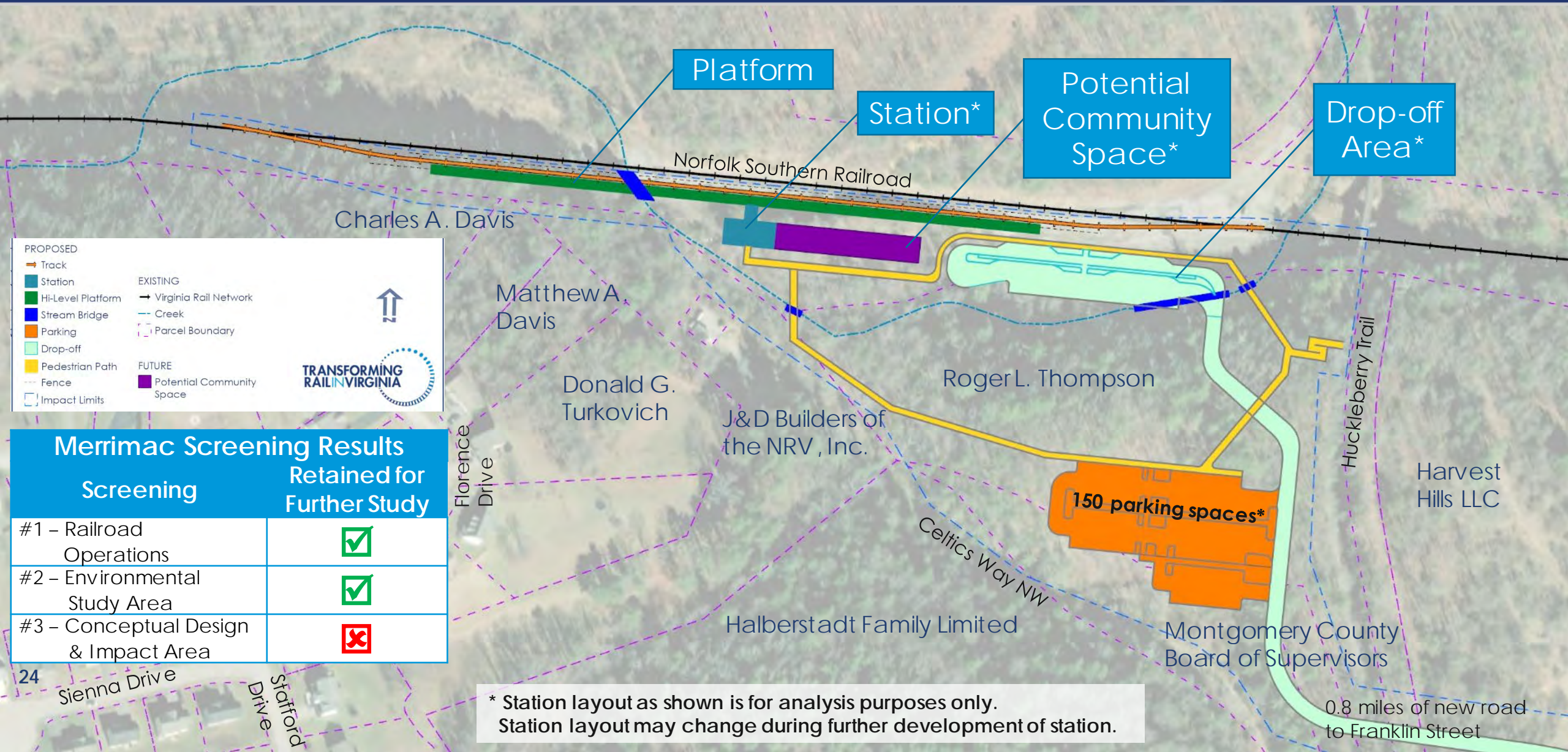
Ellett Screening Results	
Screening	Retained for Further Study
#1 – Railroad Operations	✓
#2 – Environmental Study Area	✓
#3 – Conceptual Design & Impact Area	✗

* Station layout as shown is for analysis purposes only. Station layout may change during further development of station.

Ellett Site – Off-site Infrastructure Improvements



Merrimac Site – Proposed Station



PROPOSED

- Track
- Station
- Hi-Level Platform
- Stream Bridge
- Parking
- Drop-off
- Pedestrian Path
- Fence
- Impact Limits

EXISTING

- Virginia Rail Network
- Creek
- Parcel Boundary

FUTURE

- Potential Community Space

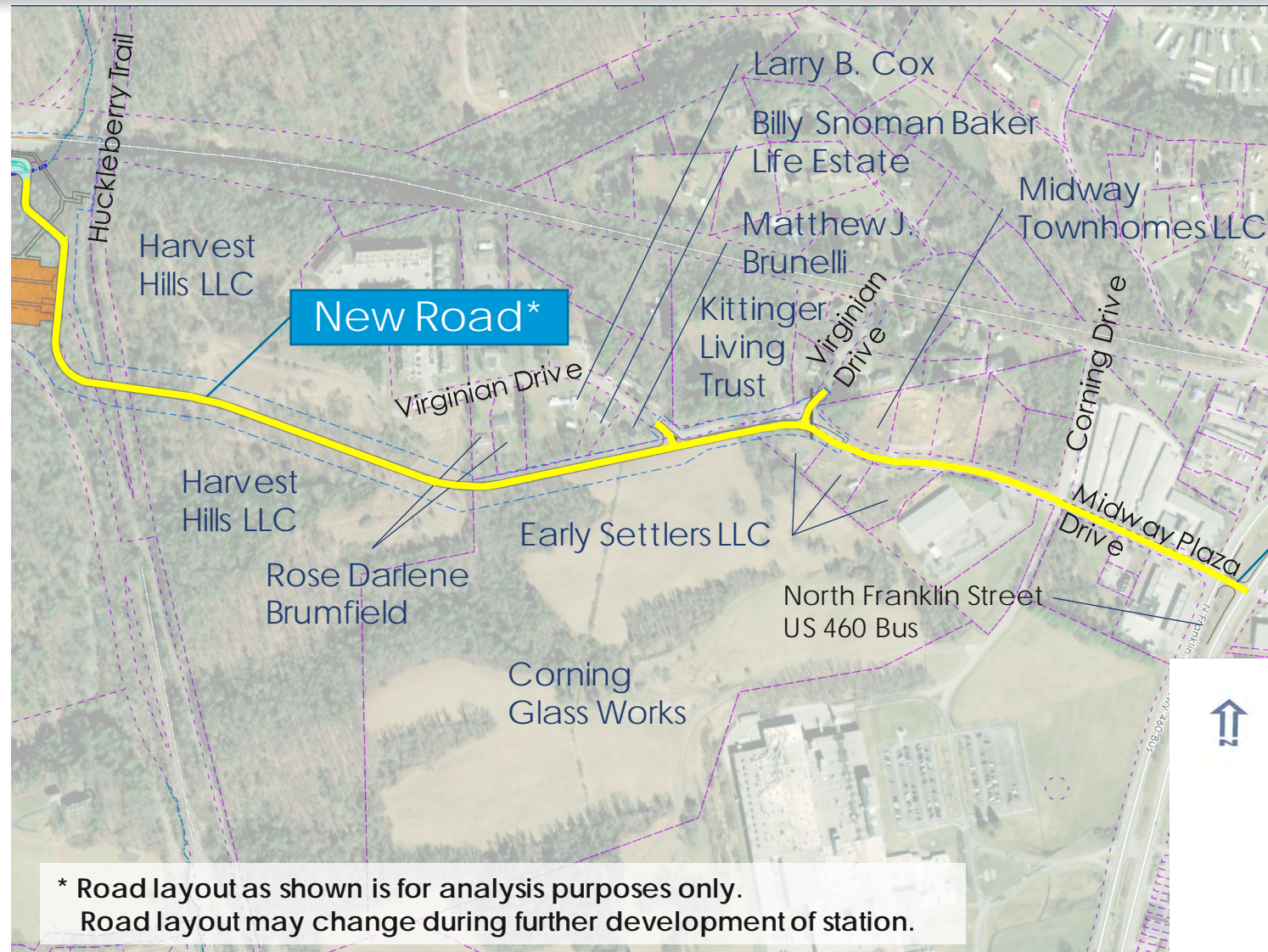
TRANSFORMING RAIL IN VIRGINIA

Screening	Retained for Further Study
#1 – Railroad Operations	✓
#2 – Environmental Study Area	✓
#3 – Conceptual Design & Impact Area	✗

* Station layout as shown is for analysis purposes only. Station layout may change during further development of station.

0.8 miles of new road to Franklin Street

Merrimac Site – Off-site Infrastructure Improvements



* Road layout as shown is for analysis purposes only.
Road layout may change during further development of station.

Capital Cost Estimates

Site Alternative	Station Systems Cost (\$M)	Off-Site Infrastructure Cost (\$M)	Total Capital Cost (\$M)
NRV Mall West Site	\$37.3	\$19.3	\$56.6
NRV Mall North Site	\$33.0	\$19.3	\$52.3
Merrimac Site	\$48.0	\$25.6	\$73.6
Ellett Site	\$77.5	\$97.2	\$174.7

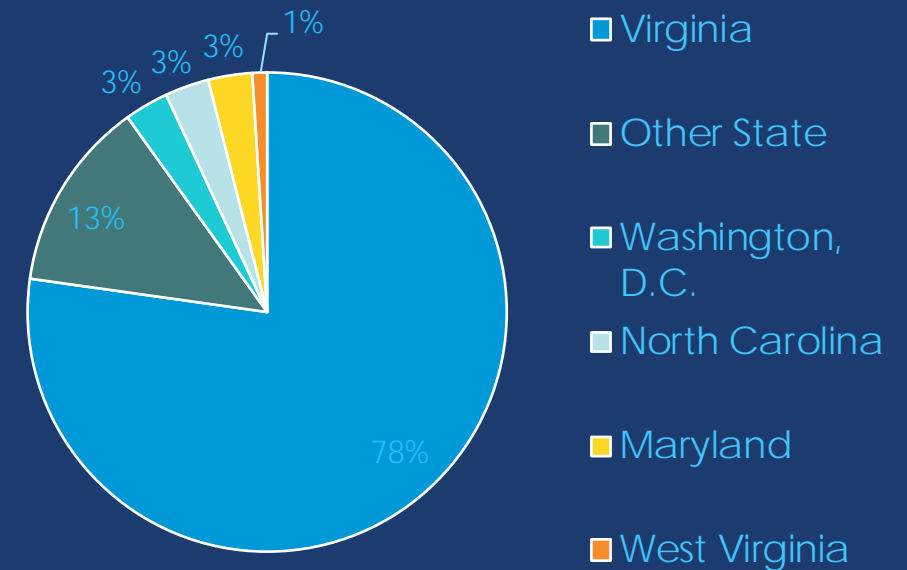
Feasibility Study Community Outreach

- Survey 1: December 22, 2021 – January 31, 2022
- Property Owner Meetings: January-February 2022
- Key Stakeholder Focus Group Meetings: February 2022
- Public Meeting:
February 28, 2022 & March 1, 2022
- Post Public Meeting
 - Survey 2: February 28, 2022 – March 14, 2022
 - Meeting Recording
 - Public Outreach Summary

Survey 1 Participation

- 2,630 survey participants
- Estimated time to complete: 5 minutes

Participant Location by State



Survey 2

- Open from February 28 – March 15, 2022
- Final opportunity to provide feedback on the Feasibility Study
- <https://www.surveymonkey.com/r/NewRiverValleyStationSurvey2>



Scan the QR code with your phone's camera app to be directed to the survey.

Next Steps

- Complete the New River Valley Passenger Rail Feasibility Study
- Survey 2: Available until March 14, 2022
- Complete NEPA Class of Action with the Federal Railroad Administration
- Advance NEPA Study & Begin Concept Design for Station
- Continue to meet with Stakeholders



Q&A

- Please use the chat to ask questions
- Chat will be available until 7:30 PM
- Any questions that are not addressed during the meeting will be collected and addressed as part of the Public Meeting Summary
- The Public Meeting Summary will be available to the public on the project website, <https://transformingrailva.com/projects/new-river-valley-station/> by March 24, 2022