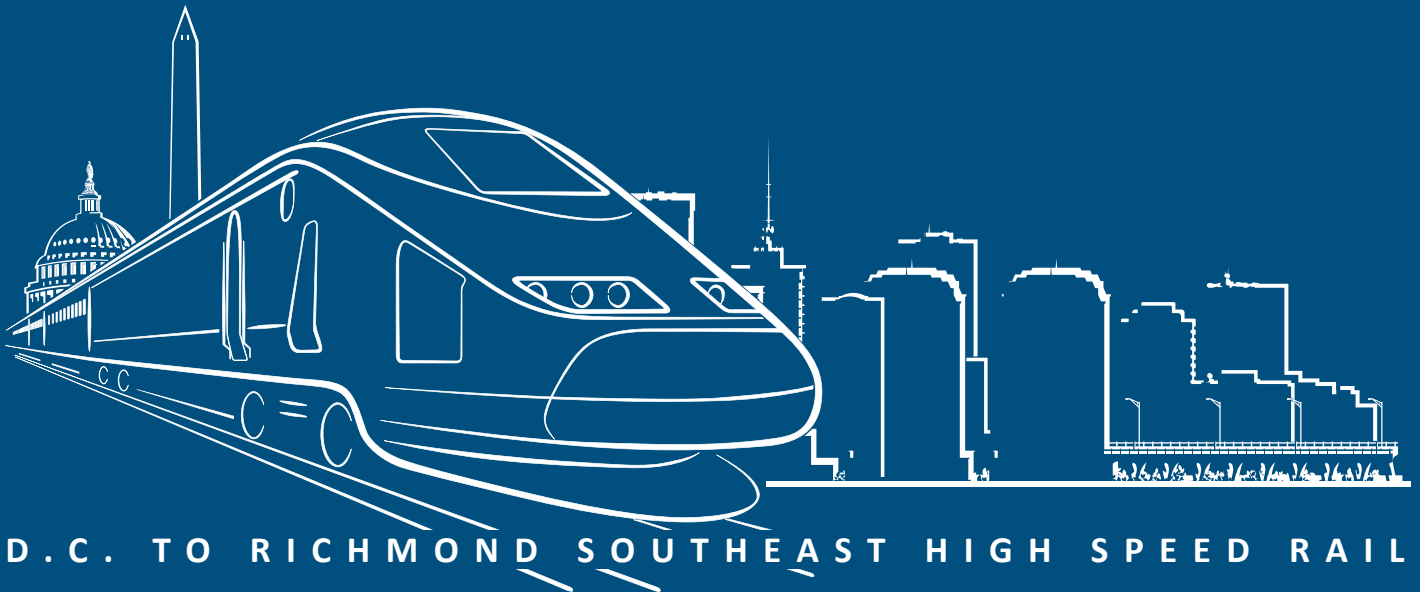




C BUILD ALTERNATIVES AREA 1-ARLINGTON

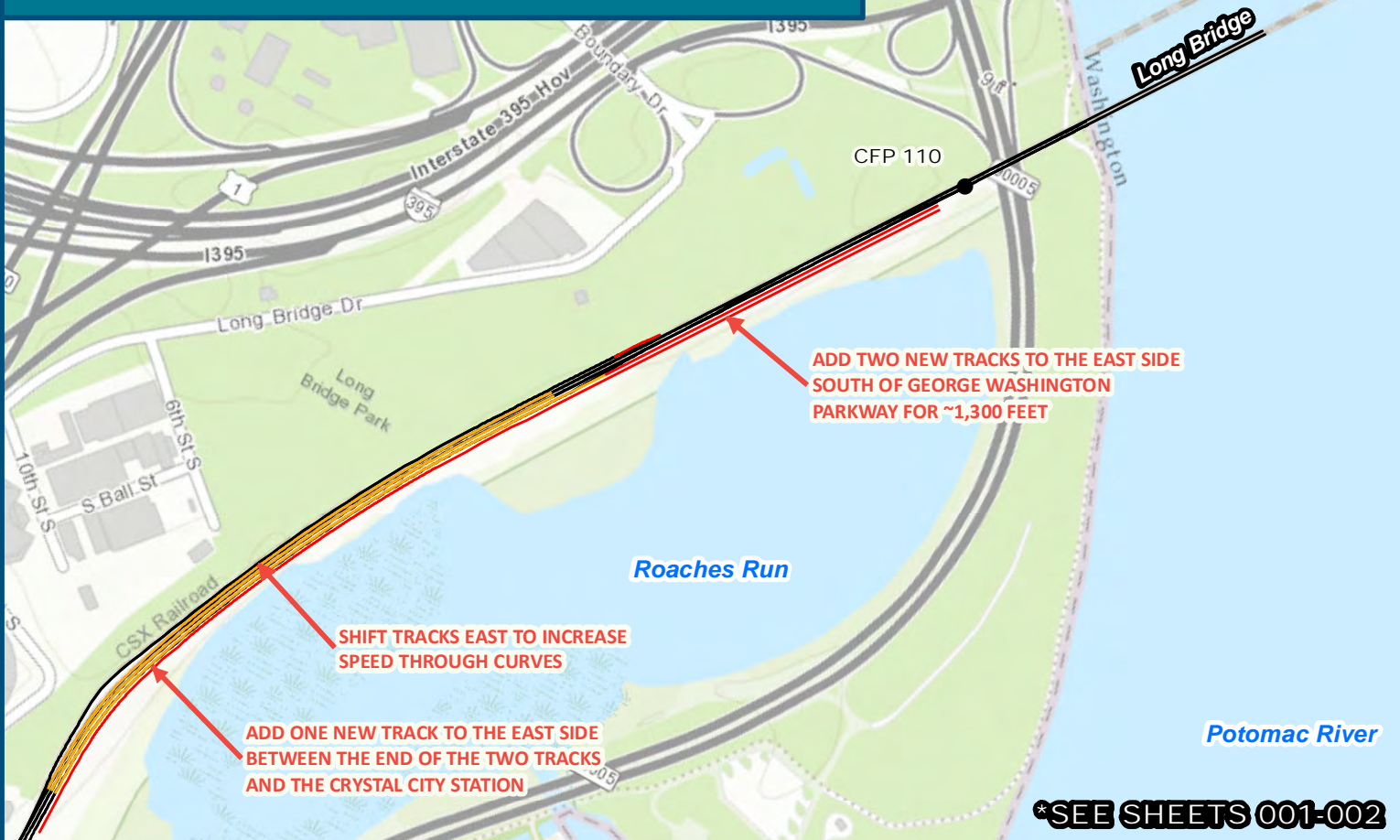


D.C. TO RICHMOND SOUTHEAST HIGH SPEED RAIL

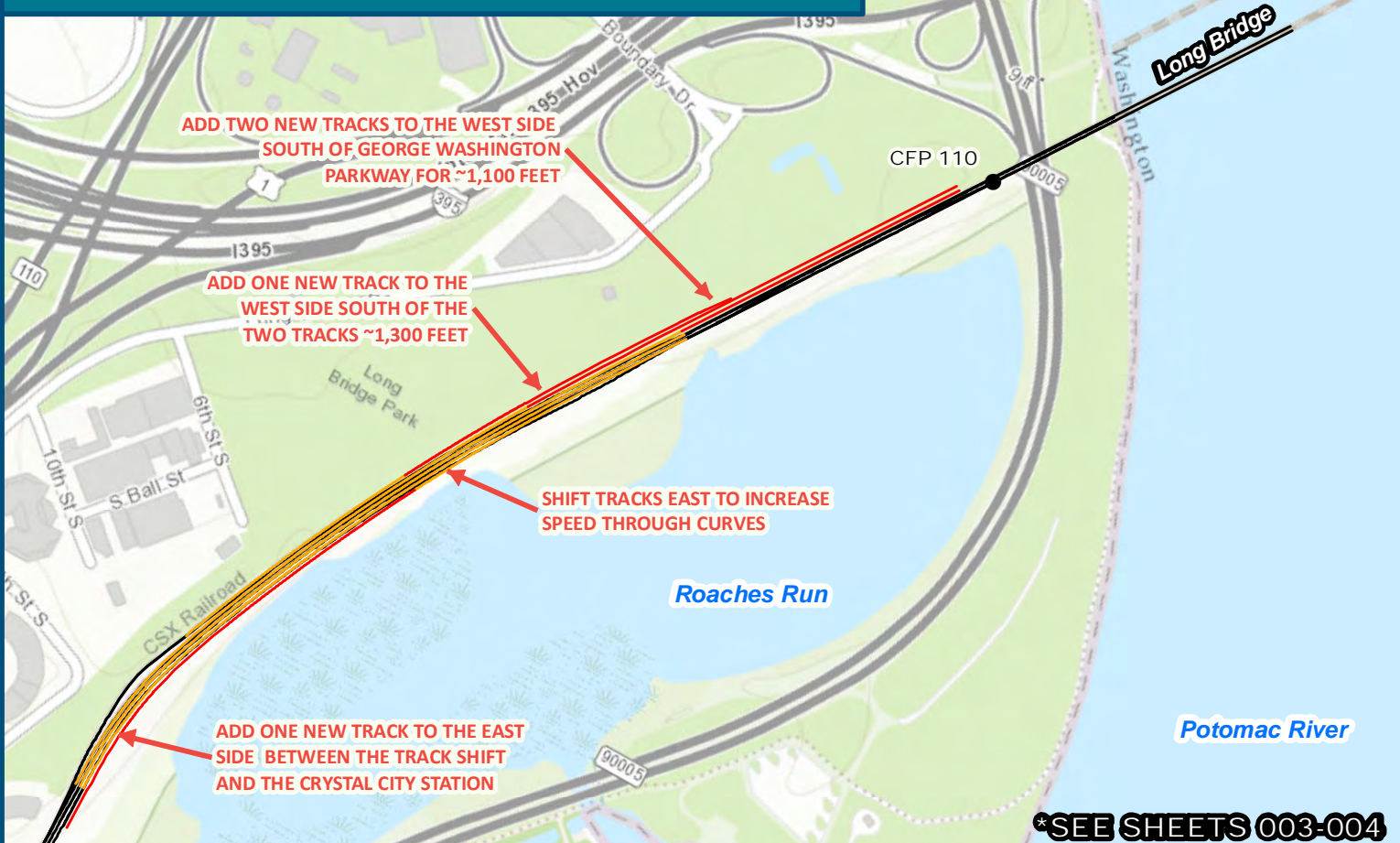
C BUILD ALTERNATIVES: AREA 1—ARLINGTON

FIGURE C-1: BUILD ALTERNATIVES 1A, 1B, AND 1C.....	C-2
MAPBOOK C-1: BUILD ALTERNATIVES 1A, 1B, 1C—INDEX SHEET	C-3
MAPBOOK C-1: BUILD ALTERNATIVE 1A	C-4
MAPBOOK C-1: BUILD ALTERNATIVE 1B.....	C-6
MAPBOOK C-1: BUILD ALTERNATIVE 1C.....	C-8

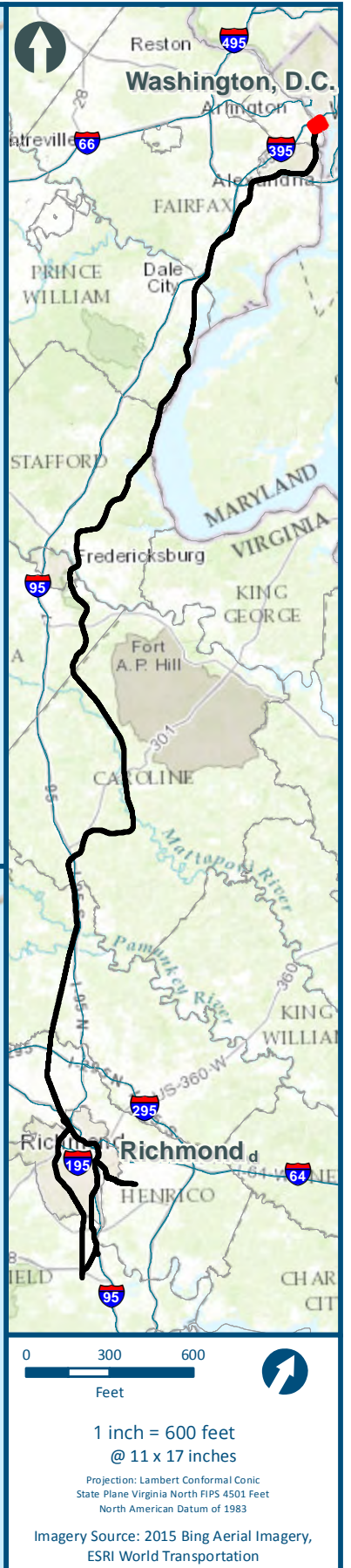
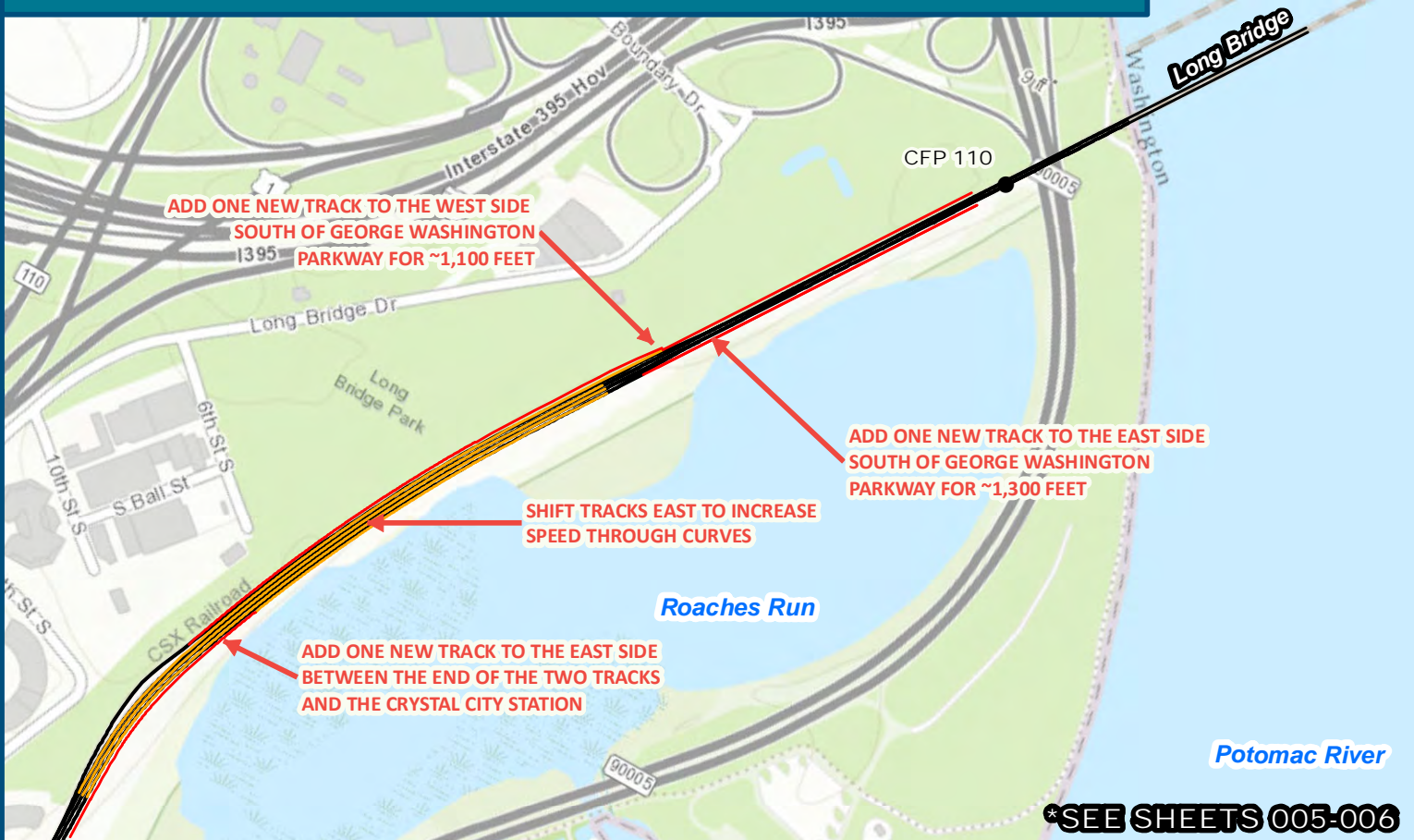
1A: ADD TWO TRACKS ON THE EAST



1B: ADD TWO TRACKS ON THE WEST



1C: ADD ONE TRACK EAST AND ONE TRACK WEST



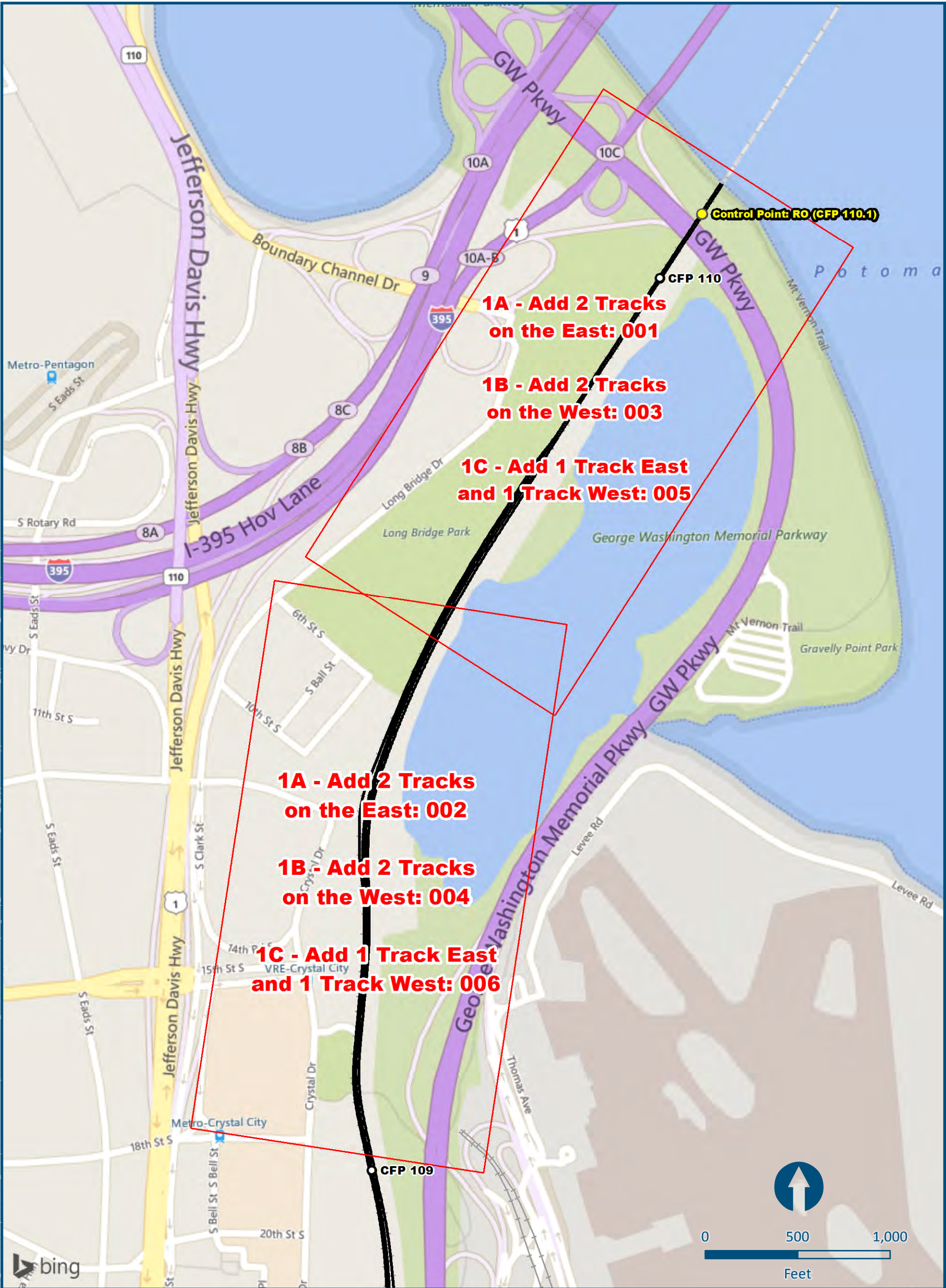
Legend

- CSXT Mileposts
- ← Track Improvements
- Track - Existing
- Track - Shift
- Track - Proposed

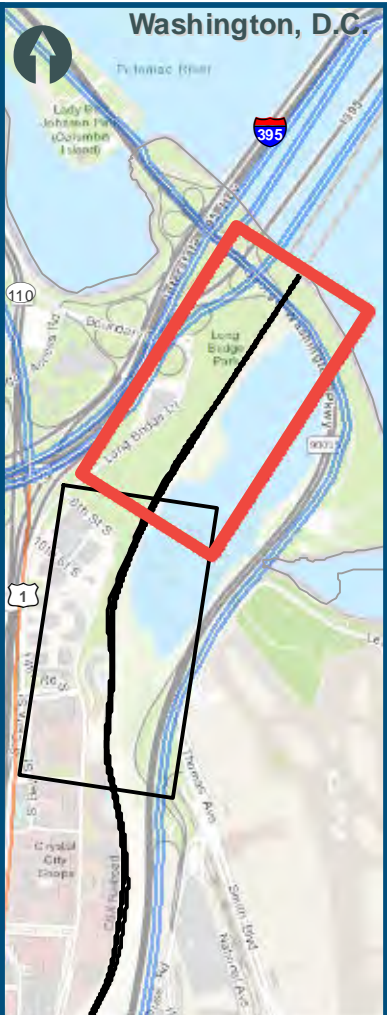
Figure C-1

Build Alternatives
1A, 1B, 1C

Mapbook C-1 Build Alternatives 1A, 1B, 1C
Index Sheet 1 of 1



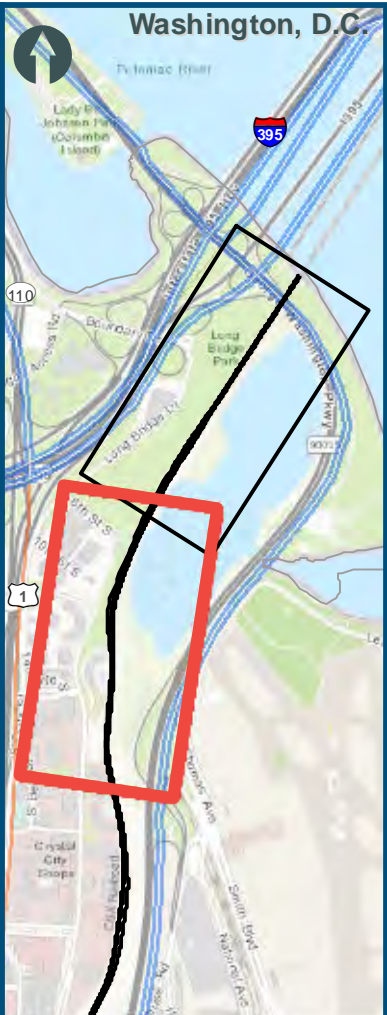
\\delmain\GIS_DATA\GIS\Projects\011645_VADepotRailPublicTransportation\0230056_RAPS-4\MapDev-Concept\Eng\map_docs\mxd\DE\Index_11x17.mxd | Last Updated: 05-31-2017



0 100 200
Feet
1 inch = 200 feet
@ 11 x 17 inches
Projection: Lambert Conformal Conic
State: Plane Virginia North FIPS 4501 Feet
North American Datum of 1983
Imagery/Basemap Source: 2013-2015 VGIN
Aerial Imagery; ESRI World Transportation

- Legend**
- Permanent Limits of Disturbance
 - Temporary Limits of Disturbance
 - ROW - Proposed
 - ROW - Proposed by others
 - CSXT Mileposts
 - Track - Existing
 - Track - Shift
 - Track - Proposed
 - Track - Proposed by others
 - Track - Remove
 - Temporary Track (Shoo-Fly)
 - Crossover/Turnout - Proposed
 - Crossover/Turnout - Proposed by others
 - Crossover/Turnout - Remove
 - Walls
 - Walls - Proposed by others
 - Fence
 - Bridge
 - Bridge - Proposed by others
 - Roadway
 - Roadway - Proposed by others
 - Edge of Pavement
 - Roadway Centerline
 - Median Separators
 - Detour
 - Quad Gate
 - Locking Gate
 - SWM Facilities
 - Drainage Culvert Crossings
 - Drainage Directional Arrows
 - Stations
 - Proposed Stations
 - Station Platform - Existing
 - Station Platform - Proposed
 - Station Platform - Proposed by others
 - Station Platform - Remove
 - Building/Structure
 - CSXT ROW (County Parcel Data)
 - City/County Parcels
 - City/County Boundary

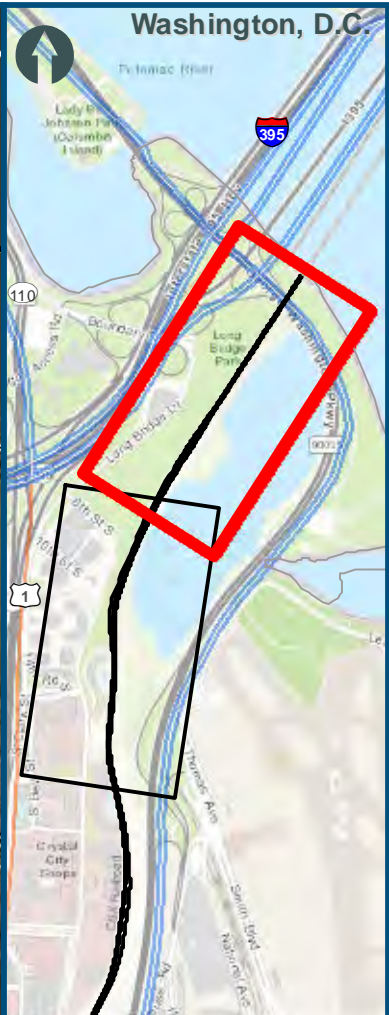
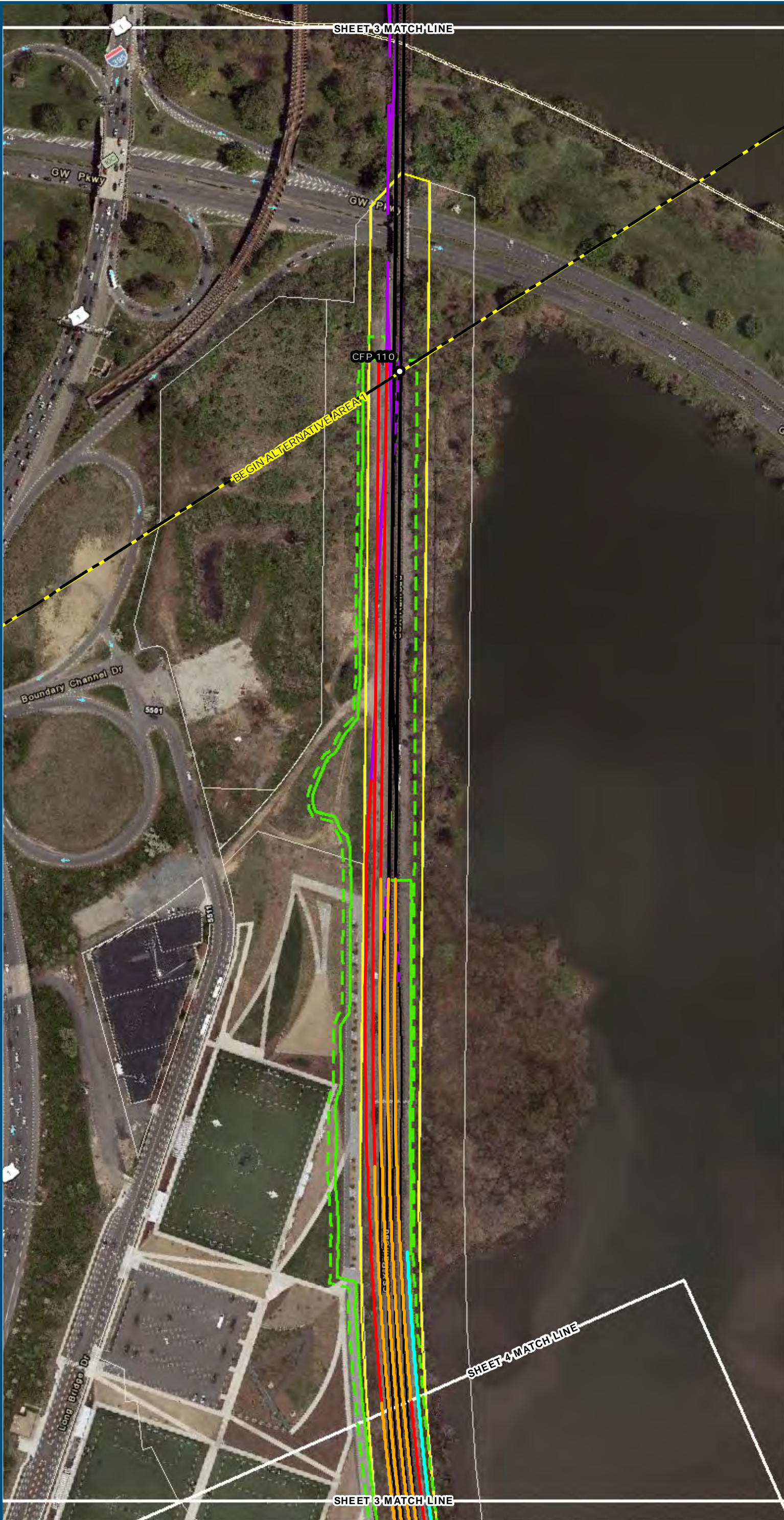
Mapbook C-1
Build Alternative 1A
Add Two Tracks
on the East



0 100 200
Feet
1 inch = 200 feet
@ 11 x 17 inches
Projection: Lambert Conformal Conic
State Plane Virginia North FIPS 4501 Feet
North American Datum of 1983
Imagery/Basemap Source: 2013-2015 VGIN
Aerial Imagery; ESRI World Transportation

- Legend**
- Permanent Limits of Disturbance
 - Temporary Limits of Disturbance
 - ROW - Proposed
 - ROW - Proposed by others
 - CSXT Mileposts
 - Track - Existing
 - Track - Shift
 - Track - Proposed
 - Track - Proposed by others
 - Track - Remove
 - Temporary Track (Shoo-Fly)
 - Crossover/Turnout - Proposed
 - Crossover/Turnout - Proposed by others
 - Crossover/Turnout - Remove
 - Walls
 - Walls - Proposed by others
 - Fence
 - Bridge
 - Bridge - Proposed by others
 - Roadway
 - Roadway - Proposed by others
 - Edge of Pavement
 - Roadway Centerline
 - Median Separators
 - Detour
 - Quad Gate
 - Locking Gate
 - SWM Facilities
 - Drainage Culvert Crossings
 - Drainage Directional Arrows
 - Stations
 - Proposed Stations
 - Station Platform - Existing
 - Station Platform - Proposed
 - Station Platform - Proposed by others
 - Station Platform - Remove
 - Building/Structure
 - CSXT ROW (County Parcel Data)
 - City/County Parcels
 - City/County Boundary

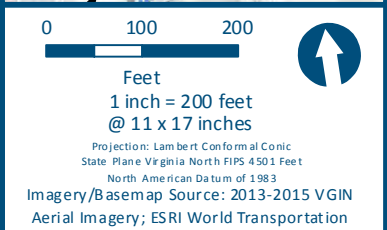
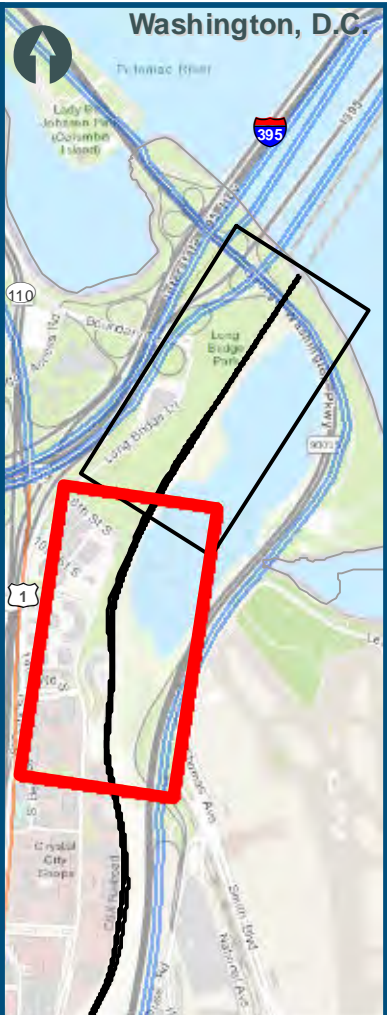
Mapbook C-1
Build Alternative 1A
Add Two Tracks
on the East



0 100 200
Feet
1 inch = 200 feet
@ 11 x 17 inches
Projection: Lambert Conformal Conic
State: Plane Virginia North FIPS 4501 Feet
North American Datum of 1983
Imagery/Basemap Source: 2013-2015 VGIN
Aerial Imagery; ESRI World Transportation

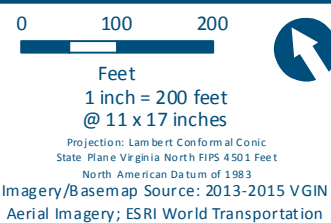
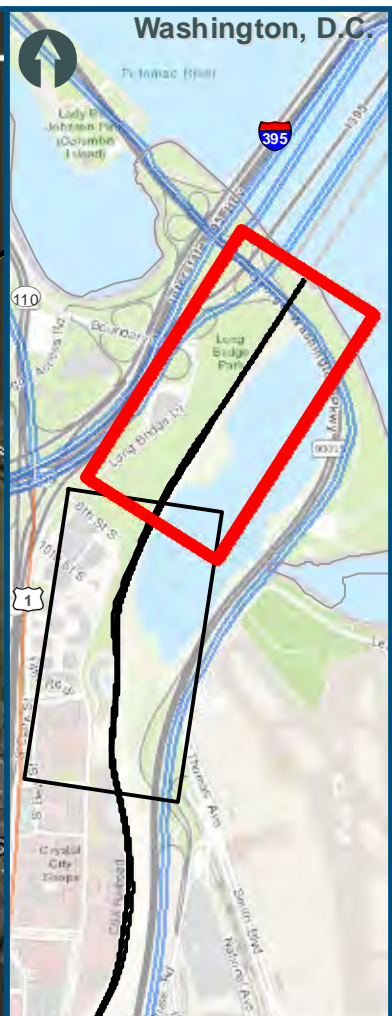
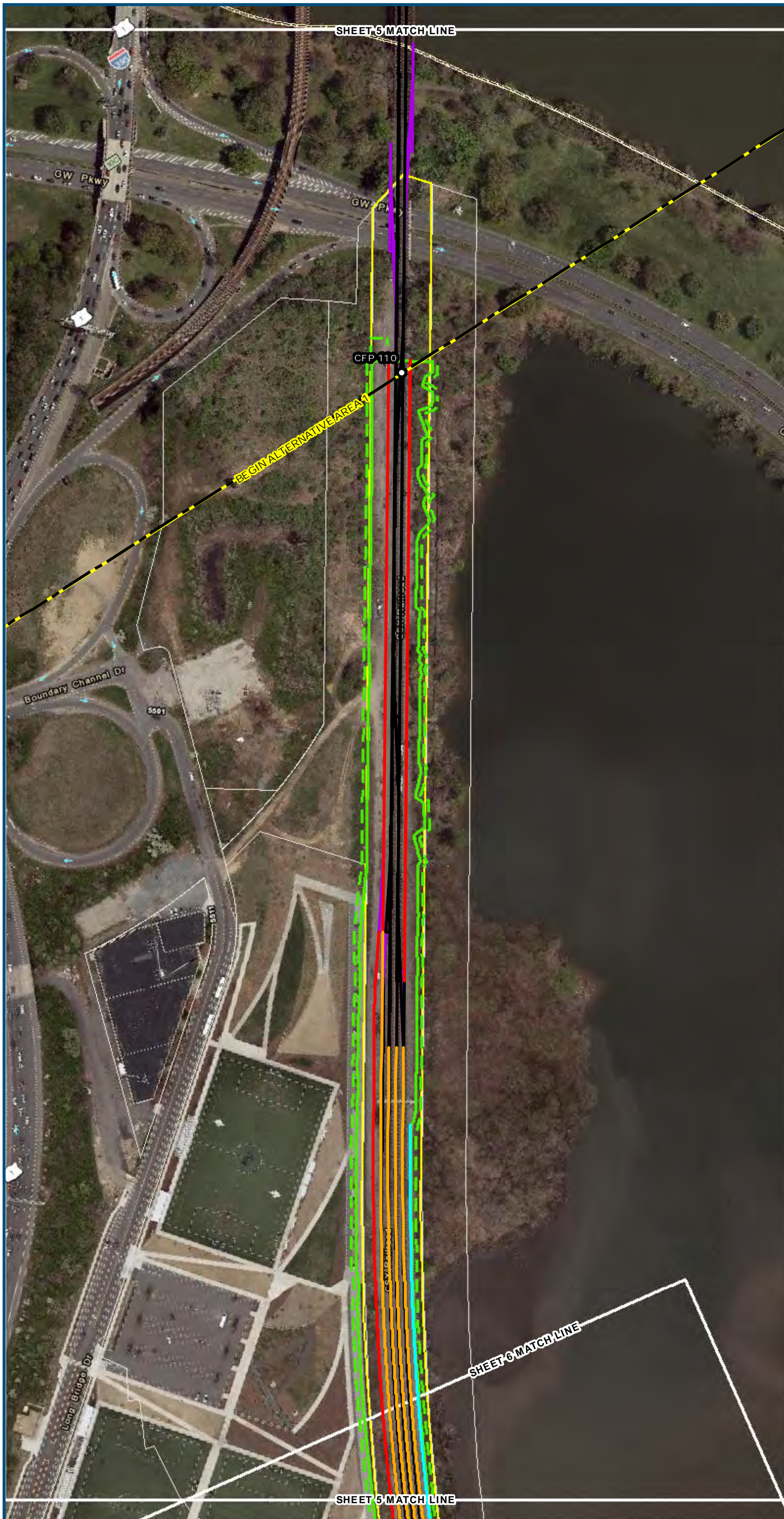
- Legend**
- Permanent Limits of Disturbance
 - Temporary Limits of Disturbance
 - ROW - Proposed
 - ROW - Proposed by others
 - CSXT Mileposts
 - Track - Existing
 - Track - Shift
 - Track - Proposed
 - Track - Proposed by others
 - Track - Remove
 - Temporary Track (Shoo-Fly)
 - Crossover/Turnout - Proposed
 - Crossover/Turnout - Proposed by others
 - Crossover/Turnout - Remove
 - Walls
 - Walls - Proposed by others
 - Fence
 - Bridge
 - Bridge - Proposed by others
 - Roadway
 - Roadway - Proposed by others
 - Edge of Pavement
 - Roadway Centerline
 - Median Separators
 - Detour
 - Quad Gate
 - Locking Gate
 - SWM Facilities
 - Drainage Culvert Crossings
 - Drainage Directional Arrows
 - Stations
 - Proposed Stations
 - Station Platform - Existing
 - Station Platform - Proposed
 - Station Platform - Proposed by others
 - Station Platform - Remove
 - Building/Structure
 - CSXT ROW (County Parcel Data)
 - City/County Parcels
 - City/County Boundary

Mapbook C-1
Build Alternative 1B
Add Two Tracks
on the West



- Legend**
- Permanent Limits of Disturbance
 - Temporary Limits of Disturbance
 - ROW - Proposed
 - ROW - Proposed by others
 - CSXT Mileposts
 - Track - Existing
 - Track - Shift
 - Track - Proposed
 - Track - Proposed by others
 - Track - Remove
 - Temporary Track (Shoo-Fly)
 - Crossover/Turnout - Proposed
 - Crossover/Turnout - Proposed by others
 - Crossover/Turnout - Remove
 - Walls
 - Walls - Proposed by others
 - Fence
 - Bridge
 - Bridge - Proposed by others
 - Roadway
 - Roadway - Proposed by others
 - Edge of Pavement
 - Roadway Centerline
 - Median Separators
 - Detour
 - Quad Gate
 - Locking Gate
 - SWM Facilities
 - Drainage Culvert Crossings
 - Drainage Directional Arrows
 - Stations
 - Proposed Stations
 - Station Platform - Existing
 - Station Platform - Proposed
 - Station Platform - Proposed by others
 - Station Platform - Remove
 - Building/Structure
 - CSXT ROW (County Parcel Data)
 - City/County Parcels
 - City/County Boundary

**Mapbook C-1
Build Alternative 1B
Add Two Tracks
on the West**

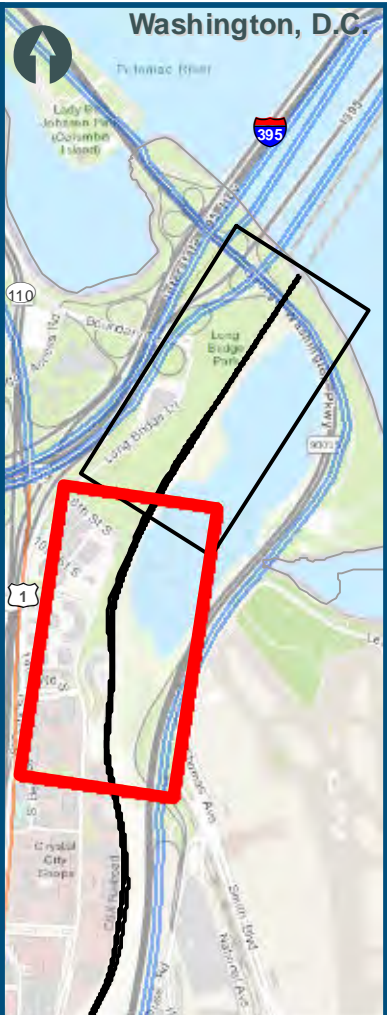


Legend

- Permanent Limits of Disturbance
- Temporary Limits of Disturbance
- ROW - Proposed
- ROW - Proposed by others
- CSXT Mileposts
- Track - Existing
- Track - Shift
- Track - Proposed
- Track - Proposed by others
- Track - Remove
- Temporary Track (Shoo-Fly)
- Crossover/Turnout - Proposed
- Crossover/Turnout - Proposed by others
- Crossover/Turnout - Remove
- Walls
- Walls - Proposed by others
- Fence
- Bridge
- Bridge - Proposed by others
- Roadway
- Roadway - Proposed by others
- Edge of Pavement
- Roadway Centerline
- Median Separators
- Detour
- Quad Gate
- Locking Gate
- SWM Facilities
- Drainage Culvert Crossings
- Drainage Directional Arrows
- Stations
- Proposed Stations
- Station Platform - Existing
- Station Platform - Proposed
- Station Platform - Proposed by others
- Station Platform - Remove
- Building/Structure
- CSXT ROW (County Parcel Data)
- City/County Parcels
- City/County Boundary

Mapbook C-1
Build Alternative 1C
Add One Track East
and One Track West

Sheet 5 of 6



0 100 200
Feet
1 inch = 200 feet
@ 11 x 17 inches
Projection: Lambert Conformal Conic
State Plane Virginia North FIPS 4501 Feet
North American Datum of 1983
Imagery/Basemap Source: 2013-2015 VGIN
Aerial Imagery; ESRI World Transportation

- Legend**
- Permanent Limits of Disturbance
 - Temporary Limits of Disturbance
 - ROW - Proposed
 - ROW - Proposed by others
 - CSXT Mileposts
 - Track - Existing
 - Track - Shift
 - Track - Proposed
 - Track - Proposed by others
 - Track - Remove
 - Temporary Track (Shoo-Fly)
 - Crossover/Turnout - Proposed
 - Crossover/Turnout - Proposed by others
 - Crossover/Turnout - Remove
 - Walls
 - Walls - Proposed by others
 - Fence
 - Bridge
 - Bridge - Proposed by others
 - Roadway
 - Roadway - Proposed by others
 - Edge of Pavement
 - Roadway Centerline
 - Median Separators
 - Detour
 - Quad Gate
 - Locking Gate
 - SWM Facilities
 - Drainage Culvert Crossings
 - Drainage Directional Arrows
 - Stations
 - Proposed Stations
 - Station Platform - Existing
 - Station Platform - Proposed
 - Station Platform - Proposed by others
 - Station Platform - Remove
 - Building/Structure
 - CSXT ROW (County Parcel Data)
 - City/County Parcels
 - City/County Boundary

Mapbook C-1
Build Alternative 1C
Add One Track East
and One Track West