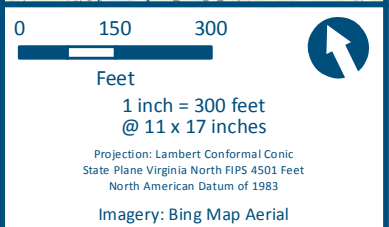
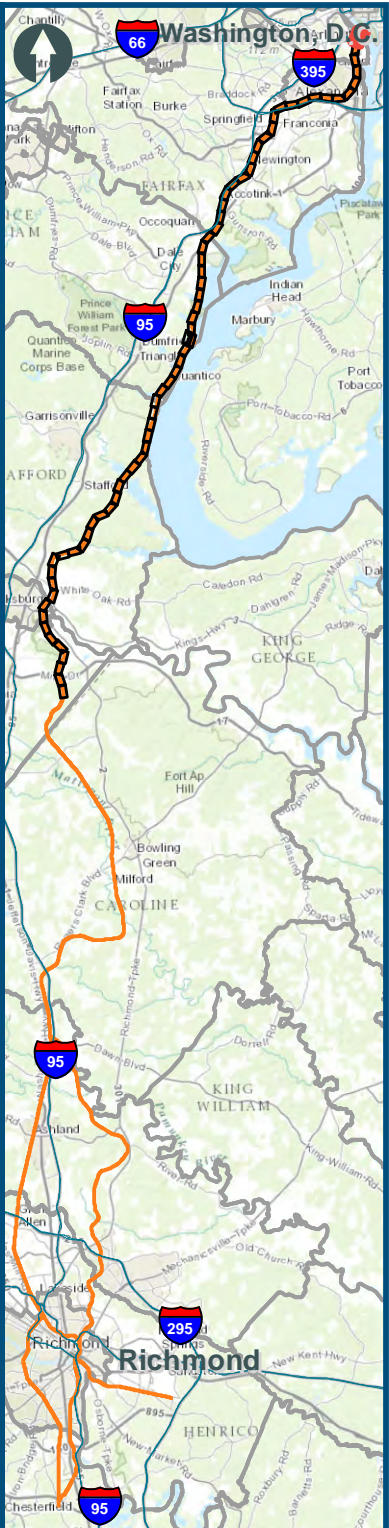


Northern Virginia (NOV) Project Section Hold Bridges Alignment Option Index Map

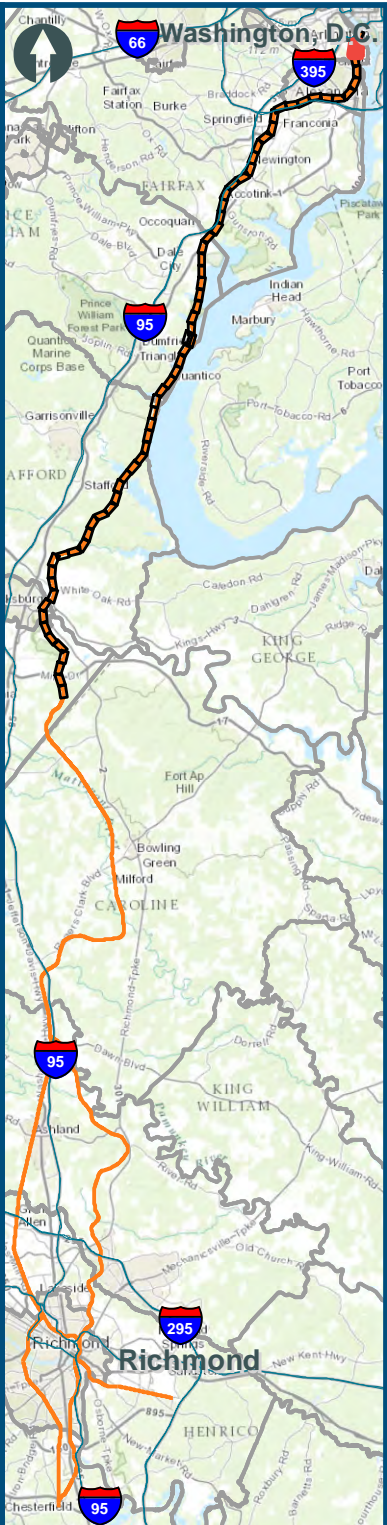




- Legend**
- CSXT Mileposts
 - Existing Track
 - New Track
 - Shifted Track
 - CSXT Right-of-Way
 - Streams

Figure H-1
Northern Virginia
Hold Bridges
Alignment Option

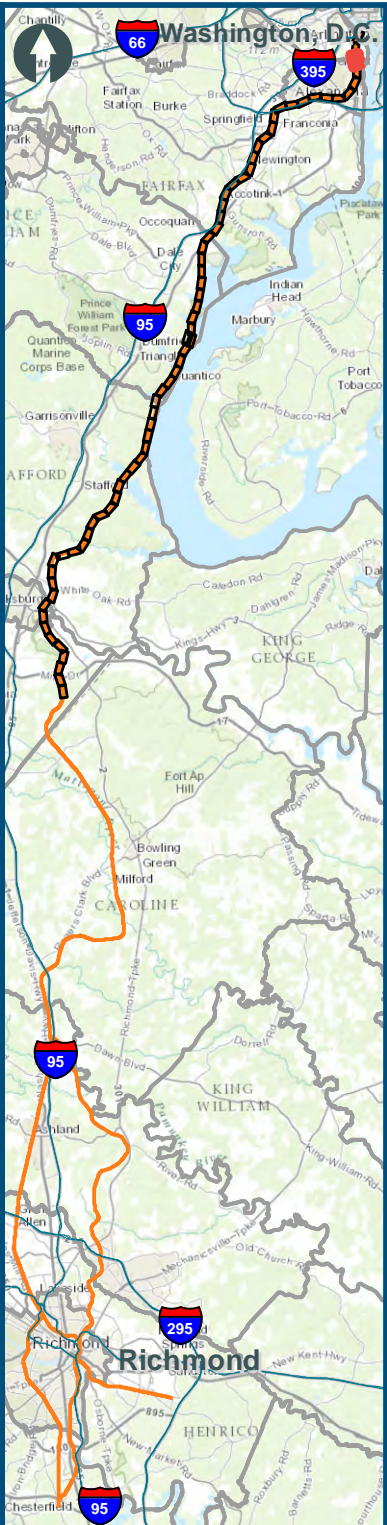
\\dlmain\GIS_DATA\GIS\Projects\11545_VA Dept of Rail\Public\Transportation\0239056_RAPS-4\AltDev-Concept\Eng\map_docs\mxd\Alt_Tech_Report\DC2RVA_Ch6_Appendices_NOV_HoldBridges_Alignments_11x17.mxd | Last Updated: 11.04.2015



- Legend**
- WMATA
 - VRE Station
 - CSXT Mileposts
 - Existing Track
 - New Track
 - Shifted Track
 - CSXT Right-of-Way
 - Streams

Figure H-2
Northern Virginia
Hold Bridges
Alignment Option

\\dlismain\GIS_DATA\GIS\Projects\11545_VA Dept of Rail\Public\Transportation\0239056_RAPS-4\AllDev-Concept\Eng\map_docs\mxd\Alt_Tech_Report\DC2RVA_Ch6_Appendices_NOV_HoldBridges_Alignments_11x17.mxd | Last Updated: 11.04.2015



0 150 300
Feet
1 inch = 300 feet
@ 11 x 17 inches
Projection: Lambert Conformal Conic
State Plane Virginia North FIPS 4501 Feet
North American Datum of 1983
Imagery: Bing Map Aerial

- Legend**
- CSXT Mileposts
 - Existing Track
 - New Track
 - Shifted Track
 - CSXT Right-of-Way
 - Streams

Figure H-3
Northern Virginia
Hold Bridges
Alignment Option

\\dlmain\GIS_DATA\GIS\Projects\11545_VA Dept of Rail\Public\Transportation\0239056_RAPS-4\AltDev-Concept\Eng\map_docs\mxd\Alt_Tech_Report\DC2RVA_Ch6_Appendices_NOV_HoldBridges_Alignments_11x17.mxd | Last Updated: 11.04.2015



Chantilly

Washington, D.C.

66

395

95

295

95

0

150

300

Feet

1 inch = 300 feet
@ 11 x 17 inches

Projection: Lambert Conformal Conic
State Plane Virginia North FIPS 4501 Feet
North American Datum of 1983

Imagery: Bing Map Aerial

●

CSXT Mileposts

—

Existing Track

—

New Track

—

Shifted Track

□

CSXT Right-of-Way

—

Streams

Figure H-4

Northern Virginia

Hold Bridges

Alignment Option

DC

TO

RICHMOND

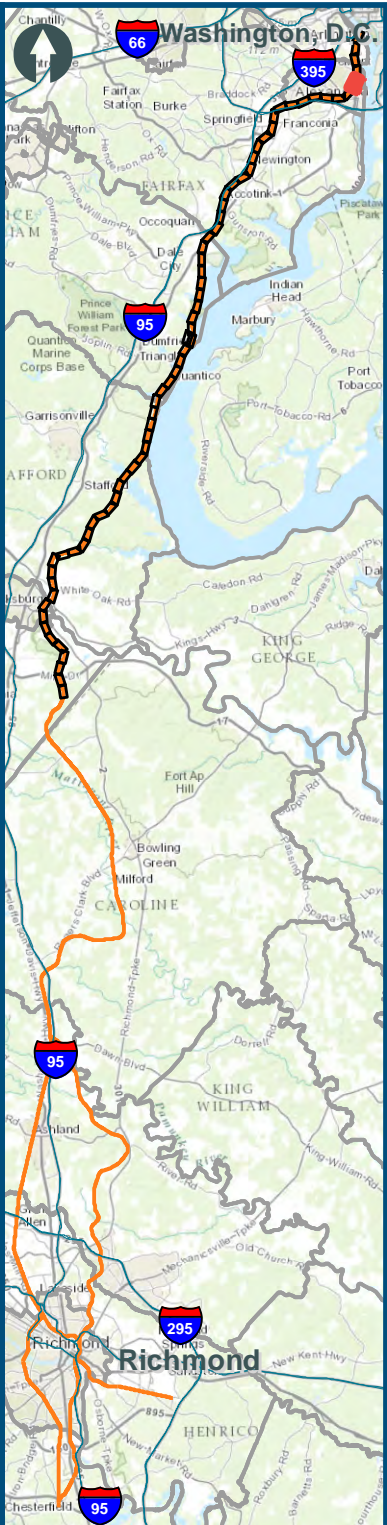
SOUTHEAST HIGH-SPEED RAIL

DRPT
Virginia Department of Rail and Public Transportation

U.S. Department of Transportation
Federal Railroad Administration

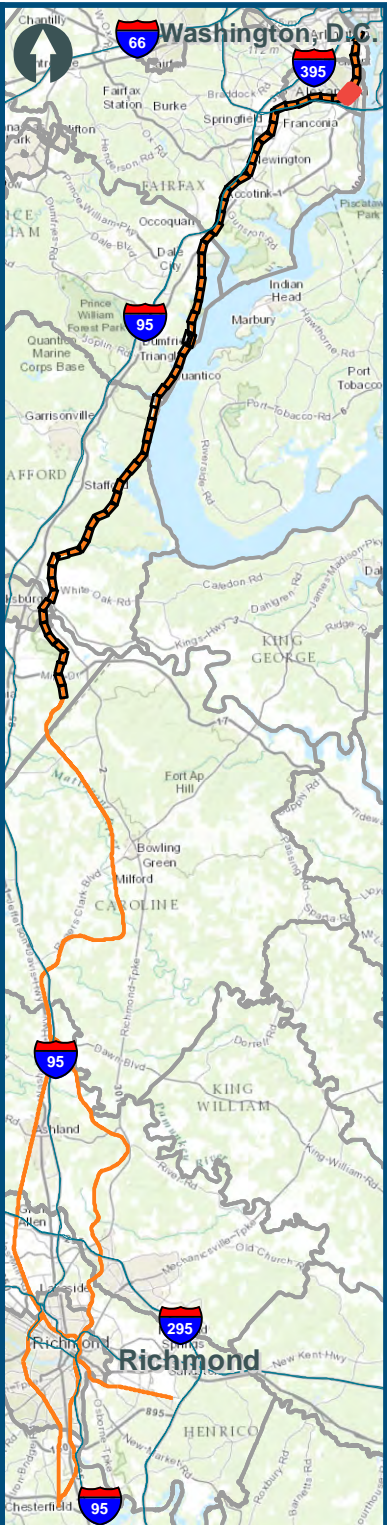
www.DC2RVArail.com

\\dlmain\GIS_DATA\GIS\Projects\11545_VA Dept of Rail\Public\Transportation\0239056_RAPS-4\AltDev-Concept\Eng\map_docs\mxd\Alt_Tech_Report\DC2RVA_Ch6_Appendices_NOV_HoldBridges_Alignments_11x17.mxd | Last Updated: 11.04.2015



- Legend**
- CSXT Mileposts
 - Existing Track
 - New Track
 - Shifted Track
 - CSXT Right-of-Way
 - Streams

Figure H-5
Northern Virginia
Hold Bridges
Alignment Option

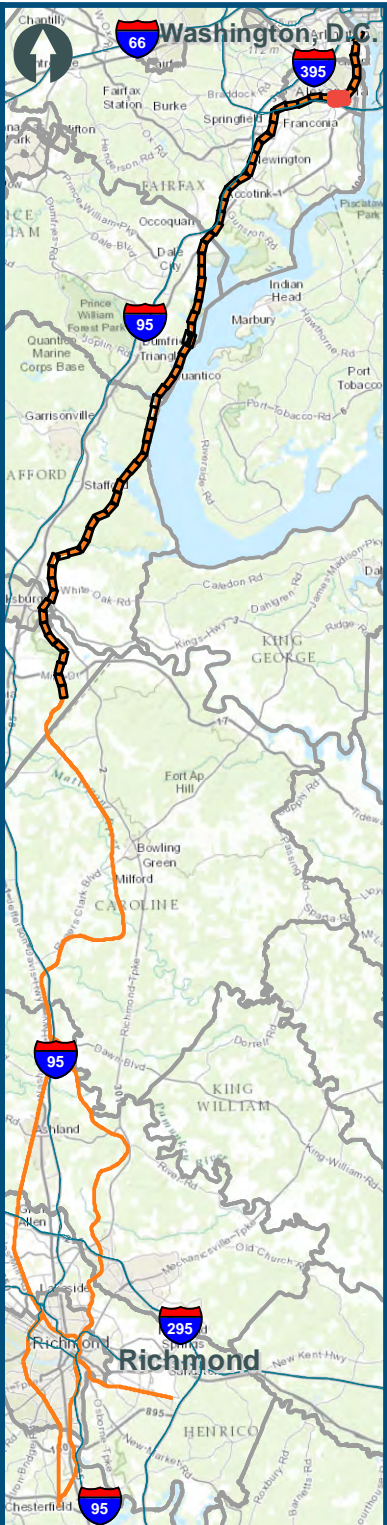


0 150 300
Feet
1 inch = 300 feet
@ 11 x 17 inches
Projection: Lambert Conformal Conic
State Plane Virginia North FIPS 4501 Feet
North American Datum of 1983
Imagery: Bing Map Aerial

- Legend**
- WMATA
 - Amtrak/VRE Station
 - CSXT Mileposts
 - Existing Track
 - New Track
 - Shifted Track
 - CSXT Right-of-Way
 - Streams

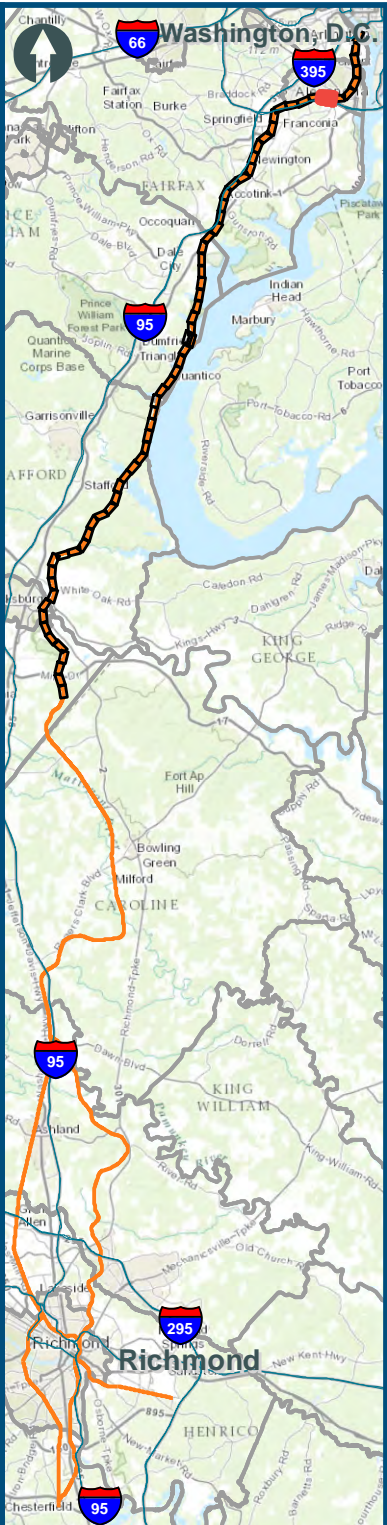
Figure H-6
Northern Virginia
Hold Bridges
Alignment Option

\\dlismain\GIS_DATA\GIS\Projects\11545_VA Dept of Rail\Public\Transportation\0239056_RAPS-4\AltDev-Concept\Eng\map_docs\mxd\Alt_Tech_Report\DC2RVA_Ch6_Appendices_NOV_HoldBridges_Alignments_11x17.mxd | Last Updated: 11.04.2015



- Legend**
- CSXT Mileposts
 - Existing Track
 - New Track
 - Shifted Track
 - CSXT Right-of-Way
 - Streams

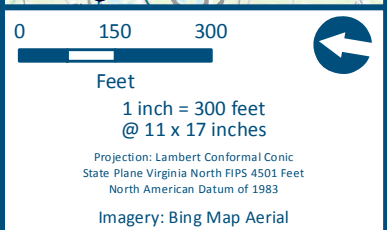
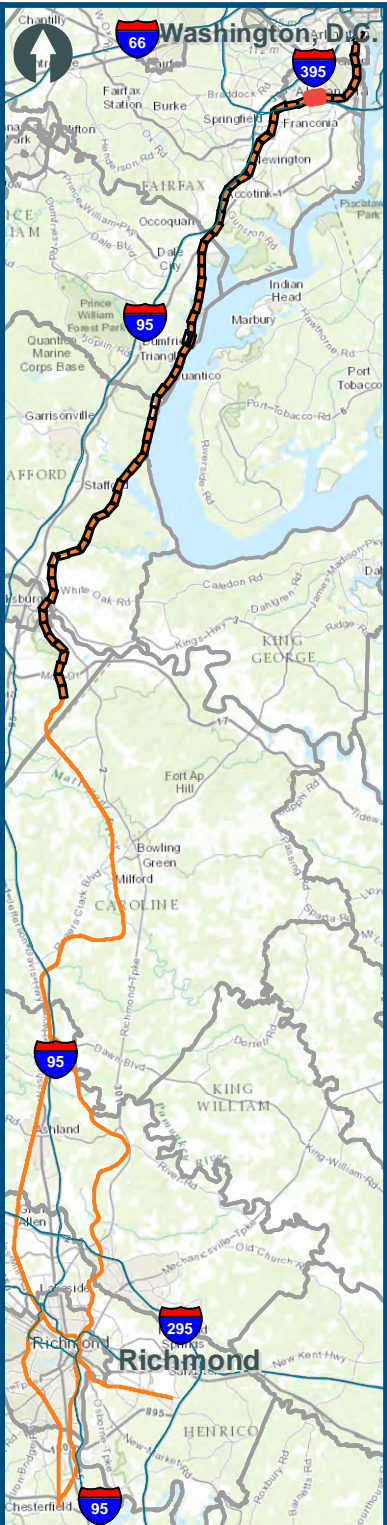
Figure H-7
Northern Virginia
Hold Bridges
Alignment Option



- Legend**
- CSXT Mileposts
 - Existing Track
 - New Track
 - Shifted Track
 - CSXT Right-of-Way
 - Streams

Figure H-8
Northern Virginia
Hold Bridges
Alignment Option

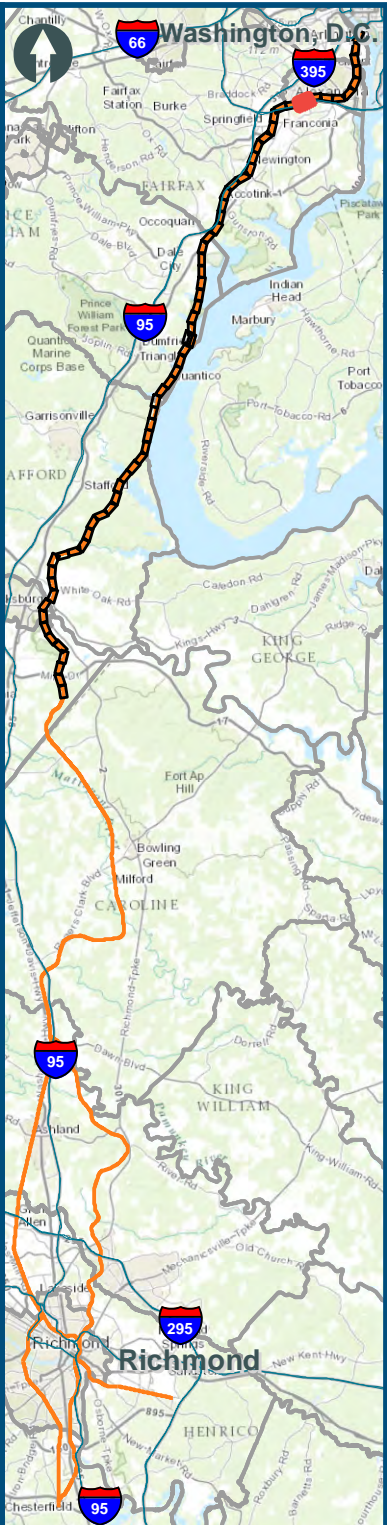
\\dlsmain\GIS_DATA\GIS\Projects\11545_VA Dept of Rail-Public Transportation\0239056_RAPS-4AltDev-ConceptEng\map_docs\mxd\Alt_Tech_Report\DC2RVA_Ch6_Appendices_NOV_HoldBridges_Alignments_11x17.mxd | Last Updated: 11.04.2015



- Legend**
- CSXT Mileposts
 - Existing Track
 - New Track
 - Shifted Track
 - CSXT Right-of-Way
 - Streams

Figure H-9
Northern Virginia
Hold Bridges
Alignment Option

\\dlmain\GIS_DATA\GIS\Projects\11545_VA Dept of Rails-Public\Transportation\0239056_RAPS-4\AllDev-Concept\Eng\map_docs\mxd\Alt_Tech_Report\DC2RVA_Ch6_Appendices_NOV_HoldBridges_Alignments_11x17.mxd | Last Updated: 11.04.2015

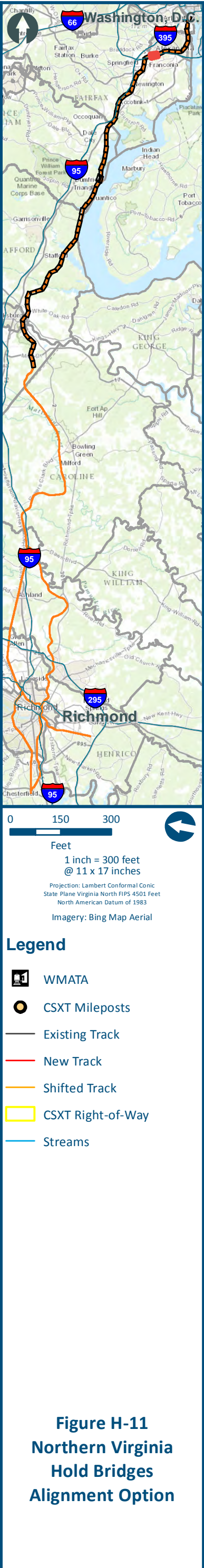
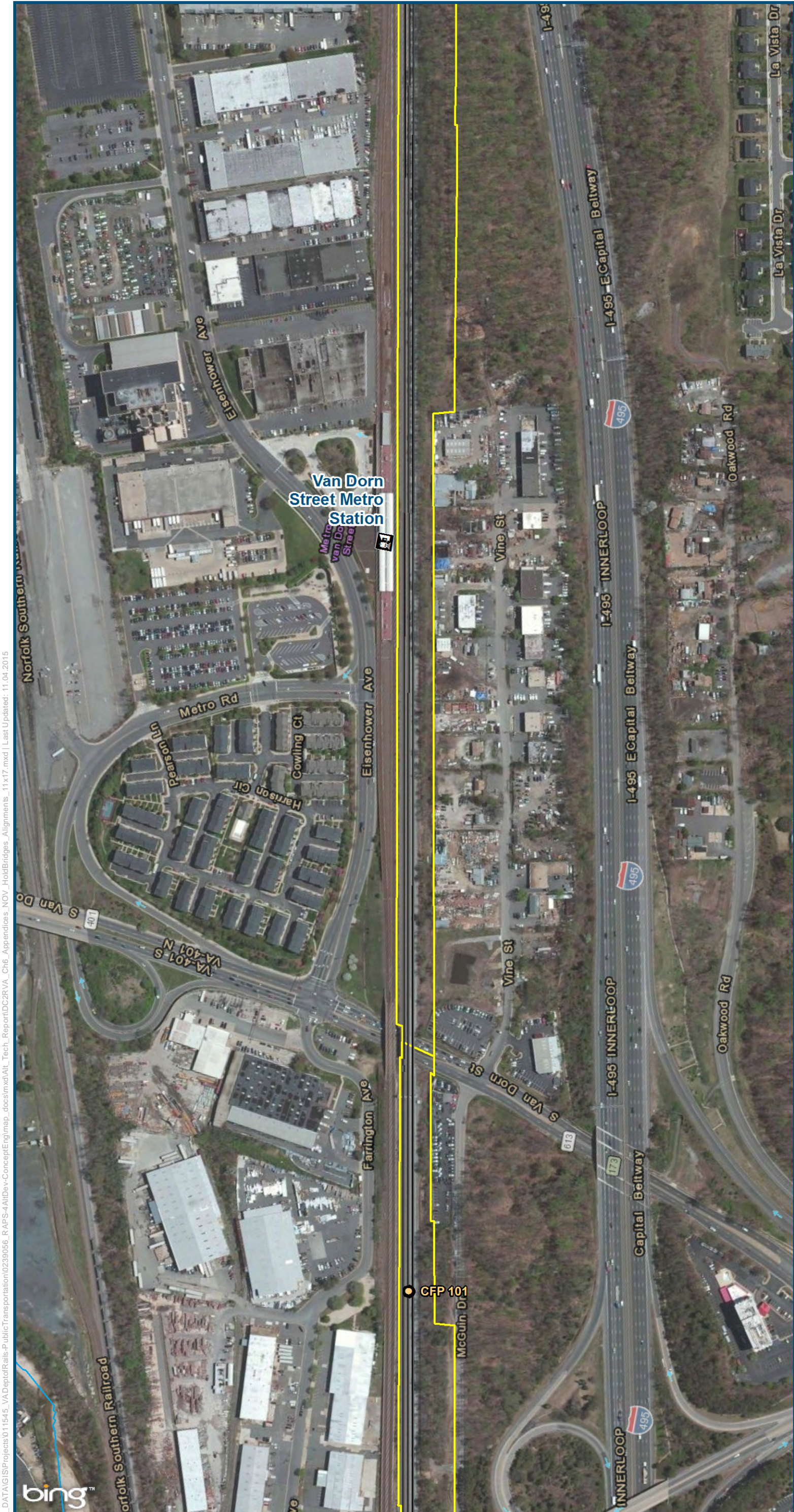


0 150 300
Feet
1 inch = 300 feet
@ 11 x 17 inches
Projection: Lambert Conformal Conic
State Plane Virginia North FIPS 4501 Feet
North American Datum of 1983
Imagery: Bing Map Aerial

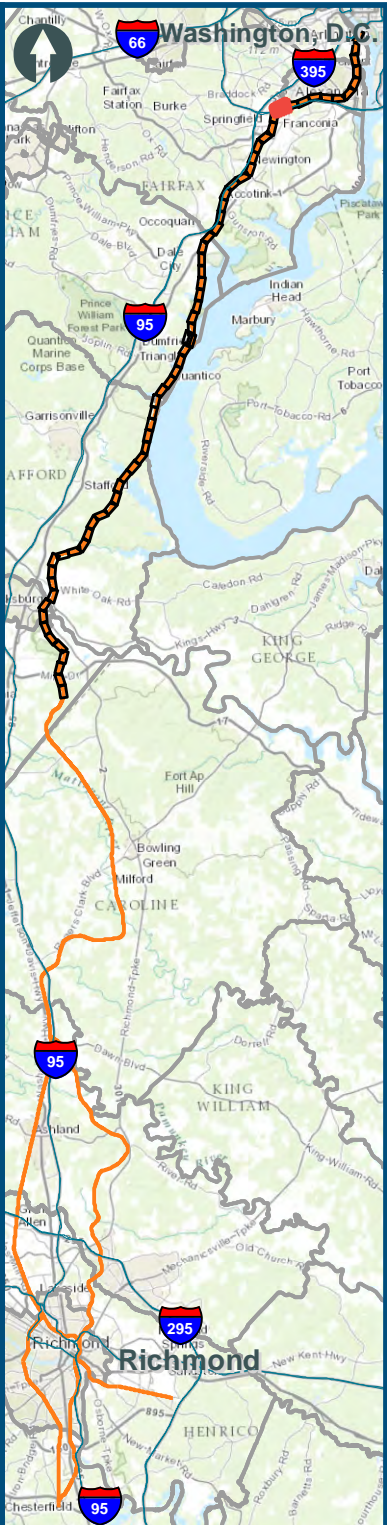
Legend

- CSXT Mileposts
- Existing Track
- New Track
- Shifted Track
- CSXT Right-of-Way
- Streams

Figure H-10
Northern Virginia
Hold Bridges
Alignment Option



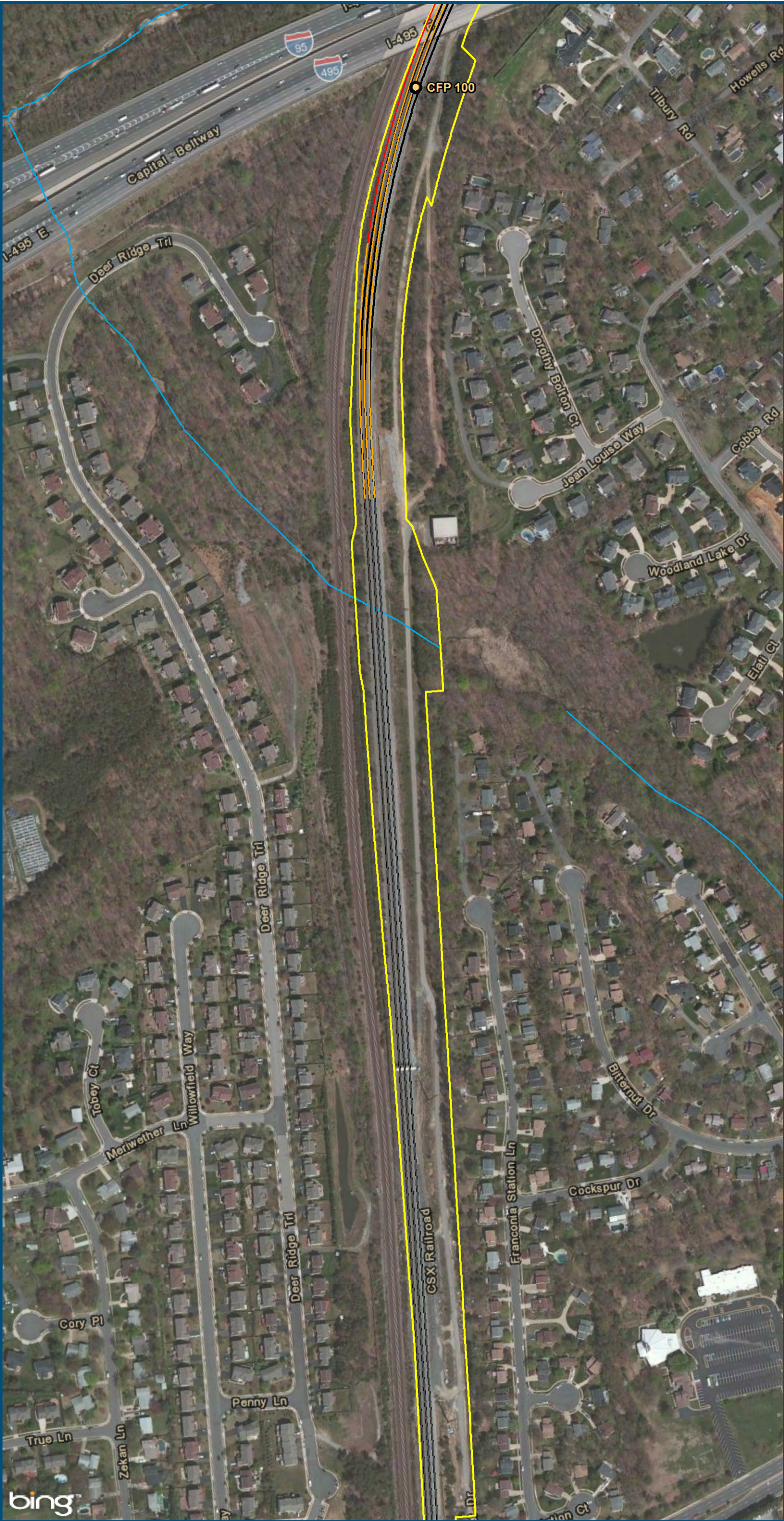
\\dlsmain\GIS_DATA\GIS\Projects\011545_VA Dept of Rail\Public\Transportation\0239056_RAPS-4\AltDev-Concept\Eng\map_docs\mxd\Alt_Tech_Report\DC2RVA_Ch6_Appendices_NOV_HoldBridges_Alignments_11x17.mxd | Last Updated: 11.04.2015

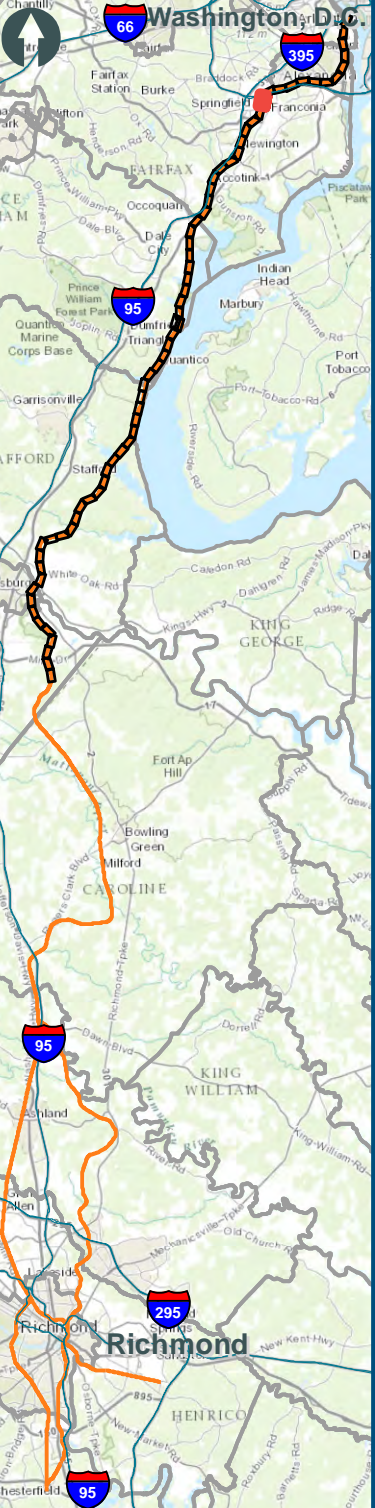



- Legend**
- CSXT Mileposts
 - Existing Track
 - New Track
 - Shifted Track
 - CSXT Right-of-Way
 - Streams

Figure H-12
Northern Virginia
Hold Bridges
Alignment Option

\\dlsmain\GIS_DATA\GIS\Projects\11545_VA\DeptofRails-Public\Transportation\0239056_RAPS-4\AltDev-Concept\Eng\map_docs\mxd\Alt_Tech_Report\DC2RVA_Ch6_Appendices_NOV_HoldBridges_Alignments_11x17.mxd | Last Updated: 11.04.2015





0 150 300

Feet

1 inch = 300 feet
@ 11 x 17 inches

Projection: Lambert Conformal Conic
State Plane Virginia North FIPS 4501 Feet
North American Datum of 1983

Imagery: Bing Map Aerial

Legend









-  CSXT Mileposts
-  Existing Track
-  New Track
-  Shifted Track
-  CSXT Right-of-Way
-  Streams

Figure H-13


Northern Virginia

Hold Bridges

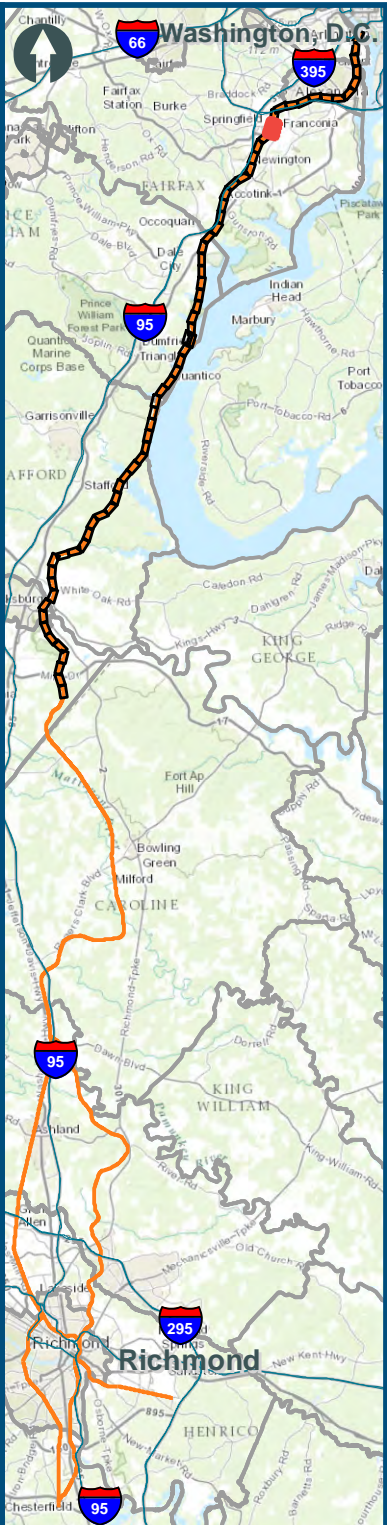
Alignment Option



www.DC2RVArail.com



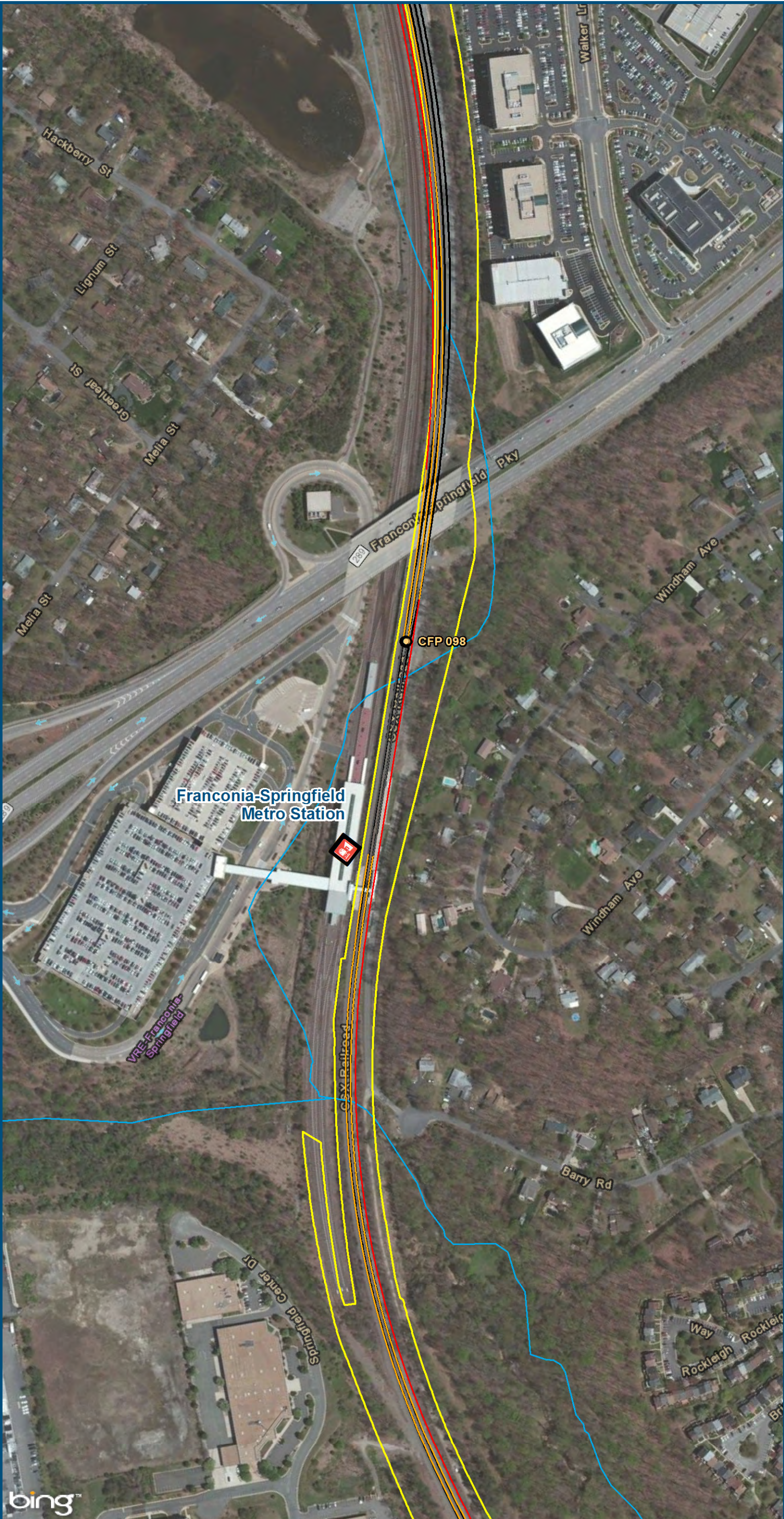
\\dlismain\GIS_DATA\GIS\Projects\11545_VA\Dev\Concept\Eng\map_docs\mxd\Alt_Tech_Report\DC2RVA_Ch6_Appendices_NOV_HoldBridges_Alignments_11x17.mxd | Last Updated: 11.04.2015



- Legend**
- CSXT Mileposts
 - Existing Track
 - New Track
 - Shifted Track
 - CSXT Right-of-Way
 - Streams

Figure H-14
Northern Virginia
Hold Bridges
Alignment Option

\\dlsmain\GIS_DATA\GIS\Projects\011545_VA Dept of Rail\Public\Transportation\0239056_RAPS-4\AltDev-Concept\Eng\map_docs\mxd\Alt_Tech_Report\DC2RVA_Ch6_Appendices_NOV_HoldBridges_Alignments_11x17.mxd | Last Updated: 11.04.2015



Chantilly

0 150 300

Feet

1 inch = 300 feet
@ 11 x 17 inches

Projection: Lambert Conformal Conic
State Plane Virginia North FIPS 4501 Feet
North American Datum of 1983

Imagery: Bing Map Aerial

Legend

- VRE/Wmata Station
- CSXT Mileposts
- Existing Track
- New Track
- Shifted Track
- CSXT Right-of-Way
- Streams

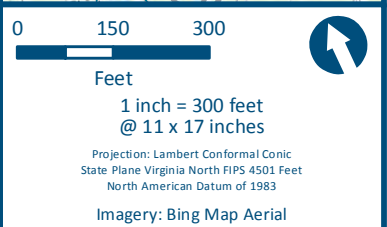
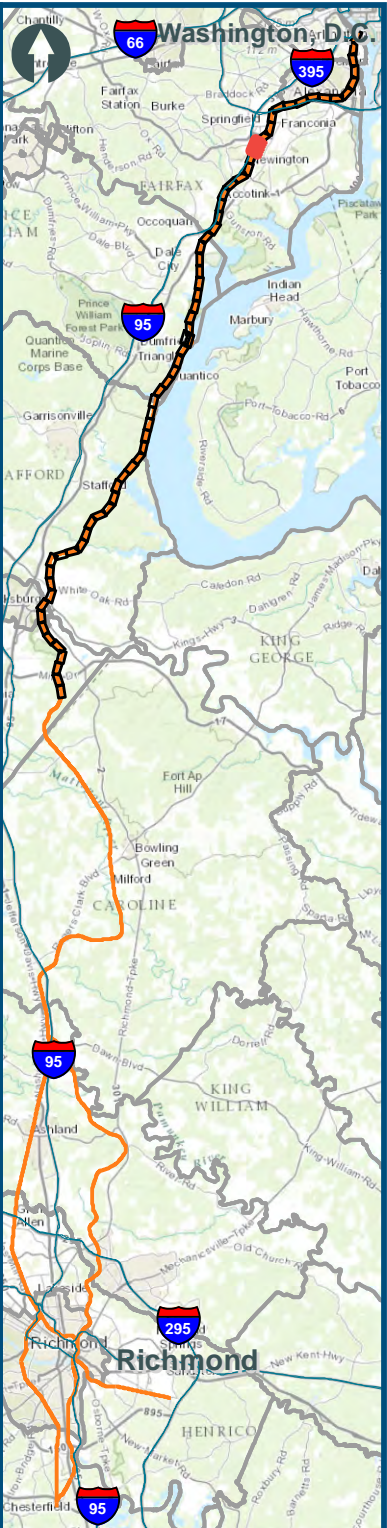
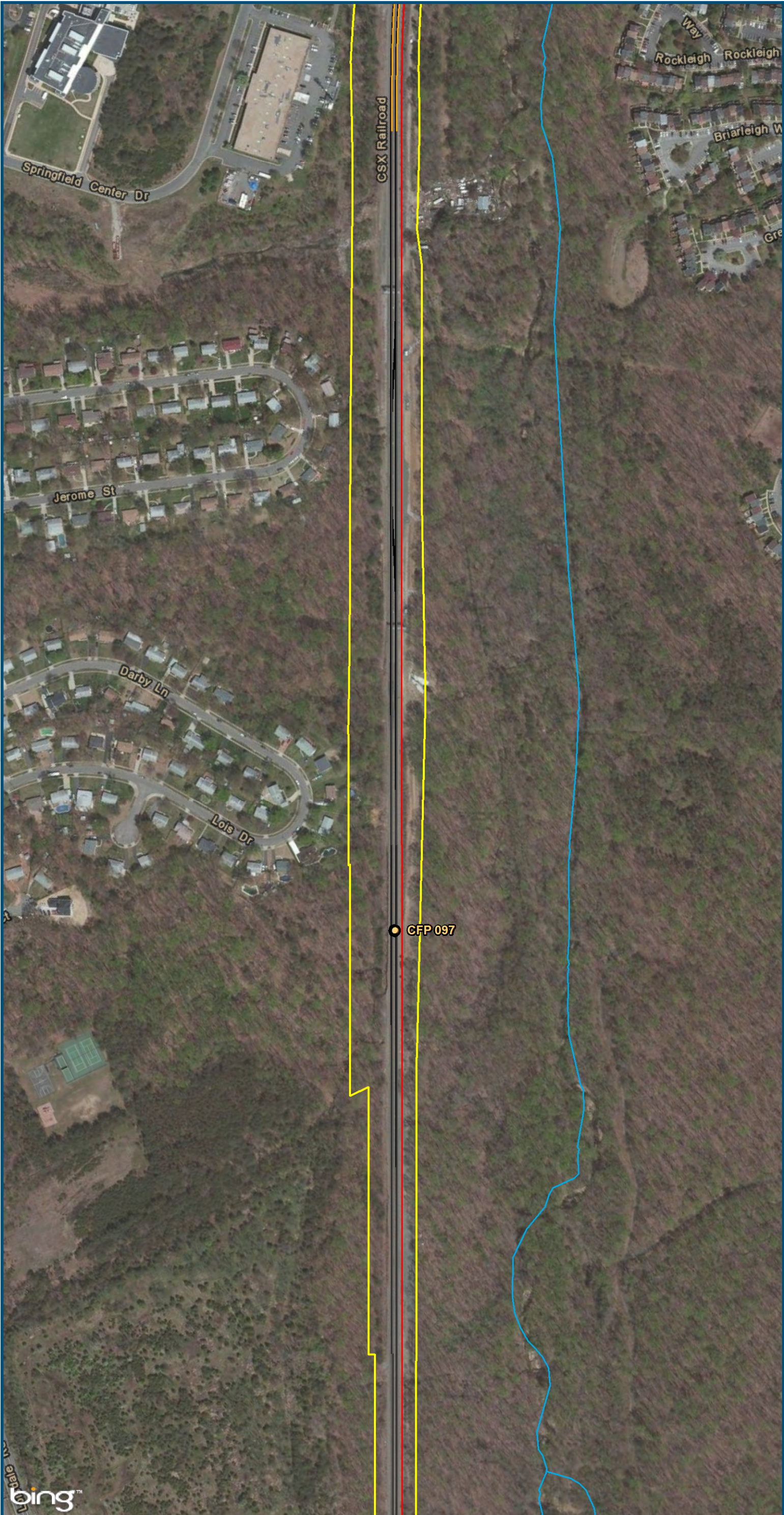
Figure H-15

Northern Virginia

Hold Bridges

Alignment Option

www.DC2RVArail.com



- Legend**
- CSXT Mileposts
 - Existing Track
 - New Track
 - Shifted Track
 - CSXT Right-of-Way
 - Streams

Figure H-16
Northern Virginia
Hold Bridges
Alignment Option

\\dlsmain\GIS_DATA\GIS\Projects\011545_VA Dept of Rail\Public\Transportation\0239056_RAPS-4\AllDev-Concept\Eng\map_docs\mxd\Alt_Tech_Report\DC2RVA_Ch6_Appendices_NOV_HoldBridges_Alignments_11x17.mxd | Last Updated: 11.04.2015



North Arrow

66

Washington, D.C.

395

Springfield

95

Richmond

95

Richmond

0

150

300

Feet

1 inch = 300 feet
@ 11 x 17 inches

Projection: Lambert Conformal Conic
State Plane Virginia North FIPS 4501 Feet
North American Datum of 1983

Imagery: Bing Map Aerial

CSXT Mileposts

Existing Track

New Track

Shifted Track

CSXT Right-of-Way

Streams

Figure H-17

Northern Virginia

Hold Bridges

Alignment Option

DC

TO

RICHMOND

SOUTHEAST HIGH SPEED RAIL

DRPT
Virginia Department of Rail and Public Transportation

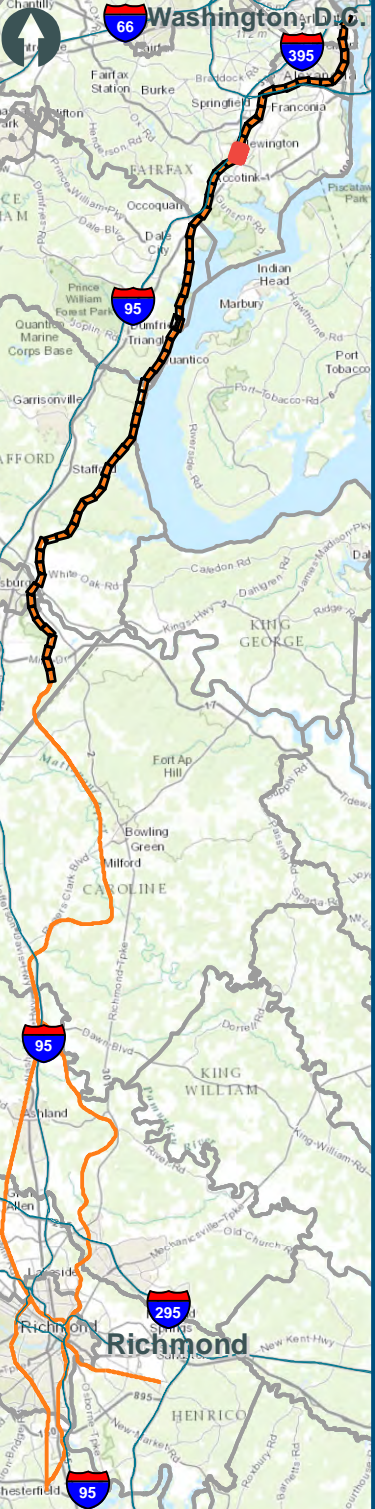

U.S. Department of Transportation
Federal Railroad Administration

www.DC2RVArail.com

DC TO RICHMOND
SOUTHEAST HIGH SPEED RAIL

\\dlsmain\GIS_DATA\GIS\Projects\11545_VA Dept of Rail\Public\Transportation\0239056_RAPS-4\AltDev-Concept\Eng\map_docs\mxd\Alt_Tech_Report\DC2RVA_Ch6_Appendices_NOV_HoldBridges_Alignments_11x17.mxd | Last Updated: 11.04.2015





0 150 300

Feet

1 inch = 300 feet
@ 11 x 17 inches



Projection: Lambert Conformal Conic
State Plane Virginia North FIPS 4501 Feet
North American Datum of 1983

Imagery: Bing Map Aerial


Legend

- CSXT Mileposts
- Existing Track
- New Track
- Shifted Track
- CSXT Right-of-Way
- Streams

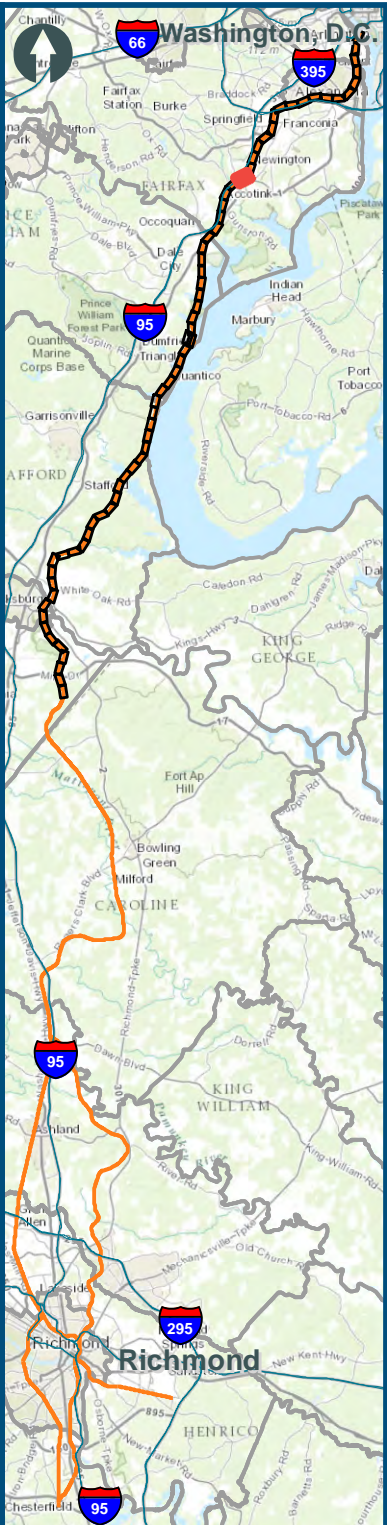
Figure H-18
Northern Virginia
Hold Bridges
Alignment Option



www.DC2RVArail.com



\\dlmain\GIS_DATA\GIS\Projects\11545_VA Dept of Rail-Public\Transportation\0239056_RAPS-4\AllDev-Concept\Eng\Map_docs\mxd\Alt_Tech_Report\DC2RVA_Ch6_Appendices_NOV_HoldBridges_Alignments_11x17.mxd | Last Updated: 11.04.2015

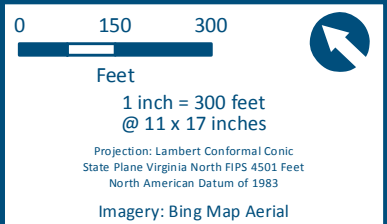
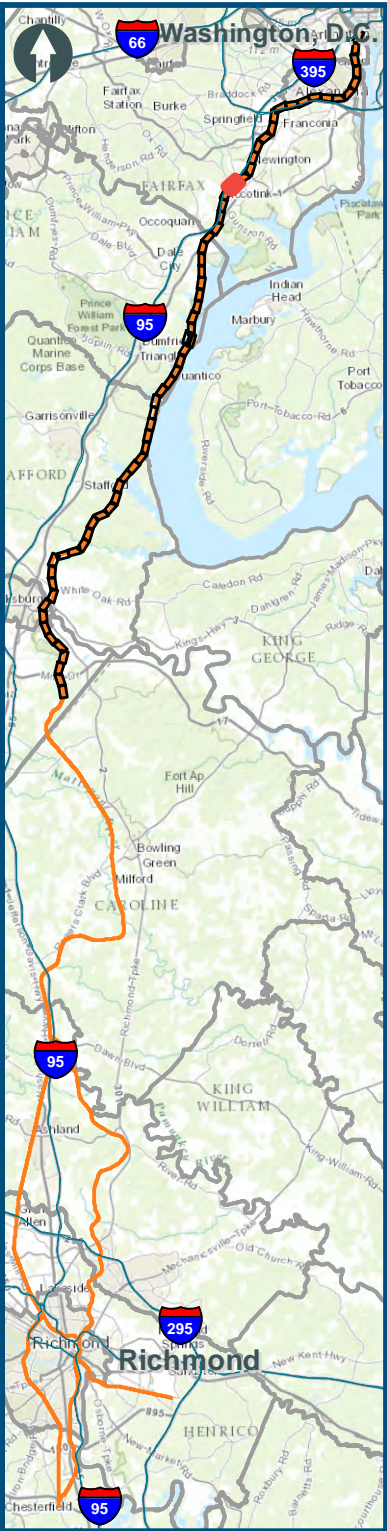
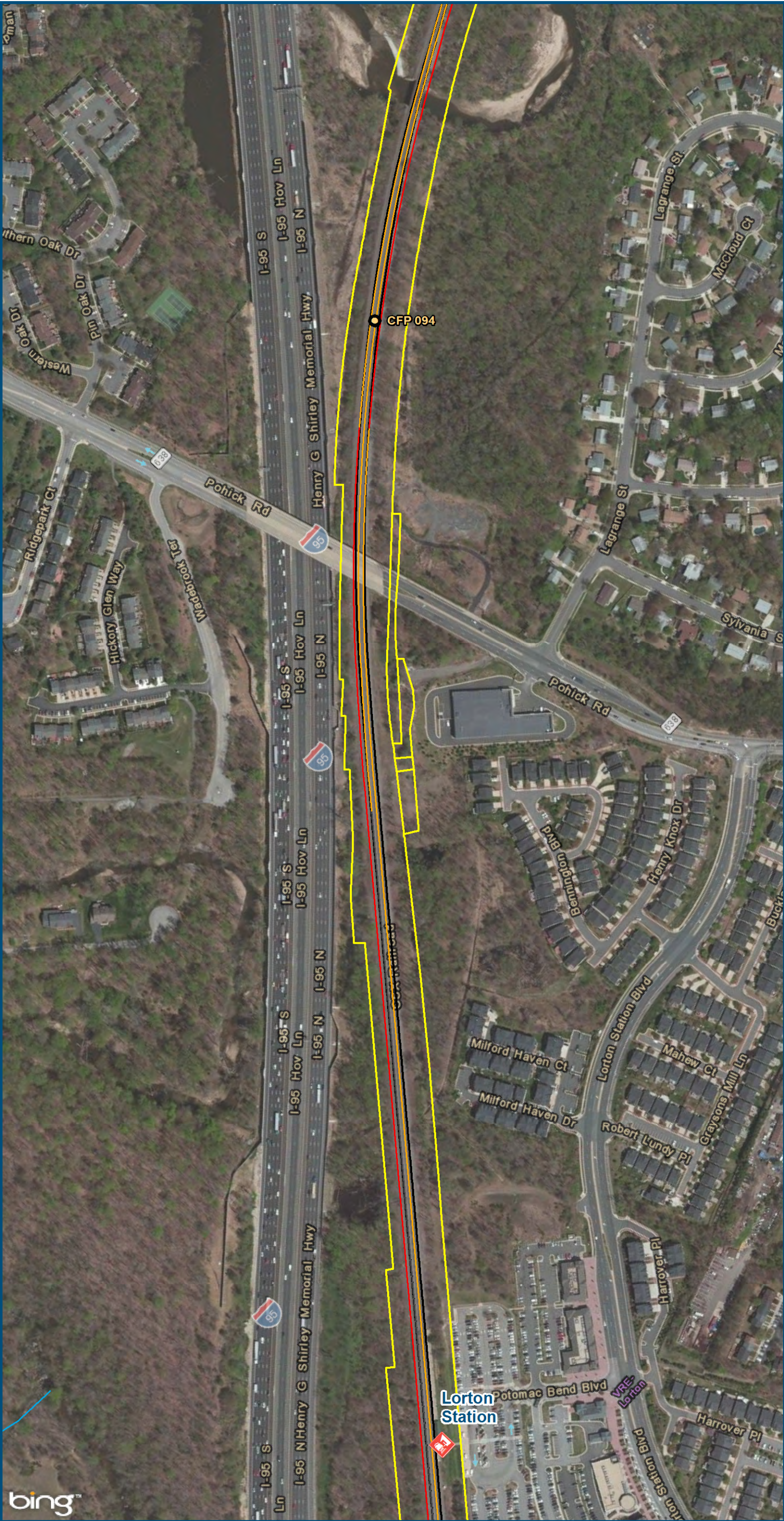


0 150 300
Feet
1 inch = 300 feet
@ 11 x 17 inches
Projection: Lambert Conformal Conic
State Plane Virginia North FIPS 4501 Feet
North American Datum of 1983
Imagery: Bing Map Aerial

- Legend**
- CSXT Mileposts
 - Existing Track
 - New Track
 - Shifted Track
 - CSXT Right-of-Way
 - Streams

Figure H-19
Northern Virginia
Hold Bridges
Alignment Option

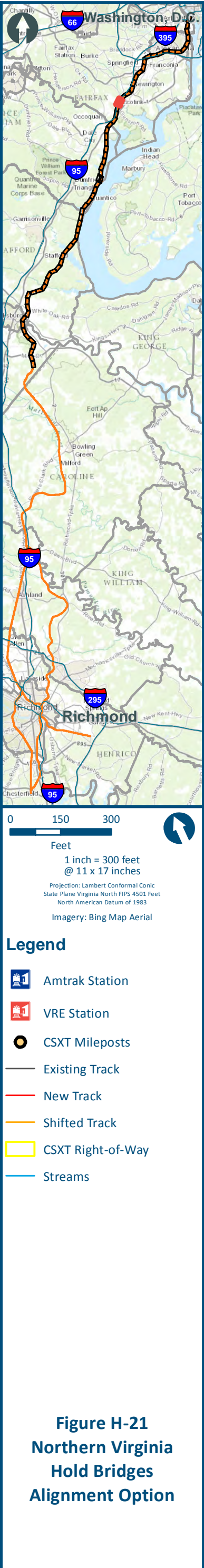
\\dlsmain\GIS_DATA\GIS\Projects\11545_VA Dept of Rail\Public\Transportation\0239056_RAPS-4\AltDev-Concept\Eng\map_docs\mxd\Alt_Tech_Report\DC2RVA_Ch6_Appendices_NOV_HoldBridges_Alignments_11x17.mxd | Last Updated: 11.04.2015



- Legend**
- VRE Station
 - CSXT Mileposts
 - Existing Track
 - New Track
 - Shifted Track
 - CSXT Right-of-Way
 - Streams

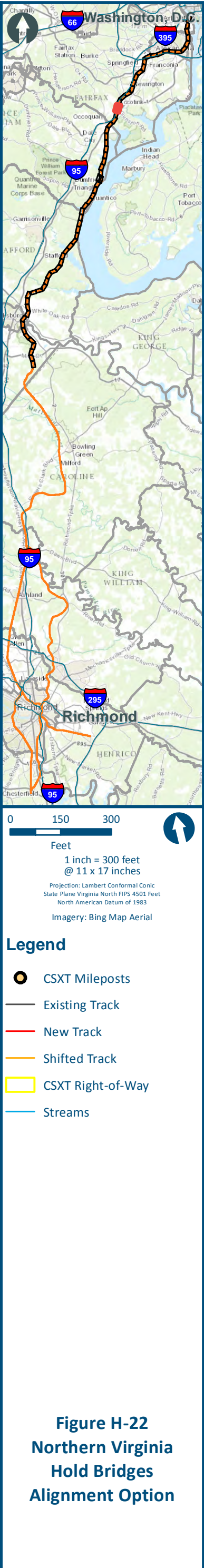
Figure H-20
Northern Virginia
Hold Bridges
Alignment Option

\\dlsmain\GIS_DATA\GIS\Projects\11545_VA Dept of Rail-Public Transportation\0239056_RAPS-4\AltDev-ConceptEng\map_docs\mxd\Alt_Tech_Report\DC2RVA_Ch6_Appendices_NOV_HoldBridges_Alignments_11x17.mxd | Last Updated: 11.04.2015

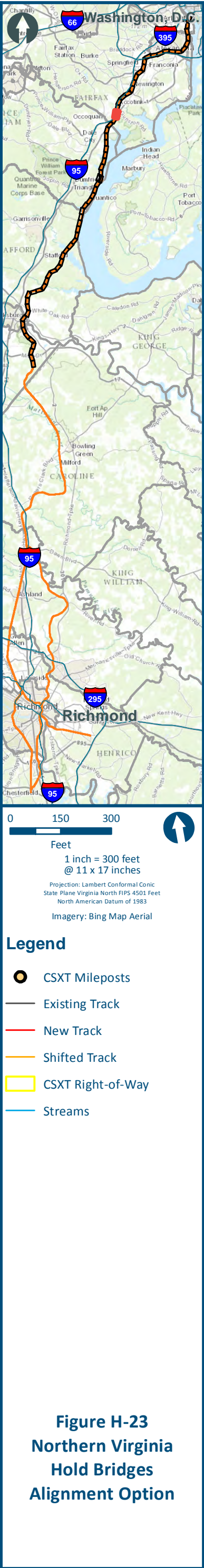
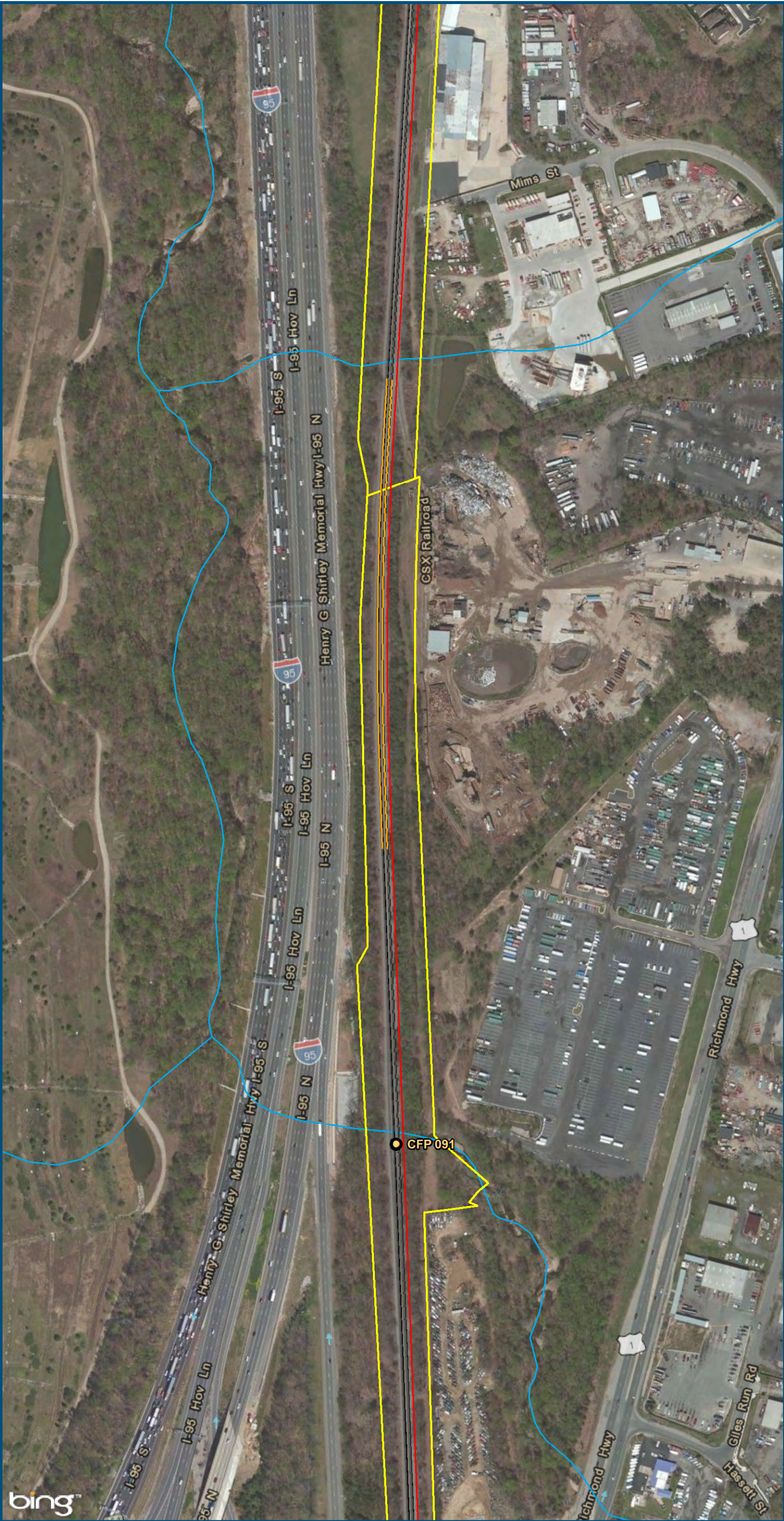


- Legend**
- Amtrak Station
 - VRE Station
 - CSXT Mileposts
 - Existing Track
 - New Track
 - Shifted Track
 - CSXT Right-of-Way
 - Streams

Figure H-21
Northern Virginia
Hold Bridges
Alignment Option



\\dlsmain\GIS_DATA\GIS\Projects\011545_VA Dept of Rails-Public\Transportation\0239056_RAPS-4\AltDev-Concept\Eng\map_docs\mxd\Alt_Tech_Report\DC2RVA_Ch6_Appendices_NOV_HoldBridges_Alignments_11x17.mxd | Last Updated: 11.04.2015



bing™

DRPT
Virginia Department of Rail and Public Transportation

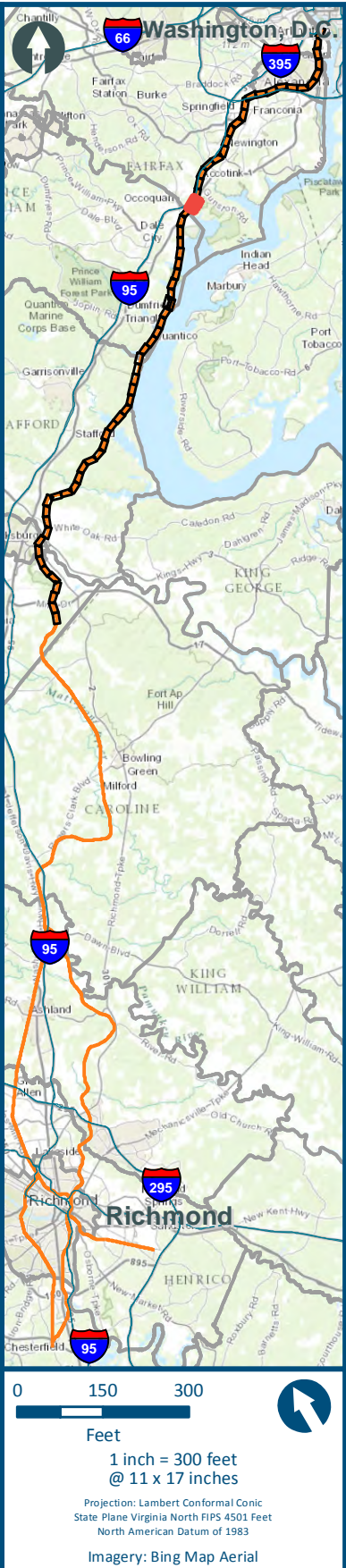


U.S. Department of Transportation
Federal Railroad Administration

www.DC2RVArail.com

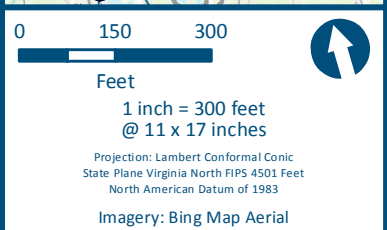
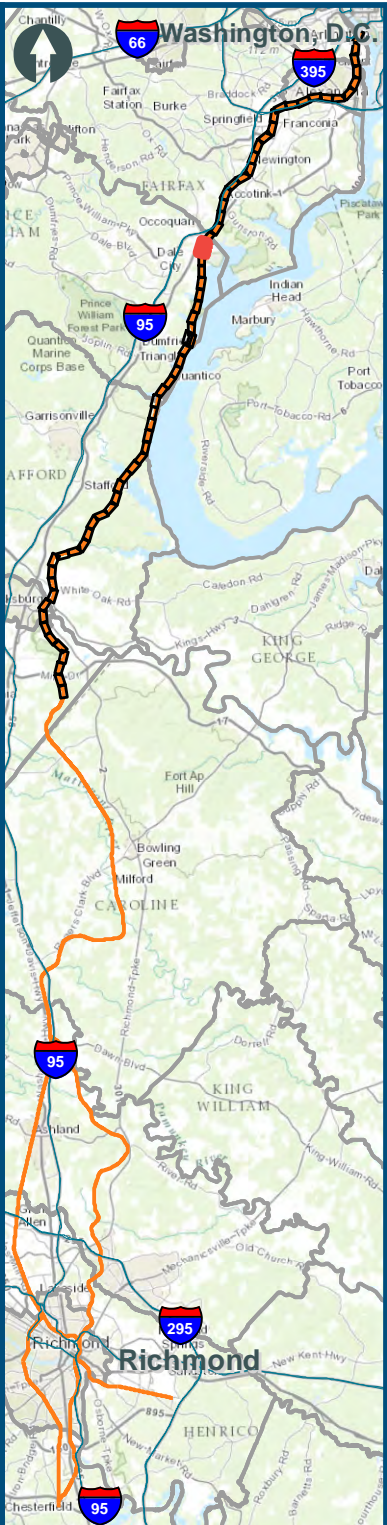
DC TO RICHMOND
SOUTHEAST HIGH SPEED RAIL

\\dlsmain\GIS_DATA\GIS\Projects\11545_VA Dept of Rail\Public\Transportation\0239056_RAPS-4\AltDev-Concept\Eng\map_docs\mxd\Alt_Tech_Report\DC2RVA_Ch6_Appendices_NOV_HoldBridges_Alignments_11x17.mxd | Last Updated: 11.04.2015



- Legend**
- CSXT Mileposts
 - Existing Track
 - New Track
 - Shifted Track
 - CSXT Right-of-Way
 - Streams

Figure H-24
Northern Virginia
Hold Bridges
Alignment Option










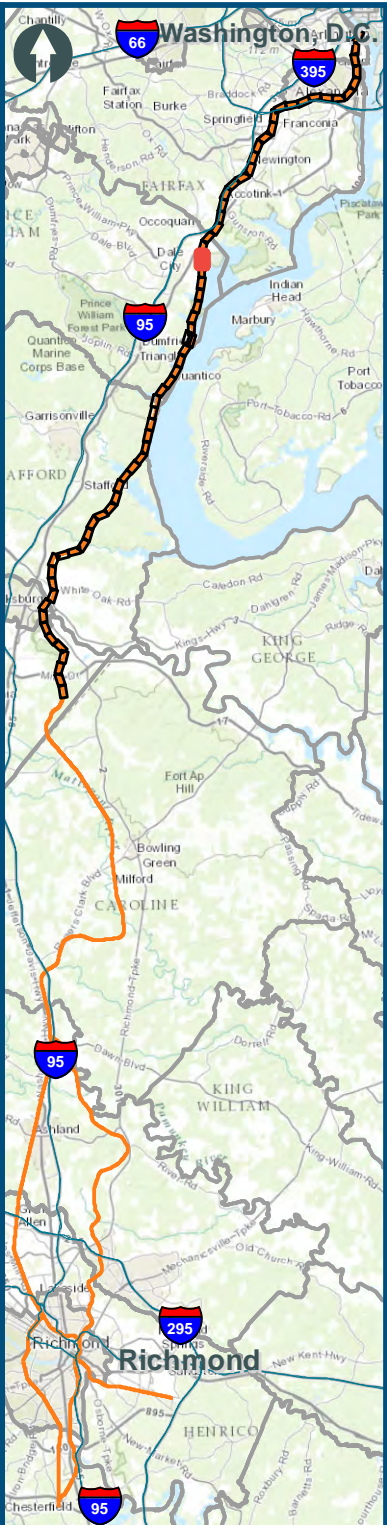
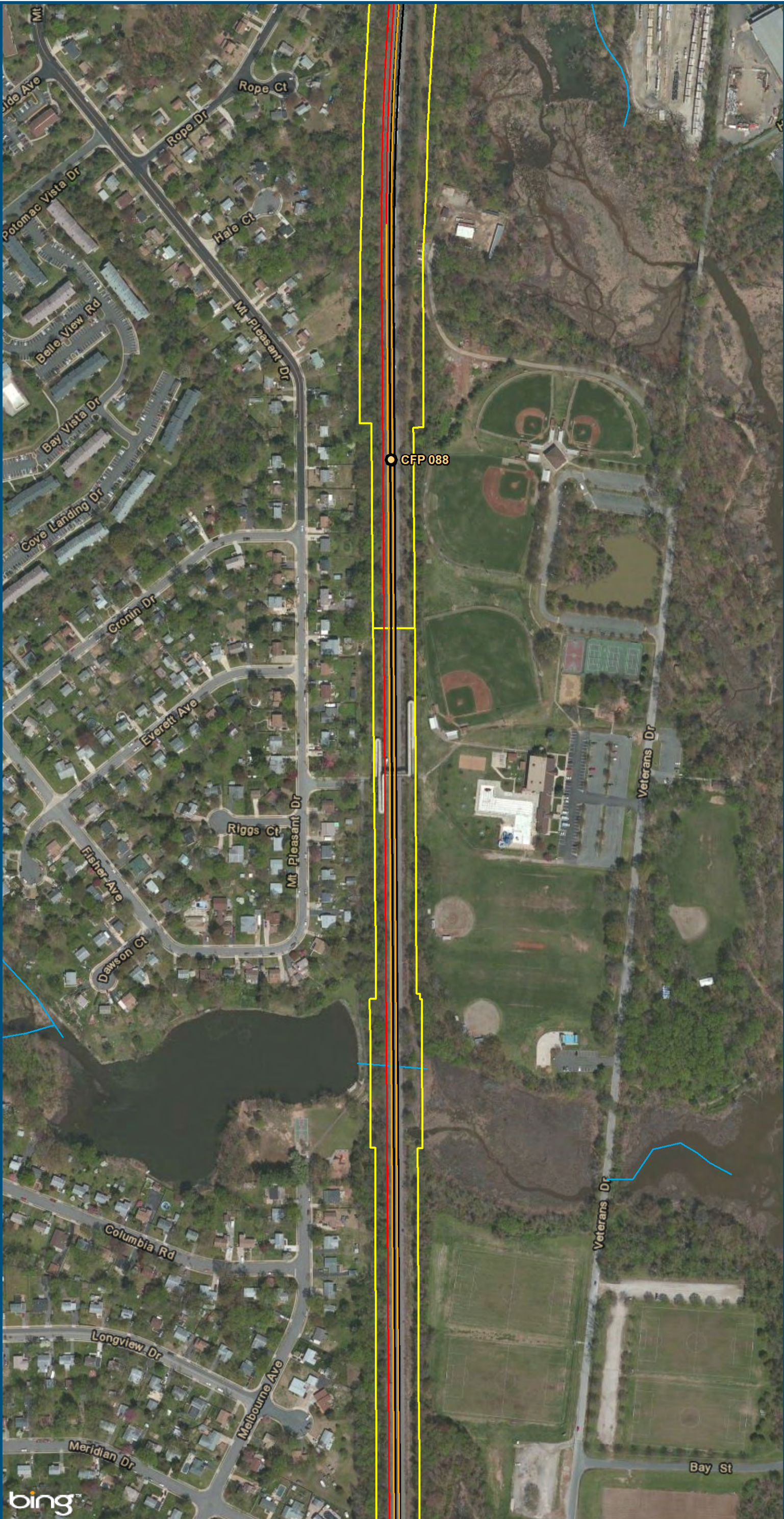
- ### Legend
-  Amtrak/VRE Station
 -  CSXT Mileposts
 -  Existing Track
 -  New Track
 -  Shifted Track
 -  CSXT Right-of-Way
 -  Streams

Figure H-26
Northern Virginia
Hold Bridges
Alignment Option

\\dlsmain\GIS_DATA\GIS\Projects\11545_VA\Depts\Rail-Public\Transportation\0239056_RAPS-4\AltDev-Concept\Eng\Map_docs\mxd\Alt_Tech_Report\DC2RVA_Ch6_Appendices_NOV_HoldBridges_Alignments_11x17.mxd | Last Updated: 11.04.2015

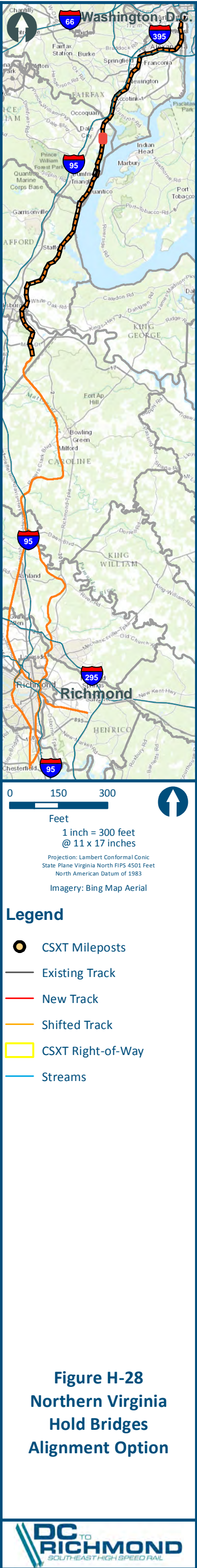


0 150 300
Feet
1 inch = 300 feet
@ 11 x 17 inches
Projection: Lambert Conformal Conic
State Plane Virginia North FIPS 4501 Feet
North American Datum of 1983
Imagery: Bing Map Aerial

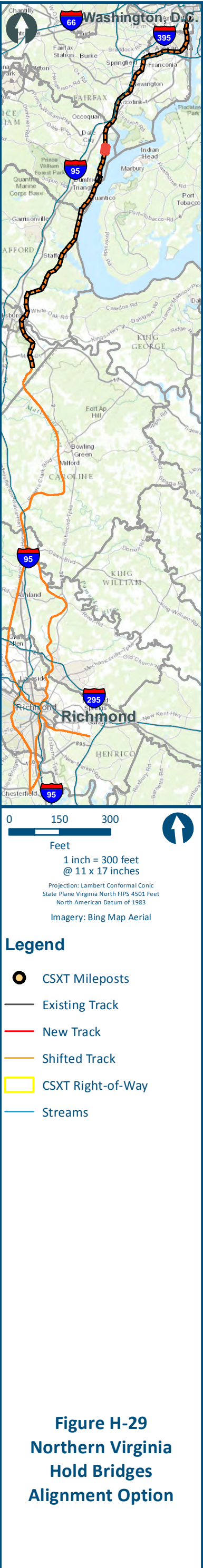
- Legend**
- CSXT Mileposts
 - Existing Track
 - New Track
 - Shifted Track
 - CSXT Right-of-Way
 - Streams

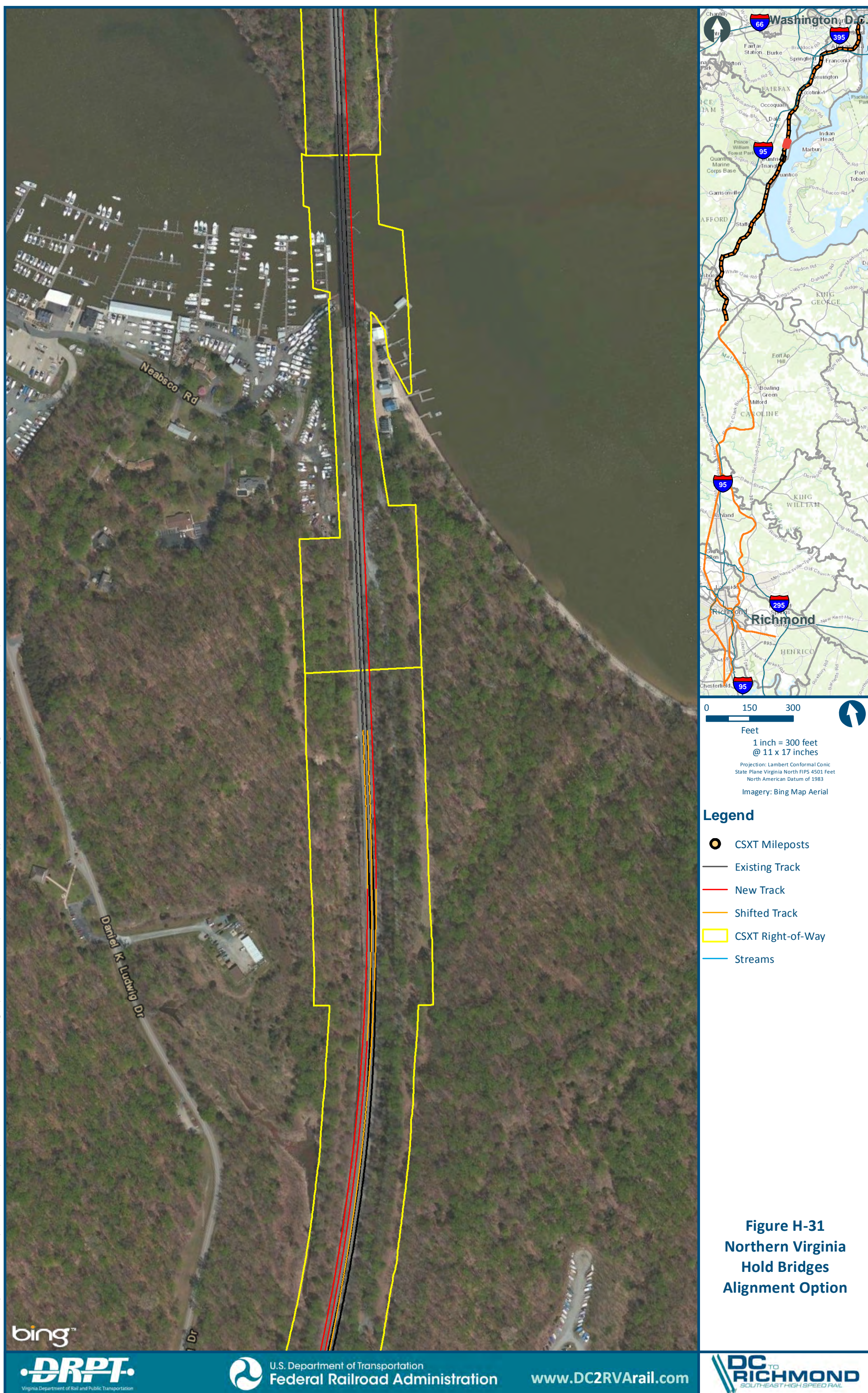
Figure H-27
Northern Virginia
Hold Bridges
Alignment Option

\\dlismain\GIS_DATA\GIS\Projects\011545_VA Dept of Rail\Public Transportation\0239056_RAPS-4AltDev-ConceptEng\map_docs\mxd\Alt_Tech_Report\DC2RVA_Ch6_Appendices_NOV_HoldBridges_Alignments_11x17.mxd | Last Updated: 11.04.2015

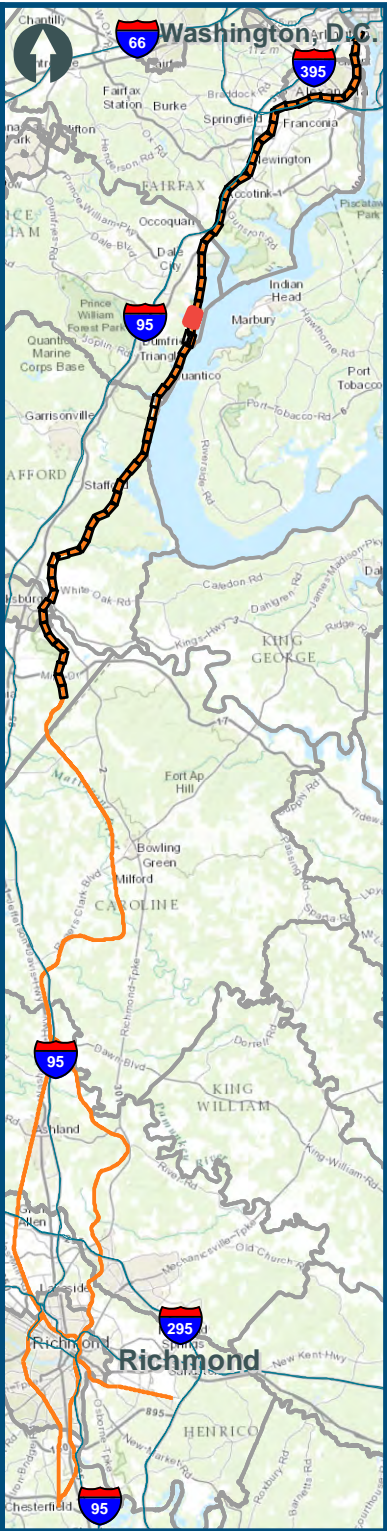


\\dlsmain\GIS_DATA\GIS\Projects\011545_VA Dept of Rail-Public Transportation\0239056_RAPS-4AltDev-ConceptEng\map_docs\mxd\Alt_Tech_Report\DC2RVA_Ch6_Appendices_NOV_HoldBridges_Alignments_11x17.mxd | Last Updated: 11.04.2015





\\dlsmain\GIS_DATA\GIS\Projects\011545_VA Dept of Rails-Public\Transportation\0239056_RAPS-4\AltDev-Concept\Eng\map_docs\mxd\Alt_Tech_Report\DC2RVA_Ch6_Appendices_NOV_HoldBridges_Alignments_11x17.mxd | Last Updated: 11.04.2015

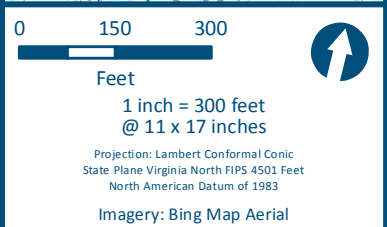
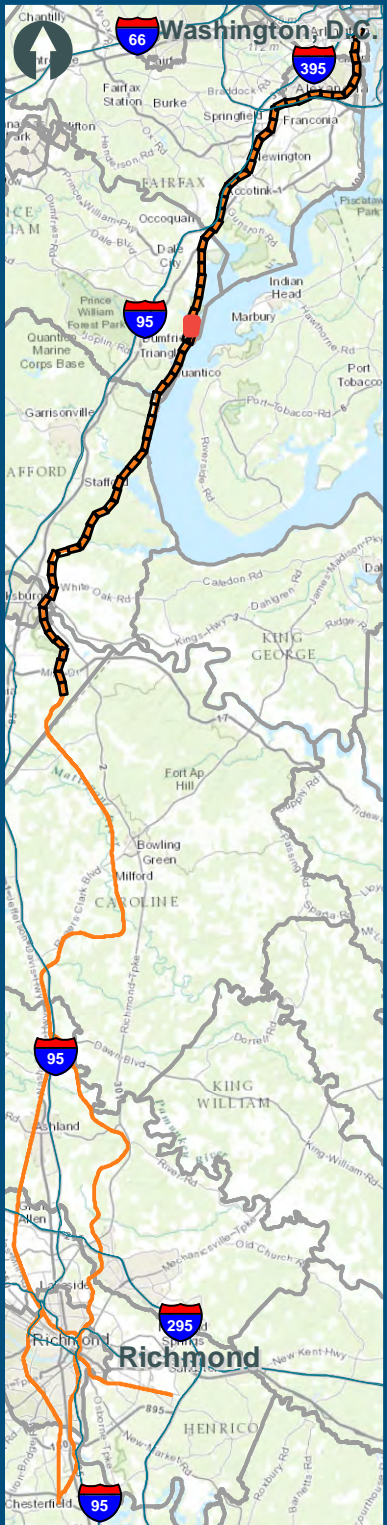


0 150 300
Feet
1 inch = 300 feet
@ 11 x 17 inches
Projection: Lambert Conformal Conic
State Plane Virginia North FIPS 4501 Feet
North American Datum of 1983
Imagery: Bing Map Aerial

- Legend**
- CSXT Mileposts
 - Existing Track
 - New Track
 - Shifted Track
 - CSXT Right-of-Way
 - Streams

Figure H-32
Northern Virginia
Hold Bridges
Alignment Option

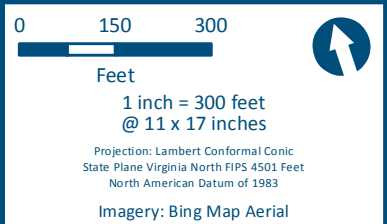
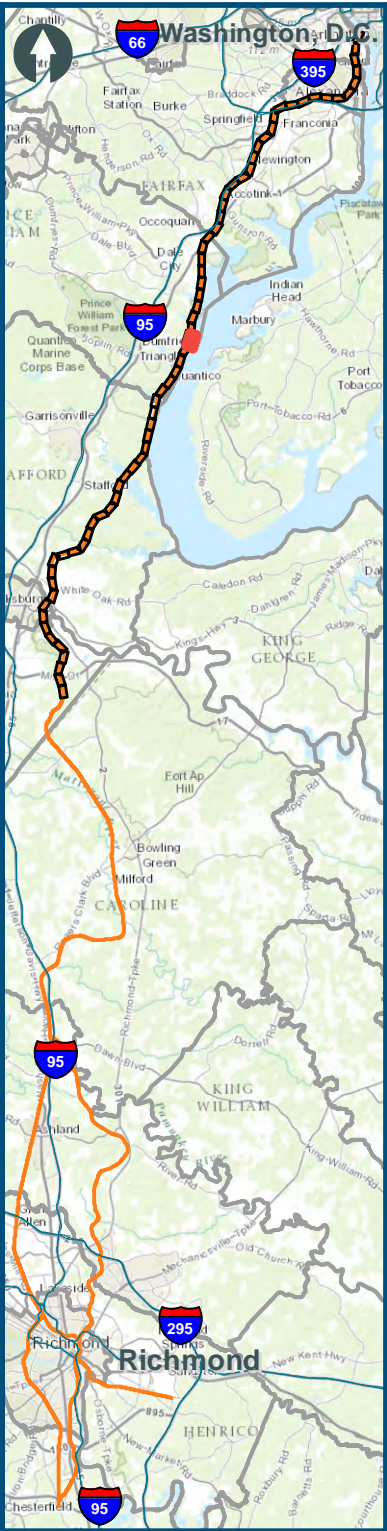
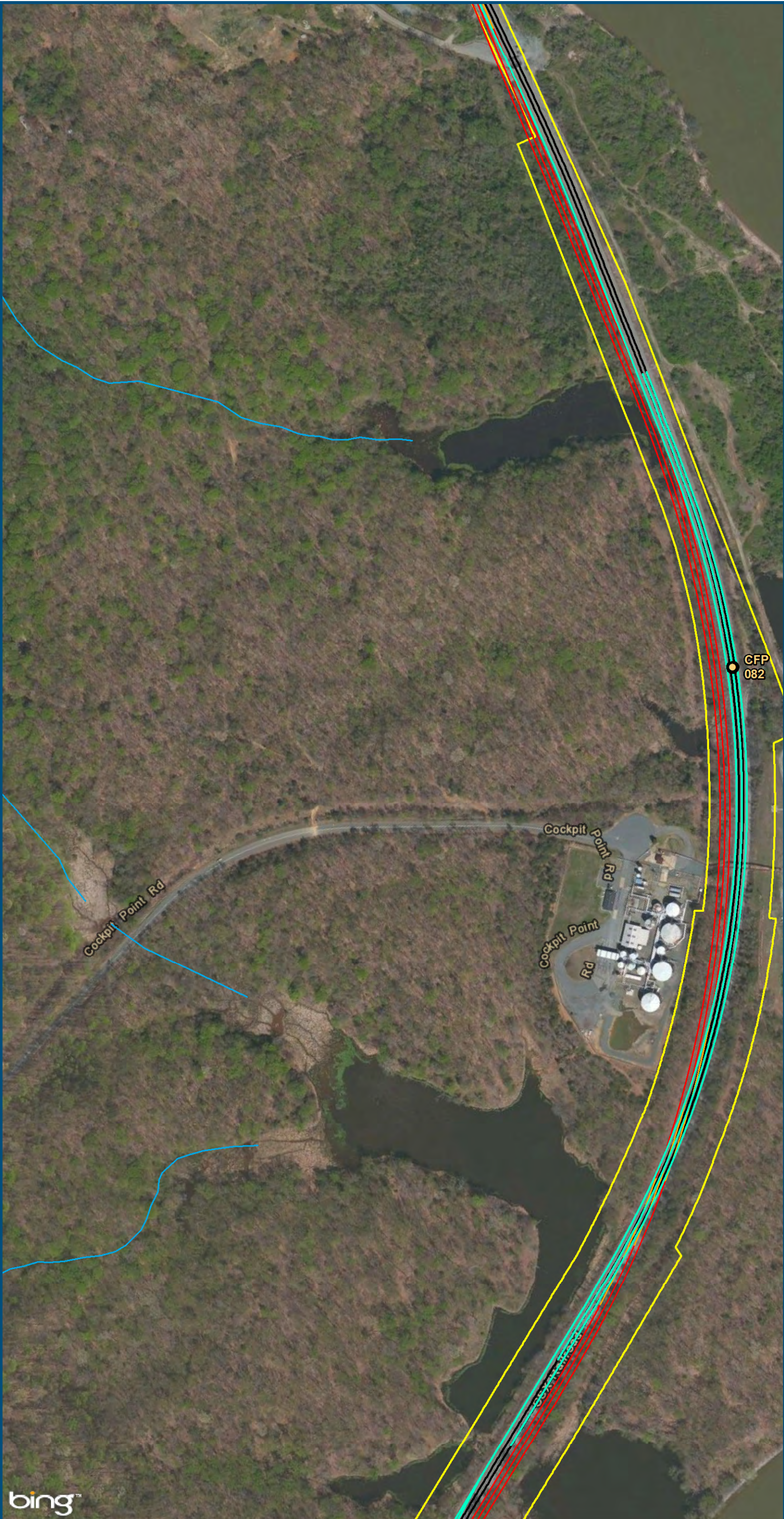
\\dlsmain\GIS_DATA\GIS\Projects\011545_VA Dept of Rail\Public Transportation\0239056_RAPS-4\AltDev-Concept\Eng\map_docs\mxd\Alt_Tech_Report\DC2RVA_Ch6_Appendices_NOV_HoldBridges_Alignments_11x17.mxd | Last Updated: 11.11.2015



- Legend**
- VRE Station
 - CSXT Mileposts
 - Third Track Under Construction by CSXT
 - Existing Track
 - New Track
 - Shifted Track
 - Existing Track
 - CSXT Right-of-Way
 - Streams

Figure H-33
Northern Virginia
Hold Bridges
Alignment Option

\\dlsmain\GIS_DATA\GIS\Projects\011545_VA Dept of Rails-Public\Transportation\0239056_RAPS-4\AltDev-Concept\Eng\map_docs\mxd\Alt_Tech_Report\DC2RVA_Ch6_Appendices_NOV_HoldBridges_Alignments_11x17.mxd | Last Updated: 11.11.2015



Legend

- CSXT Mileposts
- Third Track Under Construction by CSXT
- Existing Track
- New Track
- Shifted Track
- Existing Track
- CSXT Right-of-Way
- Streams

Figure H-34
Northern Virginia
Hold Bridges
Alignment Option



U.S. Department of Transportation
Federal Railroad Administration

www.DC2RVArail.com

