

MSSO FREIGHT OVERVIEW



THESE PLANS ARE UNFINISHED AND UNAPPROVED AND ARE NOT TO BE USED FOR ANY TYPE OF CONSTRUCTION OR THE ACQUISITION OF RIGHT OF WAY.

LEGEND	
DC2RVA TRACK	<div></div>
DC2RVA SHIFTED TRACK	<div></div>
DC2RVA STATION PLATFORM	<div></div>
R2R TRACK	<div></div>
MAINLINE RELOCATION TRACK	<div></div>
RETIRED TRACK	<div></div>
EXISTING TRACK	<div></div>
EXISTING RW	<div></div>

Revisions		
No.	Description	Date

DESIGNED BY	<div><div>DRPT</div><div>Virginia Department of Rail and Public Transportation</div></div>		
DRAWN BY	Virginia Department of Rail and Public Transportation		
CHECKED BY	Washington D.C. to Richmond Southeast High Speed Rail		
DATE	RIC Main Street Station Only With Freight Connector Bridge(MSSO Freight) Alignment Option Mapbook		
SCALE	As Shown	PROJECT NO.	DRAWING NO.
			DD
		SHEET NO.	1

Plotted by cpowell 11/13/2015 4:09:50 PM
MSSO_FC OVERVIEW.dgn

MSSO-FREIGHT-1A



THESE PLANS ARE UNFINISHED AND UNAPPROVED AND ARE NOT TO BE USED FOR ANY TYPE OF CONSTRUCTION OR THE ACQUISITION OF RIGHT OF WAY.

LEGEND	
DC2RVA TRACK	<div></div>
DC2RVA SHIFTED TRACK	<div></div>
DC2RVA STATION PLATFORM	<div></div>
R2R TRACK	<div></div>
MAINLINE RELOCATION TRACK	<div></div>
RETIRED TRACK	<div></div>
EXISTING TRACK	<div></div>
EXISTING R/W	<div></div>

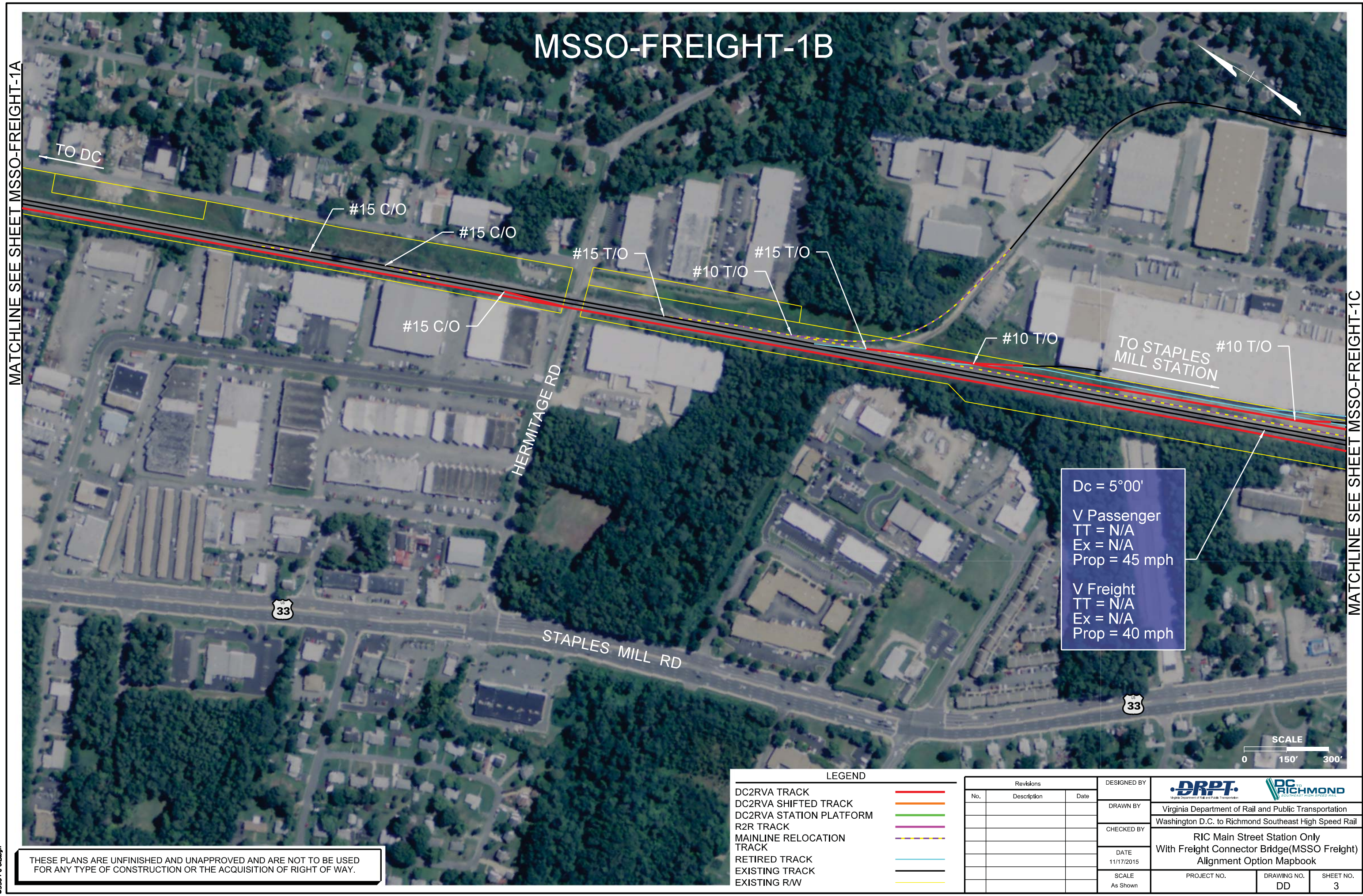
Revisions		
No.	Description	Date

DESIGNED BY
DRAWN BY
CHECKED BY
DATE 11/17/2015
SCALE As Shown

<div><div>DRPT</div><div>Virginia Department of Rail and Public Transportation</div></div> <div><div>RIC</div><div>Richmond</div><div>GOVERNMENT HIGH SPEED RAIL</div></div>		
DRAWN BY		
CHECKED BY		
DATE 11/17/2015		
SCALE As Shown		
Washington D.C. to Richmond Southeast High Speed Rail		
RIC Main Street Station Only With Freight Connector Bridge(MSSO Freight) Alignment Option Mapbook		
PROJECT NO.	DRAWING NO. DD	SHEET NO. 2

MATCHLINE SEE SHEET MSSO-FREIGHT-1A

MATCHLINE SEE SHEET MSSO-FREIGHT-1C



11/13/2015 4:04:2 PM
Plotted by cpowell
MSSO-FC-01B.dgn

THESE PLANS ARE UNFINISHED AND UNAPPROVED AND ARE NOT TO BE USED FOR ANY TYPE OF CONSTRUCTION OR THE ACQUISITION OF RIGHT OF WAY.

LEGEND

DC2RVA TRACK

DC2RVA SHIFTED TRACK

DC2RVA STATION PLATFORM

R2R TRACK

MAINLINE RELOCATION TRACK

RETIRED TRACK

EXISTING TRACK

EXISTING R/W

Revisions

No.	Description	Date

DESIGNED BY

DRAWN BY

CHECKED BY

DATE
11/17/2015

SCALE
As Shown

DRPT

Virginia Department of Rail and Public Transportation

RIC

Richmond

GOVERNMENT HIGH SPEED RAIL

Virginia Department of Rail and Public Transportation

Washington D.C. to Richmond Southeast High Speed Rail

RIC Main Street Station Only

With Freight Connector Bridge(MSSO Freight)

Alignment Option Mapbook

PROJECT NO.

DRAWING NO.
DD

SHEET NO.
3

MSSO-FREIGHT-1C

MATCHLINE SEE SHEET MSSO-FREIGHT-1B



MATCHLINE SEE SHEET MSSO-FREIGHT-1D

THESE PLANS ARE UNFINISHED AND UNAPPROVED AND ARE NOT TO BE USED FOR ANY TYPE OF CONSTRUCTION OR THE ACQUISITION OF RIGHT OF WAY.

LEGEND

DC2RVA TRACK	
DC2RVA SHIFTED TRACK	
DC2RVA STATION PLATFORM	
R2R TRACK	
MAINLINE RELOCATION TRACK	
RETIRED TRACK	
EXISTING TRACK	
EXISTING R/W	

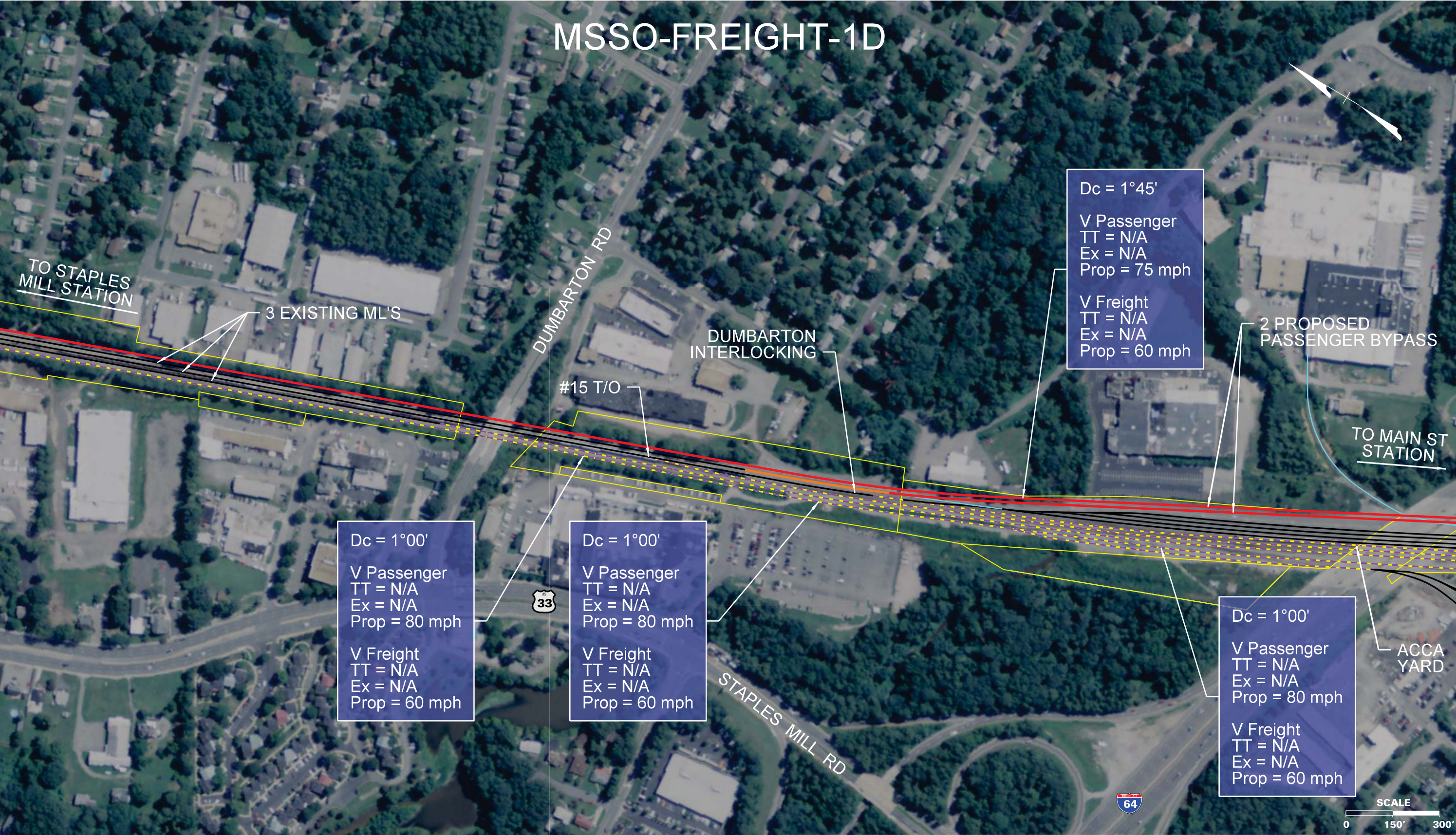
Revisions		
No.	Description	Date

DESIGNED BY	DRPT Virginia Department of Rail and Public Transportation		
DRAWN BY	Washington D.C. to Richmond Southeast High Speed Rail		
CHECKED BY	RIC Main Street Station Only With Freight Connector Bridge(MSSO Freight) Alignment Option Mapbook		
DATE	11/17/2015	PROJECT NO.	DRAWING NO.
SCALE	As Shown	DD	SHEET NO.
			4

MSSO-FREIGHT-1D

MATCHLINE SEE SHEET MSSO-FREIGHT-1C

MATCHLINE SEE SHEET MSSO-FREIGHT-1E



THESE PLANS ARE UNFINISHED AND UNAPPROVED AND ARE NOT TO BE USED FOR ANY TYPE OF CONSTRUCTION OR THE ACQUISITION OF RIGHT OF WAY.

Revisions			DESIGNED BY		
No.	Description	Date	DRAWN BY		
			CHECKED BY		
			DATE		
			SCALE		
			As Shown		

DRPT Virginia Department of Rail and Public Transportation		
RICHMOND Richmond Southeast High Speed Rail		
Washington D.C. to Richmond Southeast High Speed Rail		
RIC Main Street Station Only With Freight Connector Bridge(MSSO Freight) Alignment Option Mapbook		
PROJECT NO.	DRAWING NO.	SHEET NO.
	DD	5

MSSO-FREIGHT-1E

Dc = 1°00'
V Passenger
TT = N/A
Ex = N/A
Prop = 80 mph

V Freight
TT = N/A
Ex = N/A
Prop = 60 mph

Dc = 1°00'
V Passenger
TT = N/A
Ex = N/A
Prop = 80 mph

V Freight
TT = N/A
Ex = N/A
Prop = 60 mph

Dc = 3°00'
V Passenger
TT = N/A
Ex = N/A
Prop = 60 mph

V Freight
TT = N/A
Ex = N/A
Prop = 55 mph

Dc = 1°00'
V Passenger
TT = N/A
Ex = N/A
Prop = 80 mph

V Freight
TT = N/A
Ex = N/A
Prop = 60 mph

2 PROPOSED PASSENGER BYPASS

CSX BIDS / TRANSLOAD FACILITY

TO MAIN ST STATION

ACCA YARD

BRYAN PARK MAINTENANCE FACILITY

MATCHLINE SEE SHEET MSSO-FREIGHT-1D

MATCHLINE SEE SHEET MSSO-FREIGHT-1F

TO STAPLES MILL STATION



LEGEND

DC2RVA TRACK	Red line
DC2RVA SHIFTED TRACK	Orange line
DC2RVA STATION PLATFORM	Green line
R2R TRACK	Purple line
MAINLINE RELOCATION TRACK	Yellow dashed line
RETIRED TRACK	Blue line
EXISTING TRACK	Black line
EXISTING R/W	Yellow line

Revisions			DESIGNED BY
No.	Description	Date	

DRAWN BY	DRPT Virginia Department of Rail and Public Transportation		
CHECKED BY	Washington D.C. to Richmond Southeast High Speed Rail		
DATE	11/17/2015		
SCALE	As Shown		

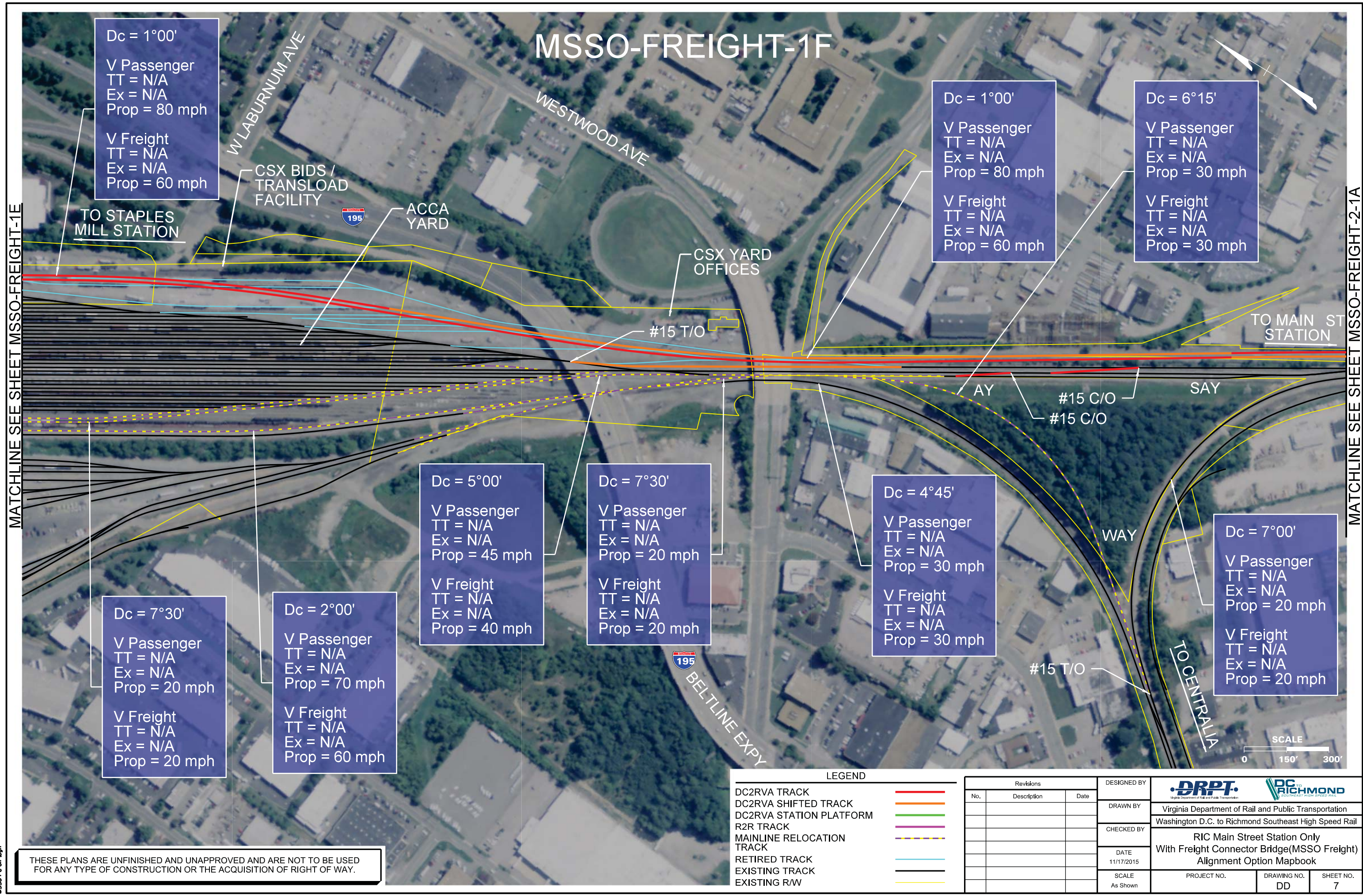
RIC Main Street Station Only With Freight Connector Bridge(MSSO Freight) Alignment Option Mapbook		
PROJECT NO.	DRAWING NO. DD	SHEET NO. 6

THESE PLANS ARE UNFINISHED AND UNAPPROVED AND ARE NOT TO BE USED FOR ANY TYPE OF CONSTRUCTION OR THE ACQUISITION OF RIGHT OF WAY.

11/13/2015 4:03:31 PM
Plotted by cpowell
MSSO-FC-01E.dgn

MATCHLINE SEE SHEET MSSO-FREIGHT-1E

MATCHLINE SEE SHEET MSSO-FREIGHT-2-1A



THESE PLANS ARE UNFINISHED AND UNAPPROVED AND ARE NOT TO BE USED FOR ANY TYPE OF CONSTRUCTION OR THE ACQUISITION OF RIGHT OF WAY.

11/13/2015 4:03:37 PM
Plotted by cpowell
MSSO-FC-01F.dgn

Revisions			DESIGNED BY		
No.	Description	Date	DRAWN BY		
			CHECKED BY		
			DATE		
			SCALE		

DRPT Virginia Department of Rail and Public Transportation		
Washington D.C. to Richmond Southeast High Speed Rail		
RIC Main Street Station Only With Freight Connector Bridge(MSSO Freight) Alignment Option Mapbook		
PROJECT NO.	DRAWING NO.	SHEET NO.
	DD	7

MSSO-FREIGHT-2-2A

MATCHLINE SEE SHEET MSSO-FREIGHT-1F

TO ACCA YARD

N BOULEVARD

#15 C/O

161

W LEIGH ST

HERMITAGE ROAD

OUT OF SERVICE
TRACK TO BE
REHABILITATED

MATCHLINE SEE SHEET MSSO-FREIGHT-2-2B

TO MAIN ST
STATION

Dc = 2°15'
V Passenger
TT = 40 mph
Ex = 40 mph
Prop = 40 mph
V Freight
TT = 25 mph
Ex = 30 mph
Prop = 30 mph



LEGEND	
DC2RVA TRACK	
DC2RVA SHIFTED TRACK	
DC2RVA STATION PLATFORM	
R2R TRACK	
MAINLINE RELOCATION TRACK	
RETIRED TRACK	
EXISTING TRACK	
EXISTING RW	

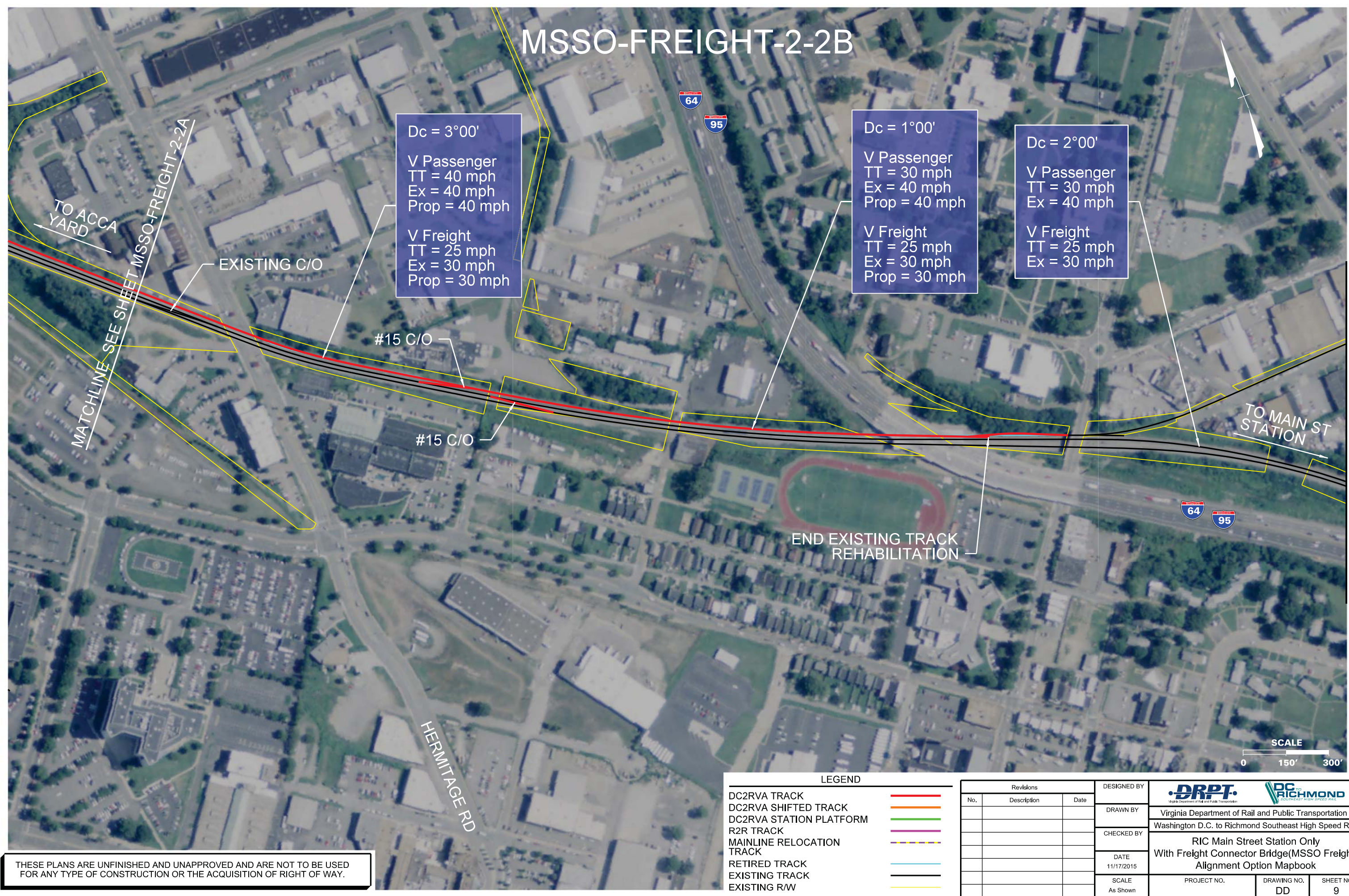
Revisions		
No.	Description	Date

DESIGNED BY
DRAWN BY
CHECKED BY
DATE 11/17/2015
SCALE As Shown

 Virginia Department of Rail and Public Transportation		
Washington D.C. to Richmond Southeast High Speed Rail		
RIC Main Street Station Only With Freight Connector Bridge(MSSO Freight) Alignment Option Mapbook		
PROJECT NO.	DRAWING NO. DD	SHEET NO. 8

THESE PLANS ARE UNFINISHED AND UNAPPROVED AND ARE NOT TO BE USED FOR ANY TYPE OF CONSTRUCTION OR THE ACQUISITION OF RIGHT OF WAY.

MSSO-FREIGHT-2-2B



Dc = 3°00'
V Passenger
TT = 40 mph
Ex = 40 mph
Prop = 40 mph

V Freight
TT = 25 mph
Ex = 30 mph
Prop = 30 mph

Dc = 1°00'
V Passenger
TT = 30 mph
Ex = 40 mph
Prop = 40 mph

V Freight
TT = 25 mph
Ex = 30 mph
Prop = 30 mph

Dc = 2°00'
V Passenger
TT = 30 mph
Ex = 40 mph



V Freight
TT = 25 mph
Ex = 30 mph

THESE PLANS ARE UNFINISHED AND UNAPPROVED AND ARE NOT TO BE USED FOR ANY TYPE OF CONSTRUCTION OR THE ACQUISITION OF RIGHT OF WAY.

LEGEND

- DC2RVA TRACK
- DC2RVA SHIFTED TRACK
- DC2RVA STATION PLATFORM
- R2R TRACK
- MAINLINE RELOCATION TRACK
- RETIRED TRACK
- EXISTING TRACK
- EXISTING RW

Revisions		
No.	Description	Date

DESIGNED BY	 		
DRAWN BY	Virginia Department of Rail and Public Transportation		
CHECKED BY	Washington D.C. to Richmond Southeast High Speed Rail		
DATE	RIC Main Street Station Only		
SCALE	With Freight Connector Bridge(MSSO Freight)		
As Shown	Alignment Option Mapbook		
PROJECT NO.	DRAWING NO.	SHEET NO.	
	DD	9	

MSSO-FREIGHT-2-2C

MATCHLINE SEE SHEET MSSO-FREIGHT-2-2B

CHAMBERLAYNE AVENUE

BROOK RD

TO ACCA YARD

TO MAIN ST
STATION

SCALE
0 150' 300'

Dc = 3°30'
V Passenger
TT = 30 mph
Ex = 55 mph
V Freight
TT = 25 mph
Ex = 45 mph

Dc = 6°00'
V Passenger
TT = 30 mph
Ex = 40 mph
V Freight
TT = 25 mph
Ex = 30 mph

Dc = 4°00'
V Passenger
TT = 30 mph
Ex = 50 mph
V Freight
TT = 25 mph
Ex = 45 mph

Dc = 4°00'
V Passenger
TT = 30 mph
Ex = 50 mph
V Freight
TT = 25 mph
Ex = 45 mph





MATCHLINE SEE SHEET MSSO-FREIGHT-2-2D

LEGEND

- DC2RVA TRACK
- DC2RVA SHIFTED TRACK
- DC2RVA STATION PLATFORM
- R2R TRACK
- MAINLINE RELOCATION TRACK
- RETIRED TRACK
- EXISTING TRACK
- EXISTING R/W

Revisions		
No.	Description	Date

DESIGNED BY
DRAWN BY
CHECKED BY
DATE 11/17/2015
SCALE As Shown



Virginia Department of Rail and Public Transportation

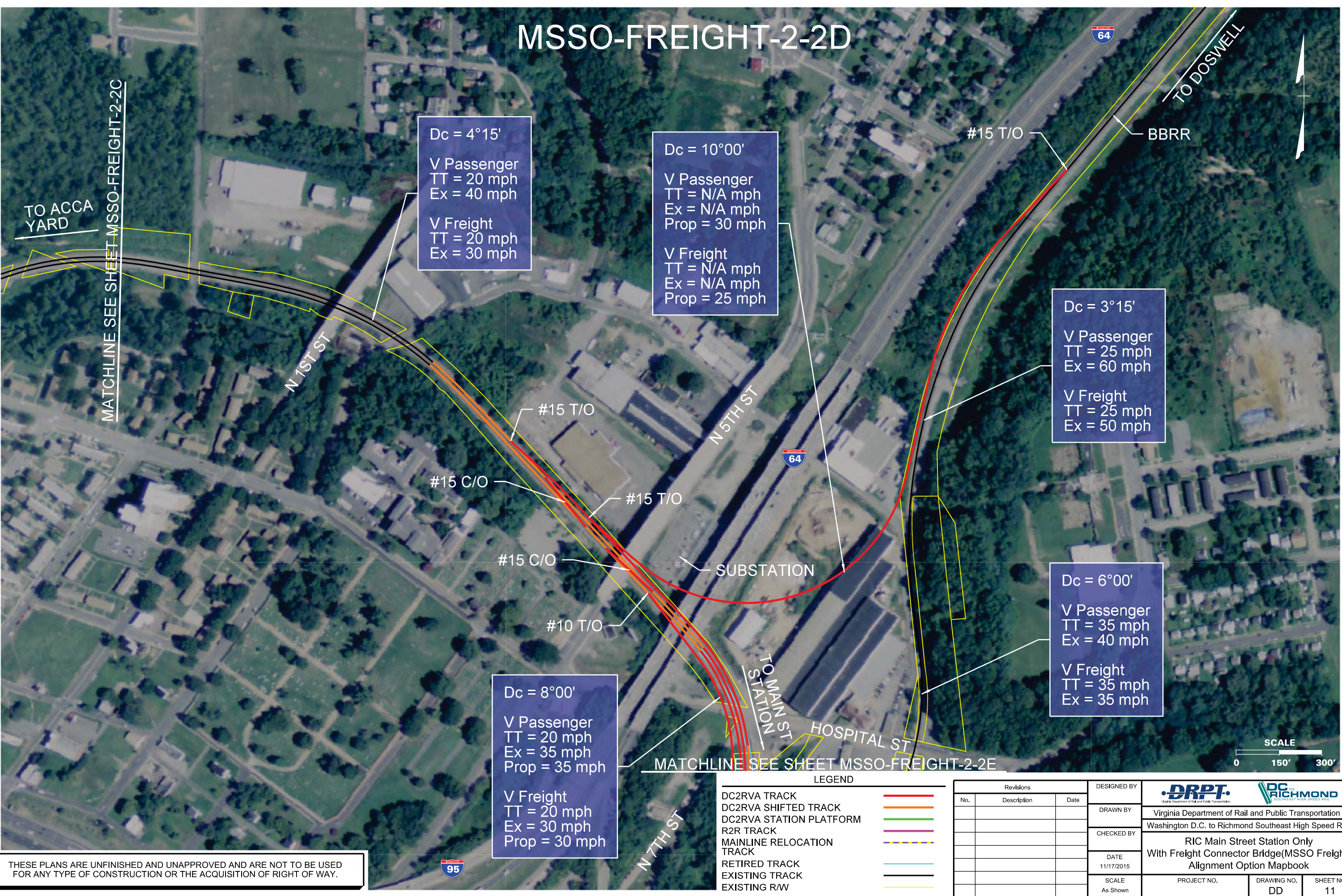
Washington D.C. to Richmond Southeast High Speed Rail

RIC Main Street Station Only
With Freight Connector Bridge(MSSO Freight)
Alignment Option Mapbook

PROJECT NO.	DRAWING NO. DD	SHEET NO. 10
-------------	-------------------	-----------------

THESE PLANS ARE UNFINISHED AND UNAPPROVED AND ARE NOT TO BE USED FOR ANY TYPE OF CONSTRUCTION OR THE ACQUISITION OF RIGHT OF WAY.

MSSO-FREIGHT-2-2D



THESE PLANS ARE UNFINISHED AND UNAPPROVED AND ARE NOT TO BE USED FOR ANY TYPE OF CONSTRUCTION OR THE ACQUISITION OF RIGHT OF WAY.

11/13/2015 4:05:59 PM
MSSO-FC-02-2D.dgn

Revisions			DESIGNED BY		
No.	Description	Date	DRAWN BY		
			CHECKED BY		
			DATE		
			SCALE		
			As Shown		

DRPT			RICHMOND		
Virginia Department of Rail and Public Transportation			Washington D.C. to Richmond Southeast High Speed Rail		
RIC Main Street Station Only			With Freight Connector Bridge(MSSO Freight)		
Alignment Option Mapbook			PROJECT NO.		
			DRAWING NO.		
			DD		
			SHEET NO.		
			11		

MSSO-FREIGHT-2-2E

Dc = 5°00'
V Passenger
TT = N/A
Ex = N/A
Prop = 45 mph

V Freight
TT = N/A
Ex = N/A
Prop = 40 mph

Dc = 5°00'
V Passenger
TT = N/A
Ex = N/A
Prop = 45 mph

V Freight
TT = N/A
Ex = N/A
Prop = 40 mph

Dc = 5°30'
V Passenger
TT = 15 mph
Ex = 45 mph
Prop = 45 mph

V Freight
TT = 15 mph
Ex = 40 mph
Prop = 40 mph

OLIVER HILL WAY

SHOCKOE CREEK
DRAINAGE STRUCTURE

BROWN ST

TO MAIN ST
STATION

E BROAD ST

MAINTENANCE FACILITY
THREE TRACKS CLEAR LENGTHS:
975TF, 1275TF & 1475TF

Dc = 2°45'
V Passenger
TT = 20 mph
Ex = N/A
Prop = 65 mph

V Freight
TT = 20 mph
Ex = N/A
Prop = 55 mph

Dc = 7°45'
V Passenger
TT = 10 mph
Ex = 35 mph
Prop = 35 mph

V Freight
TT = 10 mph
Ex = 30 mph
Prop = 30 mph

1. EXISTING BBRR MAINLINE FROM MAIN STREET STATION WILL BE FREIGHT TRAFFIC ONLY TO THE BBRR WITH NO INTER OPERABILITY WITH THE BELLWOOD SUB.
2. PROPOSED BBRR MAINLINE FROM MAIN STREET STATION WILL BE FREIGHT/PASSENGER WITH INTER OPERABILITY WITH THE BELLWOOD SUB.

THESE PLANS ARE UNFINISHED AND UNAPPROVED AND ARE NOT TO BE USED FOR ANY TYPE OF CONSTRUCTION OR THE ACQUISITION OF RIGHT OF WAY.

LEGEND

DC2RVA TRACK	
DC2RVA SHIFTED TRACK	
DC2RVA STATION PLATFORM	
R2R TRACK	
MAINLINE RELOCATION TRACK	
RETIRED TRACK	
EXISTING TRACK	
EXISTING R/W	

Revisions		
No.	Description	Date

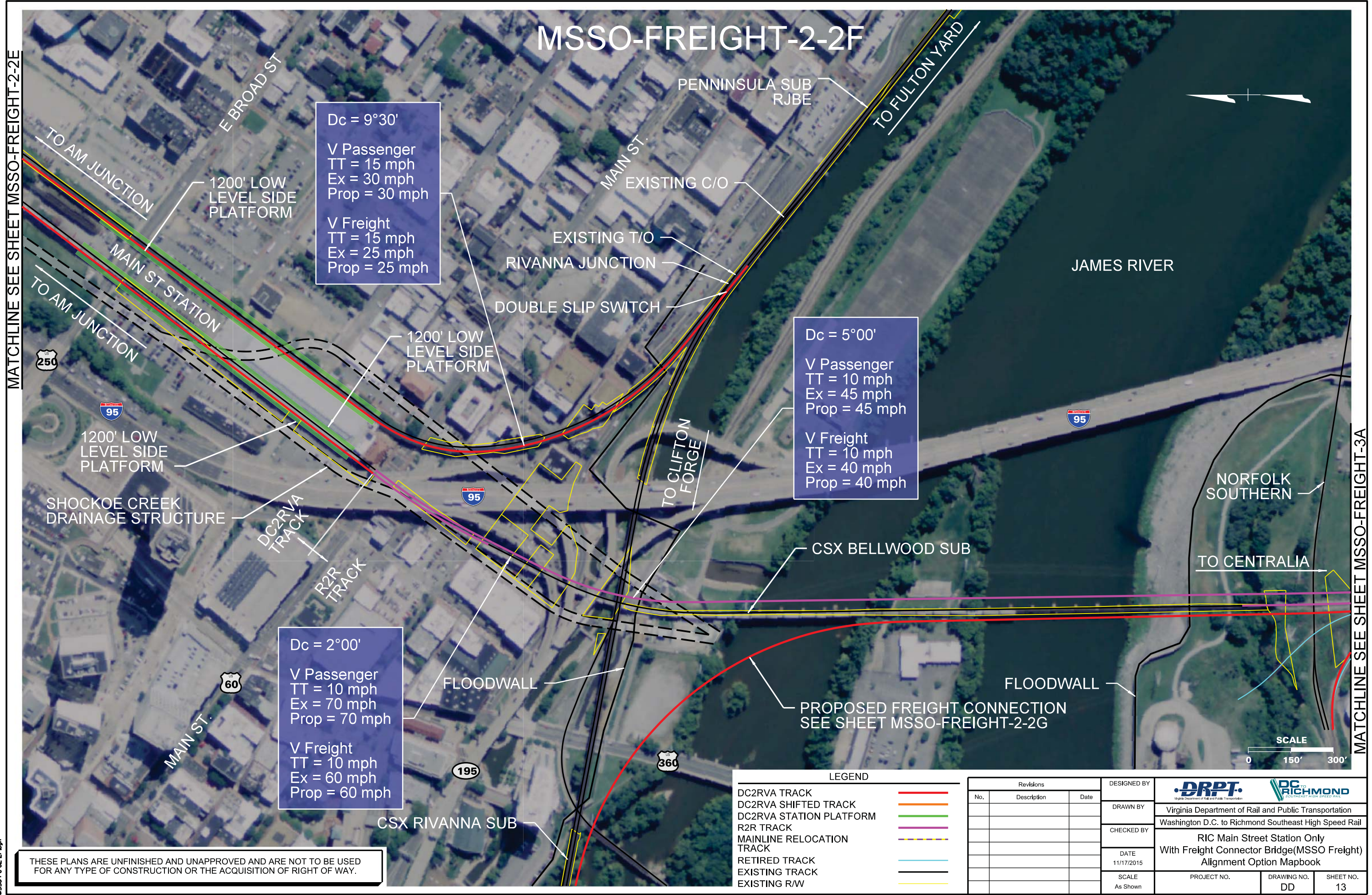
DESIGNED BY	 Virginia Department of Rail and Public Transportation		
DRAWN BY	Washington D.C. to Richmond Southeast High Speed Rail		
CHECKED BY	RIC Main Street Station Only With Freight Connector Bridge(MSSO Freight) Alignment Option Mapbook		
DATE	11/17/2015	PROJECT NO.	DRAWING NO.
SCALE	As Shown	DD	SHEET NO.
			12

MATCHLINE SEE SHEET MSSO-FREIGHT-2-2D

MATCHLINE SEE SHEET MSSO-FREIGHT-2-2F

MATCHLINE SEE SHEET MSSO-FREIGHT-2-2E

11/13/2015 4:40:03 PM
MSSO-FC-02-2F.dgn



MSSO-FREIGHT-2-2F

Dc = 9°30'
V Passenger
TT = 15 mph
Ex = 30 mph
Prop = 30 mph
V Freight
TT = 15 mph
Ex = 25 mph
Prop = 25 mph

Dc = 5°00'
V Passenger
TT = 10 mph
Ex = 45 mph
Prop = 45 mph
V Freight
TT = 10 mph
Ex = 40 mph
Prop = 40 mph

Dc = 2°00'
V Passenger
TT = 10 mph
Ex = 70 mph
Prop = 70 mph
V Freight
TT = 10 mph
Ex = 60 mph
Prop = 60 mph

LEGEND	
DC2RVA TRACK	
DC2RVA SHIFTED TRACK	
DC2RVA STATION PLATFORM	
R2R TRACK	
MAINLINE RELOCATION TRACK	
RETIRED TRACK	
EXISTING TRACK	
EXISTING R/W	

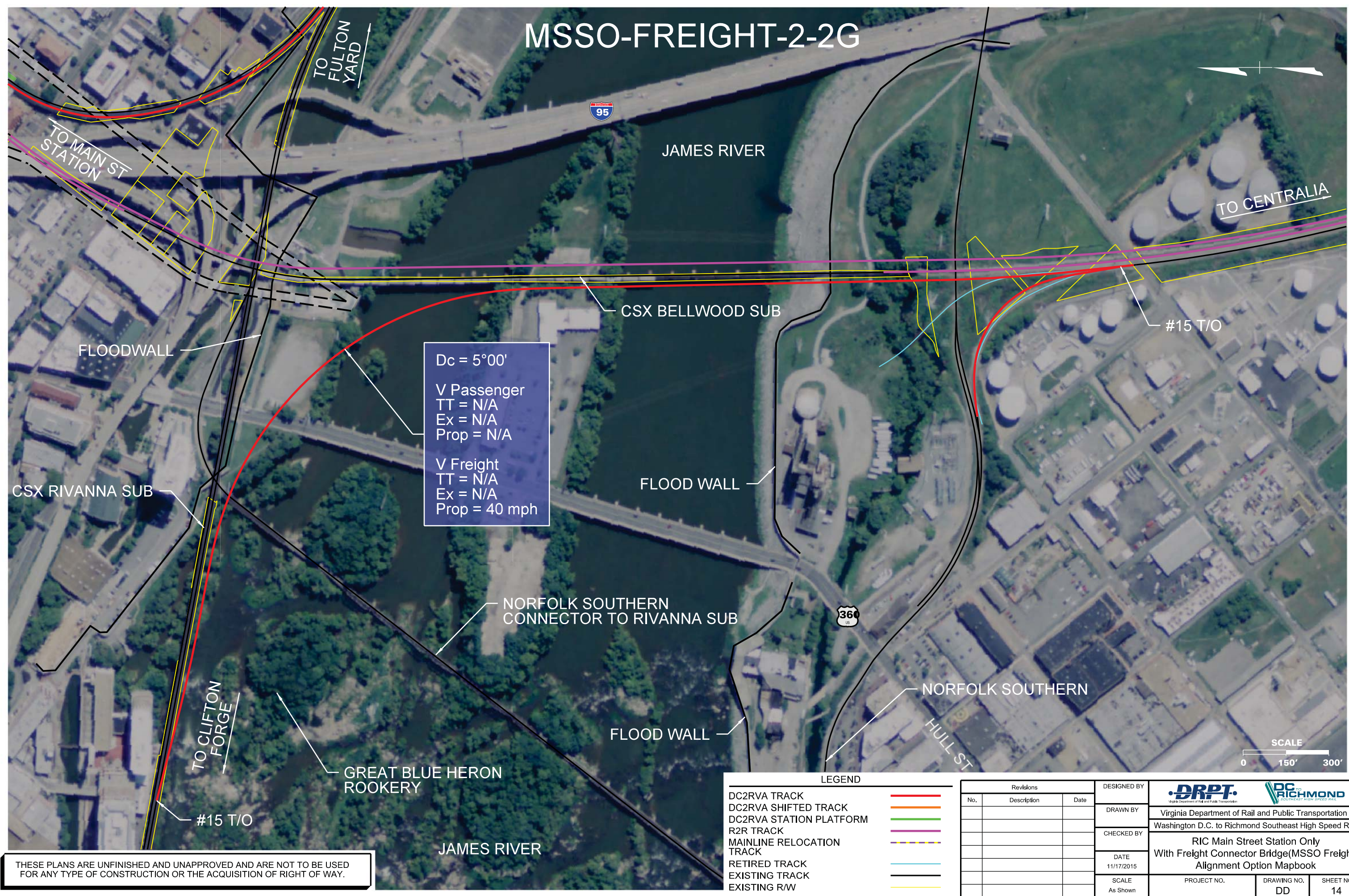
Revisions		
No.	Description	Date

DESIGNED BY	DRPT Virginia Department of Rail and Public Transportation		
DRAWN BY	Virginia Department of Rail and Public Transportation		
CHECKED BY	Washington D.C. to Richmond Southeast High Speed Rail		
DATE	11/17/2015		
SCALE	As Shown		
PROJECT NO.	DRAWING NO.	SHEET NO.	
	DD	13	

THESE PLANS ARE UNFINISHED AND UNAPPROVED AND ARE NOT TO BE USED FOR ANY TYPE OF CONSTRUCTION OR THE ACQUISITION OF RIGHT OF WAY.

MATCHLINE SEE SHEET MSSO-FREIGHT-3A

MSSO-FREIGHT-2-2G



Dc = 5°00'
V Passenger
TT = N/A
Ex = N/A
Prop = N/A

V Freight
TT = N/A
Ex = N/A
Prop = 40 mph

LEGEND		
DC2RVA TRACK		
DC2RVA SHIFTED TRACK		
DC2RVA STATION PLATFORM		
R2R TRACK		
MAINLINE RELOCATION TRACK		
RETIRED TRACK		
EXISTING TRACK		
EXISTING R/W		

Revisions		
No.	Description	Date

DESIGNED BY
DRAWN BY
CHECKED BY
DATE 11/17/2015
SCALE As Shown

DRPT Virginia Department of Rail and Public Transportation		
DRAWN BY		
CHECKED BY		
DATE 11/17/2015		
SCALE As Shown		
Washington D.C. to Richmond Southeast High Speed Rail		
RIC Main Street Station Only With Freight Connector Bridge(MSSO Freight) Alignment Option Mapbook		
PROJECT NO.	DRAWING NO. DD	SHEET NO. 14

THESE PLANS ARE UNFINISHED AND UNAPPROVED AND ARE NOT TO BE USED FOR ANY TYPE OF CONSTRUCTION OR THE ACQUISITION OF RIGHT OF WAY.

Plotted by cpowell 11/13/2015 4:14:4 PM
MSSO-FC-02-2G.dgn

MSSO-FREIGHT-3A

JAMES RIVER

95

2 - R2R TRACKS
(1 EXIST AND 1 PROP)

#20 C/O

#20 C/O

#10 T/O

TO CENTRALIA

MATCHLINE SEE SHEET MSSO-FREIGHT-3B

NORFOLK
SOUTHERN

MATCHLINE SEE MSSO-FREIGHT-2-1F

TO MAIN ST STATION

PROPOSED FREIGHT CONNECTION
SEE SHEET MSSO-FREIGHT-2-2G

E. 4TH ST.

MAURY ST.

SCALE

0 150' 300'

LEGEND

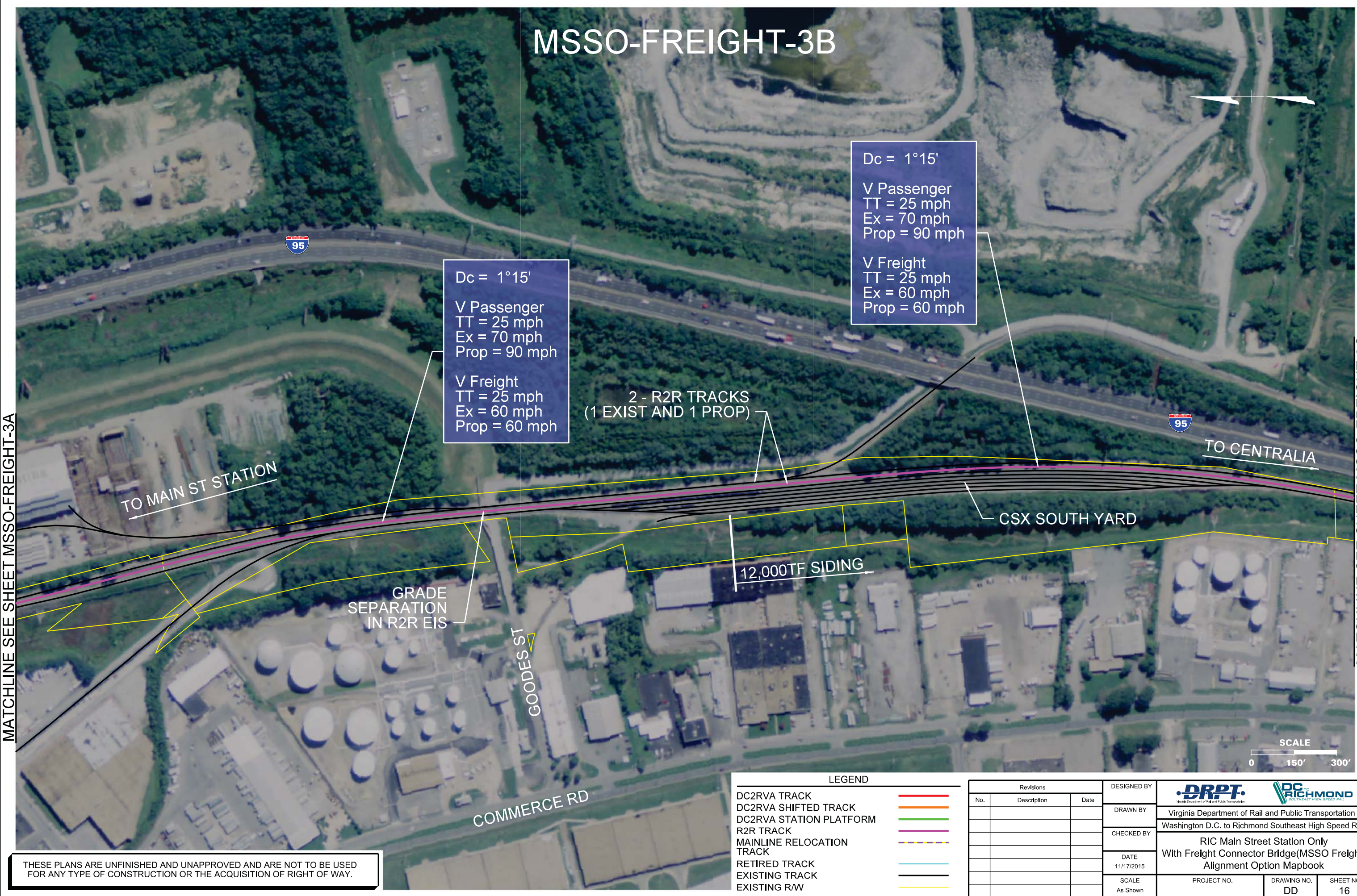
DC2RVA TRACK	
DC2RVA SHIFTED TRACK	
DC2RVA STATION PLATFORM	
R2R TRACK	
MAINLINE RELOCATION TRACK	
RETIRED TRACK	
EXISTING TRACK	
EXISTING R/W	

Revisions		
No.	Description	Date

DESIGNED BY	 Virginia Department of Rail and Public Transportation		
DRAWN BY	Washington D.C. to Richmond Southeast High Speed Rail		
CHECKED BY	RIC Main Street Station Only With Freight Connector Bridge(MSSO Freight) Alignment Option Mapbook		
DATE	11/17/2015	PROJECT NO.	DRAWING NO.
SCALE	As Shown	DD	SHEET NO.
			15

THESE PLANS ARE UNFINISHED AND UNAPPROVED AND ARE NOT TO BE USED FOR ANY TYPE OF CONSTRUCTION OR THE ACQUISITION OF RIGHT OF WAY.

MSSO-FREIGHT-3B



Dc = 1°15'

V Passenger
TT = 25 mph
Ex = 70 mph
Prop = 90 mph

V Freight
TT = 25 mph
Ex = 60 mph
Prop = 60 mph

Dc = 1°15'

V Passenger
TT = 25 mph
Ex = 70 mph
Prop = 90 mph

V Freight
TT = 25 mph
Ex = 60 mph
Prop = 60 mph

2 - R2R TRACKS
(1 EXIST AND 1 PROP)

TO MAIN ST STATION

TO CENTRALIA

CSX SOUTH YARD

12,000TF SIDING

GRADE
SEPARATION
IN R2R EIS

GOODES ST

COMMERCE RD

SCALE
0 150' 300'

MATCHLINE SEE SHEET MSSO-FREIGHT-3A



MATCHLINE SEE SHEET MSSO-FREIGHT-3C

THESE PLANS ARE UNFINISHED AND UNAPPROVED AND ARE NOT TO BE USED FOR ANY TYPE OF CONSTRUCTION OR THE ACQUISITION OF RIGHT OF WAY.

LEGEND

- DC2RVA TRACK
- DC2RVA SHIFTED TRACK
- DC2RVA STATION PLATFORM
- R2R TRACK
- MAINLINE RELOCATION TRACK
- RETIRED TRACK
- EXISTING TRACK
- EXISTING R/W

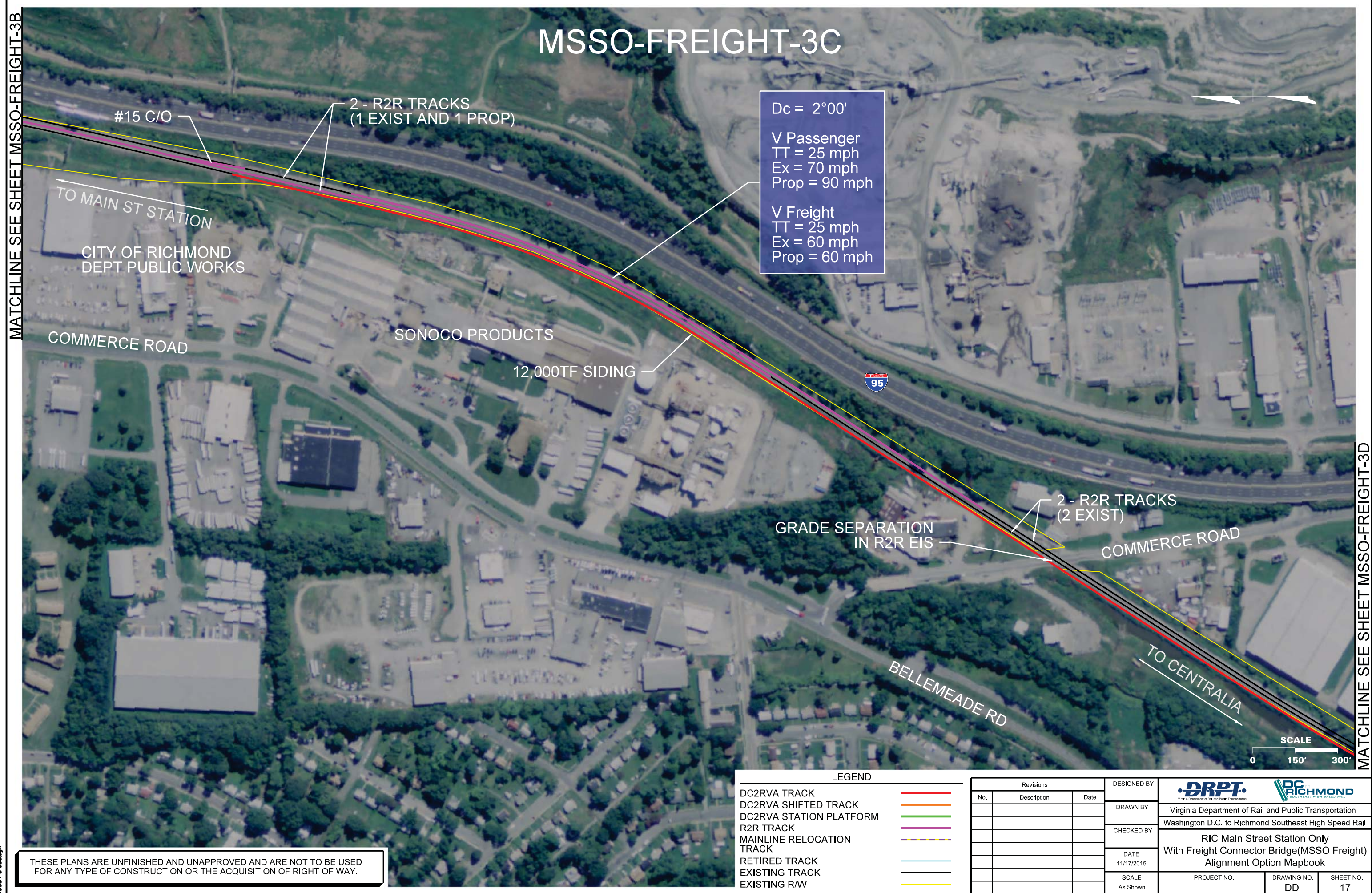
Revisions		
No.	Description	Date

DESIGNED BY	 		
DRAWN BY	Virginia Department of Rail and Public Transportation		
CHECKED BY	Washington D.C. to Richmond Southeast High Speed Rail		
DATE	RIC Main Street Station Only With Freight Connector Bridge(MSSO Freight) Alignment Option Mapbook		
SCALE	As Shown	PROJECT NO.	DRAWING NO. DD
			SHEET NO. 16

MATCHLINE SEE SHEET MSSO-FREIGHT-3B

MATCHLINE SEE SHEET MSSO-FREIGHT-3D

11/13/2015 4:11:28 PM
MSSO-FC-03C.dgn



Revisions		
No.	Description	Date

DESIGNED BY			
DRAWN BY	Virginia Department of Rail and Public Transportation		
CHECKED BY	Washington D.C. to Richmond Southeast High Speed Rail		
DATE	RIC Main Street Station Only		
SCALE	With Freight Connector Bridge(MSSO Freight)		
	Alignment Option Mapbook		
PROJECT NO.	DRAWING NO.	SHEET NO.	
	DD	17	

MSSO-FREIGHT-3D

MATCHLINE SEE SHEET MSSO-FREIGHT-3C

MATCHLINE SEE SHEET MSSO-FREIGHT-3E




Dc = 1°00'

V Passenger
TT = 25 mph
Ex = 85 mph
Prop = 90 mph

V Freight
TT = 25 mph
Ex = 60 mph
Prop = 60 mph

LEGEND		
DC2RVA TRACK		
DC2RVA SHIFTED TRACK		
DC2RVA STATION PLATFORM		
R2R TRACK		
MAINLINE RELOCATION TRACK		
RETIRED TRACK		
EXISTING TRACK		
EXISTING R/W		

Revisions		
No.	Description	Date

DESIGNED BY	 Virginia Department of Rail and Public Transportation		
DRAWN BY	Washington D.C. to Richmond Southeast High Speed Rail		
CHECKED BY	RIC Main Street Station Only With Freight Connector Bridge(MSSO Freight) Alignment Option Mapbook		
DATE	11/17/2015	PROJECT NO.	DRAWING NO.
SCALE	As Shown	DD	SHEET NO.
			18

THESE PLANS ARE UNFINISHED AND UNAPPROVED AND ARE NOT TO BE USED FOR ANY TYPE OF CONSTRUCTION OR THE ACQUISITION OF RIGHT OF WAY.

MSSO-FREIGHT-3E

PHILLIP MORRIS USA

161

TO MAIN ST STATION

TO CENTRALIA

#20 C/O

#20 C/O

BELLS RD

GRADE SEPARATION
IN R2R EIS

2 - R2R TRACKS
(2 EXIST)

DALE AVE



MATCHLINE SEE SHEET MSSO-FREIGHT-3D

MATCHLINE SEE SHEET MSSO-FREIGHT-3F

LEGEND	
DC2RVA TRACK	
DC2RVA SHIFTED TRACK	
DC2RVA STATION PLATFORM	
R2R TRACK	
MAINLINE RELOCATION TRACK	
RETIRED TRACK	
EXISTING TRACK	
EXISTING R/W	

Revisions		
No.	Description	Date

DESIGNED BY
DRAWN BY
CHECKED BY
DATE 11/17/2015
SCALE As Shown

Virginia Department of Rail and Public Transportation
Washington D.C. to Richmond Southeast High Speed Rail

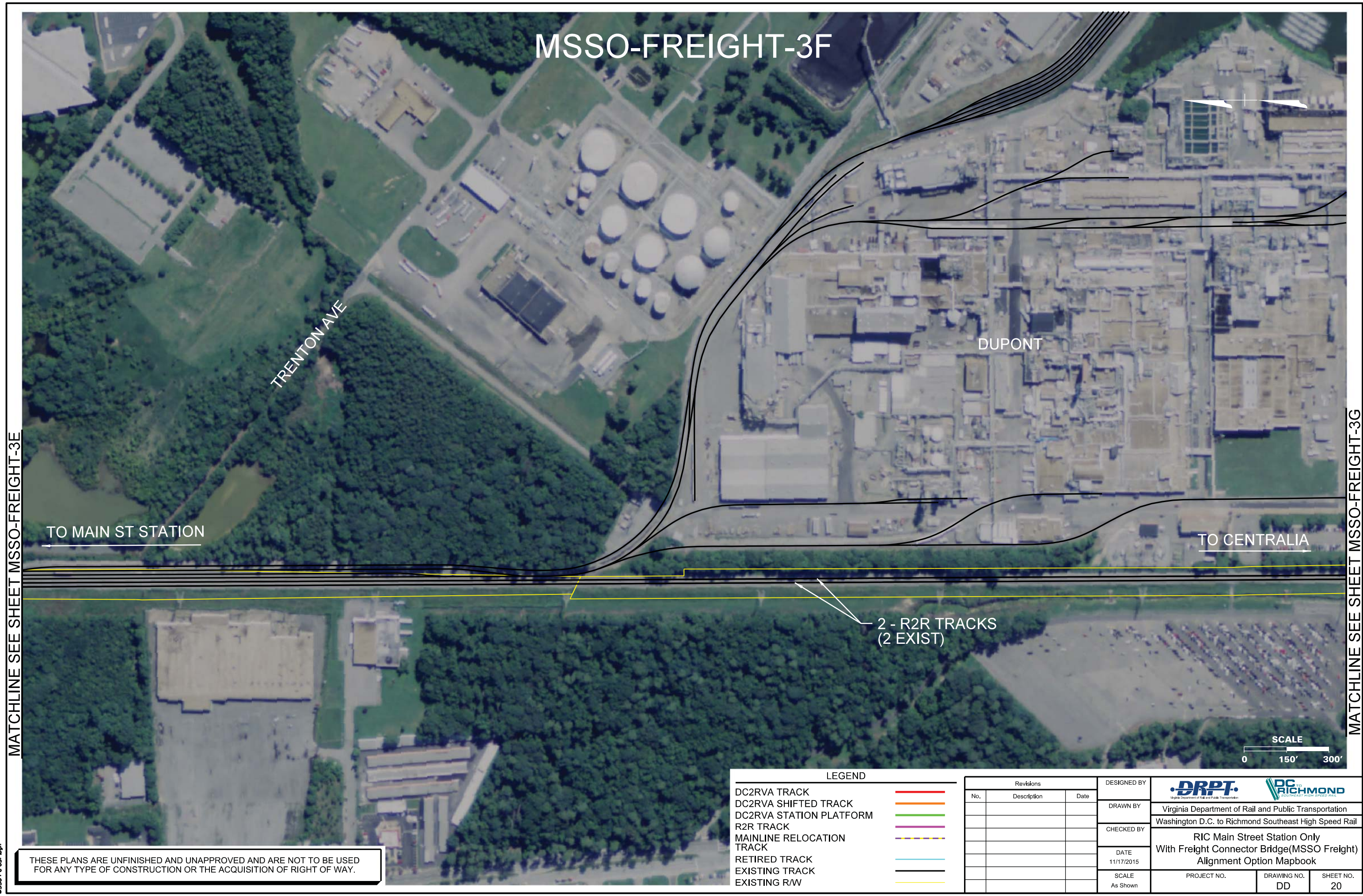
RIC Main Street Station Only
With Freight Connector Bridge(MSSO Freight)
Alignment Option Mapbook

PROJECT NO.	DRAWING NO. DD	SHEET NO. 19
-------------	-------------------	-----------------

THESE PLANS ARE UNFINISHED AND UNAPPROVED AND ARE NOT TO BE USED FOR ANY TYPE OF CONSTRUCTION OR THE ACQUISITION OF RIGHT OF WAY.

MATCHLINE SEE SHEET MSSO-FREIGHT-3E

MATCHLINE SEE SHEET MSSO-FREIGHT-3G



MSSO-FREIGHT-3F

TRENTON AVE

DUPONT

TO MAIN ST STATION

TO CENTRALIA

2 - R2R TRACKS
(2 EXIST)



THESE PLANS ARE UNFINISHED AND UNAPPROVED AND ARE NOT TO BE USED FOR ANY TYPE OF CONSTRUCTION OR THE ACQUISITION OF RIGHT OF WAY.

LEGEND

DC2RVA TRACK

DC2RVA SHIFTED TRACK

DC2RVA STATION PLATFORM

R2R TRACK

MAINLINE RELOCATION TRACK

RETIRED TRACK

EXISTING TRACK

EXISTING R/W

Revisions

No.	Description	Date

DESIGNED BY

DRAWN BY

CHECKED BY

DATE
11/17/2015

SCALE
As Shown

DRPT

Virginia Department of Rail and Public Transportation

DRPT

Richmond

GOVERNMENT HIGH SPEED RAIL

Virginia Department of Rail and Public Transportation

Washington D.C. to Richmond Southeast High Speed Rail

RIC Main Street Station Only

With Freight Connector Bridge(MSSO Freight)

Alignment Option Mapbook

PROJECT NO.

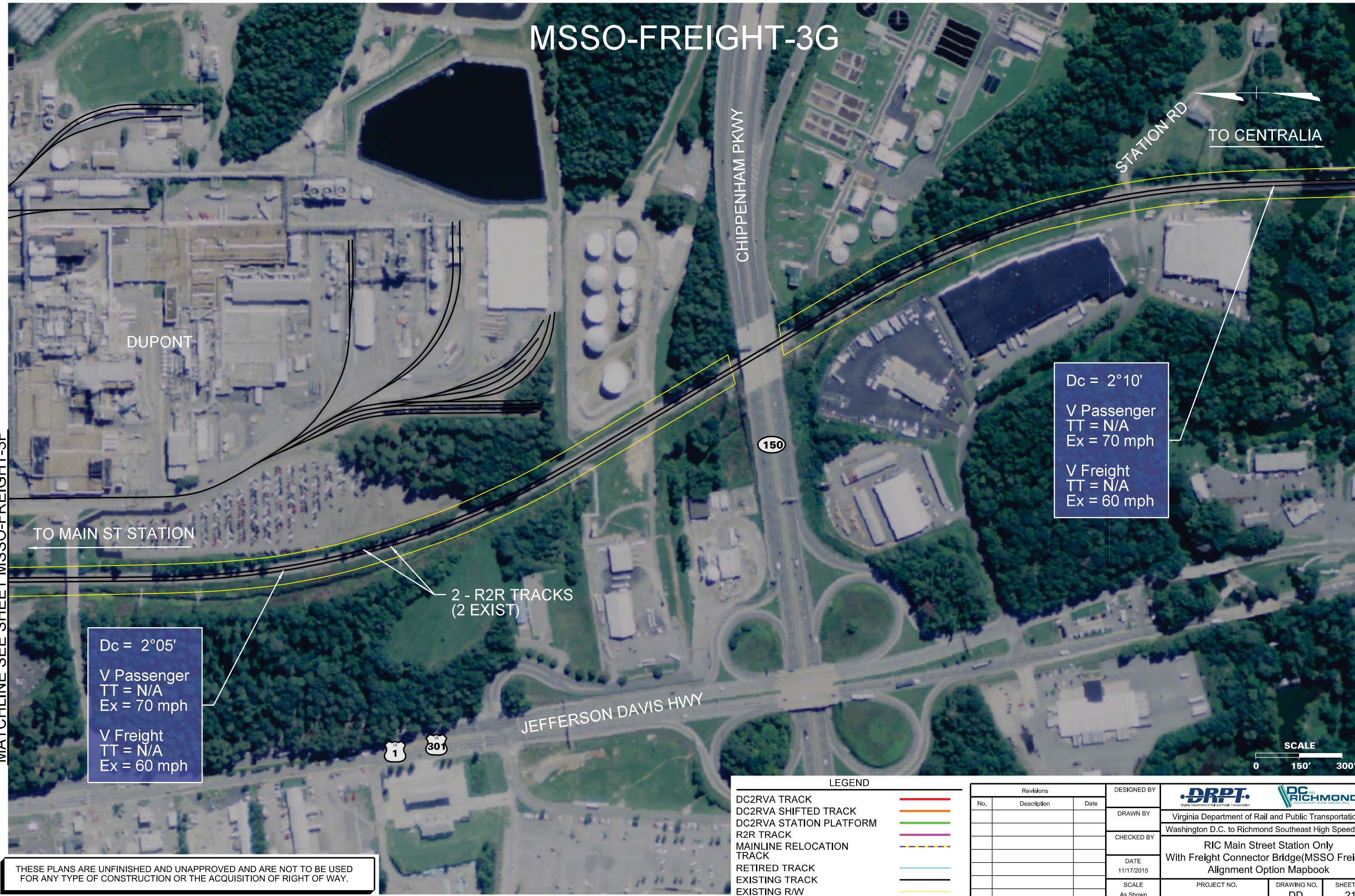
DRAWING NO.
DD

SHEET NO.
20

MSSO-FREIGHT-3G

MATCHLINE SEE SHEET MSSO-FREIGHT-3F

MATCHLINE SEE SHEET MSSO-FREIGHT-3H



Dc = 2°05'
V Passenger
TT = N/A
Ex = 70 mph

V Freight
TT = N/A
Ex = 60 mph

Dc = 2°10'
V Passenger
TT = N/A
Ex = 70 mph

V Freight
TT = N/A
Ex = 60 mph

2 - R2R TRACKS
(2 EXIST)

JEFFERSON DAVIS HWY

CHIPPENHAM PKWY

STATION RD

TO CENTRALIA

TO MAIN ST STATION



LEGEND

DC2RVA TRACK	
DC2RVA SHIFTED TRACK	
DC2RVA STATION PLATFORM	
R2R TRACK	
MAINLINE RELOCATION TRACK	
RETIRED TRACK	
EXISTING TRACK	
EXISTING R/W	

Revisions		
No.	Description	Date

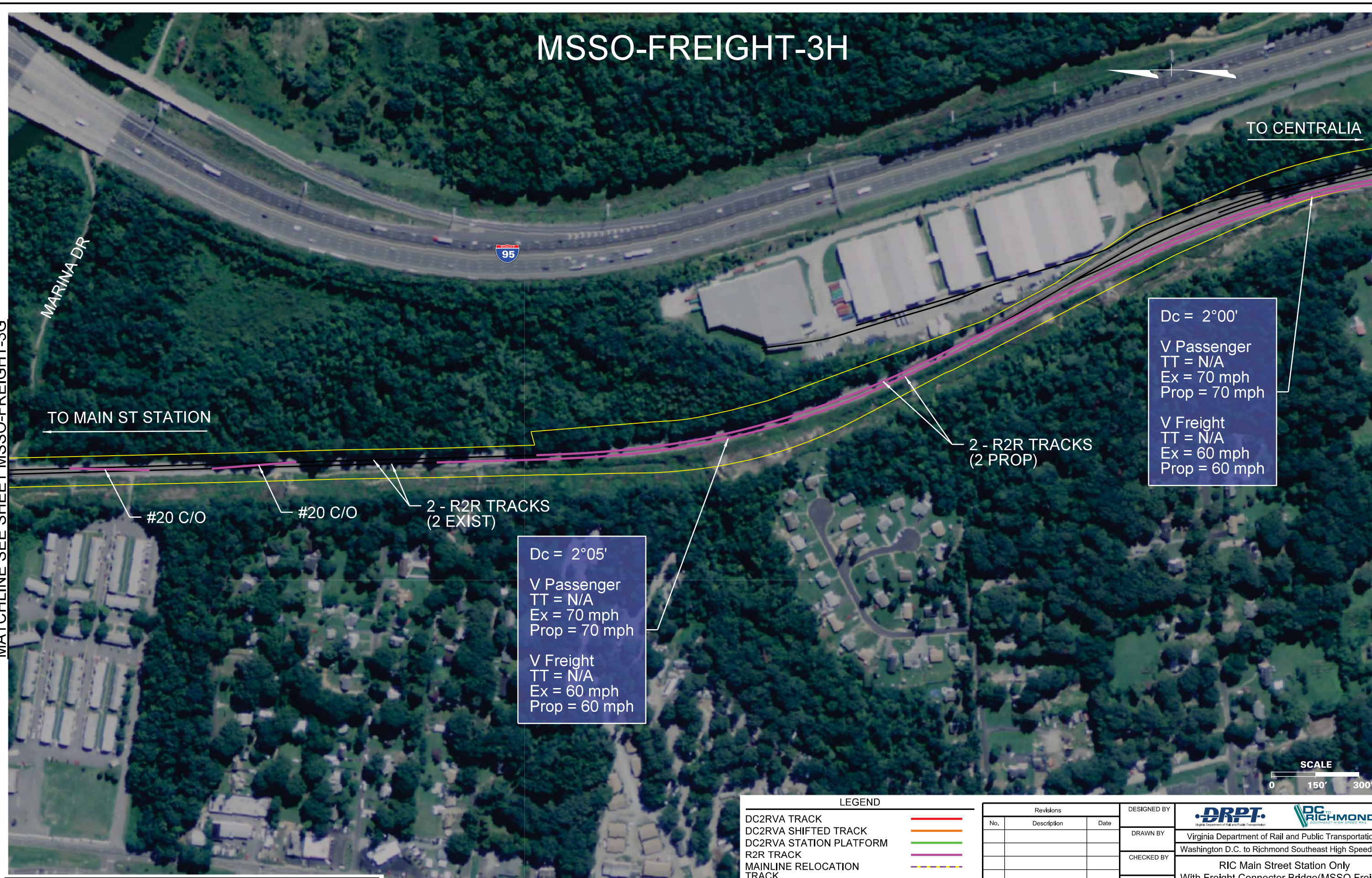
DESIGNED BY	 Virginia Department of Rail and Public Transportation		
DRAWN BY	Washington D.C. to Richmond Southeast High Speed Rail		
CHECKED BY	RIC Main Street Station Only With Freight Connector Bridge(MSSO Freight) Alignment Option Mapbook		
DATE	11/17/2015	PROJECT NO.	DRAWING NO.
SCALE	As Shown	DD	SHEET NO.
			21

THESE PLANS ARE UNFINISHED AND UNAPPROVED AND ARE NOT TO BE USED FOR ANY TYPE OF CONSTRUCTION OR THE ACQUISITION OF RIGHT OF WAY.

MSSO-FREIGHT-3H

MATCHLINE SEE SHEET MSSO-FREIGHT-3G

MATCHLINE SEE SHEET MSSO-FREIGHT-3I



THESE PLANS ARE UNFINISHED AND UNAPPROVED AND ARE NOT TO BE USED FOR ANY TYPE OF CONSTRUCTION OR THE ACQUISITION OF RIGHT OF WAY.

LEGEND

DC2RVA TRACK

DC2RVA SHIFTED TRACK

DC2RVA STATION PLATFORM

R2R TRACK

MAINLINE RELOCATION TRACK

RETIRED TRACK

EXISTING TRACK

EXISTING R/W

Revisions

No.	Description	Date

DESIGNED BY

DRAWN BY

CHECKED BY

DATE

SCALE

DRPT

Virginia Department of Rail and Public Transportation

RIC

Richmond

Richmond Southeast High Speed Rail

Washington D.C. to Richmond Southeast High Speed Rail

RIC Main Street Station Only

With Freight Connector Bridge(MSSO Freight)

Alignment Option Mapbook

PROJECT NO.

DRAWING NO.

SHEET NO.

As Shown

DD

22

MATCHLINE SEE SHEET MSSO-FREIGHT-3H

MSSO-FREIGHT-3I

TO MAIN ST STATION

2 - R2R TRACKS
(2 PROP)

Dc = 2°00'
V Passenger
TT = N/A
Ex = 70 mph
Prop = 70 mph

V Freight
TT = N/A
Ex = 60 mph
Prop = 60 mph

Dc = 2°05'
V Passenger
TT = N/A
Ex = 70 mph
Prop = 70 mph

V Freight
TT = N/A
Ex = 60 mph
Prop = 60 mph

TO CENTRALIA

ELLIHAM AVE

JEFFERSON DAVIS HWY



LEGEND

DC2RVA TRACK	
DC2RVA SHIFTED TRACK	
DC2RVA STATION PLATFORM	
R2R TRACK	
MAINLINE RELOCATION TRACK	
RETIRED TRACK	
EXISTING TRACK	
EXISTING R/W	

Revisions			DESIGNED BY
No.	Description	Date	
			DRAWN BY
			CHECKED BY
			DATE
			SCALE

DRPT

Virginia Department of Rail and Public Transportation

RIC

Richmond

Washington D.C. to Richmond Southeast High Speed Rail

RIC Main Street Station Only
With Freight Connector Bridge(MSSO Freight)
Alignment Option Mapbook

PROJECT NO.	DRAWING NO.	SHEET NO.
	DD	23

THESE PLANS ARE UNFINISHED AND UNAPPROVED AND ARE NOT TO BE USED FOR ANY TYPE OF CONSTRUCTION OR THE ACQUISITION OF RIGHT OF WAY.

MSSO-FREIGHT-3J

PERRYMONT RD

CHESTER RD

195

#20 C/O

2 - R2R TRACKS
(2 PROP)

KINGSDALE RD

TO MAIN ST STATION

TO CENTRALIA

JEFFERSON DAVIS HWY

1 301

MATCHLINE SEE SHEET MSSO-FREIGHT-3I

MATCHLINE SEE SHEET MSSO-FREIGHT-3K



LEGEND

DC2RVA TRACK	
DC2RVA SHIFTED TRACK	
DC2RVA STATION PLATFORM	
R2R TRACK	
MAINLINE RELOCATION TRACK	
RETIRED TRACK	
EXISTING TRACK	
EXISTING R/W	

Revisions		
No.	Description	Date

DESIGNED BY	 Virginia Department of Rail and Public Transportation		
DRAWN BY	Virginia Department of Rail and Public Transportation		
CHECKED BY	Washington D.C. to Richmond Southeast High Speed Rail		
DATE	11/17/2015		
SCALE	As Shown		
PROJECT NO.	DRAWING NO.	SHEET NO.	
	DD	24	

THESE PLANS ARE UNFINISHED AND UNAPPROVED AND ARE NOT TO BE USED FOR ANY TYPE OF CONSTRUCTION OR THE ACQUISITION OF RIGHT OF WAY.

MSSO-FREIGHT-3K

MATCHLINE SEE SHEET MSSO-FREIGHT-3J

TO MAIN ST STATION

2 - R2R TRACKS
(2 PROP)

BRINKLEY RD

KINGSDALE RD

CHESTER RD

145

TO CENTRALIA

MATCHLINE SEE SHEET MSSO-FREIGHT-3L

Dc = 2°30'
V Passenger
TT = N/A
Ex = 70 mph
Prop = 70 mph



V Freight
TT = N/A
Ex = 60 mph
Prop = 60 mph



LEGEND	
DC2RVA TRACK	—
DC2RVA SHIFTED TRACK	—
DC2RVA STATION PLATFORM	—
R2R TRACK	—
MAINLINE RELOCATION TRACK	—
RETIRED TRACK	—
EXISTING TRACK	—
EXISTING R/W	—

Revisions		
No.	Description	Date

DESIGNED BY
DRAWN BY
CHECKED BY
DATE 11/17/2015
SCALE As Shown



Virginia Department of Rail and Public Transportation

Washington D.C. to Richmond Southeast High Speed Rail

RIC Main Street Station Only
With Freight Connector Bridge(MSSO Freight)
Alignment Option Mapbook

PROJECT NO.	DRAWING NO. DD	SHEET NO. 25
-------------	-------------------	-----------------

THESE PLANS ARE UNFINISHED AND UNAPPROVED AND ARE NOT TO BE USED FOR ANY TYPE OF CONSTRUCTION OR THE ACQUISITION OF RIGHT OF WAY.

MSSO-FREIGHT-3L

CHESTER RD

145

288

WORLD WAR II VETERANS MEMORIAL HWY

Dc = 4°15'

V Passenger
TT = N/A
Ex = 50 mph
Prop = 50 mph

V Freight
TT = N/A
Ex = 40 mph
Prop = 40 mph

#20 C/O

#20 C/O

TO CENTRALIA

OLD LN

EXISTING
C/O

MATCHLINE SEE SHEET MSSO-FREIGHT-3K

TO MAIN ST STATION

2 - R2R TRACKS
(2 PROP)

Dc = 2°30'

V Passenger
TT = N/A
Ex = 70 mph
Prop = 70 mph

V Freight
TT = N/A
Ex = 60 mph
Prop = 60 mph

TO ACCA YARD

SCALE

0 150' 300'

LEGEND

DC2RVA TRACK	
DC2RVA SHIFTED TRACK	
DC2RVA STATION PLATFORM	
R2R TRACK	
MAINLINE RELOCATION TRACK	
RETIRED TRACK	
EXISTING TRACK	
EXISTING R/W	

Revisions		
No.	Description	Date

DESIGNED BY
DRAWN BY
CHECKED BY
DATE
SCALE

 Virginia Department of Rail and Public Transportation		
Washington D.C. to Richmond Southeast High Speed Rail		
RIC Main Street Station Only With Freight Connector Bridge(MSSO Freight) Alignment Option Mapbook		
PROJECT NO.	DRAWING NO.	SHEET NO.
	DD	26

THESE PLANS ARE UNFINISHED AND UNAPPROVED AND ARE NOT TO BE USED FOR ANY TYPE OF CONSTRUCTION OR THE ACQUISITION OF RIGHT OF WAY.

MSSO-FREIGHT-3M



MATCHLINE SEE SHEET MSSO-FREIGHT-3L

2 - R2R TRACKS
(2 PROP)

#15 T/O
TO MAIN ST STATION

CHESTER RD 144

TO PETERSBURG

#20 C/O
#20 C/O
#20 C/O
TO ACCA YARD

145

CENTRALIA RD

SCALE
0 150' 300'

LEGEND

- DC2RVA TRACK
- DC2RVA SHIFTED TRACK
- DC2RVA STATION PLATFORM
- R2R TRACK
- MAINLINE RELOCATION TRACK
- RETIRED TRACK
- EXISTING TRACK
- EXISTING R/W

Revisions		
No.	Description	Date

DESIGNED BY	 Virginia Department of Rail and Public Transportation Washington D.C. to Richmond Southeast High Speed Rail		
DRAWN BY			
CHECKED BY	RIC Main Street Station Only With Freight Connector Bridge(MSSO Freight) Alignment Option Mapbook		
DATE			
SCALE	PROJECT NO.	DRAWING NO.	SHEET NO.
As Shown		DD	27

THESE PLANS ARE UNFINISHED AND UNAPPROVED AND ARE NOT TO BE USED FOR ANY TYPE OF CONSTRUCTION OR THE ACQUISITION OF RIGHT OF WAY.

11/13/2015 4:24 PM
MSSO-FC-03M.dgn