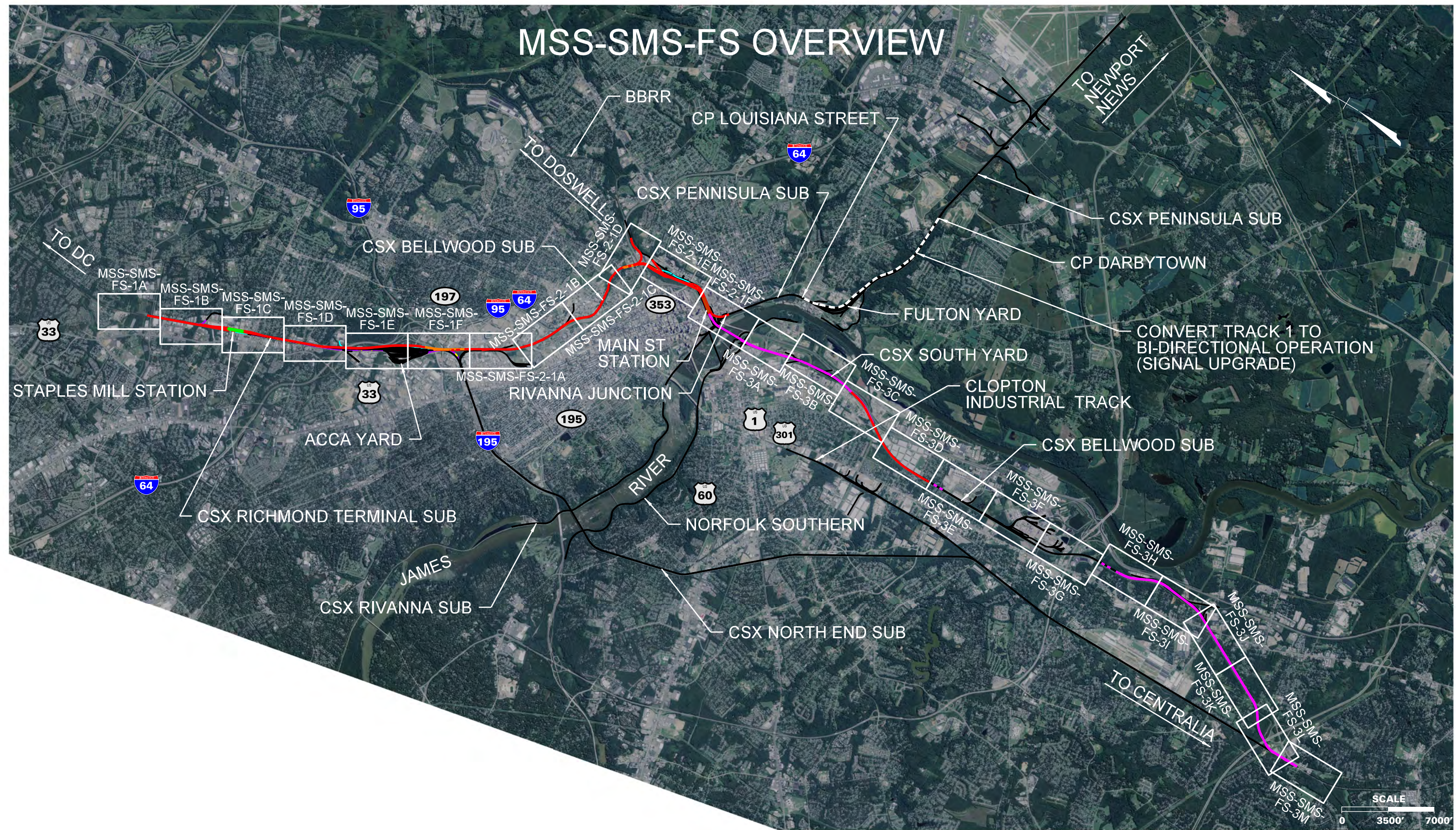


# MSS-SMS-FS OVERVIEW



THESE PLANS ARE UNFINISHED AND UNAPPROVED AND ARE NOT TO BE USED FOR ANY TYPE OF CONSTRUCTION OR THE ACQUISITION OF RIGHT OF WAY.

## LEGEND

DC2RVA TRACK	
DC2RVA SHIFTED TRACK	
DC2RVA STATION PLATFORM	
R2R TRACK	
MAINLINE RELOCATION TRACK	
RETIRED TRACK	
EXISTING TRACK	
EXISTING RW	

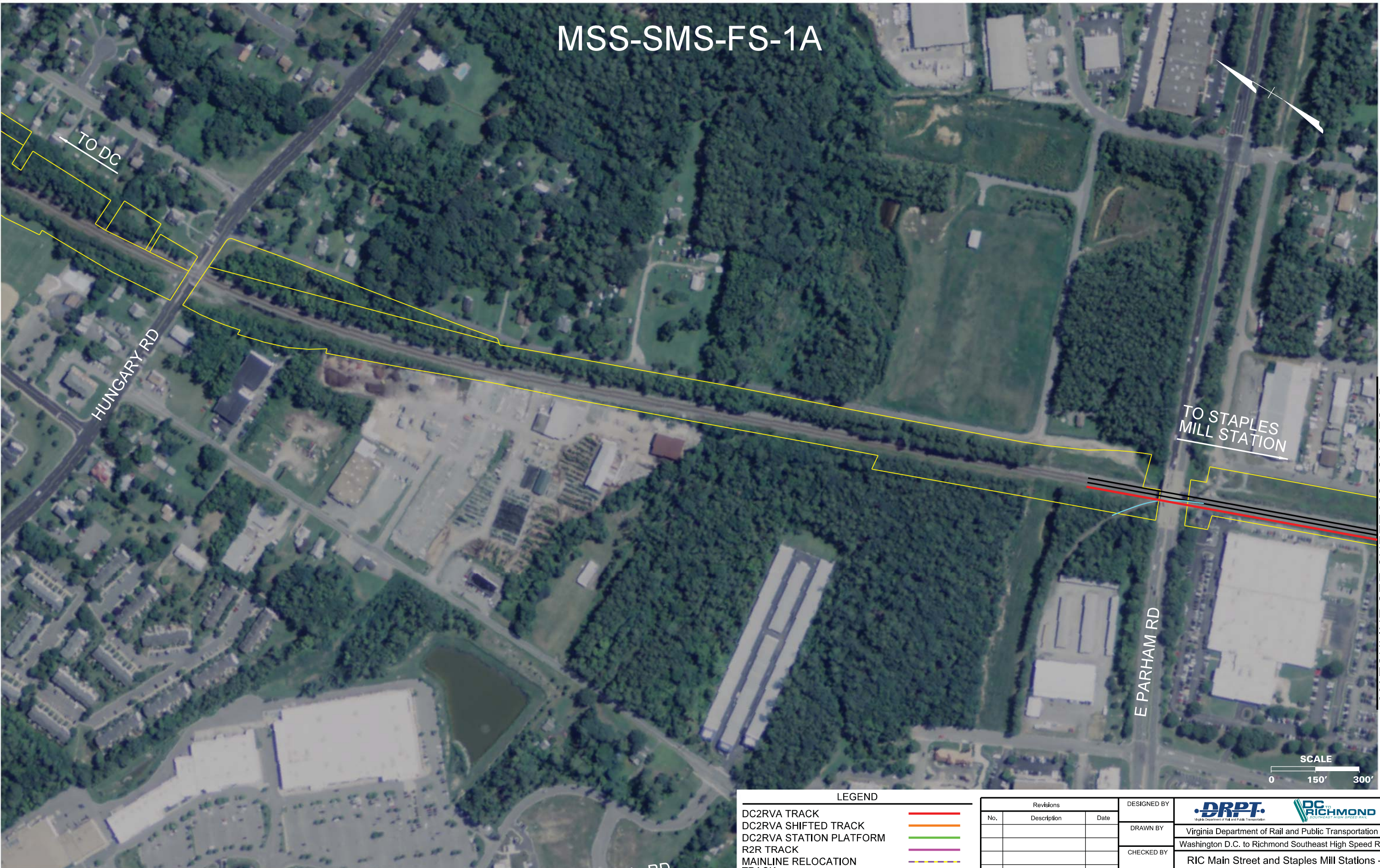
Revisions		
No.	Description	Date

DESIGNED BY
DRAWN BY
CHECKED BY
DATE 11/17/2015
SCALE As Shown

 Virginia Department of Rail and Public Transportation		
 Washington D.C. to Richmond Southeast High Speed Rail		
RIC Main Street and Staples Mill Stations - Full Service (MSS-SMS-FS) Alignment Option Mapbook		
PROJECT NO.	DRAWING NO. FF	SHEET NO. 1



MSS-SMS-FS-1A



THESE PLANS ARE UNFINISHED AND UNAPPROVED AND ARE NOT TO BE USED FOR ANY TYPE OF CONSTRUCTION OR THE ACQUISITION OF RIGHT OF WAY.

LEGEND	
DC2RVA TRACK	
DC2RVA SHIFTED TRACK	
DC2RVA STATION PLATFORM	
R2R TRACK	
MAINLINE RELOCATION TRACK	
RETIRED TRACK	
EXISTING TRACK	
EXISTING R/W	

Revisions		
No.	Description	Date

DESIGNED BY	 Virginia Department of Rail and Public Transportation		
DRAWN BY	Washington D.C. to Richmond Southeast High Speed Rail		
CHECKED BY	RIC Main Street and Staples Mill Stations - Full Service (MSS-SMS-FS) Alignment Option Mapbook		
DATE	11/17/2015	PROJECT NO.	DRAWING NO.
SCALE	As Shown	FF	SHEET NO.
			2

11/13/2015 4:23:40 PM  
Plotted by cpowell  
MSSM-FS-01A.dgn

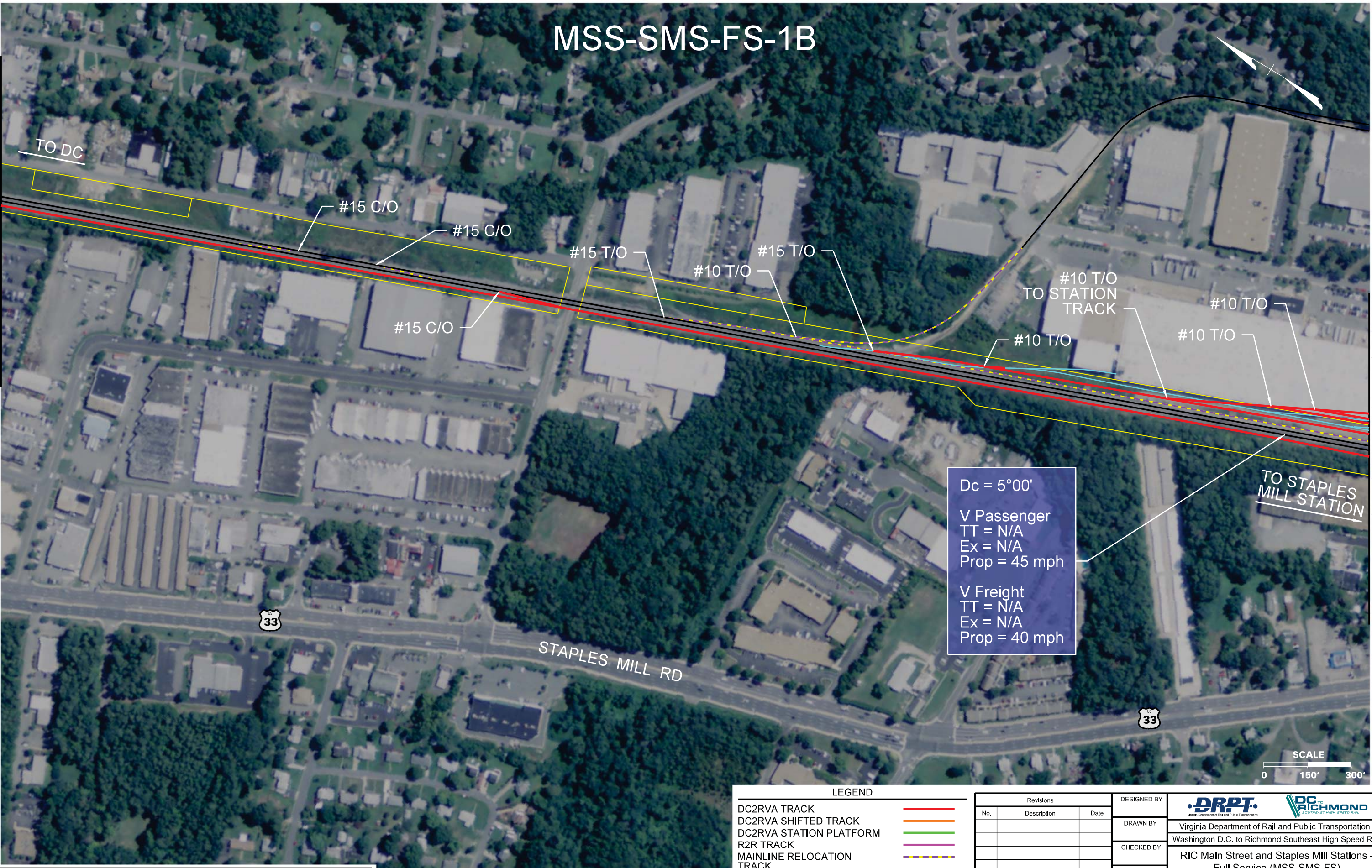
MATCHLINE SEE SHEET MSS-SMS-FS-1B



MSS-SMS-FS-1B

MATCHLINE SEE SHEET MSS-SMS-FS-1A

MATCHLINE SEE SHEET MSS-SMS-FS-1C



Dc = 5°00'  
V Passenger  
TT = N/A  
Ex = N/A  
Prop = 45 mph  
  
V Freight  
TT = N/A  
Ex = N/A  
Prop = 40 mph



THESE PLANS ARE UNFINISHED AND UNAPPROVED AND ARE NOT TO BE USED FOR ANY TYPE OF CONSTRUCTION OR THE ACQUISITION OF RIGHT OF WAY.

LEGEND

DC2RVA TRACK	
DC2RVA SHIFTED TRACK	
DC2RVA STATION PLATFORM	
R2R TRACK	
MAINLINE RELOCATION TRACK	
RETIRED TRACK	
EXISTING TRACK	
EXISTING R/W	

Revisions		
No.	Description	Date

DESIGNED BY	 Virginia Department of Rail and Public Transportation
DRAWN BY	
CHECKED BY	
DATE	11/17/2015
SCALE	As Shown

RIC Main Street and Staples Mill Stations - Full Service (MSS-SMS-FS) Alignment Option Mapbook		
PROJECT NO.	DRAWING NO. FF	SHEET NO. 3

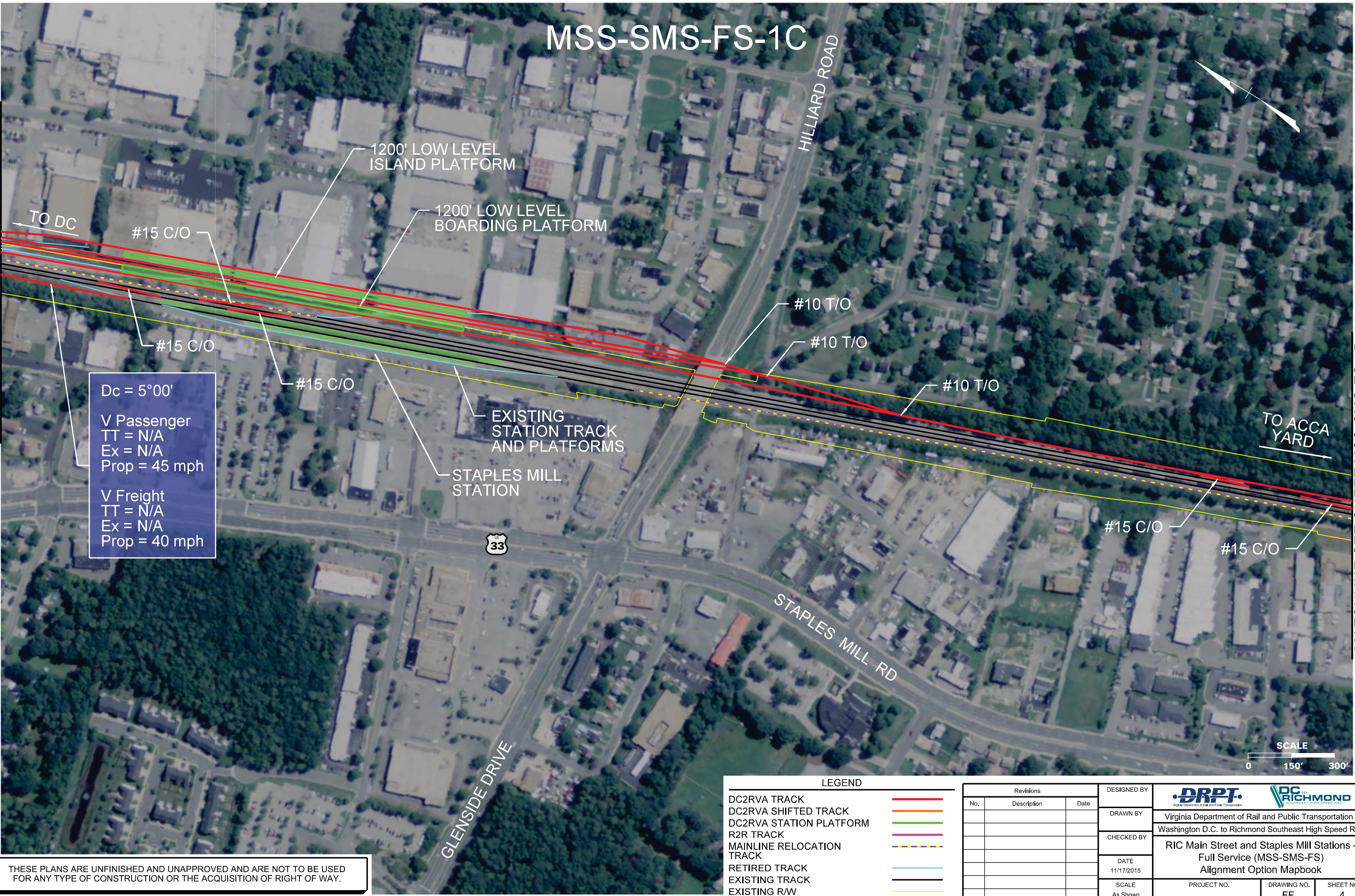
11/13/2015 4:23:45 PM  
Plotted by cpowell  
MSSM-FS-01B.dgn



MSS-SMS-FS-1C

MATCHLINE SEE SHEET MSS-SMS-FS-1B

MATCHLINE SEE SHEET MSS-SMS-FS-1D



Dc = 5°00'

V Passenger  
TT = N/A  
Ex = N/A  
Prop = 45 mph

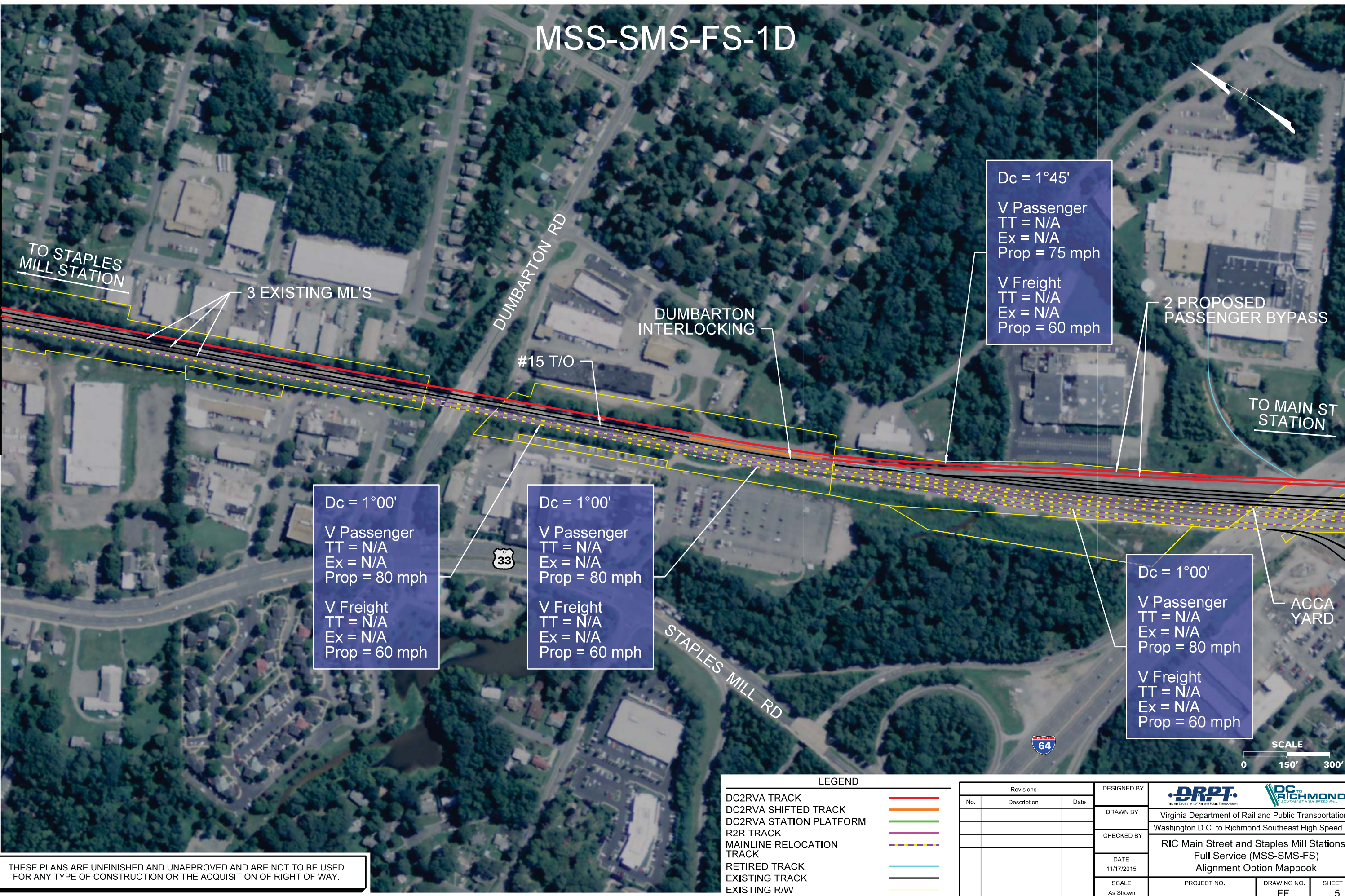
V Freight  
TT = N/A  
Ex = N/A  
Prop = 40 mph



MSS-SMS-FS-1D

MATCHLINE SEE SHEET MSS-SMS-FS-1C

MATCHLINE SEE SHEET MSS-SMS-FS-1E





# MSS-SMS-FS-1E

Dc = 1°00'  
V Passenger  
TT = N/A  
Ex = N/A  
Prop = 80 mph  
  
V Freight  
TT = N/A  
Ex = N/A  
Prop = 60 mph

Dc = 1°00'  
V Passenger  
TT = N/A  
Ex = N/A  
Prop = 80 mph  
  
V Freight  
TT = N/A  
Ex = N/A  
Prop = 60 mph

Dc = 3°00'  
V Passenger  
TT = N/A  
Ex = N/A  
Prop = 60 mph  
  
V Freight  
TT = N/A  
Ex = N/A  
Prop = 55 mph

Dc = 1°00'  
V Passenger  
TT = N/A  
Ex = N/A  
Prop = 80 mph  
  
V Freight  
TT = N/A  
Ex = N/A  
Prop = 60 mph

MATCHLINE SEE SHEET MSS-SMS-FS-1D

MATCHLINE SEE SHEET MSS-SMS-FS-1F

TO STAPLES  
MILL STATION

2 PROPOSED PASSENGER  
BYPASS

ACCA YARD

CSX BIDS /  
TRANSLOAD  
FACILITY

TO MAIN ST  
STATION

BRYAN PARK MAINTENANCE FACILITY



LEGEND

DC2RVA TRACK	Red line
DC2RVA SHIFTED TRACK	Orange line
DC2RVA STATION PLATFORM	Green line
R2R TRACK	Purple line
MAINLINE RELOCATION TRACK	Yellow dashed line
RETIRED TRACK	Blue line
EXISTING TRACK	Black line
EXISTING R/W	Yellow line

Revisions			DESIGNED BY
No.	Description	Date	

DRAWN BY	
CHECKED BY	
DATE	11/17/2015
SCALE	As Shown

DRPT  
Virginia Department of Rail and Public Transportation

RIC  
Richmond  
Richmond Southeast High Speed Rail

Virginia Department of Rail and Public Transportation  
Washington D.C. to Richmond Southeast High Speed Rail

RIC Main Street and Staples Mill Stations -  
Full Service (MSS-SMS-FS)  
Alignment Option Mapbook

PROJECT NO.	DRAWING NO.	SHEET NO.
	FF	6

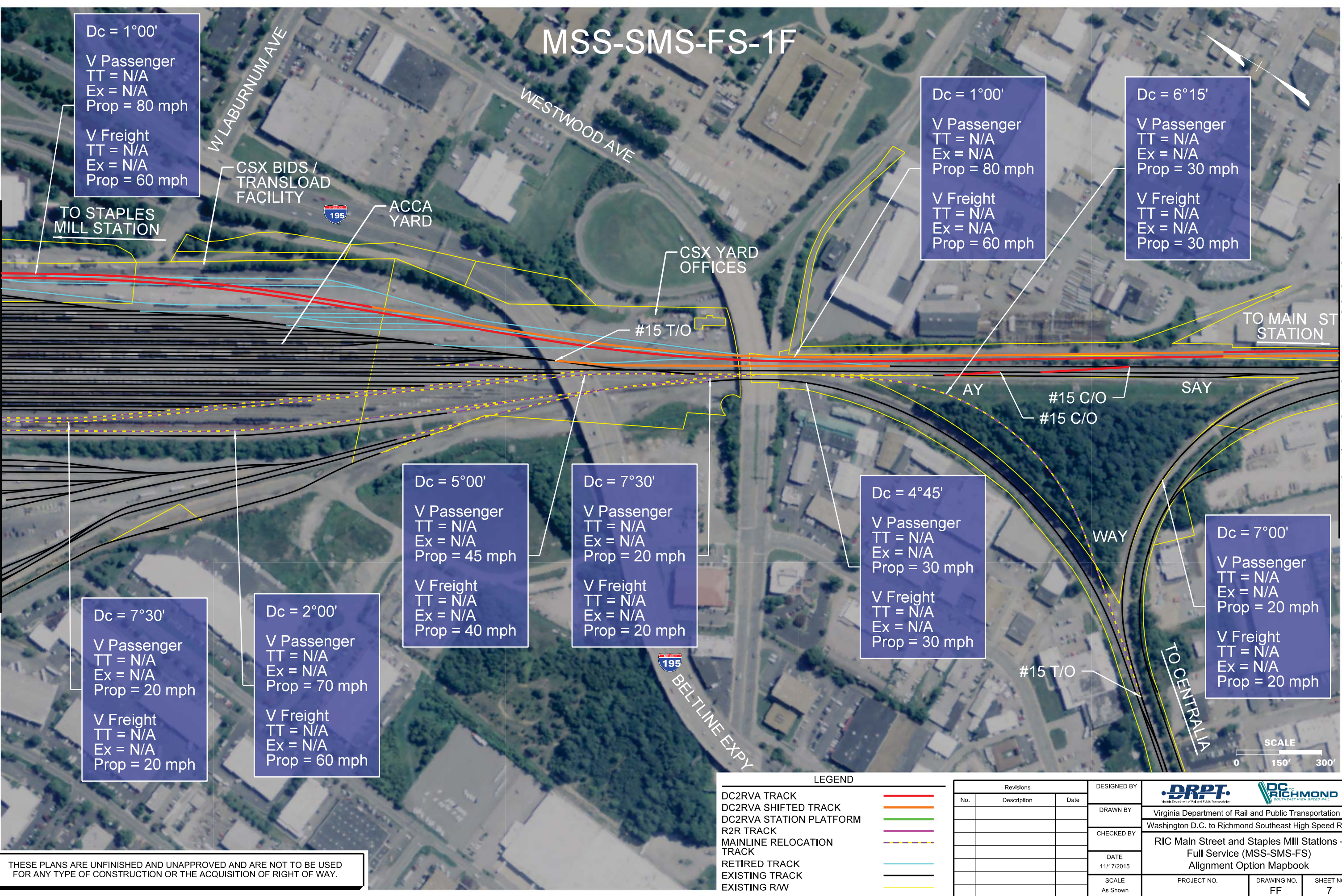
THESE PLANS ARE UNFINISHED AND UNAPPROVED AND ARE NOT TO BE USED FOR ANY TYPE OF CONSTRUCTION OR THE ACQUISITION OF RIGHT OF WAY.



# MSS-SMS-FS-1F

MATCHLINE SEE SHEET MSS-SMS-FS-1E

MATCHLINE SEE SHEET MSS-SMS-FS-2-1A



Dc = 1°00'  
V Passenger  
TT = N/A  
Ex = N/A  
Prop = 80 mph  
  
V Freight  
TT = N/A  
Ex = N/A  
Prop = 60 mph

Dc = 1°00'  
V Passenger  
TT = N/A  
Ex = N/A  
Prop = 80 mph  
  
V Freight  
TT = N/A  
Ex = N/A  
Prop = 60 mph

Dc = 6°15'  
V Passenger  
TT = N/A  
Ex = N/A  
Prop = 30 mph  
  
V Freight  
TT = N/A  
Ex = N/A  
Prop = 30 mph

Dc = 7°30'  
V Passenger  
TT = N/A  
Ex = N/A  
Prop = 20 mph  
  
V Freight  
TT = N/A  
Ex = N/A  
Prop = 20 mph

Dc = 2°00'  
V Passenger  
TT = N/A  
Ex = N/A  
Prop = 70 mph  
  
V Freight  
TT = N/A  
Ex = N/A  
Prop = 60 mph

Dc = 5°00'  
V Passenger  
TT = N/A  
Ex = N/A  
Prop = 45 mph  
  
V Freight  
TT = N/A  
Ex = N/A  
Prop = 40 mph

Dc = 7°30'  
V Passenger  
TT = N/A  
Ex = N/A  
Prop = 20 mph  
  
V Freight  
TT = N/A  
Ex = N/A  
Prop = 20 mph


Dc = 4°45'  
V Passenger  
TT = N/A  
Ex = N/A  
Prop = 30 mph  
  
V Freight  
TT = N/A  
Ex = N/A  
Prop = 30 mph

Dc = 7°00'  
V Passenger  
TT = N/A  
Ex = N/A  
Prop = 20 mph  
  
V Freight  
TT = N/A  
Ex = N/A  
Prop = 20 mph

THESE PLANS ARE UNFINISHED AND UNAPPROVED AND ARE NOT TO BE USED FOR ANY TYPE OF CONSTRUCTION OR THE ACQUISITION OF RIGHT OF WAY.

LEGEND		
DC2RVA TRACK		
DC2RVA SHIFTED TRACK		
DC2RVA STATION PLATFORM		
R2R TRACK		
MAINLINE RELOCATION TRACK		
RETIRED TRACK		
EXISTING TRACK		
EXISTING R/W		

Revisions		
No.	Description	Date

DESIGNED BY	 Virginia Department of Rail and Public Transportation		
DRAWN BY	Washington D.C. to Richmond Southeast High Speed Rail		
CHECKED BY	RIC Main Street and Staples Mill Stations - Full Service (MSS-SMS-FS) Alignment Option Mapbook		
DATE	11/17/2015	PROJECT NO.	DRAWING NO.
SCALE	As Shown	FF	SHEET NO.
			7

11/13/2015 4:24:08 PM  
Plotted by cpowell  
MSS-SMS-FS-01F.dgn



MSS-SMS-FS-2-1A

MATCHLINE SEE SHEET MSS-SMS-FS-1F

TO ACCA YARD

N BOULEVARD

#15 C/O

W LEIGH ST

HERMITAGE ROAD

OUT OF SERVICE  
TRACK TO BE  
REHABILITATED

MATCHLINE SEE SHEET  
MSS-SMS-FS-2-1B

TO MAIN ST  
STATION

Dc = 2°15'

V Passenger  
TT = 40 mph  
Ex = 40 mph  
Prop = 40 mph

V Freight  
TT = 25 mph  
Ex = 30 mph  
Prop = 30 mph



LEGEND

DC2RVA TRACK	
DC2RVA SHIFTED TRACK	
DC2RVA STATION PLATFORM	
R2R TRACK	
MAINLINE RELOCATION TRACK	
RETIRED TRACK	
EXISTING TRACK	
EXISTING RW	

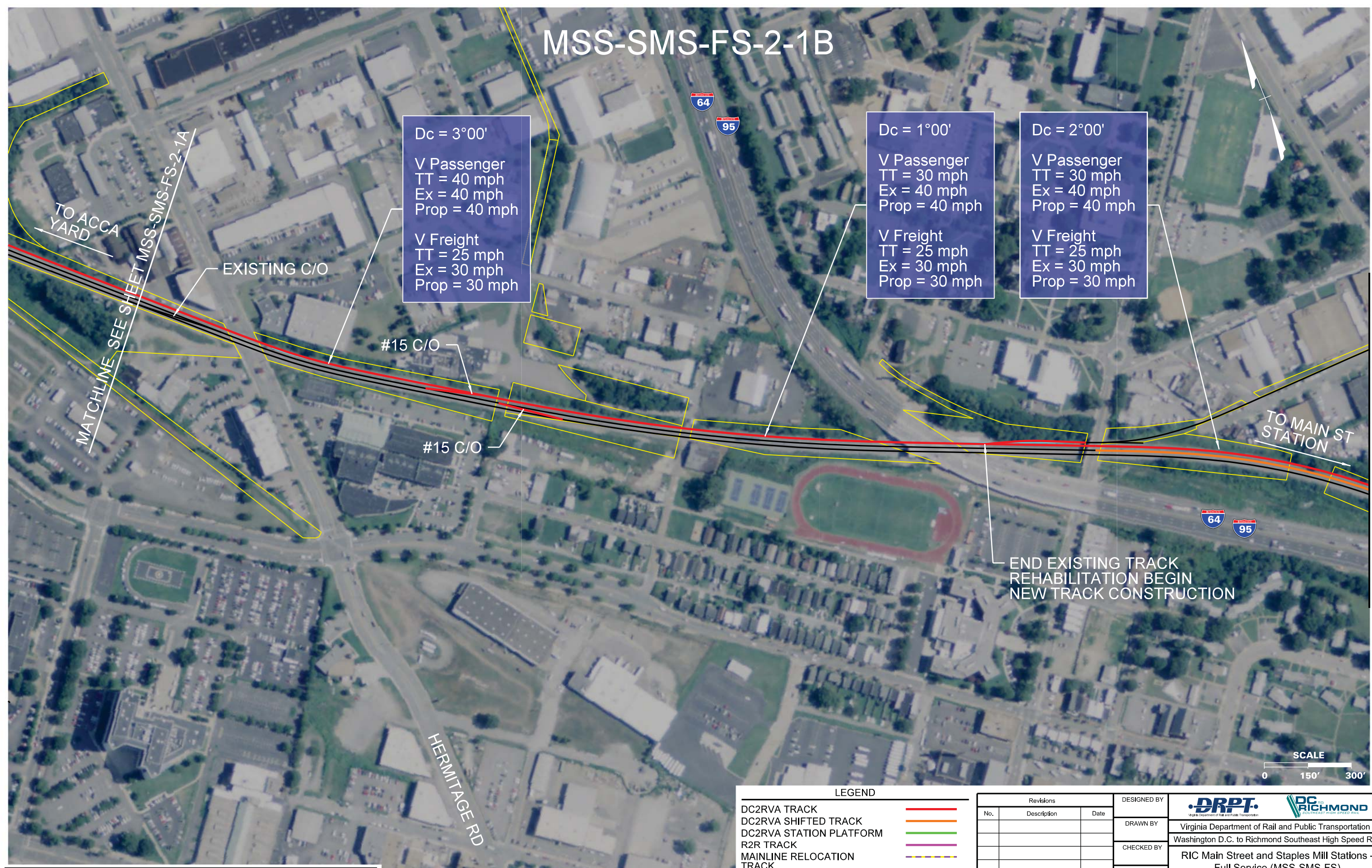
Revisions		
No.	Description	Date

DESIGNED BY	 Virginia Department of Rail and Public Transportation Washington D.C. to Richmond Southeast High Speed Rail	
DRAWN BY		
CHECKED BY		
DATE	11/17/2015	RIC Main Street and Staples Mill Stations - Full Service (MSS-SMS-FS) Alignment Option Mapbook
SCALE	As Shown	
PROJECT NO.	DRAWING NO. FF	SHEET NO. 8

THESE PLANS ARE UNFINISHED AND UNAPPROVED AND ARE NOT TO BE USED FOR ANY TYPE OF CONSTRUCTION OR THE ACQUISITION OF RIGHT OF WAY.




# MSS-SMS-FS-2-1B



THESE PLANS ARE UNFINISHED AND UNAPPROVED AND ARE NOT TO BE USED FOR ANY TYPE OF CONSTRUCTION OR THE ACQUISITION OF RIGHT OF WAY.

LEGEND	
DC2RVA TRACK	<span style="color: red;">—</span>
DC2RVA SHIFTED TRACK	<span style="color: orange;">—</span>
DC2RVA STATION PLATFORM	<span style="color: green;">—</span>
R2R TRACK	<span style="color: purple;">—</span>
MAINLINE RELOCATION TRACK	<span style="color: yellow;">—</span>
RETIRED TRACK	<span style="color: blue;">—</span>
EXISTING TRACK	<span style="color: black;">—</span>
EXISTING R/W	<span style="color: yellow;">—</span>

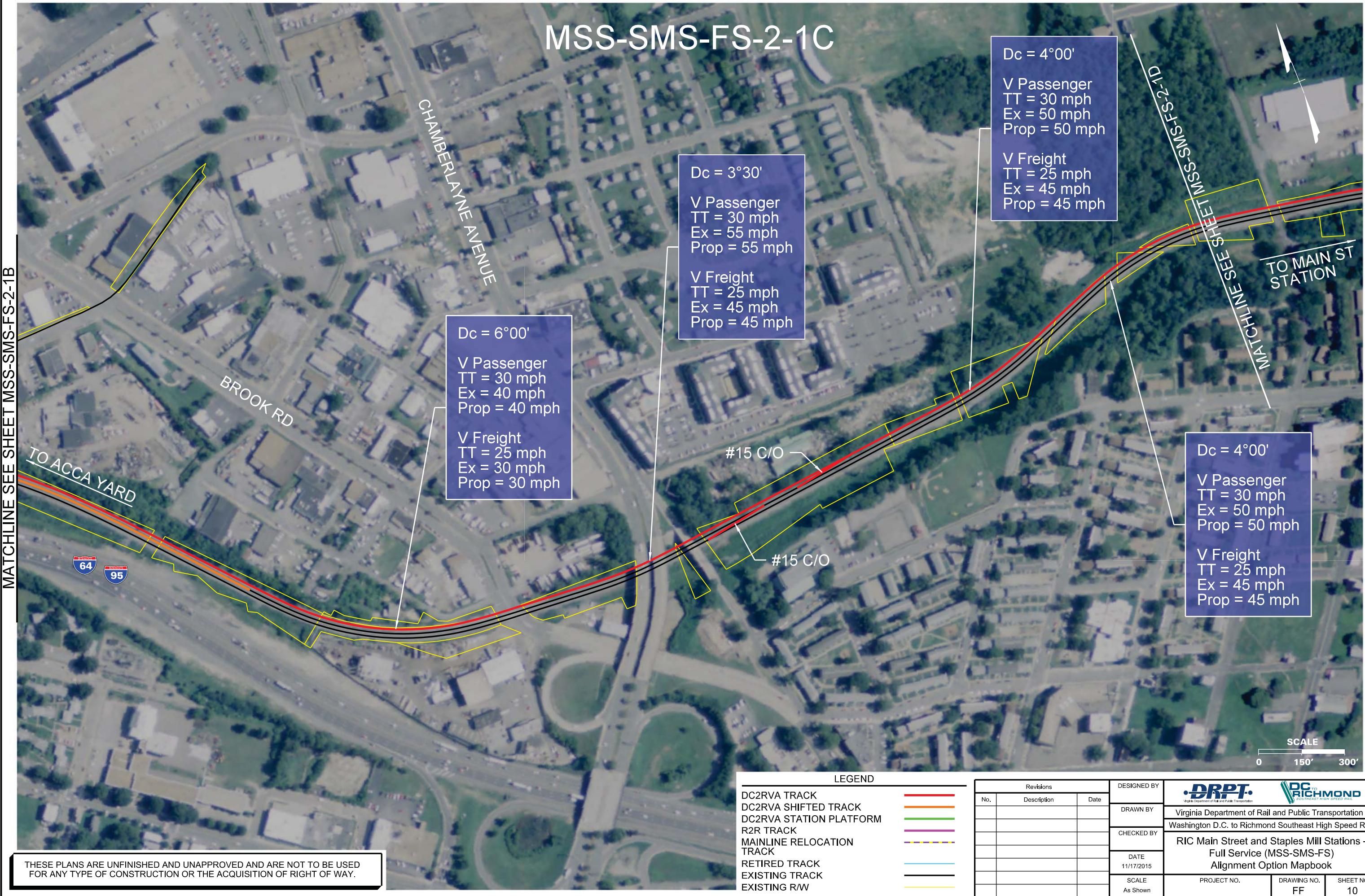
Revisions		
No.	Description	Date

DESIGNED BY	 Virginia Department of Rail and Public Transportation		
DRAWN BY	Washington D.C. to Richmond Southeast High Speed Rail		
CHECKED BY	RIC Main Street and Staples Mill Stations - Full Service (MSS-SMS-FS) Alignment Option Mapbook		
DATE	11/17/2015	PROJECT NO.	DRAWING NO.
SCALE	As Shown	FF	SHEET NO.
			9

Plotted by cpowell 11/13/2015 4:24:20 PM MSSM-FS-02-1B.dgn



MSS-SMS-FS-2-1C



MATCHLINE SEE SHEET MSS-SMS-FS-2-1B

Dc = 4°00'  
V Passenger  
TT = 30 mph  
Ex = 50 mph  
Prop = 50 mph  
V Freight  
TT = 25 mph  
Ex = 45 mph  
Prop = 45 mph

Dc = 3°30'  
V Passenger  
TT = 30 mph  
Ex = 55 mph  
Prop = 55 mph  
V Freight  
TT = 25 mph  
Ex = 45 mph  
Prop = 45 mph

Dc = 6°00'  
V Passenger  
TT = 30 mph  
Ex = 40 mph  
Prop = 40 mph  
V Freight  
TT = 25 mph  
Ex = 30 mph  
Prop = 30 mph

Dc = 4°00'  
V Passenger  
TT = 30 mph  
Ex = 50 mph  
Prop = 50 mph  
V Freight  
TT = 25 mph  
Ex = 45 mph  
Prop = 45 mph

#15 C/O

#15 C/O

TO MAIN ST  
STATION

TO ACCA YARD

SCALE  
0 150' 300'

LEGEND

DC2RVA TRACK	Red line
DC2RVA SHIFTED TRACK	Orange line
DC2RVA STATION PLATFORM	Green line
R2R TRACK	Purple line
MAINLINE RELOCATION TRACK	Blue dashed line
RETIRED TRACK	Light blue line
EXISTING TRACK	Black line
EXISTING R/W	Yellow line

Revisions			DESIGNED BY
No.	Description	Date	
			DRAWN BY
			CHECKED BY
			DATE
			SCALE

DRPT  
Virginia Department of Rail and Public Transportation

RIC  
RICHMOND  
SOUTHEAST HIGH SPEED RAIL

Virginia Department of Rail and Public Transportation  
Washington D.C. to Richmond Southeast High Speed Rail

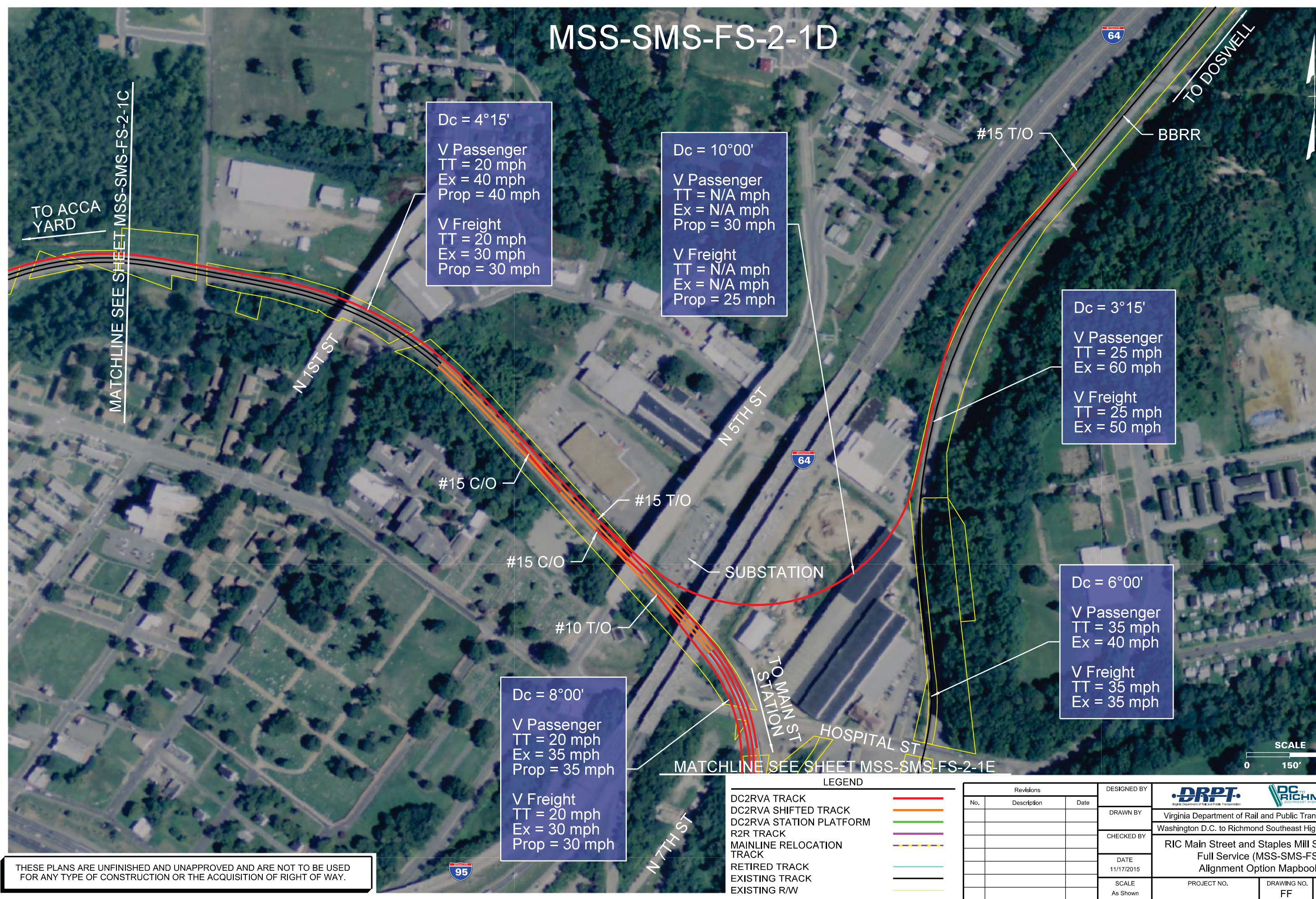
RIC Main Street and Staples Mill Stations -  
Full Service (MSS-SMS-FS)  
Alignment Option Mapbook

PROJECT NO.	DRAWING NO.	SHEET NO.
	FF	10

THESE PLANS ARE UNFINISHED AND UNAPPROVED AND ARE NOT TO BE USED FOR ANY TYPE OF CONSTRUCTION OR THE ACQUISITION OF RIGHT OF WAY.



MSS-SMS-FS-2-1D



Dc = 4°15'

V Passenger  
TT = 20 mph  
Ex = 40 mph  
Prop = 40 mph

V Freight  
TT = 20 mph  
Ex = 30 mph  
Prop = 30 mph

Dc = 10°00'

V Passenger  
TT = N/A mph  
Ex = N/A mph  
Prop = 30 mph

V Freight  
TT = N/A mph  
Ex = N/A mph  
Prop = 25 mph

Dc = 3°15'

V Passenger  
TT = 25 mph  
Ex = 60 mph

V Freight  
TT = 25 mph  
Ex = 50 mph

Dc = 6°00'

V Passenger  
TT = 35 mph  
Ex = 40 mph

V Freight  
TT = 35 mph  
Ex = 35 mph

Dc = 8°00'

V Passenger  
TT = 20 mph  
Ex = 35 mph  
Prop = 35 mph

V Freight  
TT = 20 mph  
Ex = 30 mph  
Prop = 30 mph

LEGEND

DC2RVA TRACK	Red line
DC2RVA SHIFTED TRACK	Orange line
DC2RVA STATION PLATFORM	Green line
R2R TRACK	Purple line
MAINLINE RELOCATION TRACK	Yellow line
RETIRED TRACK	Blue line
EXISTING TRACK	Black line
EXISTING R/W	Yellow line

Revisions		
No.	Description	Date

DESIGNED BY
DRAWN BY
CHECKED BY
DATE 11/17/2015
SCALE As Shown

Virginia Department of Rail and Public Transportation  
Washington D.C. to Richmond Southeast High Speed Rail

RIC Main Street and Staples Mill Stations - Full Service (MSS-SMS-FS) Alignment Option Mapbook

PROJECT NO.	DRAWING NO. FF	SHEET NO. 11
-------------	-------------------	-----------------

THESE PLANS ARE UNFINISHED AND UNAPPROVED AND ARE NOT TO BE USED FOR ANY TYPE OF CONSTRUCTION OR THE ACQUISITION OF RIGHT OF WAY.

11/13/2015 4:24:30 PM  
Plotted by cpowell  
MSSM-FS-02-1D.dgn



# MSS-SMS-FS-2-1E

Dc = 5°00'  
V Passenger  
TT = N/A  
Ex = N/A  
Prop = 45 mph  
  
V Freight  
TT = N/A  
Ex = N/A  
Prop = 40 mph

Dc = 5°00'  
V Passenger  
TT = N/A  
Ex = N/A  
Prop = 45 mph  
  
V Freight  
TT = N/A  
Ex = N/A  
Prop = 40 mph

Dc = 5°30'  
V Passenger  
TT = 15 mph  
Ex = 45 mph  
Prop = 45 mph  
  
V Freight  
TT = 15 mph  
Ex = 40 mph  
Prop = 40 mph

OLIVER HILL WAY

SHOCKOE CREEK  
DRAINAGE STRUCTURE

BROWN ST

E BROAD ST

MATCHLINE SEE SHEET MSS-SMS-FS-2-1D

MATCHLINE SEE SHEET MSS-SMS-FS-2-1F

TO DOSWELL

TO ACCA YD

TO MAIN ST  
STATION

MAINTENANCE FACILITY  
THREE TRACKS CLEAR LENGTHS:  
975TF, 1275TF & 1475TF

Dc = 2°45'  
V Passenger  
TT = 20 mph  
Ex = N/A  
Prop = 65 mph  
  
V Freight  
TT = 20 mph  
Ex = N/A  
Prop = 55 mph

Dc = 7°45'  
V Passenger  
TT = 10 mph  
Ex = 35 mph  
Prop = 35 mph  
  
V Freight  
TT = 10 mph  
Ex = 30 mph  
Prop = 30 mph

353

33

64

95

95

## LEGEND

- DC2RVA TRACK
- DC2RVA SHIFTED TRACK
- DC2RVA STATION PLATFORM
- R2R TRACK
- MAINLINE RELOCATION TRACK
- RETIRED TRACK
- EXISTING TRACK
- EXISTING R/W

Revisions		
No.	Description	Date

DESIGNED BY	<b>DRPT</b> Virginia Department of Rail and Public Transportation		
DRAWN BY	Washington D.C. to Richmond Southeast High Speed Rail		
CHECKED BY	RIC Main Street and Staples Mill Stations - Full Service (MSS-SMS-FS) Alignment Option Mapbook		
DATE	11/17/2015	PROJECT NO.	DRAWING NO.
SCALE	As Shown	FF	SHEET NO.
			12

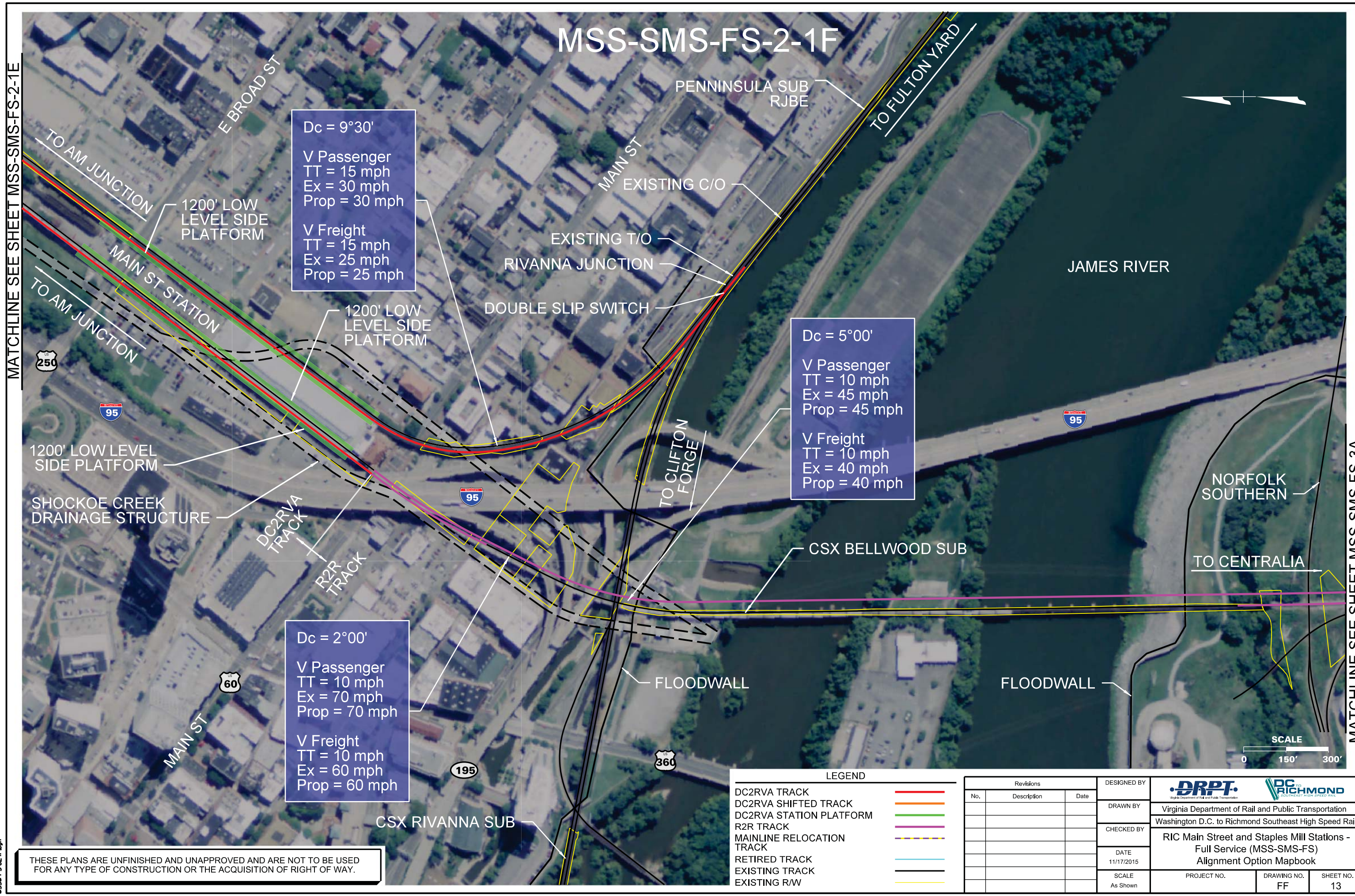
THESE PLANS ARE UNFINISHED AND UNAPPROVED AND ARE NOT TO BE USED FOR ANY TYPE OF CONSTRUCTION OR THE ACQUISITION OF RIGHT OF WAY.

11/13/2015 4:24:35 PM  
Plotted by cpowell  
MSSM-FS-02-1E.dgn



# MSS-SMS-FS-2-1F

MATCHLINE SEE SHEET MSS-SMS-FS-2-1E



Dc = 9°30'

V Passenger  
TT = 15 mph  
Ex = 30 mph  
Prop = 30 mph

V Freight  
TT = 15 mph  
Ex = 25 mph  
Prop = 25 mph

Dc = 5°00'

V Passenger  
TT = 10 mph  
Ex = 45 mph  
Prop = 45 mph

V Freight  
TT = 10 mph  
Ex = 40 mph  
Prop = 40 mph

Dc = 2°00'

V Passenger  
TT = 10 mph  
Ex = 70 mph  
Prop = 70 mph

V Freight  
TT = 10 mph  
Ex = 60 mph  
Prop = 60 mph

LEGEND	
DC2RVA TRACK	<span style="color: red;">—</span>
DC2RVA SHIFTED TRACK	<span style="color: orange;">—</span>
DC2RVA STATION PLATFORM	<span style="color: green;">—</span>
R2R TRACK	<span style="color: purple;">—</span>
MAINLINE RELOCATION TRACK	<span style="color: blue;">—</span>
RETIRED TRACK	<span style="color: lightblue;">—</span>
EXISTING TRACK	<span style="color: black;">—</span>
EXISTING R/W	<span style="color: yellow;">—</span>

Revisions		
No.	Description	Date

DESIGNED BY			
DRAWN BY	Virginia Department of Rail and Public Transportation		
CHECKED BY	Washington D.C. to Richmond Southeast High Speed Rail		
DATE	11/17/2015		
SCALE	As Shown		
PROJECT NO.	DRAWING NO.	SHEET NO.	
	FF	13	

THESE PLANS ARE UNFINISHED AND UNAPPROVED AND ARE NOT TO BE USED FOR ANY TYPE OF CONSTRUCTION OR THE ACQUISITION OF RIGHT OF WAY.

Plotted by cpowell 11/13/2015 4:24:40 PM MSSM-FS-02-1F.dgn

MATCHLINE SEE SHEET MSS-SMS-FS-3A



# MSS-SMS-FS-3A

JAMES RIVER



TO CENTRALIA

2 - R2R TRACKS  
(1 EXIST AND 1 PROP)

#20 C/O

#20 C/O

#10 T/O

TO MAIN ST STATION

MATCHLINE SEE SHEET MSS-SMS-FS-2-1F

MATCHLINE SEE SHEET MSS-SMS-FS-3B

E. 4TH ST.

MAURY ST.



## LEGEND

- DC2RVA TRACK
- DC2RVA SHIFTED TRACK
- DC2RVA STATION PLATFORM
- R2R TRACK
- MAINLINE RELOCATION TRACK
- RETIRED TRACK
- EXISTING TRACK
- EXISTING R/W

Revisions		
No.	Description	Date

DESIGNED BY
DRAWN BY
CHECKED BY
DATE 11/17/2015
SCALE As Shown

Virginia Department of Rail and Public Transportation  
Washington D.C. to Richmond Southeast High Speed Rail

RIC Main Street and Staples Mill Stations -  
Full Service (MSS-SMS-FS)  
Alignment Option Mapbook

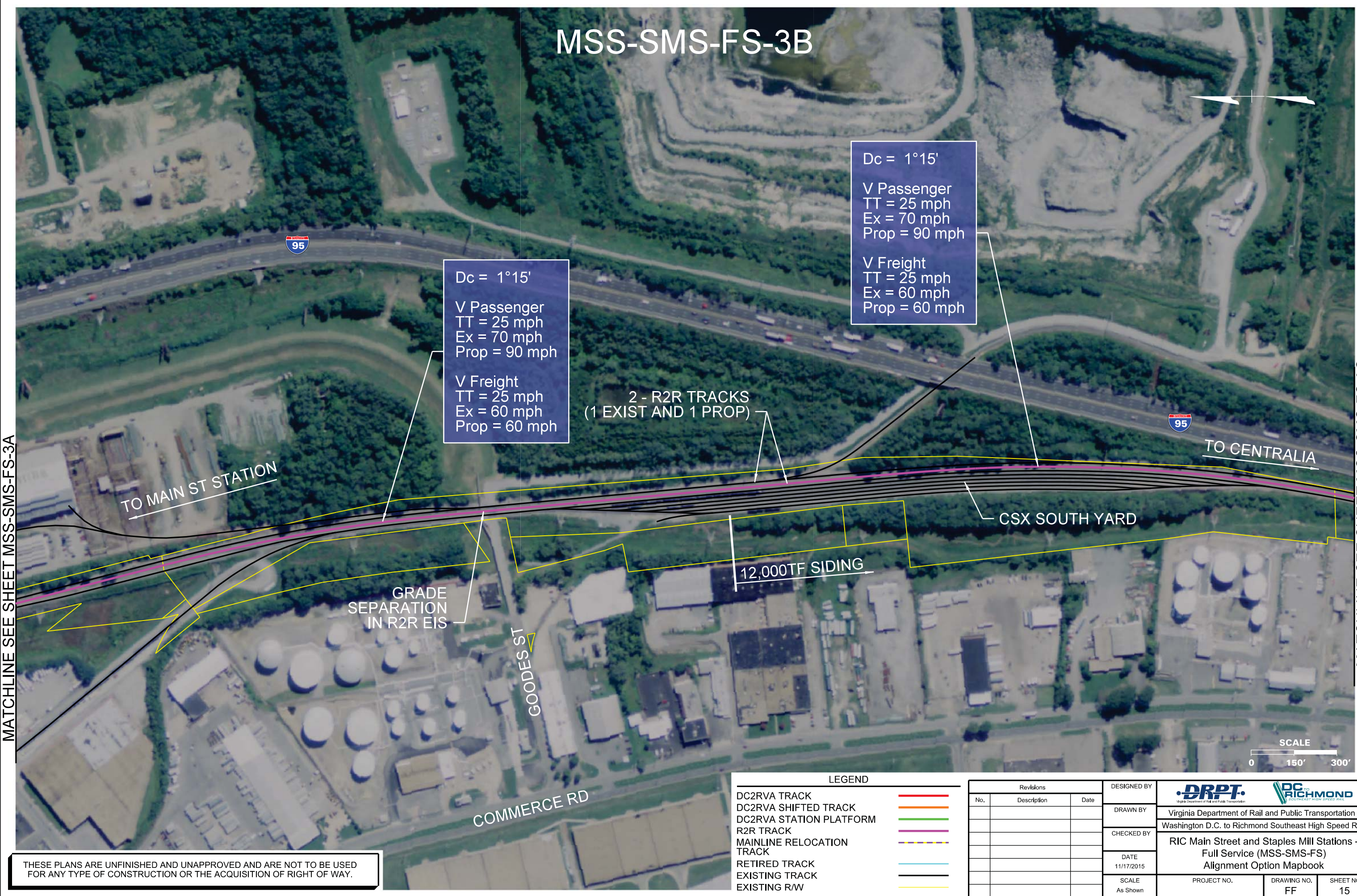
PROJECT NO.	DRAWING NO. FF	SHEET NO. 14
-------------	-------------------	-----------------

THESE PLANS ARE UNFINISHED AND UNAPPROVED AND ARE NOT TO BE USED FOR ANY TYPE OF CONSTRUCTION OR THE ACQUISITION OF RIGHT OF WAY.

11/13/2015 4:24:44 PM  
Plotted by cpowell  
MSSM-FS-03A.dgn



MSS-SMS-FS-3B



MATCHLINE SEE SHEET MSS-SMS-FS-3A

MATCHLINE SEE SHEET MSS-SMS-FS-3C

Plotted by cpowell 11/13/2015 4:24:50 PM MSSM-FS-03B.dgn

THESE PLANS ARE UNFINISHED AND UNAPPROVED AND ARE NOT TO BE USED FOR ANY TYPE OF CONSTRUCTION OR THE ACQUISITION OF RIGHT OF WAY.

LEGEND	
DC2RVA TRACK	
DC2RVA SHIFTED TRACK	
DC2RVA STATION PLATFORM	
R2R TRACK	
MAINLINE RELOCATION TRACK	
RETIRED TRACK	
EXISTING TRACK	
EXISTING R/W	

Revisions		
No.	Description	Date

DESIGNED BY	 Virginia Department of Rail and Public Transportation		
DRAWN BY	Washington D.C. to Richmond Southeast High Speed Rail		
CHECKED BY	RIC Main Street and Staples Mill Stations - Full Service (MSS-SMS-FS) Alignment Option Mapbook		
DATE	11/17/2015	PROJECT NO.	DRAWING NO.
SCALE	As Shown	FF	SHEET NO.
			15



MSS-SMS-FS-3C

MATCHLINE SEE SHEET MSS-SMS-FS-3B



MATCHLINE SEE SHEET MSS-SMS-FS-3D

THESE PLANS ARE UNFINISHED AND UNAPPROVED AND ARE NOT TO BE USED FOR ANY TYPE OF CONSTRUCTION OR THE ACQUISITION OF RIGHT OF WAY.

LEGEND

DC2RVA TRACK	
DC2RVA SHIFTED TRACK	
DC2RVA STATION PLATFORM	
R2R TRACK	
MAINLINE RELOCATION TRACK	
RETIRED TRACK	
EXISTING TRACK	
EXISTING R/W	

Revisions		
No.	Description	Date

DESIGNED BY	 Virginia Department of Rail and Public Transportation
DRAWN BY	
CHECKED BY	
DATE	11/17/2015
SCALE	As Shown

 Virginia Department of Rail and Public Transportation	 Richmond Southeast High Speed Rail	RIC Main Street and Staples Mill Stations - Full Service (MSS-SMS-FS) Alignment Option Mapbook		
		PROJECT NO.	DRAWING NO. FF	SHEET NO. 16

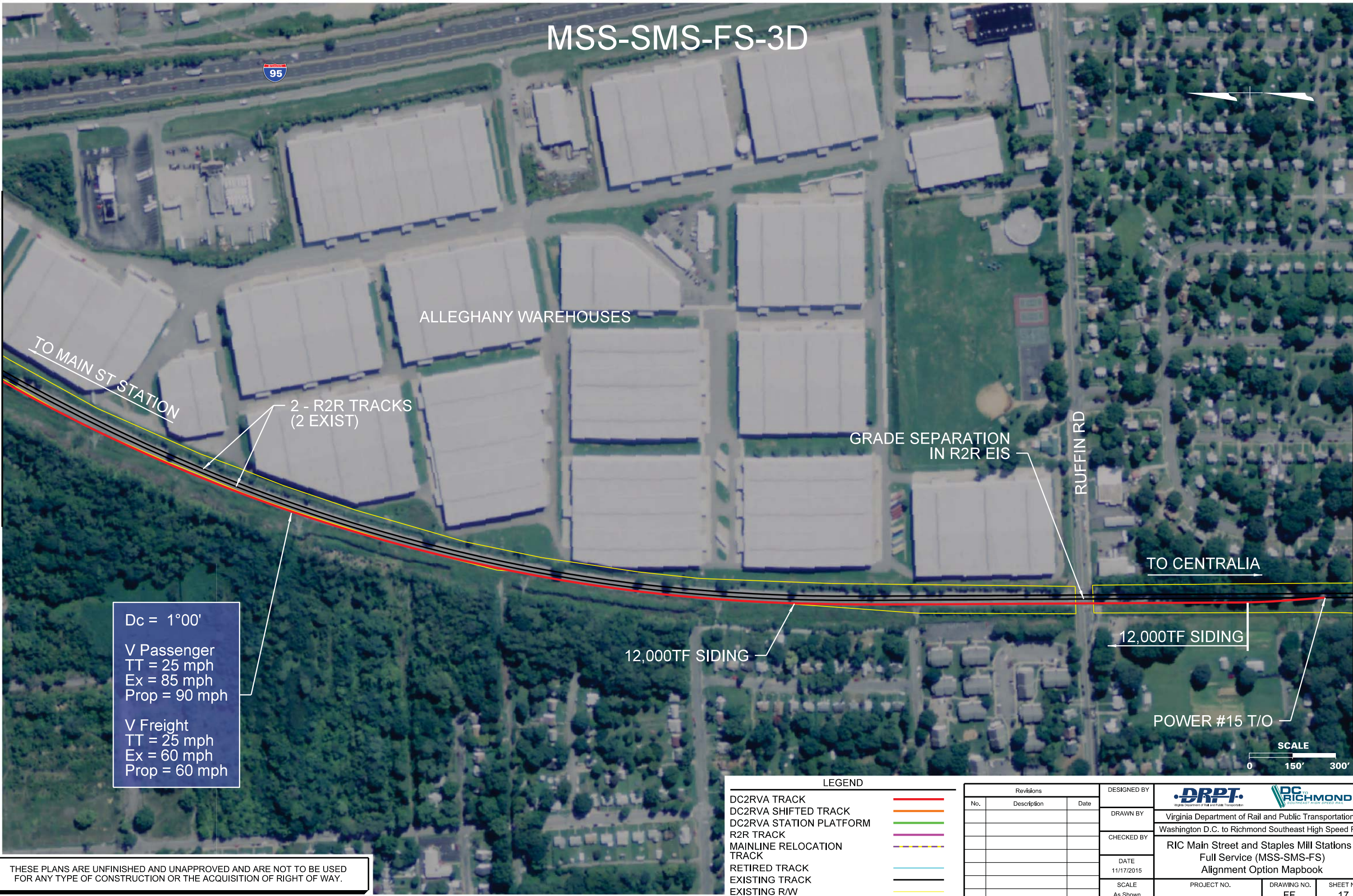
11/13/2015 4:24:56 PM  
Plotted by cpowell  
MSSM-FS-3C.dgn



MSS-SMS-FS-3D

MATCHLINE SEE SHEET MSS-SMS-FS-3C

MATCHLINE SEE SHEET MSS-SMS-FS-3E



THESE PLANS ARE UNFINISHED AND UNAPPROVED AND ARE NOT TO BE USED FOR ANY TYPE OF CONSTRUCTION OR THE ACQUISITION OF RIGHT OF WAY.

11/13/2015 4:25:13 PM  
Plotted by cpowell  
MSSM-FS-030.dgn

LEGEND		
DC2RVA TRACK		
DC2RVA SHIFTED TRACK		
DC2RVA STATION PLATFORM		
R2R TRACK		
MAINLINE RELOCATION TRACK		
RETIRED TRACK		
EXISTING TRACK		
EXISTING R/W		

Revisions		
No.	Description	Date

DESIGNED BY	 Virginia Department of Rail and Public Transportation Washington D.C. to Richmond Southeast High Speed Rail
DRAWN BY	
CHECKED BY	
DATE	11/17/2015
SCALE	As Shown

 Virginia Department of Rail and Public Transportation Washington D.C. to Richmond Southeast High Speed Rail	PROJECT NO.	DRAWING NO.	SHEET NO.
		FF	17



MSS-SMS-FS-3E

PHILLIP MORRIS USA

161

TO MAIN ST STATION

TO CENTRALIA

#20 C/O

#20 C/O

BELLS RD

GRADE SEPARATION  
IN R2R EIS

2 - R2R TRACKS  
(2 EXIST)

DALE AVE



MATCHLINE SEE SHEET MSS-SMS-FS-3D

MATCHLINE SEE SHEET MSS-SMS-FS-3F

LEGEND	
DC2RVA TRACK	
DC2RVA SHIFTED TRACK	
DC2RVA STATION PLATFORM	
R2R TRACK	
MAINLINE RELOCATION TRACK	
RETIRED TRACK	
EXISTING TRACK	
EXISTING R/W	

Revisions		
No.	Description	Date

DESIGNED BY
DRAWN BY
CHECKED BY
DATE 11/17/2015
SCALE As Shown

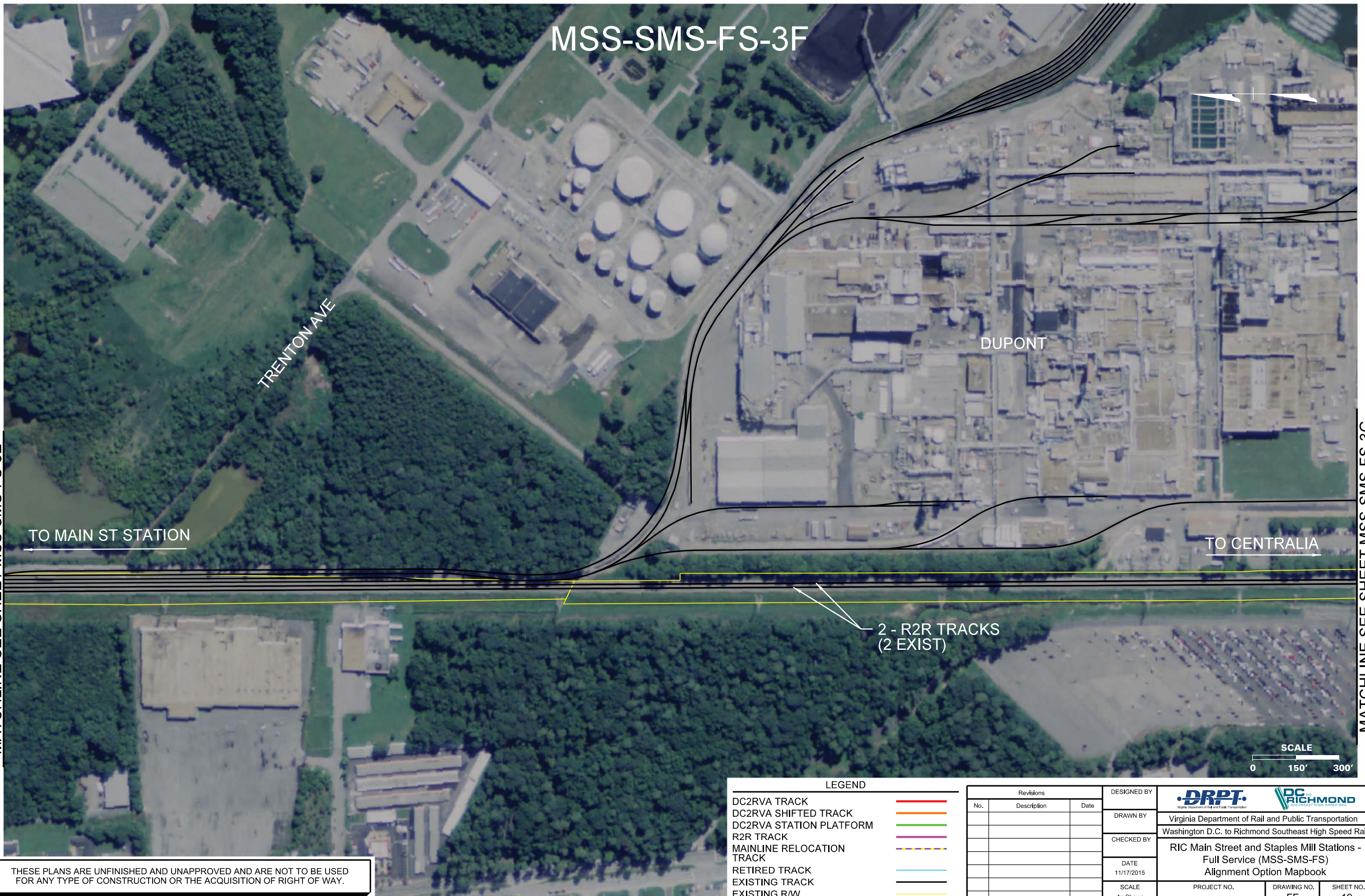
 Virginia Department of Rail and Public Transportation		
 Washington D.C. to Richmond Southeast High Speed Rail		
RIC Main Street and Staples Mill Stations - Full Service (MSS-SMS-FS) Alignment Option Mapbook		
PROJECT NO.	DRAWING NO. FF	SHEET NO. 18

THESE PLANS ARE UNFINISHED AND UNAPPROVED AND ARE NOT TO BE USED FOR ANY TYPE OF CONSTRUCTION OR THE ACQUISITION OF RIGHT OF WAY.



Plotted by cpowell 11/13/2015 4:25:23 PM  
MSSM-FS-3F.dgn

MATCHLINE SEE SHEET MSS-SMS-FS-3E



MATCHLINE SEE SHEET MSS-SMS-FS-3G

THESE PLANS ARE UNFINISHED AND UNAPPROVED AND ARE NOT TO BE USED FOR ANY TYPE OF CONSTRUCTION OR THE ACQUISITION OF RIGHT OF WAY.

#### LEGEND

DC2RVA TRACK	
DC2RVA SHIFTED TRACK	
DC2RVA STATION PLATFORM	
R2R TRACK	
MAINLINE RELOCATION TRACK	
RETIRED TRACK	
EXISTING TRACK	
EXISTING R/W	

Revisions		
No.	Description	Date

DESIGNED BY
DRAWN BY
CHECKED BY
DATE 11/17/2015
SCALE As Shown

 Virginia Department of Rail and Public Transportation		
 Richmond Southeast High Speed Rail		
RIC Main Street and Staples Mill Stations - Full Service (MSS-SMS-FS) Alignment Option Mapbook		
PROJECT NO.	DRAWING NO. FF	SHEET NO. 19



# MSS-SMS-FS-3G

CHIPPENHAM PKWY

STATION RD  
TO CENTRALIA

DUPONT

Dc = 2°10'  
V Passenger  
TT = N/A  
Ex = 70 mph  
  
V Freight  
TT = N/A  
Ex = 60 mph

TO MAIN ST STATION

2 - R2R TRACKS  
(2 EXIST)

Dc = 2°05'  
V Passenger  
TT = N/A  
Ex = 70 mph  
  
V Freight  
TT = N/A  
Ex = 60 mph

JEFFERSON DAVIS HWY

150

1 301

SCALE  
0 150' 300'


MATCHLINE SEE SHEET MSS-SMS-FS-3F

MATCHLINE SEE SHEET MSS-SMS-FS-3H

## LEGEND

- DC2RVA TRACK
- DC2RVA SHIFTED TRACK
- DC2RVA STATION PLATFORM
- R2R TRACK
- MAINLINE RELOCATION TRACK
- RETIRED TRACK
- EXISTING TRACK
- EXISTING R/W

Revisions		
No.	Description	Date

DESIGNED BY	 Virginia Department of Rail and Public Transportation Washington D.C. to Richmond Southeast High Speed Rail		
DRAWN BY			
CHECKED BY	RIC Main Street and Staples Mill Stations - Full Service (MSS-SMS-FS) Alignment Option Mapbook		
DATE			
SCALE	As Shown	PROJECT NO.	DRAWING NO.
			FF
		SHEET NO.	20

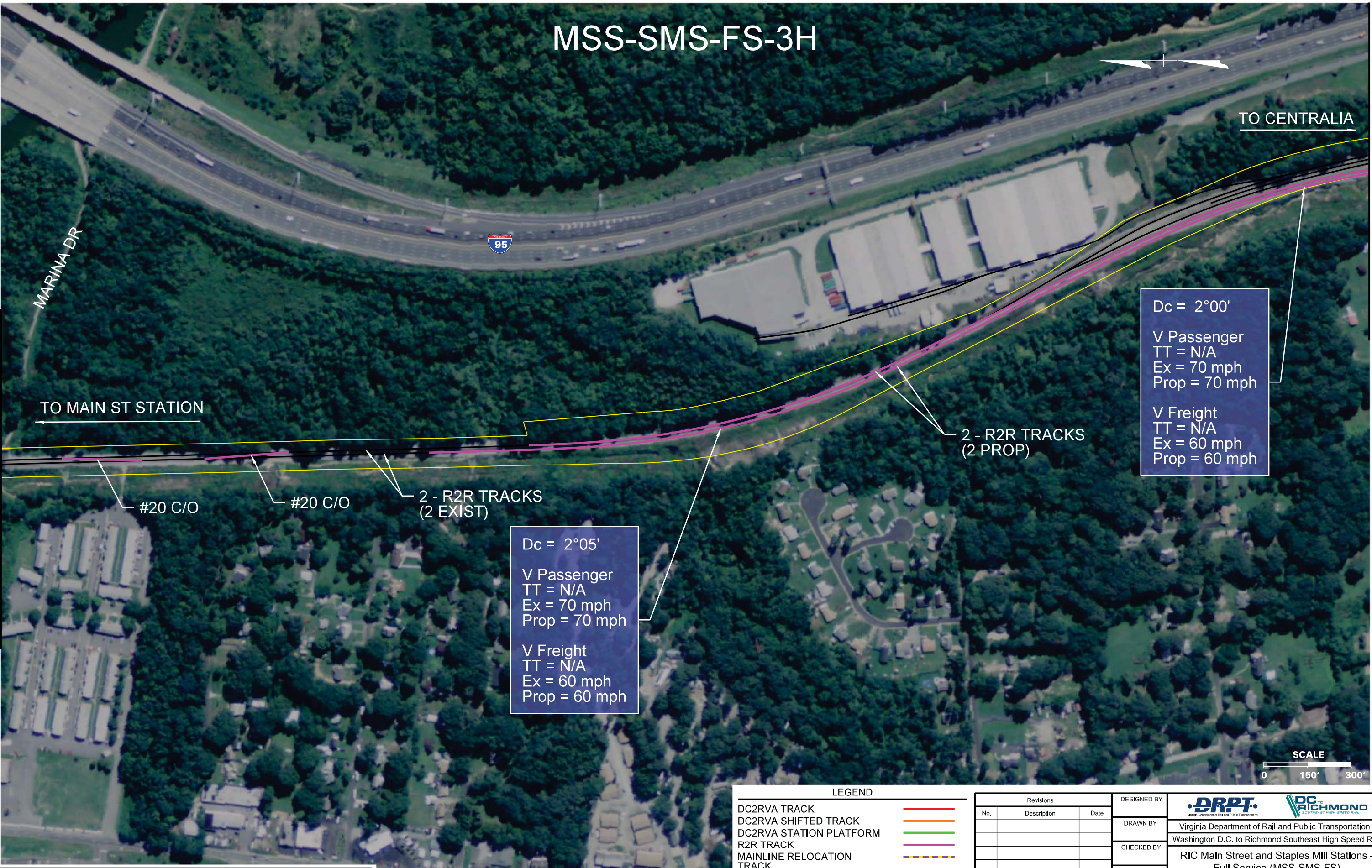
THESE PLANS ARE UNFINISHED AND UNAPPROVED AND ARE NOT TO BE USED FOR ANY TYPE OF CONSTRUCTION OR THE ACQUISITION OF RIGHT OF WAY.



MSS-SMS-FS-3H

MATCHLINE SEE SHEET MSS-SMS-FS-3G

MATCHLINE SEE SHEET MSS-SMS-FS-3I



Dc = 2°00'  
V Passenger  
TT = N/A  
Ex = 70 mph  
Prop = 70 mph  
  
V Freight  
TT = N/A  
Ex = 60 mph  
Prop = 60 mph

Dc = 2°05'  
V Passenger  
TT = N/A  
Ex = 70 mph  
Prop = 70 mph  
  
V Freight  
TT = N/A  
Ex = 60 mph  
Prop = 60 mph

LEGEND	
DC2RVA TRACK	<span style="color: red;">—</span>
DC2RVA SHIFTED TRACK	<span style="color: orange;">—</span>
DC2RVA STATION PLATFORM	<span style="color: green;">—</span>
R2R TRACK	<span style="color: purple;">—</span>
MAINLINE RELOCATION TRACK	<span style="color: blue;">—</span>
RETIRED TRACK	<span style="color: lightblue;">—</span>
EXISTING TRACK	<span style="color: black;">—</span>
EXISTING R/W	<span style="color: yellow;">—</span>

Revisions		
No.	Description	Date

DESIGNED BY
DRAWN BY
CHECKED BY
DATE 11/17/2015
SCALE As Shown

<div><div></div><div></div></div> <div>Virginia Department of Rail and Public Transportation Washington D.C. to Richmond Southeast High Speed Rail</div>		
RIC Main Street and Staples Mill Stations - Full Service (MSS-SMS-FS) Alignment Option Mapbook		
PROJECT NO.	DRAWING NO. FF	SHEET NO. 21

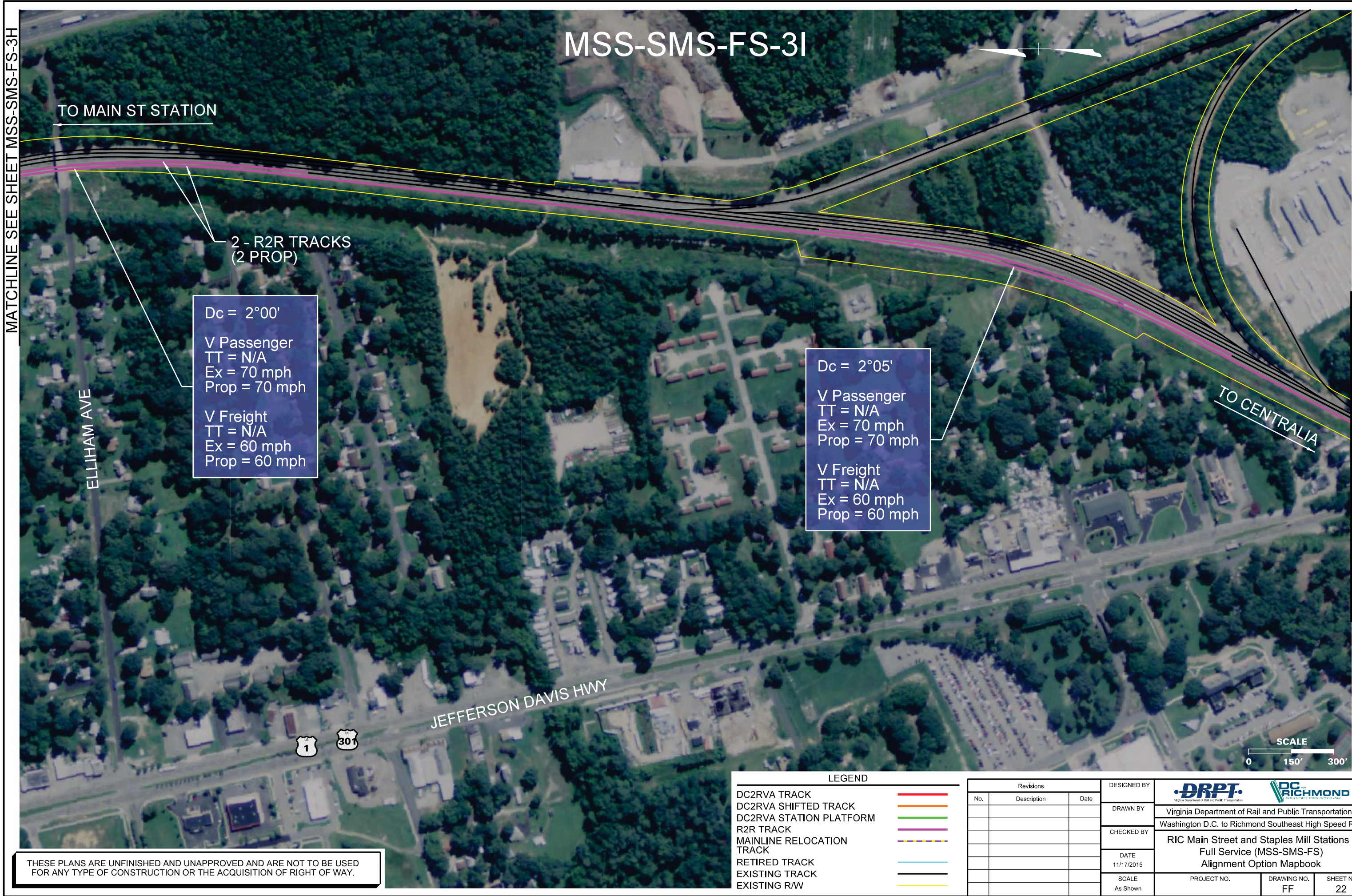
THESE PLANS ARE UNFINISHED AND UNAPPROVED AND ARE NOT TO BE USED FOR ANY TYPE OF CONSTRUCTION OR THE ACQUISITION OF RIGHT OF WAY.

Plotted by cpowell 11/13/2015 4:25:36 PM MSSM-FS-03H.dgn



MATCHLINE SEE SHEET MSS-SMS-FS-3H

11/13/2015 4:25:41 PM  
Plotted by cpowell  
MSSM-FS-031.dgn



MATCHLINE SEE SHEET MSS-SMS-FS-3J

THESE PLANS ARE UNFINISHED AND UNAPPROVED AND ARE NOT TO BE USED FOR ANY TYPE OF CONSTRUCTION OR THE ACQUISITION OF RIGHT OF WAY.

LEGEND

DC2RVA TRACK	
DC2RVA SHIFTED TRACK	
DC2RVA STATION PLATFORM	
R2R TRACK	
MAINLINE RELOCATION TRACK	
RETIRED TRACK	
EXISTING TRACK	
EXISTING R/W	

Revisions		
No.	Description	Date

DESIGNED BY	 Virginia Department of Rail and Public Transportation		
DRAWN BY	Washington D.C. to Richmond Southeast High Speed Rail		
CHECKED BY	RIC Main Street and Staples Mill Stations - Full Service (MSS-SMS-FS) Alignment Option Mapbook		
DATE	11/17/2015	PROJECT NO.	DRAWING NO.
SCALE	As Shown	FF	SHEET NO.
			22



MSS-SMS-FS-3J

PERRYMONT RD

CHESTER RD

195

#20 C/O

2 - R2R TRACKS  
(2 PROP)

TO MAIN ST STATION

TO CENTRALIA

JEFFERSON DAVIS HWY

KINGSDALE RD



SCALE  
0 150' 300'

LEGEND

- DC2RVA TRACK
- DC2RVA SHIFTED TRACK
- DC2RVA STATION PLATFORM
- R2R TRACK
- MAINLINE RELOCATION TRACK
- RETIRED TRACK
- EXISTING TRACK
- EXISTING R/W

Revisions		
No.	Description	Date

DESIGNED BY
DRAWN BY
CHECKED BY
DATE 11/17/2015
SCALE As Shown

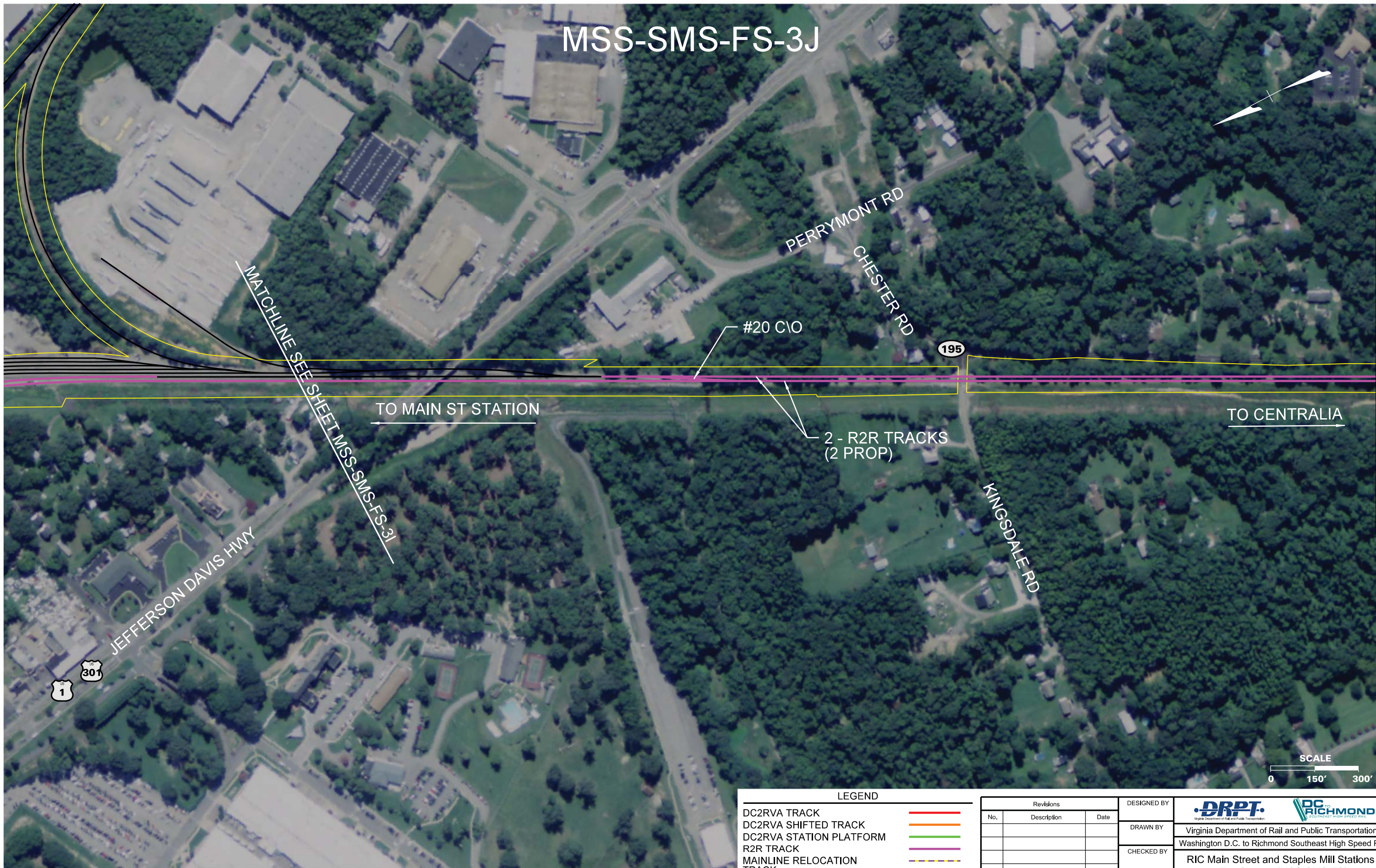


Virginia Department of Rail and Public Transportation

Washington D.C. to Richmond Southeast High Speed Rail

RIC Main Street and Staples Mill Stations - Full Service (MSS-SMS-FS) Alignment Option Mapbook

PROJECT NO.	DRAWING NO.	SHEET NO.
	FF	23



THESE PLANS ARE UNFINISHED AND UNAPPROVED AND ARE NOT TO BE USED FOR ANY TYPE OF CONSTRUCTION OR THE ACQUISITION OF RIGHT OF WAY.



MSS-SMS-FS-3K

MATCHLINE SEE SHEET MSS-SMS-FS-3J

TO MAIN ST STATION

2 - R2R TRACKS  
(2 PROP)

BRINKLEY RD

KINGSDALE RD

CHESTER RD

145

TO CENTRALIA

MATCHLINE SEE SHEET MSS-SMS-FS-3L

Dc = 2°30'

V Passenger  
TT = N/A  
Ex = 70 mph  
Prop = 70 mph

V Freight  
TT = N/A  
Ex = 60 mph  
Prop = 60 mph



THESE PLANS ARE UNFINISHED AND UNAPPROVED AND ARE NOT TO BE USED FOR ANY TYPE OF CONSTRUCTION OR THE ACQUISITION OF RIGHT OF WAY.

LEGEND

DC2RVA TRACK	
DC2RVA SHIFTED TRACK	
DC2RVA STATION PLATFORM	
R2R TRACK	
MAINLINE RELOCATION TRACK	
RETIRED TRACK	
EXISTING TRACK	
EXISTING R/W	

Revisions			DESIGNED BY
No.	Description	Date	
			DRAWN BY
			CHECKED BY
			DATE
			SCALE

Virginia Department of Rail and Public Transportation

Richmond, Virginia

Washington D.C. to Richmond Southeast High Speed Rail

RIC Main Street and Staples Mill Stations - Full Service (MSS-SMS-FS) Alignment Option Mapbook

PROJECT NO.	DRAWING NO.	SHEET NO.
	FF	24

11/13/2015 4:25:53 PM  
Plotted by cpowell  
MSSM-FS-3K.dgn



# MSS-SMS-FS-3L

CHESTER RD

145

288

WORLD WAR II VETERANS MEMORIAL HWY

MATCHLINE SEE SHEET MSS-SMS-FS-3M

MATCHLINE SEE SHEET MSS-SMS-FS-3K

TO MAIN ST STATION

2 - R2R TRACKS  
(2 PROP)

Dc = 4°15'  
V Passenger  
TT = N/A  
Ex = 50 mph  
Prop = 50 mph  
  
V Freight  
TT = N/A  
Ex = 40 mph  
Prop = 40 mph

#20 C/O

TO CENTRALIA

EXISTING C/O

OLD LN

Dc = 2°30'  
V Passenger  
TT = N/A  
Ex = 70 mph  
Prop = 70 mph  
  
V Freight  
TT = N/A  
Ex = 60 mph  
Prop = 60 mph



TO ACCA YARD



LEGEND	
DC2RVA TRACK	<span style="color: red;">—</span>
DC2RVA SHIFTED TRACK	<span style="color: orange;">—</span>
DC2RVA STATION PLATFORM	<span style="color: green;">—</span>
R2R TRACK	<span style="color: purple;">—</span>
MAINLINE RELOCATION TRACK	<span style="color: blue;">—</span>
RETIRED TRACK	<span style="color: lightblue;">—</span>
EXISTING TRACK	<span style="color: black;">—</span>
EXISTING R/W	<span style="color: yellow;">—</span>

Revisions		
No.	Description	Date

DESIGNED BY
DRAWN BY
CHECKED BY
DATE 11/17/2015
SCALE As Shown



Virginia Department of Rail and Public Transportation  
Washington D.C. to Richmond Southeast High Speed Rail

RIC Main Street and Staples Mill Stations -  
Full Service (MSS-SMS-FS)  
Alignment Option Mapbook

PROJECT NO.	DRAWING NO. FF	SHEET NO. 25
-------------	-------------------	-----------------

THESE PLANS ARE UNFINISHED AND UNAPPROVED AND ARE NOT TO BE USED FOR ANY TYPE OF CONSTRUCTION OR THE ACQUISITION OF RIGHT OF WAY.

11/13/2015 4:26:00 PM  
Plotted by cpowell  
MSSM-FS-03L.dgn



MSS-SMS-FS-3M



MATCHLINE SEE SHEET MSS-SMS-FS-3L

2 - R2R TRACKS  
(2 PROP)

#15 T/O  
TO MAIN ST STATION

#20 C/O  
#20 C/O  
#20 C/O

#20 C/O  
TO ACCA YARD

CHESTER RD 144

TO PETERSBURG

145

CENTRALIA RD

SCALE  
0 150' 300'

LEGEND

- DC2RVA TRACK
- DC2RVA SHIFTED TRACK
- DC2RVA STATION PLATFORM
- R2R TRACK
- MAINLINE RELOCATION TRACK
- RETIRED TRACK
- EXISTING TRACK
- EXISTING R/W

Revisions		
No.	Description	Date

DESIGNED BY	<div><div>DRPT</div><div>Virginia Department of Rail and Public Transportation</div><div>Washington D.C. to Richmond Southeast High Speed Rail</div></div>		
DRAWN BY			
CHECKED BY			
DATE	11/17/2015		
SCALE	As Shown		
PROJECT NO.	DRAWING NO.	SHEET NO.	
	FF	26	

THESE PLANS ARE UNFINISHED AND UNAPPROVED AND ARE NOT TO BE USED FOR ANY TYPE OF CONSTRUCTION OR THE ACQUISITION OF RIGHT OF WAY.

11/13/2015 4:26:07 PM  
MSSM-FS-03M.dgn  
Plotted by cpowell