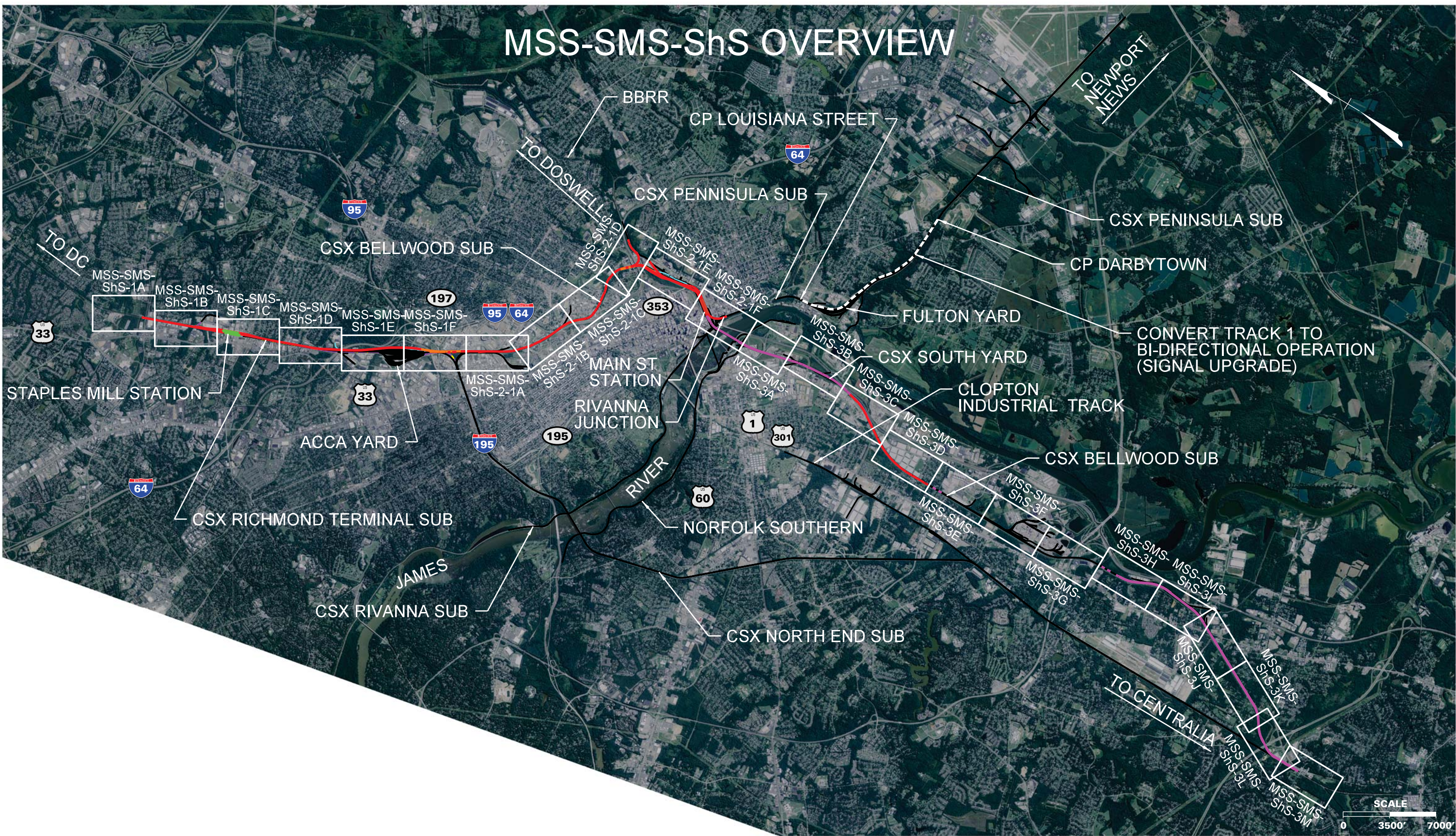


MSS-SMS-ShS OVERVIEW



THESE PLANS ARE UNFINISHED AND UNAPPROVED AND ARE NOT TO BE USED FOR ANY TYPE OF CONSTRUCTION OR THE ACQUISITION OF RIGHT OF WAY.

LEGEND

DC2RVA TRACK	
DC2RVA SHIFTED TRACK	
DC2RVA STATION PLATFORM	
R2R TRACK	
MAINLINE RELOCATION TRACK	
RETIRED TRACK	
EXISTING TRACK	
EXISTING R/W	

Revisions		
No.	Description	Date

DESIGNED BY
DRAWN BY
CHECKED BY
DATE
SCALE

 Virginia Department of Rail and Public Transportation		
Washington D.C. to Richmond Southeast High Speed Rail		
RIC Main Street and Staples Mill Stations - Shared Service (MSS-SMS-ShS) Alignment Option Mapbook		
PROJECT NO.	DRAWING NO.	SHEET NO.
	HH	1

MSS-SMS-ShS-1A





THESE PLANS ARE UNFINISHED AND UNAPPROVED AND ARE NOT TO BE USED FOR ANY TYPE OF CONSTRUCTION OR THE ACQUISITION OF RIGHT OF WAY.

LEGEND		
DC2RVA TRACK		
DC2RVA SHIFTED TRACK		
DC2RVA STATION PLATFORM		
R2R TRACK		
MAINLINE RELOCATION TRACK		
RETIRED TRACK		
EXISTING TRACK		
EXISTING R/W		

Revisions		
No.	Description	Date

DESIGNED BY
DRAWN BY
CHECKED BY
DATE
SCALE



Virginia Department of Rail and Public Transportation

Washington D.C. to Richmond Southeast High Speed Rail

RIC Main Street and Staples Mill Stations - Shared Service (MSS-SMS-ShS) Alignment Option Mapbook

PROJECT NO.	DRAWING NO.	SHEET NO.
	HH	2

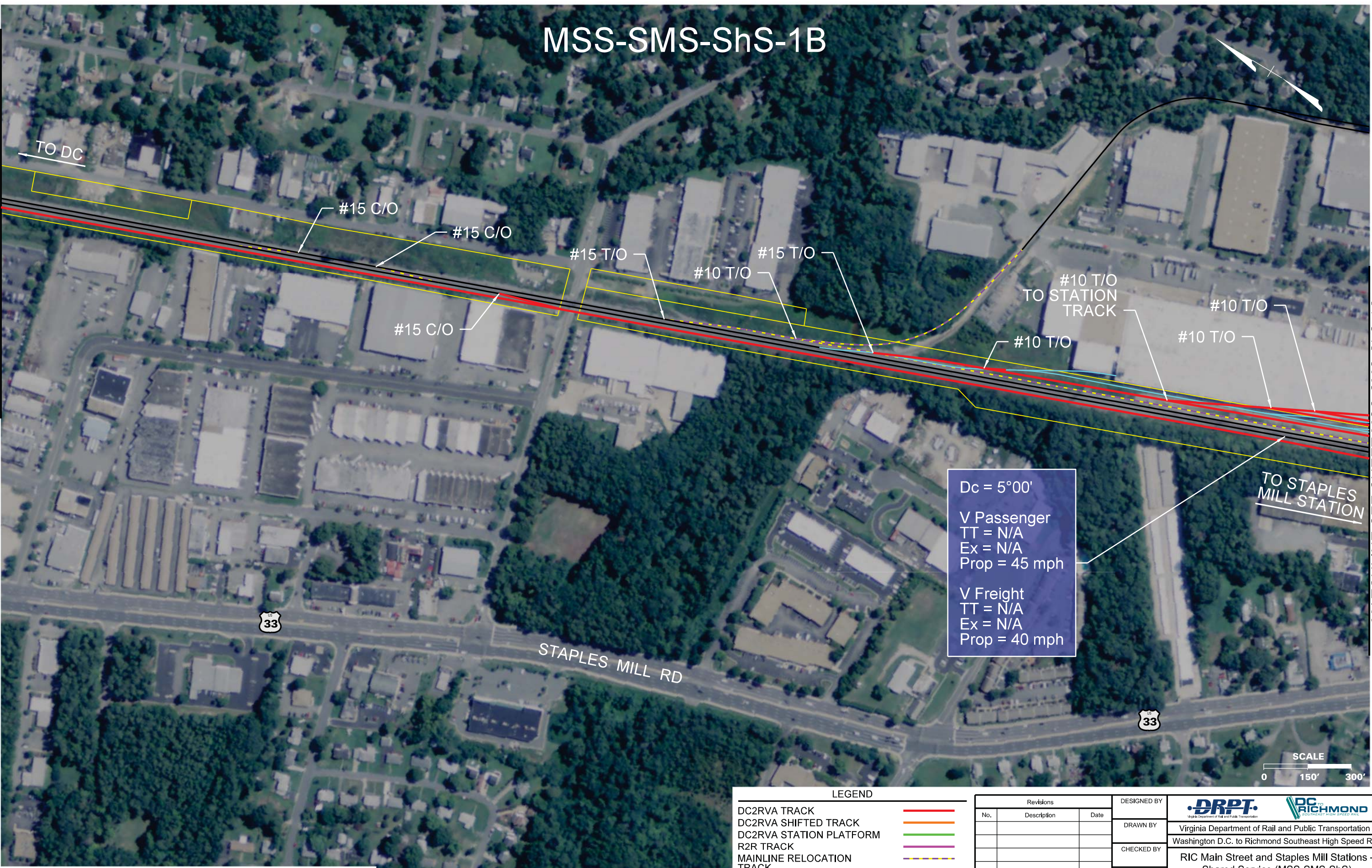
Plotted by cpowell 11/13/2015 4:35:31 PM MSS-SMS-ShS-01A.dgn

MATCHLINE SEE SHEET MSS-SMS-ShS-1B

MSS-SMS-ShS-1B

MATCHLINE SEE SHEET MSS-SMS-ShS-1A

MATCHLINE SEE SHEET MSS-SMS-ShS-1C



THESE PLANS ARE UNFINISHED AND UNAPPROVED AND ARE NOT TO BE USED FOR ANY TYPE OF CONSTRUCTION OR THE ACQUISITION OF RIGHT OF WAY.

LEGEND

DC2RVA TRACK

DC2RVA SHIFTED TRACK

DC2RVA STATION PLATFORM

R2R TRACK

MAINLINE RELOCATION TRACK

RETIRED TRACK

EXISTING TRACK

EXISTING R/W

Revisions

No.	Description	Date

DESIGNED BY

DRAWN BY

CHECKED BY

DATE

SCALE

DRPT

Virginia Department of Rail and Public Transportation

RIC

Richmond

Richmond Southeast High Speed Rail

Virginia Department of Rail and Public Transportation

Washington D.C. to Richmond Southeast High Speed Rail

RIC Main Street and Staples Mill Stations - Shared Service (MSS-SMS-ShS)

Alignment Option Mapbook

PROJECT NO.

DRAWING NO.

SHEET NO.

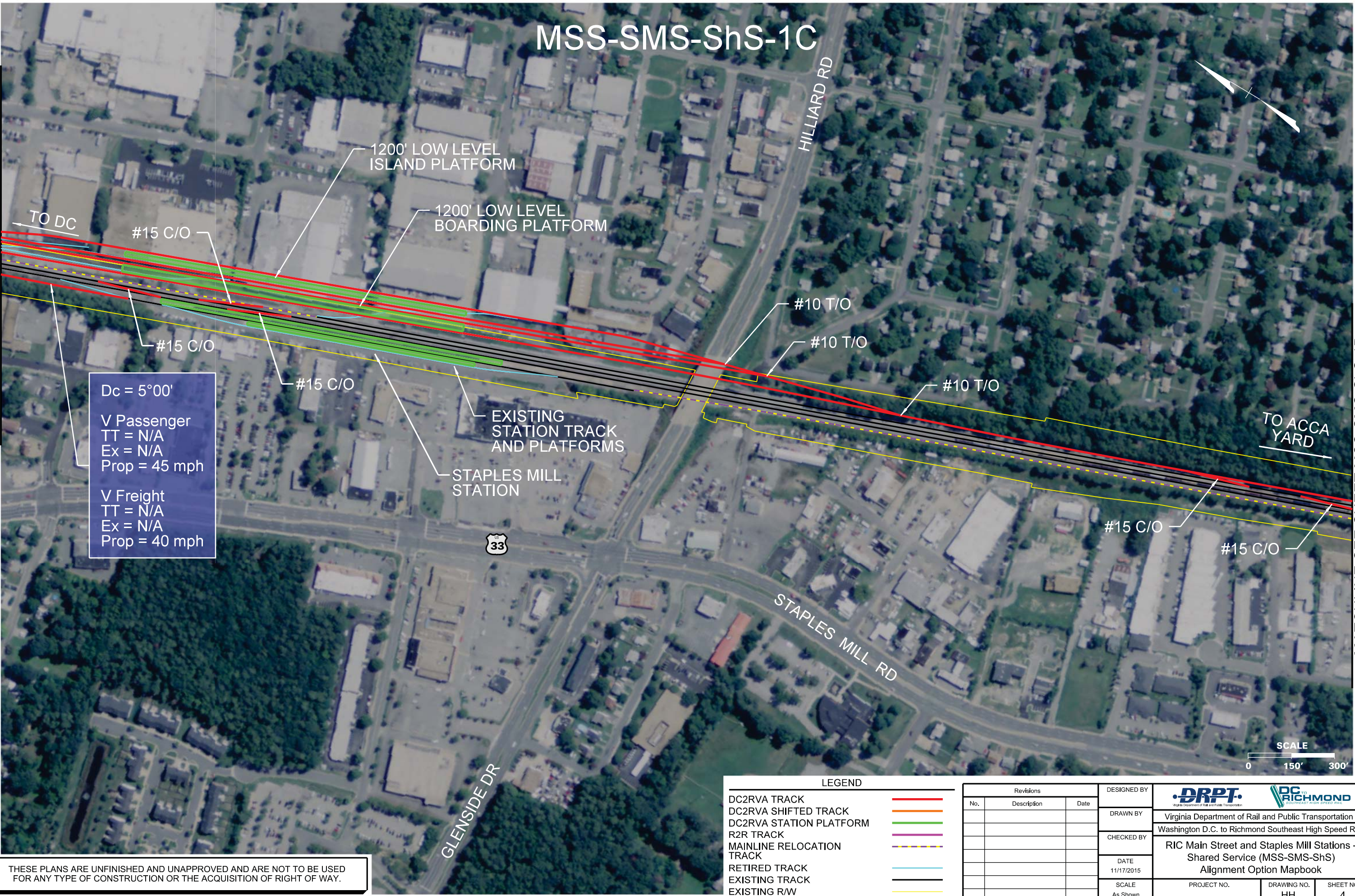
HH

3

MSS-SMS-ShS-1C

MATCHLINE SEE SHEET MSS-SMS-ShS-1B

MATCHLINE SEE SHEET MSS-SMS-ShS-1D



Dc = 5°00'
V Passenger
TT = N/A
Ex = N/A
Prop = 45 mph

V Freight
TT = N/A
Ex = N/A
Prop = 40 mph

THESE PLANS ARE UNFINISHED AND UNAPPROVED AND ARE NOT TO BE USED FOR ANY TYPE OF CONSTRUCTION OR THE ACQUISITION OF RIGHT OF WAY.

LEGEND	
DC2RVA TRACK	
DC2RVA SHIFTED TRACK	
DC2RVA STATION PLATFORM	
R2R TRACK	
MAINLINE RELOCATION TRACK	
RETIRED TRACK	
EXISTING TRACK	
EXISTING R/W	

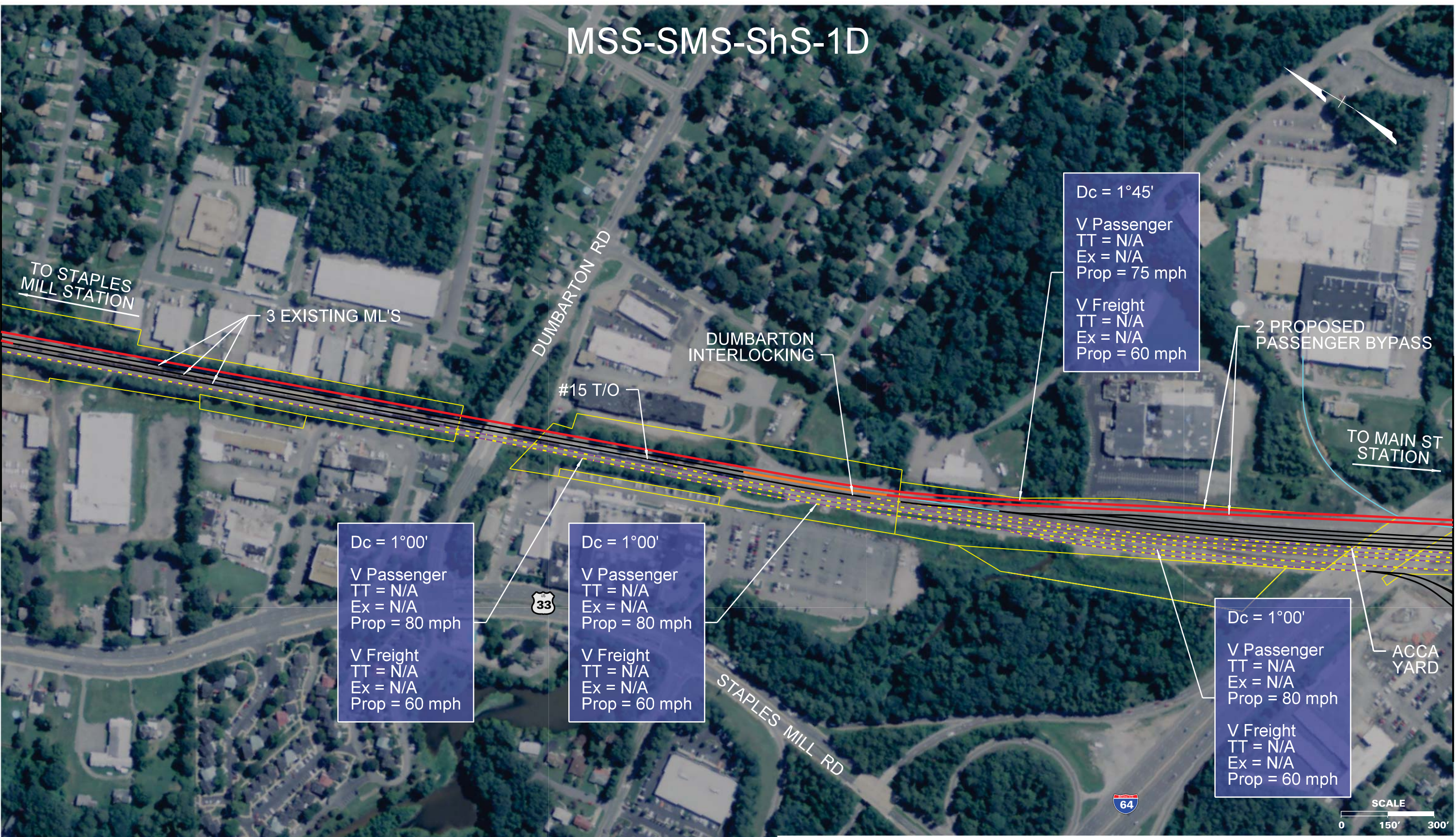
Revisions		
No.	Description	Date

DESIGNED BY	 Virginia Department of Rail and Public Transportation		
DRAWN BY	Washington D.C. to Richmond Southeast High Speed Rail		
CHECKED BY	RIC Main Street and Staples Mill Stations - Shared Service (MSS-SMS-ShS) Alignment Option Mapbook		
DATE	11/17/2015	PROJECT NO.	DRAWING NO.
SCALE	As Shown	HH	SHEET NO.
			4

MSS-SMS-ShS-1D

MATCHLINE SEE SHEET MSS-SMS-ShS-1C

MATCHLINE SEE SHEET MSS-SMS-ShS-1E



THESE PLANS ARE UNFINISHED AND UNAPPROVED AND ARE NOT TO BE USED FOR ANY TYPE OF CONSTRUCTION OR THE ACQUISITION OF RIGHT OF WAY.

LEGEND

DC2RVA TRACK	Red line
DC2RVA SHIFTED TRACK	Orange line
DC2RVA STATION PLATFORM	Green line
R2R TRACK	Purple line
MAINLINE RELOCATION TRACK	Yellow line
RETIRED TRACK	Blue line
EXISTING TRACK	Black line
EXISTING R/W	Yellow line

Revisions		
No.	Description	Date

DESIGNED BY	DRPT Virginia Department of Rail and Public Transportation Washington D.C. to Richmond Southeast High Speed Rail
DRAWN BY	
CHECKED BY	
DATE	11/17/2015
SCALE	As Shown

PROJECT NO.	DRAWING NO.	SHEET NO.
	HH	5

MSS-SMS-ShS-1E

Dc = 1°00'
V Passenger
TT = N/A
Ex = N/A
Prop = 80 mph

V Freight
TT = N/A
Ex = N/A
Prop = 60 mph

Dc = 1°00'
V Passenger
TT = N/A
Ex = N/A
Prop = 80 mph

V Freight
TT = N/A
Ex = N/A
Prop = 60 mph

Dc = 3°00'
V Passenger
TT = N/A
Ex = N/A
Prop = 60 mph

V Freight
TT = N/A
Ex = N/A
Prop = 55 mph

Dc = 1°00'
V Passenger
TT = N/A
Ex = N/A
Prop = 80 mph

V Freight
TT = N/A
Ex = N/A
Prop = 60 mph

MATCHLINE SEE SHEET MSS-SMS-ShS-1D

MATCHLINE SEE SHEET MSS-SMS-ShS-1F

TO STAPLES
MILL STATION

2 PROPOSED PASSENGER
BYPASS

ACCA YARD

CSX BIDS /
TRANSLOAD
FACILITY

TO MAIN ST
STATION

BRYAN PARK MAINTENANCE FACILITY



THESE PLANS ARE UNFINISHED AND UNAPPROVED AND ARE NOT TO BE USED FOR ANY TYPE OF CONSTRUCTION OR THE ACQUISITION OF RIGHT OF WAY.

LEGEND	
DC2RVA TRACK	
DC2RVA SHIFTED TRACK	
DC2RVA STATION PLATFORM	
R2R TRACK	
MAINLINE RELOCATION TRACK	
RETIRED TRACK	
EXISTING TRACK	
EXISTING R/W	

Revisions		
No.	Description	Date

DESIGNED BY
DRAWN BY
CHECKED BY
DATE 11/17/2015
SCALE As Shown

Virginia Department of Rail and Public Transportation
Washington D.C. to Richmond Southeast High Speed Rail

RIC Main Street and Staples Mill Stations -
Shared Service (MSS-SMS-ShS)
Alignment Option Mapbook

PROJECT NO.	DRAWING NO. HH	SHEET NO. 6
-------------	-------------------	----------------

Plotted by cpowell 11/13/2015 4:35:53 PM
MSS-SMS-ShS-1E.dgn

MSS-SMS-ShS-1F

MATCHLINE SEE SHEET MSS-SMS-ShS-1E

MATCHLINE SEE SHEET MSS-SMS-ShS-2-1A

Dc = 1°00'
V Passenger
TT = N/A
Ex = N/A
Prop = 80 mph

V Freight
TT = N/A
Ex = N/A
Prop = 60 mph

Dc = 1°00'
V Passenger
TT = N/A
Ex = N/A
Prop = 80 mph

V Freight
TT = N/A
Ex = N/A
Prop = 60 mph

Dc = 6°15'
V Passenger
TT = N/A
Ex = N/A
Prop = 30 mph

V Freight
TT = N/A
Ex = N/A
Prop = 30 mph

Dc = 7°30'
V Passenger
TT = N/A
Ex = N/A
Prop = 20 mph

V Freight
TT = N/A
Ex = N/A
Prop = 20 mph

Dc = 2°00'
V Passenger
TT = N/A
Ex = N/A
Prop = 70 mph

V Freight
TT = N/A
Ex = N/A
Prop = 60 mph

Dc = 5°00'
V Passenger
TT = N/A
Ex = N/A
Prop = 45 mph

V Freight
TT = N/A
Ex = N/A
Prop = 40 mph

Dc = 7°30'
V Passenger
TT = N/A
Ex = N/A
Prop = 20 mph

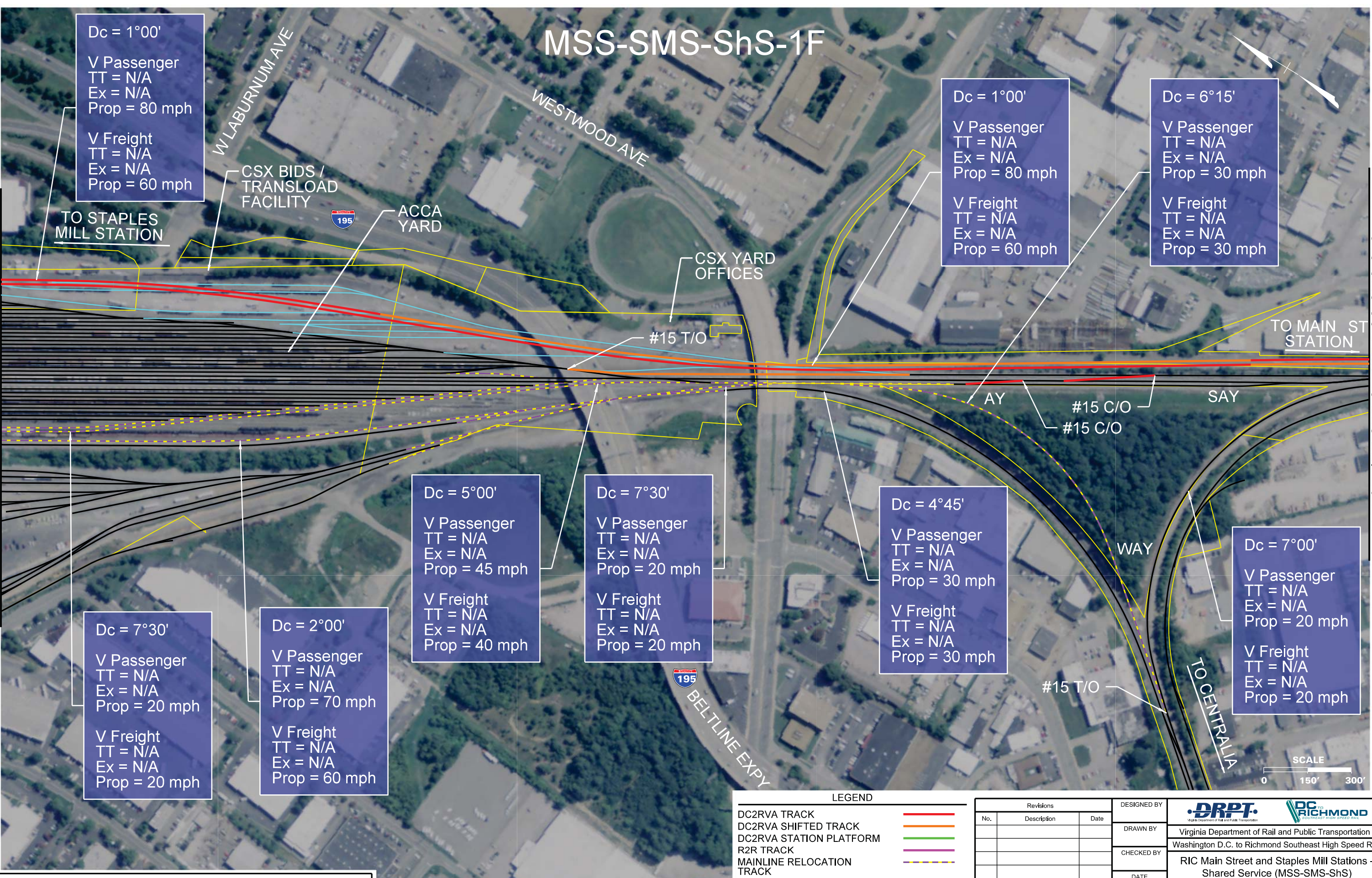
V Freight
TT = N/A
Ex = N/A
Prop = 20 mph

Dc = 4°45'
V Passenger
TT = N/A
Ex = N/A
Prop = 30 mph

V Freight
TT = N/A
Ex = N/A
Prop = 30 mph

Dc = 7°00'
V Passenger
TT = N/A
Ex = N/A
Prop = 20 mph

V Freight
TT = N/A
Ex = N/A
Prop = 20 mph



THESE PLANS ARE UNFINISHED AND UNAPPROVED AND ARE NOT TO BE USED FOR ANY TYPE OF CONSTRUCTION OR THE ACQUISITION OF RIGHT OF WAY.

LEGEND

DC2RVA TRACK	Red line
DC2RVA SHIFTED TRACK	Orange line
DC2RVA STATION PLATFORM	Green line
R2R TRACK	Purple line
MAINLINE RELOCATION TRACK	Yellow dashed line
RETIRED TRACK	Blue line
EXISTING TRACK	Black line
EXISTING R/W	Yellow line

Revisions		
No.	Description	Date

DESIGNED BY	
DRAWN BY	
CHECKED BY	
DATE	11/17/2015
SCALE	As Shown

DRPT Virginia Department of Rail and Public Transportation		RIC Main Street and Staples Mill Stations - Shared Service (MSS-SMS-ShS) Alignment Option Mapbook
Washington D.C. to Richmond Southeast High Speed Rail		
PROJECT NO.	DRAWING NO. HH	SHEET NO. 7

Plotted by cpowell 11/13/2015 4:35:59 PM
MSS-SMS-ShS-1F.dgn

MSS-SMS-ShS-2-1A

MATCHLINE SEE SHEET MSS-SMS-ShS-1F

TO ACCA YARD

#15 C/O

HERMITAGE RD

OUT OF SERVICE
TRACK TO BE
REHABILITATED

MATCHLINE SEE SHEET MSS-SMS-ShS-2-1B

TO MAIN ST
STATION

Dc = 2°15'

V Passenger
TT = 40 mph
Ex = 40 mph
Prop = 40 mph

V Freight
TT = 25 mph
Ex = 30 mph
Prop = 30 mph



LEGEND

DC2RVA TRACK	
DC2RVA SHIFTED TRACK	
DC2RVA STATION PLATFORM	
R2R TRACK	
MAINLINE RELOCATION TRACK	
RETIRED TRACK	
EXISTING TRACK	
EXISTING R/W	

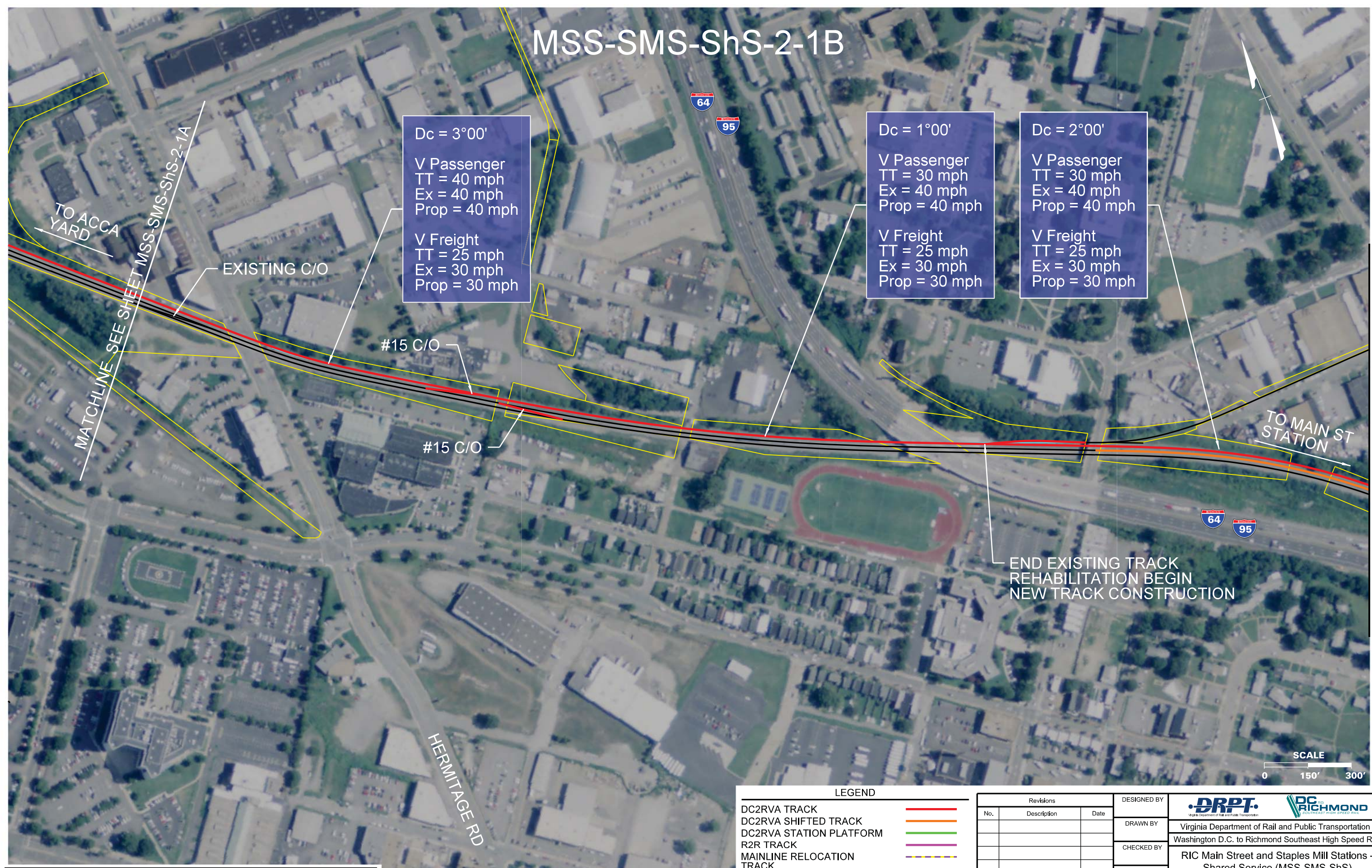
Revisions		
No.	Description	Date

DESIGNED BY	 Virginia Department of Rail and Public Transportation Washington D.C. to Richmond Southeast High Speed Rail
DRAWN BY	
CHECKED BY	
DATE	11/17/2015
SCALE	As Shown

PROJECT NO.	DRAWING NO.	SHEET NO.
	HH	8

THESE PLANS ARE UNFINISHED AND UNAPPROVED AND ARE NOT TO BE USED FOR ANY TYPE OF CONSTRUCTION OR THE ACQUISITION OF RIGHT OF WAY.

MSS-SMS-ShS-2-1B



Dc = 3°00'

V Passenger
TT = 40 mph
Ex = 40 mph
Prop = 40 mph

V Freight
TT = 25 mph
Ex = 30 mph
Prop = 30 mph

Dc = 1°00'

V Passenger
TT = 30 mph
Ex = 40 mph
Prop = 40 mph

V Freight
TT = 25 mph
Ex = 30 mph
Prop = 30 mph

Dc = 2°00'

V Passenger
TT = 30 mph
Ex = 40 mph
Prop = 40 mph

V Freight
TT = 25 mph
Ex = 30 mph
Prop = 30 mph

THESE PLANS ARE UNFINISHED AND UNAPPROVED AND ARE NOT TO BE USED FOR ANY TYPE OF CONSTRUCTION OR THE ACQUISITION OF RIGHT OF WAY.

LEGEND	
DC2RVA TRACK	
DC2RVA SHIFTED TRACK	
DC2RVA STATION PLATFORM	
R2R TRACK	
MAINLINE RELOCATION TRACK	
RETIRED TRACK	
EXISTING TRACK	
EXISTING R/W	

Revisions		
No.	Description	Date

DESIGNED BY	 Virginia Department of Rail and Public Transportation		
DRAWN BY	Washington D.C. to Richmond Southeast High Speed Rail		
CHECKED BY	RIC Main Street and Staples Mill Stations - Shared Service (MSS-SMS-ShS) Alignment Option Mapbook		
DATE	11/17/2015	PROJECT NO.	DRAWING NO.
SCALE	As Shown	HH	SHEET NO.
			9

Plotted by cpowell 11/13/2015 4:35:11 PM
MSS-SMS-ShS-02-1B.dgn

MSS-SMS-ShS-2-1C

MATCHLINE SEE SHEET MSS-SMS-ShS-2-1B

CHAMBERLAYNE AVE

BROOK RD

TO ACCA YARD



Dc = 3°30'
V Passenger
TT = 30 mph
Ex = 55 mph
Prop = 55 mph
V Freight
TT = 25 mph
Ex = 45 mph
Prop = 45 mph

Dc = 6°00'
V Passenger
TT = 30 mph
Ex = 40 mph
Prop = 40 mph
V Freight
TT = 25 mph
Ex = 30 mph
Prop = 30 mph

Dc = 4°00'
V Passenger
TT = 30 mph
Ex = 50 mph
Prop = 50 mph
V Freight
TT = 25 mph
Ex = 45 mph
Prop = 45 mph

Dc = 4°00'
V Passenger
TT = 30 mph
Ex = 50 mph
Prop = 50 mph
V Freight
TT = 25 mph
Ex = 45 mph
Prop = 45 mph

#15 C/O

#15 C/O

MATCHLINE SEE SHEET MSS-SMS-ShS-2-1D

TO MAIN ST
STATION

SCALE

0 150' 300'

LEGEND

DC2RVA TRACK	
DC2RVA SHIFTED TRACK	
DC2RVA STATION PLATFORM	
R2R TRACK	
MAINLINE RELOCATION TRACK	
RETIRED TRACK	
EXISTING TRACK	
EXISTING R/W	

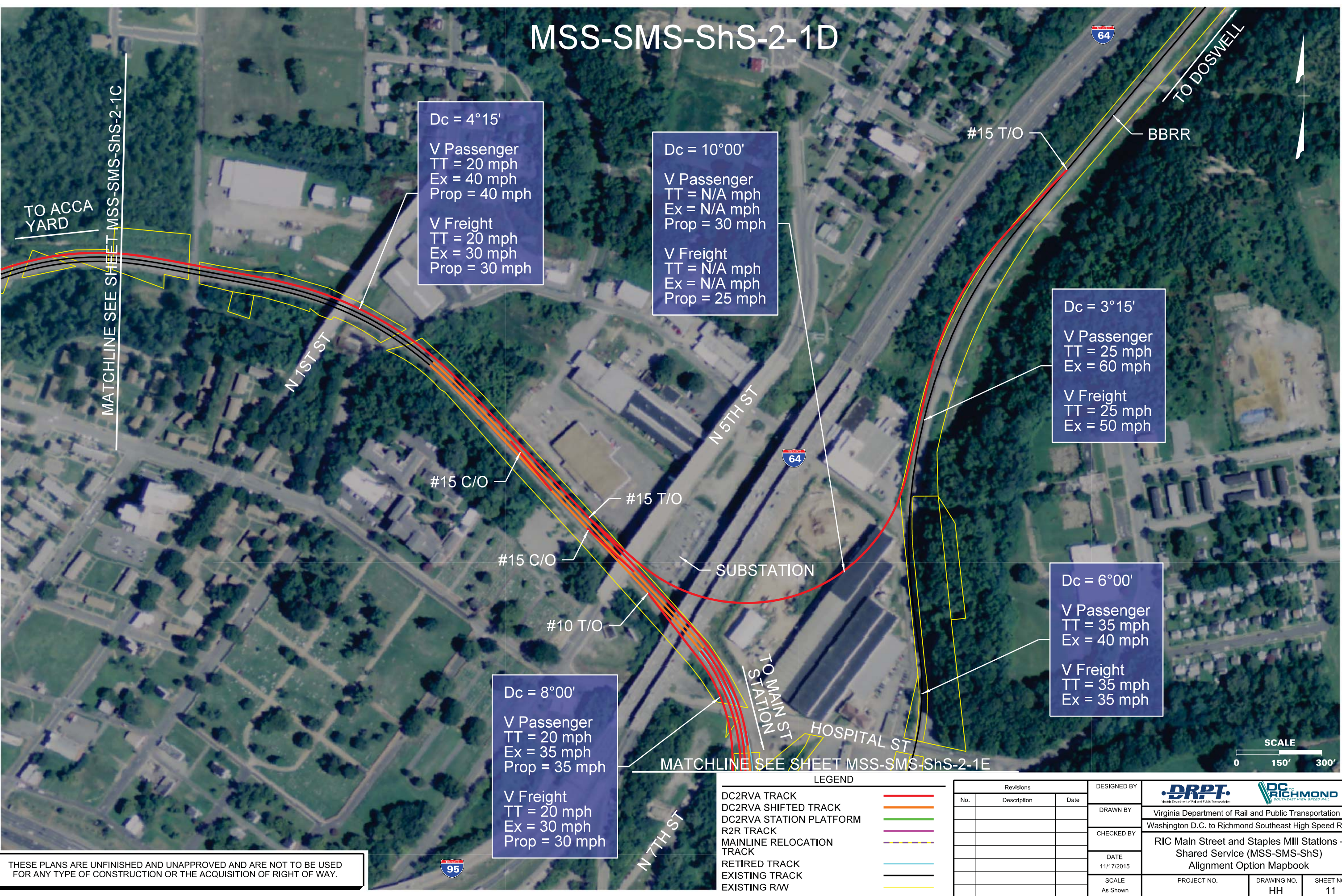
Revisions		
No.	Description	Date

DESIGNED BY
DRAWN BY
CHECKED BY
DATE 11/17/2015
SCALE As Shown

 Virginia Department of Rail and Public Transportation		
Washington D.C. to Richmond Southeast High Speed Rail		
RIC Main Street and Staples Mill Stations - Shared Service (MSS-SMS-ShS) Alignment Option Mapbook		
PROJECT NO.	DRAWING NO. HH	SHEET NO. 10

THESE PLANS ARE UNFINISHED AND UNAPPROVED AND ARE NOT TO BE USED FOR ANY TYPE OF CONSTRUCTION OR THE ACQUISITION OF RIGHT OF WAY.

MSS-SMS-ShS-2-1D



MATCHLINE SEE SHEET MSS-SMS-ShS-2-1C

TO ACCA
YARD

N 1ST ST

N 5TH ST

TO MAIN ST
STATION

HOSPITAL ST

N 7TH ST

TO DOSWELL

BBRR

#15 T/O

#15 C/O

#15 T/O

#15 C/O

#10 T/O

SUBSTATION

MATCHLINE SEE SHEET MSS-SMS-ShS-2-1E

Dc = 4°15'
V Passenger
TT = 20 mph
Ex = 40 mph
Prop = 40 mph
V Freight
TT = 20 mph
Ex = 30 mph
Prop = 30 mph

Dc = 10°00'
V Passenger
TT = N/A mph
Ex = N/A mph
Prop = 30 mph
V Freight
TT = N/A mph
Ex = N/A mph
Prop = 25 mph

Dc = 3°15'
V Passenger
TT = 25 mph
Ex = 60 mph
V Freight
TT = 25 mph
Ex = 50 mph

Dc = 6°00'
V Passenger
TT = 35 mph
Ex = 40 mph
V Freight
TT = 35 mph
Ex = 35 mph

Dc = 8°00'
V Passenger
TT = 20 mph
Ex = 35 mph
Prop = 35 mph
V Freight
TT = 20 mph
Ex = 30 mph
Prop = 30 mph



THESE PLANS ARE UNFINISHED AND UNAPPROVED AND ARE NOT TO BE USED FOR ANY TYPE OF CONSTRUCTION OR THE ACQUISITION OF RIGHT OF WAY.

LEGEND

- DC2RVA TRACK
- DC2RVA SHIFTED TRACK
- DC2RVA STATION PLATFORM
- R2R TRACK
- MAINLINE RELOCATION TRACK
- RETIRED TRACK
- EXISTING TRACK
- EXISTING R/W

Revisions		
No.	Description	Date

DESIGNED BY
DRAWN BY
CHECKED BY
DATE 11/17/2015
SCALE As Shown

Virginia Department of Rail and Public Transportation
Washington D.C. to Richmond Southeast High Speed Rail

RIC Main Street and Staples Mill Stations - Shared Service (MSS-SMS-ShS) Alignment Option Mapbook

PROJECT NO.	DRAWING NO. HH	SHEET NO. 11
-------------	-------------------	-----------------

MSS-SMS-ShS-2-1E

Dc = 5°00'
V Passenger
TT = N/A
Ex = N/A
Prop = 45 mph

V Freight
TT = N/A
Ex = N/A
Prop = 40 mph

Dc = 5°00'
V Passenger
TT = N/A
Ex = N/A
Prop = 45 mph

V Freight
TT = N/A
Ex = N/A
Prop = 40 mph

Dc = 5°30'
V Passenger
TT = 15 mph
Ex = 45 mph
Prop = 45 mph

V Freight
TT = 15 mph
Ex = 40 mph
Prop = 40 mph

OLIVER HILL WAY

SHOCKOE CREEK
DRAINAGE STRUCTURE

BROWN ST

E BROAD ST

MATCHLINE SEE SHEET MSS-SMS-ShS-2-1D

MATCHLINE SEE SHEET MSS-SMS-ShS-2-1F

TO DOSWELL

TO ACCA YD

TO MAIN ST
STATION

MAINTENANCE FACILITY
THREE TRACKS CLEAR LENGTHS:
975TF, 1275TF & 1475TF

Dc = 2°45'
V Passenger
TT = 20 mph
Ex = N/A
Prop = 65 mph

V Freight
TT = 20 mph
Ex = N/A
Prop = 55 mph

Dc = 7°45'
V Passenger
TT = 10 mph
Ex = 35 mph
Prop = 35 mph

V Freight
TT = 10 mph
Ex = 30 mph
Prop = 30 mph

64

95

353

33

33

95

LEGEND

- DC2RVA TRACK
- DC2RVA SHIFTED TRACK
- DC2RVA STATION PLATFORM
- R2R TRACK
- MAINLINE RELOCATION TRACK
- RETIRED TRACK
- EXISTING TRACK
- EXISTING R/W

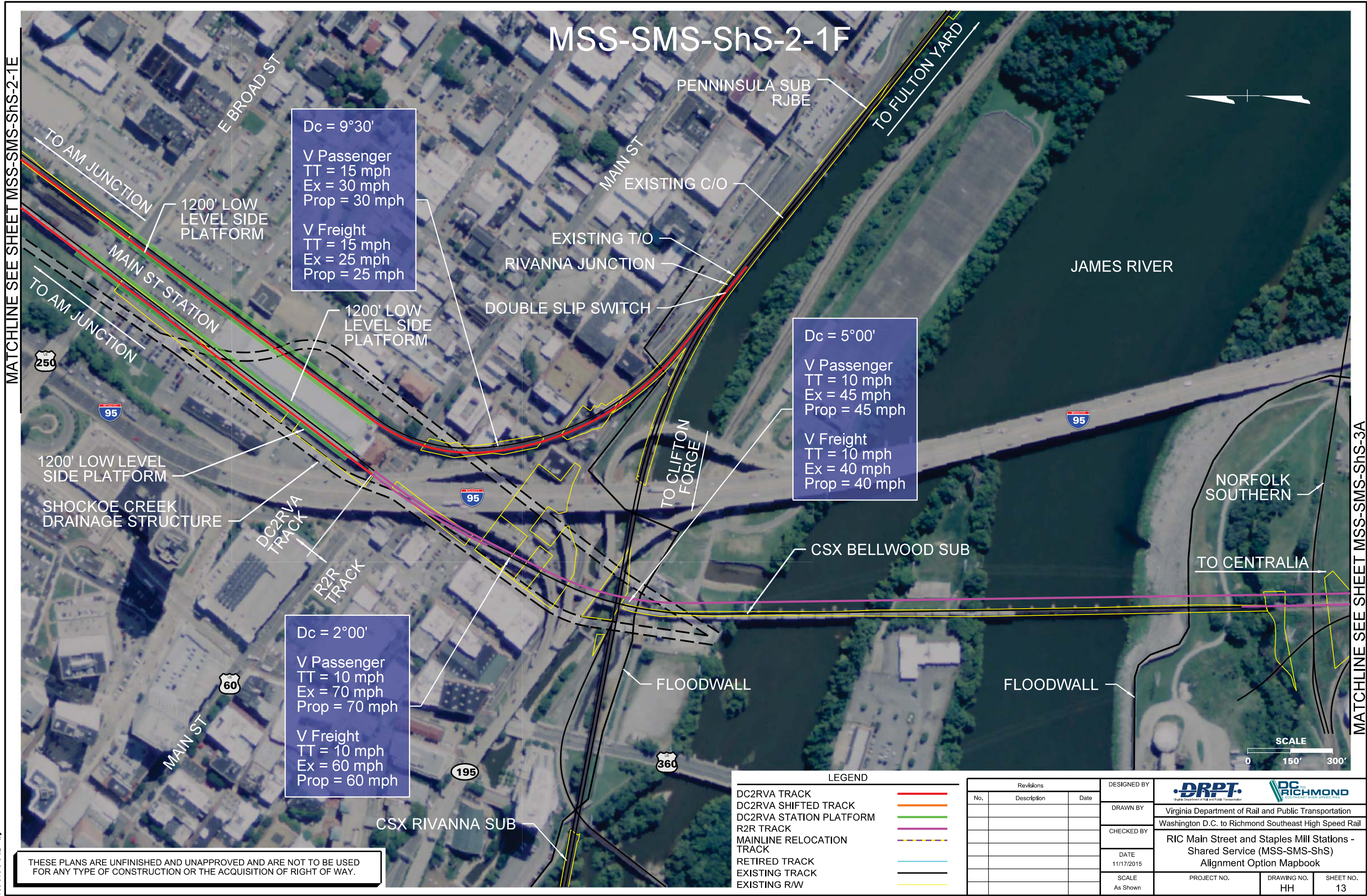
Revisions		
No.	Description	Date

DESIGNED BY	DRPT Virginia Department of Rail and Public Transportation		
DRAWN BY	Virginia Department of Rail and Public Transportation		
CHECKED BY	Washington D.C. to Richmond Southeast High Speed Rail		
DATE	11/17/2015		
SCALE	As Shown		
PROJECT NO.	DRAWING NO.	SHEET NO.	
	HH	12	

THESE PLANS ARE UNFINISHED AND UNAPPROVED AND ARE NOT TO BE USED FOR ANY TYPE OF CONSTRUCTION OR THE ACQUISITION OF RIGHT OF WAY.

Plotted by cpowell 11/13/2015 4:36:26 PM
MSS-SMS-ShS-2-1E.dgn

MATCHLINE SEE SHEET MSS-SMS-ShS-2-1E



MATCHLINE SEE SHEET MSS-SMS-ShS-3A

THESE PLANS ARE UNFINISHED AND UNAPPROVED AND ARE NOT TO BE USED FOR ANY TYPE OF CONSTRUCTION OR THE ACQUISITION OF RIGHT OF WAY.

LEGEND

DC2RVA TRACK	
DC2RVA SHIFTED TRACK	
DC2RVA STATION PLATFORM	
R2R TRACK	
MAINLINE RELOCATION TRACK	
RETIRED TRACK	
EXISTING TRACK	
EXISTING R/W	

Revisions		
No.	Description	Date

DESIGNED BY	 Virginia Department of Rail and Public Transportation		
DRAWN BY			
CHECKED BY			
DATE	11/17/2015		
SCALE	As Shown		
PROJECT NO.		DRAWING NO.	SHEET NO.
		HH	13

MSS-SMS-ShS-3A

JAMES RIVER



TO CENTRALIA

2 - R2R TRACKS
(1 EXIST AND 1 PROP)

#20 C/O

#20 C/O

#10 T/O

TO MAIN ST STATION

MATCHLINE SEE SHEET MSS-SMS-ShS-2-1F

MATCHLINE SEE SHEET MSS-SMS-ShS-3B

NORFOLK
SOUTHERN

E 4TH ST

MAURY ST

SCALE

0 150' 300'

LEGEND

DC2RVA TRACK	
DC2RVA SHIFTED TRACK	
DC2RVA STATION PLATFORM	
R2R TRACK	
MAINLINE RELOCATION TRACK	
RETIRED TRACK	
EXISTING TRACK	
EXISTING R/W	

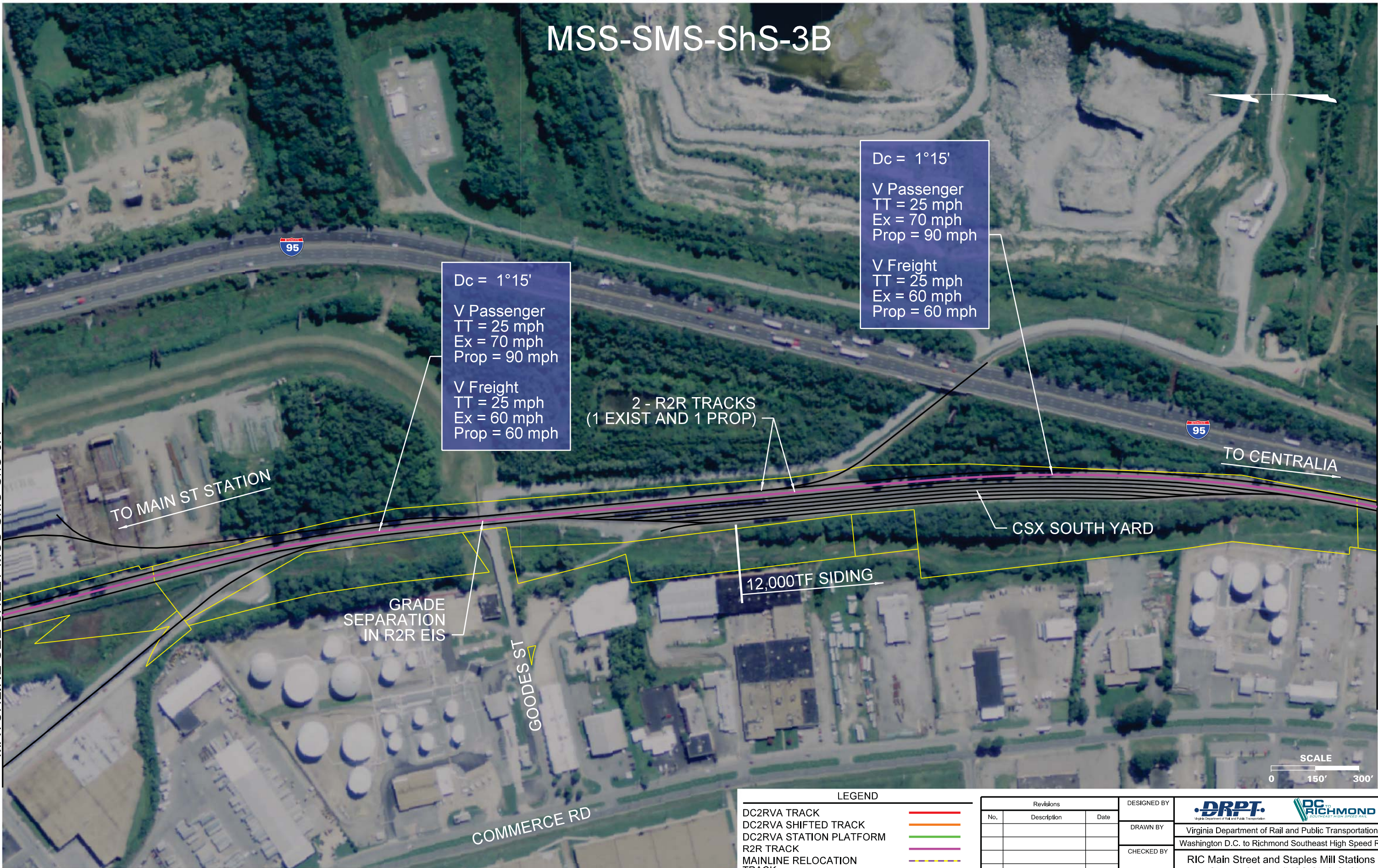
Revisions		
No.	Description	Date

DESIGNED BY
DRAWN BY
CHECKED BY
DATE 11/17/2015
SCALE As Shown

 Virginia Department of Rail and Public Transportation		
 Richmond Southeast High Speed Rail		
Washington D.C. to Richmond Southeast High Speed Rail		
RIC Main Street and Staples Mill Stations - Shared Service (MSS-SMS-ShS) Alignment Option Mapbook		
PROJECT NO.	DRAWING NO. HH	SHEET NO. 14

THESE PLANS ARE UNFINISHED AND UNAPPROVED AND ARE NOT TO BE USED
FOR ANY TYPE OF CONSTRUCTION OR THE ACQUISITION OF RIGHT OF WAY.

MSS-SMS-ShS-3B



TO MAIN ST STATION

TO CENTRALIA

CSX SOUTH YARD

12,000TF SIDING

GRADE SEPARATION IN R2R EIS

GOODES ST

COMMERCE RD



THESE PLANS ARE UNFINISHED AND UNAPPROVED AND ARE NOT TO BE USED FOR ANY TYPE OF CONSTRUCTION OR THE ACQUISITION OF RIGHT OF WAY.

LEGEND	
DC2RVA TRACK	
DC2RVA SHIFTED TRACK	
DC2RVA STATION PLATFORM	
R2R TRACK	
MAINLINE RELOCATION TRACK	
RETIRED TRACK	
EXISTING TRACK	
EXISTING R/W	

Revisions		
No.	Description	Date

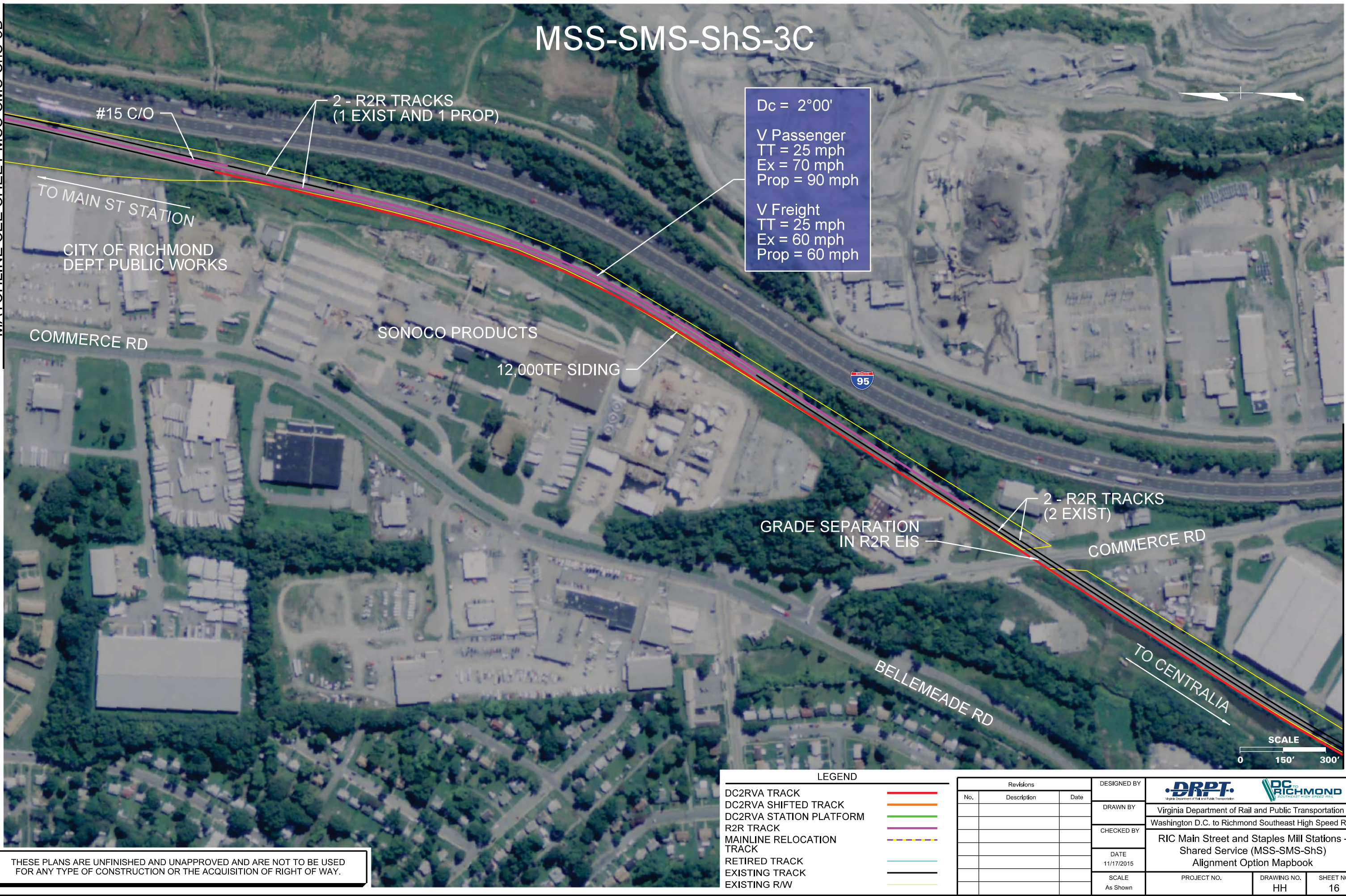
DESIGNED BY	 Virginia Department of Rail and Public Transportation		
DRAWN BY	Washington D.C. to Richmond Southeast High Speed Rail		
CHECKED BY	RIC Main Street and Staples Mill Stations - Shared Service (MSS-SMS-ShS) Alignment Option Mapbook		
DATE	11/17/2015	PROJECT NO.	DRAWING NO.
SCALE	As Shown	HH	SHEET NO. 15

Plotted by cpowell 11/13/2015 4:36:43 PM MSS-SMS-ShS-3B.dgn

MATCHLINE SEE SHEET MSS-SMS-ShS-3B

MATCHLINE SEE SHEET MSS-SMS-ShS-3D

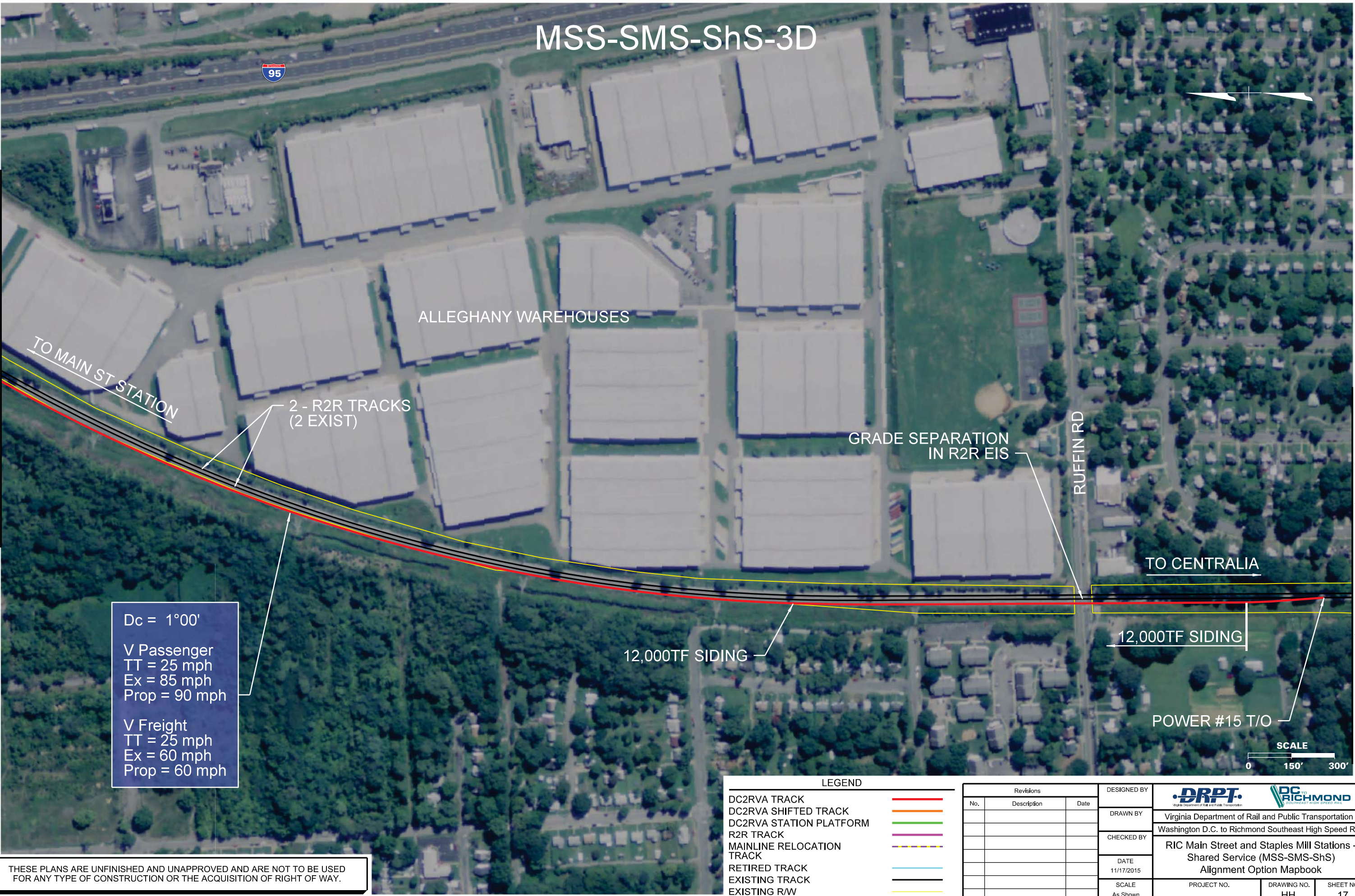
Plotted by cpowell 11/13/2015 4:36:49 PM
MSS-SMS-ShS-3C.dgn



MSS-SMS-ShS-3D

MATCHLINE SEE SHEET MSS-SMS-ShS-3C

MATCHLINE SEE SHEET MSS-SMS-ShS-3E




Dc = 1°00'
V Passenger
TT = 25 mph
Ex = 85 mph
Prop = 90 mph

V Freight
TT = 25 mph
Ex = 60 mph
Prop = 60 mph

LEGEND	
DC2RVA TRACK	—
DC2RVA SHIFTED TRACK	—
DC2RVA STATION PLATFORM	—
R2R TRACK	—
MAINLINE RELOCATION TRACK	—
RETIRED TRACK	—
EXISTING TRACK	—
EXISTING R/W	—

Revisions		
No.	Description	Date

DESIGNED BY	 Virginia Department of Rail and Public Transportation		
DRAWN BY	Washington D.C. to Richmond Southeast High Speed Rail		
CHECKED BY	RIC Main Street and Staples Mill Stations - Shared Service (MSS-SMS-ShS) Alignment Option Mapbook		
DATE	11/17/2015	PROJECT NO.	DRAWING NO.
SCALE	As Shown	HH	SHEET NO.
			17

THESE PLANS ARE UNFINISHED AND UNAPPROVED AND ARE NOT TO BE USED FOR ANY TYPE OF CONSTRUCTION OR THE ACQUISITION OF RIGHT OF WAY.

MSS-SMS-ShS-3E

PHILLIP MORRIS USA

161

TO MAIN ST STATION

TO CENTRALIA

#20 C/O

#20 C/O

BELLS RD

GRADE SEPARATION
IN R2R EIS

2 - R2R TRACKS
(2 EXIST)

DALE AVE



MATCHLINE SEE SHEET MSS-SMS-ShS-3D

MATCHLINE SEE SHEET MSS-SMS-ShS-3F

LEGEND	
DC2RVA TRACK	
DC2RVA SHIFTED TRACK	
DC2RVA STATION PLATFORM	
R2R TRACK	
MAINLINE RELOCATION TRACK	
RETIRED TRACK	
EXISTING TRACK	
EXISTING R/W	

Revisions		
No.	Description	Date

DESIGNED BY
DRAWN BY
CHECKED BY
DATE 11/17/2015
SCALE As Shown

Virginia Department of Rail and Public Transportation
Washington D.C. to Richmond Southeast High Speed Rail

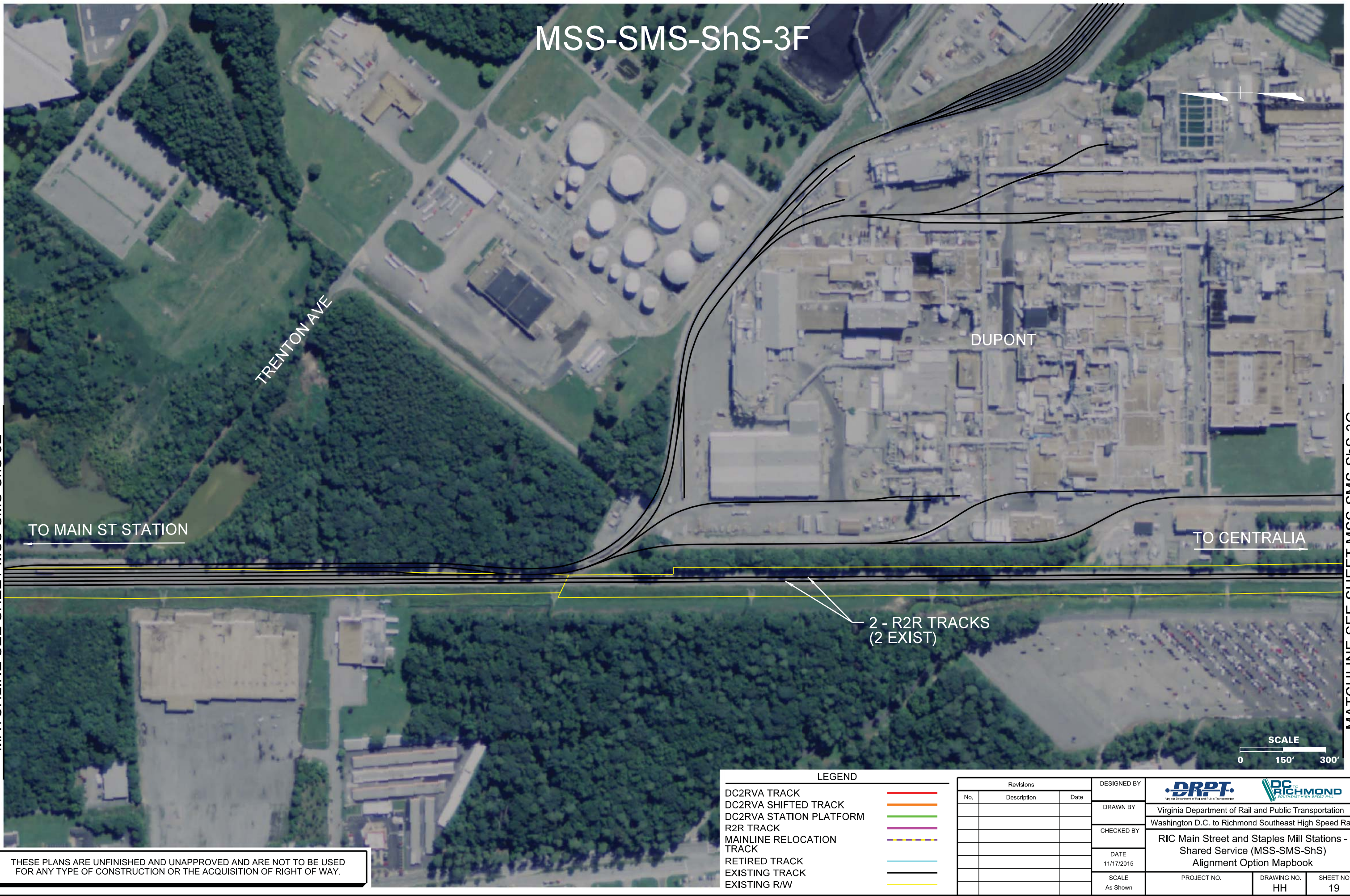
RIC Main Street and Staples Mill Stations -
Shared Service (MSS-SMS-ShS)
Alignment Option Mapbook

PROJECT NO.	DRAWING NO. HH	SHEET NO. 18
-------------	-------------------	-----------------

THESE PLANS ARE UNFINISHED AND UNAPPROVED AND ARE NOT TO BE USED FOR ANY TYPE OF CONSTRUCTION OR THE ACQUISITION OF RIGHT OF WAY.

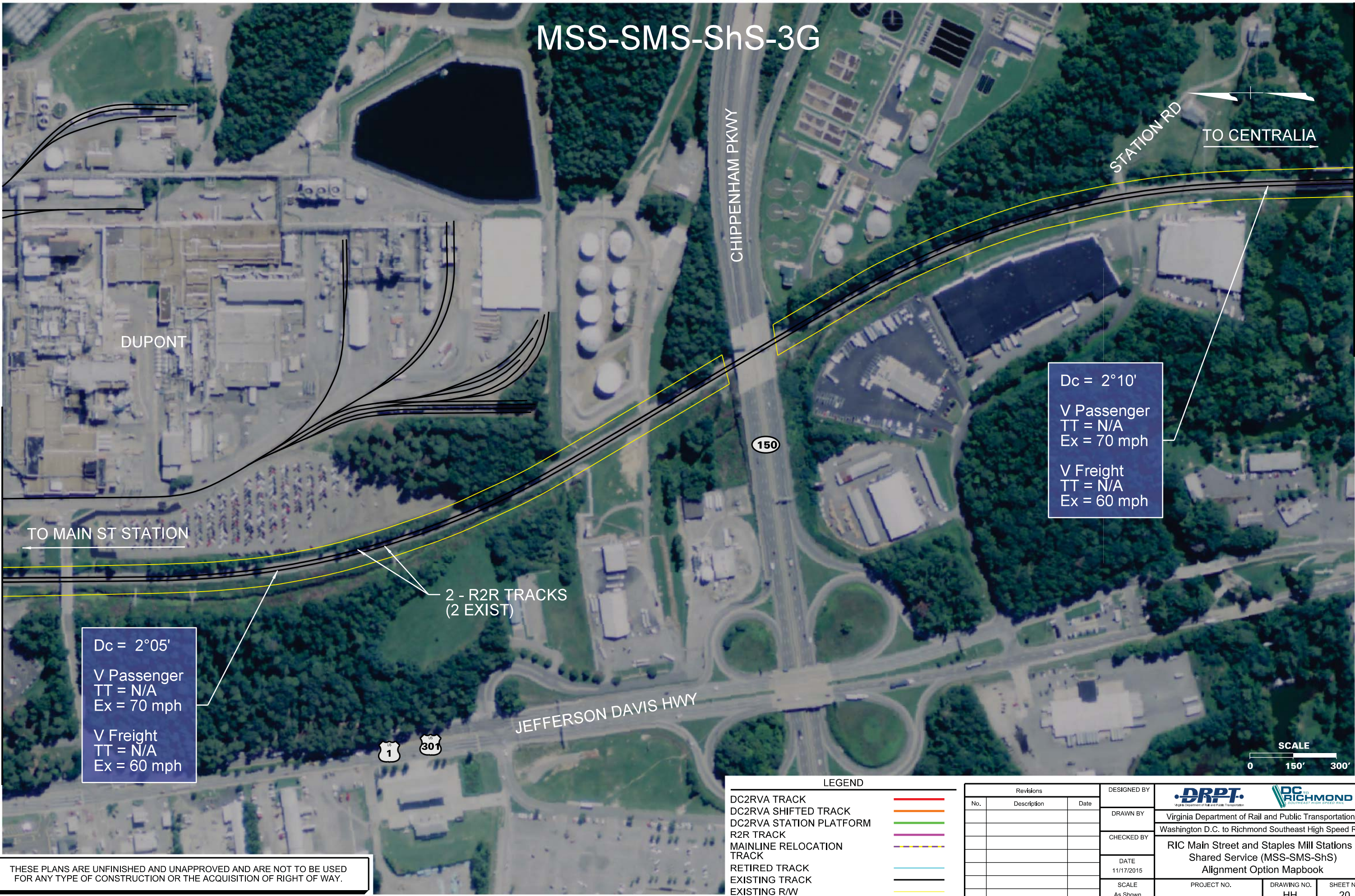
Plotted by cpowell 11/13/2015 4:37:05 PM
MSS-SMS-ShS-3F.dgn

MATCHLINE SEE SHEET MSS-SMS-ShS-3E



MATCHLINE SEE SHEET MSS-SMS-ShS-3G

MSS-SMS-ShS-3G



Dc = 2°05'
V Passenger
TT = N/A
Ex = 70 mph

V Freight
TT = N/A
Ex = 60 mph

Dc = 2°10'
V Passenger
TT = N/A
Ex = 70 mph

V Freight
TT = N/A
Ex = 60 mph

2 - R2R TRACKS
(2 EXIST)

JEFFERSON DAVIS HWY

CHIPPENHAM PKWY

STATION RD
TO CENTRALIA

MATCHLINE SEE SHEET MSS-SMS-ShS-3F

MATCHLINE SEE SHEET MSS-SMS-ShS-3H

THESE PLANS ARE UNFINISHED AND UNAPPROVED AND ARE NOT TO BE USED FOR ANY TYPE OF CONSTRUCTION OR THE ACQUISITION OF RIGHT OF WAY.

LEGEND

- DC2RVA TRACK
- DC2RVA SHIFTED TRACK
- DC2RVA STATION PLATFORM
- R2R TRACK
- MAINLINE RELOCATION TRACK
- RETIRED TRACK
- EXISTING TRACK
- EXISTING R/W

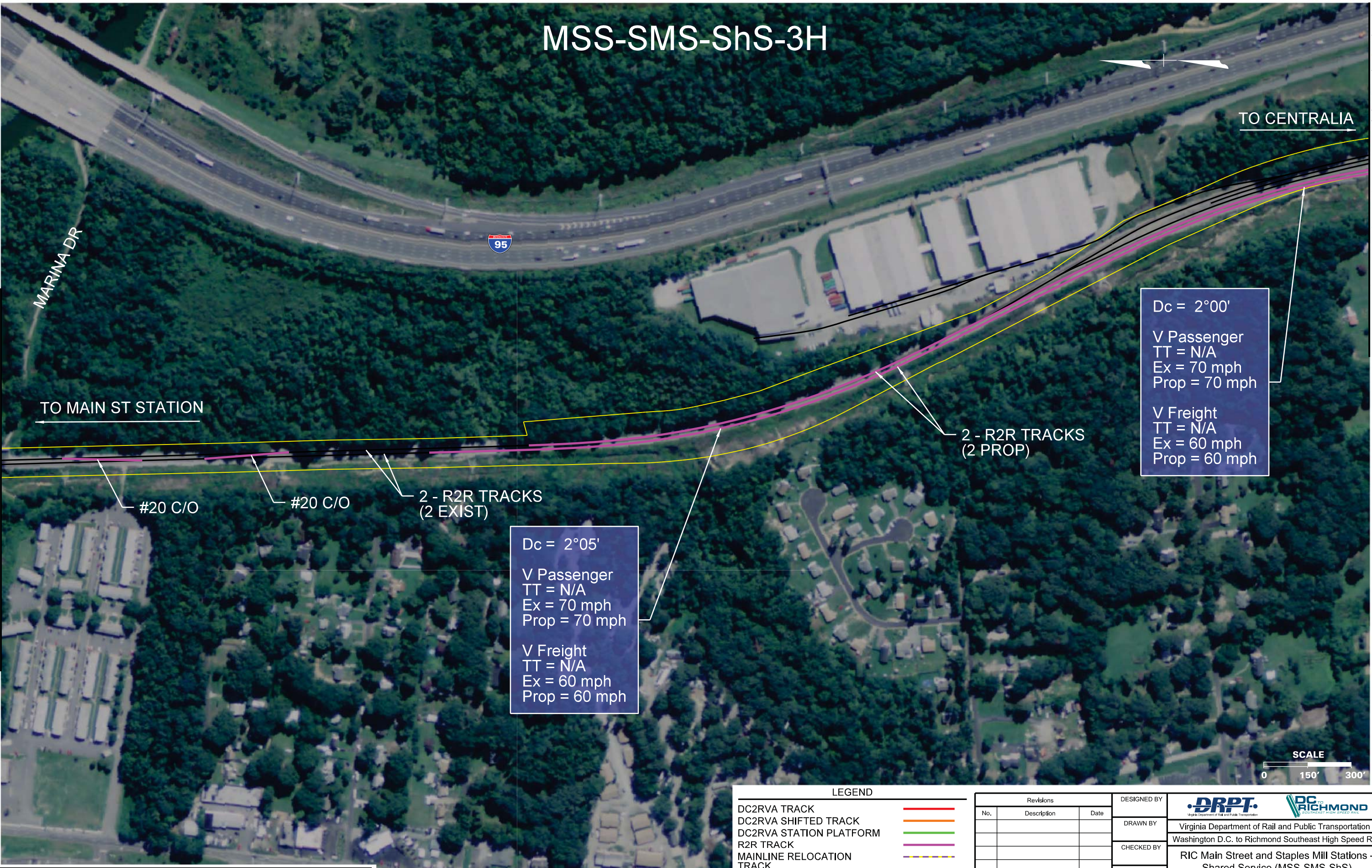
Revisions		
No.	Description	Date

DESIGNED BY	DRPT Virginia Department of Rail and Public Transportation		
DRAWN BY	Virginia Department of Rail and Public Transportation		
CHECKED BY	Washington D.C. to Richmond Southeast High Speed Rail		
DATE	11/17/2015		
SCALE	As Shown		
PROJECT NO.	DRAWING NO.	SHEET NO.	
	HH	20	

MSS-SMS-ShS-3H

MATCHLINE SEE SHEET MSS-SMS-ShS-3G

MATCHLINE SEE SHEET MSS-SMS-ShS-3I



TO MAIN ST STATION

TO CENTRALIA

Dc = 2°00'
V Passenger
TT = N/A
Ex = 70 mph
Prop = 70 mph

V Freight
TT = N/A
Ex = 60 mph
Prop = 60 mph

2 - R2R TRACKS
(2 PROP)

2 - R2R TRACKS
(2 EXIST)

#20 C/O

#20 C/O

Dc = 2°05'
V Passenger
TT = N/A
Ex = 70 mph
Prop = 70 mph

V Freight
TT = N/A
Ex = 60 mph
Prop = 60 mph



THESE PLANS ARE UNFINISHED AND UNAPPROVED AND ARE NOT TO BE USED FOR ANY TYPE OF CONSTRUCTION OR THE ACQUISITION OF RIGHT OF WAY.

LEGEND

DC2RVA TRACK	Red line
DC2RVA SHIFTED TRACK	Orange line
DC2RVA STATION PLATFORM	Green line
R2R TRACK	Purple line
MAINLINE RELOCATION TRACK	Yellow dashed line
RETIRED TRACK	Blue line
EXISTING TRACK	Black line
EXISTING R/W	Yellow line

Revisions		
No.	Description	Date

DESIGNED BY	DRPT Virginia Department of Rail and Public Transportation Washington D.C. to Richmond Southeast High Speed Rail
DRAWN BY	
CHECKED BY	
DATE	11/17/2015
SCALE	As Shown

RIC Main Street and Staples Mill Stations - Shared Service (MSS-SMS-ShS) Alignment Option Mapbook	PROJECT NO.	DRAWING NO.	SHEET NO.
		HH	21

MSS-SMS-ShS-3I

MATCHLINE SEE SHEET MSS-SMS-ShS-3H

MATCHLINE SEE SHEET MSS-SMS-ShS-3J

TO MAIN ST STATION

2 - R2R TRACKS
(2 PROP)

Dc = 2°00'
V Passenger
TT = N/A
Ex = 70 mph
Prop = 70 mph

V Freight
TT = N/A
Ex = 60 mph
Prop = 60 mph

Dc = 2°05'
V Passenger
TT = N/A
Ex = 70 mph
Prop = 70 mph

V Freight
TT = N/A
Ex = 60 mph
Prop = 60 mph

TO CENTRALIA

ELLIHAM AVE

JEFFERSON DAVIS HWY



THESE PLANS ARE UNFINISHED AND UNAPPROVED AND ARE NOT TO BE USED FOR ANY TYPE OF CONSTRUCTION OR THE ACQUISITION OF RIGHT OF WAY.

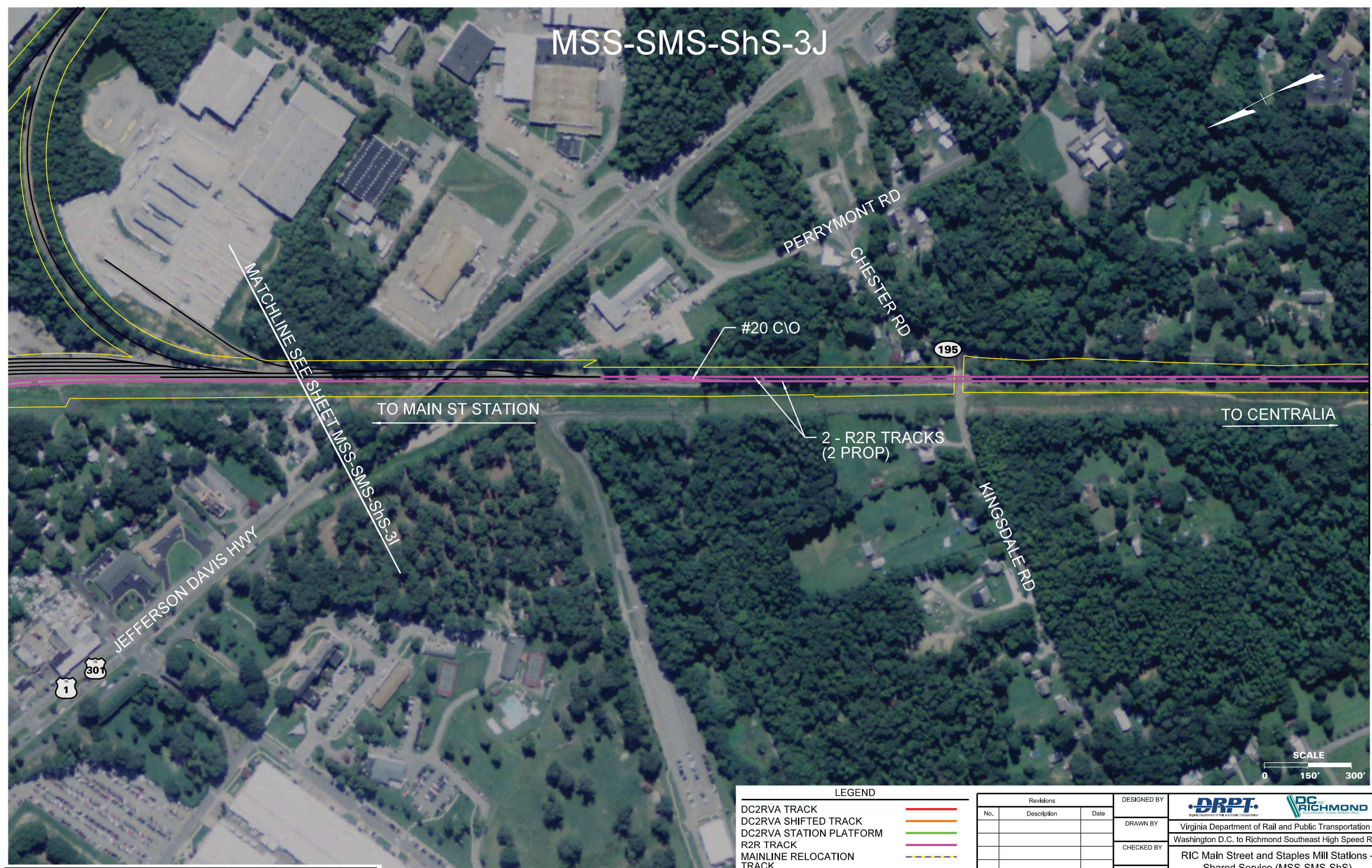
LEGEND

- DC2RVA TRACK
- DC2RVA SHIFTED TRACK
- DC2RVA STATION PLATFORM
- R2R TRACK
- MAINLINE RELOCATION TRACK
- RETIRED TRACK
- EXISTING TRACK
- EXISTING R/W

Revisions		
No.	Description	Date

DESIGNED BY	 Virginia Department of Rail and Public Transportation Washington D.C. to Richmond Southeast High Speed Rail		
DRAWN BY			
CHECKED BY			
DATE	11/17/2015		
SCALE	As Shown		
PROJECT NO.	DRAWING NO.	SHEET NO.	
	HH	22	

MSS-SMS-ShS-3J



THESE PLANS ARE UNFINISHED AND UNAPPROVED AND ARE NOT TO BE USED FOR ANY TYPE OF CONSTRUCTION OR THE ACQUISITION OF RIGHT OF WAY.

LEGEND

DC2RVA TRACK	
DC2RVA SHIFTED TRACK	
DC2RVA STATION PLATFORM	
R2R TRACK	
MAINLINE RELOCATION TRACK	
RETIRED TRACK	
EXISTING TRACK	
EXISTING R/W	

Revisions		
No.	Description	Date

DESIGNED BY	 Virginia Department of Rail and Public Transportation		
DRAWN BY	Washington D.C. to Richmond Southeast High Speed Rail		
CHECKED BY	RIC Main Street and Staples Mill Stations - Shared Service (MSS-SMS-ShS) Alignment Option Mapbook		
DATE	11/17/2015	PROJECT NO.	DRAWING NO.
SCALE	As Shown	HH	SHEET NO.
			23

MSS-SMS-ShS-3K

TO MAIN ST STATION

2 - R2R TRACKS
(2 PROP)

BRINKLEY RD

KINGSDALE RD

CHESTER RD

TO CENTRALIA

MATCHLINE SEE SHEET MSS-SMS-ShS-3L

Dc = 2°30'
V Passenger
TT = N/A
Ex = 70 mph
Prop = 70 mph

V Freight
TT = N/A
Ex = 60 mph
Prop = 60 mph



MATCHLINE SEE SHEET MSS-SMS-ShS-3J

LEGEND

DC2RVA TRACK	
DC2RVA SHIFTED TRACK	
DC2RVA STATION PLATFORM	
R2R TRACK	
MAINLINE RELOCATION TRACK	
RETIRED TRACK	
EXISTING TRACK	
EXISTING R/W	

Revisions		
No.	Description	Date

DESIGNED BY	 Virginia Department of Rail and Public Transportation Washington D.C. to Richmond Southeast High Speed Rail		
DRAWN BY			
CHECKED BY			
DATE 11/17/2015			
SCALE As Shown	PROJECT NO.	DRAWING NO. HH	SHEET NO. 24

THESE PLANS ARE UNFINISHED AND UNAPPROVED AND ARE NOT TO BE USED FOR ANY TYPE OF CONSTRUCTION OR THE ACQUISITION OF RIGHT OF WAY.

MSS-SMS-ShS-3L

145

CHESTER RD

288

WORLD WAR II VETERANS MEMORIAL HWY

Dc = 4°15'
V Passenger
TT = N/A
Ex = 50 mph
Prop = 50 mph

V Freight
TT = N/A
Ex = 40 mph
Prop = 40 mph

#20 C/O

#20 C/O

TO CENTRALIA

OLD LN

MATCHLINE SEE SHEET MSS-SMS-ShS-3K

TO MAIN ST STATION

2 - R2R TRACKS
(2 PROP)

Dc = 2°30'
V Passenger
TT = N/A
Ex = 70 mph
Prop = 70 mph

V Freight
TT = N/A
Ex = 60 mph
Prop = 60 mph

EXISTING C/O

TO ACCA YARD

SCALE
0 150' 300'

LEGEND

DC2RVA TRACK	
DC2RVA SHIFTED TRACK	
DC2RVA STATION PLATFORM	
R2R TRACK	
MAINLINE RELOCATION TRACK	
RETIRED TRACK	
EXISTING TRACK	
EXISTING R/W	

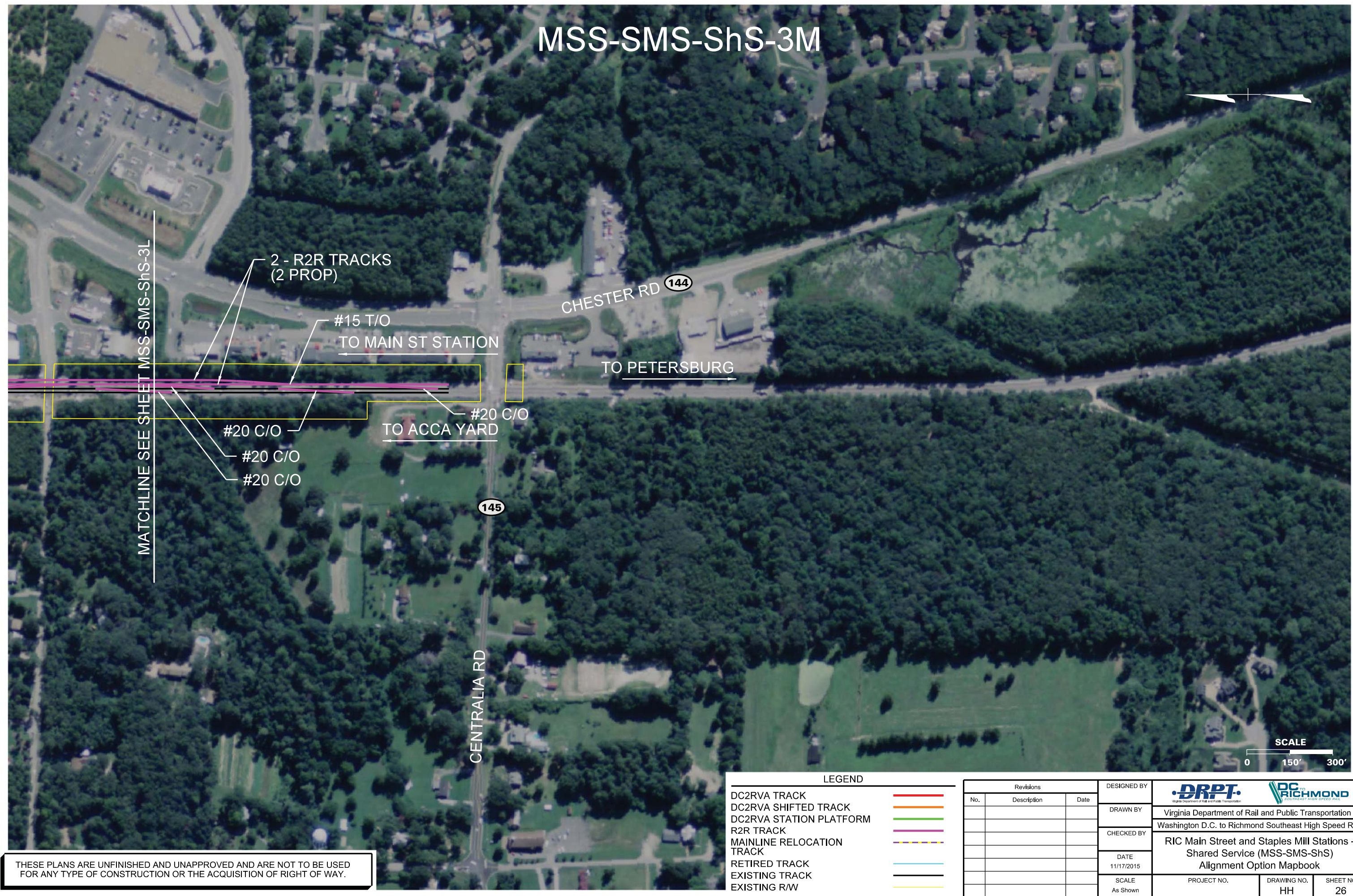
Revisions		
No.	Description	Date

DESIGNED BY
DRAWN BY
CHECKED BY
DATE 11/17/2015
SCALE As Shown

 Virginia Department of Rail and Public Transportation		
Washington D.C. to Richmond Southeast High Speed Rail		
RIC Main Street and Staples Mill Stations - Shared Service (MSS-SMS-ShS) Alignment Option Mapbook		
PROJECT NO.	DRAWING NO. HH	SHEET NO. 25

THESE PLANS ARE UNFINISHED AND UNAPPROVED AND ARE NOT TO BE USED FOR ANY TYPE OF CONSTRUCTION OR THE ACQUISITION OF RIGHT OF WAY.



MSS-SMS-ShS-3M



THESE PLANS ARE UNFINISHED AND UNAPPROVED AND ARE NOT TO BE USED FOR ANY TYPE OF CONSTRUCTION OR THE ACQUISITION OF RIGHT OF WAY.

LEGEND

DC2RVA TRACK	
DC2RVA SHIFTED TRACK	
DC2RVA STATION PLATFORM	
R2R TRACK	
MAINLINE RELOCATION TRACK	
RETIRED TRACK	
EXISTING TRACK	
EXISTING R/W	

Revisions			DESIGNED BY	 		
No.	Description	Date		DRAWN BY	Virginia Department of Rail and Public Transportation	
			CHECKED BY	Washington D.C. to Richmond Southeast High Speed Rail		
			DATE	RIC Main Street and Staples Mill Stations - Shared Service (MSS-SMS-ShS) Alignment Option Mapbook		
			SCALE	PROJECT NO.	DRAWING NO.	SHEET NO.
			As Shown			