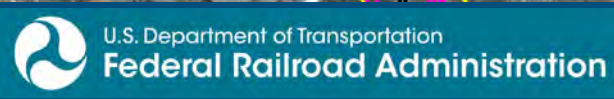
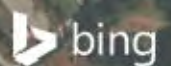


0 250 500
 Feet
 1 inch = 500 feet
 @ 11 x 17 inches
 Projection: Lambert Conformal Conic
 State Plane Virginia North FIPS 4501 Feet
 North American Datum of 1983
 Imagery/Basemap Source: 2015 Bing
 Aerial Imagery; ESRI World Transportation

Legend

- Category 2 Vibration Impact Contour
- Category 3 Vibration Impact Contour
- Category 2 Vibration Impacts
- Category 3 Vibration Impacts
- CSXT Mileposts
- Track - Existing
- Stations
- Proposed Stations
- CSXT ROW (County Parcel Data)
- City/County Boundary

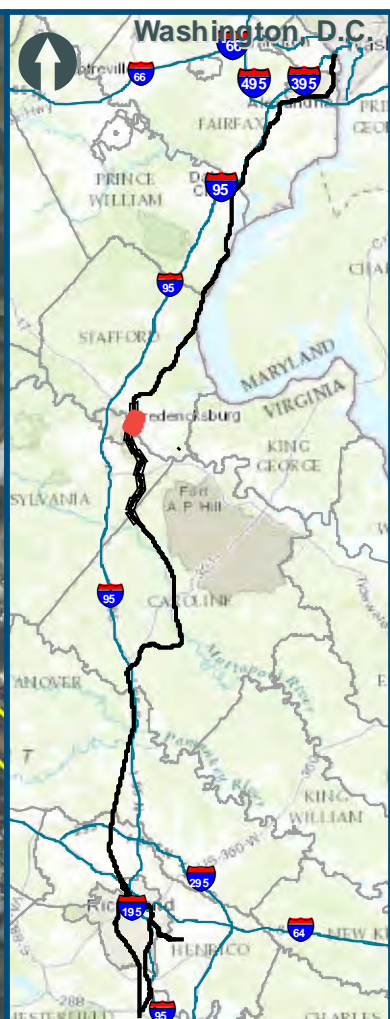
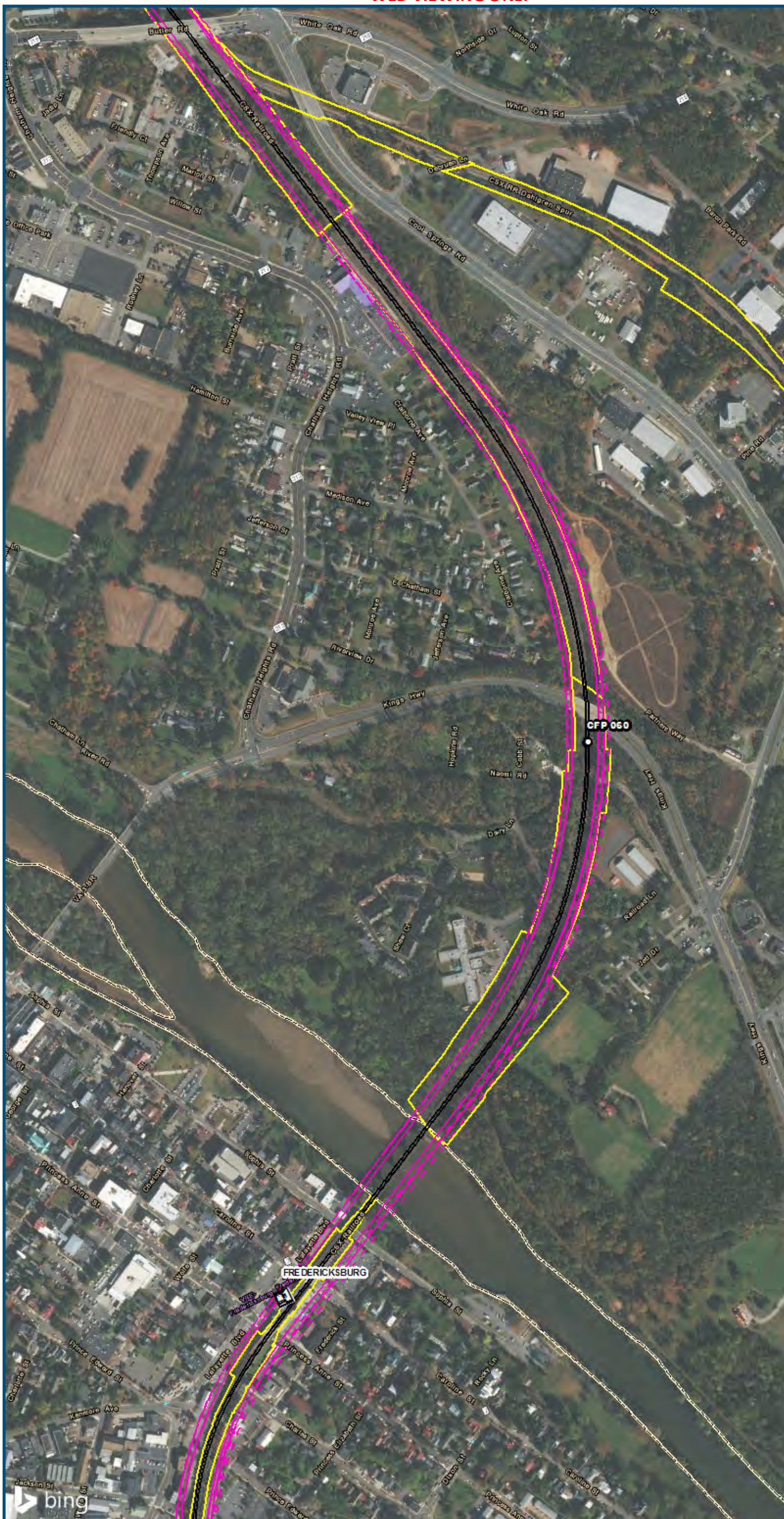
**Appendix Q
 Vibration Analysis
 Area 3A & 3B:
 Fredericksburg**



www.DC2RVArail.com



\\dcis-main\gis_data\GIS\Projects\0115-46_VA\Dep\toR\Rail-Pub\toT\transportation\0239056_RAPS-4\ItDev-Concept\Eng\map_docs\mxd\01EIS\Tech_Reports\Noise and Vibration\Vibration_Area3AB_Mapbook_11x17.mxd | Last Updated: 08.16.2017

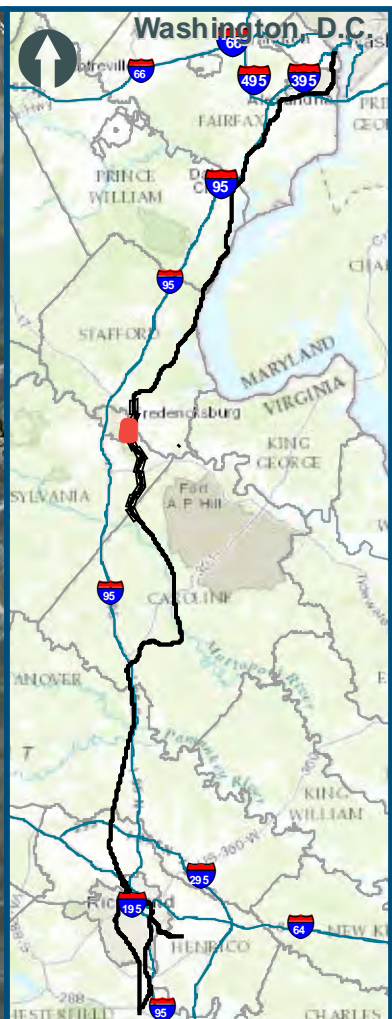
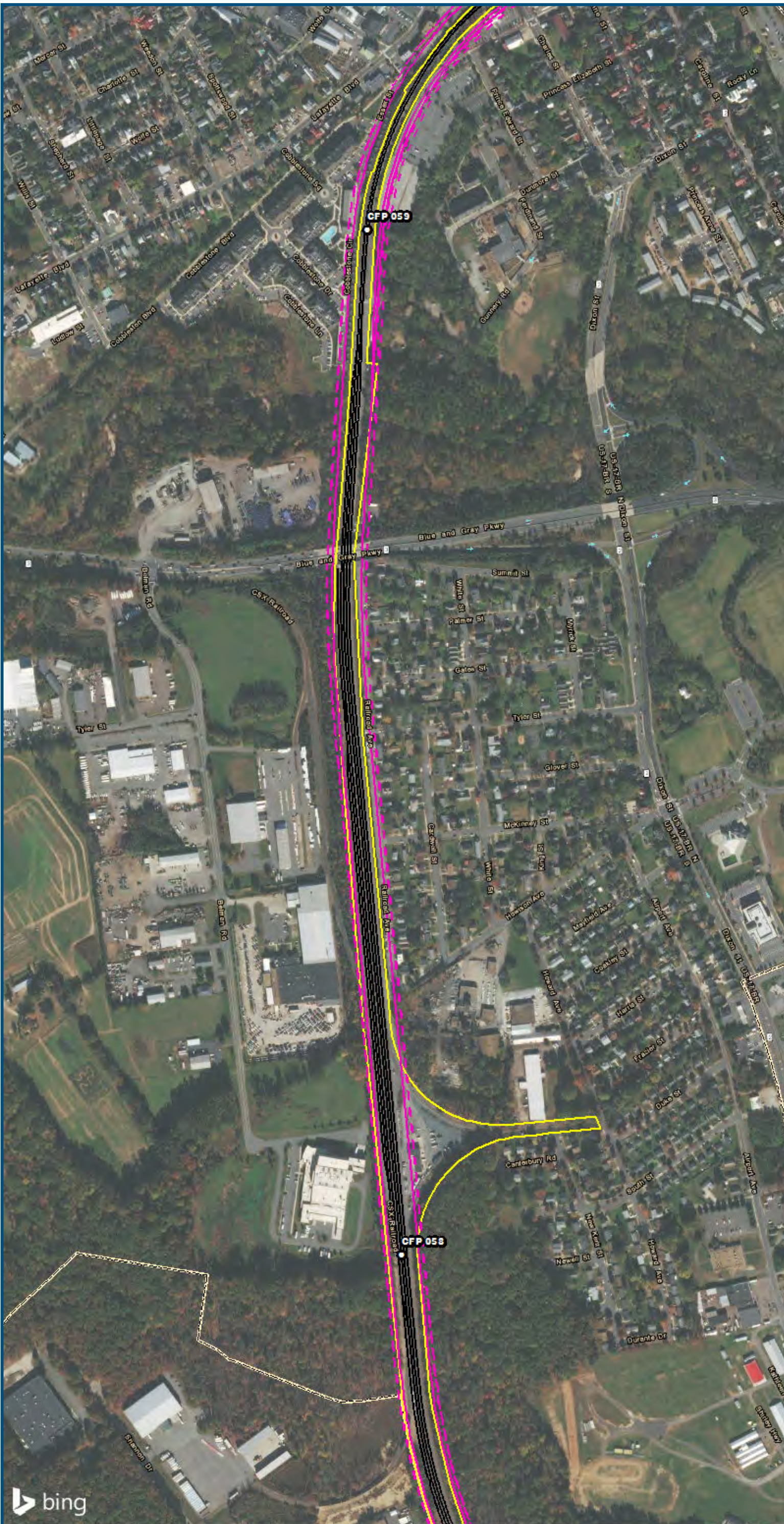


0 250 500
 Feet
 1 inch = 500 feet
 @ 11 x 17 inches
 Projection: Lambert Conformal Conic
 State Plane Virginia North FIPS 4501 Feet
 North American Datum of 1983
 Imagery/Basemap Source: 2015 Bing
 Aerial Imagery; ESRI World Transportation

- Legend**
- Category 2 Vibration Impact Contour
 - Category 3 Vibration Impact Contour
 - Category 2 Vibration Impacts
 - Category 3 Vibration Impacts
 - CSXT Mileposts
 - Track - Existing
 - Stations
 - Proposed Stations
 - CSXT ROW (County Parcel Data)
 - City/County Boundary

**Appendix Q
 Vibration Analysis
 Area 3A & 3B:
 Fredericksburg**

\\dcis-main\gis_data\GIS\Projects\0115-46_VA_Depot\Rail-Public\Tech_Reports\NoiseandVibration\Area3AB_Mapbook_11x17.mxd | Last Updated: 08/16/2017

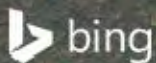


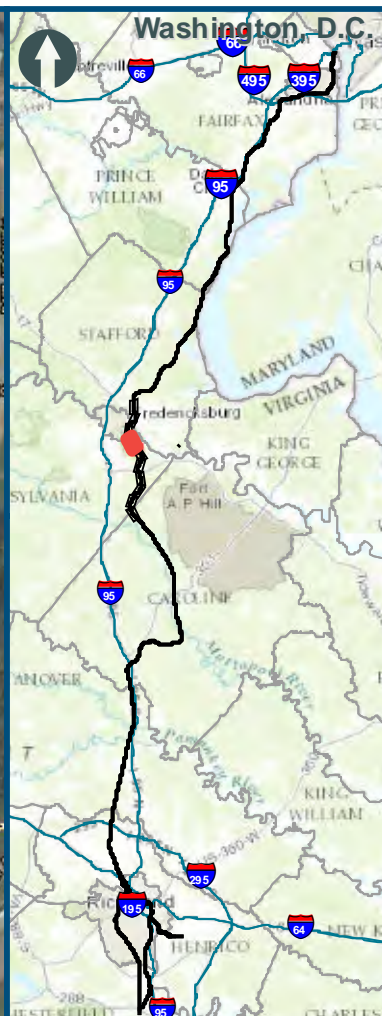
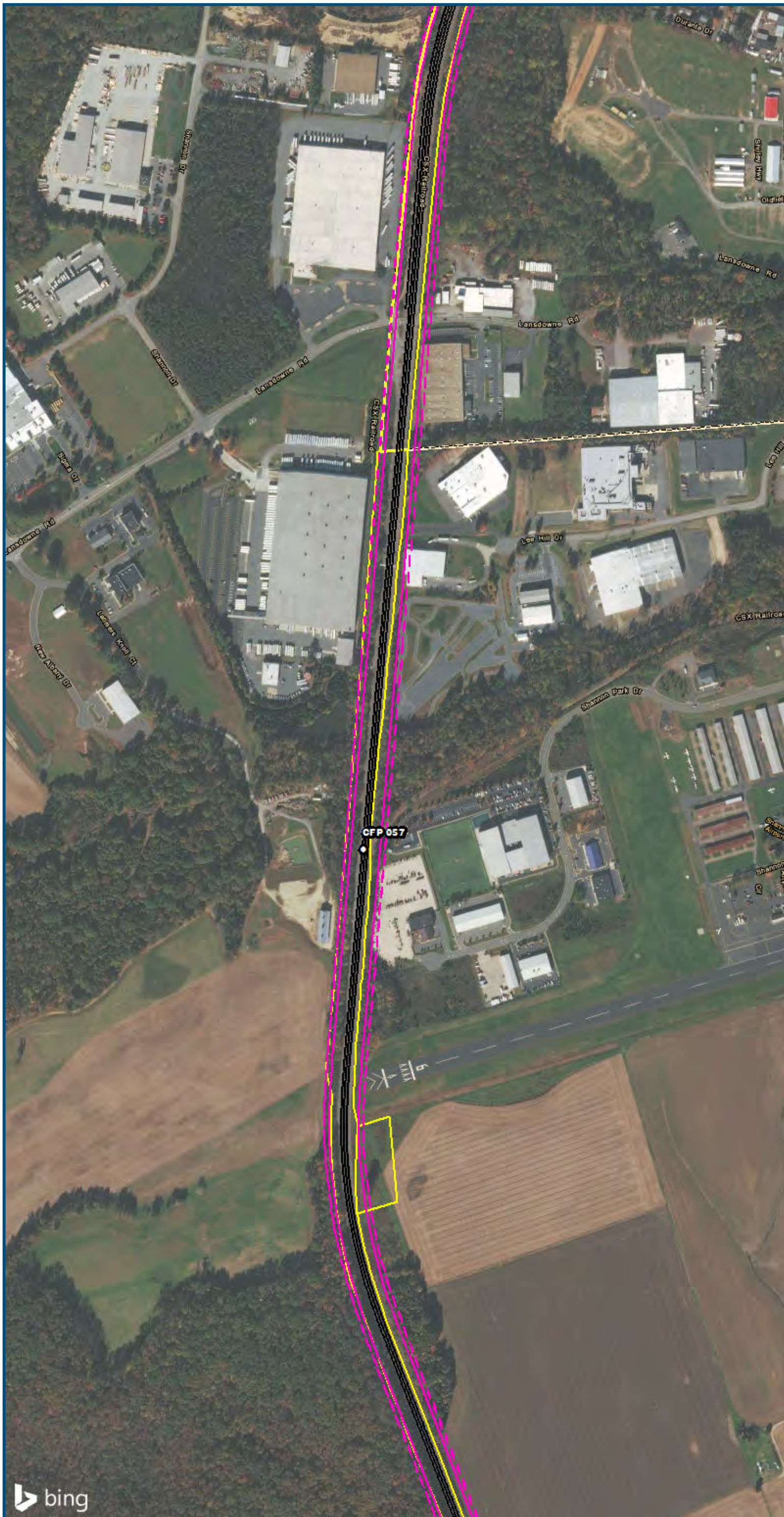
0 250 500
 Feet
 1 inch = 500 feet
 @ 11 x 17 inches
 Projection: Lambert Conformal Conic
 State Plane Virginia North FIPS 4501 Feet
 North American Datum of 1983
 Imagery/Basemap Source: 2015 Bing
 Aerial Imagery; ESRI World Transportation

Legend

- Category 2 Vibration Impact Contour
- Category 3 Vibration Impact Contour
- Category 2 Vibration Impacts
- Category 3 Vibration Impacts
- CSXT Mileposts
- Track - Existing
- Station Stations
- Station Proposed Stations
- CSXT ROW (County Parcel Data)
- City/County Boundary

**Appendix Q
 Vibration Analysis
 Area 3A & 3B:
 Fredericksburg**





0 250 500
 Feet
 1 inch = 500 feet
 @ 11 x 17 inches
 Projection: Lambert Conformal Conic
 State Plane Virginia North FIPS 4501 Feet
 North American Datum of 1983
 Imagery/Basemap Source: 2015 Bing
 Aerial Imagery; ESRI World Transportation

- Legend**
- Category 2 Vibration Impact Contour
 - Category 3 Vibration Impact Contour
 - Category 2 Vibration Impacts
 - Category 3 Vibration Impacts
 - CSXT Mileposts
 - Track - Existing
 - Stations
 - Proposed Stations
 - CSXT ROW (County Parcel Data)
 - City/County Boundary

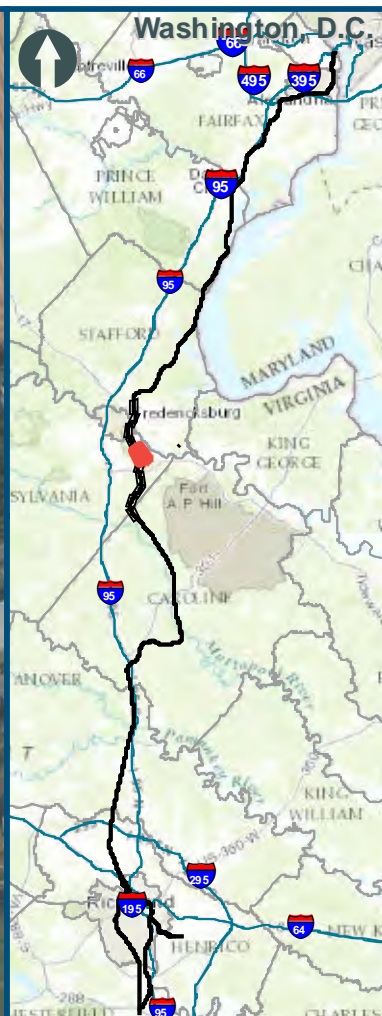
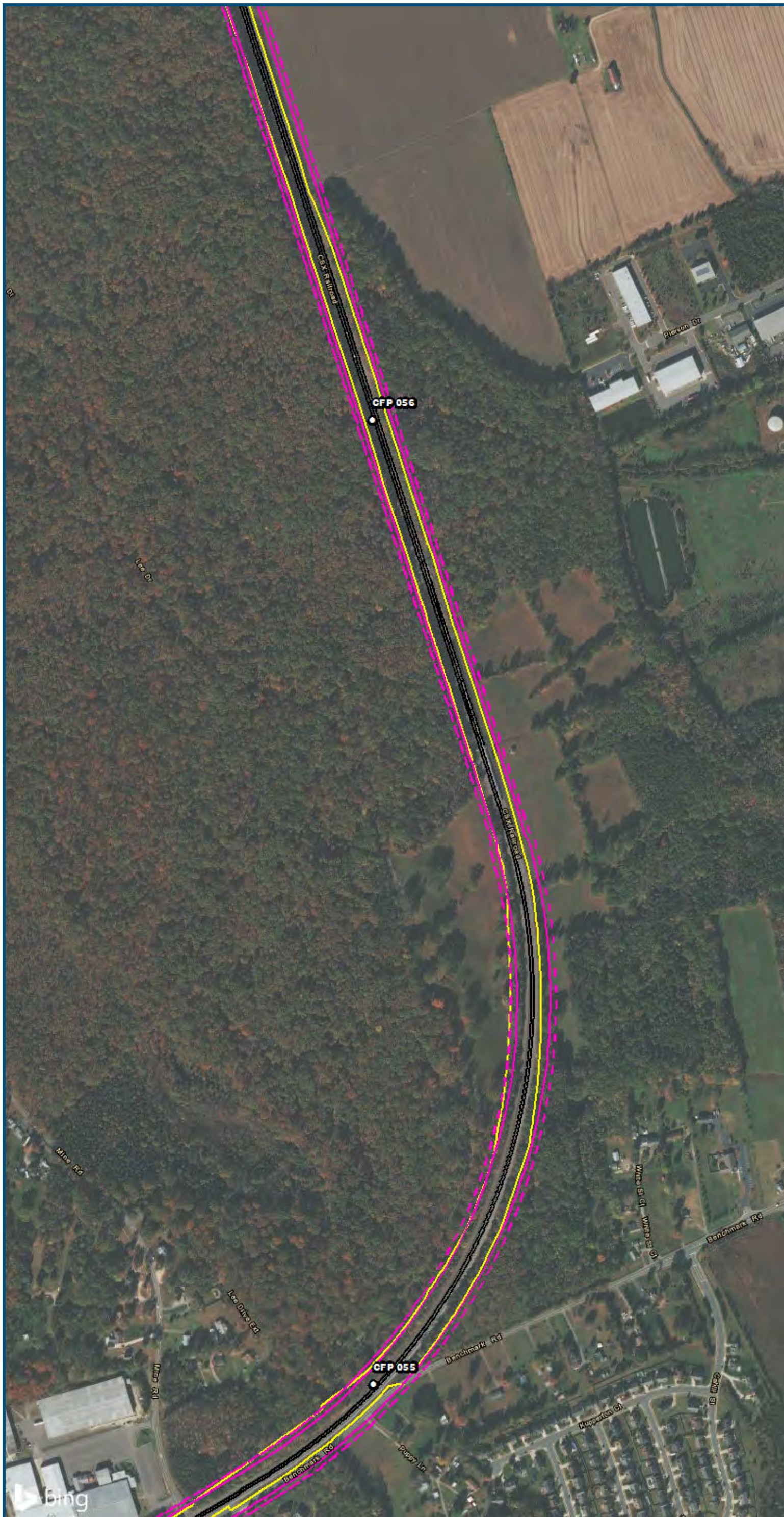
**Appendix Q
 Vibration Analysis
 Area 3A & 3B:
 Fredericksburg**



www.DC2RVArail.com



\\dcis-main\gis_data\GIS\Projects\0115-46_VA_Dep\to\Rail-Public\T_ransportation\0239056_RAPS-4\ITDev-Concept\Eng\map_docs\mxd\01EIS\Tech_Reports\Noise and Vibration\Vibration_Area3AB_Mapbook_11x17.mxd | Last Updated: 08/16/2017



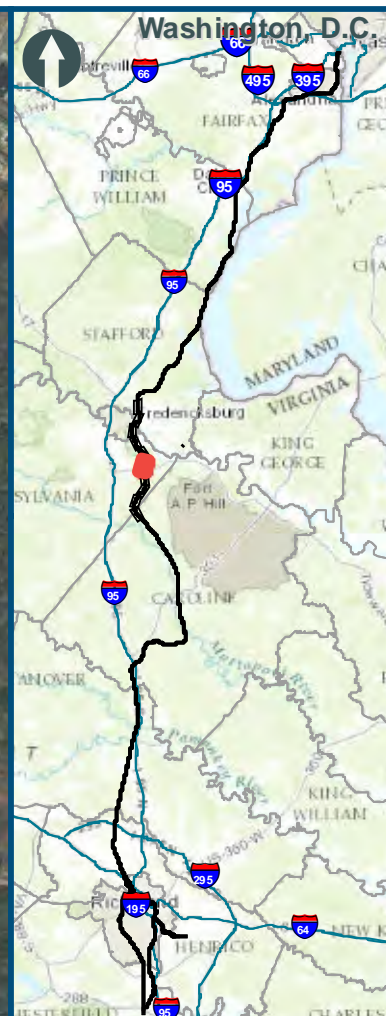
0 250 500
 Feet
 1 inch = 500 feet
 @ 11 x 17 inches
 Projection: Lambert Conformal Conic
 State Plane Virginia North FIPS 4501 Feet
 North American Datum of 1983
 Imagery/Basemap Source: 2015 Bing
 Aerial Imagery; ESRI World Transportation

Legend

- Category 2 Vibration Impact Contour
- Category 3 Vibration Impact Contour
- Category 2 Vibration Impacts
- Category 3 Vibration Impacts
- CSXT Mileposts
- Track - Existing
- Stations
- Proposed Stations
- CSXT ROW (County Parcel Data)
- City/County Boundary

**Appendix Q
 Vibration Analysis
 Area 3A & 3B:
 Fredericksburg**

\\dcis-main\gis_data\GIS\Projects\0115-46_VA_Depot\Rail-PublicTransportation\0239056_RAPS-4\IT\Dev-Concept\Eng\map_docs\mxd\01EIS\Tech_Reports\NoiseandVibration\Vibration_Area3AB_Mapbook_11x17.mxd | Last Updated: 08.16.2017



0 250 500
 Feet
 1 inch = 500 feet
 @ 11 x 17 inches
 Projection: Lambert Conformal Conic
 State Plane Virginia North FIPS 4501 Feet
 North American Datum of 1983
 Imagery/Basemap Source: 2015 Bing
 Aerial Imagery; ESRI World Transportation

Legend

- Category 2 Vibration Impact Contour
- Category 3 Vibration Impact Contour
- Category 2 Vibration Impacts
- Category 3 Vibration Impacts
- CSXT Mileposts
- Track - Existing
- Stations
- Proposed Stations
- CSXT ROW (County Parcel Data)
- City/County Boundary

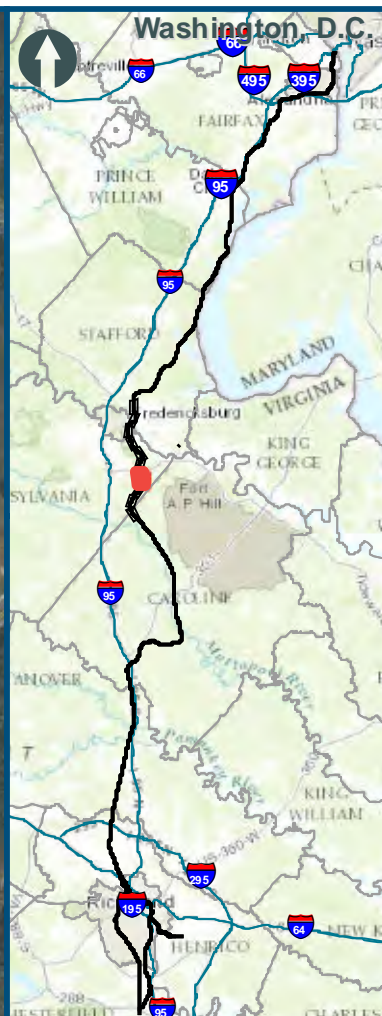
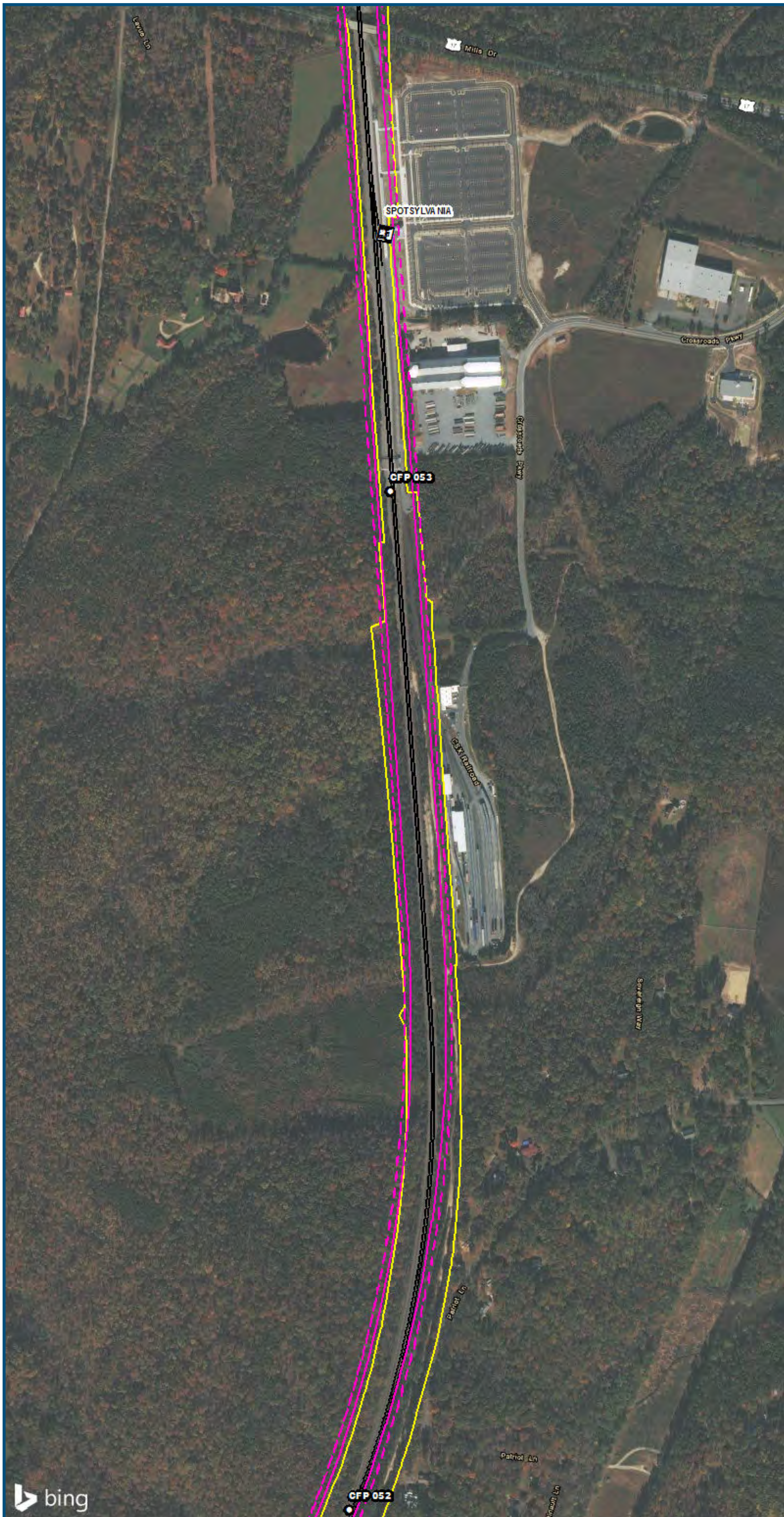
**Appendix Q
 Vibration Analysis
 Area 3A & 3B:
 Fredericksburg**



www.DC2RVArail.com



\\vlis-main\gis_data\GIS\Projects\0115-46_VA_Depot\Rail-Public\Transportation\0239056_RAPS-4\ITDev-Concept\Eng\map_docs\mxd\01EIS\Tech_Reports\NoiseandVibration\Ibratton_Area3AB_Mapbook_11x17.mxd | Last Updated: 08/16/2017

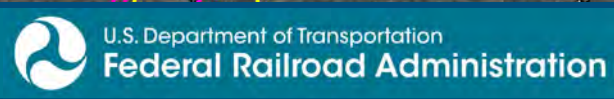
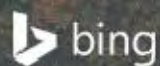


0 250 500
 Feet
 1 inch = 500 feet
 @ 11 x 17 inches
 Projection: Lambert Conformal Conic
 State Plane Virginia North FIPS 4501 Feet
 North American Datum of 1983
 Imagery/Basemap Source: 2015 Bing
 Aerial Imagery; ESRI World Transportation

Legend

- Category 2 Vibration Impact Contour
- Category 3 Vibration Impact Contour
- Category 2 Vibration Impacts
- Category 3 Vibration Impacts
- CSXT Mileposts
- Track - Existing
- Stations
- Proposed Stations
- CSXT ROW (County Parcel Data)
- City/County Boundary

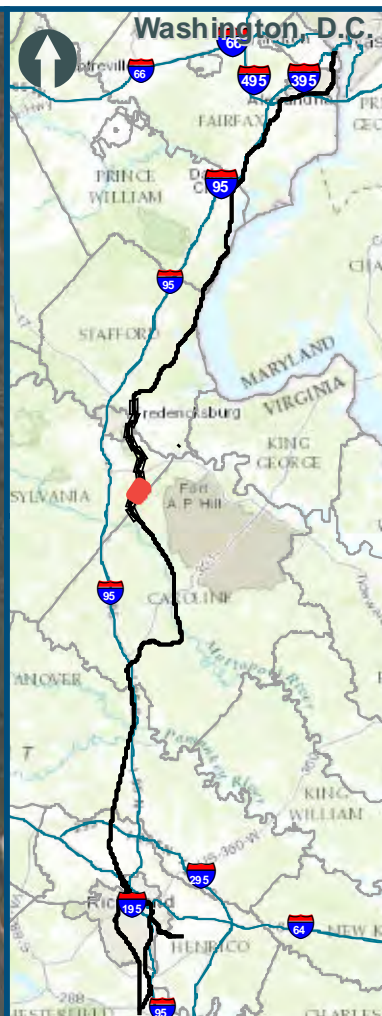
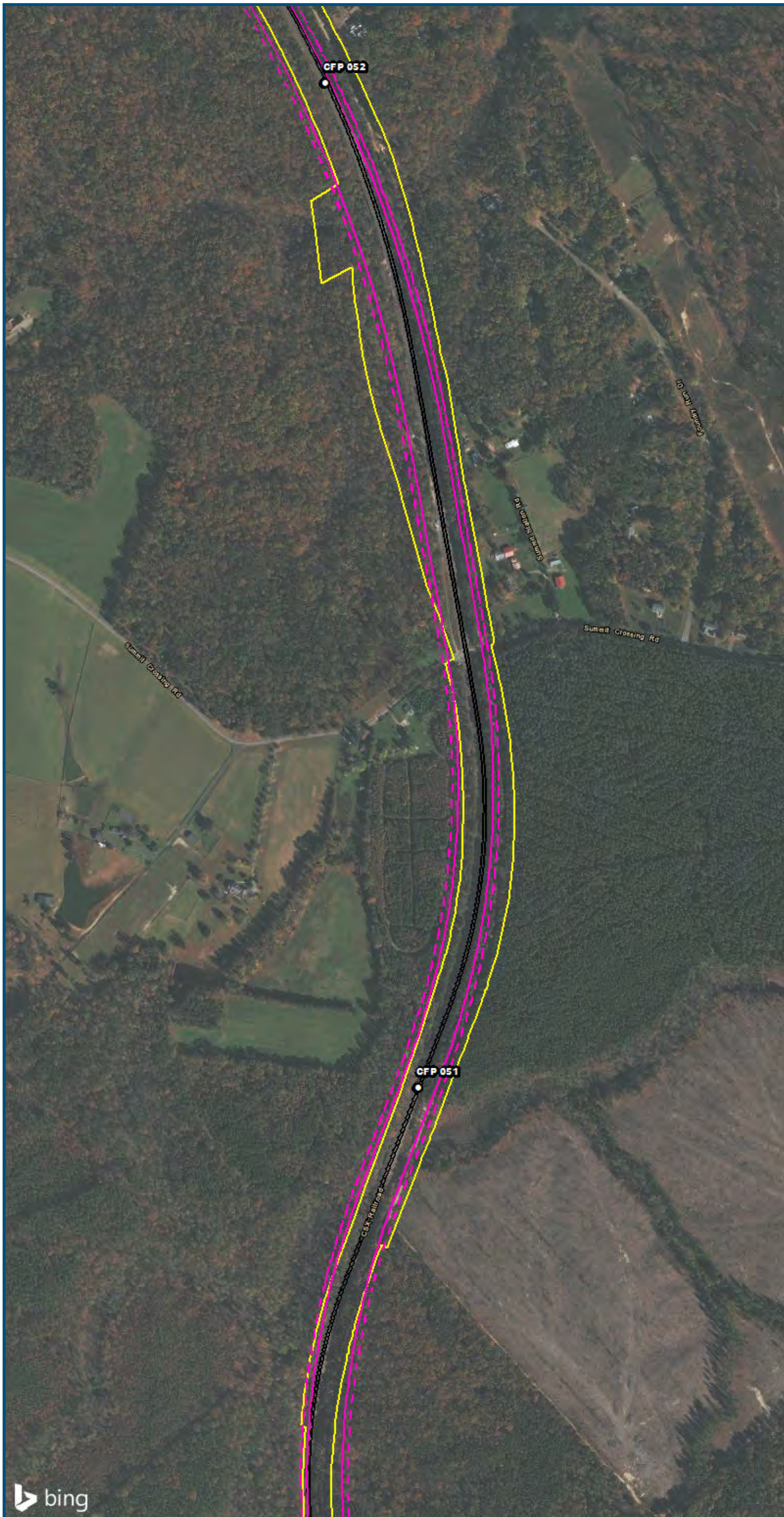
**Appendix Q
 Vibration Analysis
 Area 3A & 3B:
 Fredericksburg**



www.DC2RVArail.com



\\vlis-main\gis_data\GIS\Projects\0115-46_VA_Dep\ofRail-Public\T-transportation\0239056_RAPS-4AltDev-Concept\Eng\map_docs\mxd\01EIS\Tech_Reports\NoiseandVibration\Vibration_Area3AB_Mapbook_11x17.mxd | Last Updated: 08.16.2017



0 250 500
 Feet
 1 inch = 500 feet
 @ 11 x 17 inches
 Projection: Lambert Conformal Conic
 State Plane Virginia North FIPS 4501 Feet
 North American Datum of 1983
 Imagery/Basemap Source: 2015 Bing
 Aerial Imagery; ESRI World Transportation

Legend

- Category 2 Vibration Impact Contour
- Category 3 Vibration Impact Contour
- Category 2 Vibration Impacts
- Category 3 Vibration Impacts
- CSXT Mileposts
- Track - Existing
- Stations
- Proposed Stations
- CSXT ROW (County Parcel Data)
- City/County Boundary

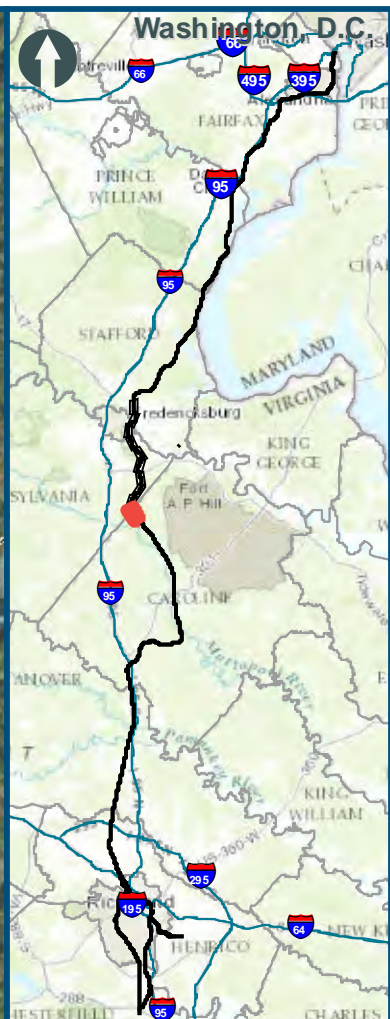
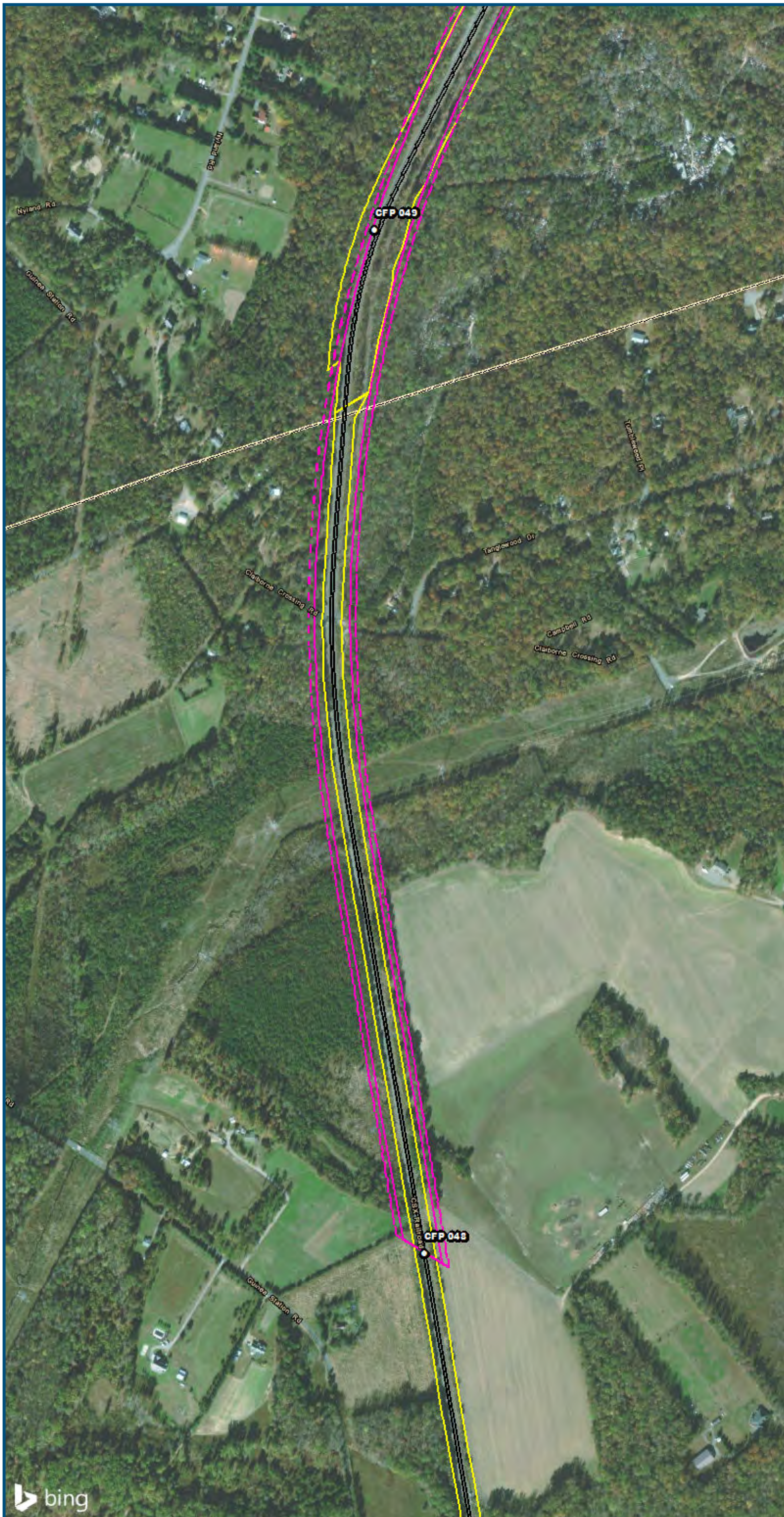
**Appendix Q
 Vibration Analysis
 Area 3A & 3B:
 Fredericksburg**

\\vlis-main\gis_data\GIS\Projects\0115-46_VA_Dep\toRail-Public\T_ransportation\0239056_RAPS-4\ITDev-Concept\Eng\map_docs\mxd\01EIS\Tech_Reports\Noise and Vibration\Vibration_Area3AB_Mapbook_11x17.mxd | Last Updated: 08/16/2017



www.DC2RVArail.com





0 250 500
 Feet
 1 inch = 500 feet
 @ 11 x 17 inches
 Projection: Lambert Conformal Conic
 State Plane Virginia North FIPS 4501 Feet
 North American Datum of 1983
 Imagery/Basemap Source: 2015 Bing
 Aerial Imagery; ESRI World Transportation

Legend

- Category 2 Vibration Impact Contour
- Category 3 Vibration Impact Contour
- Category 2 Vibration Impacts
- Category 3 Vibration Impacts
- CSXT Mileposts
- Track - Existing
- Stations
- Proposed Stations
- CSXT ROW (County Parcel Data)
- City/County Boundary

**Appendix Q
 Vibration Analysis
 Area 3A & 3B:
 Fredericksburg**



\\dcis-main\gis_data\GIS\Projects\0115-46_VA_Dep\toRails-Public\Transportation\0239056_RAPS-4\IT\Dev-Concept\Eng\map_docs\mxd\01EIS\Tech_Reports\Noise and Vibration\Vibration_Area3AB_Mapbook_11x17.mxd | Last Updated: 08/16/2017