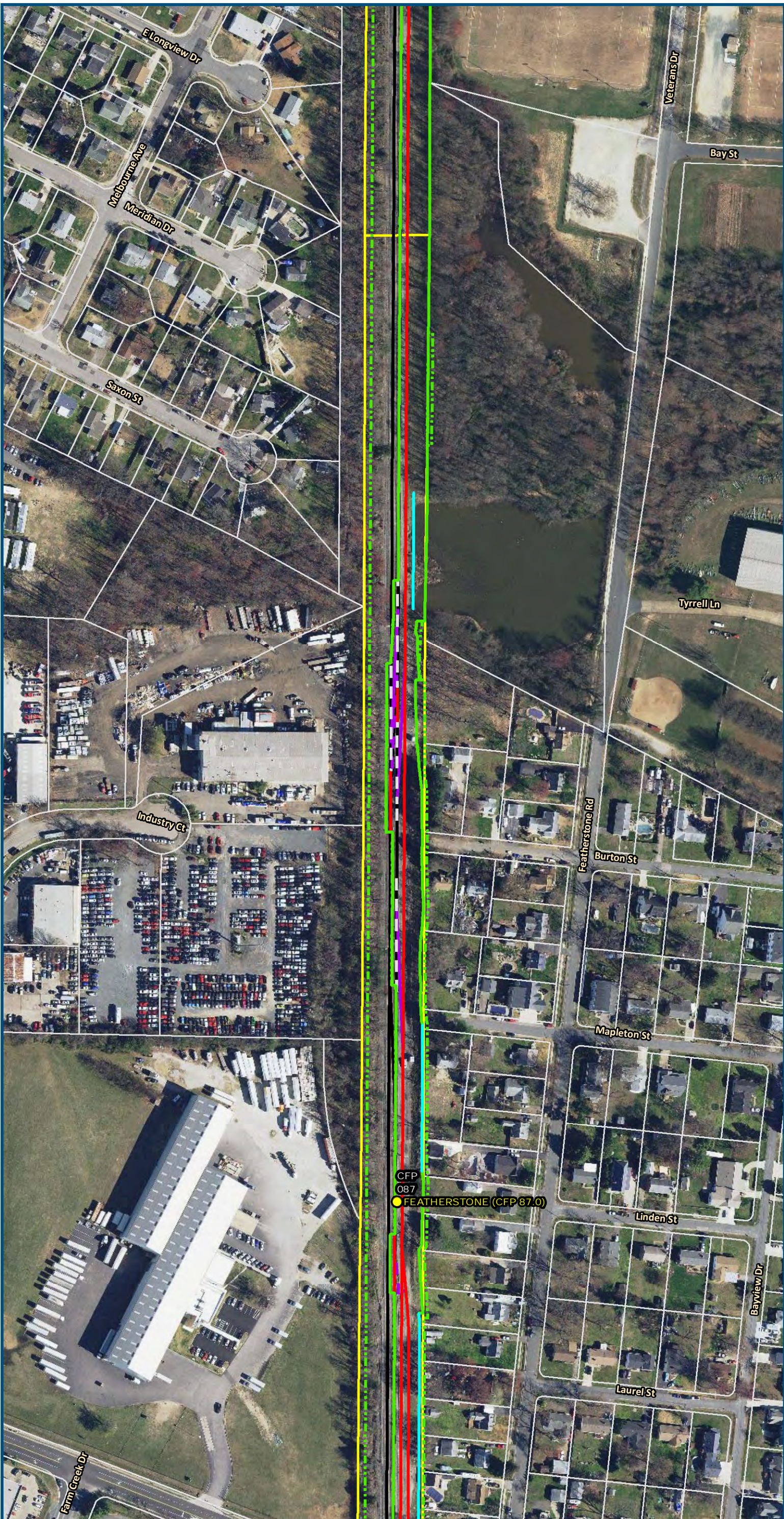


\\dlsmain\GIS_DATA\GIS\Projects\011545_VA Dept of Rail\Public Transportation\0239056_RAPS-4AltDev-Concept\Eng\map_docs\mxd\FEIS\PreAltMapbook\DC2RVA_FEISMapbook_Final_11x17.mxd | Last Updated: 03.13.2019



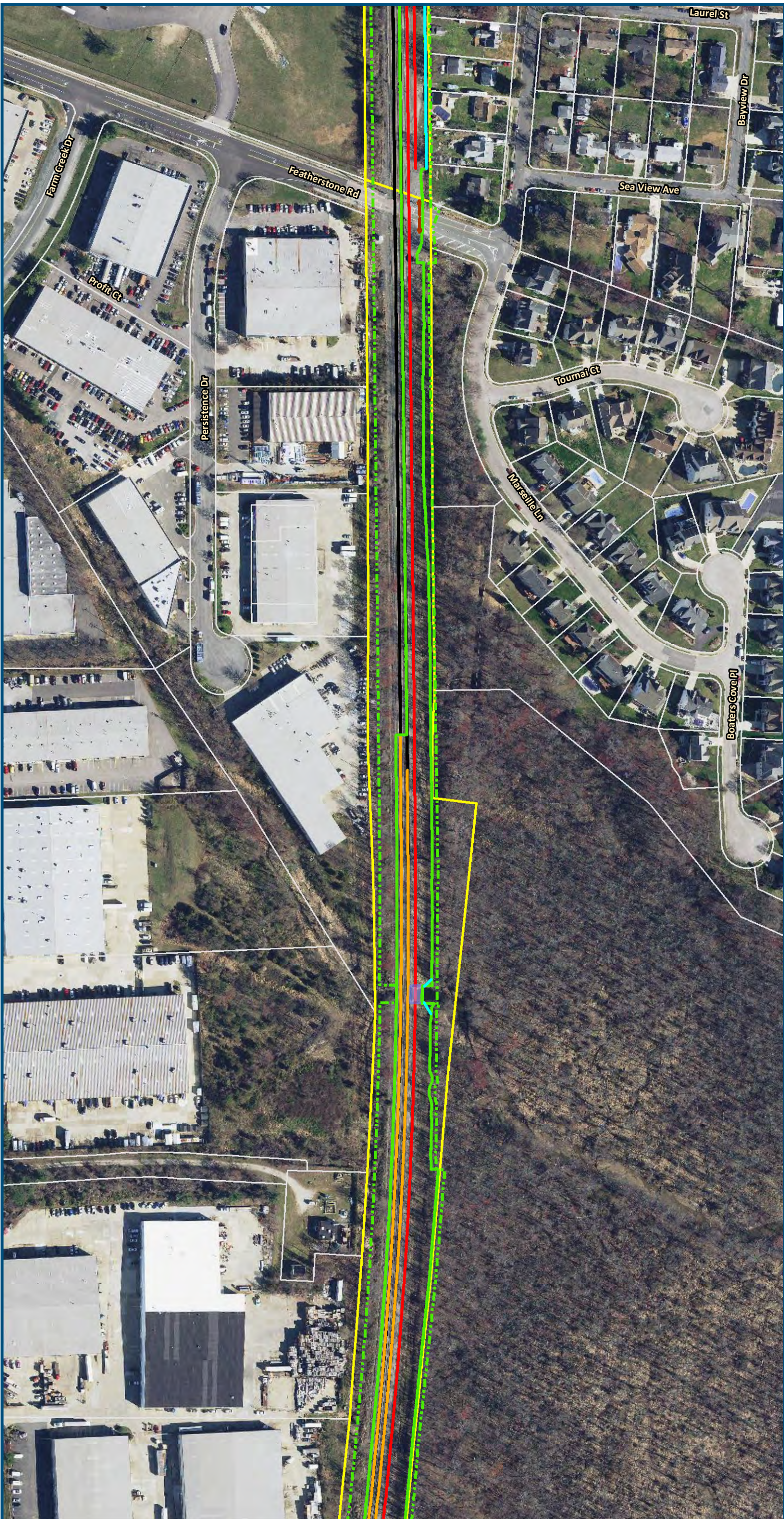
0 100 200
Feet
1 inch = 200 feet
@ 11 x 17 inches
Projection: Lambert Conformal Conic
State Plane Virginia North FIPS 4501 Feet
North American Datum of 1983
Imagery/Basemap Source: 2015-2017 VGIN
Aerial Imagery; ESRI World Transportation

- Legend**
- Permanent Limits of Disturbance
 - Temporary Limits of Disturbance
 - CSXT Mileposts
 - Control Point/Interlocking
 - Track - Existing
 - Track - Improve Existing
 - Track - Proposed
 - Track - Proposed by others
 - Track - Remove
 - Crossover/Turnout - Proposed
 - Crossover/Turnout - Proposed by others
 - Crossover/Turnout - Remove
 - Retaining Walls
 - Retaining Walls - Proposed by others
 - Bridge
 - Bridge - Proposed by others
 - Roadway
 - Roadway - Proposed by others
 - Edge of Pavement
 - Roadway Centerline
 - Median Separators
 - Gate/Quad Gate
 - Locking Gate
 - Crossing - Closure
 - Crossing - Grade Separate
 - Crossing - Four-Quadrant Gate
 - Crossing - Gates with Center Median Treatment
 - Crossing - Locking Gate (Private)
 - SWM Facilities
 - Drainage Culvert Crossings
 - Drainage Directional Arrows
 - Stations
 - Station Platform - Existing
 - Station Platform - Proposed
 - Station Platform - Proposed by others
 - Station Platform - Remove
 - Building/Structure
 - CSXT ROW (County Parcel Data)
 - City/County Parcels
 - City/County Boundary

**Preferred Alternative
Mapbook**

Sheet 26 of 217

\\dlsmain\GIS_DATA\GIS\Projects\11545_VA Dept of Rail-Public Transportation\0239056_RAPS-4AltDev-ConceptEng\map_docs\mxd\FEIS\PreAltMapbook\DC2RVA_FEISMapbook_Final_11x17.mxd | Last Updated: 03.13.2019



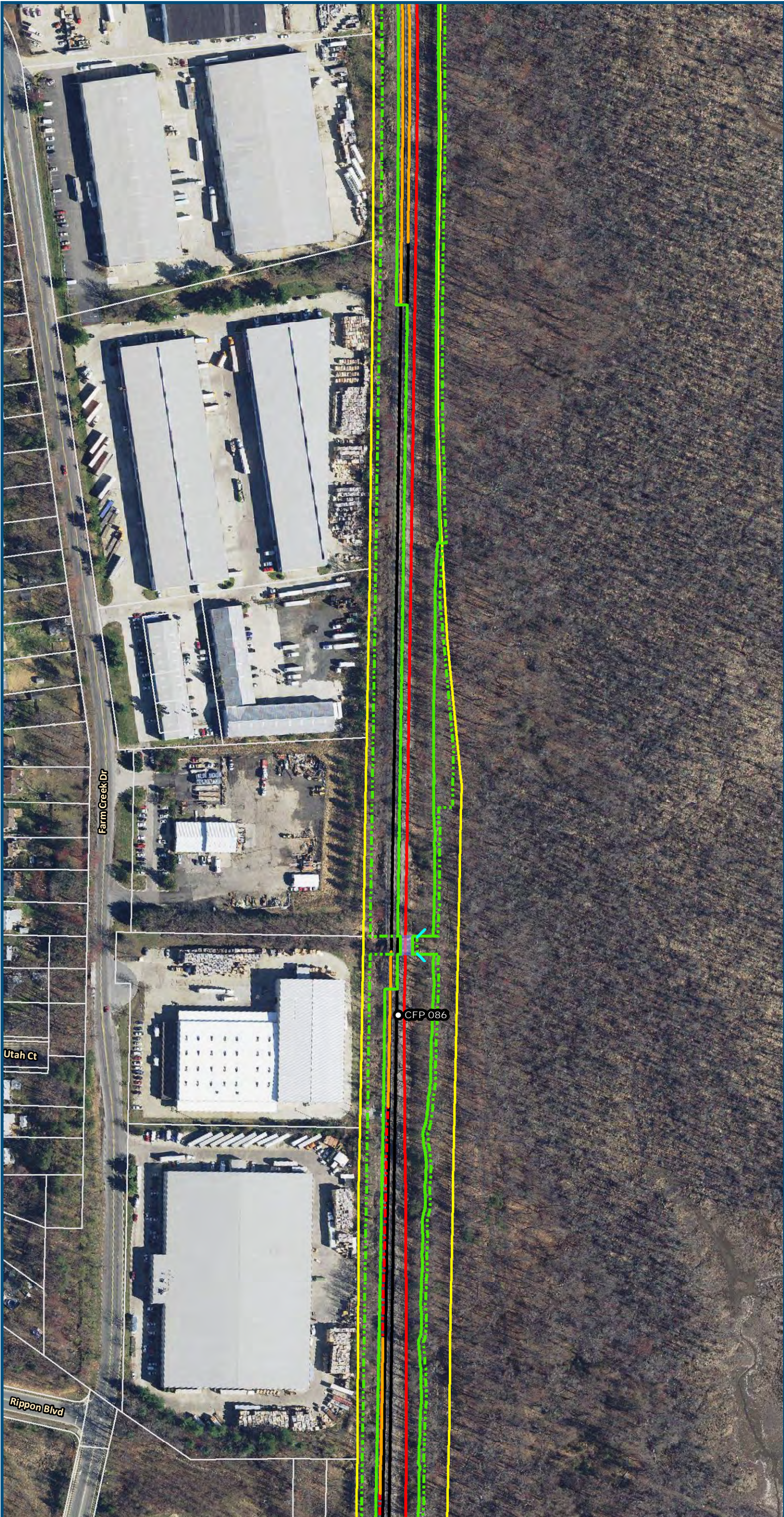
0 100 200
Feet
1 inch = 200 feet
@ 11 x 17 inches
Projection: Lambert Conformal Conic
State Plane Virginia North FIPS 4501 Feet
North American Datum of 1983
Imagery/Basemap Source: 2015-2017 VGIN
Aerial Imagery; ESRI World Transportation

- Legend**
- Permanent Limits of Disturbance
 - Temporary Limits of Disturbance
 - CSXT Mileposts
 - Control Point/Interlocking
 - Track - Existing
 - Track - Improve Existing
 - Track - Proposed
 - Track - Proposed by others
 - Track - Remove
 - Crossover/Turnout - Proposed
 - Crossover/Turnout - Proposed by others
 - Crossover/Turnout - Remove
 - Retaining Walls
 - Retaining Walls - Proposed by others
 - Bridge
 - Bridge - Proposed by others
 - Roadway
 - Roadway - Proposed by others
 - Edge of Pavement
 - Roadway Centerline
 - Median Separators
 - Gate/Quad Gate
 - Locking Gate
 - Crossing - Closure
 - Crossing - Grade Separate
 - Crossing - Four-Quadrant Gate
 - Crossing - Gates with Center Median Treatment
 - Crossing - Locking Gate (Private)
 - SWM Facilities
 - Drainage Culvert Crossings
 - Drainage Directional Arrows
 - Stations
 - Station Platform - Existing
 - Station Platform - Proposed
 - Station Platform - Proposed by others
 - Station Platform - Remove
 - Building/Structure
 - CSXT ROW (County Parcel Data)
 - City/County Parcels
 - City/County Boundary

**Preferred Alternative
Mapbook**

Sheet 27 of 217

\\dlsmain\GIS_DATA\GIS\Projects\011545_VA Dept of Rail-Public Transportation\0239056_RAPS-4AltDev-ConceptEng\map_docs\mxd\FEIS\PreAltMapbook\DC2RVA_FEISMapbook_Final_11x17.mxd | Last Updated: 03.13.2019



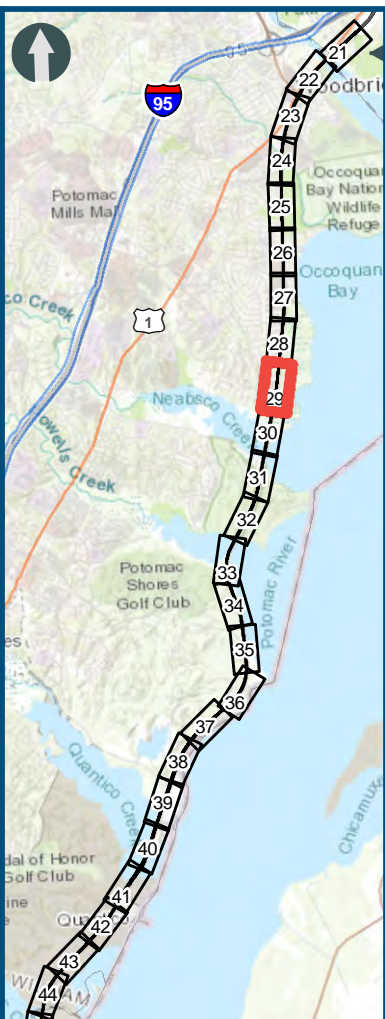
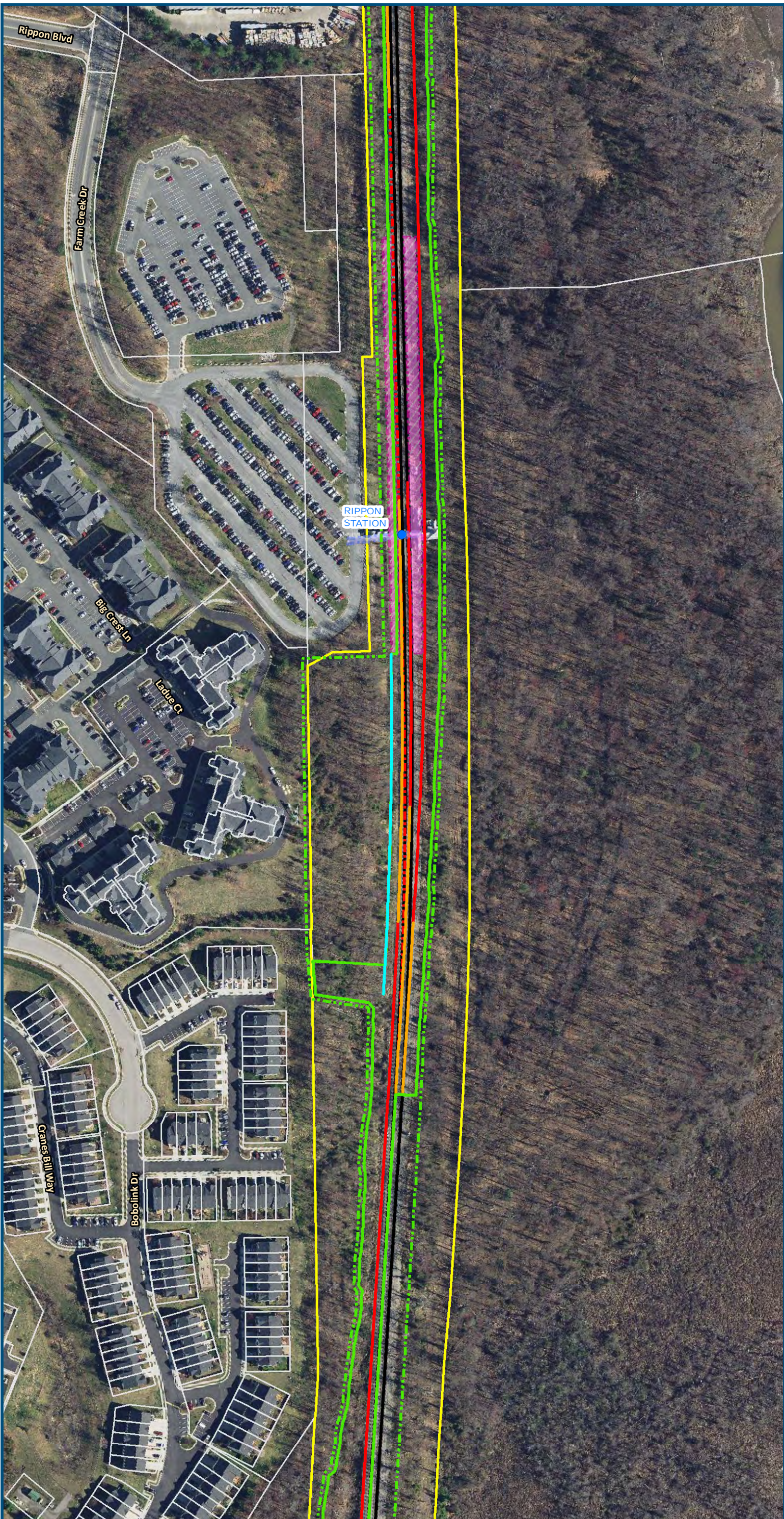
0 100 200
Feet
1 inch = 200 feet
@ 11 x 17 inches
Projection: Lambert Conformal Conic
State Plane Virginia North FIPS 4501 Feet
North American Datum of 1983
Imagery/Basemap Source: 2015-2017 VGIN
Aerial Imagery; ESRI World Transportation

- Legend**
- Permanent Limits of Disturbance
 - Temporary Limits of Disturbance
 - CSXT Mileposts
 - Control Point/Interlocking
 - Track - Existing
 - Track - Improve Existing
 - Track - Proposed
 - Track - Proposed by others
 - Track - Remove
 - Crossover/Turnout - Proposed
 - Crossover/Turnout - Proposed by others
 - Crossover/Turnout - Remove
 - Retaining Walls
 - Retaining Walls - Proposed by others
 - Bridge
 - Bridge - Proposed by others
 - Roadway
 - Roadway - Proposed by others
 - Edge of Pavement
 - Roadway Centerline
 - Median Separators
 - Gate/Quad Gate
 - Locking Gate
 - Crossing - Closure
 - Crossing - Grade Separate
 - Crossing - Four-Quadrant Gate
 - Crossing - Gates with Center Median Treatment
 - Crossing - Locking Gate (Private)
 - SWM Facilities
 - Drainage Culvert Crossings
 - Drainage Directional Arrows
 - Stations
 - Station Platform - Existing
 - Station Platform - Proposed
 - Station Platform - Proposed by others
 - Station Platform - Remove
 - Building/Structure
 - CSXT ROW (County Parcel Data)
 - City/County Parcels
 - City/County Boundary

**Preferred Alternative
Mapbook**

Sheet 28 of 217

\\dlsmain\GIS_DATA\GIS\Projects\011545_VA Dept of Rail\Public Transportation\0239056_RAPS-4\AI\Dev-Concept\Eng\map_docs\mxd\FEIS\PreAI\Mapbook\DC2RVA_FEISMapbook_Final_11x17.mxd | Last Updated: 03.13.2019



0 100 200
Feet

1 inch = 200 feet
@ 11 x 17 inches

Projection: Lambert Conformal Conic
State Plane Virginia North FIPS 4501 Feet
North American Datum of 1983

Imagery/Basemap Source: 2015-2017 VGIN
Aerial Imagery; ESRI World Transportation

Legend

- Permanent Limits of Disturbance
- Temporary Limits of Disturbance
- CSXT Mileposts
- Control Point/Interlocking
- Track - Existing
- Track - Improve Existing
- Track - Proposed
- Track - Proposed by others
- Track - Remove
- Crossover/Turnout - Proposed
- Crossover/Turnout - Proposed by others
- Crossover/Turnout - Remove
- Retaining Walls
- Retaining Walls - Proposed by others
- Bridge
- Bridge - Proposed by others
- Roadway
- Roadway - Proposed by others
- Edge of Pavement
- Roadway Centerline
- Median Separators
- Gate/Quad Gate
- Locking Gate
- Crossing - Closure
- Crossing - Grade Separate
- Crossing - Four-Quadrant Gate
- Crossing - Gates with Center Median Treatment
- Crossing - Locking Gate (Private)
- SWM Facilities
- Drainage Culvert Crossings
- Drainage Directional Arrows
- Stations
- Station Platform - Existing
- Station Platform - Proposed
- Station Platform - Proposed by others
- Station Platform - Remove
- Building/Structure
- CSXT ROW (County Parcel Data)
- City/County Parcels
- City/County Boundary

Preferred Alternative Mapbook

Sheet 29 of 217

\\dlsmain\GIS_DATA\GIS\Projects\011545_VA Dept of Rail\Public Transportation\0239056_RAPS-4\AltDev-Concept\Eng\map_docs\mxd\FEIS\PreAltMapbook\DC2RVA_FEISMapbook_Final_11x17.mxd | Last Updated: 03.13.2019



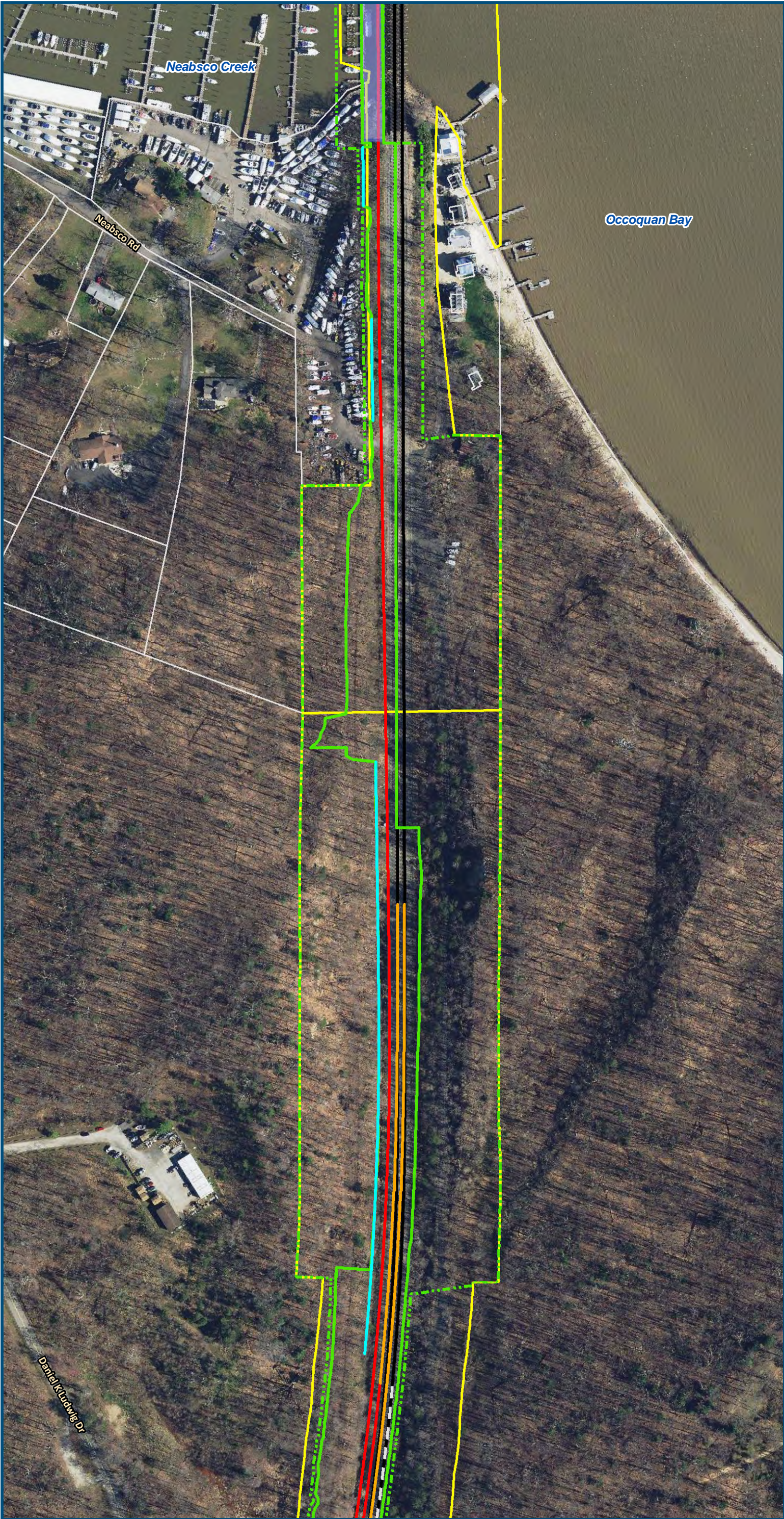
0 100 200
Feet
1 inch = 200 feet
@ 11 x 17 inches
Projection: Lambert Conformal Conic
State Plane Virginia North FIPS 4501 Feet
North American Datum of 1983
Imagery/Basemap Source: 2015-2017 VGIN
Aerial Imagery; ESRI World Transportation

Legend

- Permanent Limits of Disturbance
- Temporary Limits of Disturbance
- CSXT Mileposts
- Control Point/Interlocking
- Track - Existing
- Track - Improve Existing
- Track - Proposed
- Track - Proposed by others
- Track - Remove
- Crossover/Turnout - Proposed
- Crossover/Turnout - Proposed by others
- Crossover/Turnout - Remove
- Retaining Walls
- Retaining Walls - Proposed by others
- Bridge
- Bridge - Proposed by others
- Roadway
- Roadway - Proposed by others
- Edge of Pavement
- Roadway Centerline
- Median Separators
- Gate/Quad Gate
- Locking Gate
- Crossing - Closure
- Crossing - Grade Separate
- Crossing - Four-Quadrant Gate
- Crossing - Gates with Center Median Treatment
- Crossing - Locking Gate (Private)
- SWM Facilities
- Drainage Culvert Crossings
- Drainage Directional Arrows
- Stations
- Station Platform - Existing
- Station Platform - Proposed
- Station Platform - Proposed by others
- Station Platform - Remove
- Building/Structure
- CSXT ROW (County Parcel Data)
- City/County Parcels
- City/County Boundary

Preferred Alternative Mapbook

Sheet 30 of 217



0 100 200
Feet
1 inch = 200 feet
@ 11 x 17 inches
Projection: Lambert Conformal Conic
State Plane Virginia North FIPS 4501 Feet
North American Datum of 1983
Imagery/Basemap Source: 2015-2017 VGIN
Aerial Imagery; ESRI World Transportation

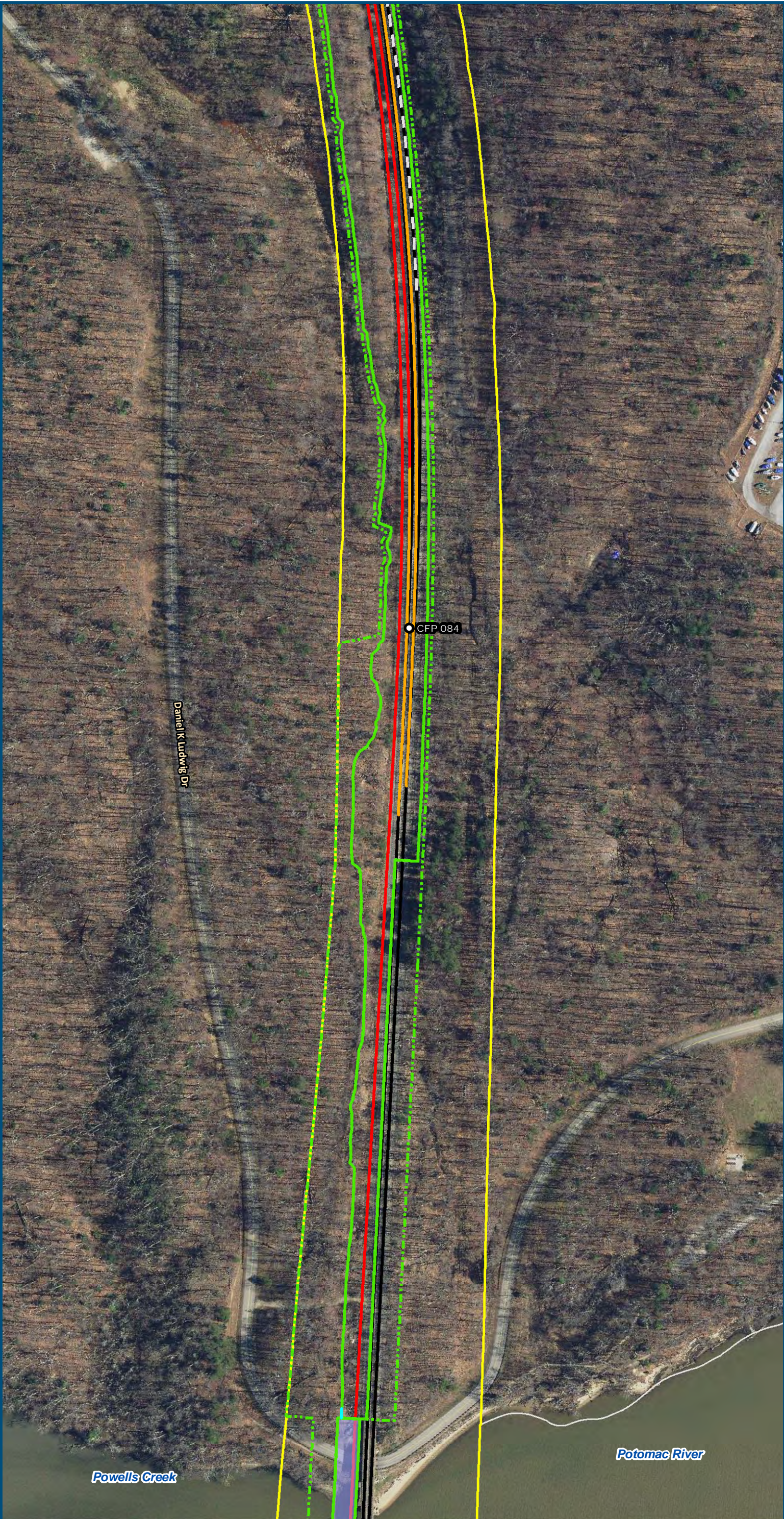
- Legend**
- Permanent Limits of Disturbance
 - Temporary Limits of Disturbance
 - CSXT Mileposts
 - Control Point/Interlocking
 - Track - Existing
 - Track - Improve Existing
 - Track - Proposed
 - Track - Proposed by others
 - Track - Remove
 - Crossover/Turnout - Proposed
 - Crossover/Turnout - Proposed by others
 - Crossover/Turnout - Remove
 - Retaining Walls
 - Retaining Walls - Proposed by others
 - Bridge
 - Bridge - Proposed by others
 - Roadway
 - Roadway - Proposed by others
 - Edge of Pavement
 - Roadway Centerline
 - Median Separators
 - Gate/Quad Gate
 - Locking Gate
 - Crossing - Closure
 - Crossing - Grade Separate
 - Crossing - Four-Quadrant Gate
 - Crossing - Gates with Center Median Treatment
 - Crossing - Locking Gate (Private)
 - SWM Facilities
 - Drainage Culvert Crossings
 - Drainage Directional Arrows
 - Stations
 - Station Platform - Existing
 - Station Platform - Proposed
 - Station Platform - Proposed by others
 - Station Platform - Remove
 - Building/Structure
 - CSXT ROW (County Parcel Data)
 - City/County Parcels
 - City/County Boundary

**Preferred Alternative
Mapbook**

Sheet 31 of 217

\\dlsmain\GIS_DATA\GIS\Projects\011545_VA Dept of Rail-Public Transportation\0239056_RAPS-4\AltDev-Concept\Eng\map_docs\mxd\FEIS\Pre\AltMapbook\DC2RVA_FEISMapbook_Final_11x17.mxd | Last Updated: 03.13.2019

\\dismain\GIS_DATA\GIS\Projects\011545_VA Dept of Rail\Public Transportation\0239056_RAPS-4\AI\Dev-Concept\Eng\map_docs\mxd\FEIS\PreAI\Mapbook\DC2RVA_FEISMapbook_Final_11x17.mxd | Last Updated: 03.13.2019



0 100 200
Feet
1 inch = 200 feet
@ 11 x 17 inches
Projection: Lambert Conformal Conic
State Plane Virginia North FIPS 4501 Feet
North American Datum of 1983
Imagery/Basemap Source: 2015-2017 VGIN
Aerial Imagery; ESRI World Transportation

Legend

- Permanent Limits of Disturbance
- Temporary Limits of Disturbance
- CSXT Mileposts
- Control Point/Interlocking
- Track - Existing
- Track - Improve Existing
- Track - Proposed
- Track - Proposed by others
- Track - Remove
- Crossover/Turnout - Proposed
- Crossover/Turnout - Proposed by others
- Crossover/Turnout - Remove
- Retaining Walls
- Retaining Walls - Proposed by others
- Bridge
- Bridge - Proposed by others
- Roadway
- Roadway - Proposed by others
- Edge of Pavement
- Roadway Centerline
- Median Separators
- Gate/Quad Gate
- Locking Gate
- Crossing - Closure
- Crossing - Grade Separate
- Crossing - Four-Quadrant Gate
- Crossing - Gates with Center Median Treatment
- Crossing - Locking Gate (Private)
- SWM Facilities
- Drainage Culvert Crossings
- Drainage Directional Arrows
- Stations
- Station Platform - Existing
- Station Platform - Proposed
- Station Platform - Proposed by others
- Station Platform - Remove
- Building/Structure
- CSXT ROW (County Parcel Data)
- City/County Parcels
- City/County Boundary

Preferred Alternative Mapbook

Sheet 32 of 217

\\dlsmain\GIS_DATA\GIS\Projects\11545_VA Dept of Rail-Public Transportation\0239056_RAPS-4\AltDev-Concept\Eng\map_docs\mxd\FEIS\PreAltMapbook\DC2RVA_FEISMapbook_Final_11x17.mxd | Last Updated: 03.13.2019



0 100 200
Feet

1 inch = 200 feet
@ 11 x 17 inches

Projection: Lambert Conformal Conic
State Plane Virginia North FIPS 4501 Feet
North American Datum of 1983

Imagery/Basemap Source: 2015-2017 VGIN
Aerial Imagery; ESRI World Transportation

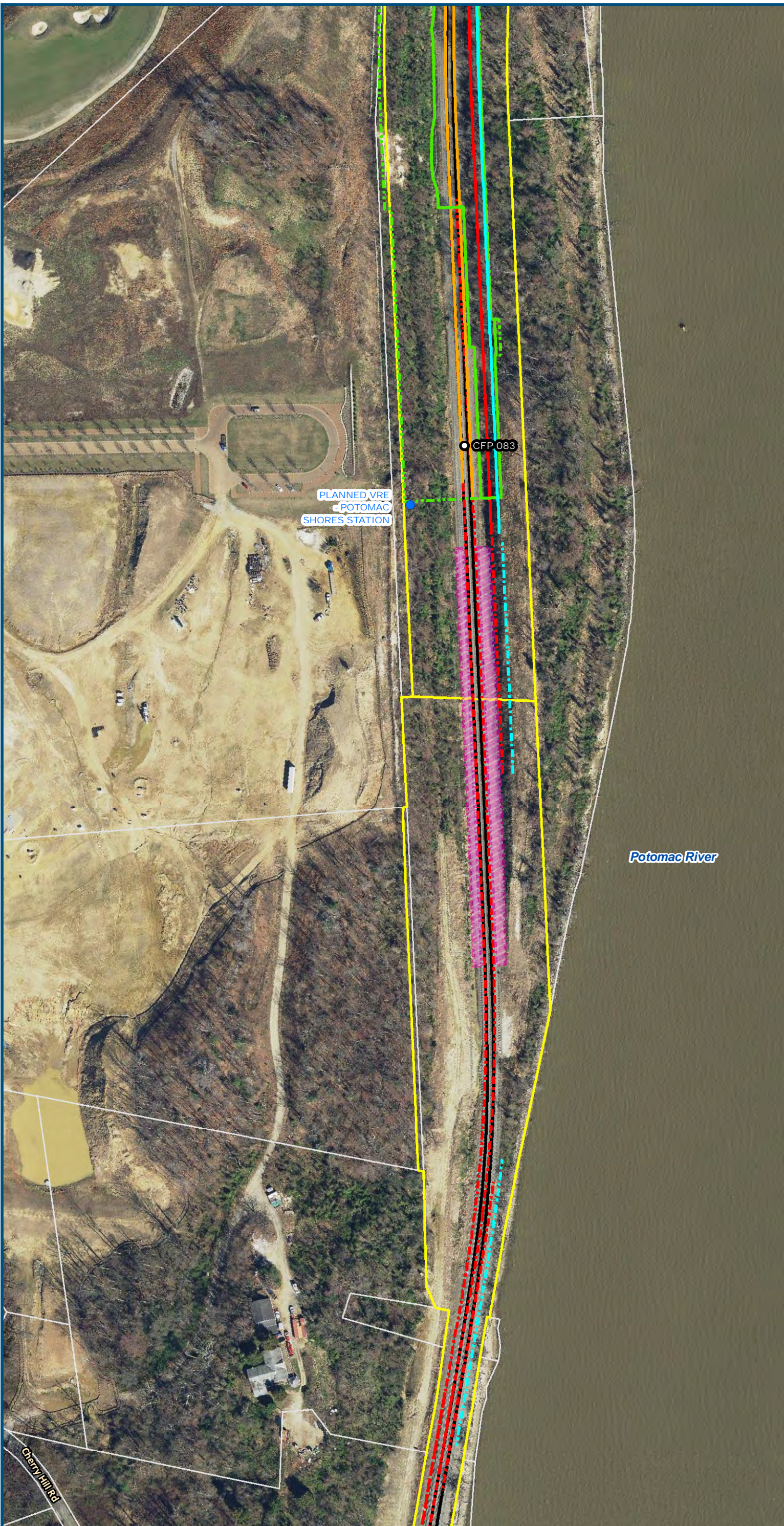
Legend

- Permanent Limits of Disturbance
- Temporary Limits of Disturbance
- CSXT Mileposts
- Control Point/Interlocking
- Track - Existing
- Track - Improve Existing
- Track - Proposed
- Track - Proposed by others
- Track - Remove
- Crossover/Turnout - Proposed
- Crossover/Turnout - Proposed by others
- Crossover/Turnout - Remove
- Retaining Walls
- Retaining Walls - Proposed by others
- Bridge
- Bridge - Proposed by others
- Roadway
- Roadway - Proposed by others
- Edge of Pavement
- Roadway Centerline
- Median Separators
- Gate/Quad Gate
- Locking Gate
- Crossing - Closure
- Crossing - Grade Separate
- Crossing - Four-Quadrant Gate
- Crossing - Gates with Center Median Treatment
- Crossing - Locking Gate (Private)
- SWM Facilities
- Drainage Culvert Crossings
- Drainage Directional Arrows
- Stations
- Station Platform - Existing
- Station Platform - Proposed
- Station Platform - Proposed by others
- Station Platform - Remove
- Building/Structure
- CSXT ROW (County Parcel Data)
- City/County Parcels
- City/County Boundary

Preferred Alternative Mapbook

Sheet 33 of 217

\\dlsmain\GIS_DATA\GIS\Projects\11545_VA Dept of Rail\Public Transportation\0239056_RAPS-4\AltDev-Concept\Eng\map_docs\mxd\FEIS\PreAltMapbook\DC2RVA_FEISMapbook_Final_11x17.mxd | Last Updated: 03.13.2019



0 100 200
Feet
1 inch = 200 feet
@ 11 x 17 inches
Projection: Lambert Conformal Conic
State Plane Virginia North FIPS 4501 Feet
North American Datum of 1983
Imagery/Basemap Source: 2015-2017 VGIN
Aerial Imagery; ESRI World Transportation

Legend

- Permanent Limits of Disturbance
- Temporary Limits of Disturbance
- CSXT Mileposts
- Control Point/Interlocking
- Track - Existing
- Track - Improve Existing
- Track - Proposed
- Track - Proposed by others
- Track - Remove
- Crossover/Turnout - Proposed
- Crossover/Turnout - Proposed by others
- Crossover/Turnout - Remove
- Retaining Walls
- Retaining Walls - Proposed by others
- Bridge
- Bridge - Proposed by others
- Roadway
- Roadway - Proposed by others
- Edge of Pavement
- Roadway Centerline
- Median Separators
- Gate/Quad Gate
- Locking Gate
- Crossing - Closure
- Crossing - Grade Separate
- Crossing - Four-Quadrant Gate
- Crossing - Gates with Center Median Treatment
- Crossing - Locking Gate (Private)
- SWM Facilities
- Drainage Culvert Crossings
- Drainage Directional Arrows
- Stations
- Station Platform - Existing
- Station Platform - Proposed
- Station Platform - Proposed by others
- Station Platform - Remove
- Building/Structure
- CSXT ROW (County Parcel Data)
- City/County Parcels
- City/County Boundary

Preferred Alternative Mapbook

Sheet 34 of 217

\\dismain\GIS_DATA\GIS\Projects\011545_VA Dept of Rail-Public Transportation\0239056_RAPS-4\AltDev-Concept\Eng\map_docs\mxd\FEIS\Pre\AltMapbook\DC2RVA_FEISMapbook_Final_11x17.mxd | Last Updated: 03.13.2019



0 100 200
Feet
1 inch = 200 feet
@ 11 x 17 inches
Projection: Lambert Conformal Conic
State Plane Virginia North FIPS 4501 Feet
North American Datum of 1983
Imagery/Basemap Source: 2015-2017 VGIN
Aerial Imagery; ESRI World Transportation

Legend

- Permanent Limits of Disturbance
- Temporary Limits of Disturbance
- CSXT Mileposts
- Control Point/Interlocking
- Track - Existing
- Track - Improve Existing
- Track - Proposed
- Track - Proposed by others
- Track - Remove
- Crossover/Turnout - Proposed
- Crossover/Turnout - Proposed by others
- Crossover/Turnout - Remove
- Retaining Walls
- Retaining Walls - Proposed by others
- Bridge
- Bridge - Proposed by others
- Roadway
- Roadway - Proposed by others
- Edge of Pavement
- Roadway Centerline
- Median Separators
- Gate/Quad Gate
- Locking Gate
- Crossing - Closure
- Crossing - Grade Separate
- Crossing - Four-Quadrant Gate
- Crossing - Gates with Center Median Treatment
- Crossing - Locking Gate (Private)
- SWM Facilities
- Drainage Culvert Crossings
- Drainage Directional Arrows
- Stations
- Station Platform - Existing
- Station Platform - Proposed
- Station Platform - Proposed by others
- Station Platform - Remove
- Building/Structure
- CSXT ROW (County Parcel Data)
- City/County Parcels
- City/County Boundary

Preferred Alternative Mapbook

Sheet 35 of 217

\\dlsmain\GIS_DATA\GIS\Projects\11545_VA Dept of Rails-Public\Transportation\0239056_RAPS-4\AI\Dev-Concept\Eng\map_docs\mxd\FEIS\Pre\AI\Mapbook\DC2RVA_FEISMapbook_Final_11x17.mxd | Last Updated: 03.13.2019



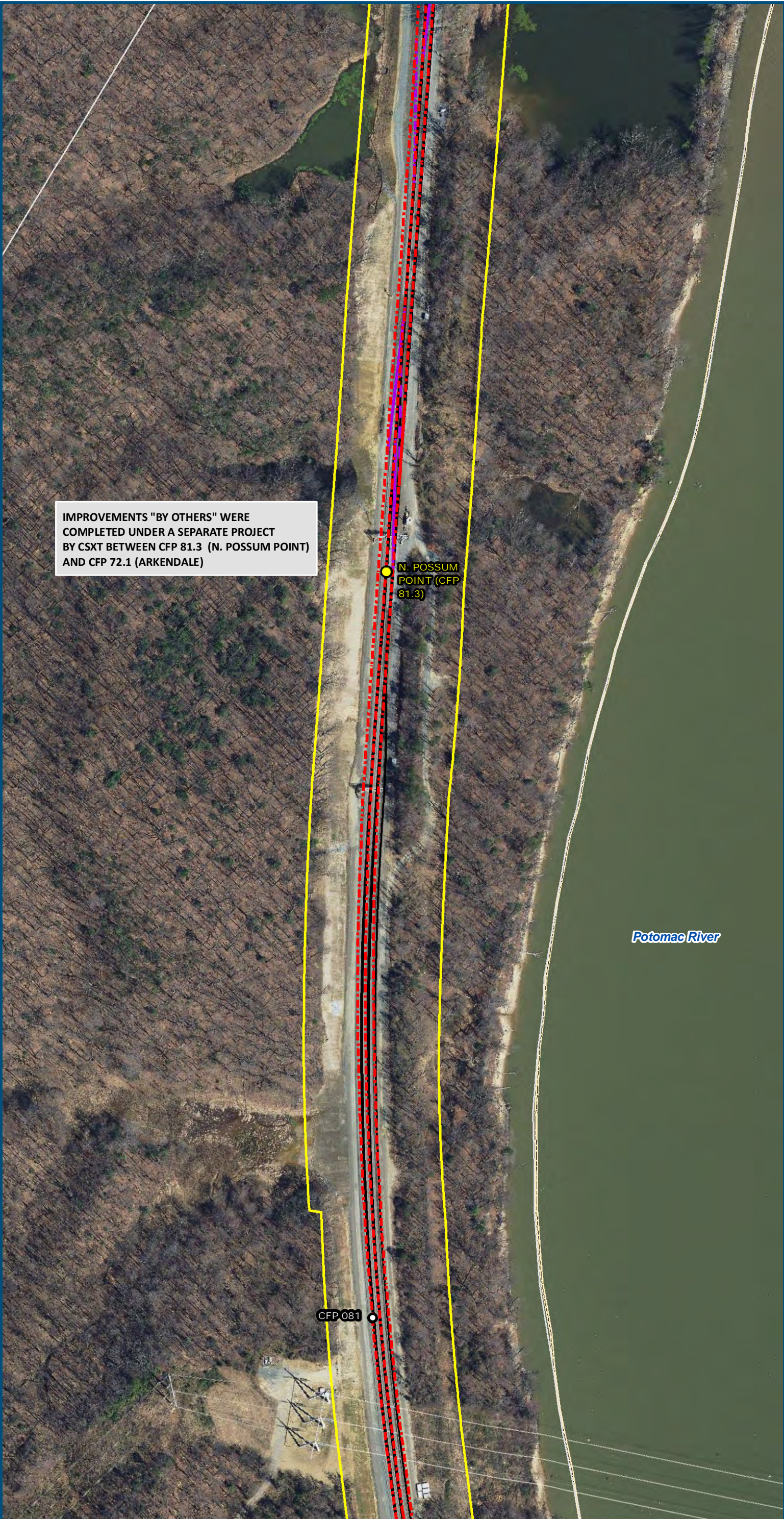
0 100 200
Feet
1 inch = 200 feet
@ 11 x 17 inches
Projection: Lambert Conformal Conic
State Plane Virginia North FIPS 4501 Feet
North American Datum of 1983
Imagery/Basemap Source: 2015-2017 VGIN
Aerial Imagery; ESRI World Transportation

- Legend**
- Permanent Limits of Disturbance
 - Temporary Limits of Disturbance
 - CSXT Mileposts
 - Control Point/Interlocking
 - Track - Existing
 - Track - Improve Existing
 - Track - Proposed
 - Track - Proposed by others
 - Track - Remove
 - Crossover/Turnout - Proposed
 - Crossover/Turnout - Proposed by others
 - Crossover/Turnout - Remove
 - Retaining Walls
 - Retaining Walls - Proposed by others
 - Bridge
 - Bridge - Proposed by others
 - Roadway
 - Roadway - Proposed by others
 - Edge of Pavement
 - Roadway Centerline
 - Median Separators
 - Gate/Quad Gate
 - Locking Gate
 - Crossing - Closure
 - Crossing - Grade Separate
 - Crossing - Four-Quadrant Gate
 - Crossing - Gates with Center Median Treatment
 - Crossing - Locking Gate (Private)
 - SWM Facilities
 - Drainage Culvert Crossings
 - Drainage Directional Arrows
 - Stations
 - Station Platform - Existing
 - Station Platform - Proposed
 - Station Platform - Proposed by others
 - Station Platform - Remove
 - Building/Structure
 - CSXT ROW (County Parcel Data)
 - City/County Parcels
 - City/County Boundary

**Preferred Alternative
Mapbook**

Sheet 36 of 217

\\dlsmain\GIS_DATA\GIS\Projects\011545_VA Dept of Rails-Public\Transportation\0239056_RAPS-4\AltDev-Concept\Eng\map_docs\mxd\FEIS\Pre\AltMapbook\DC2RVA_FEISMapbook_Final_11x17.mxd | Last Updated: 03.13.2019



IMPROVEMENTS "BY OTHERS" WERE COMPLETED UNDER A SEPARATE PROJECT BY CSXT BETWEEN CFP 81.3 (N. POSSUM POINT) AND CFP 72.1 (ARKENDALE)

N. POSSUM POINT (CFP 81.3)

CFP 081

Potomac River



0 100 200
Feet
1 inch = 200 feet
@ 11 x 17 inches
Projection: Lambert Conformal Conic
State Plane Virginia North FIPS 4501 Feet
North American Datum of 1983
Imagery/Basemap Source: 2015-2017 VGIN
Aerial Imagery; ESRI World Transportation

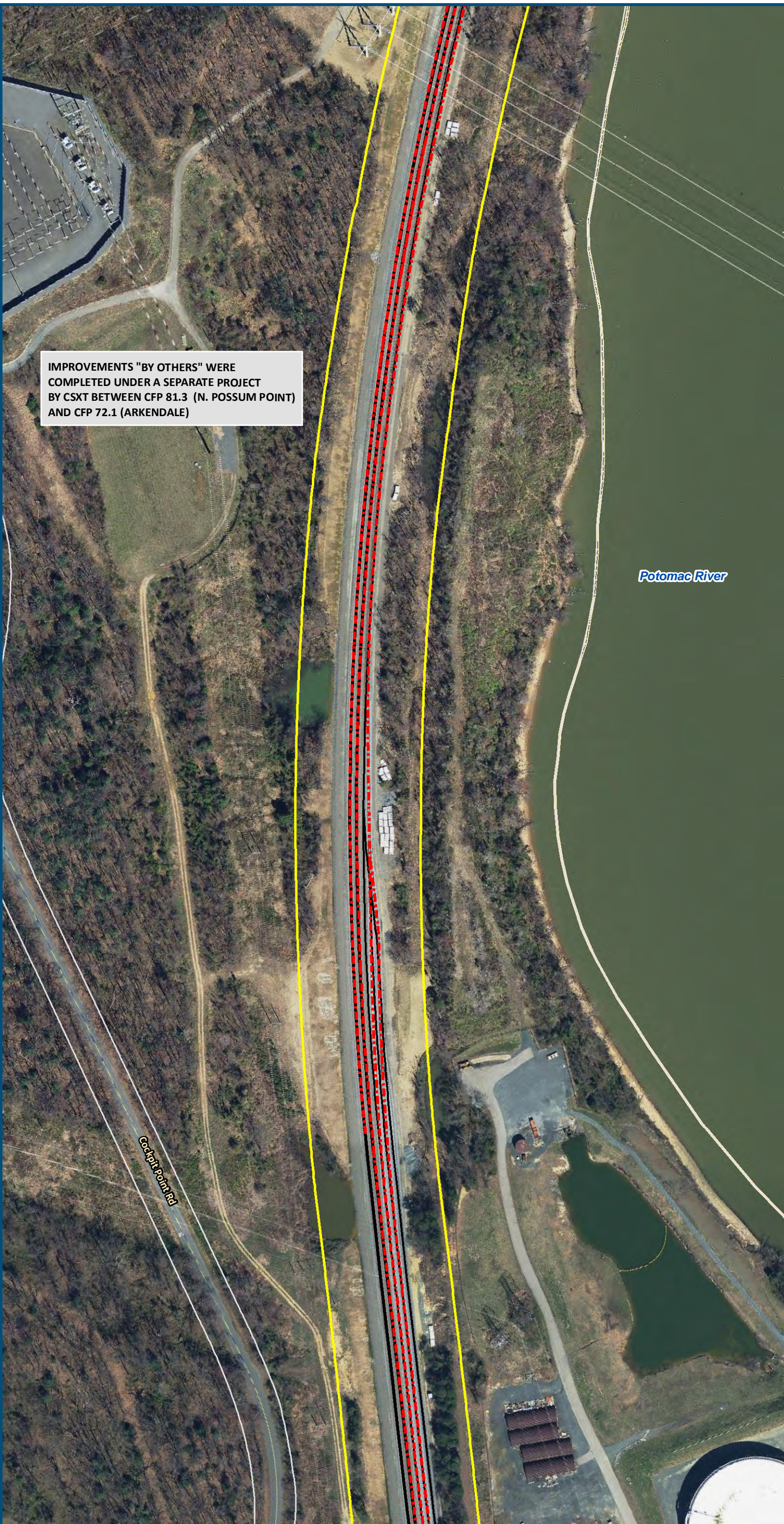
Legend

- Permanent Limits of Disturbance
- Temporary Limits of Disturbance
- CSXT Mileposts
- Control Point/Interlocking
- Track - Existing
- Track - Improve Existing
- Track - Proposed
- Track - Proposed by others
- Track - Remove
- Crossover/Turnout - Proposed
- Crossover/Turnout - Proposed by others
- Crossover/Turnout - Remove
- Retaining Walls
- Retaining Walls - Proposed by others
- Bridge
- Bridge - Proposed by others
- Roadway
- Roadway - Proposed by others
- Edge of Pavement
- Roadway Centerline
- Median Separators
- Gate/Quad Gate
- Locking Gate
- Crossing - Closure
- Crossing - Grade Separate
- Crossing - Four-Quadrant Gate
- Crossing - Gates with Center Median Treatment
- Crossing - Locking Gate (Private)
- SWM Facilities
- Drainage Culvert Crossings
- Drainage Directional Arrows
- Stations
- Station Platform - Existing
- Station Platform - Proposed
- Station Platform - Proposed by others
- Station Platform - Remove
- Building/Structure
- CSXT ROW (County Parcel Data)
- City/County Parcels
- City/County Boundary

Preferred Alternative
Mapbook

Sheet 37 of 217

\\dlsmain\GIS_DATA\GIS\Projects\11545_VA Dept of Rail-Public Transportation\0239056_RAPS-4\AltDev-Concept\Eng\map_docs\mxd\FEIS\PreAltMapbook\DC2RVA_FEISMapbook_Final_11x17.mxd | Last Updated: 03.13.2019



0 100 200
Feet
1 inch = 200 feet
@ 11 x 17 inches
Projection: Lambert Conformal Conic
State Plane Virginia North FIPS 4501 Feet
North American Datum of 1983
Imagery/Basemap Source: 2015-2017 VGIN
Aerial Imagery; ESRI World Transportation

Legend

- Permanent Limits of Disturbance
- Temporary Limits of Disturbance
- CSXT Mileposts
- Control Point/Interlocking
- Track - Existing
- Track - Improve Existing
- Track - Proposed
- Track - Proposed by others
- Track - Remove
- Crossover/Turnout - Proposed
- Crossover/Turnout - Proposed by others
- Crossover/Turnout - Remove
- Retaining Walls
- Retaining Walls - Proposed by others
- Bridge
- Bridge - Proposed by others
- Roadway
- Roadway - Proposed by others
- Edge of Pavement
- Roadway Centerline
- Median Separators
- Gate/Quad Gate
- Locking Gate
- Crossing - Closure
- Crossing - Grade Separate
- Crossing - Four-Quadrant Gate
- Crossing - Gates with Center Median Treatment
- Crossing - Locking Gate (Private)
- SWM Facilities
- Drainage Culvert Crossings
- Drainage Directional Arrows
- Stations
- Station Platform - Existing
- Station Platform - Proposed
- Station Platform - Proposed by others
- Station Platform - Remove
- Building/Structure
- CSXT ROW (County Parcel Data)
- City/County Parcels
- City/County Boundary

Preferred Alternative Mapbook

Sheet 38 of 217

IMPROVEMENTS "BY OTHERS" WERE COMPLETED UNDER A SEPARATE PROJECT BY CSXT BETWEEN CFP 81.3 (N. POSSUM POINT) AND CFP 72.1 (ARKENDALE)



1 inch = 200 feet
@ 11 x 17 inches

Projection: Lambert Conformal Conic
State Plane Virginia North FIPS 4501 Feet
North American Datum of 1983

Imagery/Basemap Source: 2015-2017 VGIN
Aerial Imagery; ESRI World Transportation

Legend

- Permanent Limits of Disturbance
- Temporary Limits of Disturbance
- CSXT Mileposts
- Control Point/Interlocking
- Track - Existing
- Track - Improve Existing
- Track - Proposed
- Track - Proposed by others
- Track - Remove
- Crossover/Turnout - Proposed
- Crossover/Turnout - Proposed by others
- Crossover/Turnout - Remove
- Retaining Walls
- Retaining Walls - Proposed by others
- Bridge
- Bridge - Proposed by others
- Roadway
- Roadway - Proposed by others
- Edge of Pavement
- Roadway Centerline
- Median Separators
- Gate/Quad Gate
- Locking Gate
- Crossing - Closure
- Crossing - Grade Separate
- Crossing - Four-Quadrant Gate
- Crossing - Gates with Center Median Treatment
- Crossing - Locking Gate (Private)
- SWM Facilities
- Drainage Culvert Crossings
- Drainage Directional Arrows
- Stations
- Station Platform - Existing
- Station Platform - Proposed
- Station Platform - Proposed by others
- Station Platform - Remove
- Building/Structure
- CSXT ROW (County Parcel Data)
- City/County Parcels
- City/County Boundary

Preferred Alternative Mapbook

Sheet 39 of 217

\\dlsmain\GIS_DATA\GIS\Projects\11545_VA Dept of Rail-Public Transportation\0239056_RAPS-4\AltDev-Concept\Eng\map_docs\mxd\FEIS\PreAltMapbook\DC2RVA_FEISMapbook_Final_11x17.mxd | Last Updated: 03.13.2019

IMPROVEMENTS "BY OTHERS" WERE COMPLETED UNDER A SEPARATE PROJECT BY CSXT BETWEEN CFP 81.3 (N. POSSUM POINT) AND CFP 72.1 (ARKENDALE)

POSSUM POINT
(CFP 79.7)

Quantico Creek

Potomac River

Potomac Point Rd



1 inch = 200 feet
@ 11 x 17 inches

Projection: Lambert Conformal Conic
State Plane Virginia North FIPS 4501 Feet
North American Datum of 1983
Imagery/Basemap Source: 2015-2017 VGIN
Aerial Imagery; ESRI World Transportation

Legend

- Permanent Limits of Disturbance
- Temporary Limits of Disturbance
- CSXT Mileposts
- Control Point/Interlocking
- Track - Existing
- Track - Improve Existing
- Track - Proposed
- Track - Proposed by others
- Track - Remove
- Crossover/Turnout - Proposed
- Crossover/Turnout - Proposed by others
- Crossover/Turnout - Remove
- Retaining Walls
- Retaining Walls - Proposed by others
- Bridge
- Bridge - Proposed by others
- Roadway
- Roadway - Proposed by others
- Edge of Pavement
- Roadway Centerline
- Median Separators
- Gate/Quad Gate
- Locking Gate
- Crossing - Closure
- Crossing - Grade Separate
- Crossing - Four-Quadrant Gate
- Crossing - Gates with Center Median Treatment
- Crossing - Locking Gate (Private)
- SWM Facilities
- Drainage Culvert Crossings
- Drainage Directional Arrows
- Stations
- Station Platform - Existing
- Station Platform - Proposed
- Station Platform - Proposed by others
- Station Platform - Remove
- Building/Structure
- CSXT ROW (County Parcel Data)
- City/County Parcels
- City/County Boundary

Preferred Alternative
Mapbook

Sheet 40 of 217

\\dismain\GIS_DATA\GIS\Projects\11545_VA Dept of Rails-Public\Transportation\0239056_RAPS-4AltDev-Concept\Eng\map_docs\mxd\FEIS\PreAltMapbook\DC2RVA_FEISMapbook_Final_11x17.mxd | Last Updated: 03.13.2019



IMPROVEMENTS "BY OTHERS" WERE COMPLETED UNDER A SEPARATE PROJECT BY CSXT BETWEEN CFP 81.3 (N. POSSUM POINT) AND CFP 72.1 (ARKENDALE)

Quantico
Creek

Potomac River

Little Rd

Louis Rd

Fuller Rd

Barnett Ave

Railroad Ave

C-St

2nd Ave

3rd Ave

4th Ave

Broadway St

Potomac Ave

Sluip St

Halyburton St

Willis St

CFP 079



0 100 200

Feet

1 inch = 200 feet
@ 11 x 17 inches

Projection: Lambert Conformal Conic
State Plane Virginia North FIPS 4501 Feet
North American Datum of 1983

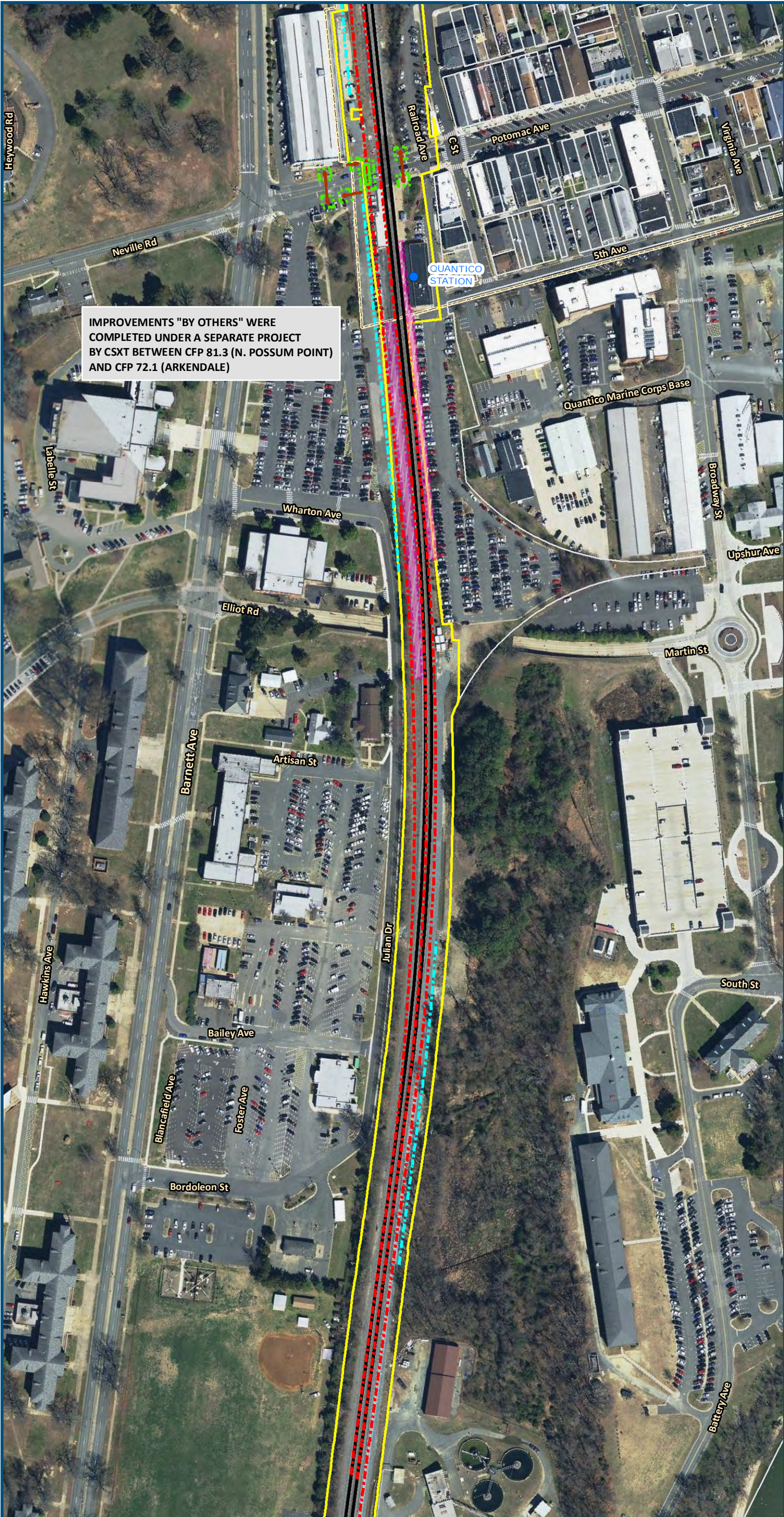
Imagery/Basemap Source: 2015-2017 VGIN
Aerial Imagery; ESRI World Transportation

Legend

- Permanent Limits of Disturbance
- Temporary Limits of Disturbance
- CSXT Mileposts
- Control Point/Interlocking
- Track - Existing
- Track - Improve Existing
- Track - Proposed
- Track - Proposed by others
- Track - Remove
- Crossover/Turnout - Proposed
- Crossover/Turnout - Proposed by others
- Crossover/Turnout - Remove
- Retaining Walls
- Retaining Walls - Proposed by others
- Bridge
- Bridge - Proposed by others
- Roadway
- Roadway - Proposed by others
- Edge of Pavement
- Roadway Centerline
- Median Separators
- Gate/Quad Gate
- Locking Gate
- Crossing - Closure
- Crossing - Grade Separate
- Crossing - Four-Quadrant Gate
- Crossing - Gates with Center Median Treatment
- Crossing - Locking Gate (Private)
- SWM Facilities
- Drainage Culvert Crossings
- Drainage Directional Arrows
- Stations
- Station Platform - Existing
- Station Platform - Proposed
- Station Platform - Proposed by others
- Station Platform - Remove
- Building/Structure
- CSXT ROW (County Parcel Data)
- City/County Parcels
- City/County Boundary

Preferred Alternative Mapbook

Sheet 41 of 217



0 100 200
Feet
1 inch = 200 feet
@ 11 x 17 inches
Projection: Lambert Conformal Conic
State Plane Virginia North FIPS 4501 Feet
North American Datum of 1983
Imagery/Basemap Source: 2015-2017 VGIN
Aerial Imagery; ESRI World Transportation

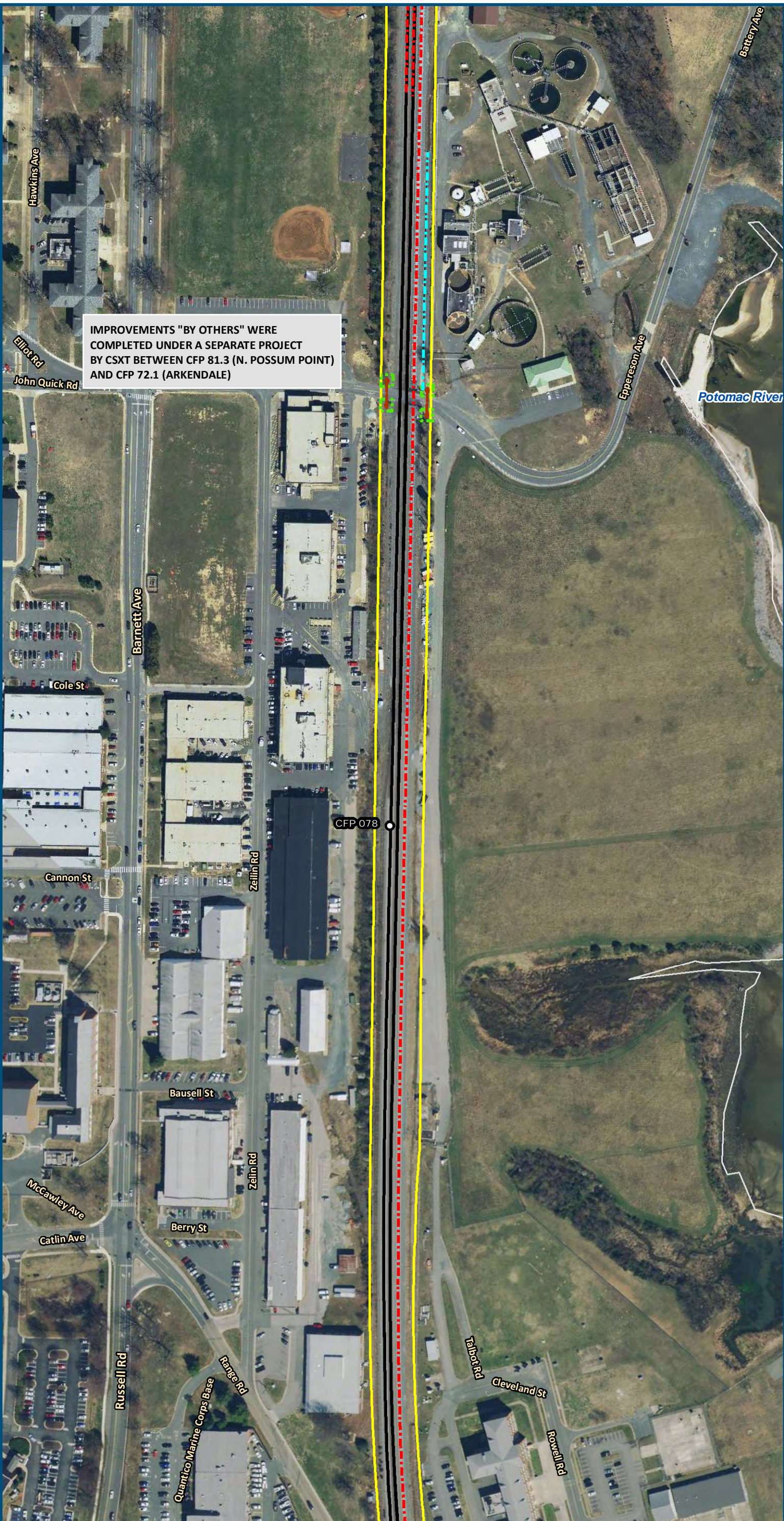
Legend

- Permanent Limits of Disturbance
- Temporary Limits of Disturbance
- CSXT Mileposts
- Control Point/Interlocking
- Track - Existing
- Track - Improve Existing
- Track - Proposed
- Track - Proposed by others
- Track - Remove
- Crossover/Turnout - Proposed
- Crossover/Turnout - Proposed by others
- Crossover/Turnout - Remove
- Retaining Walls
- Retaining Walls - Proposed by others
- Bridge
- Bridge - Proposed by others
- Roadway
- Roadway - Proposed by others
- Edge of Pavement
- Roadway Centerline
- Median Separators
- Gate/Quad Gate
- Locking Gate
- Crossing - Closure
- Crossing - Grade Separate
- Crossing - Four-Quadrant Gate
- Crossing - Gates with Center Median Treatment
- Crossing - Locking Gate (Private)
- SWM Facilities
- Drainage Culvert Crossings
- Drainage Directional Arrows
- Stations
- Station Platform - Existing
- Station Platform - Proposed
- Station Platform - Proposed by others
- Station Platform - Remove
- Building/Structure
- CSXT ROW (County Parcel Data)
- City/County Parcels
- City/County Boundary

Preferred Alternative Mapbook

Sheet 42 of 217

\\dlsmain\GIS_DATA\GIS\Projects\11545_VA Dept of Rail\Public Transportation\0239056_RAPS-4\AltDev-Concept\Eng\map_docs\mxd\FEIS\PreAltMapbook\DC2RVA_FEISMapbook_Final_11x17.mxd | Last Updated: 03.13.2019



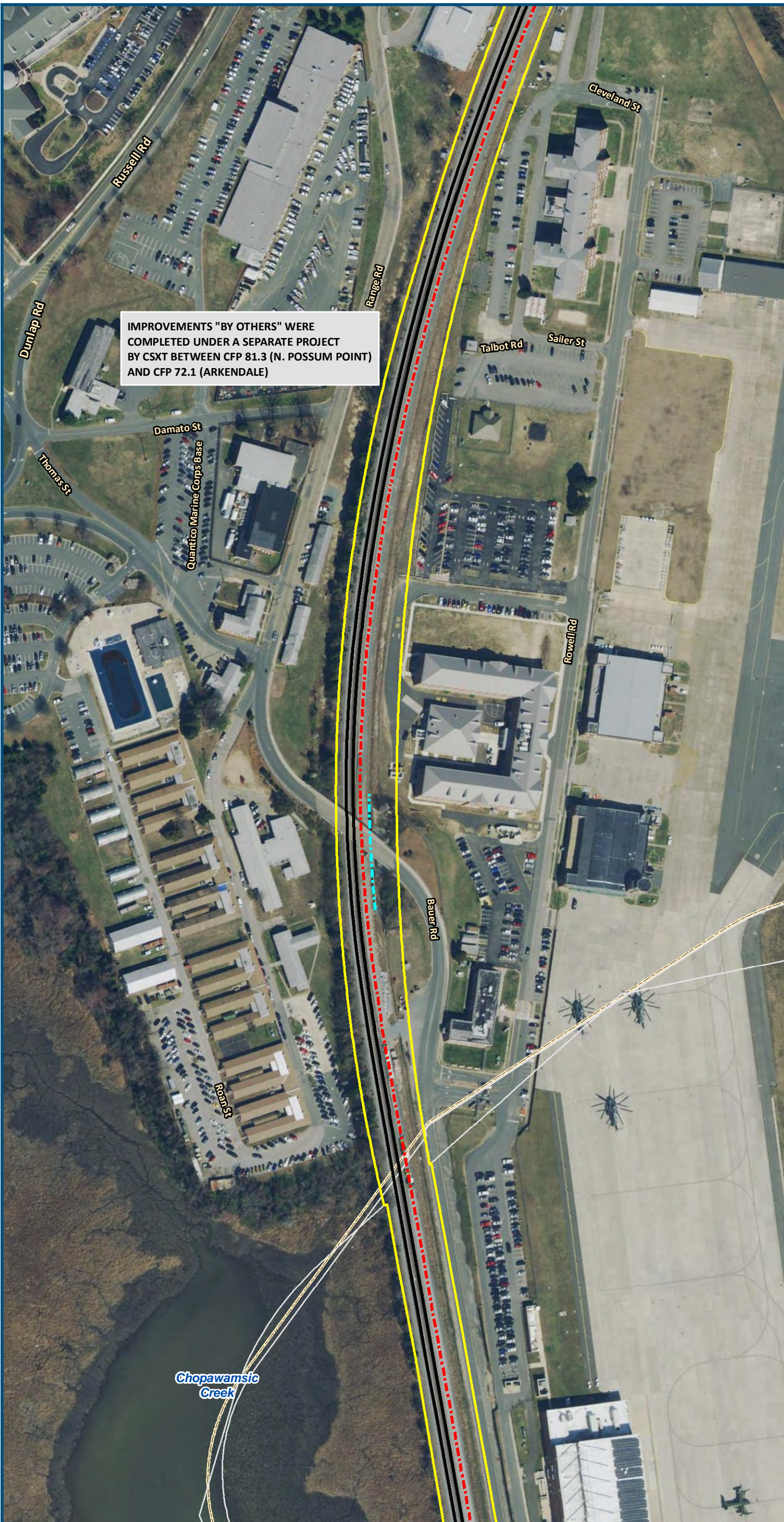
0 100 200
Feet
1 inch = 200 feet
@ 11 x 17 inches
Projection: Lambert Conformal Conic
State Plane Virginia North FIPS 4501 Feet
North American Datum of 1983
Imagery/Basemap Source: 2015-2017 VGIN
Aerial Imagery; ESRI World Transportation

- Legend**
- Permanent Limits of Disturbance
 - Temporary Limits of Disturbance
 - CSXT Mileposts
 - Control Point/Interlocking
 - Track - Existing
 - Track - Improve Existing
 - Track - Proposed
 - Track - Proposed by others
 - Track - Remove
 - Crossover/Turnout - Proposed
 - Crossover/Turnout - Proposed by others
 - Crossover/Turnout - Remove
 - Retaining Walls
 - Retaining Walls - Proposed by others
 - Bridge
 - Bridge - Proposed by others
 - Roadway
 - Roadway - Proposed by others
 - Edge of Pavement
 - Roadway Centerline
 - Median Separators
 - Gate/Quad Gate
 - Locking Gate
 - Crossing - Closure
 - Crossing - Grade Separate
 - Crossing - Four-Quadrant Gate
 - Crossing - Gates with Center Median Treatment
 - Crossing - Locking Gate (Private)
 - SWM Facilities
 - Drainage Culvert Crossings
 - Drainage Directional Arrows
 - Stations
 - Station Platform - Existing
 - Station Platform - Proposed
 - Station Platform - Proposed by others
 - Station Platform - Remove
 - Building/Structure
 - CSXT ROW (County Parcel Data)
 - City/County Parcels
 - City/County Boundary

**Preferred Alternative
Mapbook**

Sheet 43 of 217

\\dlsmain\GIS_DATA\GIS\Projects\11545_VA Dept of Rail\Public Transportation\0239056_RAPS-4\AltDev-Concept\Eng\map_docs\mxd\FEIS\PreAltMapbook\DC2RVA_FEISMapbook_Final_11x17.mxd | Last Updated: 03.13.2019



0 100 200
Feet
1 inch = 200 feet
@ 11 x 17 inches
Projection: Lambert Conformal Conic
State Plane Virginia North FIPS 4501 Feet
North American Datum of 1983
Imagery/Basemap Source: 2015-2017 VGIN
Aerial Imagery; ESRI World Transportation

Legend

- Permanent Limits of Disturbance
- Temporary Limits of Disturbance
- CSXT Mileposts
- Control Point/Interlocking
- Track - Existing
- Track - Improve Existing
- Track - Proposed
- Track - Proposed by others
- Track - Remove
- Crossover/Turnout - Proposed
- Crossover/Turnout - Proposed by others
- Crossover/Turnout - Remove
- Retaining Walls
- Retaining Walls - Proposed by others
- Bridge
- Bridge - Proposed by others
- Roadway
- Roadway - Proposed by others
- Edge of Pavement
- Roadway Centerline
- Median Separators
- Gate/Quad Gate
- Locking Gate
- Crossing - Closure
- Crossing - Grade Separate
- Crossing - Four-Quadrant Gate
- Crossing - Gates with Center Median Treatment
- Crossing - Locking Gate (Private)
- SWM Facilities
- Drainage Culvert Crossings
- Drainage Directional Arrows
- Stations
- Station Platform - Existing
- Station Platform - Proposed
- Station Platform - Proposed by others
- Station Platform - Remove
- Building/Structure
- CSXT ROW (County Parcel Data)
- City/County Parcels
- City/County Boundary

Preferred Alternative Mapbook

Sheet 44 of 217

IMPROVEMENTS "BY OTHERS" WERE COMPLETED UNDER A SEPARATE PROJECT BY CSXT BETWEEN CFP 81.3 (N. POSSUM POINT) AND CFP 72.1 (ARKENDALE)



1 inch = 200 feet
@ 11 x 17 inches

Projection: Lambert Conformal Conic
State Plane Virginia North FIPS 4501 Feet
North American Datum of 1983

Imagery/Basemap Source: 2015-2017 VGIN
Aerial Imagery; ESRI World Transportation

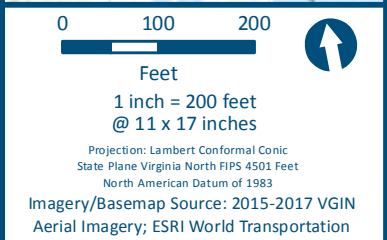
Legend

- Permanent Limits of Disturbance
- Temporary Limits of Disturbance
- CSXT Mileposts
- Control Point/Interlocking
- Track - Existing
- Track - Improve Existing
- Track - Proposed
- Track - Proposed by others
- Track - Remove
- Crossover/Turnout - Proposed
- Crossover/Turnout - Proposed by others
- Crossover/Turnout - Remove
- Retaining Walls
- Retaining Walls - Proposed by others
- Bridge
- Bridge - Proposed by others
- Roadway
- Roadway - Proposed by others
- Edge of Pavement
- Roadway Centerline
- Median Separators
- Gate/Quad Gate
- Locking Gate
- Crossing - Closure
- Crossing - Grade Separate
- Crossing - Four-Quadrant Gate
- Crossing - Gates with Center Median Treatment
- Crossing - Locking Gate (Private)
- SWM Facilities
- Drainage Culvert Crossings
- Drainage Directional Arrows
- Stations
- Station Platform - Existing
- Station Platform - Proposed
- Station Platform - Proposed by others
- Station Platform - Remove
- Building/Structure
- CSXT ROW (County Parcel Data)
- City/County Parcels
- City/County Boundary

Preferred Alternative Mapbook

Sheet 45 of 217

\\dlsmain\GIS_DATA\GIS\Projects\11545_VA Dept of Rail\Public\Transportation\0239056_RAPS-4\AI\Dev-Concept\Eng\map_docs\mxd\FEIS\PreA\Mapbook\DC2RVA_FEISMapbook_Final_11x17.mxd | Last Updated: 03.13.2019



- Legend**
- Permanent Limits of Disturbance
 - Temporary Limits of Disturbance
 - CSXT Mileposts
 - Control Point/Interlocking
 - Track - Existing
 - Track - Improve Existing
 - Track - Proposed
 - Track - Proposed by others
 - Track - Remove
 - Crossover/Turnout - Proposed
 - Crossover/Turnout - Proposed by others
 - Crossover/Turnout - Remove
 - Retaining Walls
 - Retaining Walls - Proposed by others
 - Bridge
 - Bridge - Proposed by others
 - Roadway
 - Roadway - Proposed by others
 - Edge of Pavement
 - Roadway Centerline
 - Median Separators
 - Gate/Quad Gate
 - Locking Gate
 - Crossing - Closure
 - Crossing - Grade Separate
 - Crossing - Four-Quadrant Gate
 - Crossing - Gates with Center Median Treatment
 - Crossing - Locking Gate (Private)
 - SWM Facilities
 - Drainage Culvert Crossings
 - Drainage Directional Arrows
 - Stations
 - Station Platform - Existing
 - Station Platform - Proposed
 - Station Platform - Proposed by others
 - Station Platform - Remove
 - Building/Structure
 - CSXT ROW (County Parcel Data)
 - City/County Parcels
 - City/County Boundary

**Preferred Alternative
Mapbook**

Sheet 46 of 217

\\dlsmain\GIS_DATA\GIS\Projects\011545_VA Dept of Railis-Public\Transportation\0239056_RAPS-4\AltDev-Concept\Eng\map_docs\mxd\FEIS\Pre\AltMapbook\DC2RVA_FEISMapbook_Final_11x17.mxd | Last Updated: 03.13.2019

IMPROVEMENTS "BY OTHERS" WERE COMPLETED UNDER A SEPARATE PROJECT BY CSXT BETWEEN CFP 81.3 (N. POSSUM POINT) AND CFP 72.1 (ARKENDALE)

CFP 076

Potomac River



0 100 200
Feet
1 inch = 200 feet
@ 11 x 17 inches
Projection: Lambert Conformal Conic
State Plane Virginia North FIPS 4501 Feet
North American Datum of 1983
Imagery/Basemap Source: 2015-2017 VGIN
Aerial Imagery; ESRI World Transportation

Legend

- Permanent Limits of Disturbance
- Temporary Limits of Disturbance
- CSXT Mileposts
- Control Point/Interlocking
- Track - Existing
- Track - Improve Existing
- Track - Proposed
- Track - Proposed by others
- Track - Remove
- Crossover/Turnout - Proposed
- Crossover/Turnout - Proposed by others
- Crossover/Turnout - Remove
- Retaining Walls
- Retaining Walls - Proposed by others
- Bridge
- Bridge - Proposed by others
- Roadway
- Roadway - Proposed by others
- Edge of Pavement
- Roadway Centerline
- Median Separators
- Gate/Quad Gate
- Locking Gate
- Crossing - Closure
- Crossing - Grade Separate
- Crossing - Four-Quadrant Gate
- Crossing - Gates with Center Median Treatment
- Crossing - Locking Gate (Private)
- SWM Facilities
- Drainage Culvert Crossings
- Drainage Directional Arrows
- Stations
- Station Platform - Existing
- Station Platform - Proposed
- Station Platform - Proposed by others
- Station Platform - Remove
- Building/Structure
- CSXT ROW (County Parcel Data)
- City/County Parcels
- City/County Boundary

Preferred Alternative
Mapbook

Sheet 47 of 217

\\dlsmain\GIS_DATA\GIS\Projects\011545_VA Dept of Rail - Public\Transportation\0239056_RAPS-4\AltDev-Concept\Eng\map_docs\mxd\FEIS\PreAltMapbook\DC2RVA_FEISMapbook_Final_11x17.mxd | Last Updated: 03.13.2019

IMPROVEMENTS "BY OTHERS" WERE COMPLETED UNDER A SEPARATE PROJECT BY CSXT BETWEEN CFP 81.3 (N. POSSUM POINT) AND CFP 72.1 (ARKENDALE)

Potomac River



0 100 200
Feet

1 inch = 200 feet
@ 11 x 17 inches

Projection: Lambert Conformal Conic
State Plane Virginia North FIPS 4501 Feet
North American Datum of 1983

Imagery/Basemap Source: 2015-2017 VGIN
Aerial Imagery; ESRI World Transportation

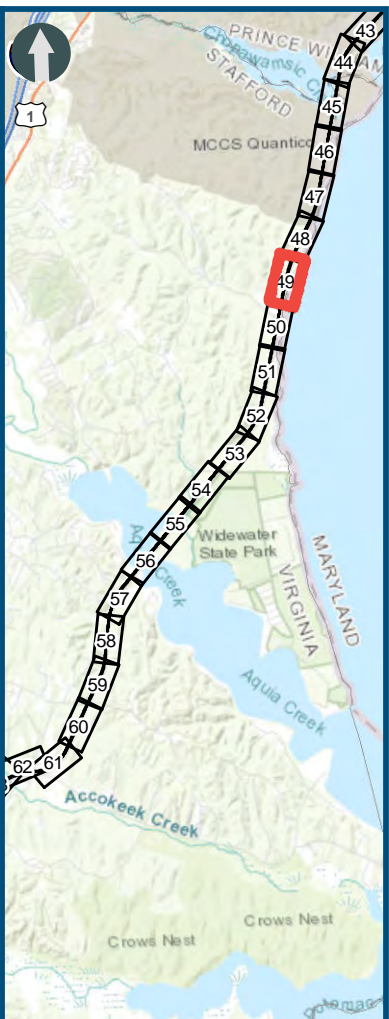
Legend

- Permanent Limits of Disturbance
- Temporary Limits of Disturbance
- CSXT Mileposts
- Control Point/Interlocking
- Track - Existing
- Track - Improve Existing
- Track - Proposed
- Track - Proposed by others
- Track - Remove
- Crossover/Turnout - Proposed
- Crossover/Turnout - Proposed by others
- Crossover/Turnout - Remove
- Retaining Walls
- Retaining Walls - Proposed by others
- Bridge
- Bridge - Proposed by others
- Roadway
- Roadway - Proposed by others
- Edge of Pavement
- Roadway Centerline
- Median Separators
- Gate/Quad Gate
- Locking Gate
- Crossing - Closure
- Crossing - Grade Separate
- Crossing - Four-Quadrant Gate
- Crossing - Gates with Center Median Treatment
- Crossing - Locking Gate (Private)
- SWM Facilities
- Drainage Culvert Crossings
- Drainage Directional Arrows
- Stations
- Station Platform - Existing
- Station Platform - Proposed
- Station Platform - Proposed by others
- Station Platform - Remove
- Building/Structure
- CSXT ROW (County Parcel Data)
- City/County Parcels
- City/County Boundary

Preferred Alternative
Mapbook

Sheet 48 of 217

\\dlsmain\GIS_DATA\GIS\Projects\011545_VA\DeptofRails-PublicTransportation\0239056_RAPS-4\AltDev-ConceptEng\map_docs\mxd\FEIS\PreA\Mapbook\DC2RVA_FEISMapbook_Final_11x17.mxd | Last Updated: 03.13.2019



0 100 200
Feet

1 inch = 200 feet
@ 11 x 17 inches

Projection: Lambert Conformal Conic
State Plane Virginia North FIPS 4501 Feet
North American Datum of 1983

Imagery/Basemap Source: 2015-2017 VGIN
Aerial Imagery; ESRI World Transportation

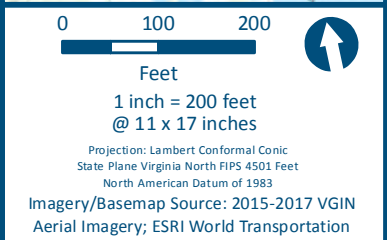
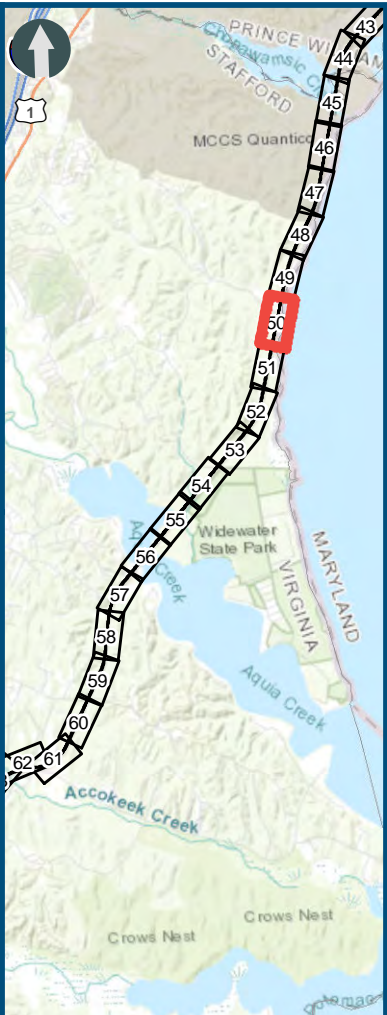
Legend

- Permanent Limits of Disturbance
- Temporary Limits of Disturbance
- CSXT Mileposts
- Control Point/Interlocking
- Track - Existing
- Track - Improve Existing
- Track - Proposed
- Track - Proposed by others
- Track - Remove
- Crossover/Turnout - Proposed
- Crossover/Turnout - Proposed by others
- Crossover/Turnout - Remove
- Retaining Walls
- Retaining Walls - Proposed by others
- Bridge
- Bridge - Proposed by others
- Roadway
- Roadway - Proposed by others
- Edge of Pavement
- Roadway Centerline
- Median Separators
- Gate/Quad Gate
- Locking Gate
- Crossing - Closure
- Crossing - Grade Separate
- Crossing - Four-Quadrant Gate
- Crossing - Gates with Center Median Treatment
- Crossing - Locking Gate (Private)
- SWM Facilities
- Drainage Culvert Crossings
- Drainage Directional Arrows
- Stations
- Station Platform - Existing
- Station Platform - Proposed
- Station Platform - Proposed by others
- Station Platform - Remove
- Building/Structure
- CSXT ROW (County Parcel Data)
- City/County Parcels
- City/County Boundary

Preferred Alternative Mapbook

Sheet 49 of 217

\\dlsmain\GIS_DATA\GIS\Projects\011545_VA Dept of Rail\PublicTransportation\0239056_RAPS-4\AltDev-Concept\Eng\map_docs\mxd\FEIS\PreAltMapbook\DC2RVA_FEISMapbook_Final_11x17.mxd | Last Updated: 03.13.2019



Legend

- Permanent Limits of Disturbance
- Temporary Limits of Disturbance
- CSXT Mileposts
- Control Point/Interlocking
- Track - Existing
- Track - Improve Existing
- Track - Proposed
- Track - Proposed by others
- Track - Remove
- Crossover/Turnout - Proposed
- Crossover/Turnout - Proposed by others
- Crossover/Turnout - Remove
- Retaining Walls
- Retaining Walls - Proposed by others
- Bridge
- Bridge - Proposed by others
- Roadway
- Roadway - Proposed by others
- Edge of Pavement
- Roadway Centerline
- Median Separators
- Gate/Quad Gate
- Locking Gate
- Crossing - Closure
- Crossing - Grade Separate
- Crossing - Four-Quadrant Gate
- Crossing - Gates with Center Median Treatment
- Crossing - Locking Gate (Private)
- SWM Facilities
- Drainage Culvert Crossings
- Drainage Directional Arrows
- Stations
- Station Platform - Existing
- Station Platform - Proposed
- Station Platform - Proposed by others
- Station Platform - Remove
- Building/Structure
- CSXT ROW (County Parcel Data)
- City/County Parcels
- City/County Boundary

Preferred Alternative
Mapbook

Sheet 50 of 217