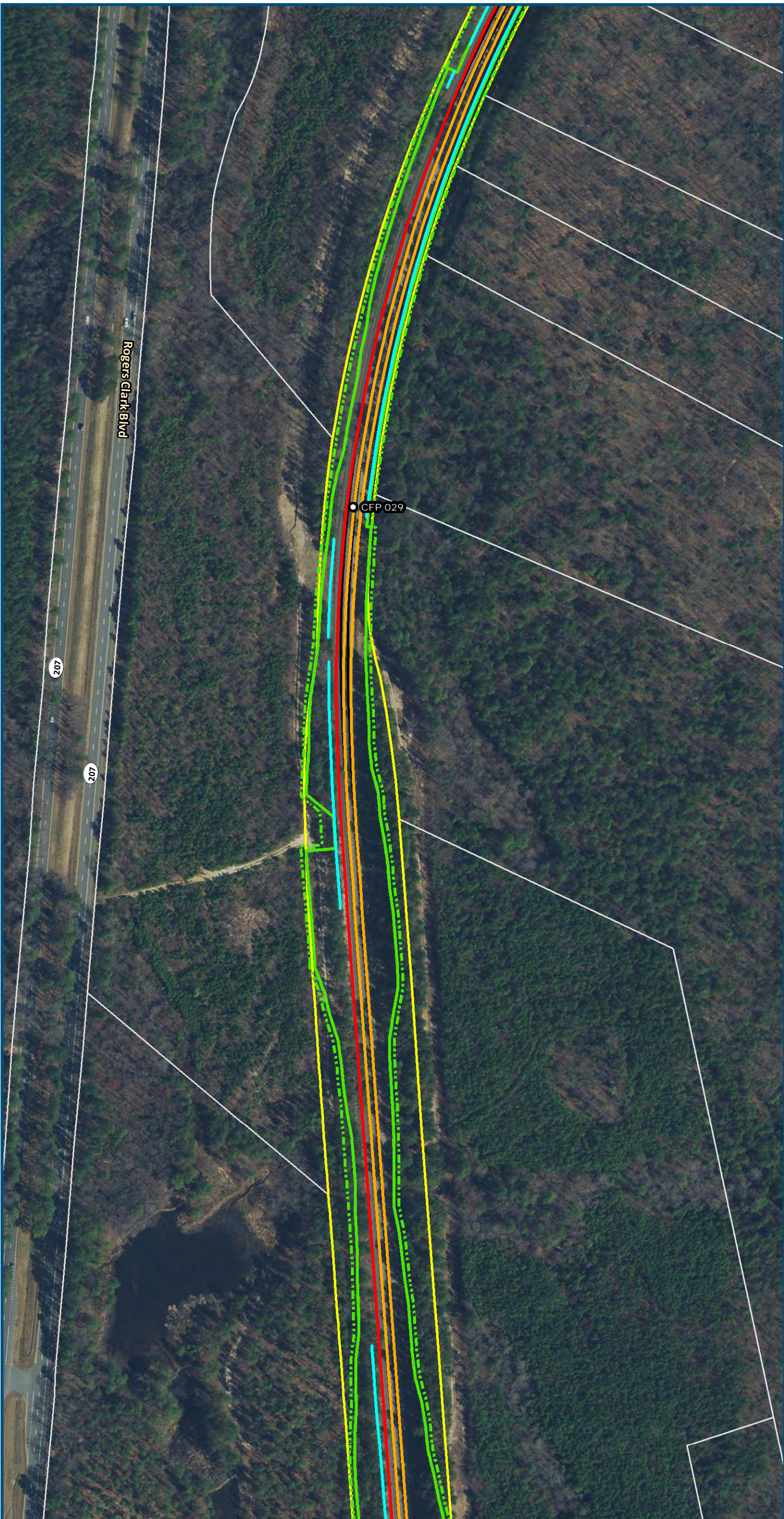


\\dlsmain\GIS_DATA\GIS\Projects\011545_VA Dept of Railis-Public\Transportation\0239056_RAPS-4AltDev-Concept\Eng\map_docs\mxd\FEIS\PreAltMapbook\DC2RVA_FEISMapbook_Final_11x17.mxd | Last Updated: 03.13.2019



Feet
1 inch = 200 feet
@ 11 x 17 inches

Projection: Lambert Conformal Conic
State Plane Virginia North FIPS 4501 Feet
North American Datum of 1983
Imagery/Basemap Source: 2015-2017 VGIN
Aerial Imagery; ESRI World Transportation

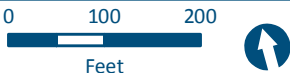
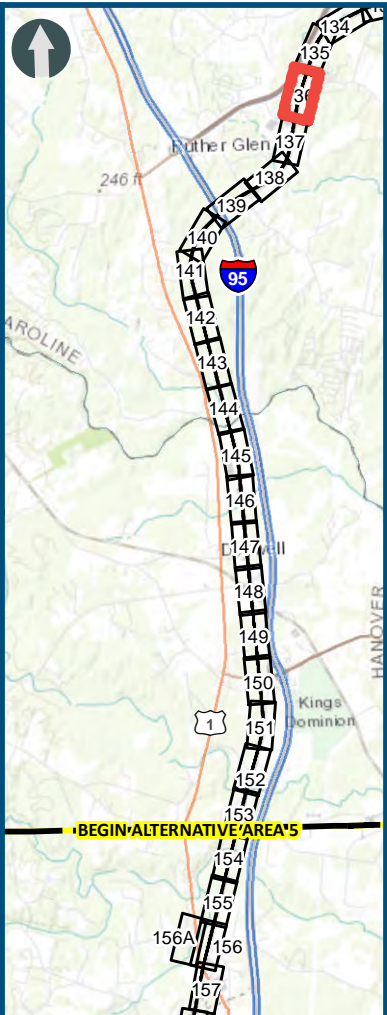
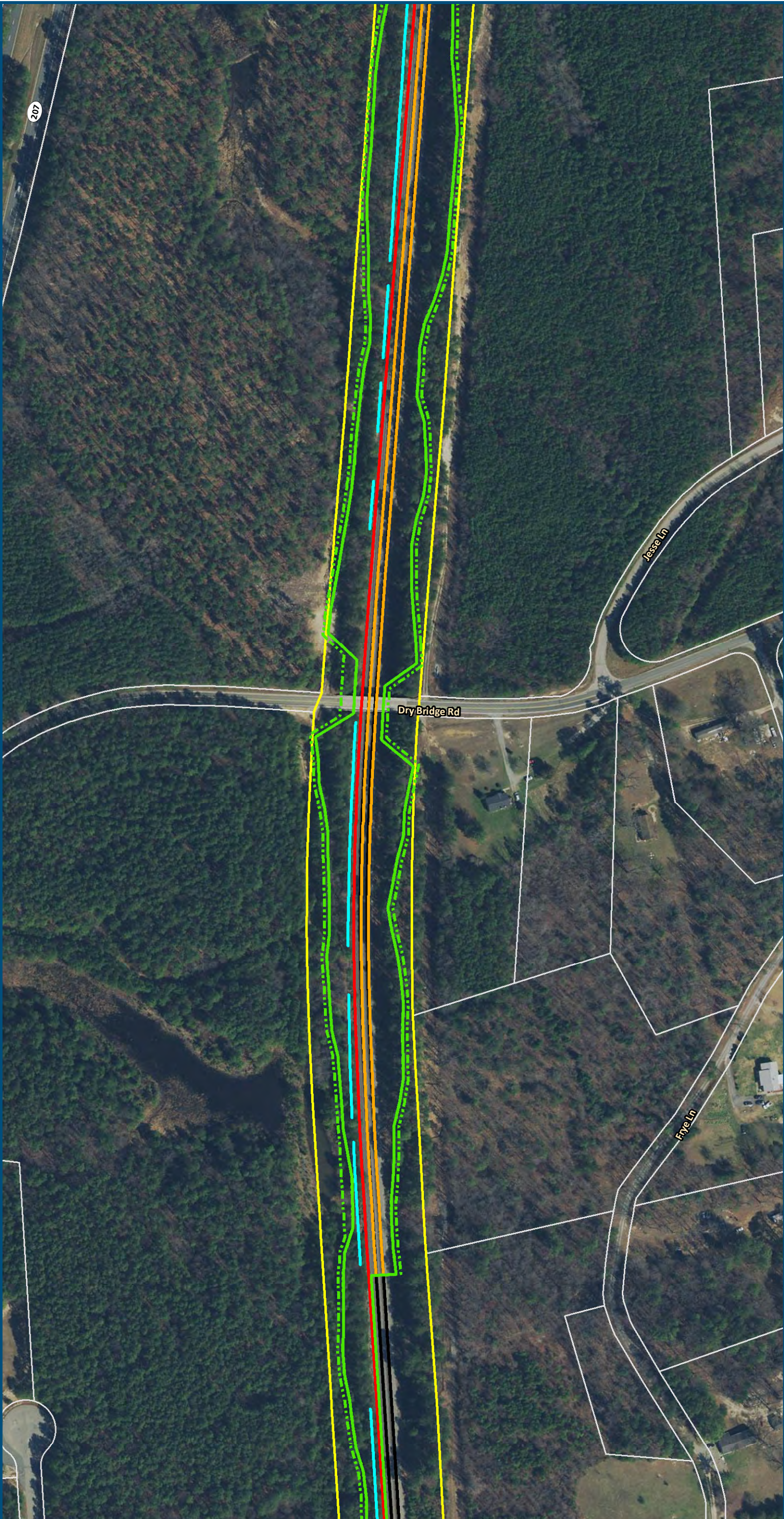
Legend

- Permanent Limits of Disturbance
- Temporary Limits of Disturbance
- CSXT Mileposts
- Control Point/Interlocking
- Track - Existing
- Track - Improve Existing
- Track - Proposed
- Track - Proposed by others
- Track - Remove
- Crossover/Turnout - Proposed
- Crossover/Turnout - Proposed by others
- Crossover/Turnout - Remove
- Retaining Walls
- Retaining Walls - Proposed by others
- Bridge
- Bridge - Proposed by others
- Roadway
- Roadway - Proposed by others
- Edge of Pavement
- Roadway Centerline
- Median Separators
- Gate/Quad Gate
- Locking Gate
- Crossing - Closure
- Crossing - Grade Separate
- Crossing - Four-Quadrant Gate
- Crossing - Gates with Center Median Treatment
- Crossing - Locking Gate (Private)
- SWM Facilities
- Drainage Culvert Crossings
- Drainage Directional Arrows
- Stations
- Station Platform - Existing
- Station Platform - Proposed
- Station Platform - Proposed by others
- Station Platform - Remove
- Building/Structure
- CSXT ROW (County Parcel Data)
- City/County Parcels
- City/County Boundary

Preferred Alternative
Mapbook

Sheet 135 of 217

\\dlsmain\GIS_DATA\GIS\Projects\011545_VA\DeptofRails-Public\Transportation\0239056_RAPS-4\AltDev-Concept\Eng\map_docs\mxd\FEIS\PreAltMapbook\DC2RVA_FEISMapbook_Final_11x17.mxd | Last Updated: 03.13.2019



1 inch = 200 feet
@ 11 x 17 inches

Projection: Lambert Conformal Conic
State Plane Virginia North FIPS 4501 Feet
North American Datum of 1983

Imagery/Basemap Source: 2015-2017 VGIN
Aerial Imagery; ESRI World Transportation

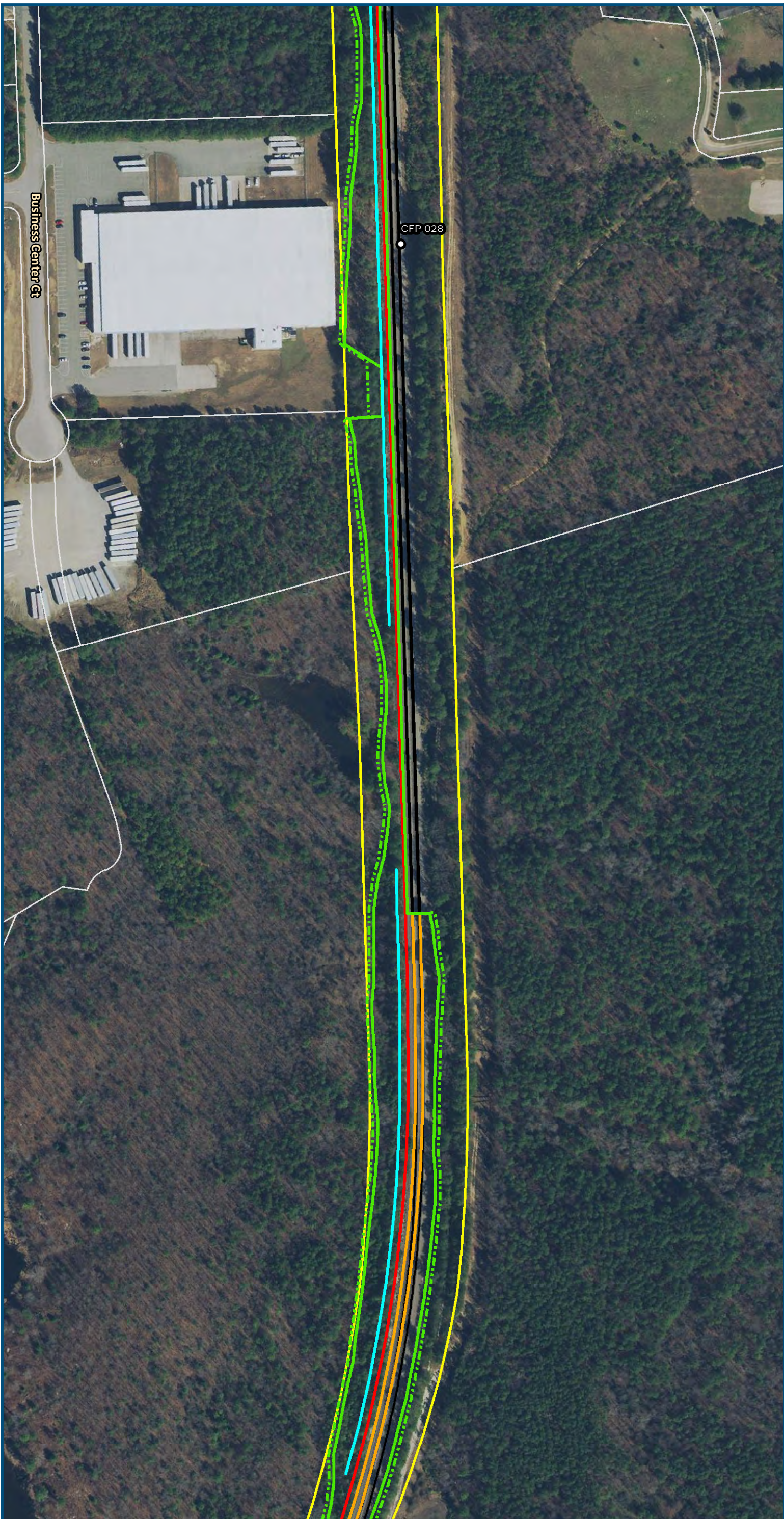
Legend

- Permanent Limits of Disturbance
- Temporary Limits of Disturbance
- CSXT Mileposts
- Control Point/Interlocking
- Track - Existing
- Track - Improve Existing
- Track - Proposed
- Track - Proposed by others
- Track - Remove
- Crossover/Turnout - Proposed
- Crossover/Turnout - Proposed by others
- Crossover/Turnout - Remove
- Retaining Walls
- Retaining Walls - Proposed by others
- Bridge
- Bridge - Proposed by others
- Roadway
- Roadway - Proposed by others
- Edge of Pavement
- Roadway Centerline
- Median Separators
- Gate/Quad Gate
- Locking Gate
- Crossing - Closure
- Crossing - Grade Separate
- Crossing - Four-Quadrant Gate
- Crossing - Gates with Center Median Treatment
- Crossing - Locking Gate (Private)
- SWM Facilities
- Drainage Culvert Crossings
- Drainage Directional Arrows
- Stations
- Station Platform - Existing
- Station Platform - Proposed
- Station Platform - Proposed by others
- Station Platform - Remove
- Building/Structure
- CSXT ROW (County Parcel Data)
- City/County Parcels
- City/County Boundary

Preferred Alternative
Mapbook

Sheet 136 of 217

\\dismain\GIS_DATA\GIS\Projects\011545_VA Dept of Rail - Public Transportation\0239056_RAPS-4\AltDev-Concept\Eng\map_docs\mxd\FEIS\PreAltMapbook\DC2RVA_FEISMapbook_Final_11x17.mxd | Last Updated: 03.13.2019



1 inch = 200 feet
@ 11 x 17 inches

Projection: Lambert Conformal Conic
State Plane Virginia North FIPS 4501 Feet
North American Datum of 1983

Imagery/Basemap Source: 2015-2017 VGIN
Aerial Imagery; ESRI World Transportation

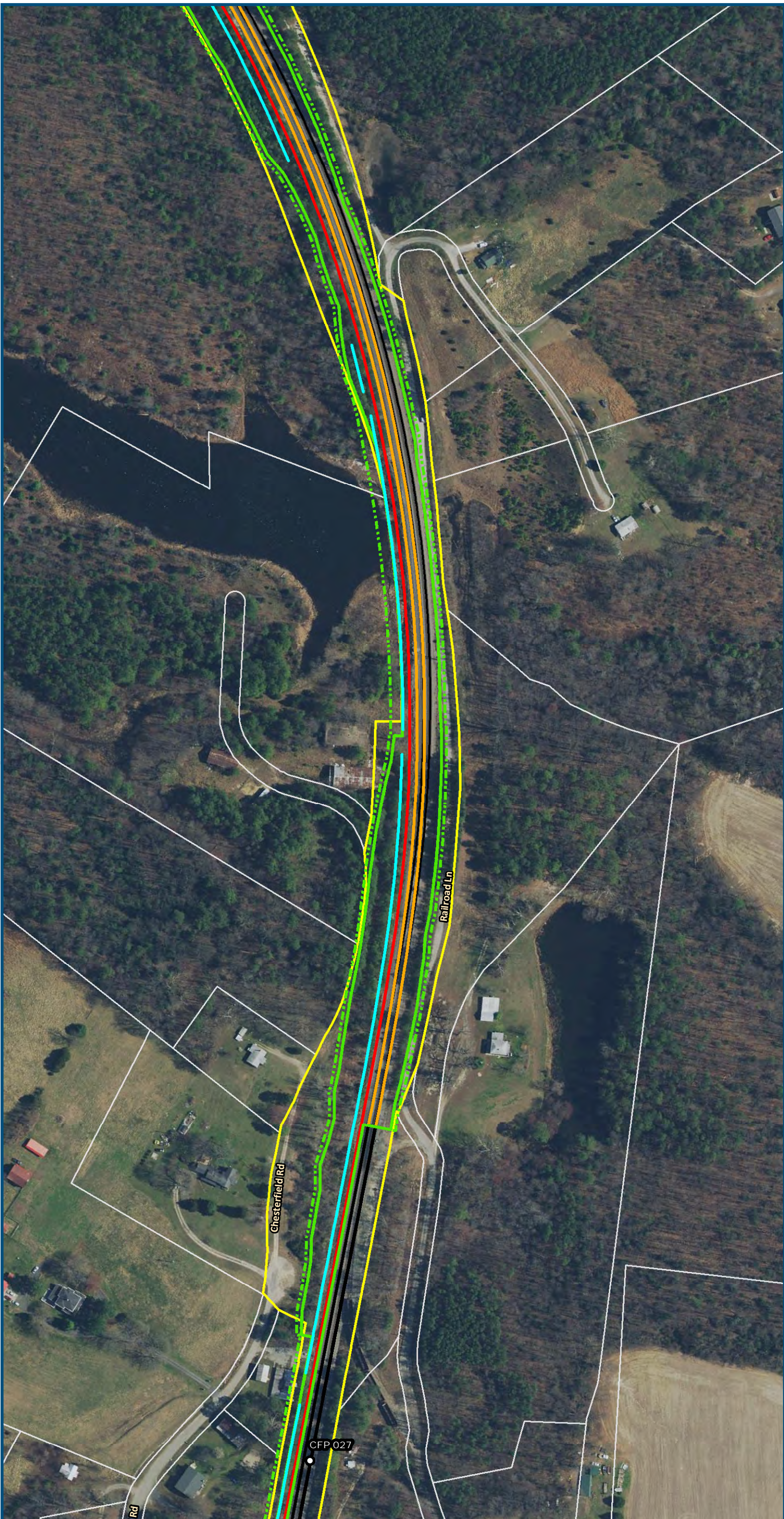
Legend

- Permanent Limits of Disturbance
- Temporary Limits of Disturbance
- CSXT Mileposts
- Control Point/Interlocking
- Track - Existing
- Track - Improve Existing
- Track - Proposed
- Track - Proposed by others
- Track - Remove
- Crossover/Turnout - Proposed
- Crossover/Turnout - Proposed by others
- Crossover/Turnout - Remove
- Retaining Walls
- Retaining Walls - Proposed by others
- Bridge
- Bridge - Proposed by others
- Roadway
- Roadway - Proposed by others
- Edge of Pavement
- Roadway Centerline
- Median Separators
- Gate/Quad Gate
- Locking Gate
- Crossing - Closure
- Crossing - Grade Separate
- Crossing - Four-Quadrant Gate
- Crossing - Gates with Center Median Treatment
- Crossing - Locking Gate (Private)
- SWM Facilities
- Drainage Culvert Crossings
- Drainage Directional Arrows
- Stations
- Station Platform - Existing
- Station Platform - Proposed
- Station Platform - Proposed by others
- Station Platform - Remove
- Building/Structure
- CSXT ROW (County Parcel Data)
- City/County Parcels
- City/County Boundary

Preferred Alternative Mapbook

Sheet 137 of 217

\\dlsmain\GIS_DATA\GIS\Projects\11545_VA\DeptofRails-Public\Transportation\0239056_RAPS-4\AltDev-Concept\Eng\map_docs\mxd\FEIS\PreAltMapbook\DC2RVA_FEISMapbook_Final_11x17.mxd | Last Updated: 03.13.2019



0 100 200
Feet
1 inch = 200 feet
@ 11 x 17 inches
Projection: Lambert Conformal Conic
State Plane Virginia North FIPS 4501 Feet
North American Datum of 1983
Imagery/Basemap Source: 2015-2017 VGIN
Aerial Imagery; ESRI World Transportation

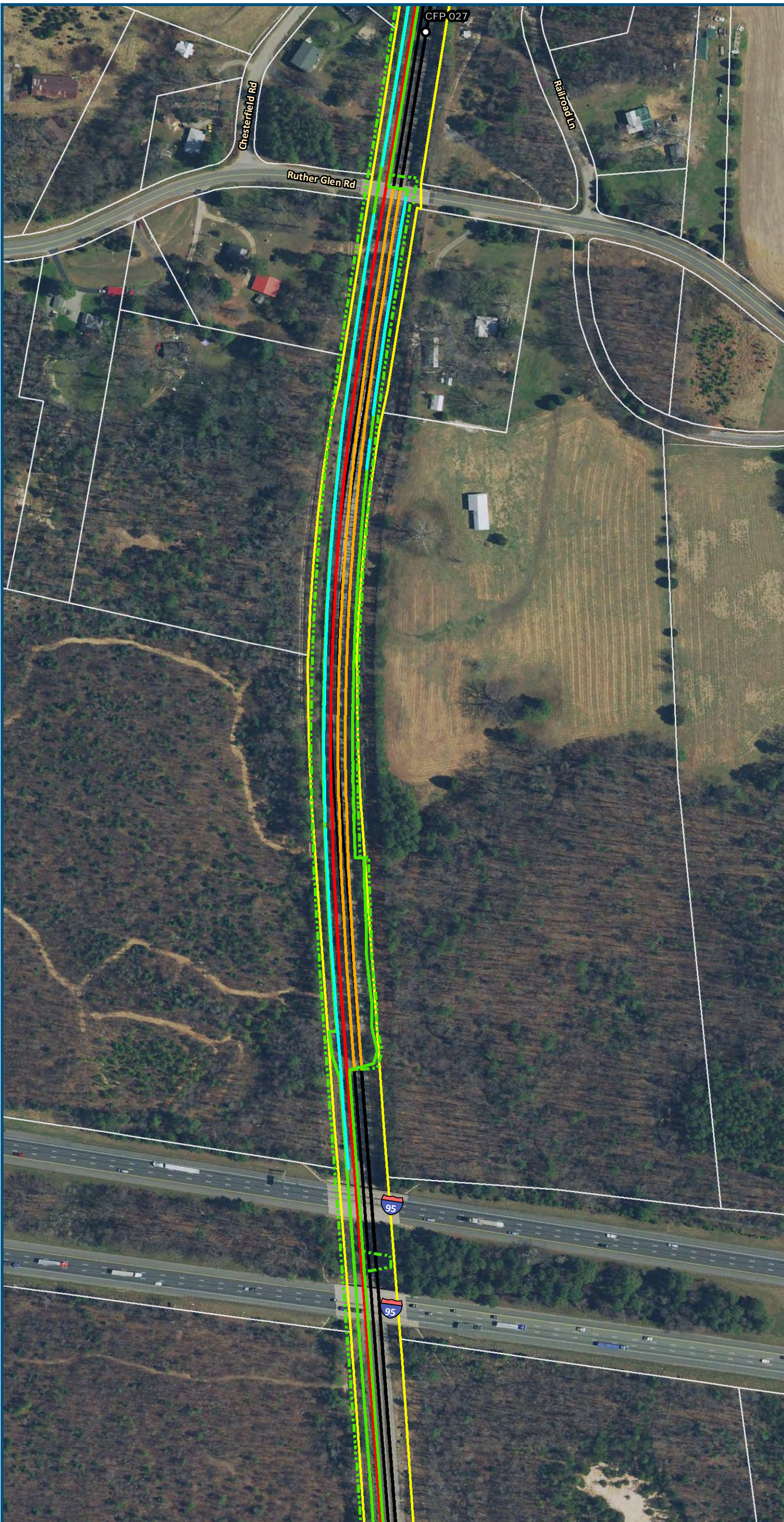
Legend

- Permanent Limits of Disturbance
- Temporary Limits of Disturbance
- CSXT Mileposts
- Control Point/Interlocking
- Track - Existing
- Track - Improve Existing
- Track - Proposed
- Track - Proposed by others
- Track - Remove
- Crossover/Turnout - Proposed
- Crossover/Turnout - Proposed by others
- Crossover/Turnout - Remove
- Retaining Walls
- Retaining Walls - Proposed by others
- Bridge
- Bridge - Proposed by others
- Roadway
- Roadway - Proposed by others
- Edge of Pavement
- Roadway Centerline
- Median Separators
- Gate/Quad Gate
- Locking Gate
- Crossing - Closure
- Crossing - Grade Separate
- Crossing - Four-Quadrant Gate
- Crossing - Gates with Center Median Treatment
- Crossing - Locking Gate (Private)
- SWM Facilities
- Drainage Culvert Crossings
- Drainage Directional Arrows
- Stations
- Station Platform - Existing
- Station Platform - Proposed
- Station Platform - Proposed by others
- Station Platform - Remove
- Building/Structure
- CSXT ROW (County Parcel Data)
- City/County Parcels
- City/County Boundary

Preferred Alternative
Mapbook

Sheet 138 of 217

\\dlsmain\GIS_DATA\GIS\Projects\011545_VA Dept of Rail\Public Transportation\0239056_RAPS-4\AltDev-Concept\Eng\map_docs\mxd\FEIS\Pre\AltMapbook\DC2RVA_FEISMapbook_Final_11x17.mxd | Last Updated: 03.13.2019



0 100 200
Feet
1 inch = 200 feet
@ 11 x 17 inches
Projection: Lambert Conformal Conic
State Plane Virginia North FIPS 4501 Feet
North American Datum of 1983
Imagery/Basemap Source: 2015-2017 VGIN
Aerial Imagery; ESRI World Transportation

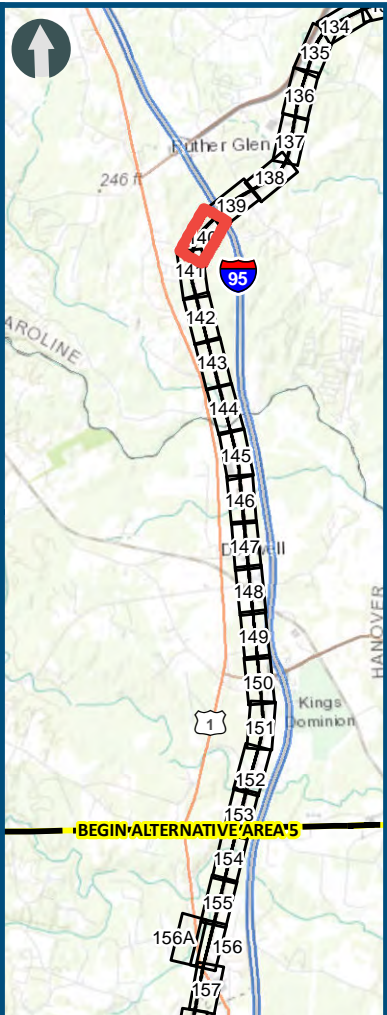
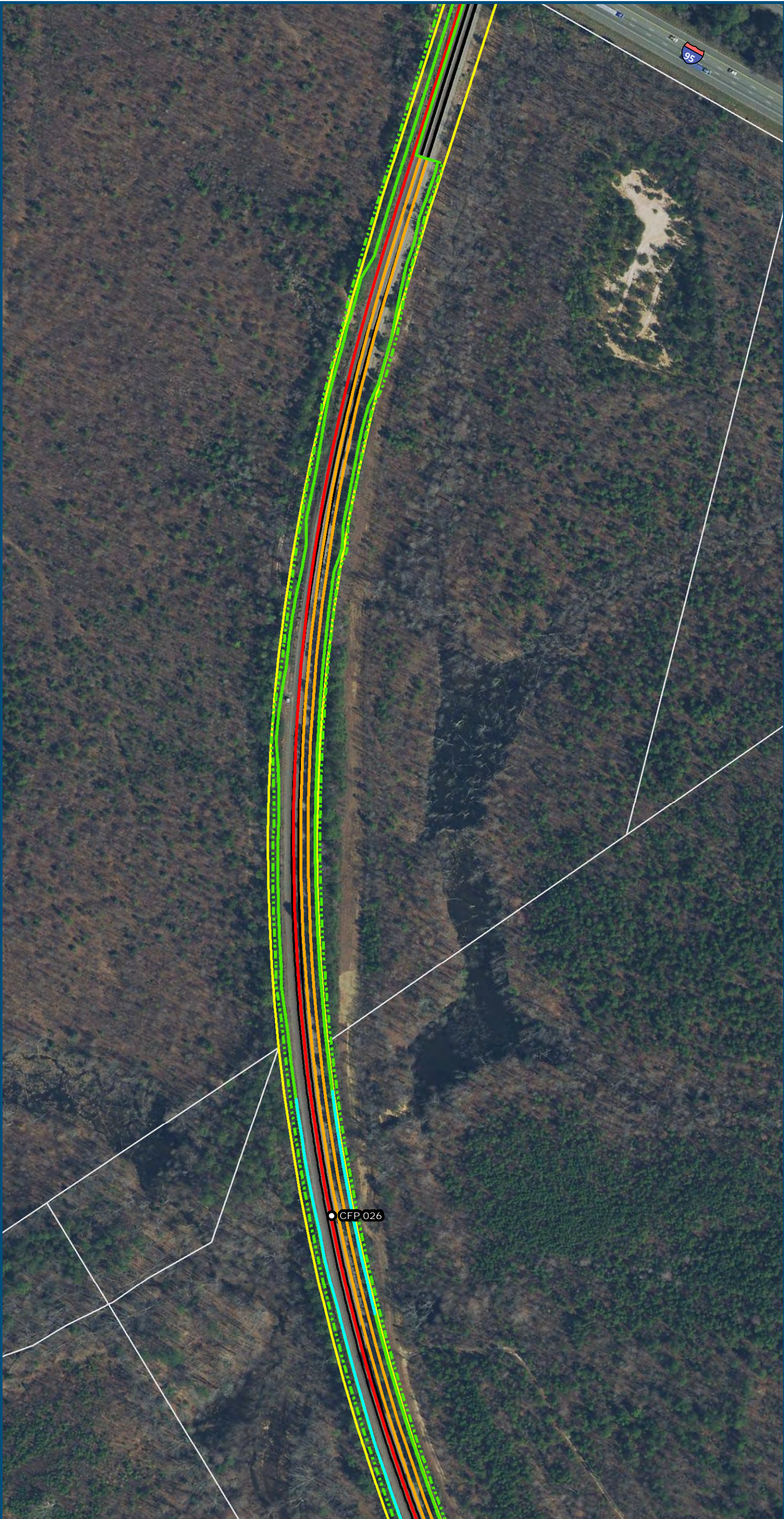
Legend

- Permanent Limits of Disturbance
- Temporary Limits of Disturbance
- CSXT Mileposts
- Control Point/Interlocking
- Track - Existing
- Track - Improve Existing
- Track - Proposed
- Track - Proposed by others
- Track - Remove
- Crossover/Turnout - Proposed
- Crossover/Turnout - Proposed by others
- Crossover/Turnout - Remove
- Retaining Walls
- Retaining Walls - Proposed by others
- Bridge
- Bridge - Proposed by others
- Roadway
- Roadway - Proposed by others
- Edge of Pavement
- Roadway Centerline
- Median Separators
- Gate/Quad Gate
- Locking Gate
- Crossing - Closure
- Crossing - Grade Separate
- Crossing - Four-Quadrant Gate
- Crossing - Gates with Center Median Treatment
- Crossing - Locking Gate (Private)
- SWM Facilities
- Drainage Culvert Crossings
- Drainage Directional Arrows
- Stations
- Station Platform - Existing
- Station Platform - Proposed
- Station Platform - Proposed by others
- Station Platform - Remove
- Building/Structure
- CSXT ROW (County Parcel Data)
- City/County Parcels
- City/County Boundary

Preferred Alternative Mapbook

Sheet 139 of 217

\\dlsmain\GIS_DATA\GIS\Projects\011545_VA Dept of Rail\Public Transportation\0239056_RAPS-4\AltDev-Concept\Eng\map_docs\mxd\FEIS\PreAltMapbook\DC2RVA_FEISMapbook_Final_11x17.mxd | Last Updated: 03.13.2019



1 inch = 200 feet
@ 11 x 17 inches

Projection: Lambert Conformal Conic
State Plane Virginia North FIPS 4501 Feet
North American Datum of 1983
Imagery/Basemap Source: 2015-2017 VGIN
Aerial Imagery; ESRI World Transportation

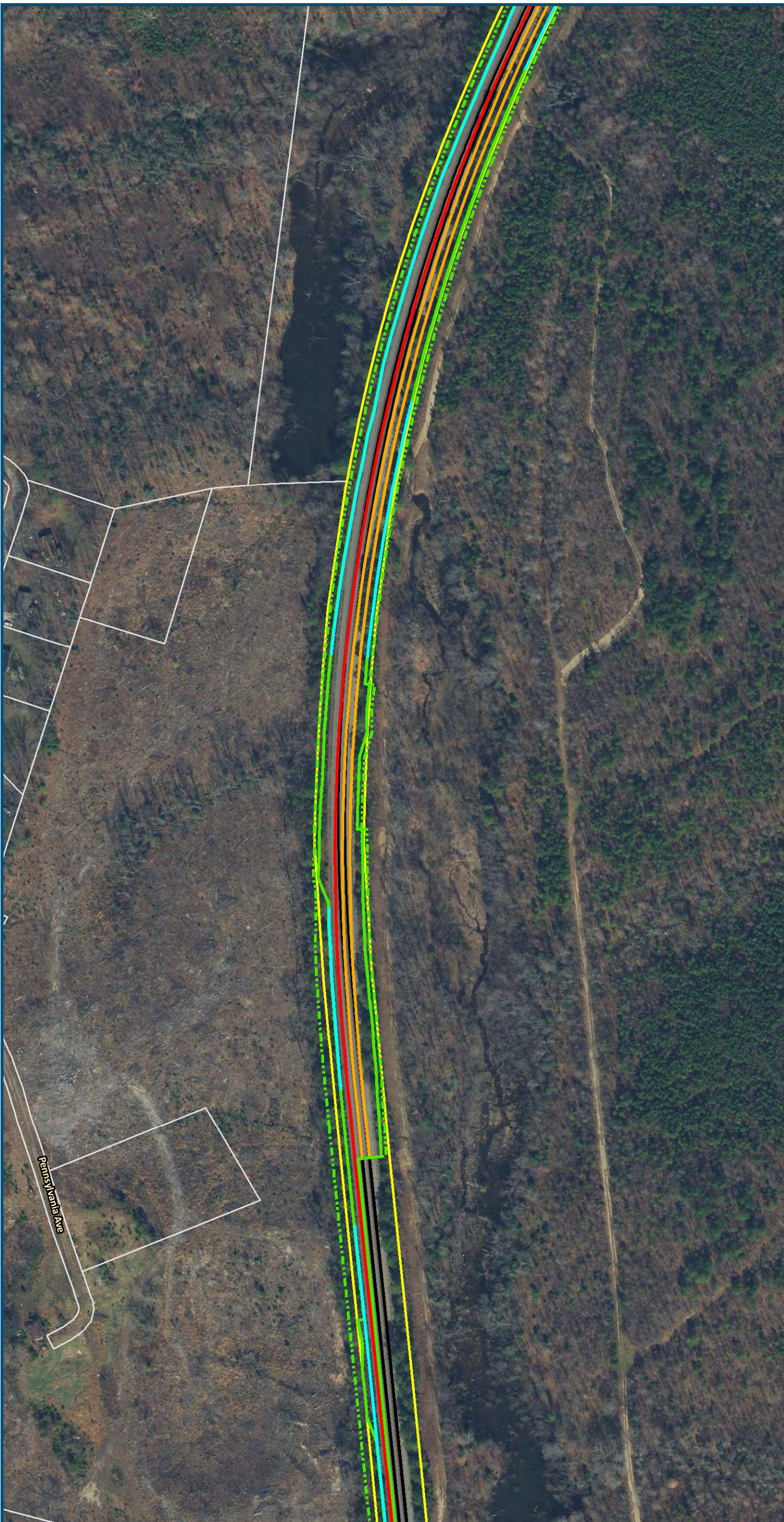
Legend

- Permanent Limits of Disturbance
- Temporary Limits of Disturbance
- CSXT Mileposts
- Control Point/Interlocking
- Track - Existing
- Track - Improve Existing
- Track - Proposed
- Track - Proposed by others
- Track - Remove
- Crossover/Turnout - Proposed
- Crossover/Turnout - Proposed by others
- Crossover/Turnout - Remove
- Retaining Walls
- Retaining Walls - Proposed by others
- Bridge
- Bridge - Proposed by others
- Roadway
- Roadway - Proposed by others
- Edge of Pavement
- Roadway Centerline
- Median Separators
- Gate/Quad Gate
- Locking Gate
- Crossing - Closure
- Crossing - Grade Separate
- Crossing - Four-Quadrant Gate
- Crossing - Gates with Center Median Treatment
- Crossing - Locking Gate (Private)
- SWM Facilities
- Drainage Culvert Crossings
- Drainage Directional Arrows
- Stations
- Station Platform - Existing
- Station Platform - Proposed
- Station Platform - Proposed by others
- Station Platform - Remove
- Building/Structure
- CSXT ROW (County Parcel Data)
- City/County Parcels
- City/County Boundary

Preferred Alternative
Mapbook

Sheet 140 of 217

\\dlsmain\GIS_DATA\GIS\Projects\011545_VA Dept of Rail-Public Transportation\0239056_RAPS-4\AltDev-Concept\Eng\map_docs\mxd\FEIS\Pre\AltMapbook\DC2RVA_FEISMapbook_Final_11x17.mxd | Last Updated: 03.13.2019



0 100 200
Feet

1 inch = 200 feet
@ 11 x 17 inches

Projection: Lambert Conformal Conic
State Plane Virginia North FIPS 4501 Feet
North American Datum of 1983

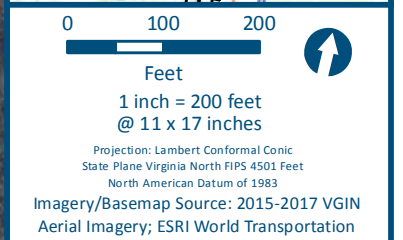
Imagery/Basemap Source: 2015-2017 VGIN
Aerial Imagery; ESRI World Transportation

Legend

- Permanent Limits of Disturbance
- Temporary Limits of Disturbance
- CSXT Mileposts
- Control Point/Interlocking
- Track - Existing
- Track - Improve Existing
- Track - Proposed
- Track - Proposed by others
- Track - Remove
- Crossover/Turnout - Proposed
- Crossover/Turnout - Proposed by others
- Crossover/Turnout - Remove
- Retaining Walls
- Retaining Walls - Proposed by others
- Bridge
- Bridge - Proposed by others
- Roadway
- Roadway - Proposed by others
- Edge of Pavement
- Roadway Centerline
- Median Separators
- Gate/Quad Gate
- Locking Gate
- Crossing - Closure
- Crossing - Grade Separate
- Crossing - Four-Quadrant Gate
- Crossing - Gates with Center Median Treatment
- Crossing - Locking Gate (Private)
- SWM Facilities
- Drainage Culvert Crossings
- Drainage Directional Arrows
- Stations
- Station Platform - Existing
- Station Platform - Proposed
- Station Platform - Proposed by others
- Station Platform - Remove
- Building/Structure
- CSXT ROW (County Parcel Data)
- City/County Parcels
- City/County Boundary

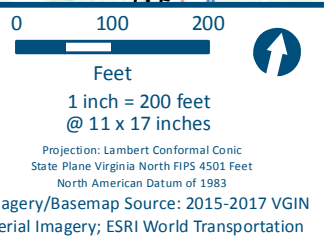
Preferred Alternative Mapbook

Sheet 141 of 217



	Permanent Limits of Disturbance
	Temporary Limits of Disturbance
	CSXT Mileposts
	Control Point/Interlocking
	Track - Existing
	Track - Improve Existing
	Track - Proposed
	Track - Proposed by others
	Track - Remove
	Crossover/Turnout - Proposed
	Crossover/Turnout - Proposed by others
	Crossover/Turnout - Remove
	Retaining Walls
	Retaining Walls - Proposed by others
	Bridge
	Bridge - Proposed by others
	Roadway
	Roadway - Proposed by others
	Edge of Pavement
	Roadway Centerline
	Median Separators
	Gate/Quad Gate
	Locking Gate
	Crossing - Closure
	Crossing - Grade Separate
	Crossing - Four-Quadrant Gate
	Crossing - Gates with Center Median Treatment
	Crossing - Locking Gate (Private)
	SWM Facilities
	Drainage Culvert Crossings
	Drainage Directional Arrows
	Stations
	Station Platform - Existing
	Station Platform - Proposed
	Station Platform - Proposed by others
	Station Platform - Remove
	Building/Structure
	CSXT ROW (County Parcel Data)
	City/County Parcels
	City/County Boundary

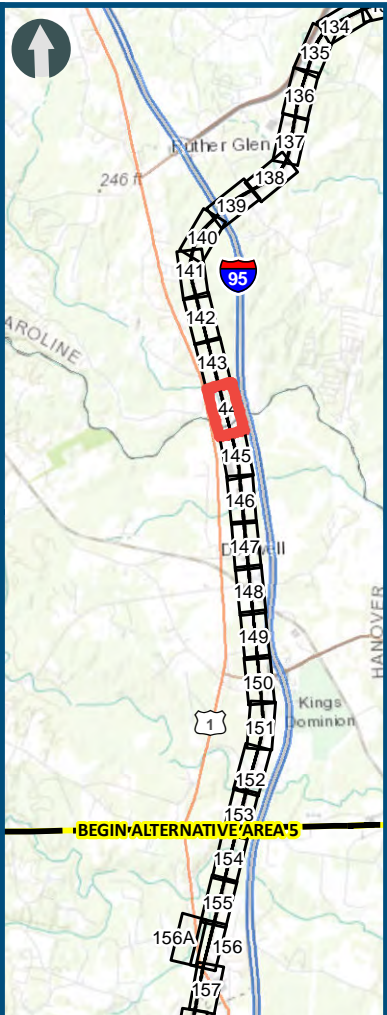
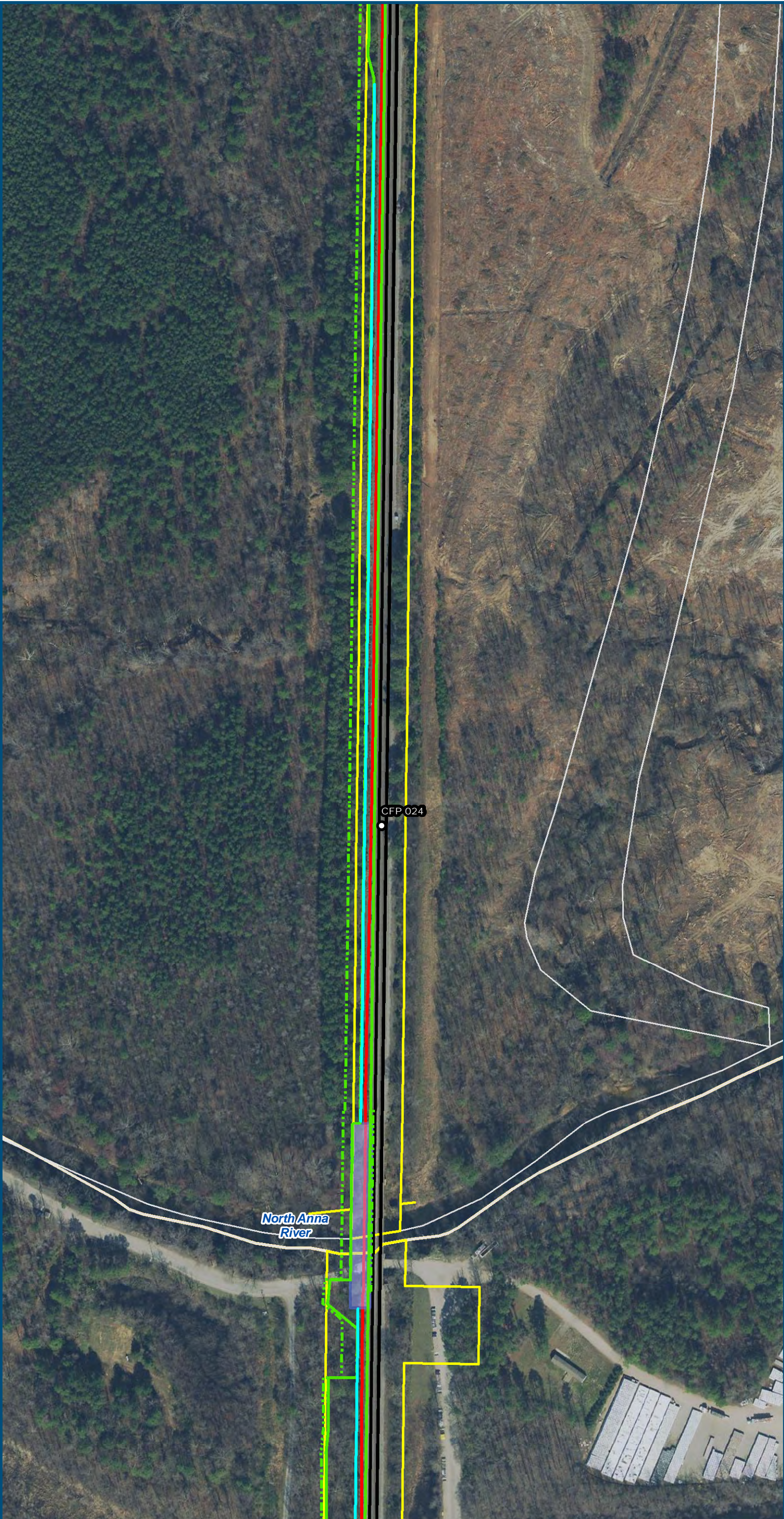
Sheet 142 of 217



	Permanent Limits of Disturbance
	Temporary Limits of Disturbance
	CSXT Mileposts
	Control Point/Interlocking
	Track - Existing
	Track - Improve Existing
	Track - Proposed
	Track - Proposed by others
	Track - Remove
	Crossover/Turnout - Proposed
	Crossover/Turnout - Proposed by others
	Crossover/Turnout - Remove
	Retaining Walls
	Retaining Walls - Proposed by others
	Bridge
	Bridge - Proposed by others
	Roadway
	Roadway - Proposed by others
	Edge of Pavement
	Roadway Centerline
	Median Separators
	Gate/Quad Gate
	Locking Gate
	Crossing - Closure
	Crossing - Grade Separate
	Crossing - Four-Quadrant Gate
	Crossing - Gates with Center Median Treatment
	Crossing - Locking Gate (Private)
	SWM Facilities
	Drainage Culvert Crossings
	Drainage Directional Arrows
	Stations
	Station Platform - Existing
	Station Platform - Proposed
	Station Platform - Proposed by others
	Station Platform - Remove
	Building/Structure
	CSXT ROW (County Parcel Data)
	City/County Parcels
	City/County Boundary

Sheet 143 of 217

\\dlsmain\GIS_DATA\GIS\Projects\011545_VA Dept of Railis-Public\Transportation\0239056_RAPS-4\AltDev-Concept\Eng\map_docs\mxd\FEIS\PreAltMapbook\DC2RVA_FEISMapbook_Final_11x17.mxd | Last Updated: 03.13.2019



0 100 200
Feet
1 inch = 200 feet
@ 11 x 17 inches
Projection: Lambert Conformal Conic
State Plane Virginia North FIPS 4501 Feet
North American Datum of 1983
Imagery/Basemap Source: 2015-2017 VGIN
Aerial Imagery; ESRI World Transportation

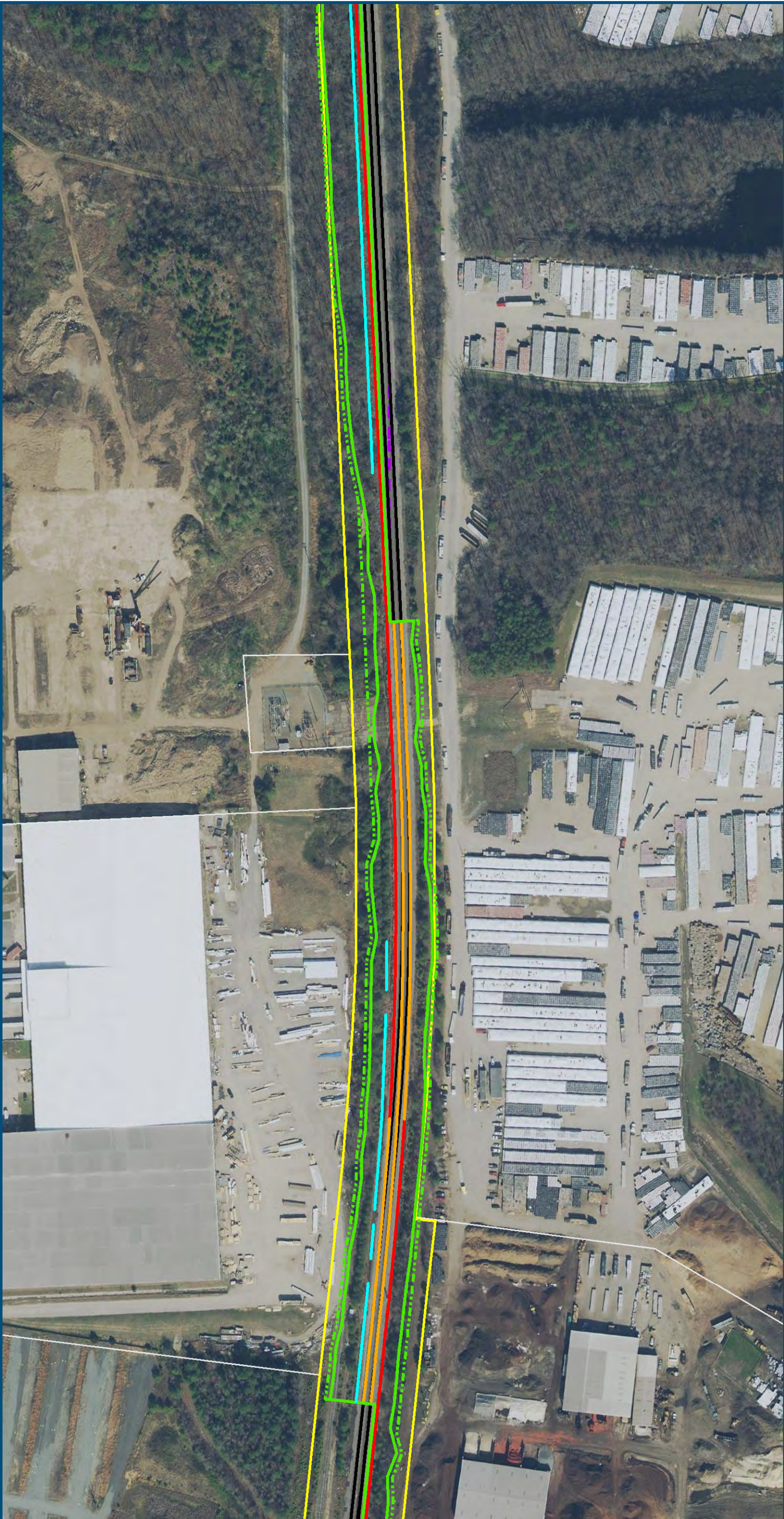
Legend

- Permanent Limits of Disturbance
- Temporary Limits of Disturbance
- CSXT Mileposts
- Control Point/Interlocking
- Track - Existing
- Track - Improve Existing
- Track - Proposed
- Track - Proposed by others
- Track - Remove
- Crossover/Turnout - Proposed
- Crossover/Turnout - Proposed by others
- Crossover/Turnout - Remove
- Retaining Walls
- Retaining Walls - Proposed by others
- Bridge
- Bridge - Proposed by others
- Roadway
- Roadway - Proposed by others
- Edge of Pavement
- Roadway Centerline
- Median Separators
- Gate/Quad Gate
- Locking Gate
- Crossing - Closure
- Crossing - Grade Separate
- Crossing - Four-Quadrant Gate
- Crossing - Gates with Center Median Treatment
- Crossing - Locking Gate (Private)
- SWM Facilities
- Drainage Culvert Crossings
- Drainage Directional Arrows
- Stations
- Station Platform - Existing
- Station Platform - Proposed
- Station Platform - Proposed by others
- Station Platform - Remove
- Building/Structure
- CSXT ROW (County Parcel Data)
- City/County Parcels
- City/County Boundary

Preferred Alternative
Mapbook

Sheet 144 of 217

\\dlsmain\GIS_DATA\GIS\Projects\11545_VA Dept of Rail-Public Transportation\0239056_RAPS-4\AltDev-ConceptEng\map_docs\mxd\FEIS\PreAltMapbook\DC2RVA_FEISMapbook_Final_11x17.mxd | Last Updated: 03.13.2019



0 100 200
Feet
1 inch = 200 feet
@ 11 x 17 inches
Projection: Lambert Conformal Conic
State Plane Virginia North FIPS 4501 Feet
North American Datum of 1983
Imagery/Basemap Source: 2015-2017 VGIN
Aerial Imagery; ESRI World Transportation

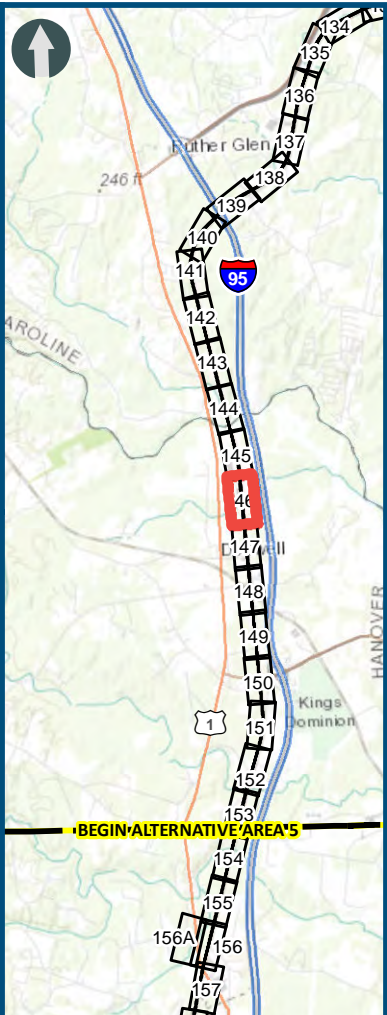
Legend

- Permanent Limits of Disturbance
- Temporary Limits of Disturbance
- CSXT Mileposts
- Control Point/Interlocking
- Track - Existing
- Track - Improve Existing
- Track - Proposed
- Track - Proposed by others
- Track - Remove
- Crossover/Turnout - Proposed
- Crossover/Turnout - Proposed by others
- Crossover/Turnout - Remove
- Retaining Walls
- Retaining Walls - Proposed by others
- Bridge
- Bridge - Proposed by others
- Roadway
- Roadway - Proposed by others
- Edge of Pavement
- Roadway Centerline
- Median Separators
- Gate/Quad Gate
- Locking Gate
- Crossing - Closure
- Crossing - Grade Separate
- Crossing - Four-Quadrant Gate
- Crossing - Gates with Center Median Treatment
- Crossing - Locking Gate (Private)
- SWM Facilities
- Drainage Culvert Crossings
- Drainage Directional Arrows
- Stations
- Station Platform - Existing
- Station Platform - Proposed
- Station Platform - Proposed by others
- Station Platform - Remove
- Building/Structure
- CSXT ROW (County Parcel Data)
- City/County Parcels
- City/County Boundary

Preferred Alternative
Mapbook

Sheet 145 of 217

\\dlsmain\GIS_DATA\GIS\Projects\011545_VA Dept of Rails-Public\Transportation\0239056_RAPS-4\AltDev-Concept\Eng\map_docs\mxd\FEIS\Pre\AltMapbook\DC2RVA_FEISMapbook_Final_11x17.mxd | Last Updated: 03.13.2019



0 100 200
Feet
1 inch = 200 feet
@ 11 x 17 inches
Projection: Lambert Conformal Conic
State Plane Virginia North FIPS 4501 Feet
North American Datum of 1983
Imagery/Basemap Source: 2015-2017 VGIN
Aerial Imagery; ESRI World Transportation

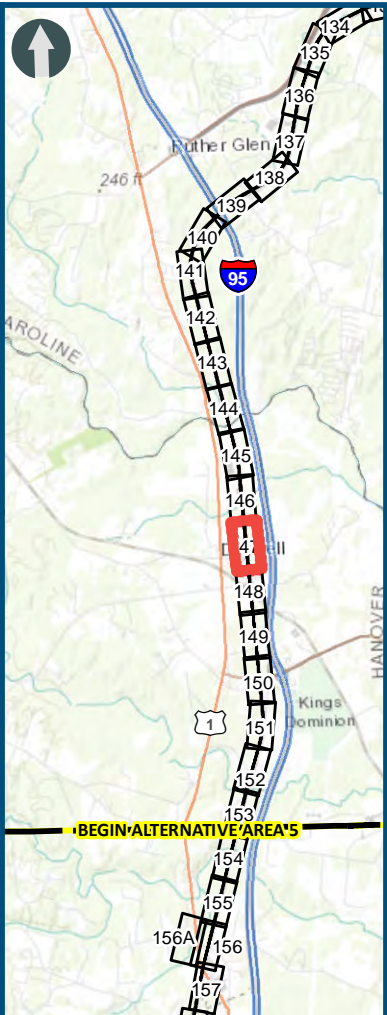
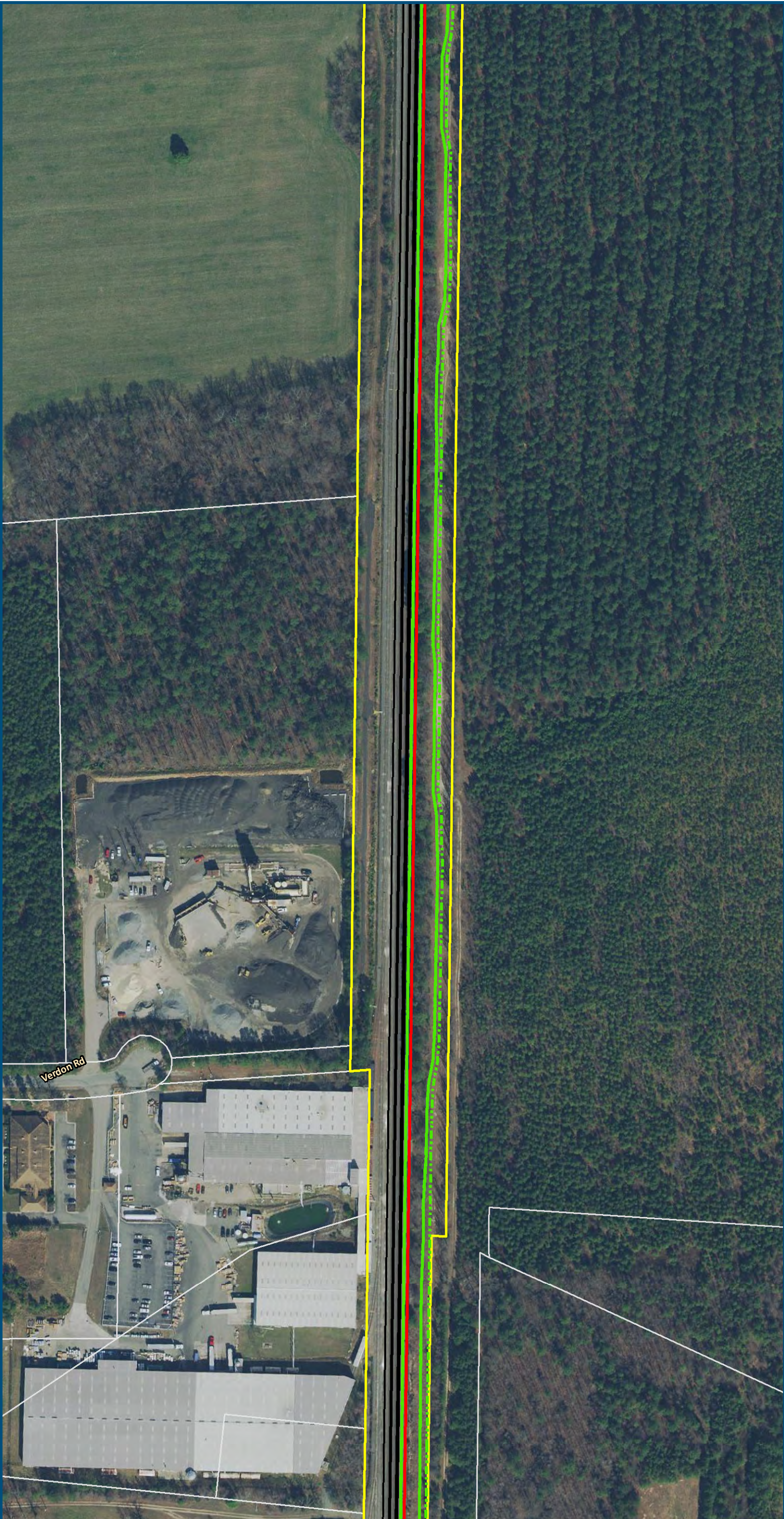
Legend

- Permanent Limits of Disturbance
- Temporary Limits of Disturbance
- CSXT Mileposts
- Control Point/Interlocking
- Track - Existing
- Track - Improve Existing
- Track - Proposed
- Track - Proposed by others
- Track - Remove
- Crossover/Turnout - Proposed
- Crossover/Turnout - Proposed by others
- Crossover/Turnout - Remove
- Retaining Walls
- Retaining Walls - Proposed by others
- Bridge
- Bridge - Proposed by others
- Roadway
- Roadway - Proposed by others
- Edge of Pavement
- Roadway Centerline
- Median Separators
- Gate/Quad Gate
- Locking Gate
- Crossing - Closure
- Crossing - Grade Separate
- Crossing - Four-Quadrant Gate
- Crossing - Gates with Center Median Treatment
- Crossing - Locking Gate (Private)
- SWM Facilities
- Drainage Culvert Crossings
- Drainage Directional Arrows
- Stations
- Station Platform - Existing
- Station Platform - Proposed
- Station Platform - Proposed by others
- Station Platform - Remove
- Building/Structure
- CSXT ROW (County Parcel Data)
- City/County Parcels
- City/County Boundary

Preferred Alternative
Mapbook

Sheet 146 of 217

\\dlsmain\GIS_DATA\GIS\Projects\011545_VA Dept of Rail - Public Transportation\0239056_RAPS-4AltDev-Concept\Eng\map_docs\mxd\FEIS\PreAltMapbook\DC2RVA_FEISMapbook_Final_11x17.mxd | Last Updated: 03.13.2019



0 100 200
Feet
1 inch = 200 feet
@ 11 x 17 inches
Projection: Lambert Conformal Conic
State Plane Virginia North FIPS 4501 Feet
North American Datum of 1983
Imagery/Basemap Source: 2015-2017 VGIN
Aerial Imagery; ESRI World Transportation

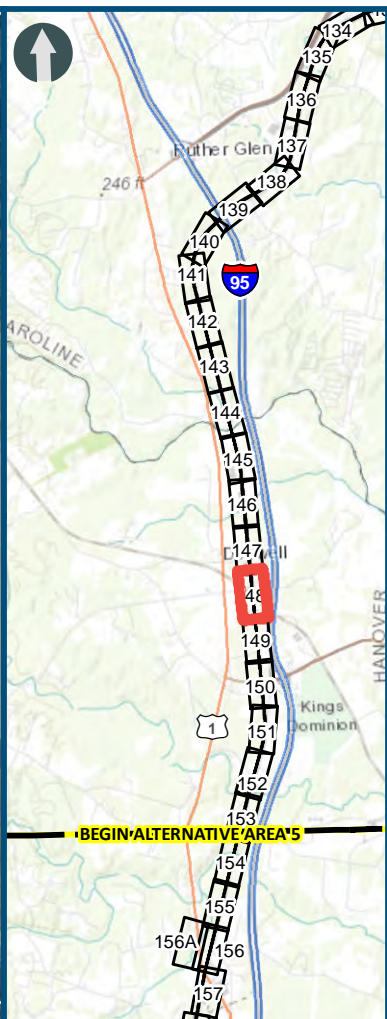
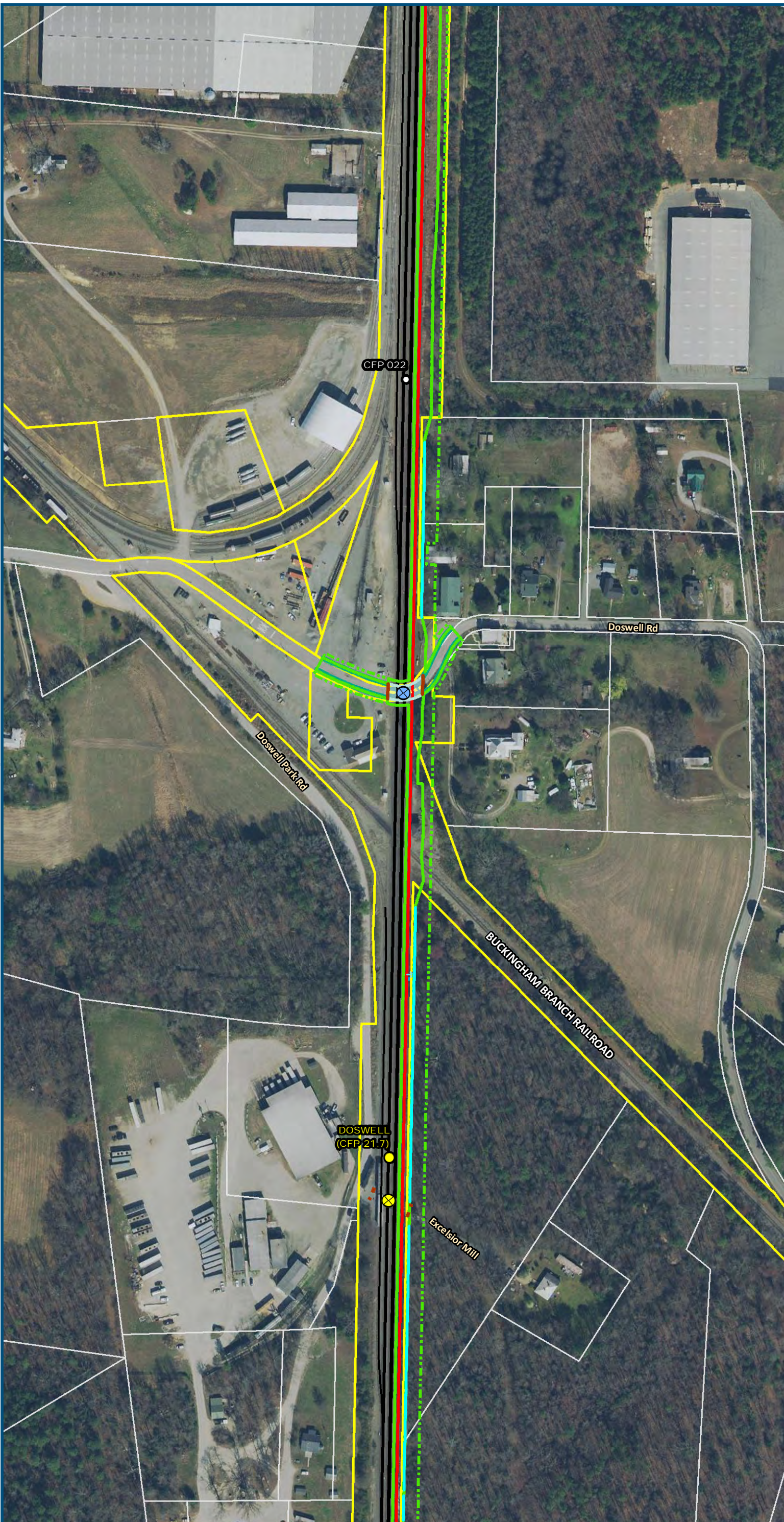
Legend

- Permanent Limits of Disturbance
- Temporary Limits of Disturbance
- CSXT Mileposts
- Control Point/Interlocking
- Track - Existing
- Track - Improve Existing
- Track - Proposed
- Track - Proposed by others
- Track - Remove
- Crossover/Turnout - Proposed
- Crossover/Turnout - Proposed by others
- Crossover/Turnout - Remove
- Retaining Walls
- Retaining Walls - Proposed by others
- Bridge
- Bridge - Proposed by others
- Roadway
- Roadway - Proposed by others
- Edge of Pavement
- Roadway Centerline
- Median Separators
- Gate/Quad Gate
- Locking Gate
- Crossing - Closure
- Crossing - Grade Separate
- Crossing - Four-Quadrant Gate
- Crossing - Gates with Center Median Treatment
- Crossing - Locking Gate (Private)
- SWM Facilities
- Drainage Culvert Crossings
- Drainage Directional Arrows
- Stations
- Station Platform - Existing
- Station Platform - Proposed
- Station Platform - Proposed by others
- Station Platform - Remove
- Building/Structure
- CSXT ROW (County Parcel Data)
- City/County Parcels
- City/County Boundary

Preferred Alternative
Mapbook

Sheet 147 of 217

\\dismain\GIS_DATA\GIS\Projects\11545_VA Dept of Rail - Public Transportation\0239056_RAPS-4\AltDev-Concept\Eng\map_docs\mxd\FEIS\PreAltMapbook\DC2RVA_FEISMapbook_Final_11x17.mxd | Last Updated: 03.13.2019



0 100 200
Feet
1 inch = 200 feet
@ 11 x 17 inches
Projection: Lambert Conformal Conic
State Plane Virginia North FIPS 4501 Feet
North American Datum of 1983
Imagery/Basemap Source: 2015-2017 VGIN
Aerial Imagery; ESRI World Transportation

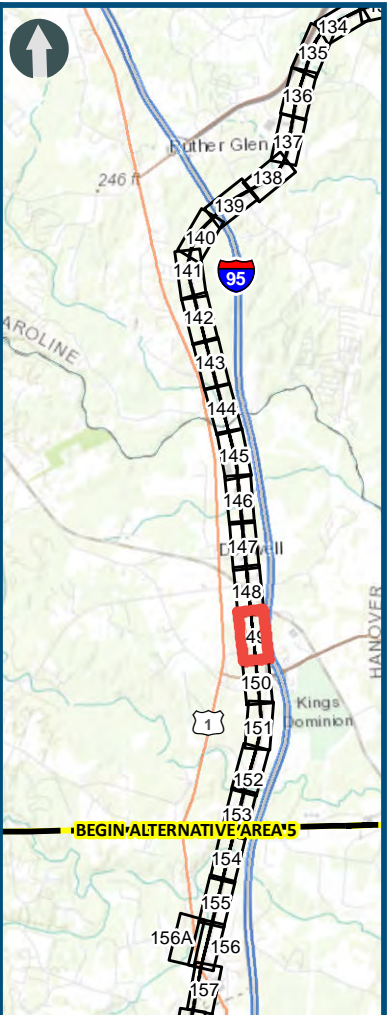
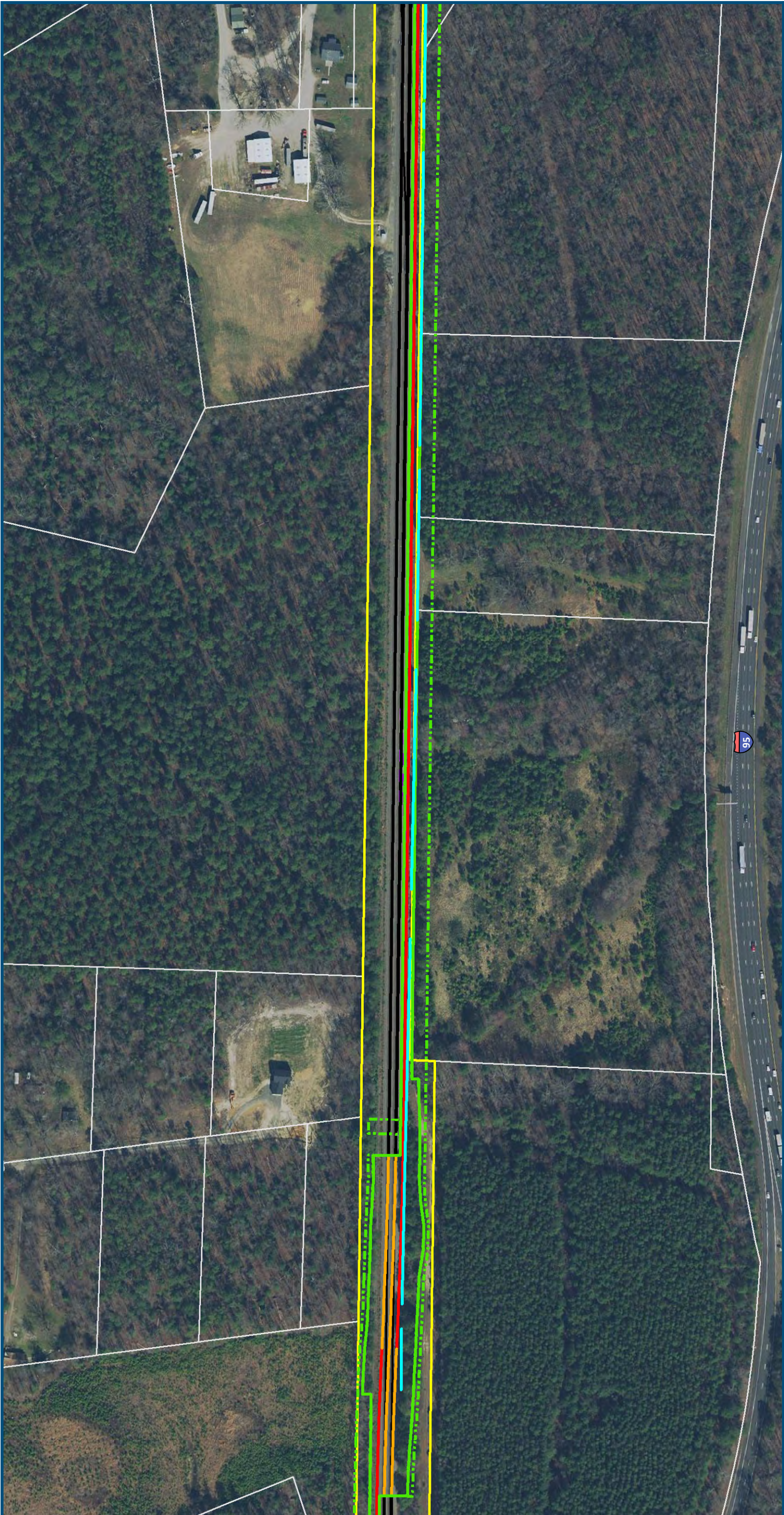
Legend

- Permanent Limits of Disturbance
- Temporary Limits of Disturbance
- CSXT Mileposts
- Control Point/Interlocking
- Track - Existing
- Track - Improve Existing
- Track - Proposed
- Track - Proposed by others
- Track - Remove
- Crossover/Turnout - Proposed
- Crossover/Turnout - Proposed by others
- Crossover/Turnout - Remove
- Retaining Walls
- Retaining Walls - Proposed by others
- Bridge
- Bridge - Proposed by others
- Roadway
- Roadway - Proposed by others
- Edge of Pavement
- Roadway Centerline
- Median Separators
- Gate/Quad Gate
- Locking Gate
- Crossing - Closure
- Crossing - Grade Separate
- Crossing - Four-Quadrant Gate
- Crossing - Gates with Center Median Treatment
- Crossing - Locking Gate (Private)
- SWM Facilities
- Drainage Culvert Crossings
- Drainage Directional Arrows
- Stations
- Station Platform - Existing
- Station Platform - Proposed
- Station Platform - Proposed by others
- Station Platform - Remove
- Building/Structure
- CSXT ROW (County Parcel Data)
- City/County Parcels
- City/County Boundary

Preferred Alternative Mapbook

Sheet 148 of 217

\\dlsmain\GIS_DATA\GIS\Projects\011545_VA Dept of Rail-Public Transportation\0239056_RAPS-4AltDev-ConceptEng\map_docs\mxd\FEIS\PreAltMapbook\DC2RVA_FEISMapbook_Final_11x17.mxd | Last Updated: 03.13.2019



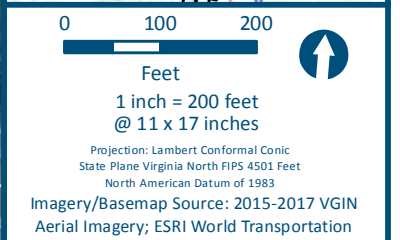
0 100 200
Feet
1 inch = 200 feet
@ 11 x 17 inches
Projection: Lambert Conformal Conic
State Plane Virginia North FIPS 4501 Feet
North American Datum of 1983
Imagery/Basemap Source: 2015-2017 VGIN
Aerial Imagery; ESRI World Transportation

Legend

- Permanent Limits of Disturbance
- Temporary Limits of Disturbance
- CSXT Mileposts
- Control Point/Interlocking
- Track - Existing
- Track - Improve Existing
- Track - Proposed
- Track - Proposed by others
- Track - Remove
- Crossover/Turnout - Proposed
- Crossover/Turnout - Proposed by others
- Crossover/Turnout - Remove
- Retaining Walls
- Retaining Walls - Proposed by others
- Bridge
- Bridge - Proposed by others
- Roadway
- Roadway - Proposed by others
- Edge of Pavement
- Roadway Centerline
- Median Separators
- Gate/Quad Gate
- Locking Gate
- Crossing - Closure
- Crossing - Grade Separate
- Crossing - Four-Quadrant Gate
- Crossing - Gates with Center Median Treatment
- Crossing - Locking Gate (Private)
- SWM Facilities
- Drainage Culvert Crossings
- Drainage Directional Arrows
- Stations
- Station Platform - Existing
- Station Platform - Proposed
- Station Platform - Proposed by others
- Station Platform - Remove
- Building/Structure
- CSXT ROW (County Parcel Data)
- City/County Parcels
- City/County Boundary

Preferred Alternative
Mapbook

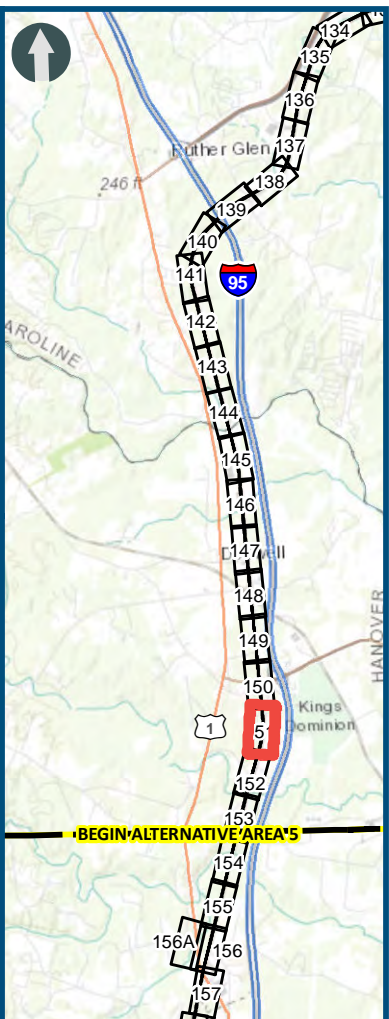
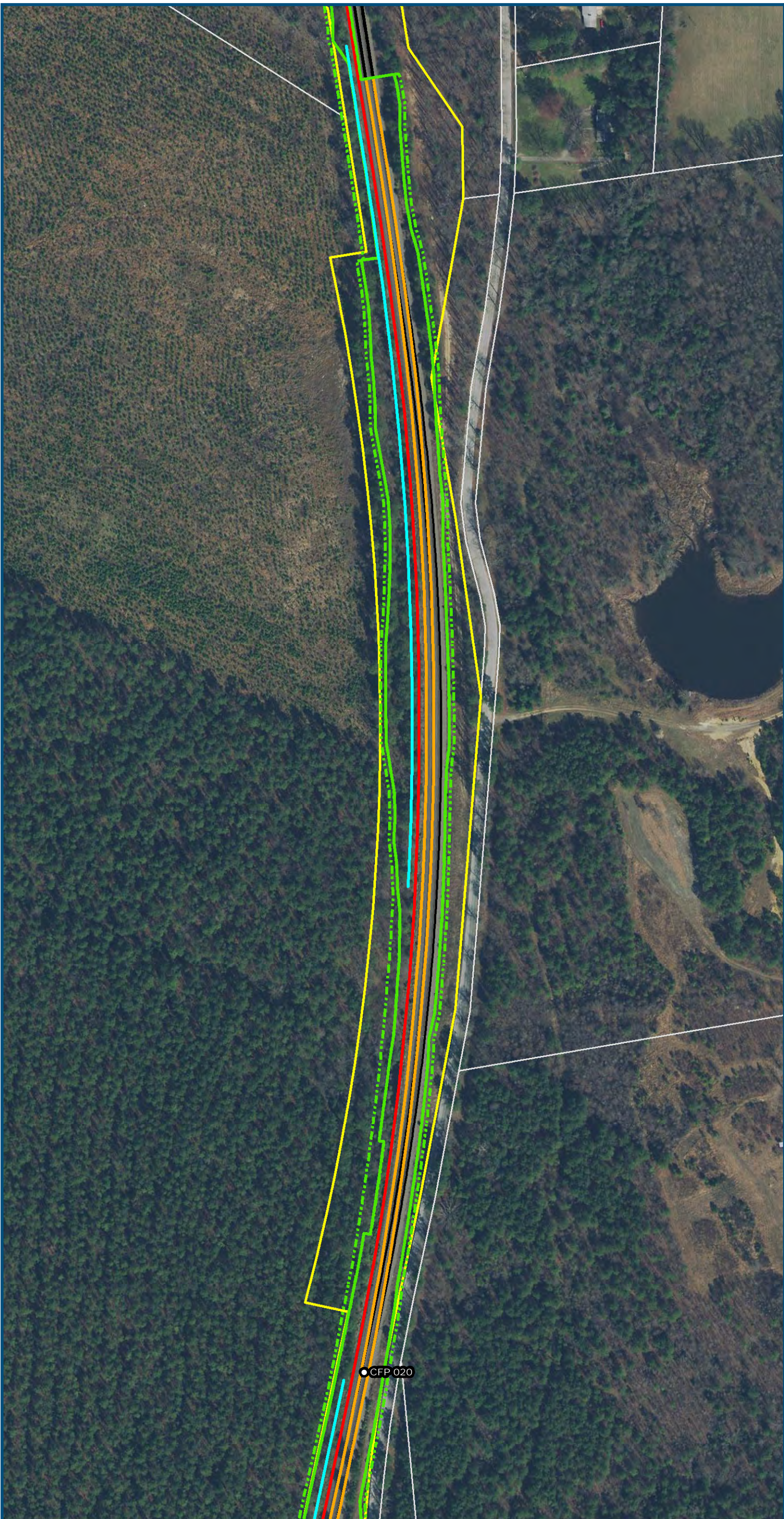
Sheet 149 of 217



	Permanent Limits of Disturbance
	Temporary Limits of Disturbance
	CSXT Mileposts
	Control Point/Interlocking
	Track - Existing
	Track - Improve Existing
	Track - Proposed
	Track - Proposed by others
	Track - Remove
	Crossover/Turnout - Proposed
	Crossover/Turnout - Proposed by others
	Crossover/Turnout - Remove
	Retaining Walls
	Retaining Walls - Proposed by others
	Bridge
	Bridge - Proposed by others
	Roadway
	Roadway - Proposed by others
	Edge of Pavement
	Roadway Centerline
	Median Separators
	Gate/Quad Gate
	Locking Gate
	Crossing - Closure
	Crossing - Grade Separate
	Crossing - Four-Quadrant Gate
	Crossing - Gates with Center Median Treatment
	Crossing - Locking Gate (Private)
	SWM Facilities
	Drainage Culvert Crossings
	Drainage Directional Arrows
	Stations
	Station Platform - Existing
	Station Platform - Proposed
	Station Platform - Proposed by others
	Station Platform - Remove
	Building/Structure
	CSXT ROW (County Parcel Data)
	City/County Parcels
	City/County Boundary

Sheet 150 of 217

\\dlsmain\GIS_DATA\GIS\Projects\011545_VA Dept of Rails-Public\Transportation\0239056_RAPS-4\AltDev-Concept\Eng\map_docs\mxd\FEIS\Pre\AltMapbook\DC2RVA_FEISMapbook_Final_11x17.mxd | Last Updated: 03.13.2019



1 inch = 200 feet
@ 11 x 17 inches

Projection: Lambert Conformal Conic
State Plane Virginia North FIPS 4501 Feet
North American Datum of 1983

Imagery/Basemap Source: 2015-2017 VGIN
Aerial Imagery; ESRI World Transportation

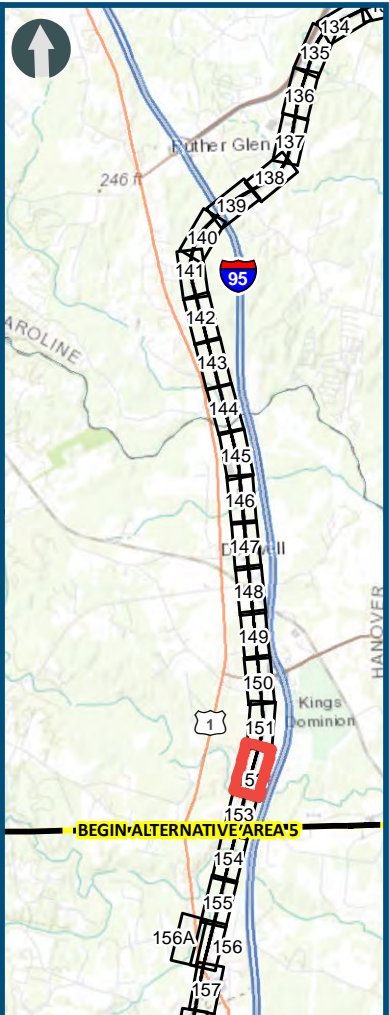
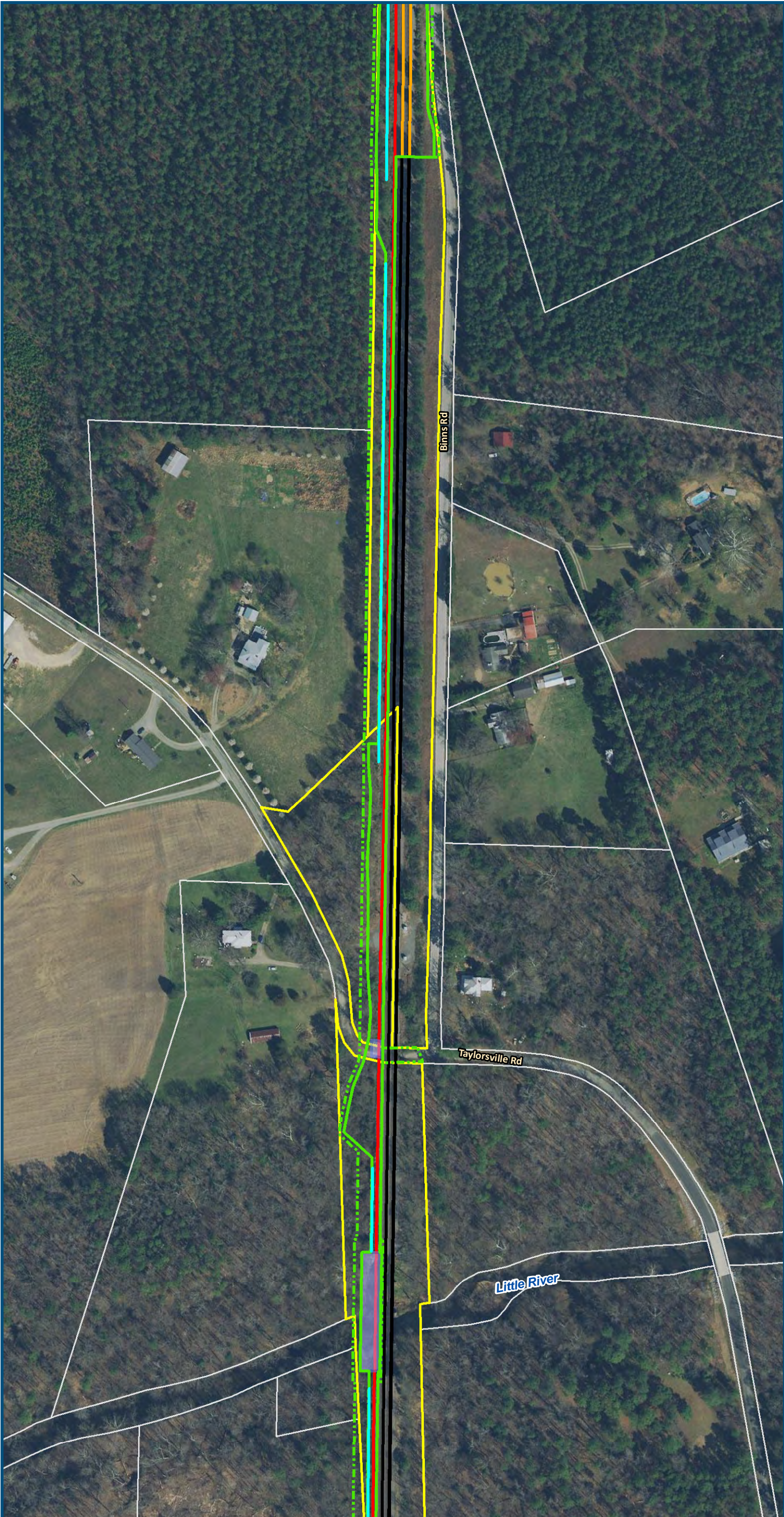
Legend

- Permanent Limits of Disturbance
- Temporary Limits of Disturbance
- CSXT Mileposts
- Control Point/Interlocking
- Track - Existing
- Track - Improve Existing
- Track - Proposed
- Track - Proposed by others
- Track - Remove
- Crossover/Turnout - Proposed
- Crossover/Turnout - Proposed by others
- Crossover/Turnout - Remove
- Retaining Walls
- Retaining Walls - Proposed by others
- Bridge
- Bridge - Proposed by others
- Roadway
- Roadway - Proposed by others
- Edge of Pavement
- Roadway Centerline
- Median Separators
- Gate/Quad Gate
- Locking Gate
- Crossing - Closure
- Crossing - Grade Separate
- Crossing - Four-Quadrant Gate
- Crossing - Gates with Center Median Treatment
- Crossing - Locking Gate (Private)
- SWM Facilities
- Drainage Culvert Crossings
- Drainage Directional Arrows
- Stations
- Station Platform - Existing
- Station Platform - Proposed
- Station Platform - Proposed by others
- Station Platform - Remove
- Building/Structure
- CSXT ROW (County Parcel Data)
- City/County Parcels
- City/County Boundary

Preferred Alternative
Mapbook

Sheet 151 of 217

\\dlsmain\GIS_DATA\GIS\Projects\011545_VA Dept of Rail - Public\Transportation\0239056_RAPS-4\AltDev-Concept\Eng\map_docs\mxd\FEIS\PreAlt\Mapbook\DC2RVA_FEISMapbook_Final_11x17.mxd | Last Updated: 03.13.2019



0 100 200
Feet
1 inch = 200 feet
@ 11 x 17 inches
Projection: Lambert Conformal Conic
State Plane Virginia North FIPS 4501 Feet
North American Datum of 1983
Imagery/Basemap Source: 2015-2017 VGIN
Aerial Imagery; ESRI World Transportation

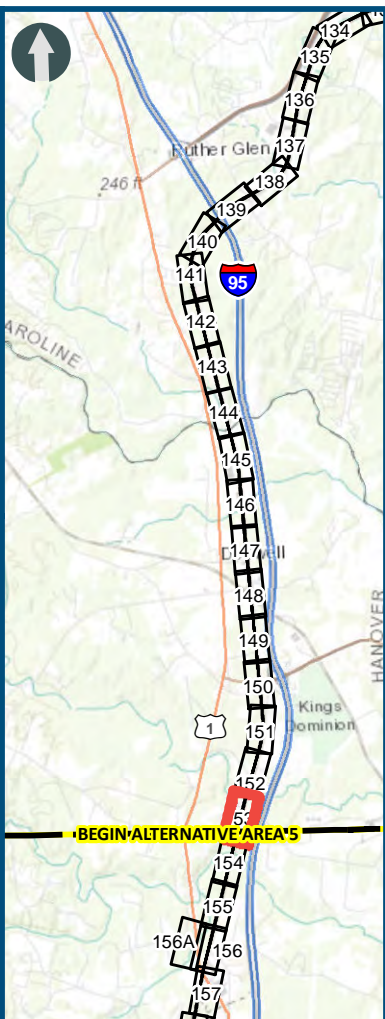
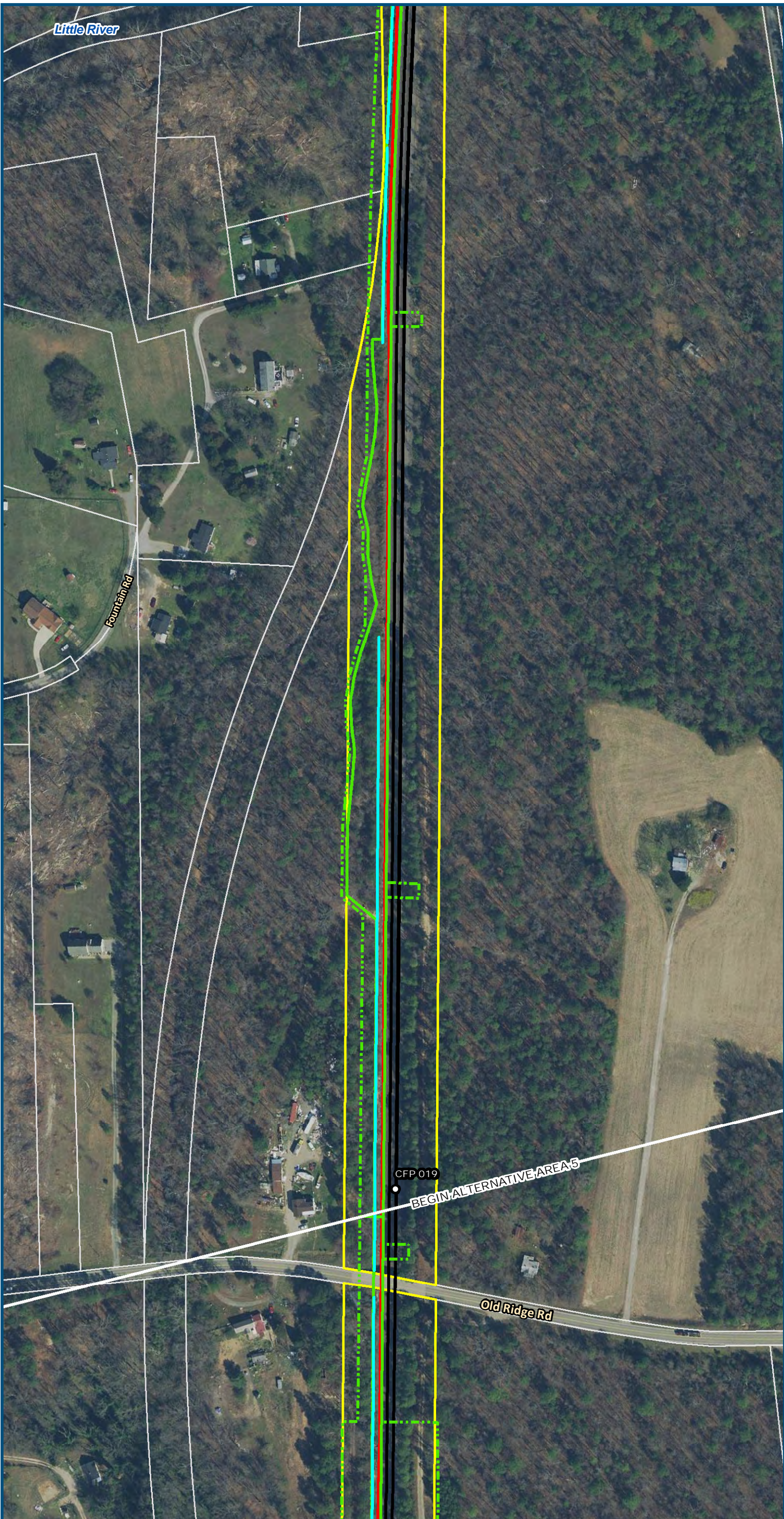
Legend

- Permanent Limits of Disturbance
- Temporary Limits of Disturbance
- CSXT Mileposts
- Control Point/Interlocking
- Track - Existing
- Track - Improve Existing
- Track - Proposed
- Track - Proposed by others
- Track - Remove
- Crossover/Turnout - Proposed
- Crossover/Turnout - Proposed by others
- Crossover/Turnout - Remove
- Retaining Walls
- Retaining Walls - Proposed by others
- Bridge
- Bridge - Proposed by others
- Roadway
- Roadway - Proposed by others
- Edge of Pavement
- Roadway Centerline
- Median Separators
- Gate/Quad Gate
- Locking Gate
- Crossing - Closure
- Crossing - Grade Separate
- Crossing - Four-Quadrant Gate
- Crossing - Gates with Center Median Treatment
- Crossing - Locking Gate (Private)
- SWM Facilities
- Drainage Culvert Crossings
- Drainage Directional Arrows
- Stations
- Station Platform - Existing
- Station Platform - Proposed
- Station Platform - Proposed by others
- Station Platform - Remove
- Building/Structure
- CSXT ROW (County Parcel Data)
- City/County Parcels
- City/County Boundary

Preferred Alternative
Mapbook

Sheet 152 of 217

\\dlsmain\GIS_DATA\GIS\Projects\011545_VA Dept of Rails-Public\Transportation\0239056_RAPS-4\AltDev-Concept\Eng\map_docs\mxd\FEIS\Pre\AltMapbook\DC2RVA_FEISMapbook_Final_11x17.mxd | Last Updated: 03.13.2019



0 100 200
Feet
1 inch = 200 feet
@ 11 x 17 inches
Projection: Lambert Conformal Conic
State Plane Virginia North FIPS 4501 Feet
North American Datum of 1983
Imagery/Basemap Source: 2015-2017 VGIN
Aerial Imagery; ESRI World Transportation

Legend

- Permanent Limits of Disturbance
- Temporary Limits of Disturbance
- CSXT Mileposts
- Control Point/Interlocking
- Track - Existing
- Track - Improve Existing
- Track - Proposed
- Track - Proposed by others
- Track - Remove
- Crossover/Turnout - Proposed
- Crossover/Turnout - Proposed by others
- Crossover/Turnout - Remove
- Retaining Walls
- Retaining Walls - Proposed by others
- Bridge
- Bridge - Proposed by others
- Roadway
- Roadway - Proposed by others
- Edge of Pavement
- Roadway Centerline
- Median Separators
- Gate/Quad Gate
- Locking Gate
- Crossing - Closure
- Crossing - Grade Separate
- Crossing - Four-Quadrant Gate
- Crossing - Gates with Center Median Treatment
- Crossing - Locking Gate (Private)
- SWM Facilities
- Drainage Culvert Crossings
- Drainage Directional Arrows
- Stations
- Station Platform - Existing
- Station Platform - Proposed
- Station Platform - Proposed by others
- Station Platform - Remove
- Building/Structure
- CSXT ROW (County Parcel Data)
- City/County Parcels
- City/County Boundary

Preferred Alternative Mapbook

Sheet 153 of 217