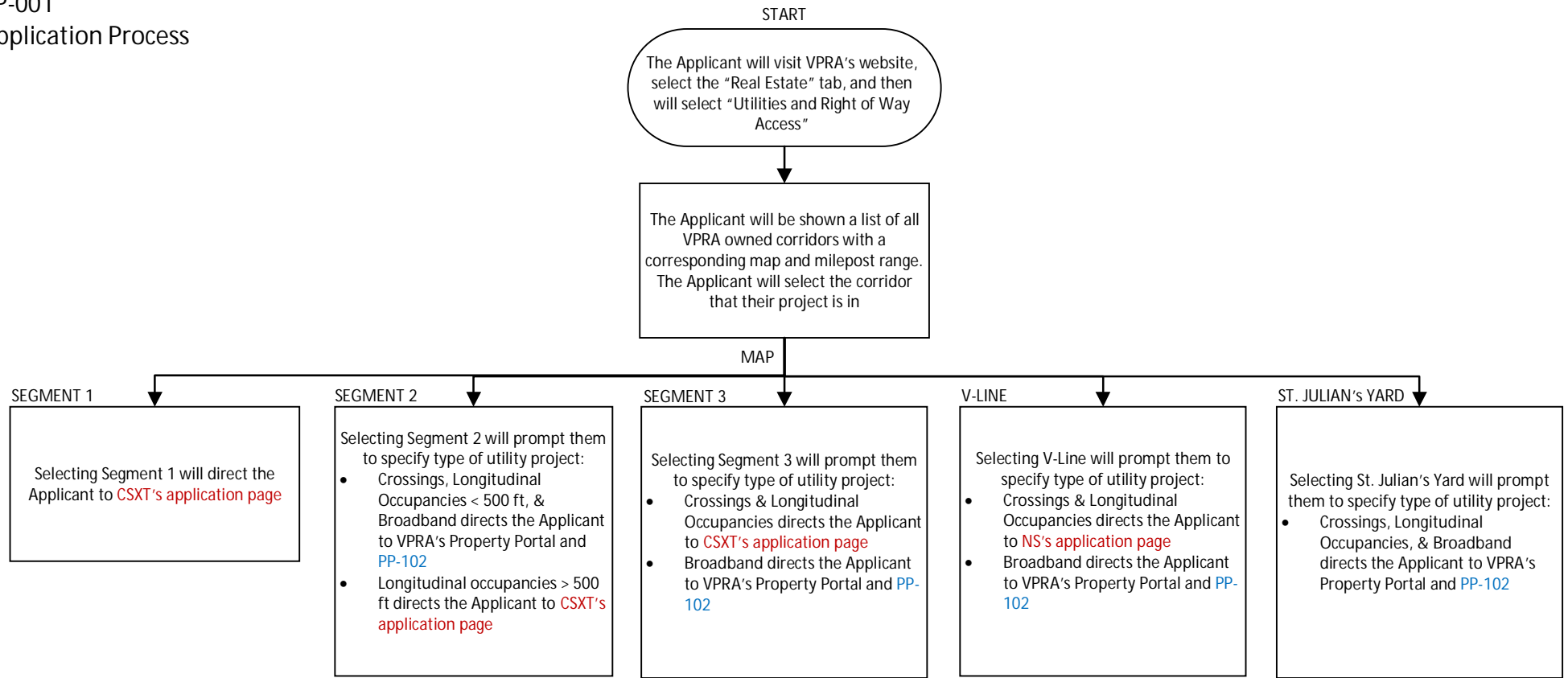


PP-001  
Application Process



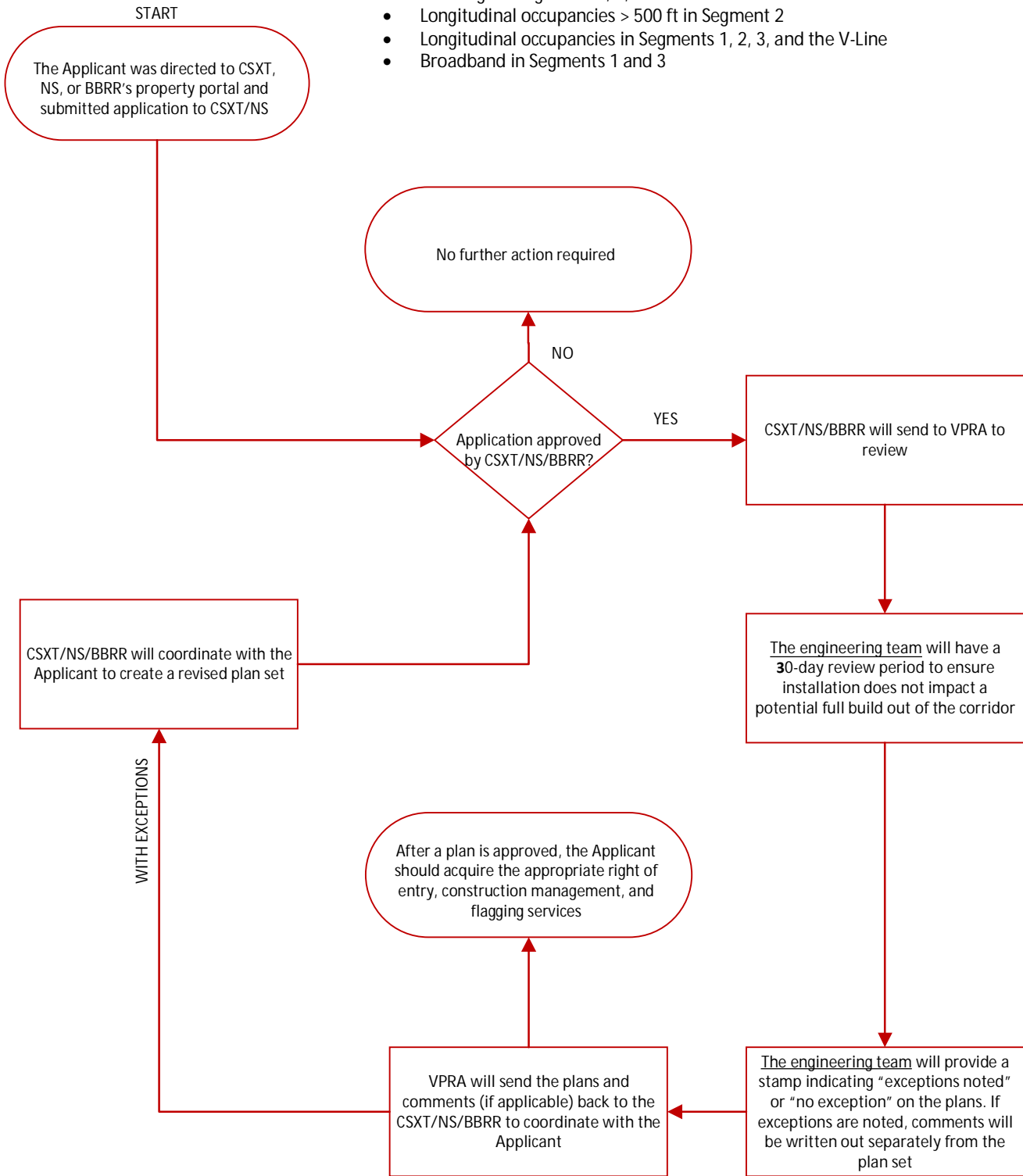
CSX: <https://www.csx.com/index.cfm/about-us/property/>

NS: <https://ns.railprospersmitting.com/>

BBRR: <http://buckinghambranch.com/contact-us/>

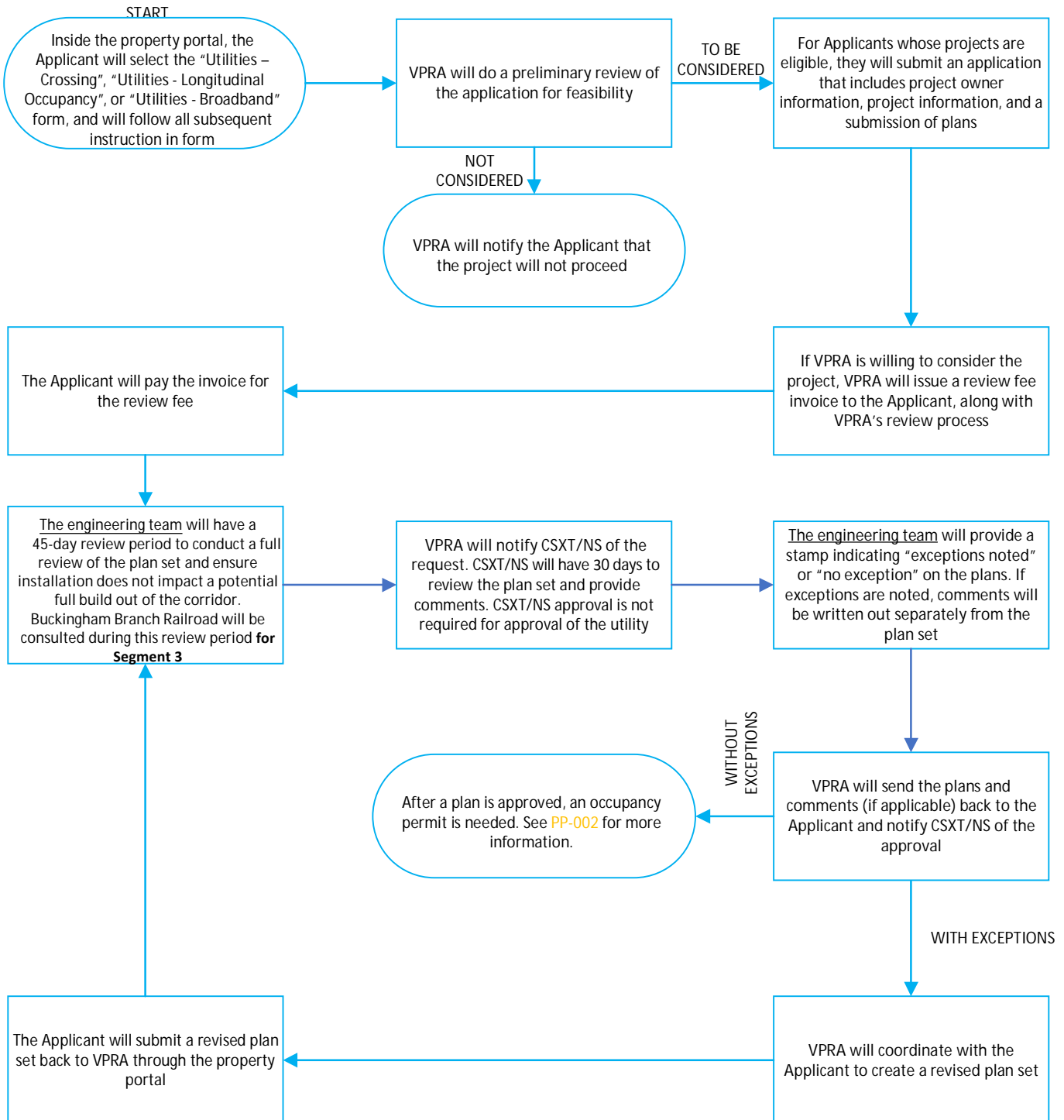
Process for CSXT/NS/BBRR led:

- Crossings in Segments 1, 3, and the V-Line
- Longitudinal occupancies > 500 ft in Segment 2
- Longitudinal occupancies in Segments 1, 2, 3, and the V-Line
- Broadband in Segments 1 and 3



Process for VPRA led:

- Crossings in Segment 2 and the St. Julian's Yard
- Longitudinal occupancies < 500 ft in Segment 2
- Longitudinal occupancies in St. Julian's Yard
- VPRA/CSX have a non-exclusive right to grant:  
Broadband in Segments 2 and 3
- VPRA has an exclusive right to grant:  
Broadband in the V-Line and St. Julian's Yard



## PP-002 Occupancy Permit Process

Process for VPRA led:

- Occupancy permit and fees

