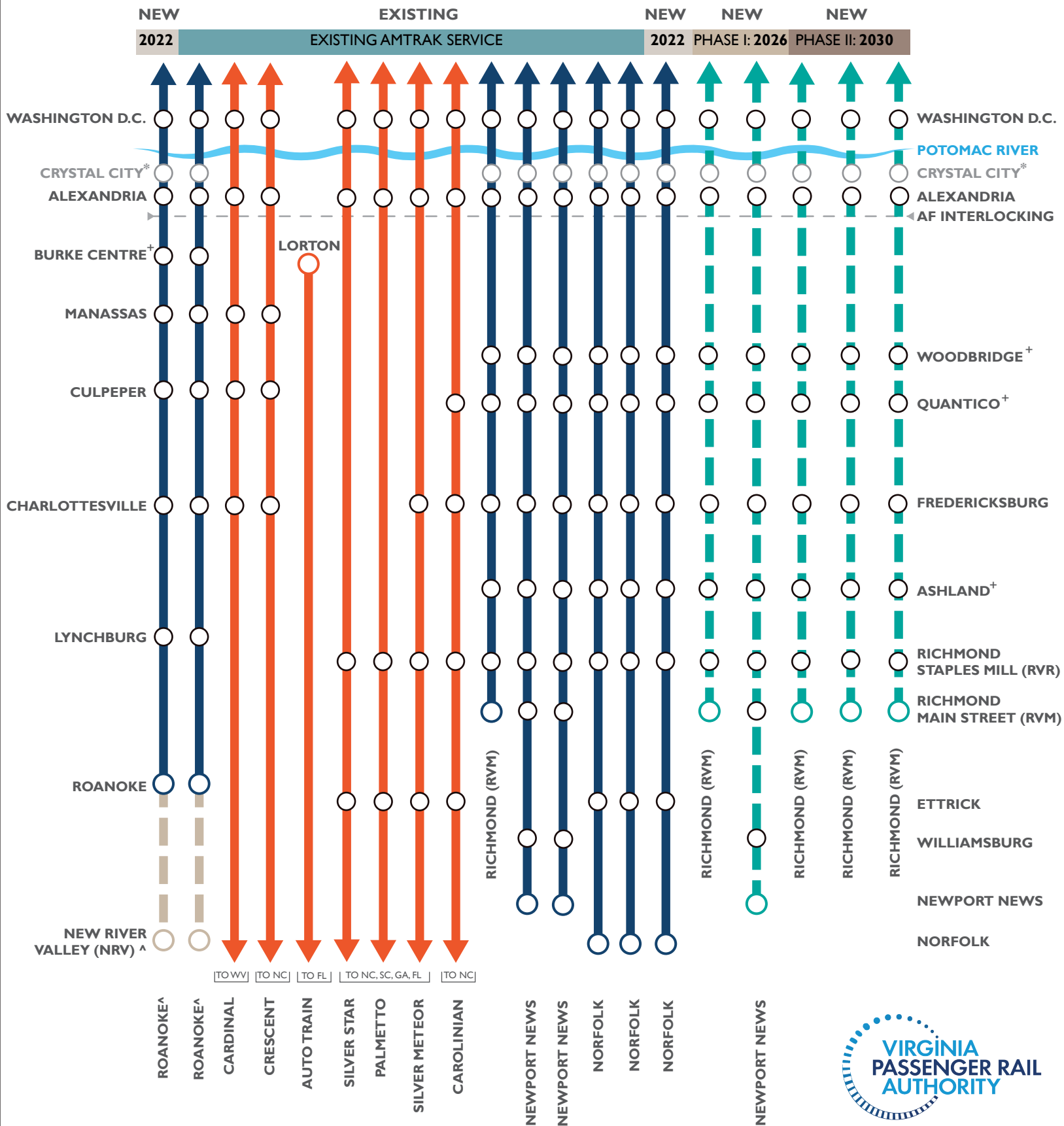


PROPOSED VIRGINIA-AMTRAK PASSENGER RAIL SERVICE PLAN



DATE: 12/13/2023

AMTRAK ROUTES IN VIRGINIA, EXISTING AND PROPOSED

- █ EXISTING VIRGINIA SUPPORTED SERVICE
- █ EXISTING LONG DISTANCE SERVICE
- █ FUTURE VIRGINIA SUPPORTED SERVICE
- █ EXTENSION TO NEW RIVER VALLEY

- NOTES:**
1. EACH LINE SEGMENT REPRESENTS A ROUND TRIP
 2. SCHEDULE TIME FOR ALL AMTRAK SERVICE MAY BE RESET TO ACHIEVE NEARLY HOURLY SERVICE
 3. + LIMITED SERVICE AT STATION. CHECK AMTRAK TRAIN SCHEDULE FOR DETAILS
 4. ^ SERVICE EXTENSION TO NEW RIVER VALLEY (NRV) ANTICIPATED IN 2026
 5. 2ND ROANOKE AND 3RD NORFOLK TRAINS BEGAN JULY 1ST, 2022
 6. * SERVICE LEVELS AT THE FUTURE AMTRAK CRYSTAL CITY STATION TO BE DETERMINED