


Environmental Resources

Through the planning and permitting processes, VPRA will identify existing resources in the project area and potential impacts. Data gathering has begun and will continue through fall 2024. The community is welcome to share information that may be helpful in this process. Below are examples of community and natural resources that we are studying.



Parks



Greenways, such as the Huckleberry Trail



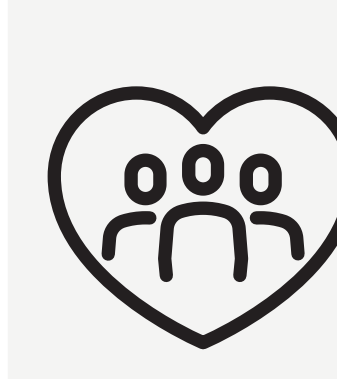
Schools and Libraries



Places of Worship




Medical Centers



Community Centers



Historic Resources



Noise Levels



Air Quality Levels



Visual and Aesthetic Resources

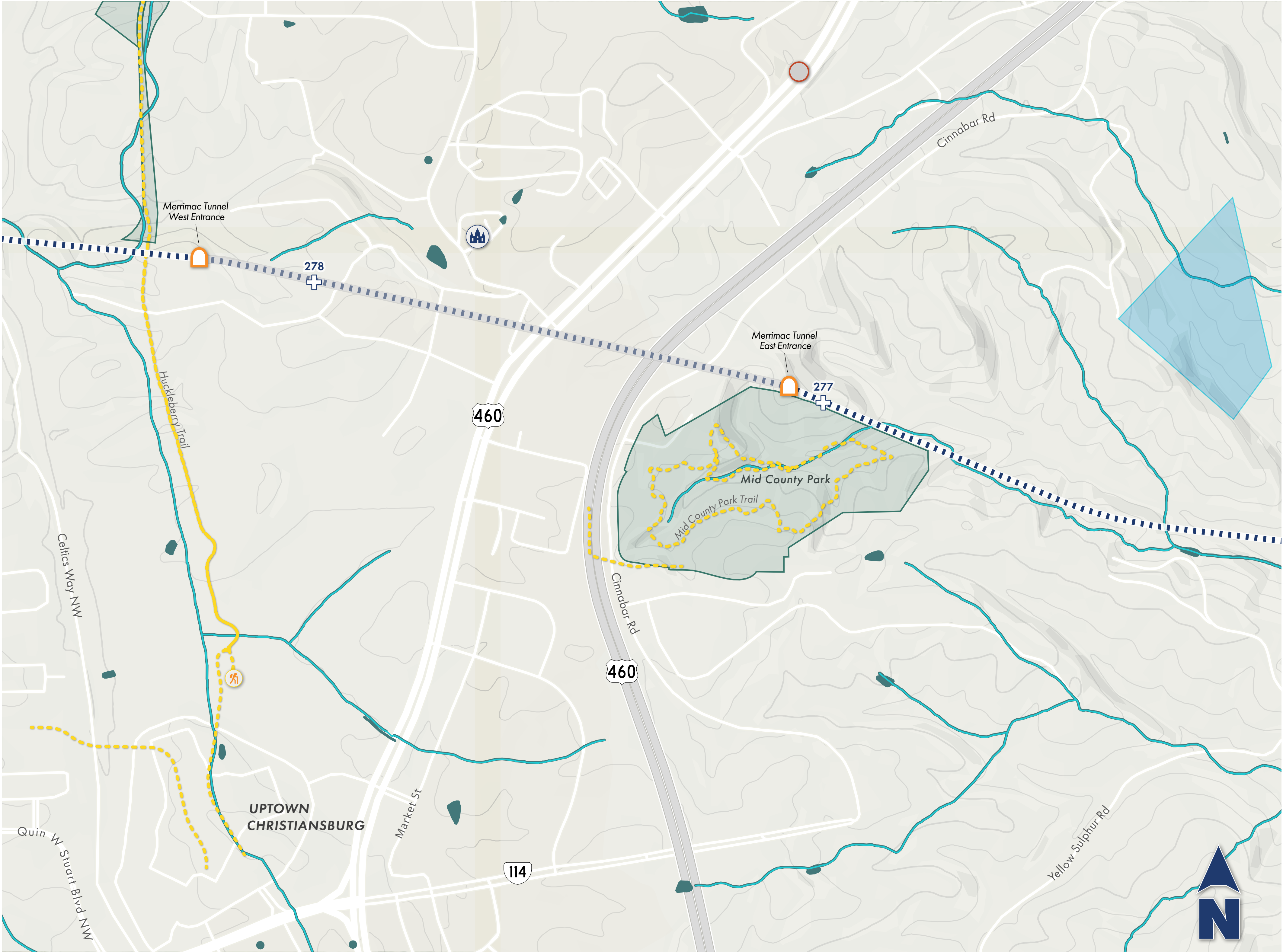


Streams and Wetlands

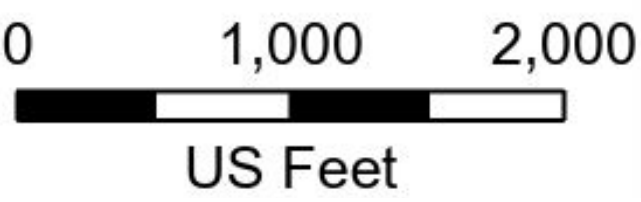


Protected Species

Environmental Resources in the New River Valley Mall and Cinnabar Road Area

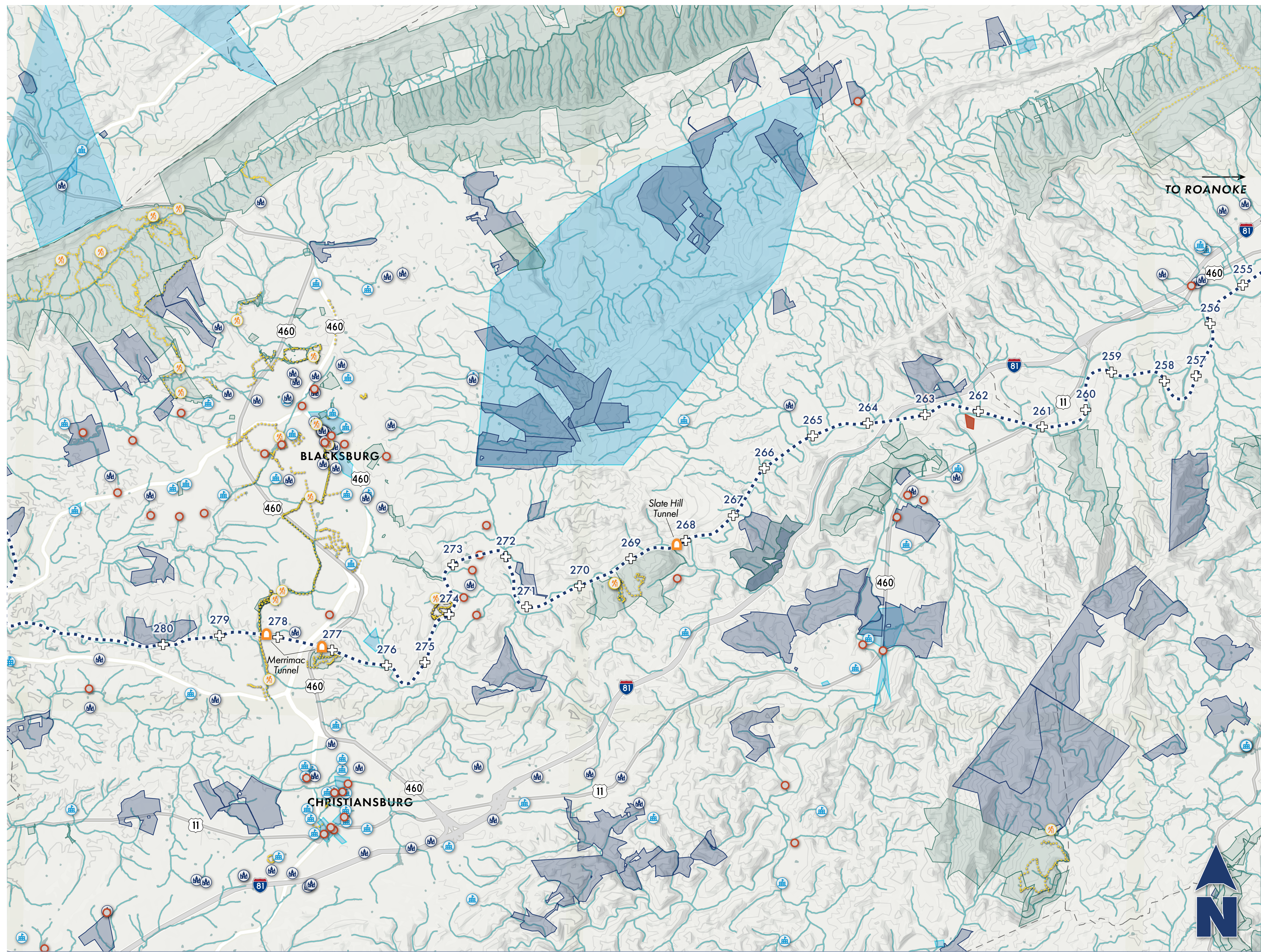


LEGEND

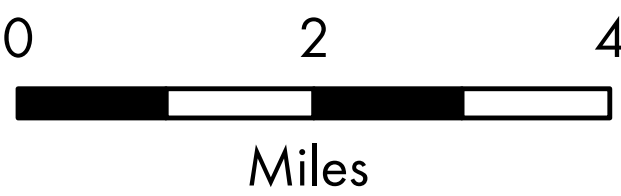


- V-Line Right-of-Way
- 277 V-Line Mile Marker
- Places of Worship
- Trailheads
- Wetlands
- Rail Tunnel
- Trails
- Streams
- National Register of Historic Places Points
- National Register of Historic Places Areas
- DCR Protective Management Lands

Environmental Resources along the V-Line Railroad Corridor



LEGEND



- V-Line Right-of-Way
- V-Line Mile Marker
- Places of Worship
- Trails
- Schools
- Trailheads
- DCR Conservation Easements
- DCR Protective Management Lands
- Streams
- Rail Tunnel
- National Register of Historic Places Areas
- Wetlands
- National Register of Historic Places Points