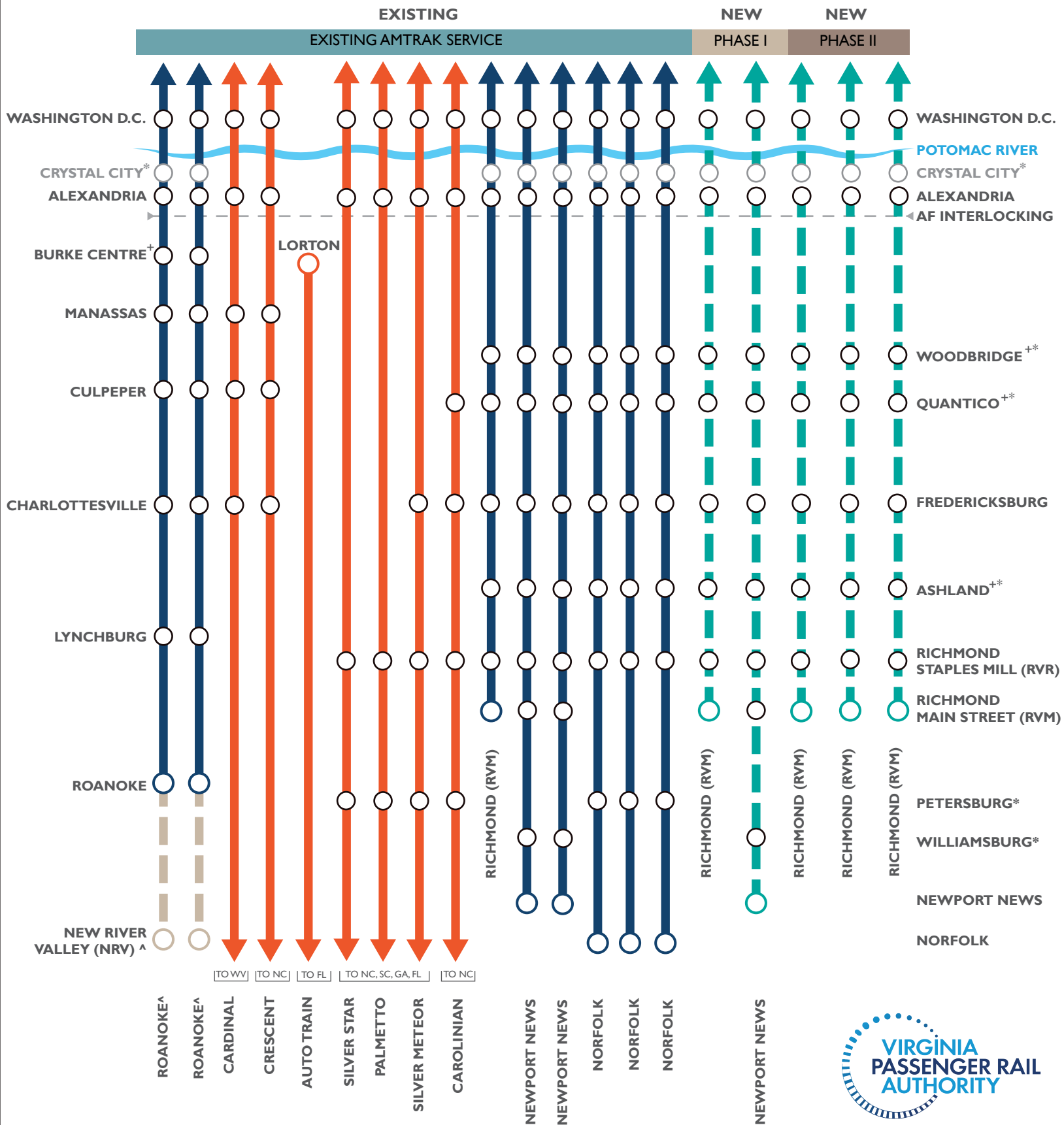


PROPOSED VIRGINIA-AMTRAK PASSENGER RAIL SERVICE PLAN



DATE: 05/31/2024

AMTRAK ROUTES IN VIRGINIA, EXISTING AND PROPOSED

- █ EXISTING VIRGINIA SUPPORTED SERVICE
- █ EXISTING LONG DISTANCE SERVICE
- - - FUTURE VIRGINIA SUPPORTED SERVICE
- - - EXTENSION TO NEW RIVER VALLEY

- NOTES:**
1. EACH LINE SEGMENT REPRESENTS A ROUND TRIP
 2. SCHEDULE TIME FOR ALL AMTRAK SERVICE MAY BE RESET TO ACHIEVE NEARLY HOURLY SERVICE
 3. + LIMITED SERVICE AT STATION, CHECK AMTRAK TRAIN SCHEDULE FOR DETAILS
 4. ^ SERVICE EXTENSION TO NEW RIVER VALLEY (NRV) ANTICIPATED IN 2028 OR SOONER.
 5. * FUTURE SERVICES LEVELS TO BE DETERMINED BY MARKET ANALYSIS