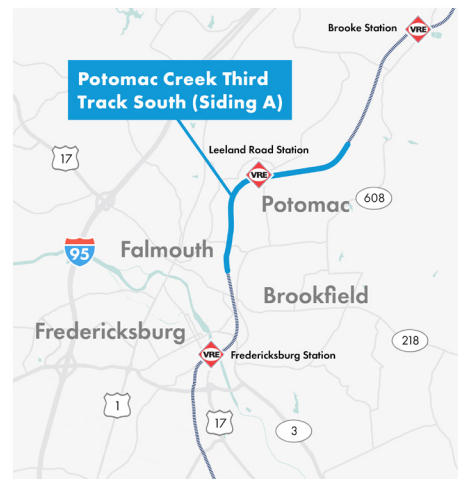


WHAT IS THE POTOMAC CREEK THIRD TRACK SOUTH PROJECT?

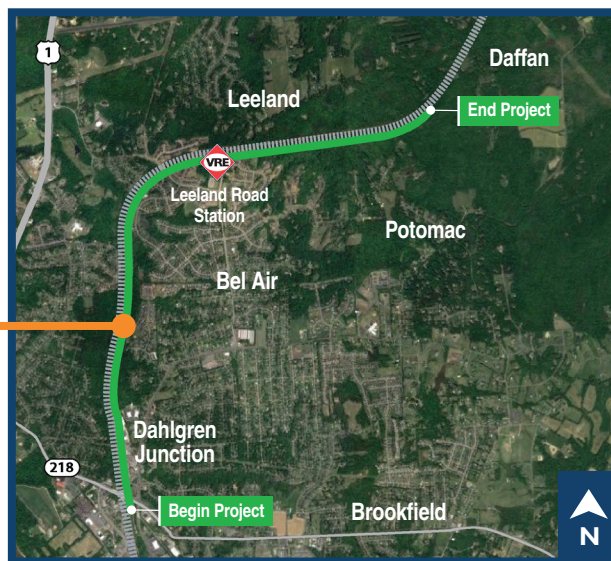
Project Status: In engineering design

The Virginia Passenger Rail Authority (VPR) is working to improve passenger rail service through Stafford County by building a third railroad track between the Brooke VRE station and the Fredericksburg station. The Potomac Creek Third Track South project will construct approximately four miles of third track near the Leeland Road VRE station. Infrastructure improvements will include reconstruction of the road bridge over the railroad at Leeland Road and a new rail bridge over Harrell Road at Claiborne Run.

The construction of Potomac Creek Third Track South will improve the efficiency and reliability of rail operations to support the planned growth of freight, passenger, and commuter rail traffic in Northern Virginia and the Southeastern United States.



View looking north



KEEP TRACK OF PROJECT UPDATES

vapassengerrailauthority.org

Email: contactus@vpri.virginia.gov

Call: (804) 303-8700

 /VAPassengerRail

 @VAPassengerRail

 @VAPassengerRail

 Virginia Passenger Rail Authority

 @virginiapassengerrailauthority

Visit the project
website:



VPRA is an independent authority created by the Virginia General Assembly in 2020 to promote, sustain, and expand the availability of passenger and commuter rail service in the Commonwealth. Partnering with Amtrak, Virginia Railway Express (VRE), Norfolk Southern Railway, and CSX, we are working to provide passenger rail service throughout the state that is convenient and affordable.

vapassengerrailauthority.org

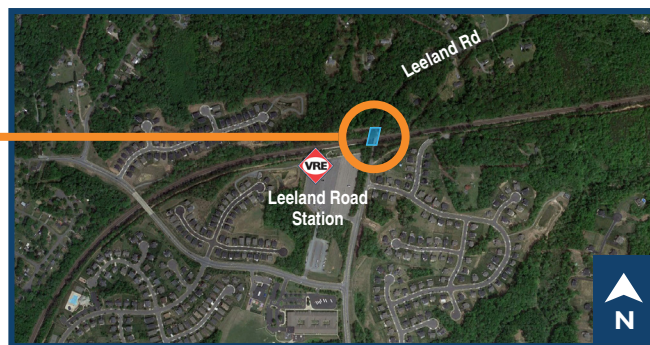
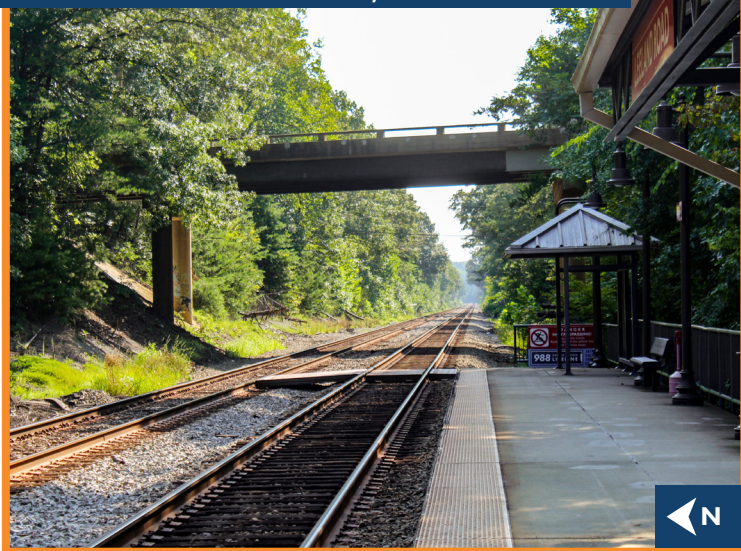
September 2024

LEELAND ROAD OVERPASS

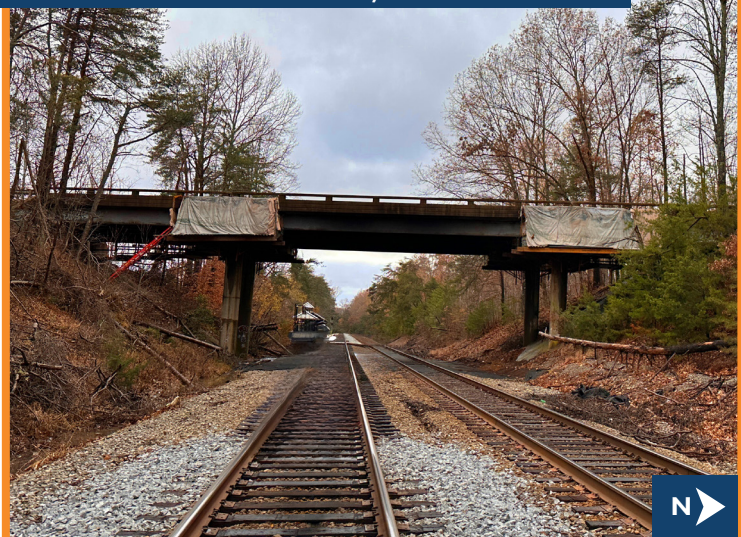
Project Status: In engineering design

The Leeland Road Overpass project is a subset of the Potomac Creek Third Track South project that will replace the existing road bridge over the CSX tracks in the vicinity of the Leeland Road VRE station. This bridge replacement project will increase the horizontal and vertical clearance of the road bridge to allow for the construction of the third track.

LEELAND ROAD OVERPASS, LOOKING EAST



LEELAND ROAD OVERPASS, LOOKING WEST



Common Rail Terms

Railroad siding:

An auxiliary track adjacent and connected to the mainline that allows a train to move, stop, or pass another train without being on the mainline.

Railroad bridge:

A structure for carrying one or more railroad tracks aerially over a depression or obstruction such as water, a roadway, or another railroad.

Third track:

Provides for trains what a third highway lane provides for vehicles; the third track allows a faster moving train to pass a slower moving train without obstructing train movements in the opposite direction.

Road bridge:

A structure for carrying passenger vehicles aerially over a depression or obstruction such as water, highway, or railroad.

Clearance:

The limiting dimensions (including height and width) for railroad equipment or shipments that allow trains to operate clear of obstructions along the right-of-way such as bridges, tunnels, platforms, or structures.