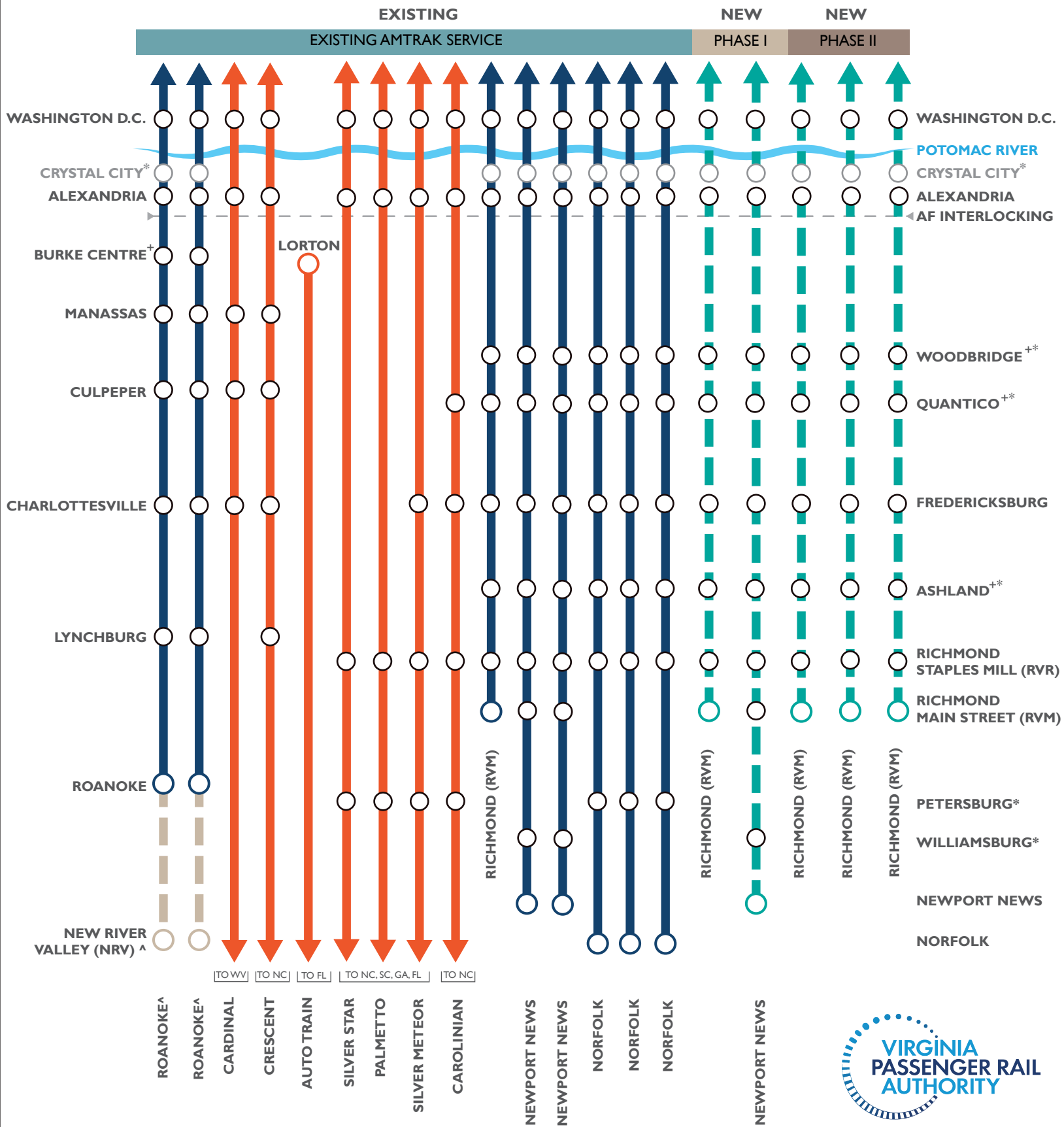


PROPOSED VIRGINIA-AMTRAK PASSENGER RAIL SERVICE PLAN



DATE: 03/06/2025

AMTRAK ROUTES IN VIRGINIA, EXISTING AND PROPOSED

- Blue line: EXISTING VIRGINIA SUPPORTED SERVICE
- Orange line: EXISTING LONG DISTANCE SERVICE
- Teal dashed line: FUTURE VIRGINIA SUPPORTED SERVICE
- Brown dashed line: EXTENSION TO NEW RIVER VALLEY

- NOTES:**
1. EACH LINE SEGMENT REPRESENTS A ROUND TRIP
 2. SCHEDULE TIME FOR ALL AMTRAK SERVICE MAY BE RESET TO ACHIEVE NEARLY HOURLY SERVICE
 3. + LIMITED SERVICE AT STATION, CHECK AMTRAK TRAIN SCHEDULE FOR DETAILS
 4. ^ SERVICE EXTENSION TO NEW RIVER VALLEY (NRV) ANTICIPATED IN 2028 OR SOONER.
 5. * FUTURE SERVICES LEVELS TO BE DETERMINED BY MARKET ANALYSIS