



# Long Bridge Project Overview and D.C. Construction Activities

April 29, 2025

Southwest Businesses  
Meeting

May 7, 2025

General Public Meeting





# Introductions



**Naomi Klein**  
Senior Planning Manager  
VPRA



**Scott Crumley**  
Design Manager  
Long Bridge Project



**Meredith Judy**  
Community Affairs  
Manager, VPRA



**Ian Langan**  
Project Manager  
Long Bridge Project  
VPRA



**Tom O'Rourke**  
Skanska Project Executive  
Long Bridge Construction  
Team



**Patrice Brooks**  
TB&A Community Affairs  
Long Bridge Construction  
Team





# Agenda

1. Introductions
2. Virginia Passenger Rail Authority (VPRA)
3. Long Bridge Project Background
4. Long Bridge North
  - Construction Timeline
  - Maintenance of Traffic, Pedestrians, Bicycles, Boats

# Who is Virginia Passenger Rail Authority (VPRA)?

- Created in 2020 by the Virginia General Assembly
- Responsible for expanding and promoting passenger and commuter rail
  - State-sponsored Routes and Marketing
  - Capital Program

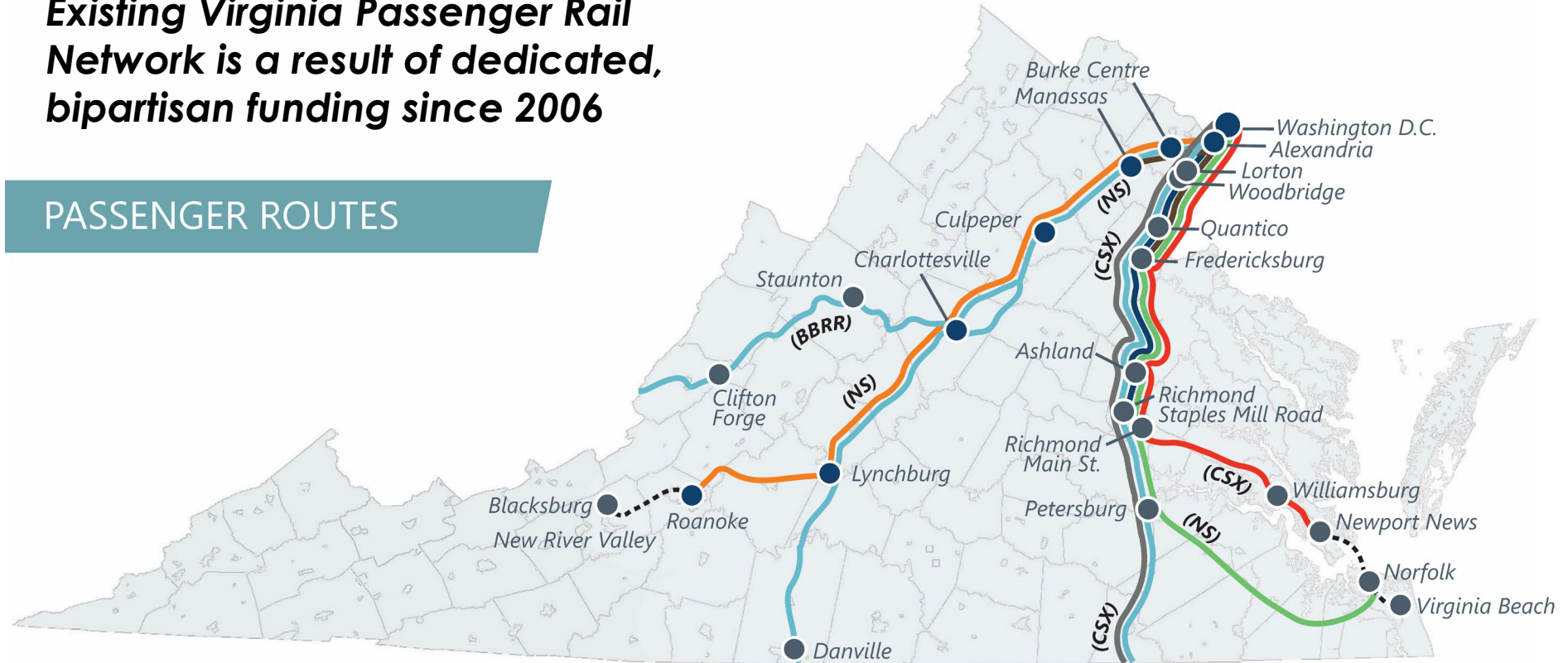




# Virginia Passenger Rail Network 2025

**Existing Virginia Passenger Rail Network is a result of dedicated, bipartisan funding since 2006**

## PASSENGER ROUTES



### Virginia State-Supported Services

- Washington-Roanoke (Route 46)
- Washington-Newport News (Route 47)
- Washington-Norfolk (Route 50)
- Washington-Richmond (Route 51)

### Host Railroads

- CSX - CSX Transportation
- NS - Norfolk Southern
- BBRR - Buckingham Branch
- Passenger Station

### Other Services

- Other Amtrak State-Supported
- Amtrak Long-Distance
- VRE Commuter Rail
- Thruway Bus

### Four State-Supported Amtrak Routes:

8 daily roundtrips

- Roanoke: 2
- Richmond: 1
- Newport News: 2
- Norfolk: 3

### Five Amtrak Long-Distance Roundtrips

### One NC State-Supported Roundtrip

### Two Virginia Railway Express (VRE) Commuter Routes:

16 daily roundtrips

- Manassas: 8
- Fredericksburg: 8

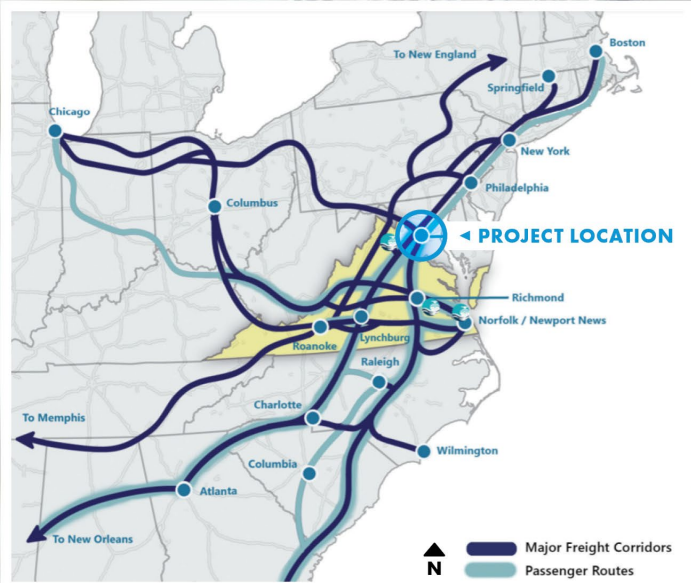
# VPRA Capital Program: DC to Richmond

**11 projects** unlock new passenger rail service and set the stage for future service expansion.

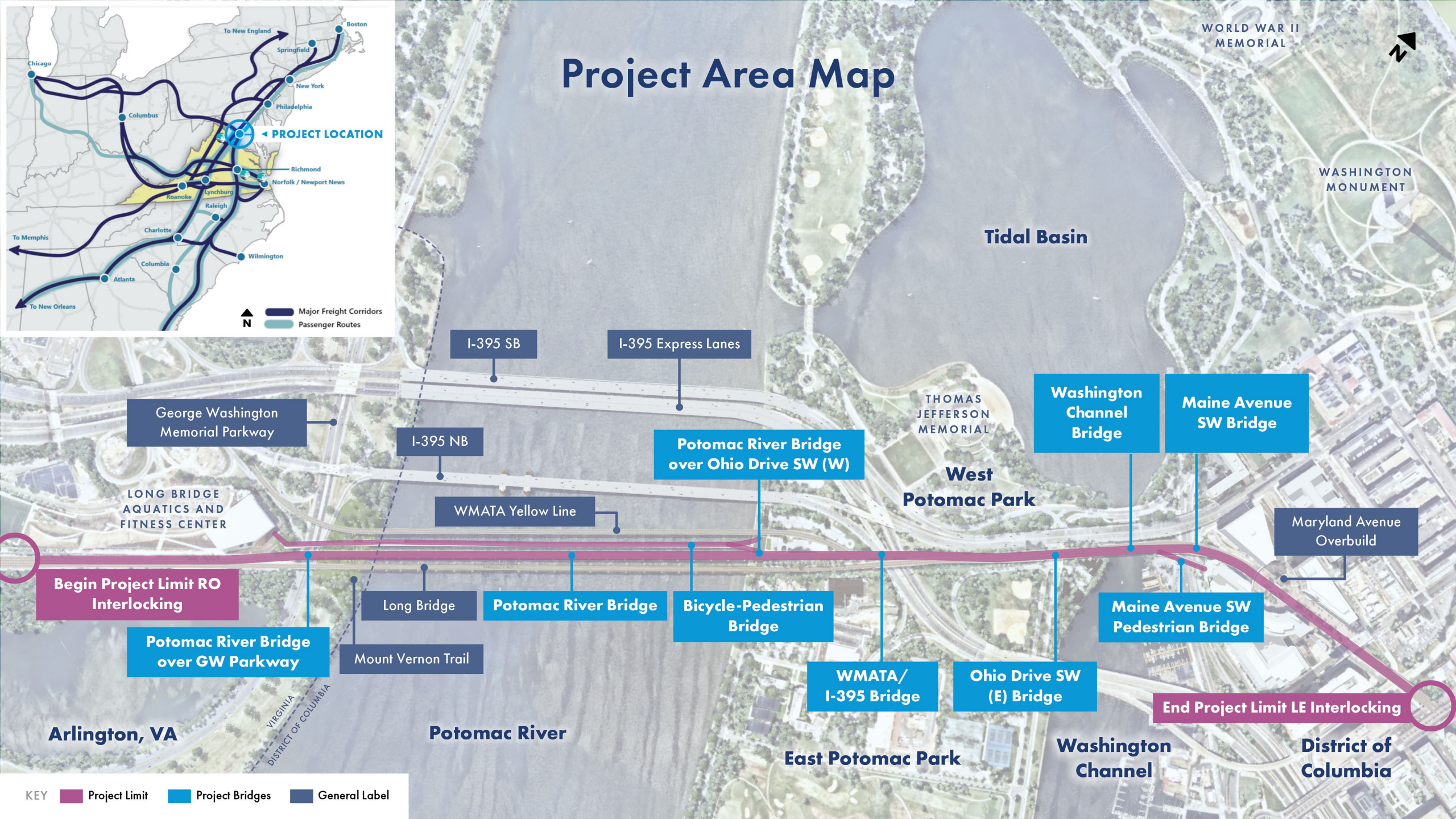
- **Two new Amtrak** and **three new VRE roundtrips** (including late night & weekend service).
- **Future capacity** for an **additional three new Amtrak roundtrips** and **two additional VRE**.







# Project Area Map



KEY  
Project Limit  
Project Bridges  
General Label



# Project Overview



*Rendering of bridges looking from Virginia*

**1.8 mile**  
Project

**20,000**  
Feet of Track

**6,500 ft**  
Rail Bridges

**3**  
Rail Operators

**2,800 ft**  
Potomac River Bike  
-Pedestrian Bridge

**2**  
New Tracks  
VA to DC

**3,500 ft**  
Retaining/  
Crashwalls

**5**  
New Rail  
Bridges

**70**  
Daily  
Trains

**1**  
New Potomac River  
Bike/Ped Bridge

**37 +**  
Stakeholders

**1**  
Maine Ave Pedestrian Bridge





# North and South Packages



- 1 A New Two Track Bridge Over the Potomac River
- 2 A New Bicycle Pedestrian Bridge Over the Potomac River
- 3 A New Two Track Bridge Over I-395

- 4 A New Four Track Bridge Over Ohio Drive SW
- 5 A New Four Track Bridge Over the Washington Channel

- 6 A New Four Track Bridge Over Maine Avenue SW
- 7 A New Pedestrian Bridge Over Maine Avenue SW

## South Package

- Constructs a rail bridge and bike/ped bridge over the George Washington Memorial Parkway & Potomac River
- Design-build contract
- Construction estimated to begin mid-2026

## North Package

- Constructs new bridges in the District north of the Potomac River, as well as retaining walls, embankments, ground improvements & crash walls
- Progressive design-build contract
- Early works construction packages to begin Spring/ Summer 2025

# Project Schedule

## DDOT Led

### 2011–2016 Pre-NEPA

2011 FRA ARRA Grant

Phase I Study  
2012–2015

Phase II Study  
2015–2016

DDOT-DRPT Partnership  
through MOU

### 2016–2020 NEPA

2016 FRA TIGER Grant

FEIS/ROD Complete  
September 2020

Long Bridge Act  
December 2020

Identified Mitigation  
Commitments & Permit  
Identification

## VPRA Led

### 2021–2023 Preliminary Engineering (PE)

Design 15% to 30%

Determine Project  
Delivery Method

Begin Environmental  
Mitigation & Permits

Agreements with  
Partner Organizations

### 2023–2030 Final Design & Construction

Design-Build and  
Progressive Design-  
Build Project Delivery

Land Acquisition  
Activities

Permitting

Final Design &  
Construction





# Major Stakeholders



US Army Corps  
of Engineers®



REPUBLIC  
PROPERTIES CORPORATION



U.S. Department of Transportation  
Federal Railroad Administration



WABA  
WASHINGTON AREA  
BICYCLIST ASSOCIATION



The Washington Marina  
Yacht Basin One



... and more



# Value-Add for the District



**Total Estimated Construction  
Value to the District =  
\$300M**



## **Additional Safety and Security Features**

Corridor wide fencing,  
security lighting, retaining/  
crash walls, clearance  
detectors, improved bridge  
fender system/lighting



## **Vertical and Horizontal Clearance Improvements**

I-395 rail bridge, Maine Ave rail  
bridge, Maine Ave pedestrian  
bridge, Potomac River  
Maine Ave sidewalks, Anacostia  
Trail, Ohio Drive, I-395



## **14<sup>th</sup> St Off-Ramp**

Improved intersection  
alignment, signals,  
pedestrian  
movements



## **New Pedestrian Bridge Over Maine Avenue**

Includes new ADA  
compliant ramp  
replacing current  
stairs-only access



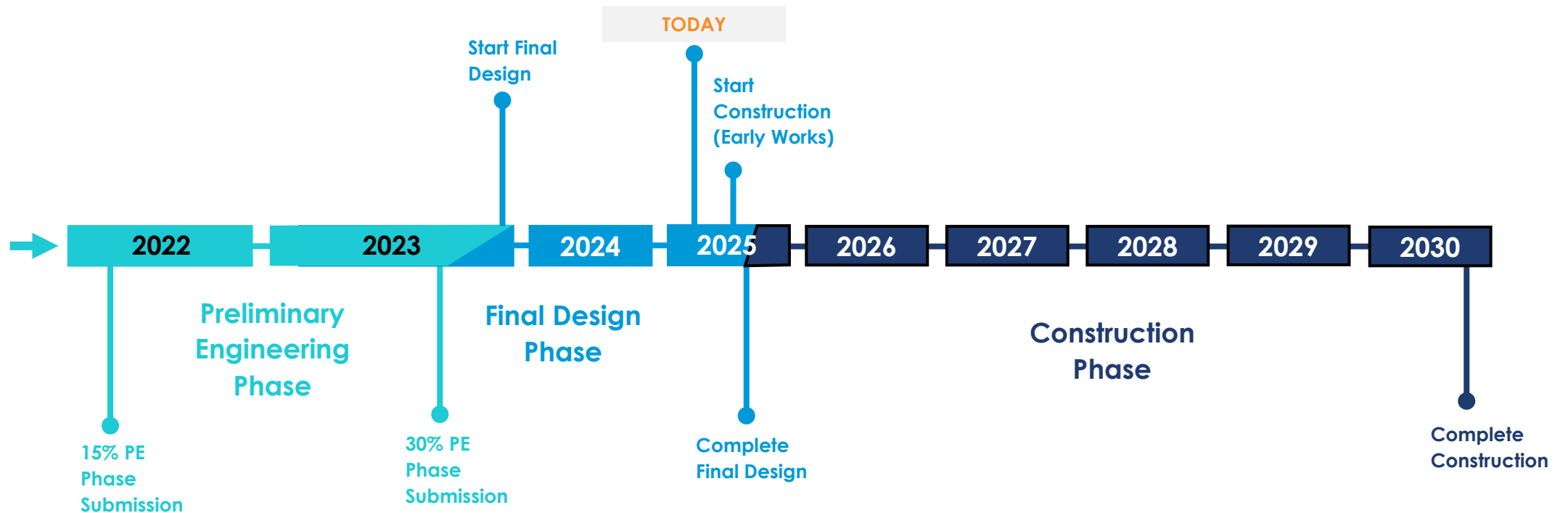
## **New Pedestrian Bridge over Potomac River and George Washington Parkway**

Convenient, safe connection between Virginia and the District for park  
visitors, recreationists, and pedestrian and bike commuters  
Connects East and West Potomac Parks, George Washington Memorial  
Highway Park, Mt. Vernon Trail, and Arlington's Long Bridge Aquatics & Fitness  
Center and Park



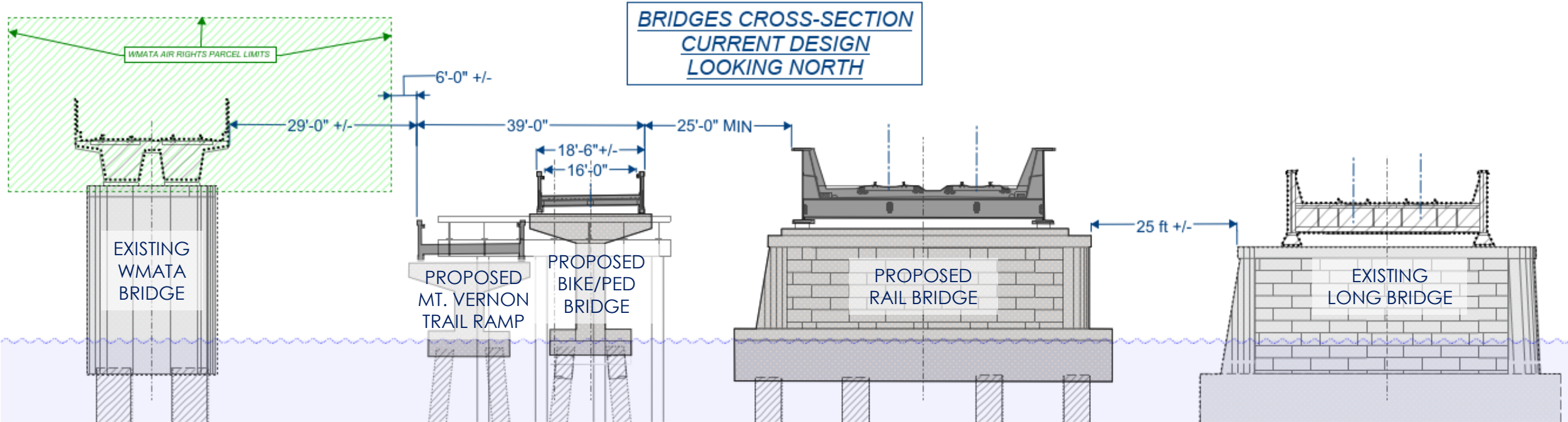
# Design & Construction Timeline

## North Package



# Bridge Alignments

Looking from Arlington, Toward DC

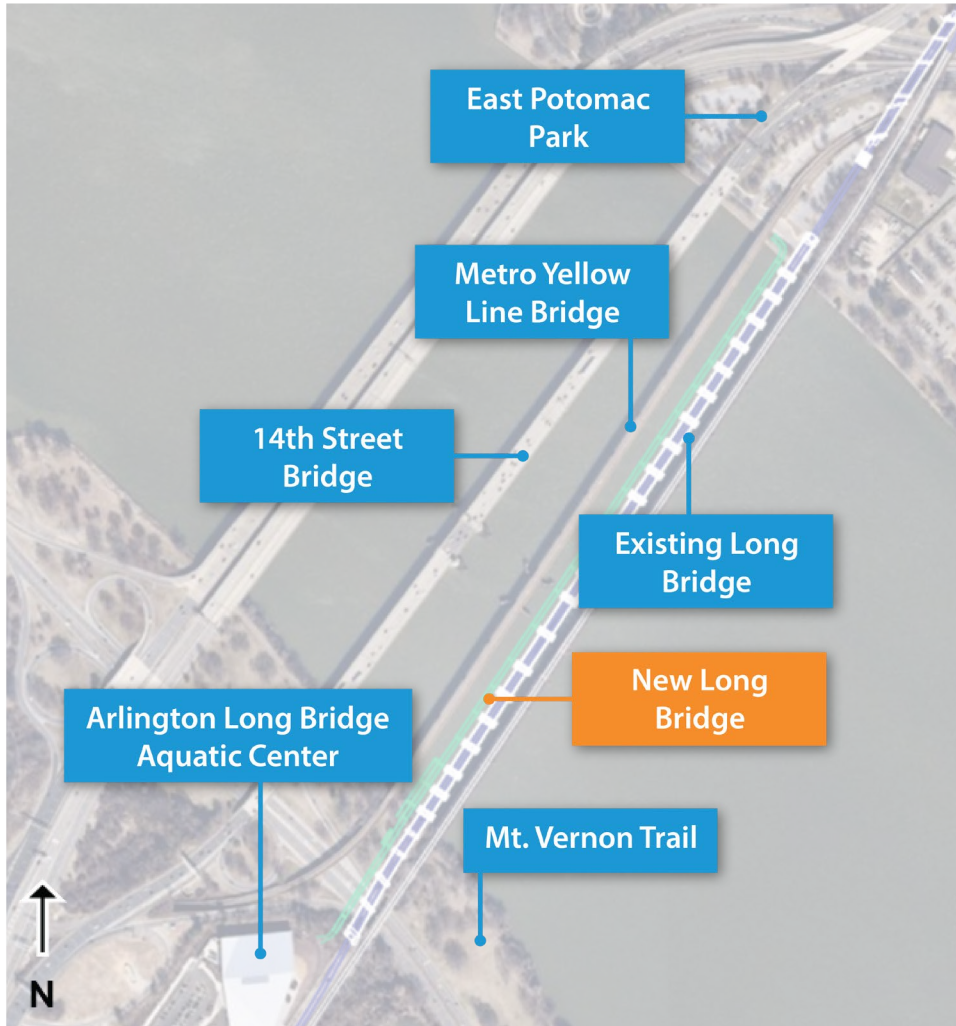


## Space Constraints:

- 25 foot minimum between structures to ensure safety, security, and to allow for future bridge maintenance.
- Avoid WMATA pile foundations and air rights.

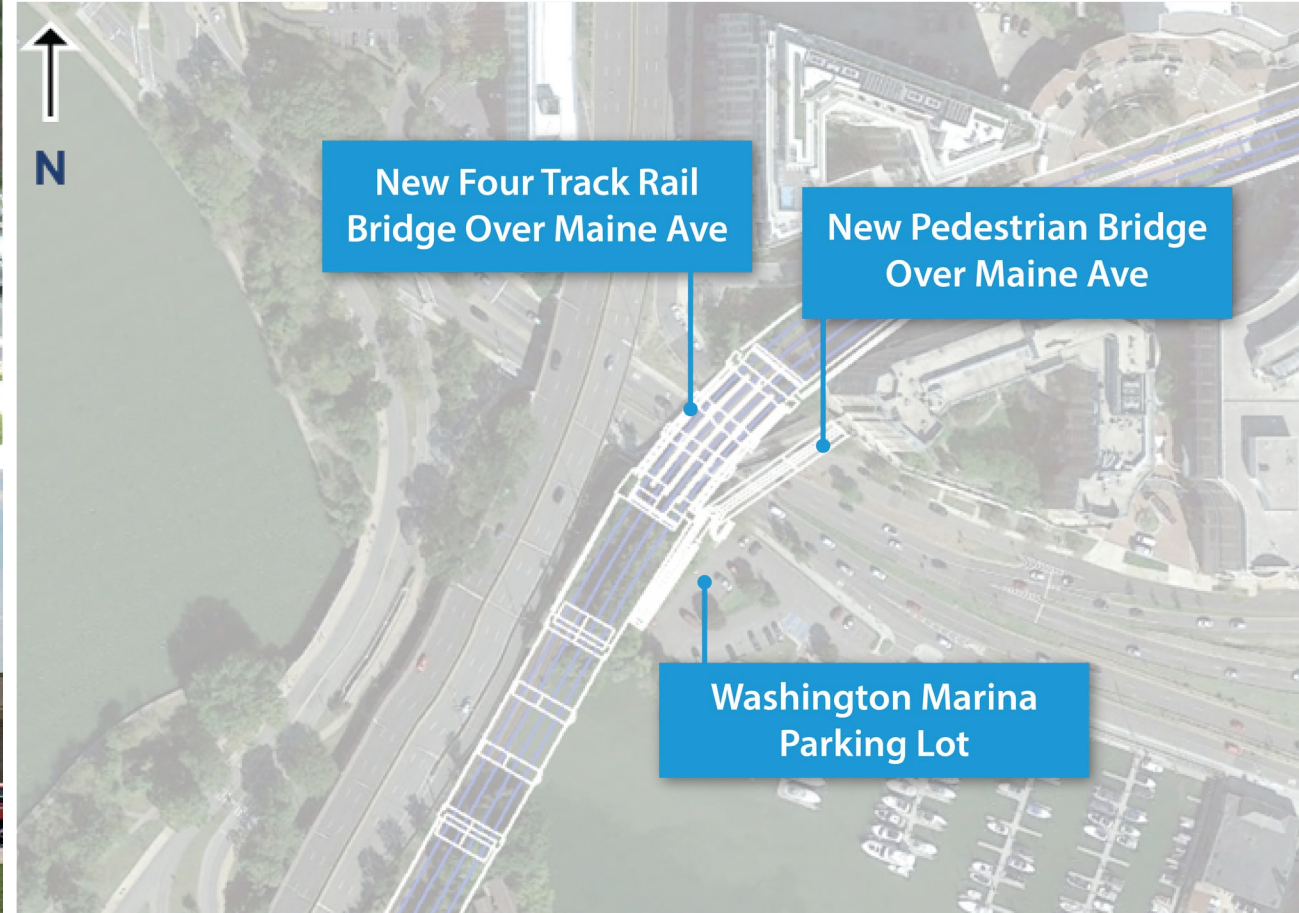


# Potomac River Bridge





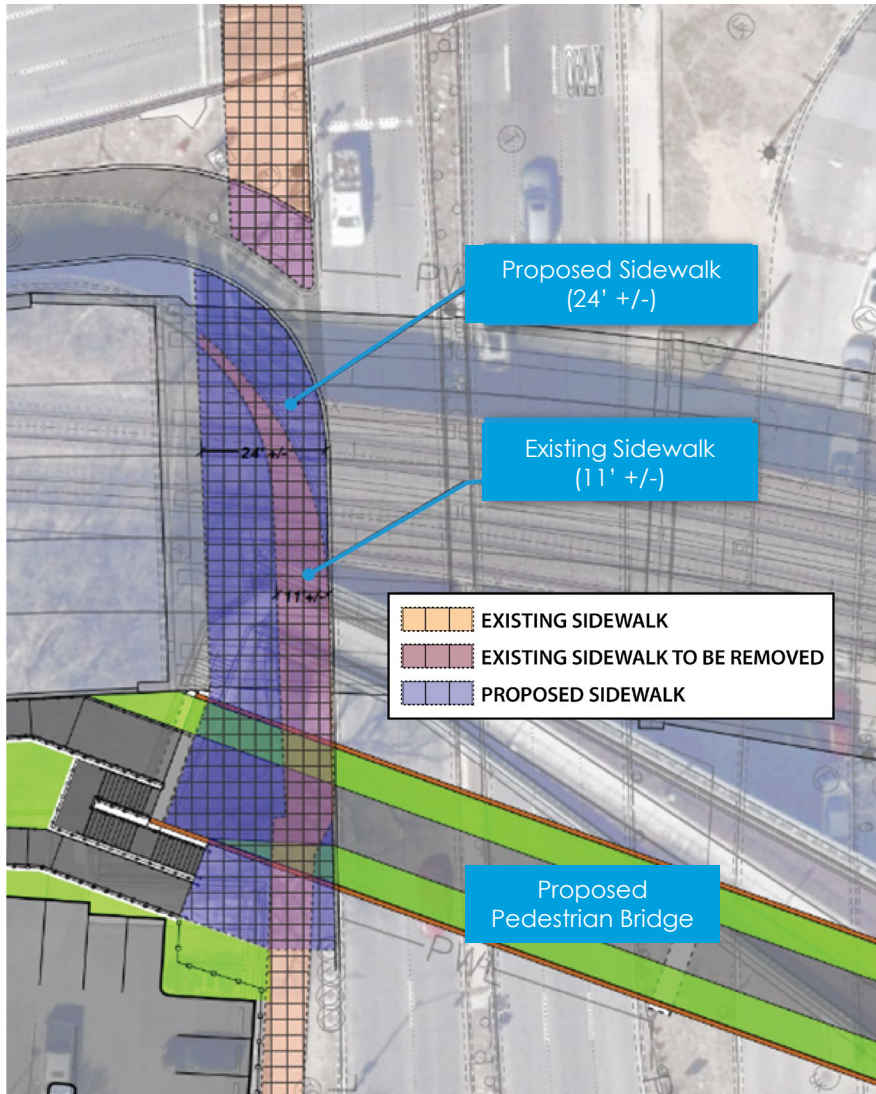
# Maine Ave SW Rail Bridge





# Maine Avenue SW Rail Bridge

## Maine Avenue SW Rail Bridge – Sidewalk and Ramp



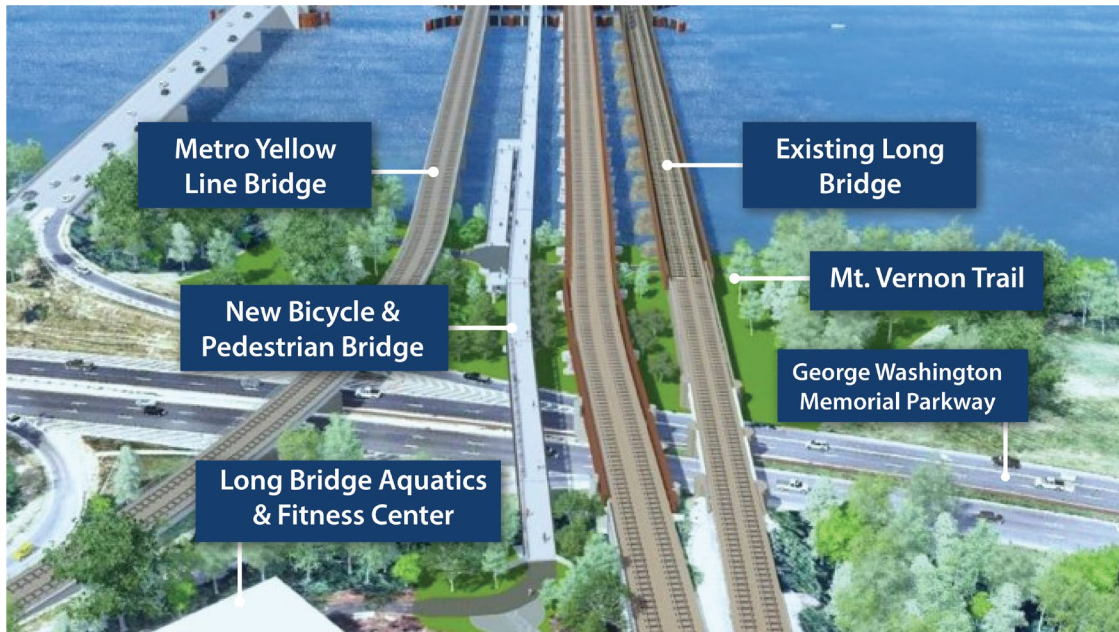
- Improve sight lines and visual experience for drivers, pedestrians and bicyclists.
- Proposed design will widen sidewalk (Anacostia Riverwalk Trail) from 11 feet to 24.5 feet.



Existing Trail/Sidewalk Width under Existing Rail Bridge



# Potomac River Bicycle – Pedestrian Bridge



- New recreational connection between Mt. Vernon Trail and East Potomac Park
- DC to own and maintain
- More than double the width of the current bike-pedestrian path
- Existing 14<sup>th</sup> Street Bridge Bike-Ped Path will remain





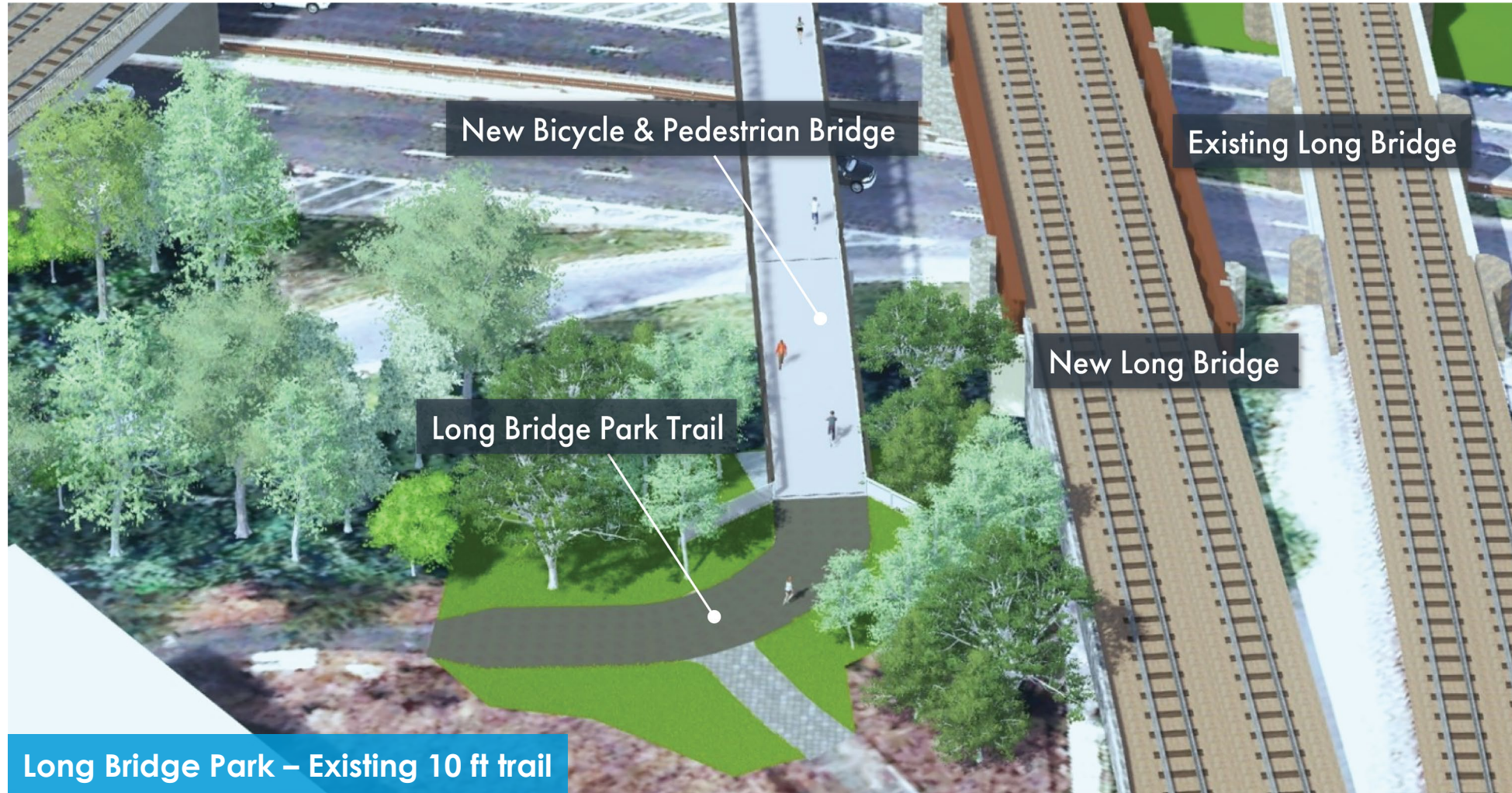
# Existing Bicycle-Pedestrian Network





# Connection Designs

## Long Bridge Park, Arlington





# Connection Designs

## Mount Vernon Trail, Arlington



View from Long Bridge Park: New Rail & Bicycle-Pedestrian Bridges



# Connection Designs

## East Potomac Park – Ohio Drive SW



View from East Potomac Park (Ohio Drive): New Rail & Bicycle-Pedestrian Bridges



# Pedestrian Bridge Over Maine Avenue

## Ownership & Coordination

**Privately owned** by businesses on **Maryland Ave Overbuild (PPIA)**.

## Stakeholder Coordination includes:

- **Pedestrian Bridge Owners** – Design input and approvals.
- **Washington Marina Company & The District** – Addressing parking lot impacts.
- **The Wharf** – Managing construction impacts and activities
- **DDOT** – Maintenance of Traffic (MOT)
- **National Capital Planning Commission (NCPC) and Commission of Fine Arts (CFA)** – Overseeing design and aesthetic decisions.

## Maine Avenue Rail Bridge Expansion

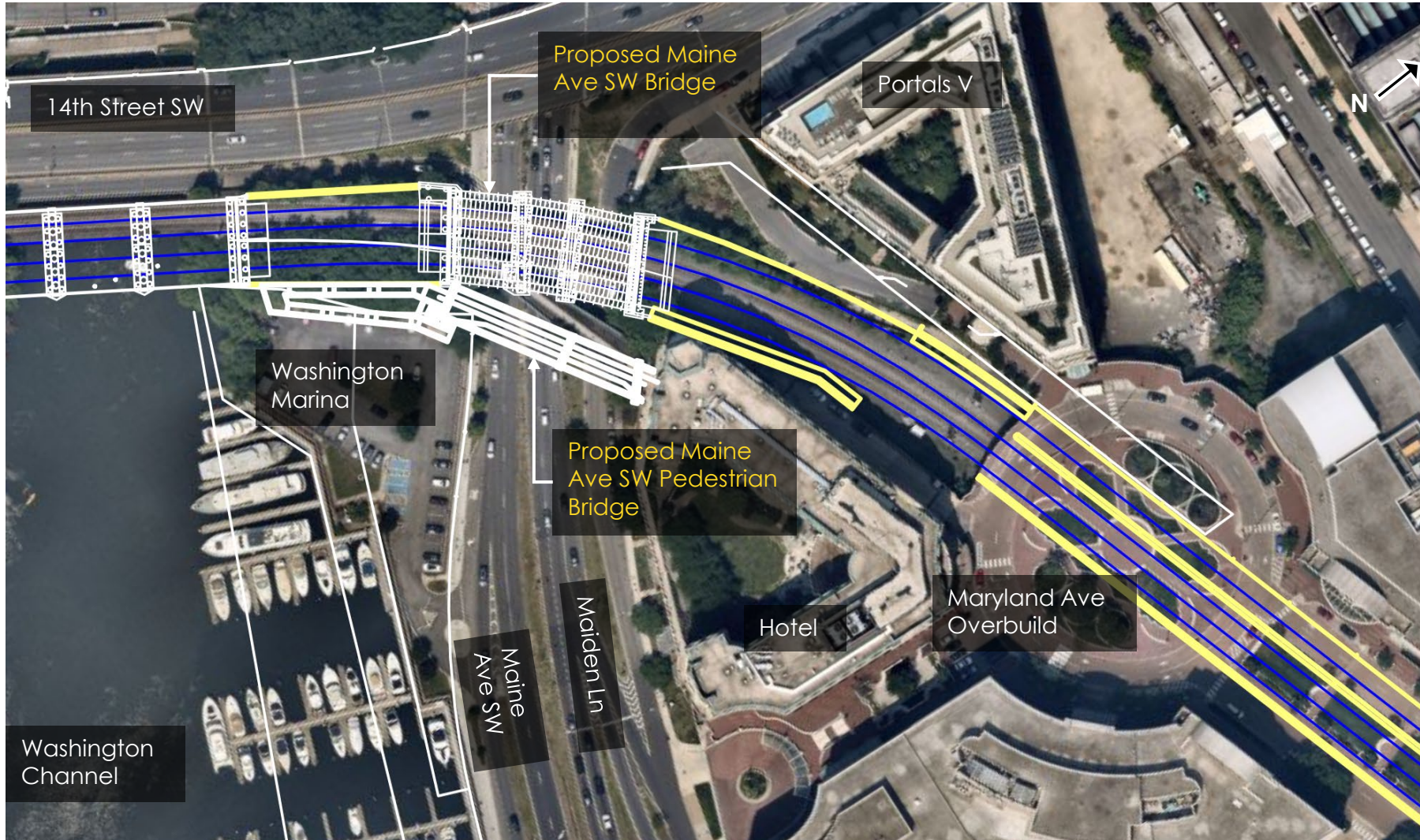
- **Existing two-track rail bridge** will be **removed and replaced** with a **four-track rail bridge**.
- **Tracks southwest of Maryland Avenue Linear Park** will be expanded from **two to four**.
- **Proposed aesthetic design** will **maintain the character** of the existing bridge.



Maine Ave SW/Maryland Ave SW Overbuild area



# Maine Ave SW & Maryland Ave Overbuild

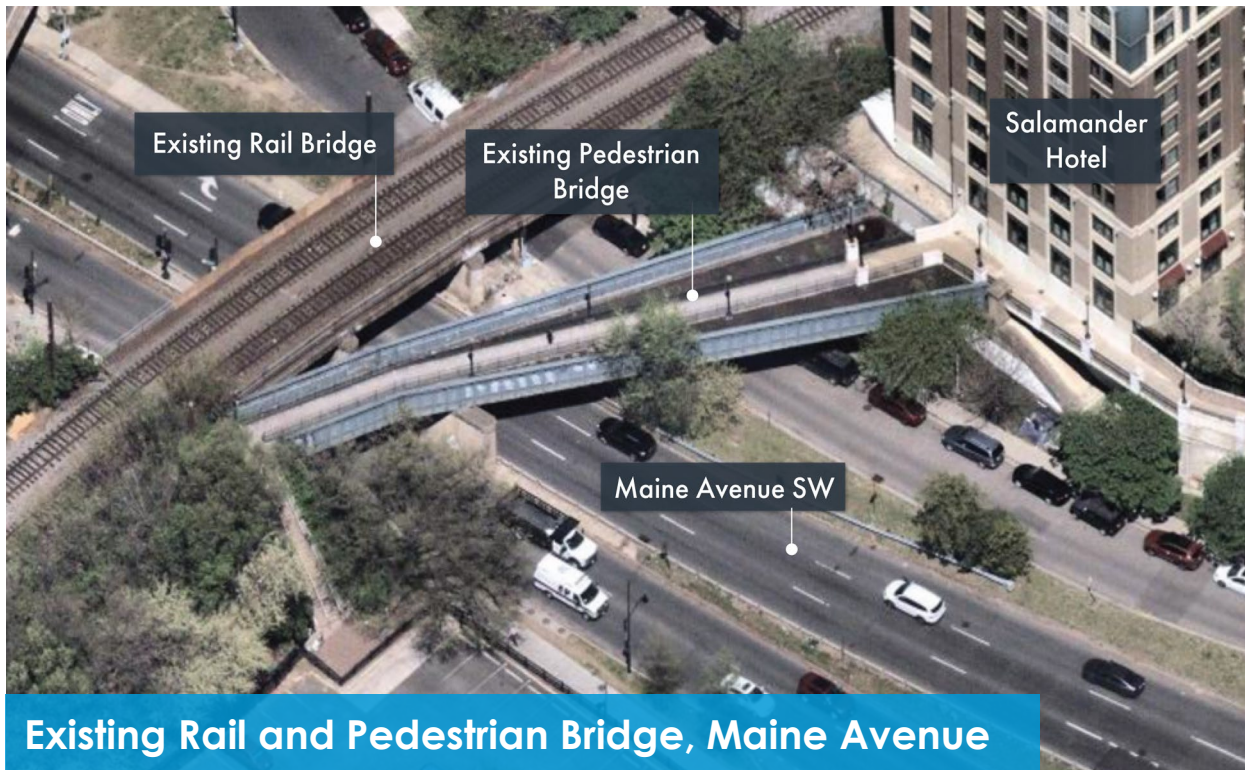


- Existing two-track rail bridge across Maine Avenue SW replaced with a four-track rail bridge.
- Expand existing tracks southwest of the Maryland Avenue Linear Park from two to four.
- New bridge will resemble the characteristics of the existing bridge.



# Maine Ave SW Pedestrian Bridge

## Existing Pedestrian Bridge



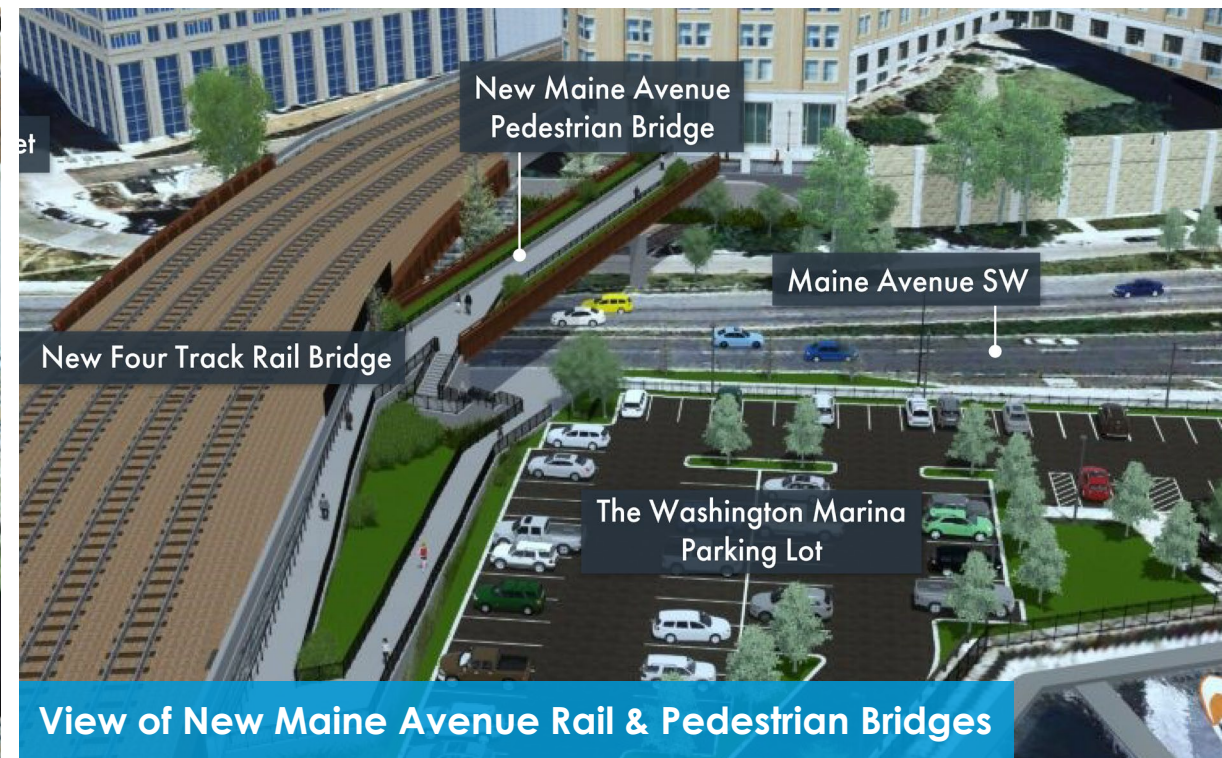
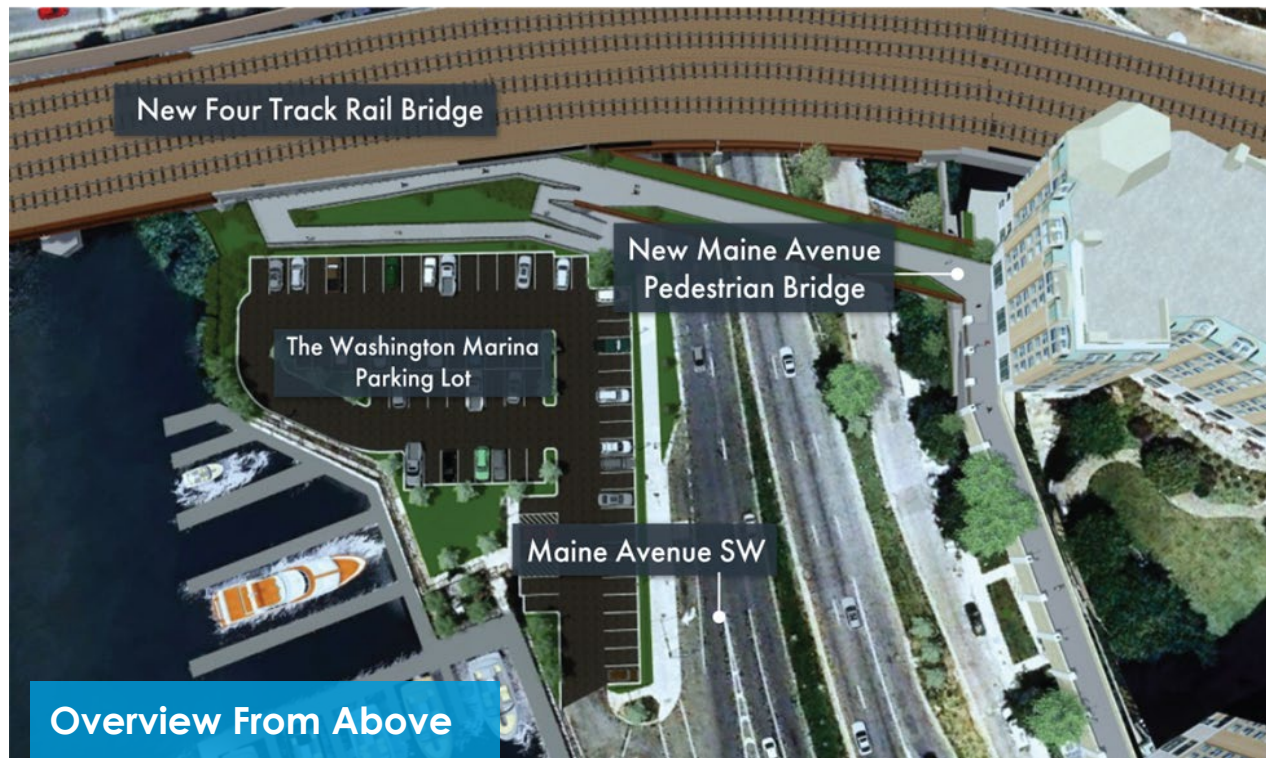


# Pedestrian Bridge Over Maine Avenue



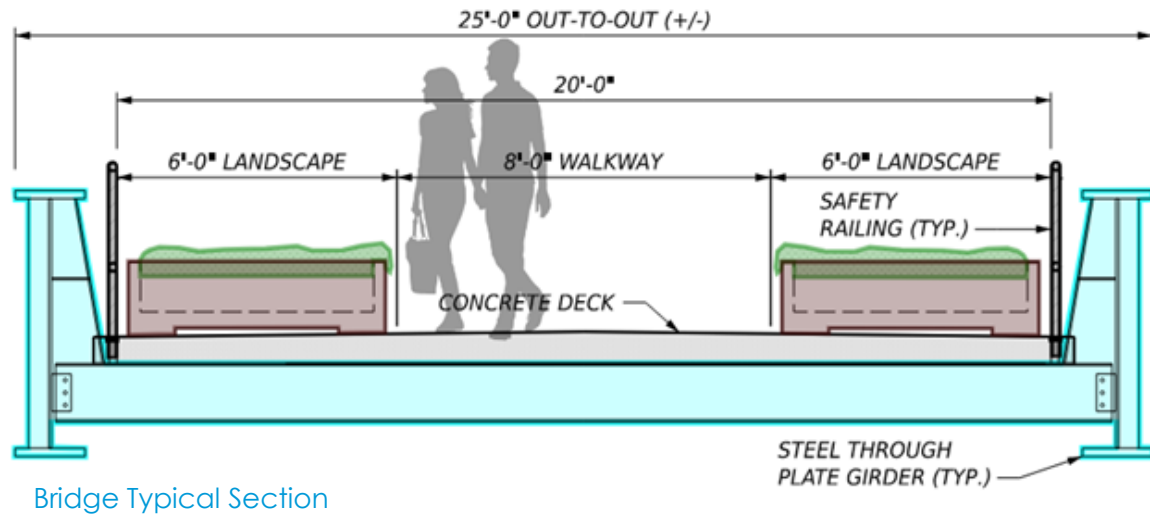


# Pedestrian Bridge Over Maine Avenue





# Maine Ave SW Pedestrian Bridge





# What is Happening Now?

## Pre-Construction Activities

- Archaeological testing
- Vibration monitoring
- Borings
- Test piles
- Tree and brush clearing
- Maintenance of Traffic Plans (auto, pedestrian, bike, boat)



# Stakeholder Coordination

## Stakeholders (monthly/weekly meetings):

- CSX, Virginia Railway Express (VRE), Amtrak
- District Department of Transportation (DDOT)
- National Park Service (NPS)
- Adjacent Property Owners

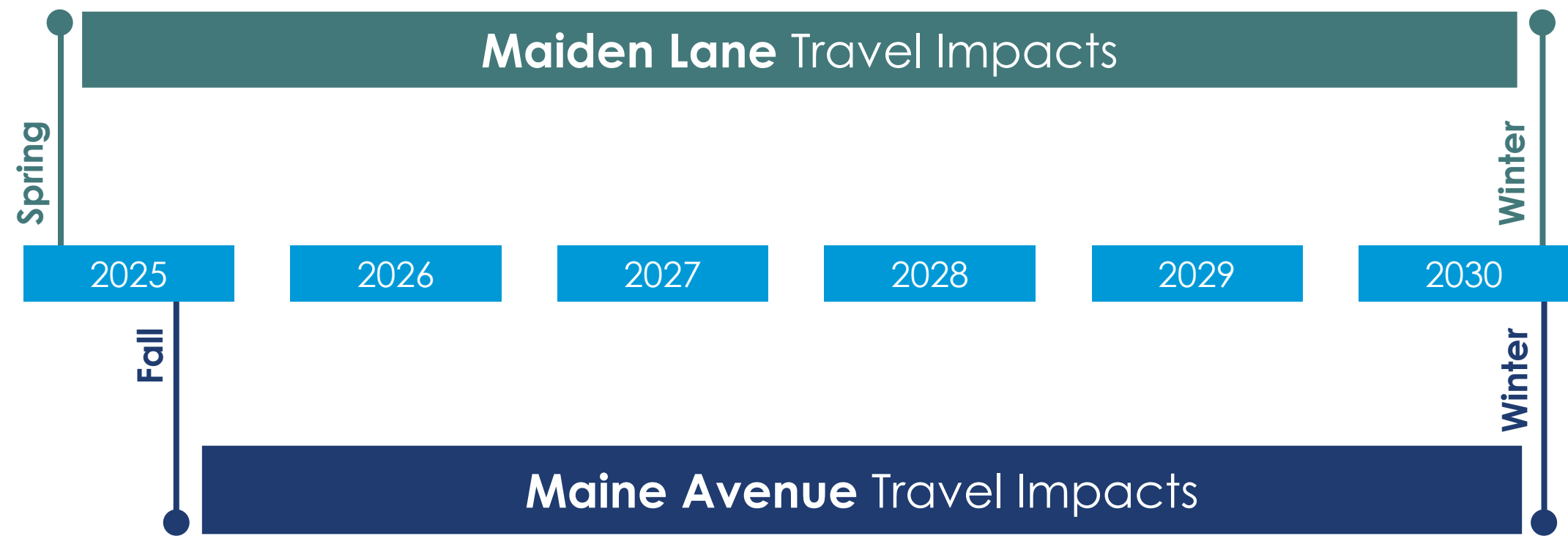


## Major Topics:

- Travel flow (auto, rail, bike, pedestrian, boat)
- Traffic analysis, lighting, signals
- Noise & vibration
- Structures (crashwalls, bridges, retaining walls)
- Roadway, drainage & landscaping
- Utilities
- Inspections & permits
- Adjacent projects and special events
- Public outreach

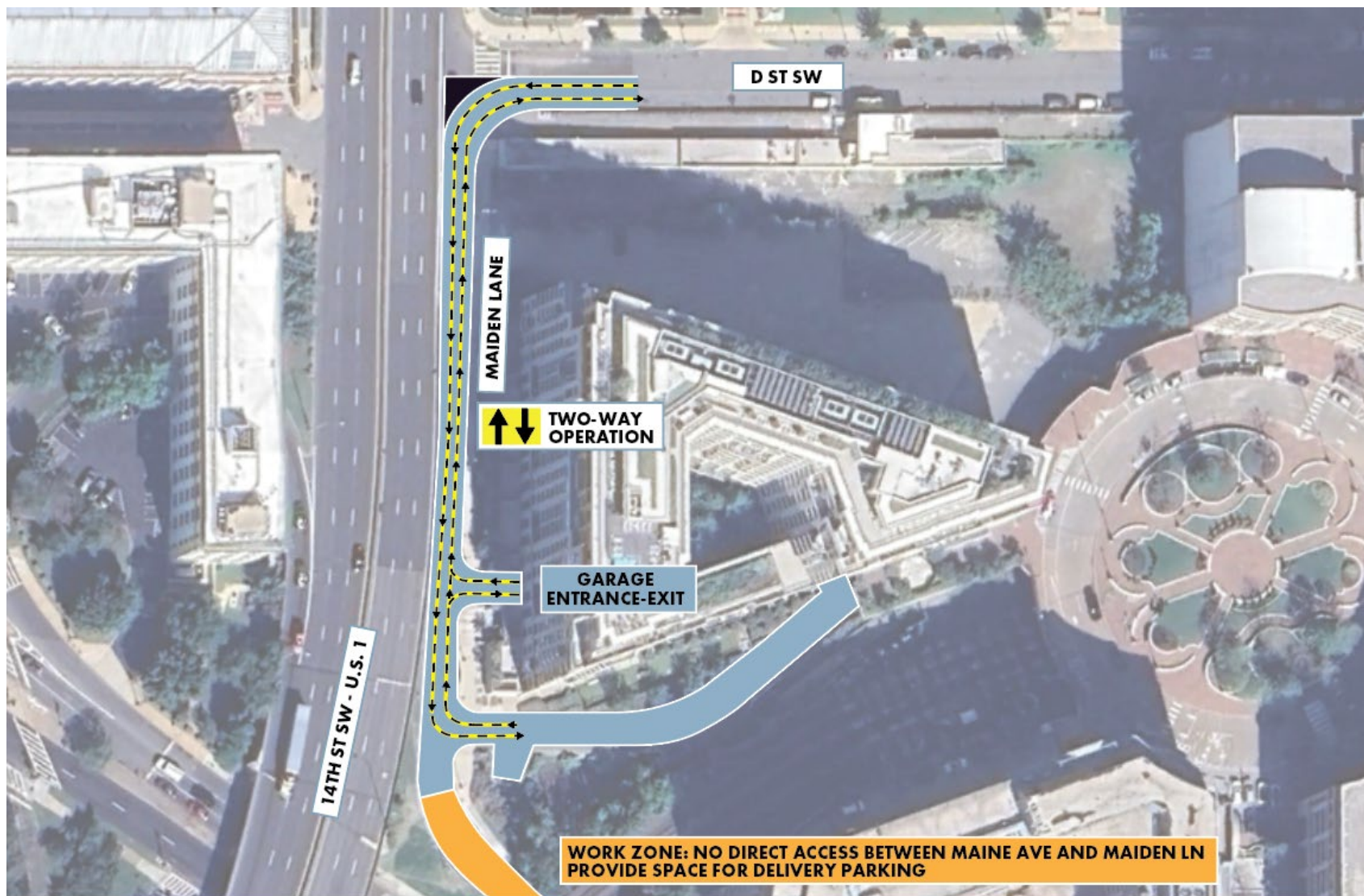


# Upcoming Construction Impacts



\*Schedule Subject to Change

# Maiden Lane Closure & Two-Way Operation



1. Close Maiden Lane  
(shown in orange)

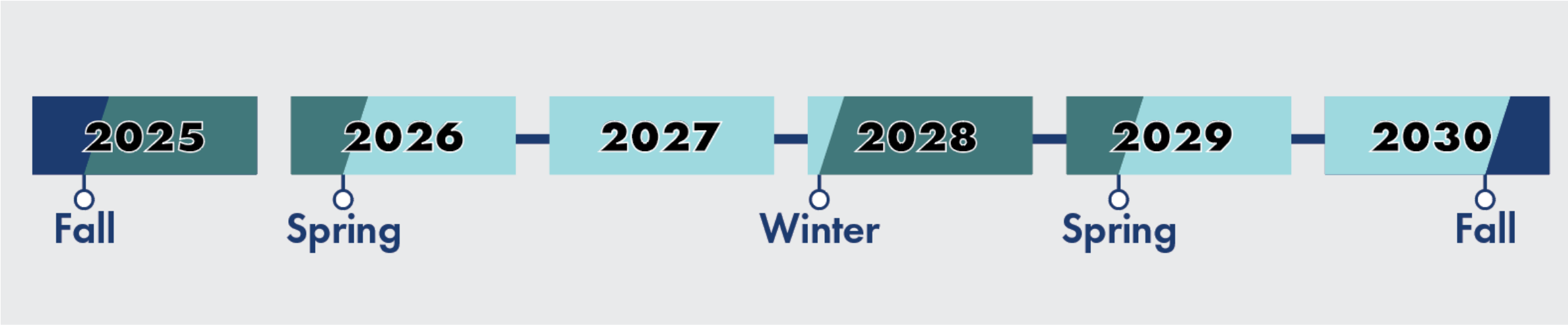
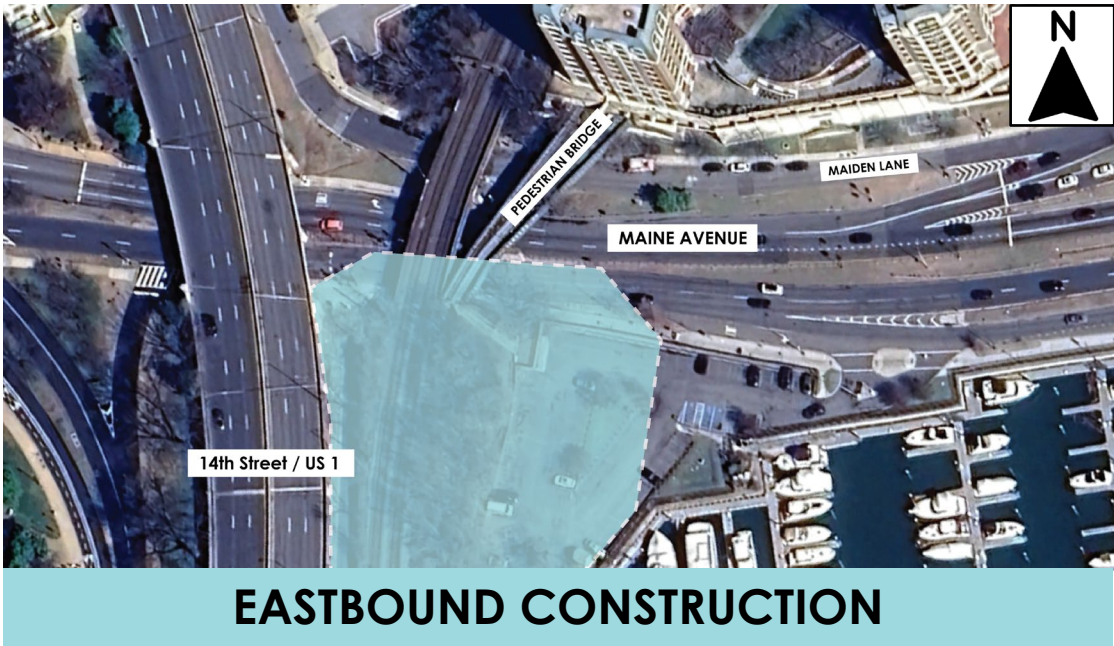
2. Change Maiden Lane  
to Two-Way Operation

- Access only from D St
- Essentially a **Private Access** with much less traffic volume
- Approx. 10 short-term, metered parking spots removed

➤ This plan will allow uninterrupted access to the garage and loading dock.



# Maine Avenue Construction Areas & Schedule



(\*subject to change)

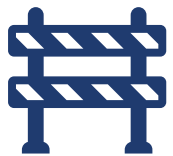
# Maiden Lane & Maine Avenue Travel Highlights



**Goal:** maintain **SAFE ACCESS** for motorists, bicyclists and pedestrians – Maine Ave, Hotel, Portals, Marina & Train Operations – while streamlining construction and minimizing impacts



Occasional **Nighttime Lane** Closures and **Weekend Detours**



- Maiden Lane Closed to Improve Safety
- 14<sup>th</sup> Street Ramp Closed for Periods



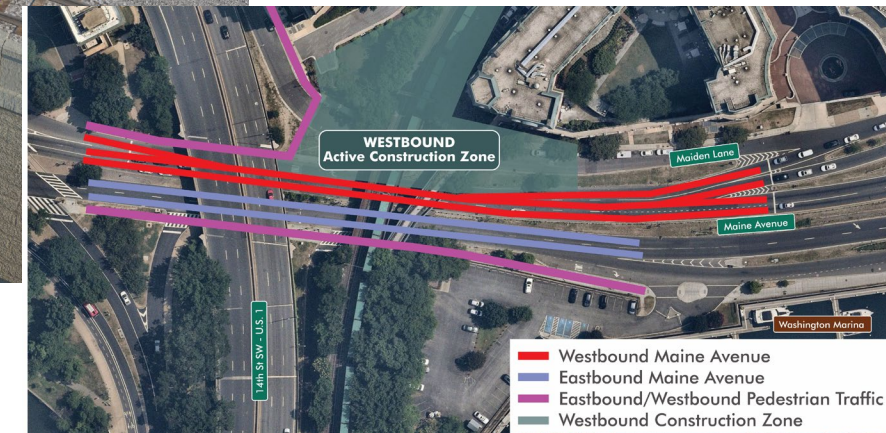
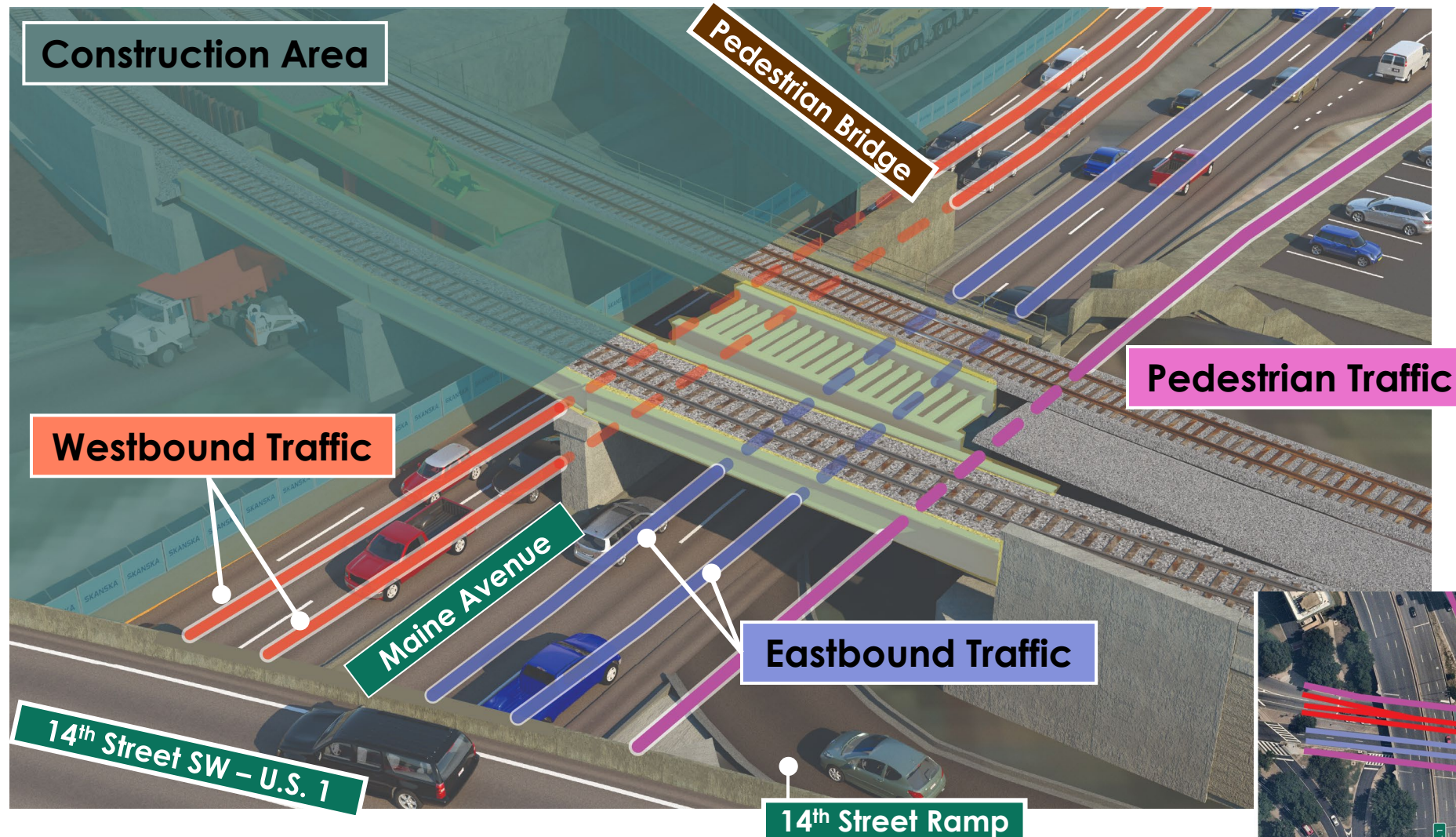
**Maine Ave Pedestrian Bridge Crossing Maintained at All Times**

- Requires a Temporary Pedestrian Bridge near Marina Entrance



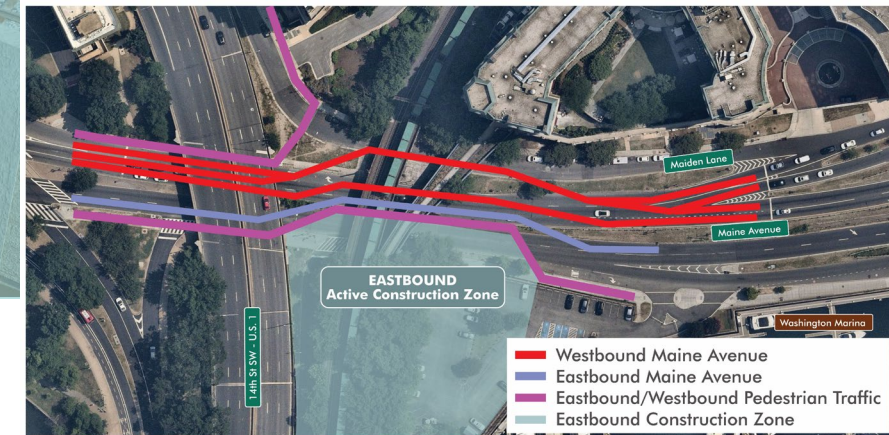
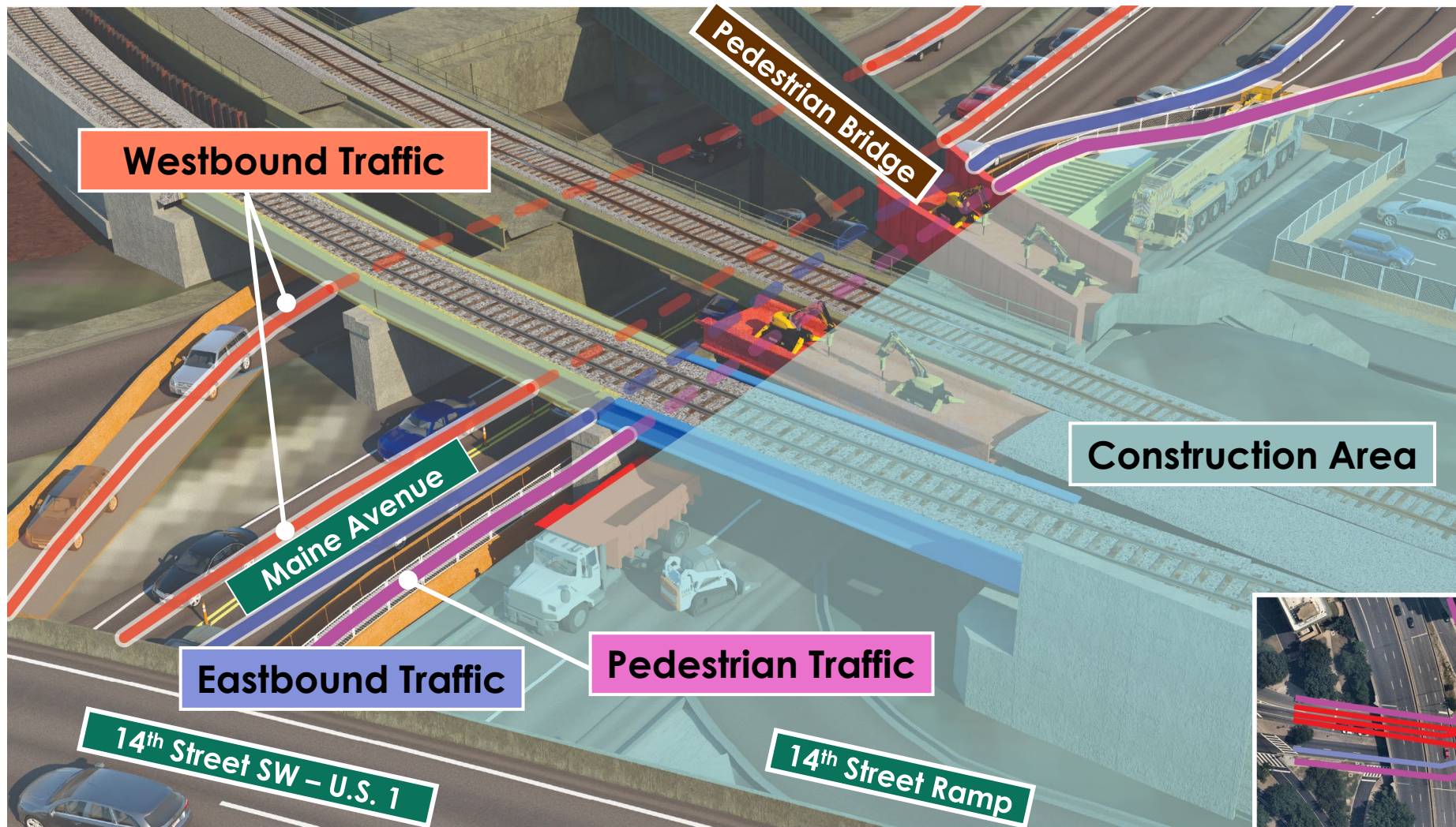


# Maine Ave – Westbound Construction Traffic Pattern



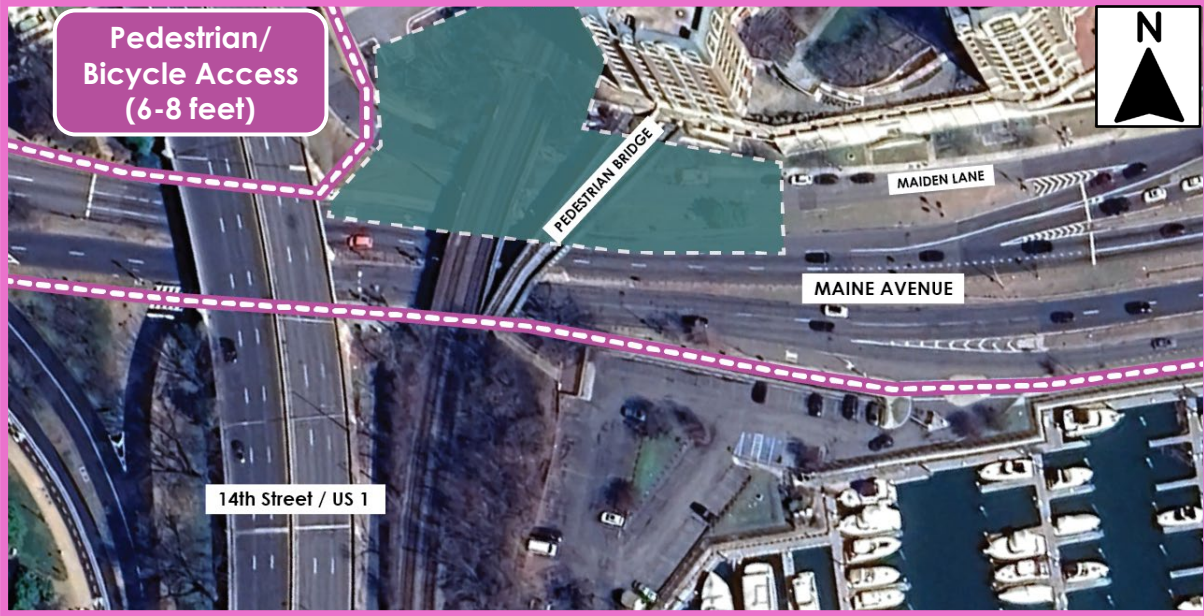


# Maine Ave – Eastbound Construction Traffic Pattern

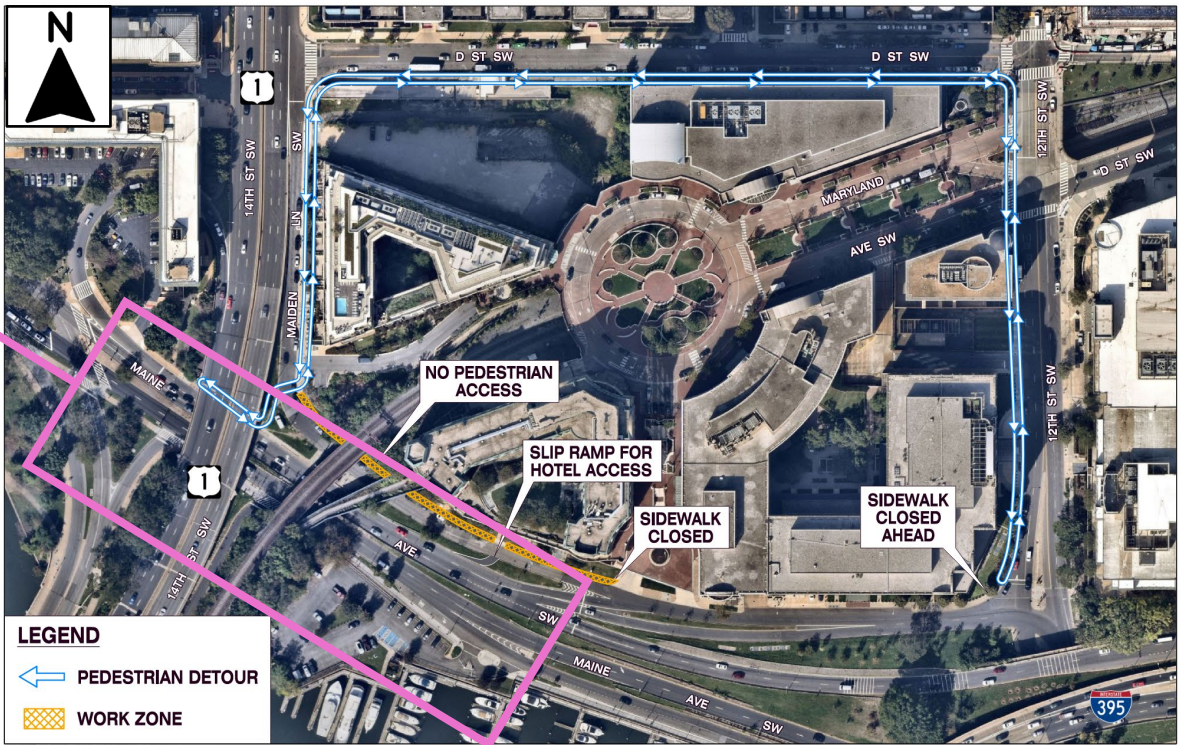




# Pedestrian/Bicycle Accessibility – Westbound Construction

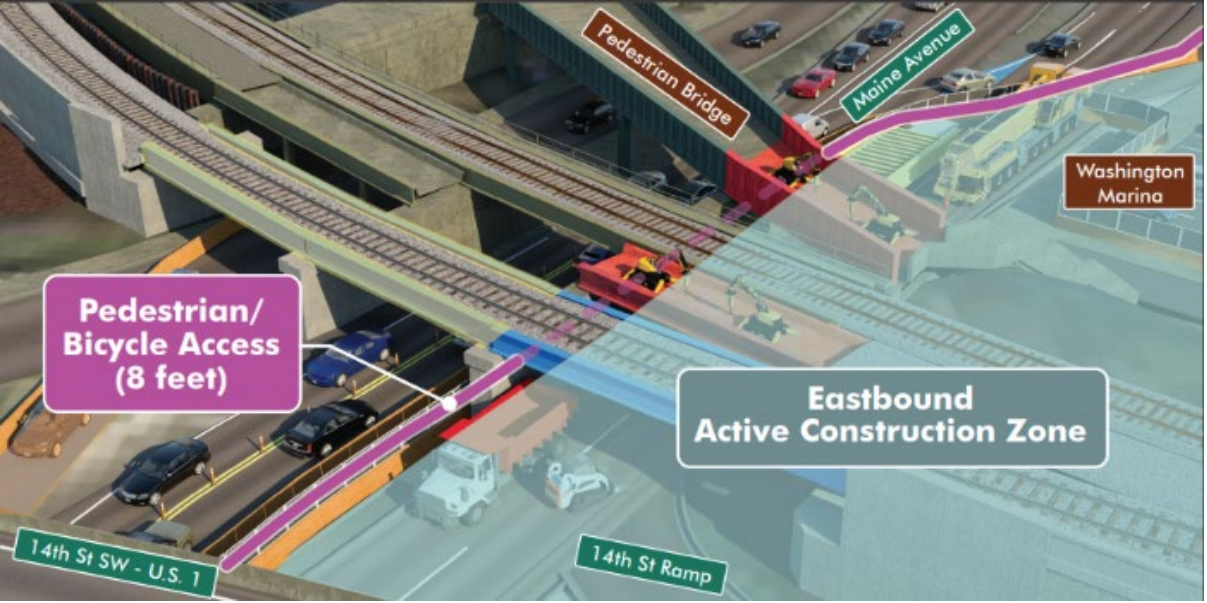
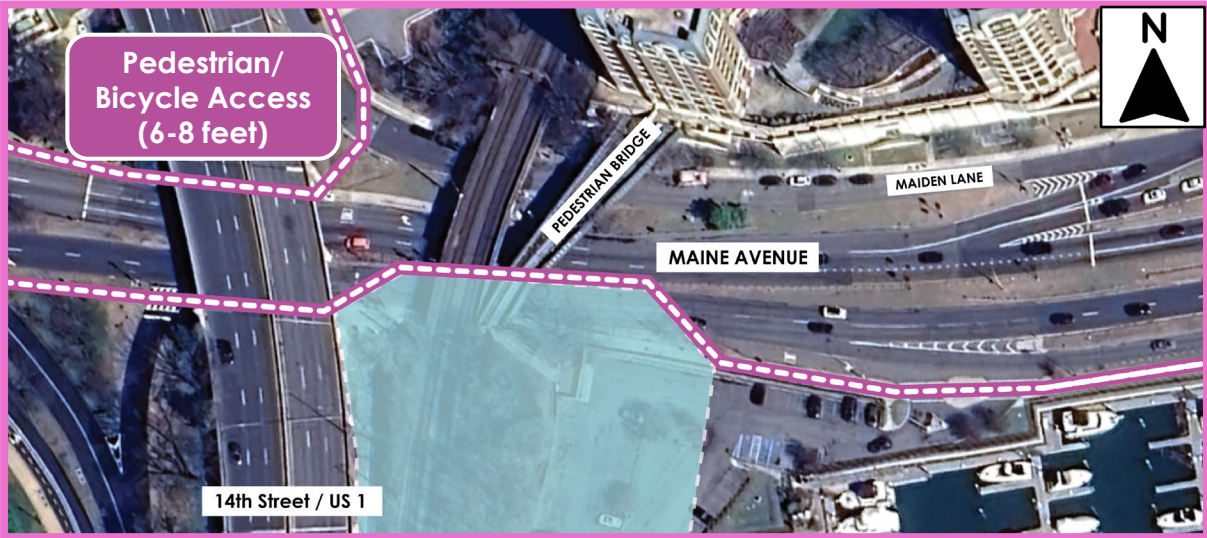


Northside Maine Avenue Full Pedestrian Detour

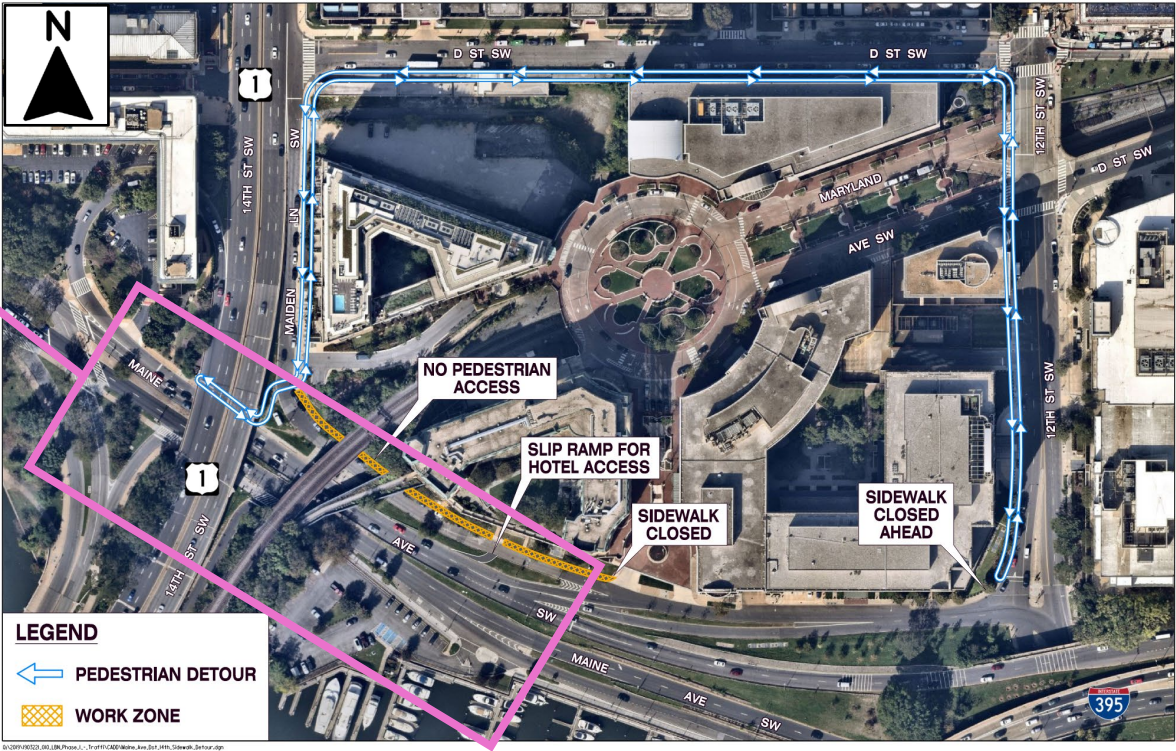




# Pedestrian/Bicycle Accessibility – Eastbound Construction



Northside Maine Avenue Full Pedestrian Detour





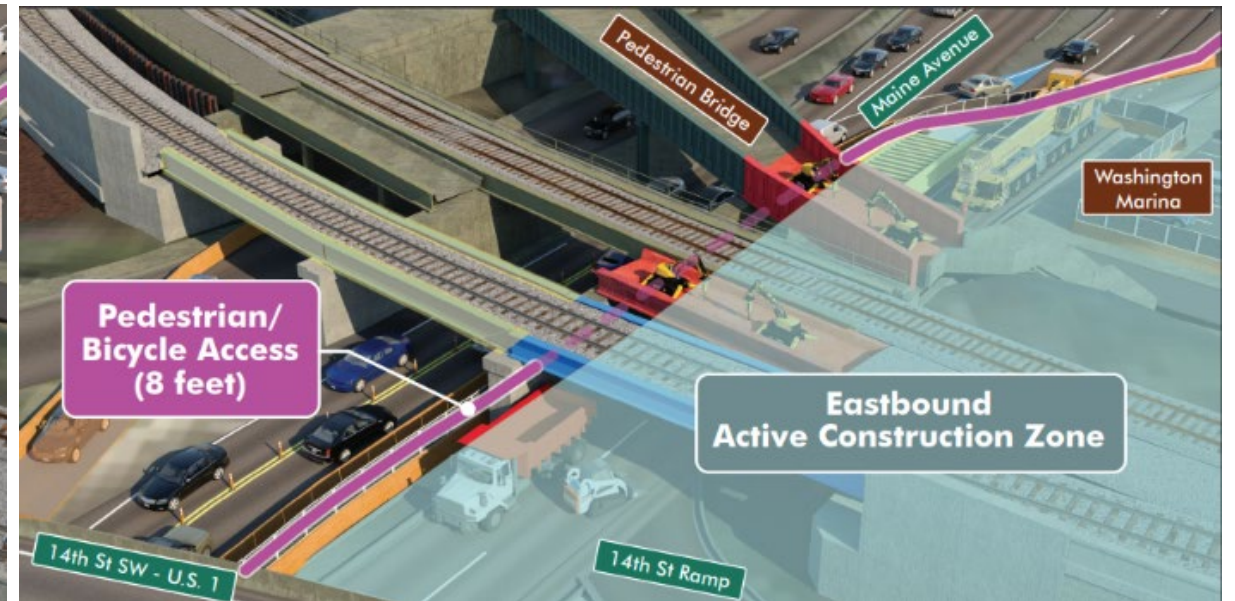
# Pedestrian/Bicycle Accessibility



Access will be 8 feet wide at all times

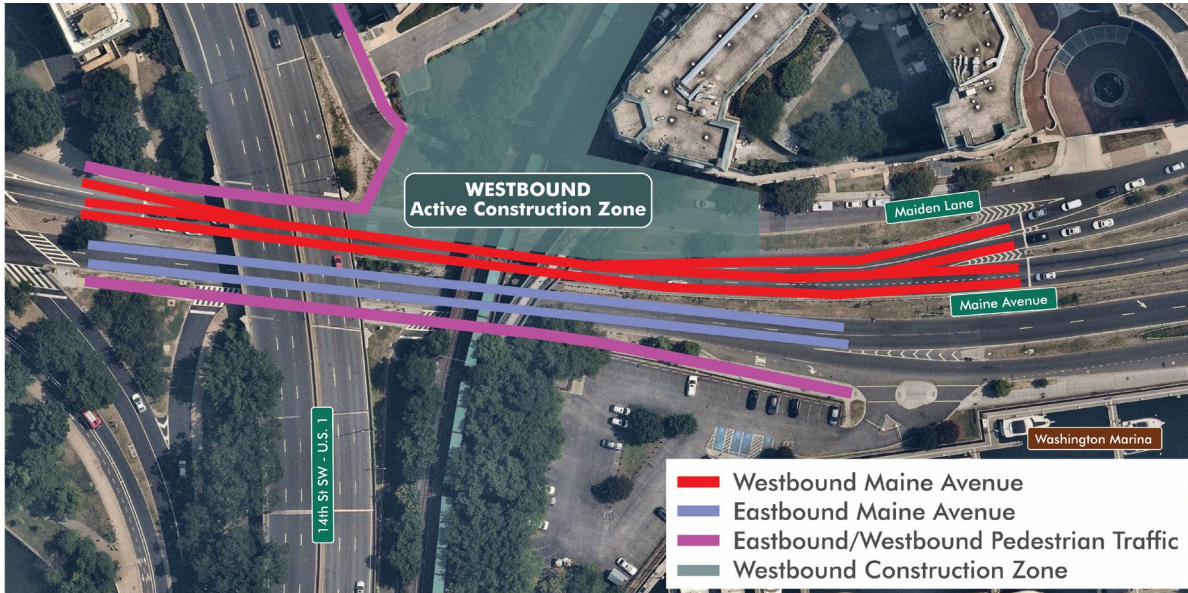


During Cherry Blossom season – Access will include two 8-foot-wide paths.



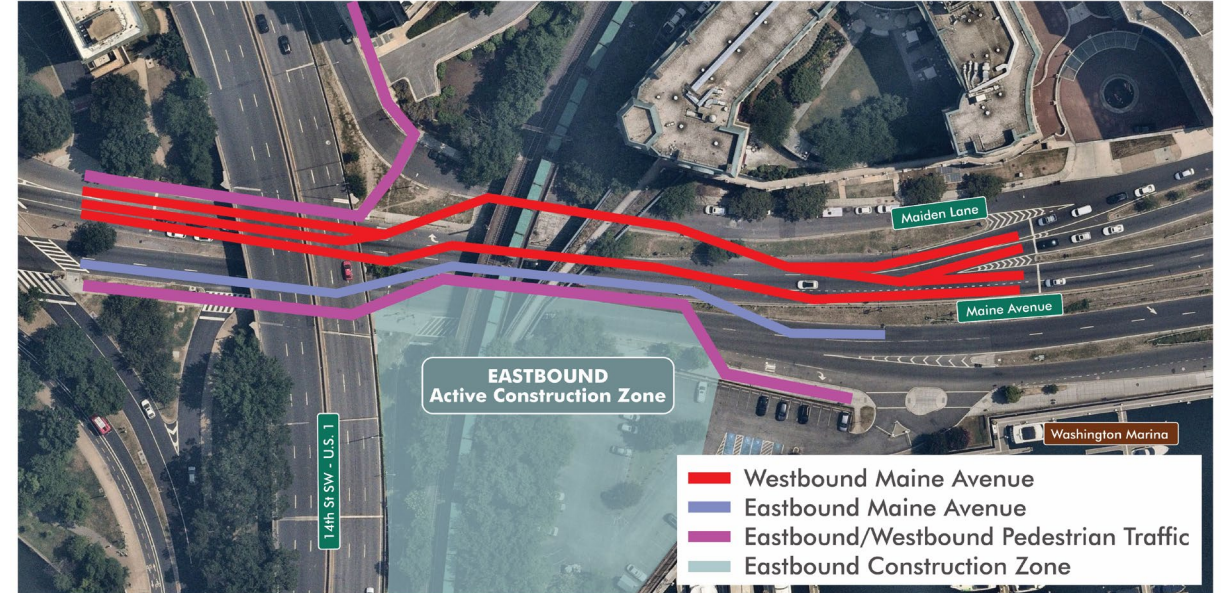


# Maine Avenue and Maiden Lane Travel Summary



## Westbound Construction

- Maintains two travel lanes in each direction.
- Maintains pedestrian walkway eastbound.



## Eastbound Construction

- Maintains two travel lanes for Westbound traffic.
- Maintains one travel lane for Eastbound traffic.
- Maintains pedestrian walkway eastbound.



# Work Zone Mitigation Measures

- Comprehensive Transportation Management Plan
- Close coordination with DDOT
- Traffic Incident Management Plan
- Monitor Traffic Operations & Safety
  - Work zone setups
  - Crashes
  - Queue lengths & travel times
  - Traffic data
- Proactive Public Outreach
- Adjacent Project & Special Event Meeting



LONG BRIDGE NORTH

Transportation Management Plan  
JMT JOB NO. 19-03221-001

Submitted to:

June 2024



# Minimizing and Mitigating Construction Disturbances

**The Long Bridge Team is aware that construction may cause community interference. We are committed to doing everything we can to minimize and mitigate those disturbances. For example:**



Adhere to the District's noise ordinance.



Use backup alarms that regulate volume based on ambient conditions.



Make every effort to limit night work for both noise and safety reasons.



Monitor vibration to ensure structural integrity of adjacent buildings.



Regularly monitor noise levels to ensure we stay within established limits.



Employ drilling equipment (versus pile driving) to the maximum potential.



Utilize "whisper quiet" generators with lower decibel levels.



# Boating Community Travel Impacts

## Potomac River

- **May:** Geotechnical borings in the river.
- **Summer 2025:** Test piles in the river.

**The navigation channel will remain open throughout construction.**

- Primary navigational channel may shift for short periods.
- Minor encroachments to navigation channel.
- No Wake Zone.
- Buoys to guide marine traffic.

## Washington Channel

- No spring/summer work planned

**Washington Marina and parking lot will remain operational during construction.**

- Buoys to guide marine traffic.
- The entire Washington Channel as a No Wake Zone.



# How to Stay Up To Date



**Announcements on Long Bridge website:**  
[www.LongBridgeProject.com](http://www.LongBridgeProject.com)



**E-mail subscriber notices (Sign up to receive)**  
[info@longbridgeproject.com](mailto:info@longbridgeproject.com)

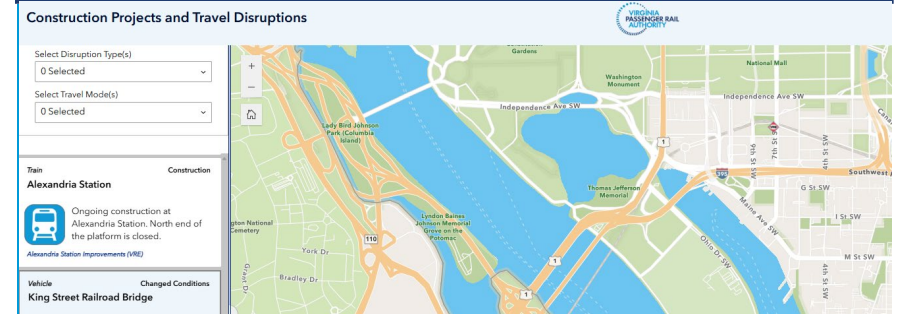


**VPRA Social Media Posts**  
Facebook, Instagram, X, LinkedIn, YouTube

## Portable Message Signs On-Site



## VPRA Construction Disruptions Map



## DDOT and NPS Traffic Advisories

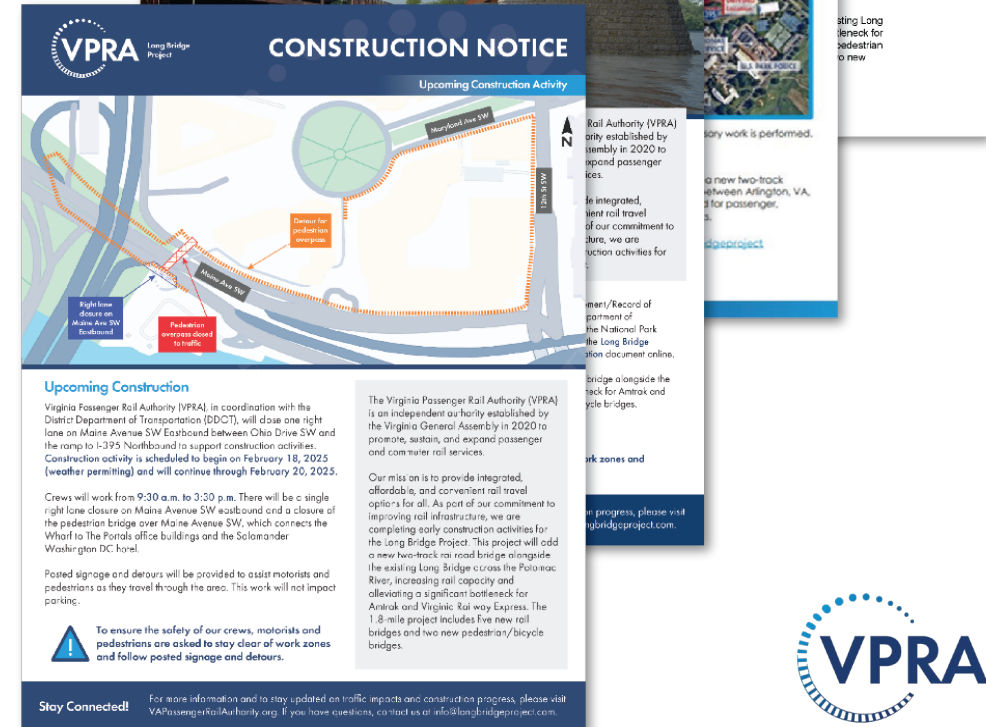
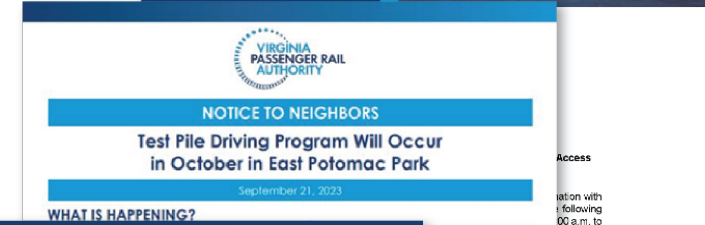
## Press Releases to Major Outlets





# Keeping the community informed

- Community Meetings and Events
- Door to Door Outreach
- Community Advisory Group (CAG)
- Traffic, Boating, and Ped/Bike Advisories
- Signage
- Website, social media, hotline



# How to stay connected



**Visit project website:**  
[www.LongBridgeProject.com](http://www.LongBridgeProject.com)



**Sign up for email updates:**  
[info@longbridgeproject.com](mailto:info@longbridgeproject.com)



**Contact us:**  
(202) 769-1808

**Like**

**Share**

**Follow**



**@VAPassengerRail**



**@vapassengerrail**



**@vapassengerrail**



**virginia-passenger-rail-authority**



**@virginiapassengerrailauthority**





## Questions & Next Steps