



Long Bridge and Alexandria Fourth Track Projects

June 3, 2025

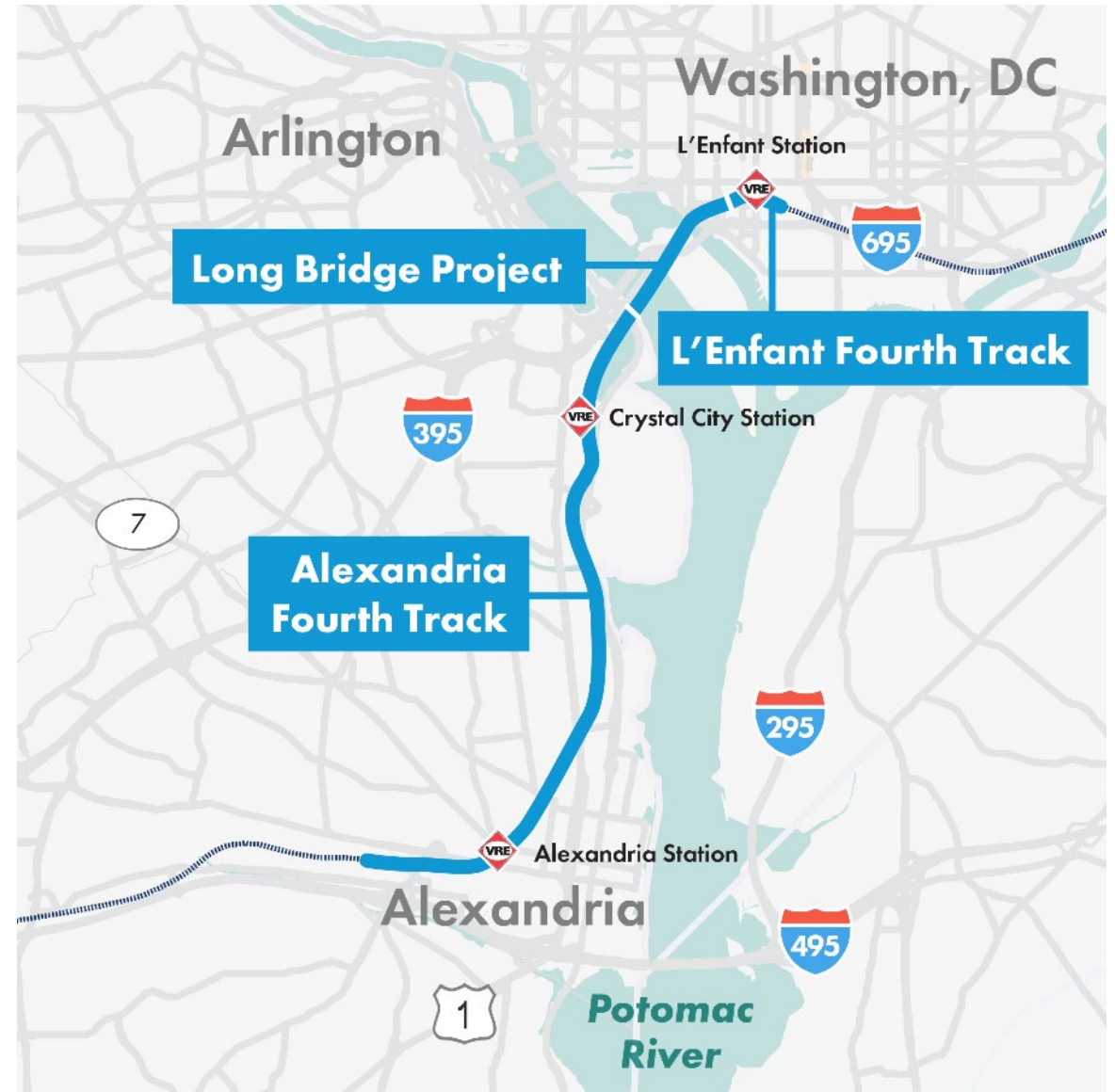
Arlington and Alexandria

Community Advisory Group Meeting #1



Agenda

1. Welcome
2. VPRA Overview
3. Long Bridge Project
4. Alexandria Fourth Track Project
5. Crystal City Station Improvements
6. King and Commonwealth Replacement Rail Bridges
7. Q&A



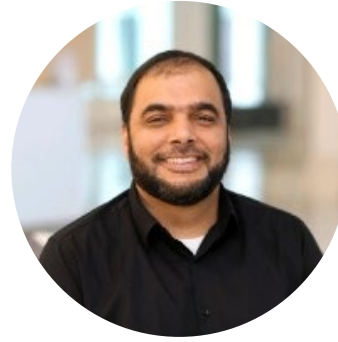
Presenters



Meredith Judy
VPRA, Community
Affairs Manager



Shirlene Cleveland
VPRA, Senior Director
Long Bridge Project



Adeel Mysorewala
VPRA, Project Manager,
Alexandria Fourth Track



Jason Bortz
VRE, Project Manager
Design and Construction



Naomi Klein
VPRA, Planning Manager



Ian Langan
VPRA, Project Manager
Long Bridge Project



Geoff Pelletier
VPRA, Senior Director



Mark Schnauffer
VPRA, Engineering Project
Manager

Community Advisory Group (CAG)

- Sounding board for community questions, concerns, and impacts.
- Represent the diverse interests in Northern VA
 - Residents
 - Business owners
 - Property manager
 - Boaters
 - Special interest groups (e.g., bike advocacy)
 - NoVA agencies
 - Elected officials
 - Other key stakeholders
- Quarterly meetings (more often, as needed)
- Virtual Meetings
- Site walks/tours



Virginia Passenger Rail Authority (VPRA) Overview

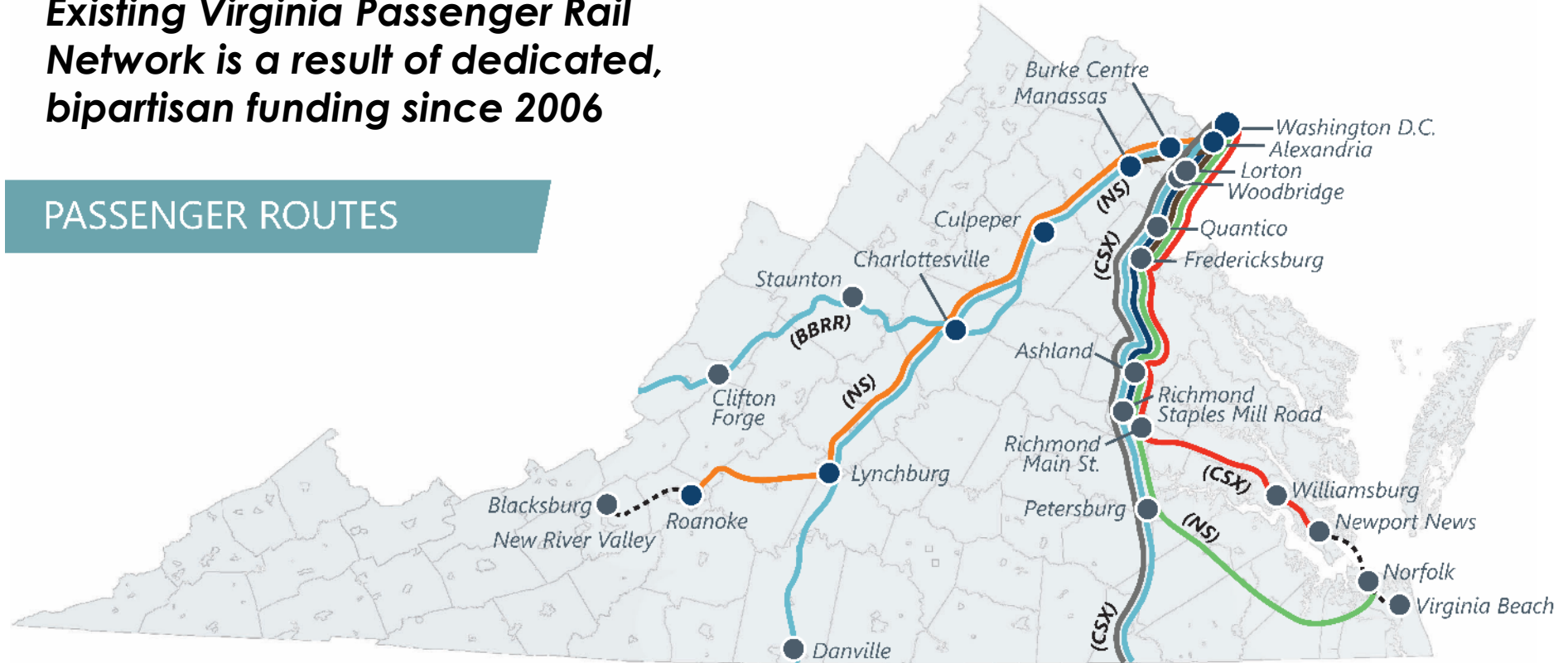
- Created in 2020 by the General Assembly
- Responsible for expanding and promoting passenger and commuter rail
 - Manages passenger rail in Virginia
 - Designs, builds, finances, and maintains rail facilities
- Partners with Amtrak, Norfolk Southern, CSX Transportation (CSXT), and Virginia Railway Express (VRE) to operate passenger and commuter rail service



Virginia Passenger Rail Network 2025

Existing Virginia Passenger Rail Network is a result of dedicated, bipartisan funding since 2006

PASSENGER ROUTES



Virginia State-Supported Services

- Washington-Roanoke (Route 46)
- Washington-Newport News (Route 47)
- Washington-Norfolk (Route 50)
- Washington-Richmond (Route 51)

Host Railroads

- CSX - CSX Transportation
- NS - Norfolk Southern
- BBRR - Buckingham Branch
- Passenger Station

Other Services

- Other Amtrak State-Supported
- Amtrak Long-Distance
- VRE Commuter Rail
- Thruway Bus

Four State-Supported Amtrak Routes:

8 daily roundtrips

- Roanoke: 2
- Richmond: 1
- Newport News: 2
- Norfolk: 3

Five Amtrak Long-Distance Roundtrips

One NC State-Supported Roundtrip

Two Virginia Railway Express (VRE) Commuter Routes:

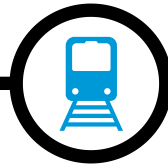
16 daily roundtrips

- Manassas: 8
- Fredericksburg: 8

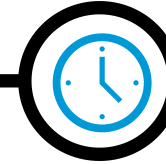
Transforming Rail in Virginia Program Benefits



Increase **capacity** to accommodate more passenger rail service



Improve **efficiency** of passenger, commuter, and freight rail services by reducing the bottleneck along the existing corridor

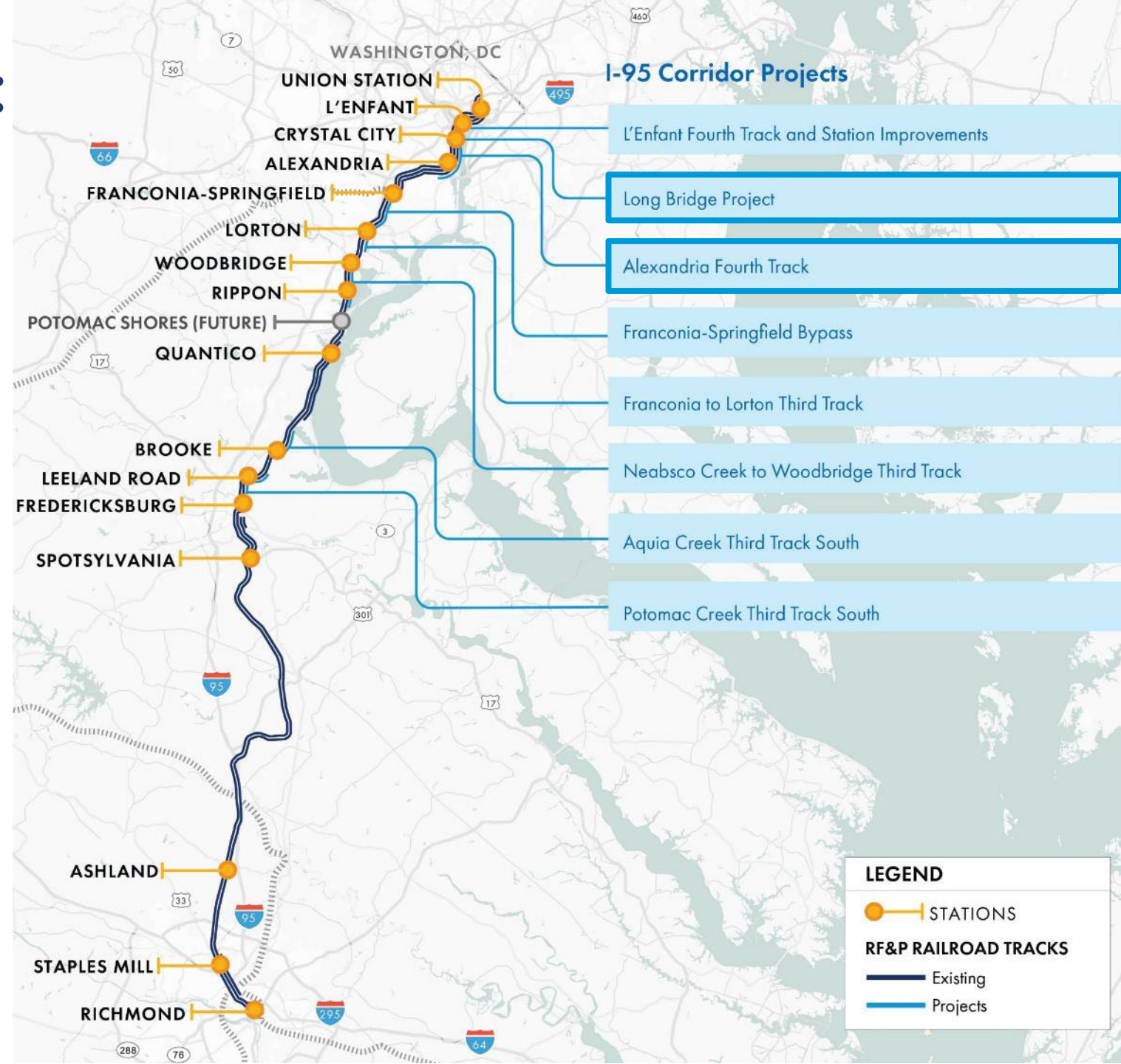


Improve **reliability** of passenger, commuter, and freight rail services

VPRA Capital Program: DC to Richmond

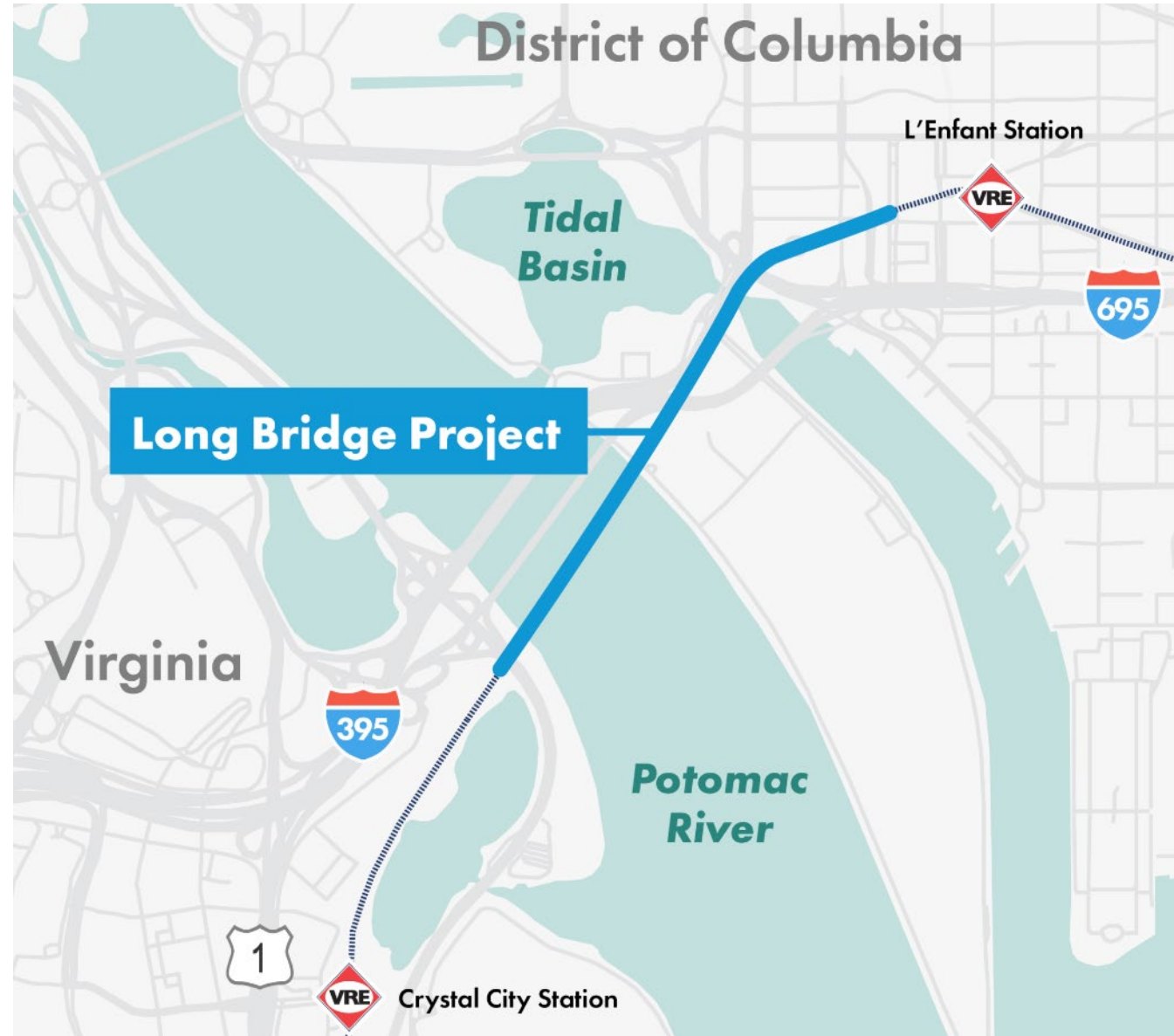
11 projects unlock new passenger rail service and set the stage for future service expansion.

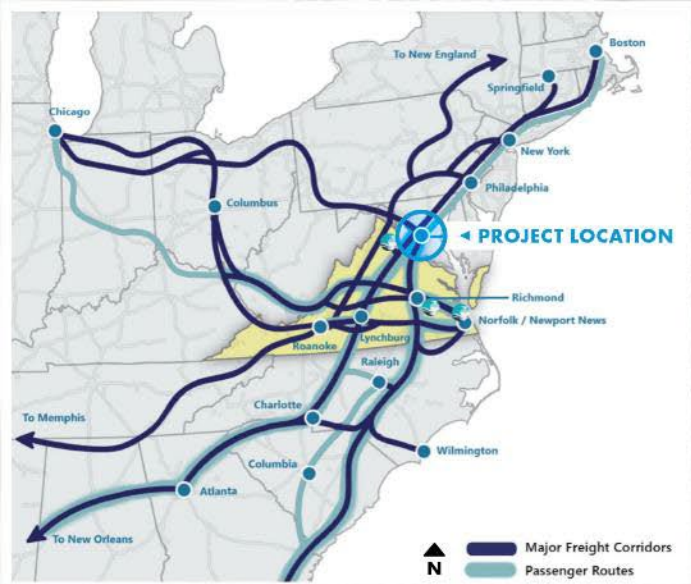
- **Two new Amtrak** and **three new VRE roundtrips** (including late night & weekend service).
- **Future capacity** for an **additional three new Amtrak roundtrips** and **two additional VRE**.



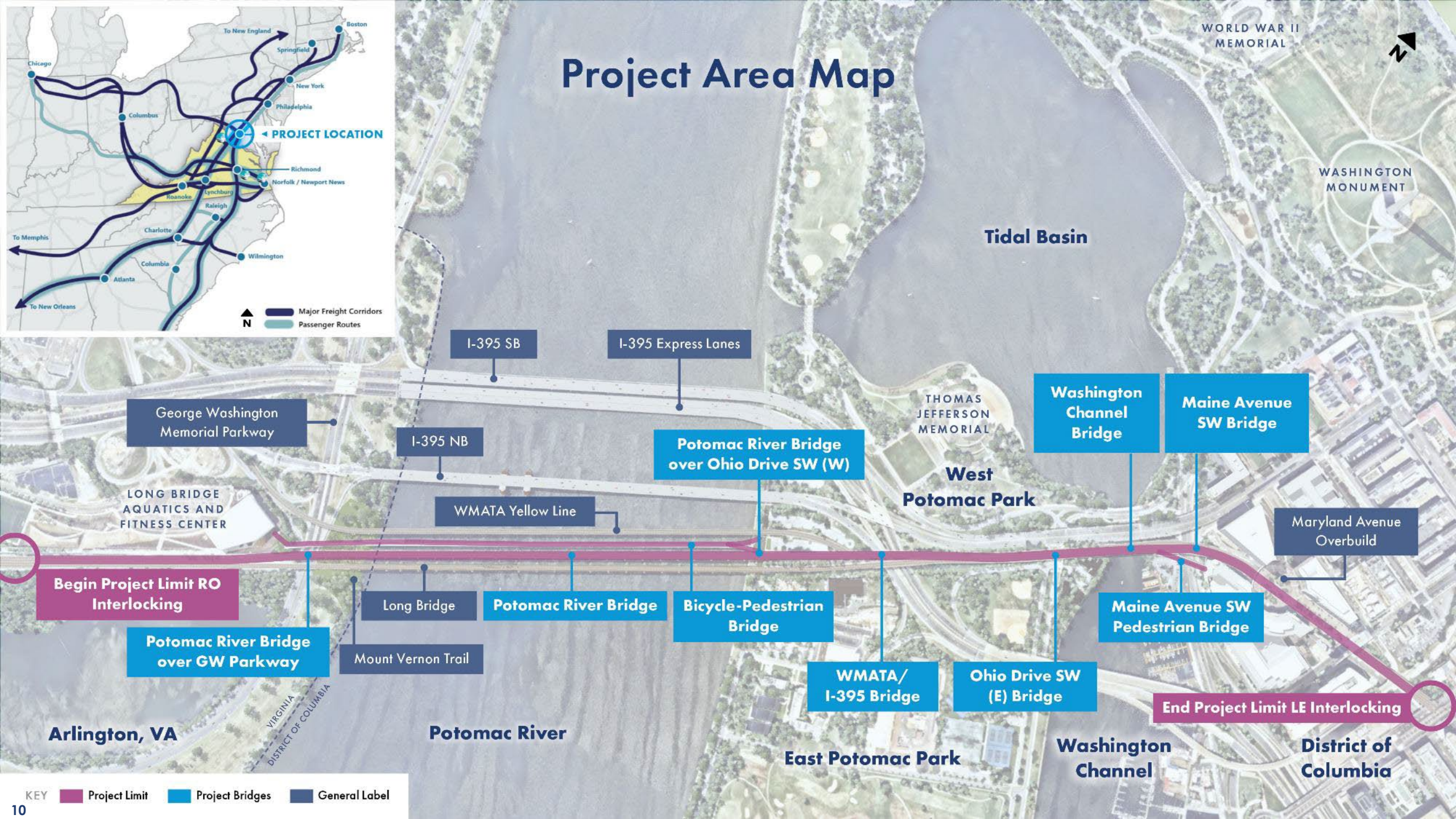
Long Bridge Project Overview

- The existing two-track rail bridge is owned and operated by CSXT and operates at 98% capacity with nearly 80 CSXT, Amtrak, and VRE trains crossing daily
- The existing bridge will remain and continue to be owned/operated by CSXT
- The new Long Bridge will add two additional tracks, doubling rail capacity
- The 1.8-mile project corridor includes five rail bridges and two pedestrian bridges





Project Area Map



Project Overview



1.8 mile
Project

20,000
Feet of Track

6,500 ft
Rail Bridges

3
Rail Operators

2,800 ft
Potomac River Bike
-Pedestrian Bridge

2
New Tracks
VA to DC

3,500 ft
Retaining/
Crashwalls

5
New Rail
Bridges

70
Daily
Trains

1
New Potomac River
Bike/Ped Bridge

37 +
Stakeholders

1
Maine Ave Pedestrian Bridge



North and South Packages



- 1 A New Two Track Bridge Over the Potomac River
- 2 A New Bicycle Pedestrian Bridge Over the Potomac River
- 3 A New Two Track Bridge Over I-395

- 4 A New Four Track Bridge Over Ohio Drive SW
- 5 A New Four Track Bridge Over the Washington Channel

- 6 A New Four Track Bridge Over Maine Avenue SW
- 7 A New Pedestrian Bridge Over Maine Avenue SW

South Package

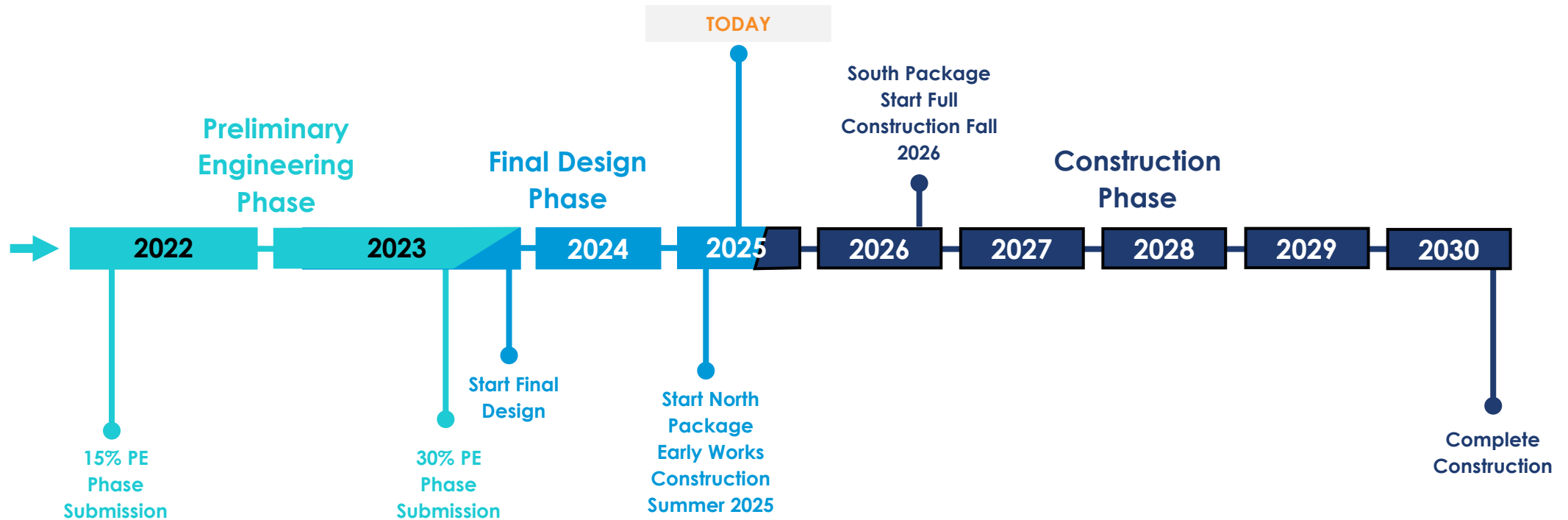
- Constructs a rail bridge and bike/ped bridge over the George Washington Memorial Parkway & Potomac River
- Design-build contract
- Construction estimated to begin mid-2026

North Package

- Constructs new bridges in the District north of the Potomac River, as well as retaining walls, embankments, ground improvements & crash walls
- Progressive design-build contract
- Early works construction packages to begin Spring/ Summer 2025

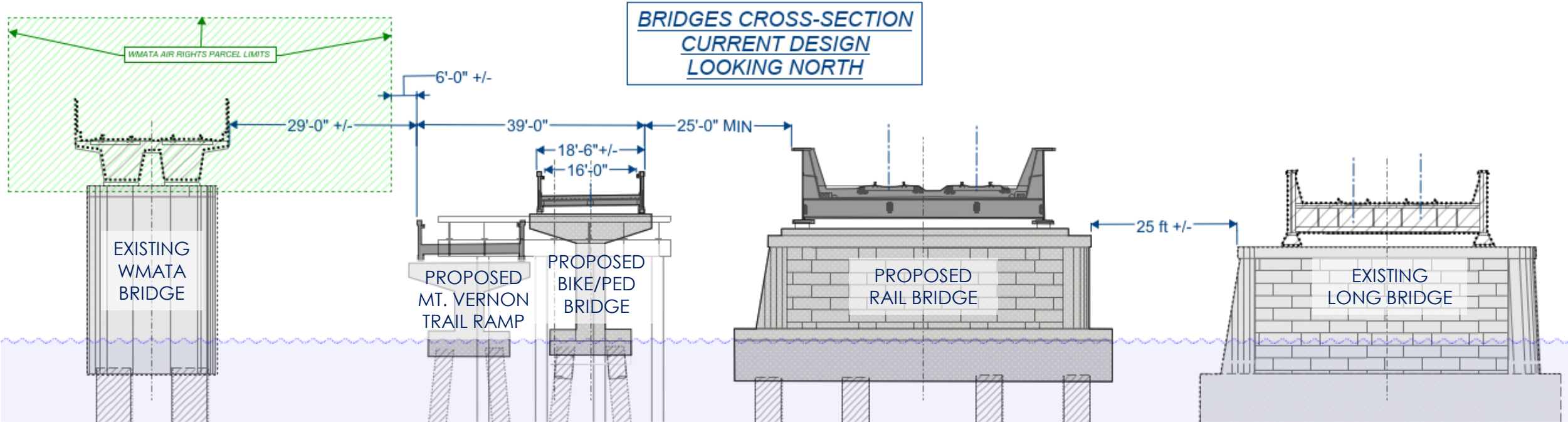
Design & Construction Timeline

Combined North and South Packages



Bridge Alignments

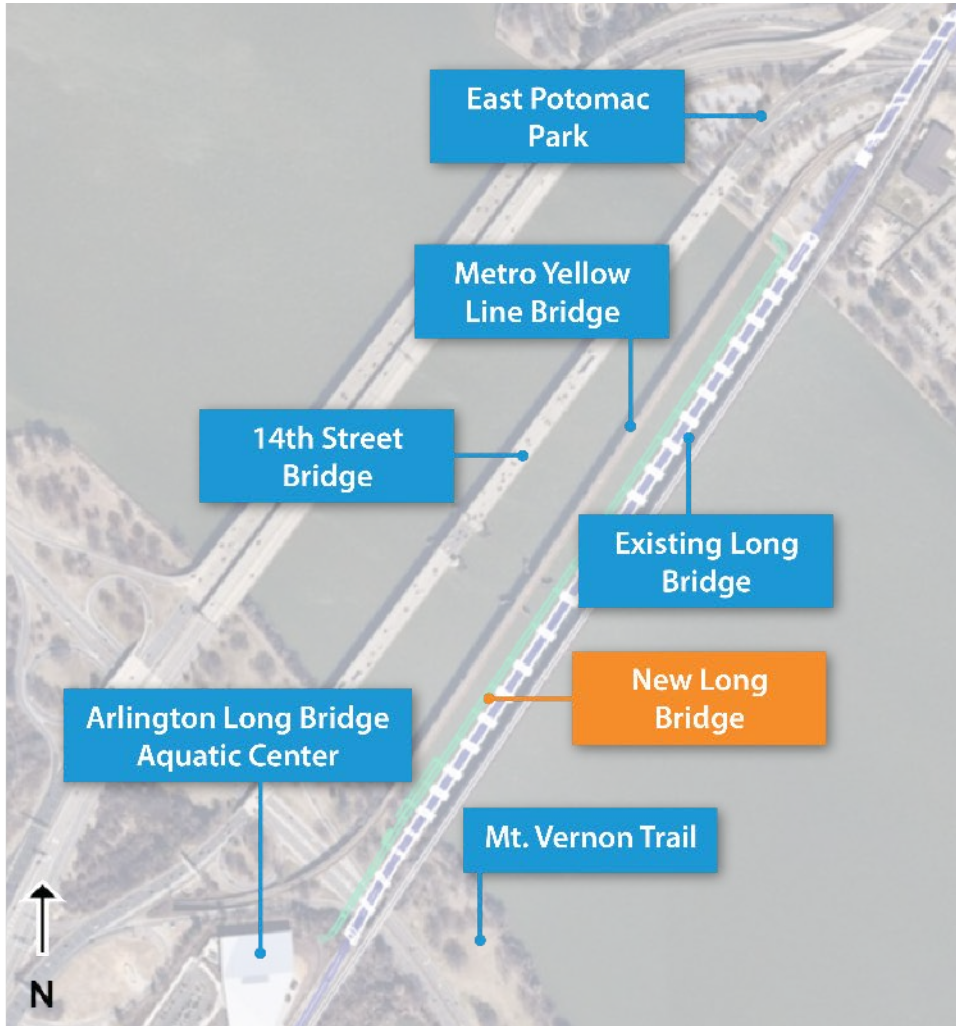
Looking from Arlington, Toward DC



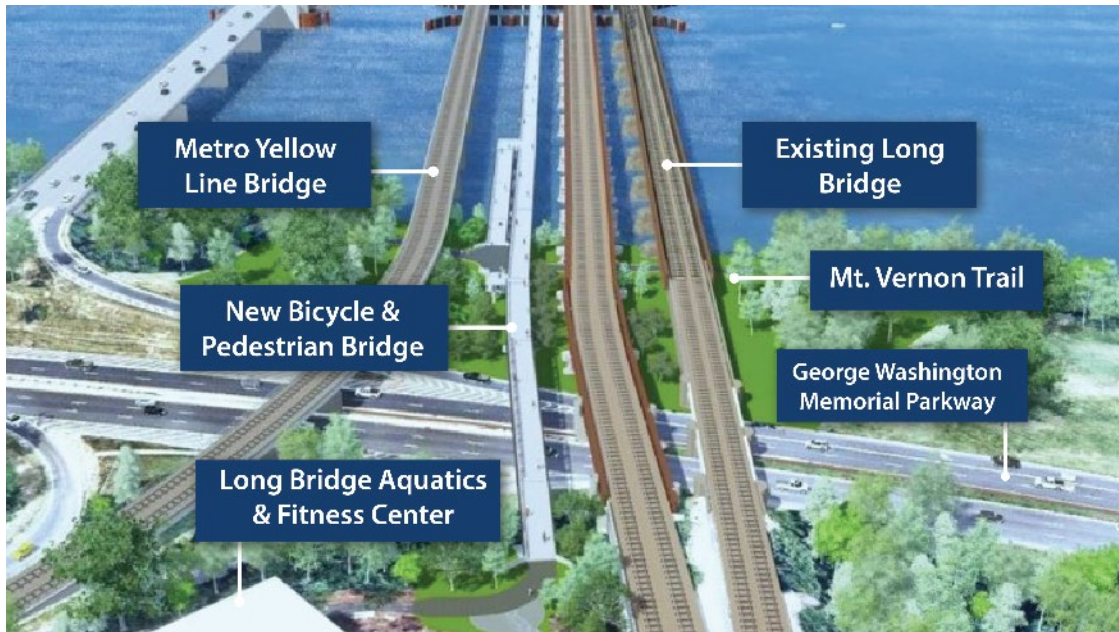
Space Constraints:

- 25 foot minimum between structures to ensure safety, security, and to allow for future bridge maintenance.
- Avoid WMATA pile foundations and air rights.

Potomac River Bridge



Potomac River Bike/Pedestrian Bridge



- New recreational connection between Mt. Vernon Trail and East Potomac Park
- DC to own and maintain
- More than double the width of the current bike-pedestrian path
- Existing 14th Street Bridge Bike-Ped Path will remain

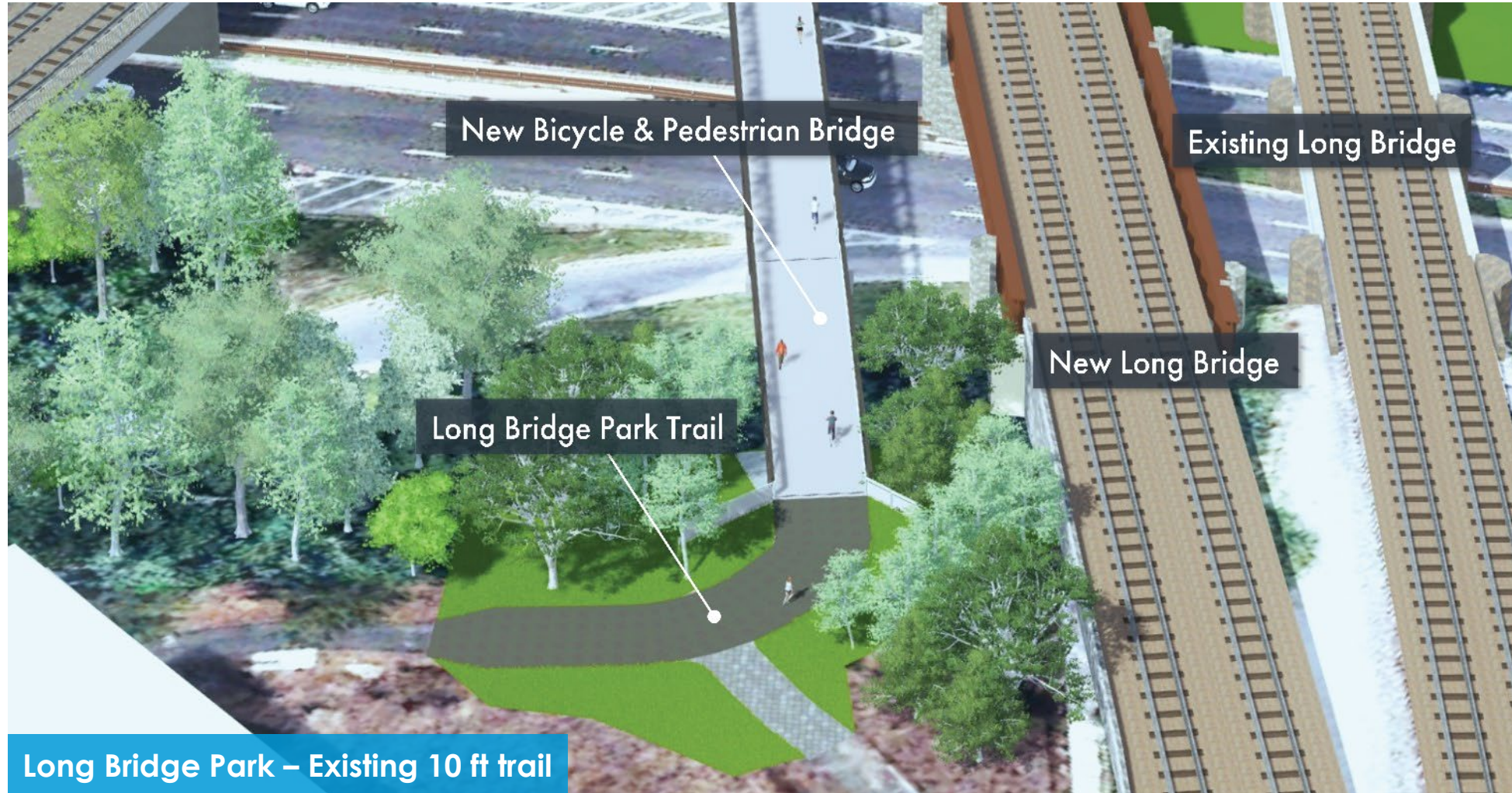


Existing Bicycle-Pedestrian Network

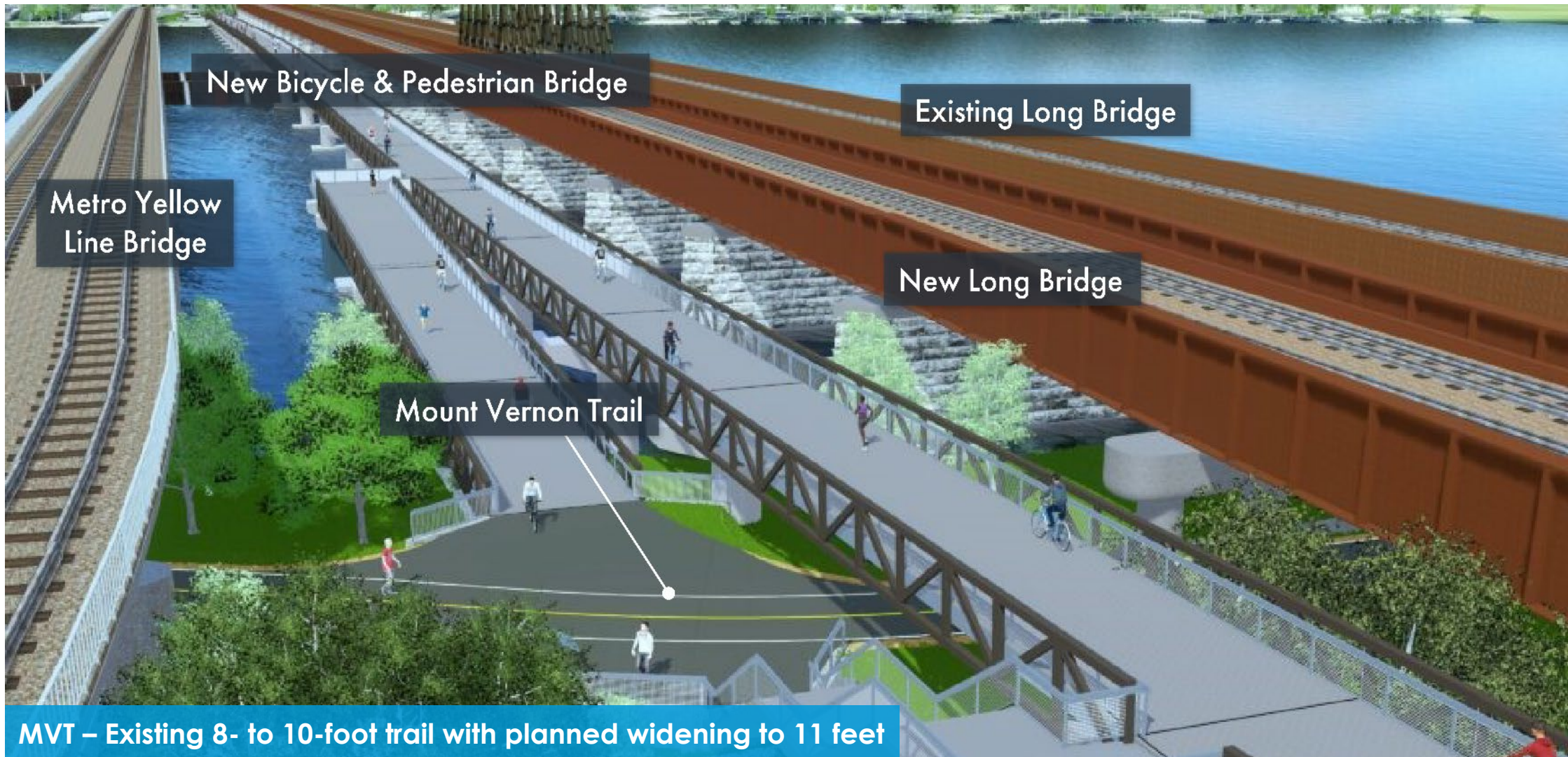


Connection Designs

Long Bridge Park, Arlington



Mount Vernon Trail, Arlington, VA

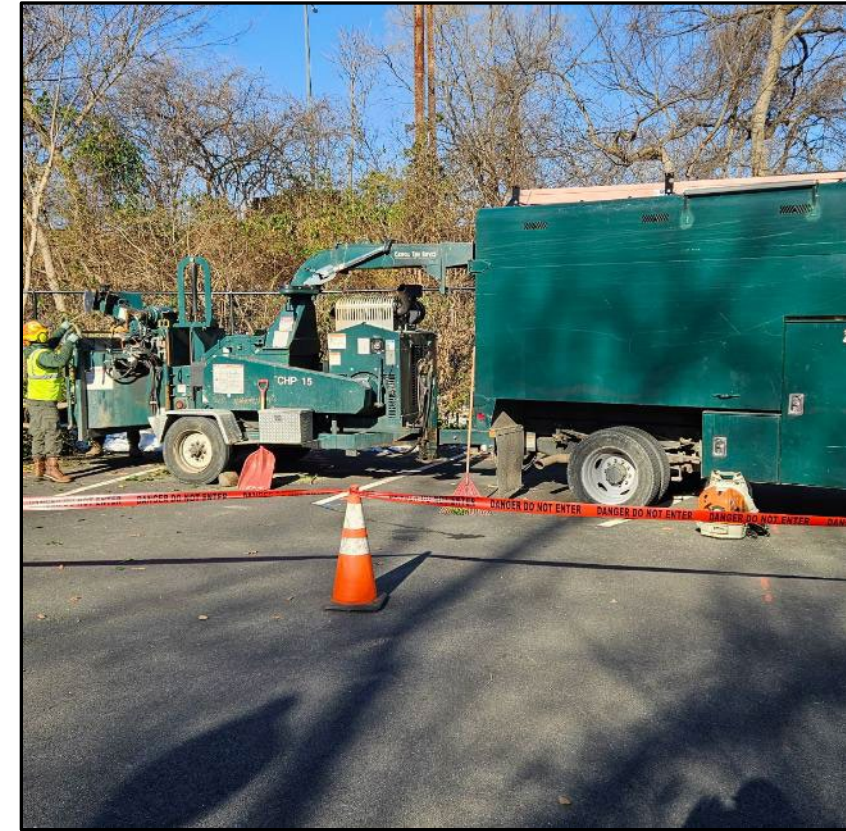


View from Long Bridge Park: New Rail and Bicycle/Pedestrian Bridges

What is Happening 2025?

Pre-Construction Activities

- Borings
- Test piles
- Tree and brush clearing
- Maintenance of Traffic Plans (auto, pedestrian, bike, boat)



Boating Community Travel Impacts

Potomac River

- **May:** Geotechnical borings in the river
- **Summer 2025:** Test piles in the river

The navigation channel will remain open throughout construction

- Primary navigational channel may shift for short periods
- Minor encroachments to navigation channel.
- No Wake Zone
- Buoys to guide marine traffic

Washington Channel

- No spring/summer work planned

Washington Marina and parking lot will remain operational during construction

- Buoys to guide marine traffic
- The entire Washington Channel as a No Wake Zone



Long Bridge Stakeholder Coordination

Stakeholders (monthly/weekly meetings):

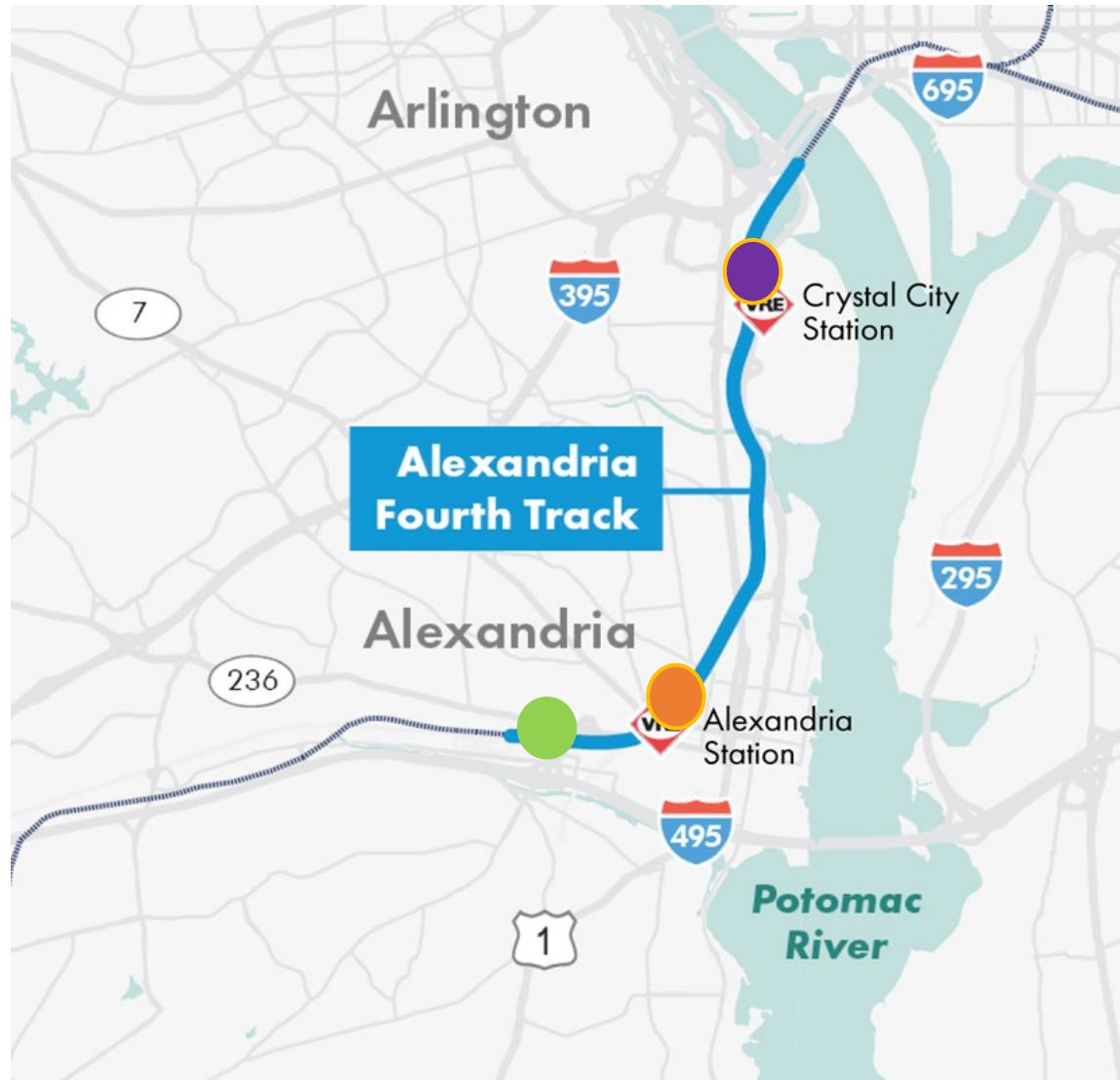
- CSXT, Virginia Railway Express (VRE), Amtrak
- Virginia Department of Transportation (VDOT)
- District Department of Transportation (DDOT)
- Arlington and Alexandria
- National Park Service (NPS)
- Adjacent Property Owners



Major Topics:

- Travel flow (auto, rail, bike, pedestrian, boat)
- Traffic analysis, lighting, signals
- Noise & vibration
- Structures (crashwalls, bridges, retaining walls)
- Roadway, drainage & landscaping
- Utilities
- Inspections & permits
- Adjacent projects and special events
- Public outreach

Alexandria Fourth Track Project



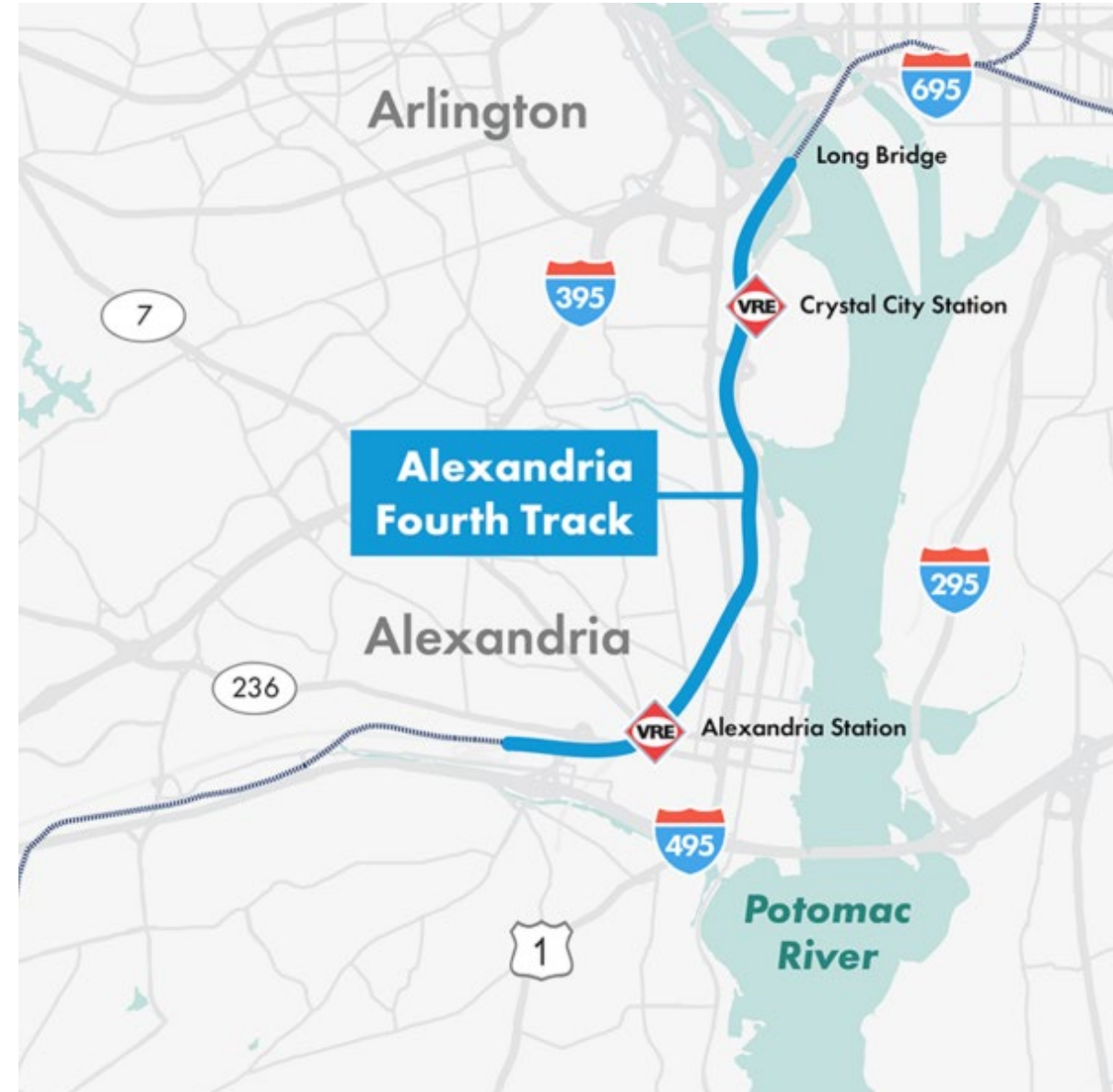
Six miles of 4th track from Long Bridge Park to Business Center Drive area

Related sub projects:

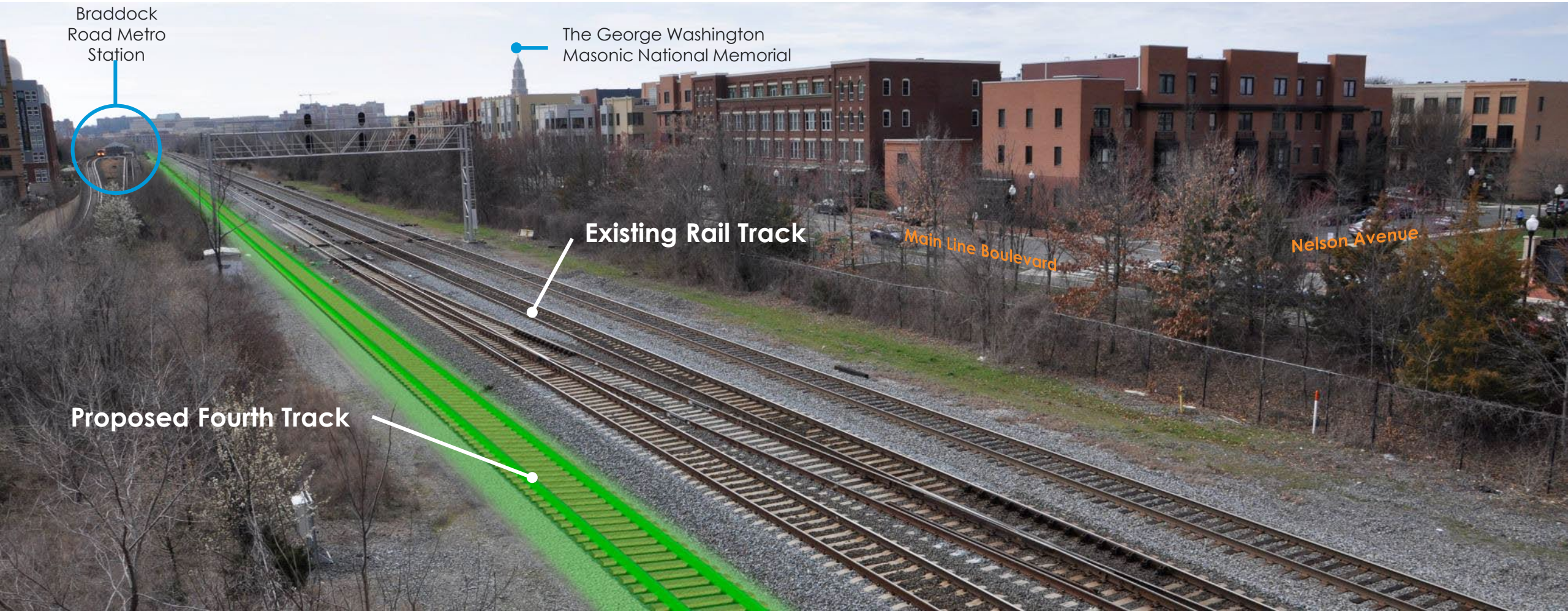
- Crystal City Station
- King Street area projects
 - Alexandria Station
 - King and Commonwealth Bridges
 - City Streetscape Improvements (Planning Stage)
- Telegraph Tunnel
 - Pedestrian mitigation improvements

Alexandria Fourth Track Overview

- Approximately six miles of new track between Long Bridge and Alexandria VRE Station
- Adds a fourth track within existing right-of-way between Arlington and Alexandria
- Increases rail capacity and addresses current bottleneck that delays passenger and freight trains traveling north into DC, where five tracks converge into three
- Construction to begin Q4 2025



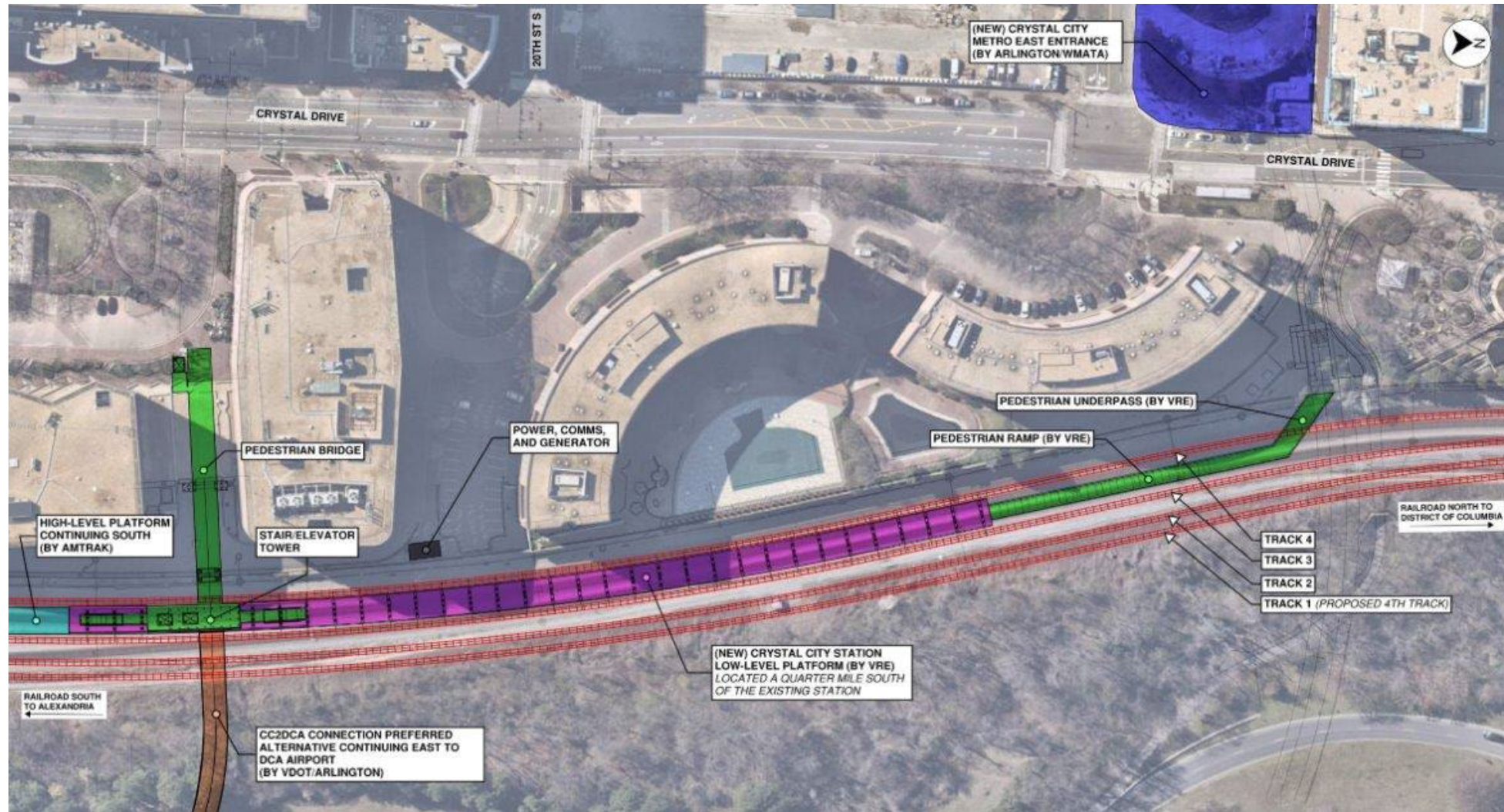
New Fourth Mainline Track (looking south from Rt. 1 bridge)



Alexandria Fourth Track – Project Timeline



Crystal City Station Project Overview



Crystal City Station Improvements

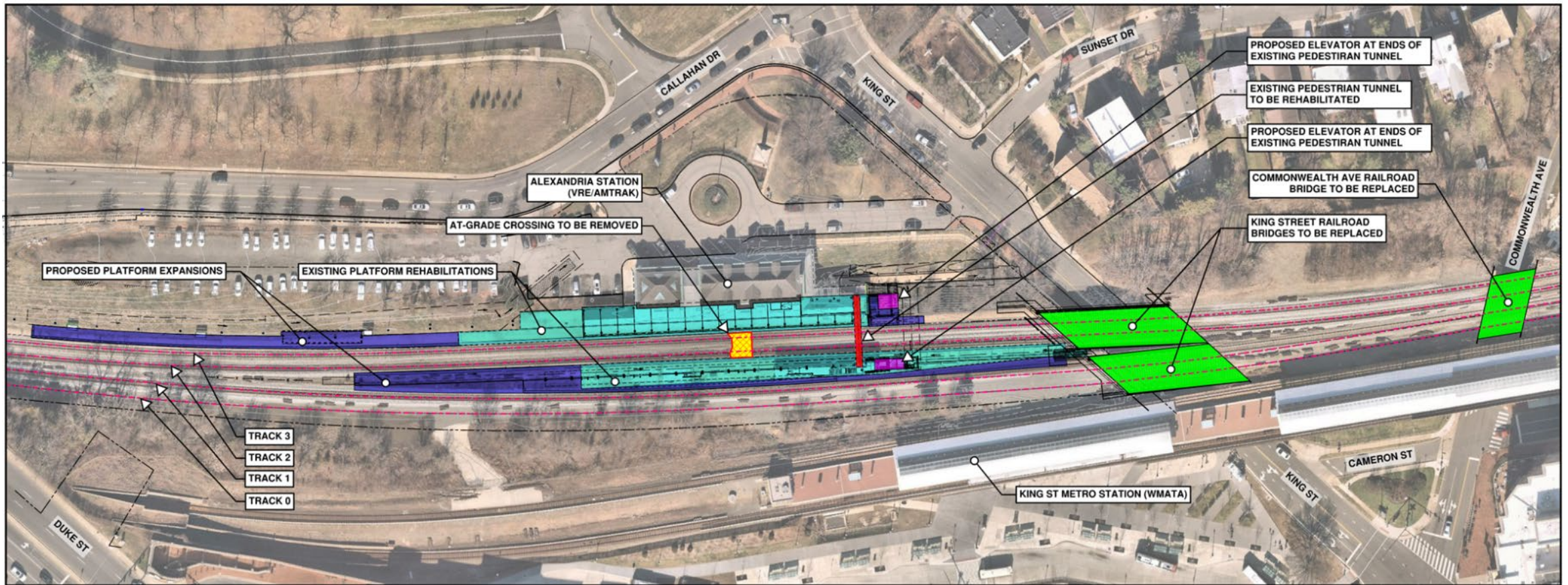
- Station with island platform to accommodate 8-car train sets
 - Island platform will enable simultaneous boarding and improve operational flexibility
 - Longer platforms allow all train car doors to open, improving operational efficiency
- Entrances provide enhanced intermodal transit connectivity
 - North entrance reduces distance to new Metro entrance and Mt Vernon Trail Connector
 - South entrance accommodates future pedestrian/bicycle connection between the station and airport



Crystal City Station Improvements Timeline

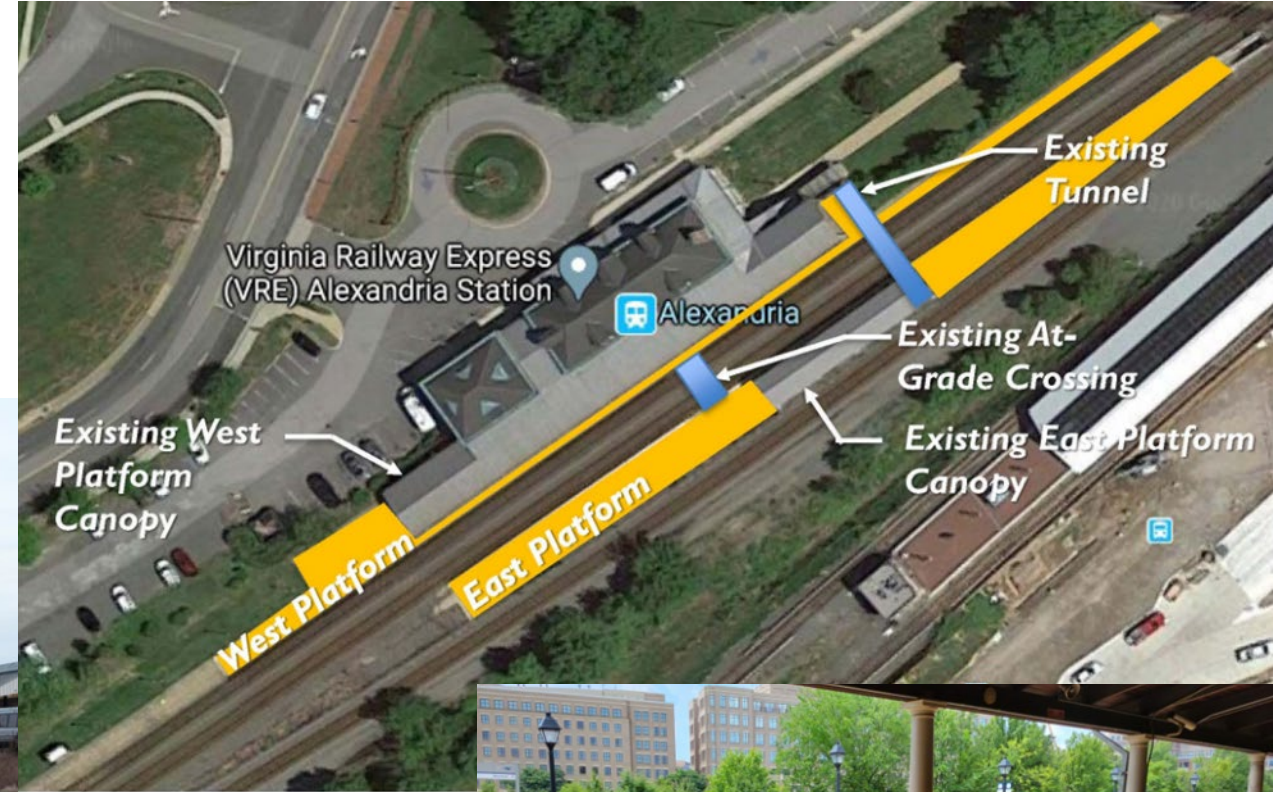


Alexandria Station and King Street and Commonwealth Avenue Bridge Replacement Project Overview



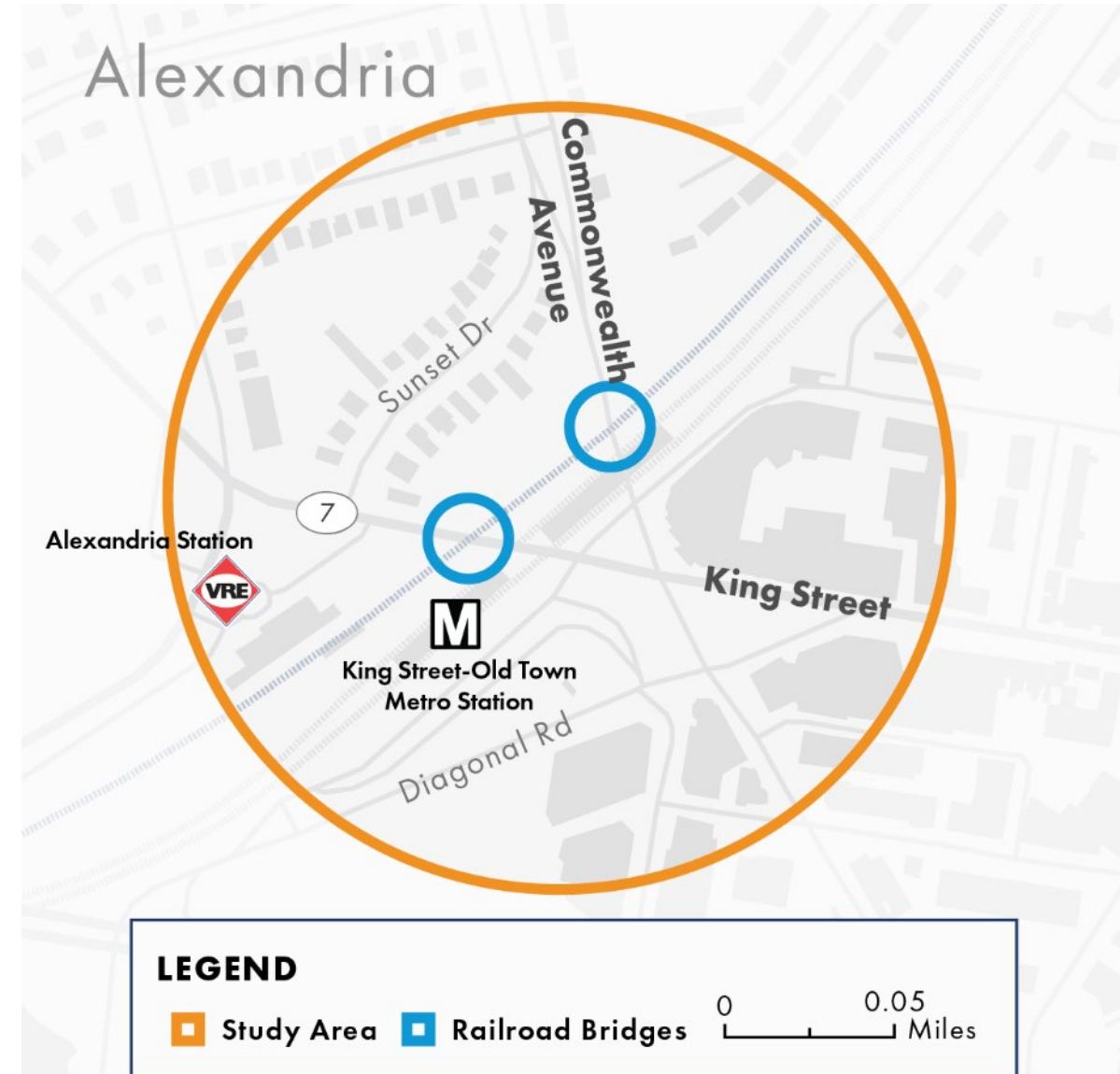
Alexandria Station Improvements

- VRE designed improvements to the existing Alexandria Station
 - Remove At-Grade Crossing
 - Improve Track / Platform Interface
 - Improve Track 1 Boarding



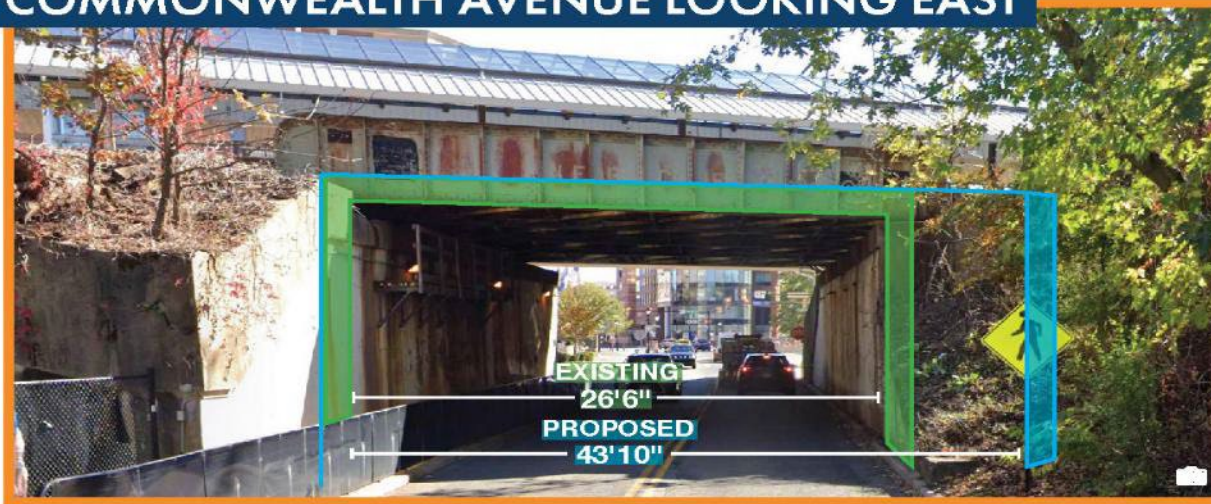
King and Commonwealth Replacement Rail Bridges

- VPRA and CSXT designed two new replacement rail bridges to span King Street and Commonwealth Avenue near Alexandria station
- To be constructed by VRE as part of the Alexandria Fourth Track and Station Improvements Project
- Will reduce maintenance, minimize service interruptions, and upgrade bridges to meet current standards
- Enhances safety for pedestrians and motorists traveling underneath the bridge

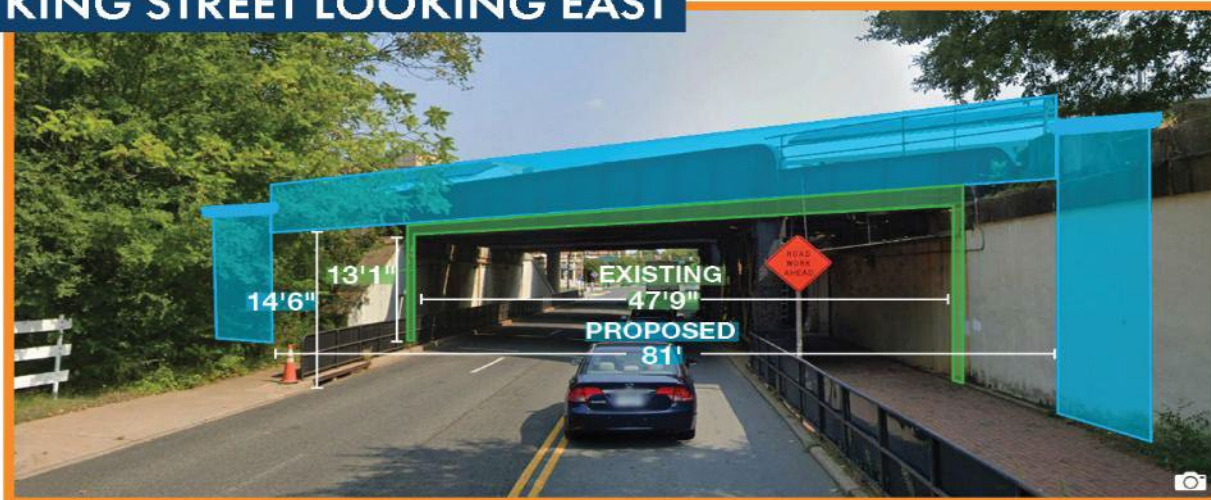


King and Commonwealth

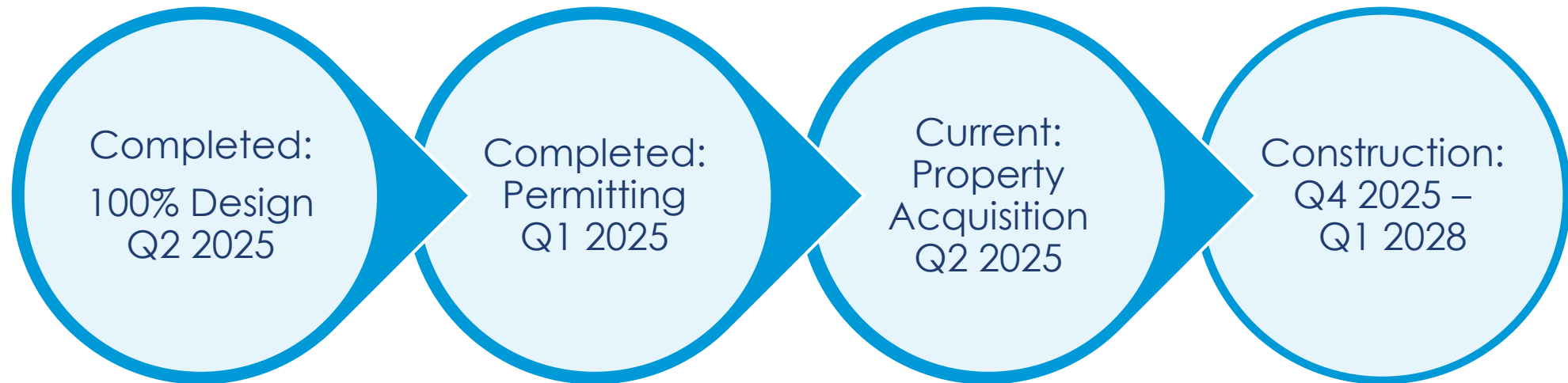
COMMONWEALTH AVENUE LOOKING EAST



KING STREET LOOKING EAST



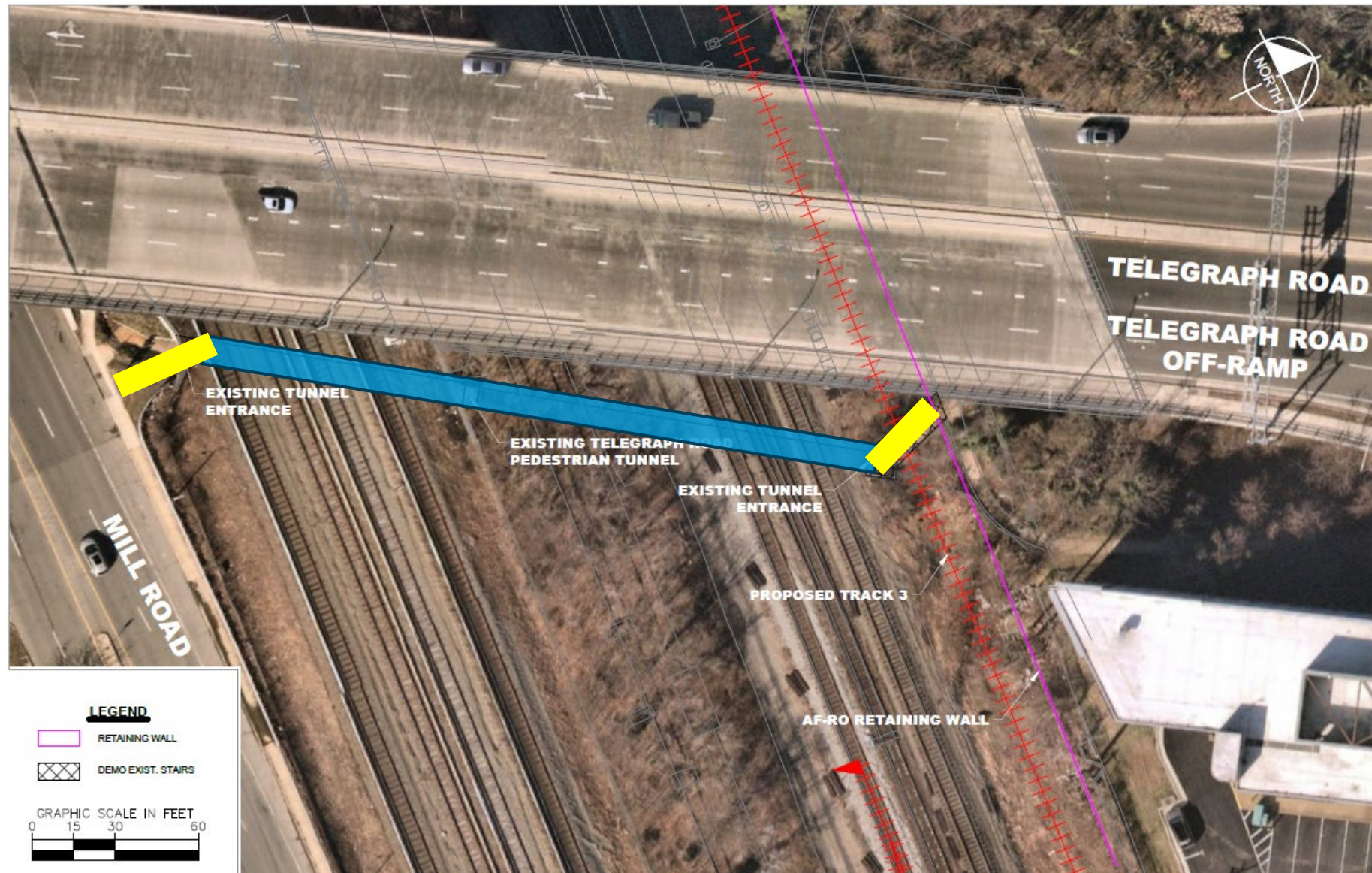
Alexandria Station and King and Commonwealth Project Timeline



Telegraph Tunnel Location

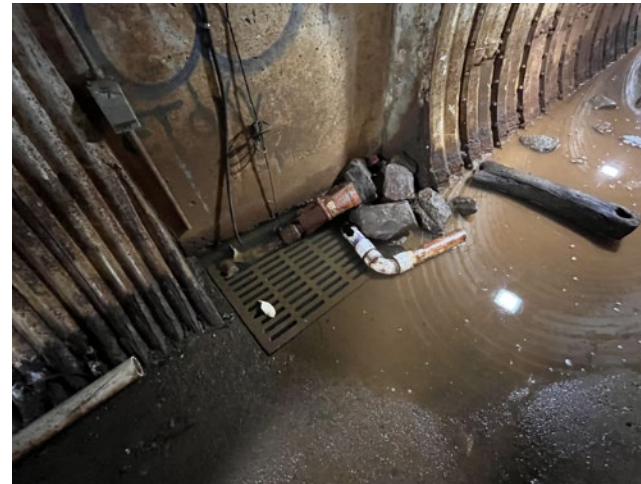


Fourth Track and Telegraph Road Tunnel

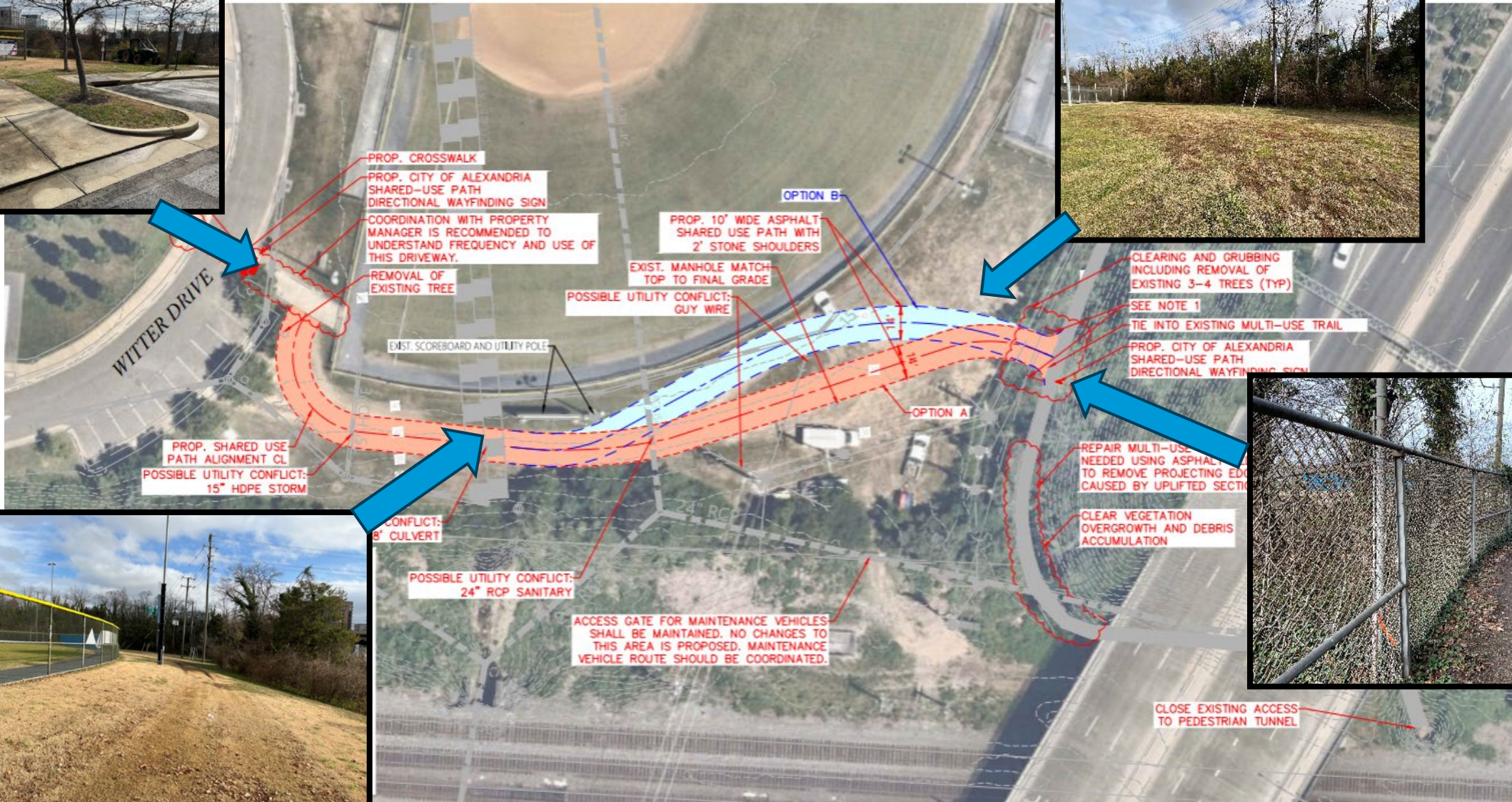


Telegraph Road Tunnel

- To be closed:
 - Built in 1947;needs significant repair
 - Drainage/flooding/lighting issues
 - Safety and visibility concerns
 - Not ADA accessible
 - Not accessible to bikes
 - Cost prohibitive
- Sidewalk open on Telegraph Road and Duke Street as temporary alternative
- New pedestrian access to be built late fall 2025
- Includes new shared use path through south side of Witter Field

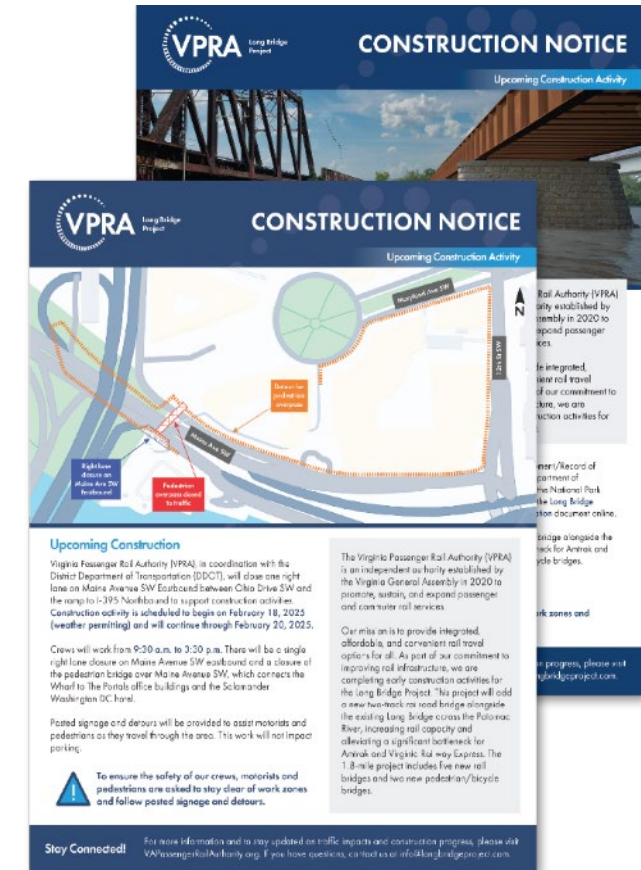


Witter Park Shared Use Path Connector

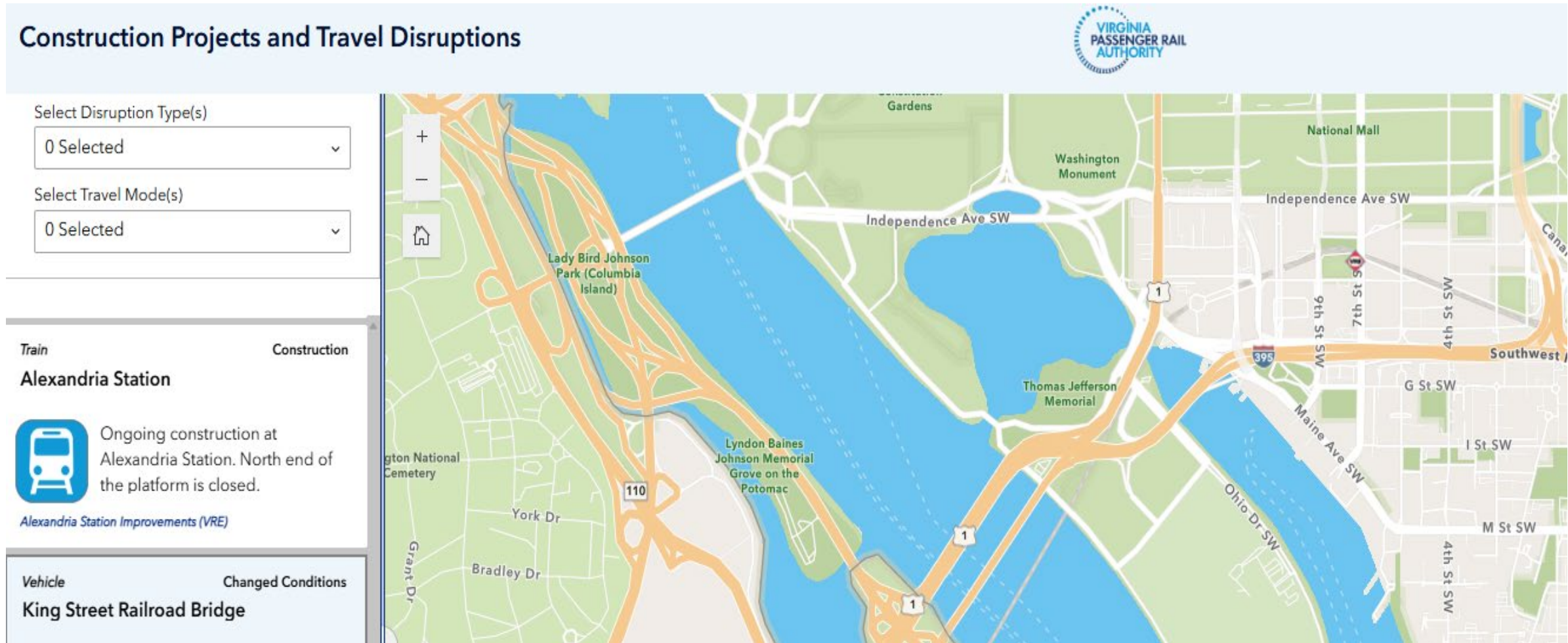


Keeping the Community Informed

- Project Hotline
- Digital Newsletter
- Project Fact sheets
- Traffic, Boating, and Pedestrian/Bike Advisories
- Signage
- Multi-media outreach
- Community Meetings and Events
- Community Advisory Group (CAG)



VPRA Construction Disruptions Map



How to stay connected



Visit project website:
VAPassengerRailAuthority.org



Sign up for email updates:
vapassengerrailauthority.org/contact



Contact us:
804.303.8700 | contactus@vpra.virginia.gov



VAPassengerRail



@VAPassengerRail



@VAPassengerRail



Virginia-Passenger-Rail-Authority



@VirginiaPassengerRailAuthority



For more information about VRE projects including:



- Crystal City Station
- Alexandria Station Improvements
- King and Commonwealth Replacement Bridges

Please visit:

<https://www.vre.org/projects/details/?ProjectId=19>



Q & A

The screenshot displays a Zoom Workplace chat window titled "Prep Session: Arl-Alx CAG Mtg #1". The main chat area shows a message from "erin murphy" with a large, semi-transparent reaction menu overlaid. This menu includes sections for "Send with effect" (with icons like a heart, rocket, thumbs up, crying face, confetti, and heart) and "Reactions" (with icons like clapping hands, thumbs up, heart, crying face, surprised face, and confetti). Below these are buttons for "Raise hand" and "Be right back", which are highlighted by a dashed blue rectangle. The bottom of the chat window features a toolbar with icons for Audio, Video, Participants, Chat, React, More, and End. On the right side, there is a sidebar with a header "Prep Session: Arl-Alx CAG Mtg #1" and a message: "Messages addressed to 'meeting group chat' will also appear in the meeting group chat in Team Chat". Below this is a section titled "Who can see your messages?" with a dropdown menu set to "Meeting group chat". At the bottom of the sidebar, there is a text input field with the placeholder "Type your question here in the chat" and a blue send button.