



Long Bridge Project

June 4, 2025

Community Advisory Group Meeting #2

Long Bridge Project (DC Side)



Introductions



Naomi Klein
Senior Planning Manager
VPRA



Kathryn Hendley
Design Coordinator
Long Bridge Project



Meredith Judy
Community Affairs
Manager, VPRA



Ian Langan
Project Manager
Long Bridge Project
VPRA



Tom O'Rourke
Skanska Project Executive
Long Bridge Construction
Team



Patrice Brooks
TB&A Community Affairs
Long Bridge Construction
Team





Agenda

1. Introductions
2. Long Bridge Project Overview
3. Long Bridge North
 - Construction Timeline
 - Maintenance of Traffic, Pedestrians, Bicycles, Boats
 - Public Meeting Update and Feedback
 - Outreach and Communications Methods

Project Overview



Rendering of bridges looking from Virginia

1.8 mile
Project

6,500 ft
Rail Bridges

2,800 ft
Potomac River Bike
-Pedestrian Bridge

3,500 ft
Retaining/
Crashwalls

70
Daily
Trains

37 +
Stakeholders

20,000
Feet of Track

3
Rail Operators

2
New Tracks
VA to DC

5
New Rail
Bridges

1
New Potomac River
Bike/Ped Bridge

1
Maine Ave Pedestrian Bridge



North and South Packages



- | | | |
|--|---|--|
| 1 A New Two Track Bridge Over the Potomac River | 4 A New Four Track Bridge Over Ohio Drive SW | 6 A New Four Track Bridge Over Maine Avenue SW |
| 2 A New Bicycle Pedestrian Bridge Over the Potomac River | 5 A New Four Track Bridge Over the Washington Channel | 7 A New Pedestrian Bridge Over Maine Avenue SW |
| 3 A New Two Track Bridge Over I-395 | | |

South Package

- Constructs a rail bridge and bike/ped bridge over the George Washington Memorial Parkway & Potomac River
- Design-build contract
- Construction estimated to begin mid-2026

North Package

- Constructs new bridges in the District north of the Potomac River, as well as retaining walls, embankments, ground improvements & crash walls
- Progressive design-build contract
- Early works construction packages to begin Spring/ Summer 2025



Major Stakeholders



US Army Corps
of Engineers®



REPUBLIC
PROPERTIES CORPORATION



WABA
WASHINGTON AREA
BICYCLIST ASSOCIATION



The Washington Marina
Yacht Basin One



... and more



Value-Add for the District



**Total Estimated Construction
Value to the District =
\$300M**



Additional Safety and Security Features

Corridor wide fencing,
security lighting, retaining/
crash walls, clearance
detectors, improved bridge
fender system/lighting



Vertical and Horizontal Clearance Improvements

I-395 rail bridge, Maine Ave rail
bridge, Maine Ave pedestrian
bridge, Potomac River
Maine Ave sidewalks, Anacostia
Trail, Ohio Drive, I-395



14th St Off-Ramp

Improved intersection
alignment, signals,
pedestrian
movements



New Pedestrian Bridge Over Maine Avenue

Includes new ADA
compliant ramp
replacing current
stairs-only access

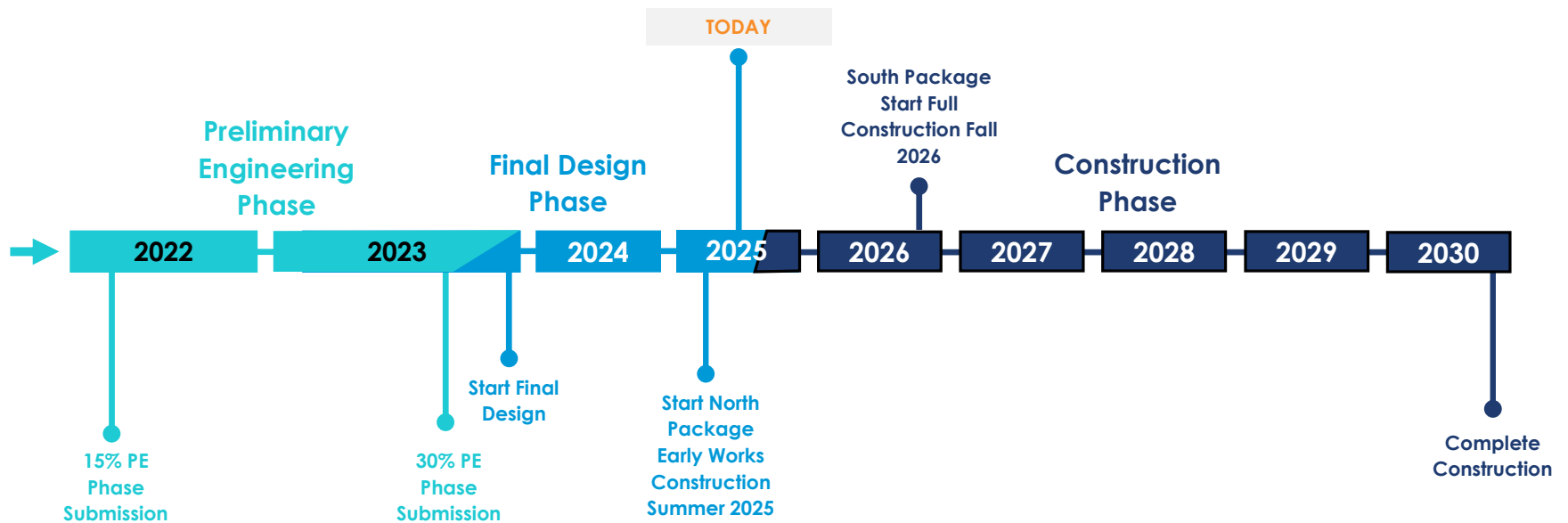


New Pedestrian Bridge over Potomac River and George Washington Parkway

Convenient, safe connection between Virginia and the District for park
visitors, recreationists, and pedestrian and bike commuters
Connects East and West Potomac Parks, George Washington Memorial
Highway Park, Mt. Vernon Trail, and Arlington's Long Bridge Aquatics & Fitness
Center and Park

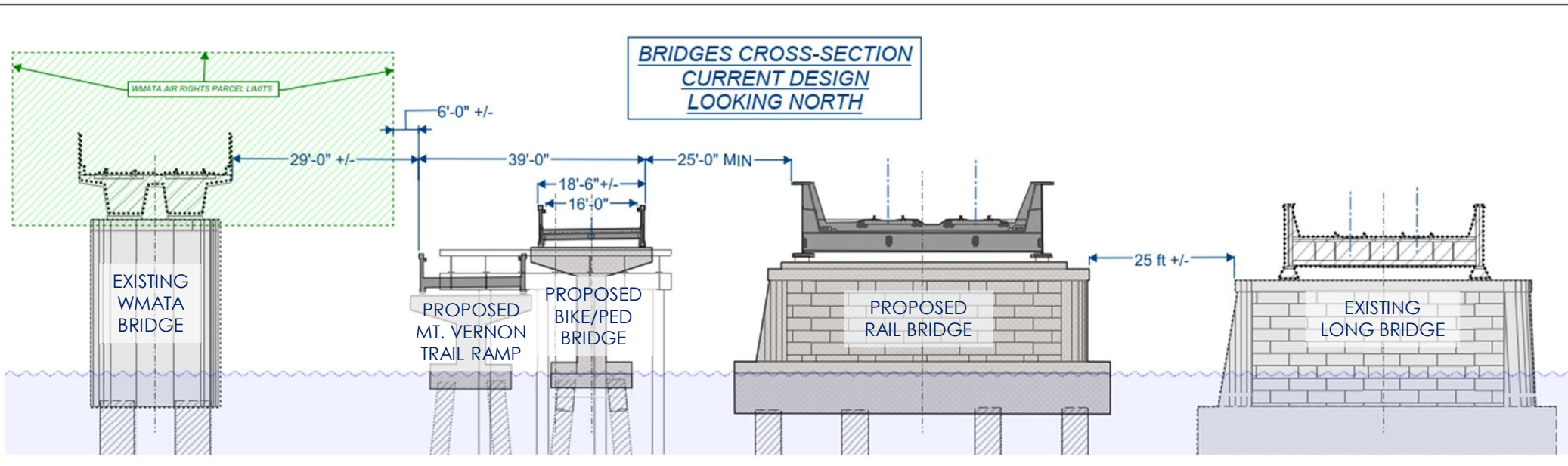
Design & Construction Timeline

Combined North and South Packages



Bridge Alignments

Looking from Arlington, Toward DC



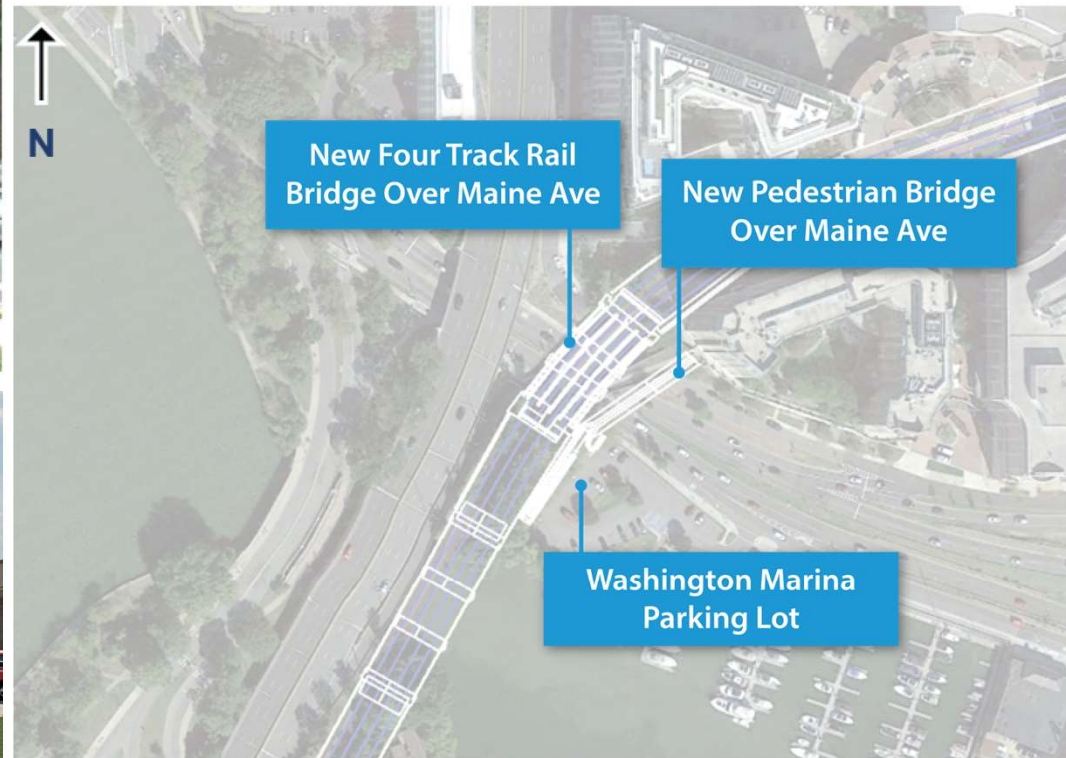
Space Constraints:

- 25 foot minimum between structures to ensure safety, security, and to allow for future bridge maintenance.
- Avoid WMATA pile foundations and air rights.

Potomac River Bridge

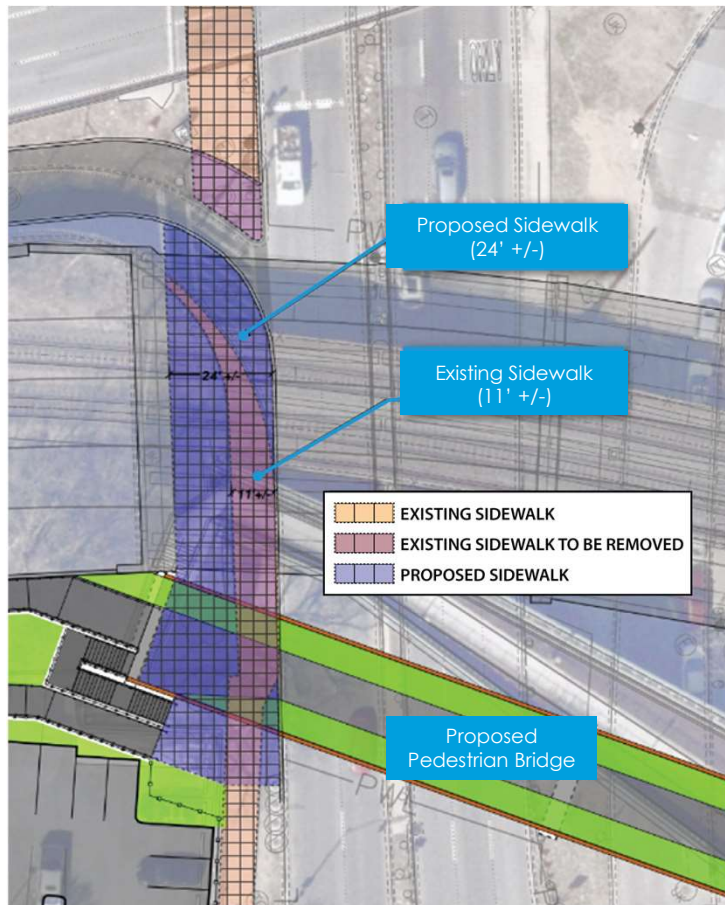


Maine Ave SW Rail Bridge



Maine Avenue SW Rail Bridge

Maine Avenue SW Rail Bridge – Sidewalk and Ramp



- Improve sight lines and visual experience for drivers, pedestrians and bicyclists.
- Proposed design will widen sidewalk (Anacostia Riverwalk Trail) from 11 feet to 24.5 feet.



Existing Trail/Sidewalk Width under Existing Rail Bridge

Potomac River Bicycle – Pedestrian Bridge



- New recreational connection between Mt. Vernon Trail and East Potomac Park
- DC to own and maintain
- More than double the width of the current bike-pedestrian path
- Existing 14th Street Bridge Bike-Ped Path will remain



Existing Bicycle-Pedestrian Network



Connection Designs

East Potomac Park – Ohio Drive SW



View from East Potomac Park (Ohio Drive): New Rail & Bicycle-Pedestrian Bridges

Pedestrian Bridge Over Maine Avenue

Ownership & Coordination

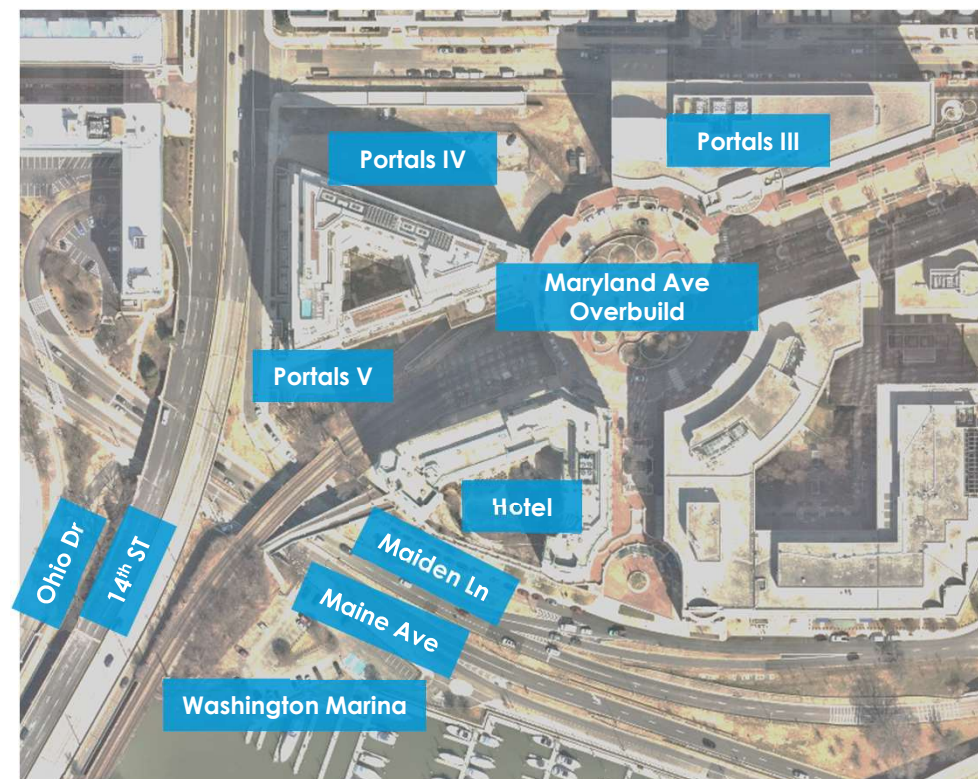
Privately owned by businesses on **Maryland Ave Overbuild (PPIA)**.

Stakeholder Coordination includes:

- **Pedestrian Bridge Owners** – Design input and approvals.
- **Washington Marina Company & The District** – Addressing parking lot impacts.
- **The Wharf** – Managing construction impacts and activities
- **DDOT** – Maintenance of Traffic (MOT)
- **National Capital Planning Commission (NCPC) and Commission of Fine Arts (CFA)** – Overseeing design and aesthetic decisions.

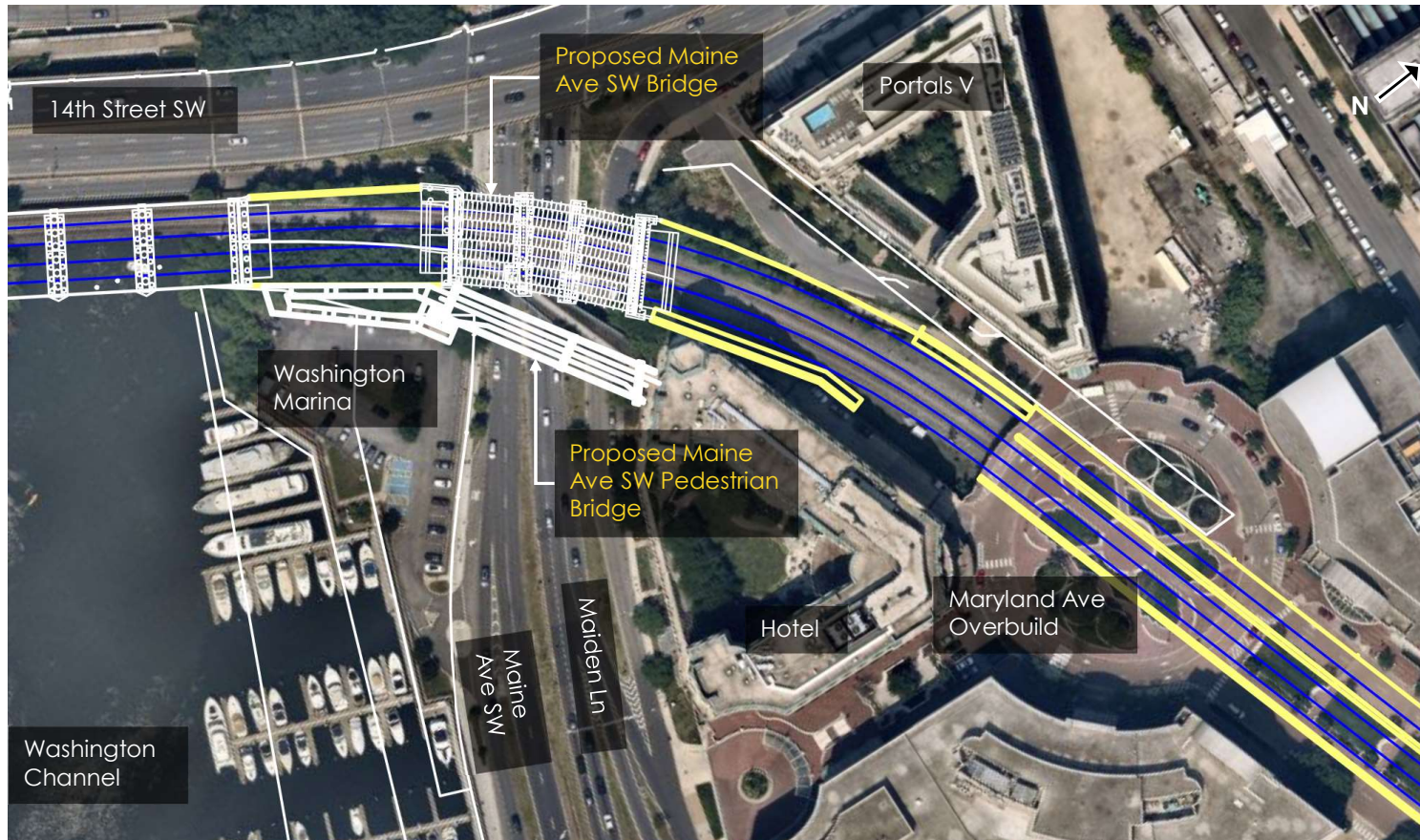
Maine Avenue Rail Bridge Expansion

- **Existing two-track rail bridge** will be **removed and replaced** with a **four-track rail bridge**.
- **Tracks southwest of Maryland Avenue Linear Park** will be expanded from **two to four**.
- **Proposed aesthetic design** will **maintain the character** of the existing bridge.



Maine Ave SW/Maryland Ave SW Overbuild area

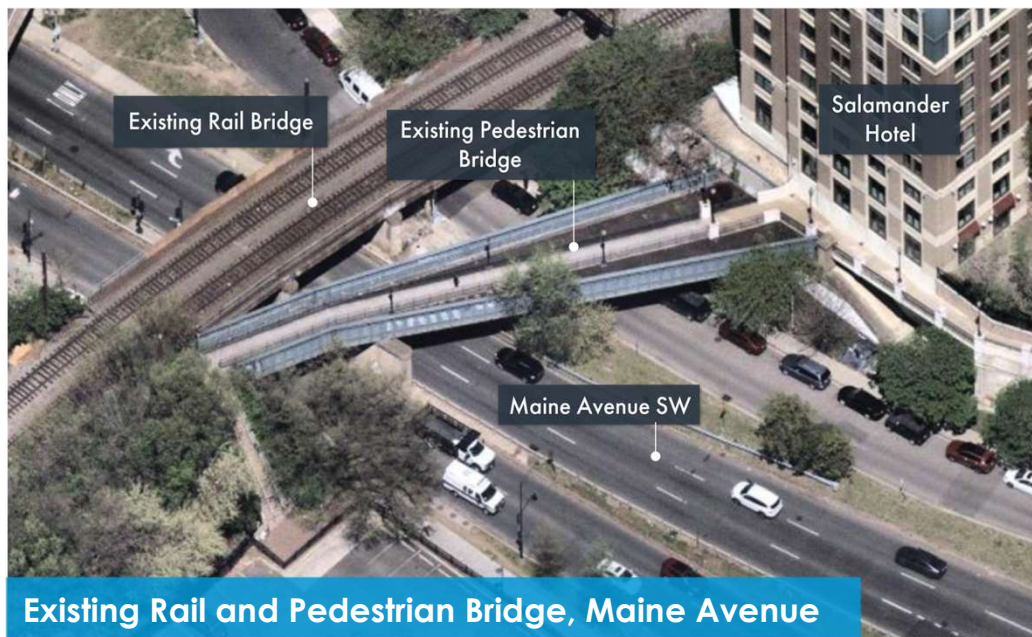
Maine Ave SW & Maryland Ave Overbuild



- Existing two-track rail bridge across Maine Avenue SW replaced with a four-track rail bridge.
- Expand existing tracks southwest of the Maryland Avenue Linear Park from two to four.
- New bridge will resemble the characteristics of the existing bridge.

Maine Ave SW Pedestrian Bridge

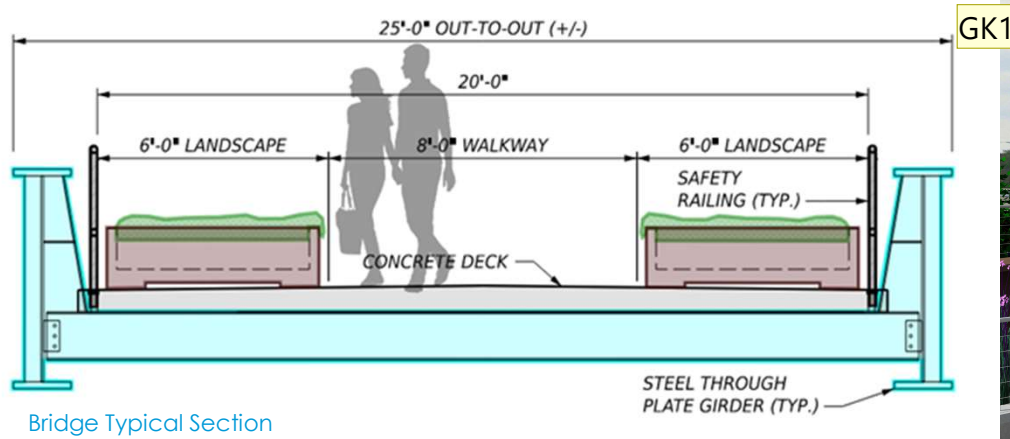
Existing Pedestrian Bridge



Pedestrian Bridge Over Maine Avenue



Maine Ave SW Pedestrian Bridge

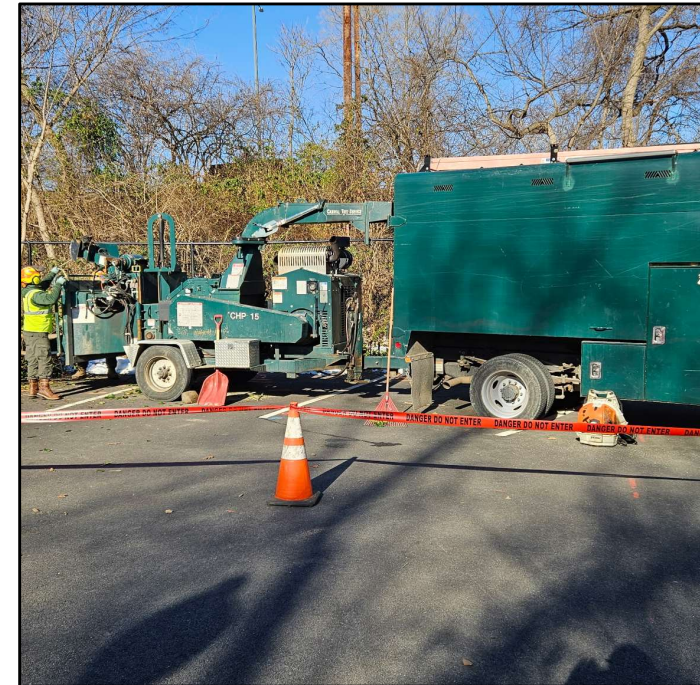
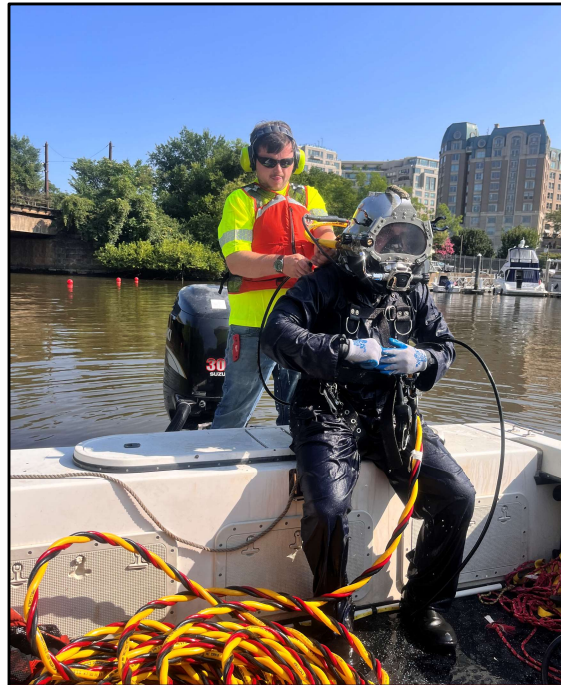


Looking South From North End

What is Happening Now?

Pre-Construction Activities

- Archaeological testing
- Vibration monitoring
- Borings
- Test piles
- Tree and brush clearing
- Maintenance of Traffic Plans (auto, pedestrian, bike, boat)



Stakeholder Coordination

Stakeholders (monthly/weekly meetings):

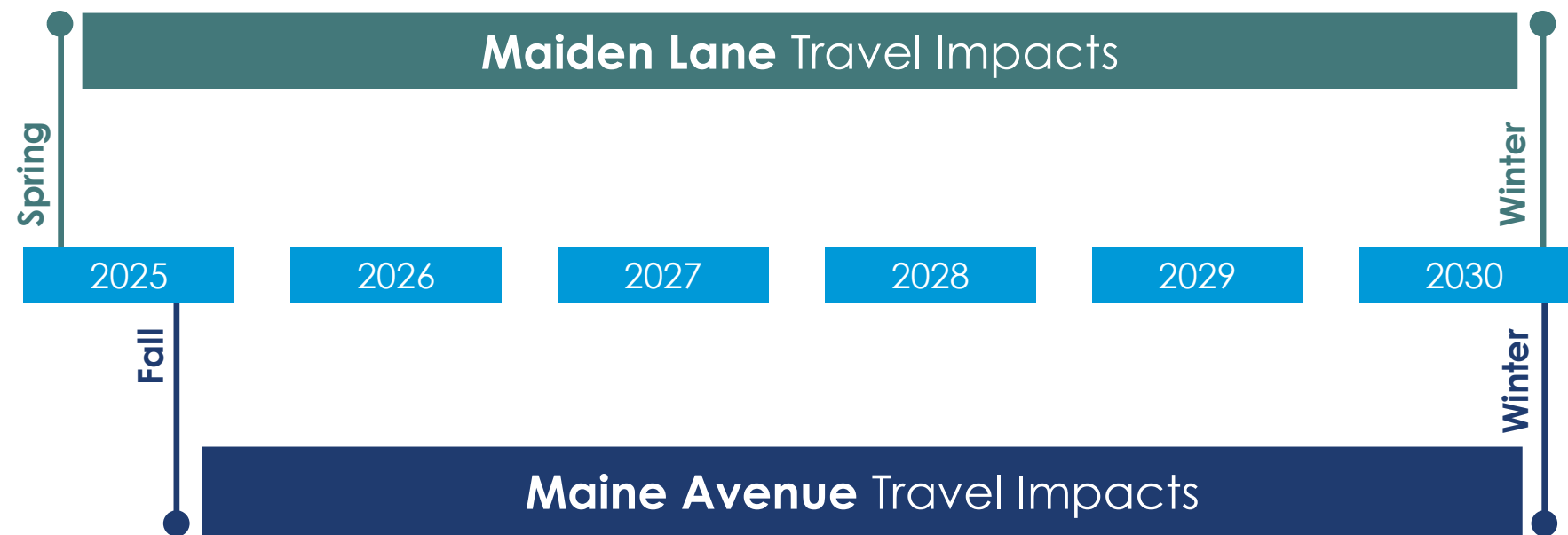
- CSX, Virginia Railway Express (VRE), Amtrak
- District Department of Transportation (DDOT)
- National Park Service (NPS)
- Adjacent Property Owners



Major Topics:

- Travel flow (auto, rail, bike, pedestrian, boat)
- Traffic analysis, lighting, signals
- Noise & vibration
- Structures (crashwalls, bridges, retaining walls)
- Roadway, drainage & landscaping
- Utilities
- Inspections & permits
- Adjacent projects and special events
- Public outreach

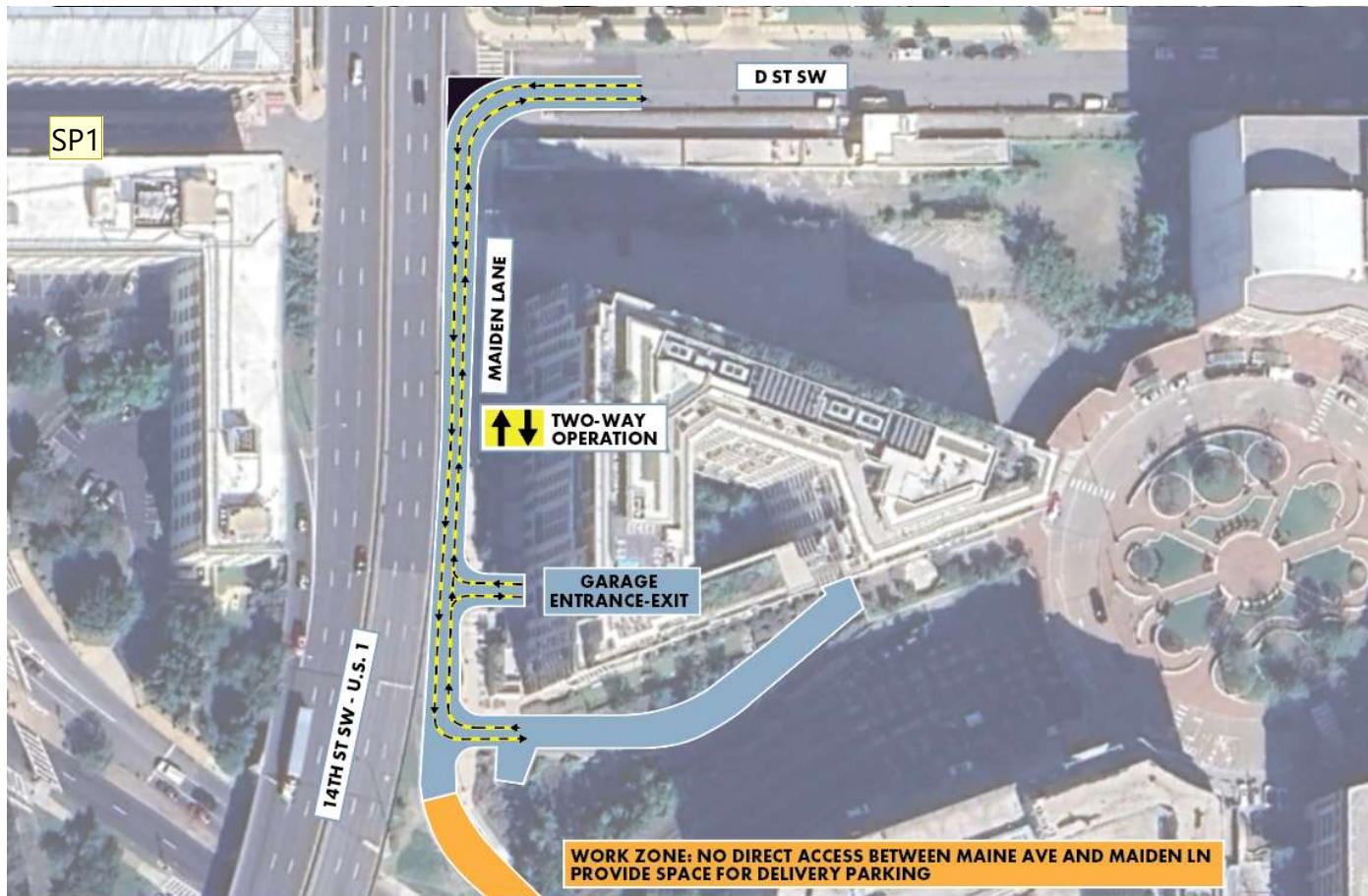
Upcoming Construction Impacts



*Schedule Subject to Change



Maiden Lane Two-Way Operation



1. Changes Maiden Lane to Two-Way Operation

- Access only from D St
- Essentially a **Private Access** with much less traffic volume
- Approx. 10 short-term, metered parking spots removed

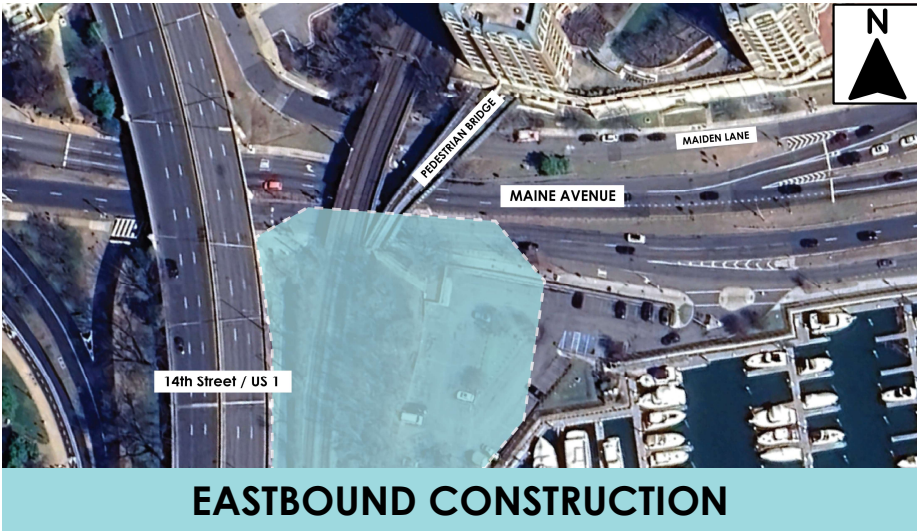
2. This plan will allow uninterrupted access to the garage and loading dock.

3. Restricts access to Maiden Lane from Maine Avenue (shown in orange)




GS

Maine Avenue Construction Areas & Schedule



(*subject to change)

Maiden Lane & Maine Avenue Travel Highlights

 **Goal:** maintain **SAFE ACCESS** for motorists, bicyclists and pedestrians – Maine Ave, Hotel, Portals, Marina & Train Operations – while streamlining construction and minimizing impacts

 Occasional **Nighttime Lane** Closures and **Weekend Detours**

-  • Maiden Lane Closed to Improve Safety
- 14th Street Ramp Closed for Periods

GS1

 **Maine Ave Pedestrian Bridge Crossing Maintained at All Times**

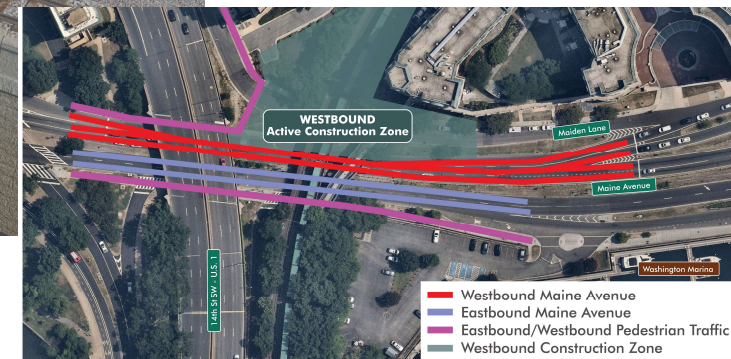
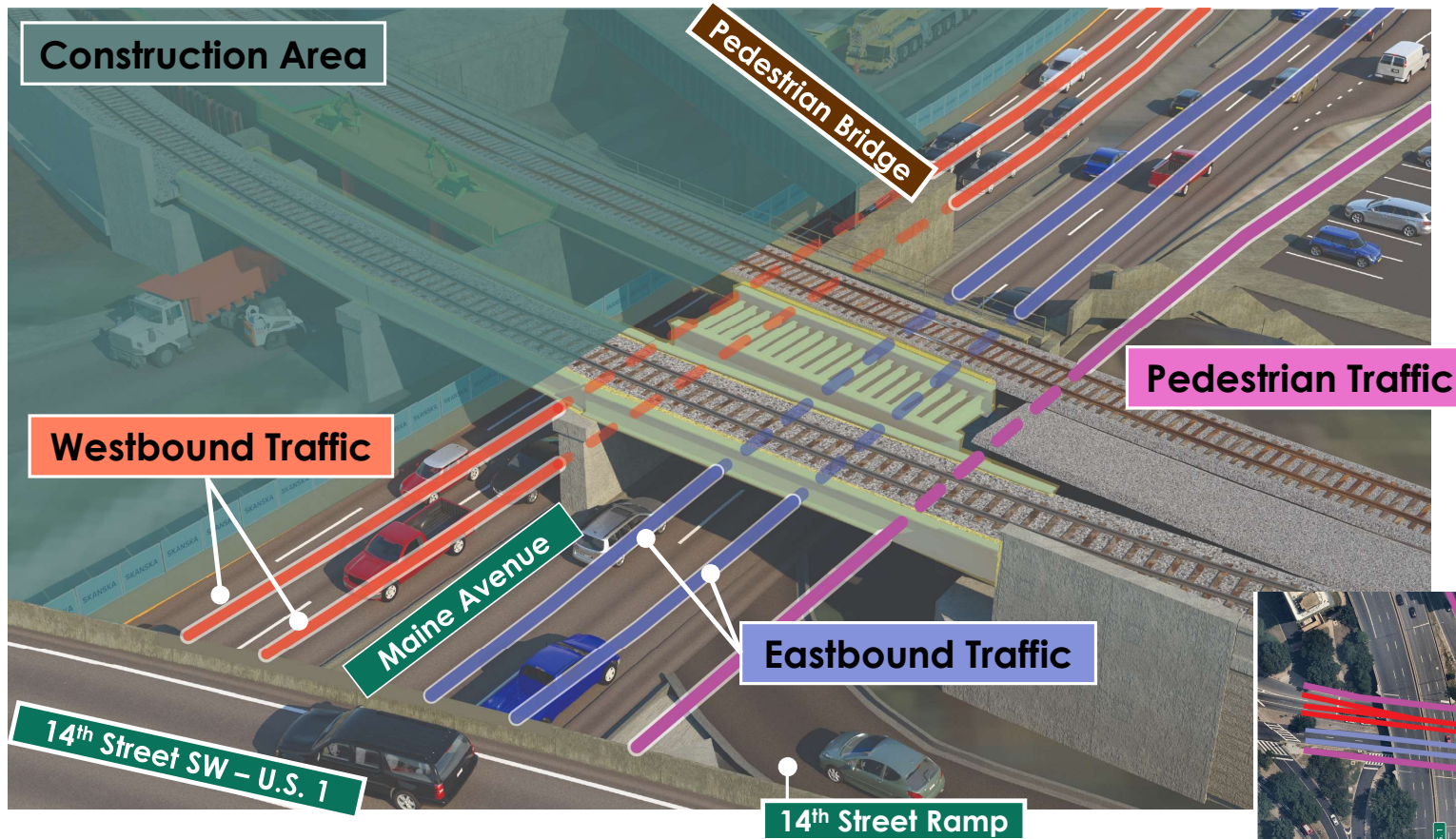
- Requires a Temporary Pedestrian Bridge near Marina Entrance



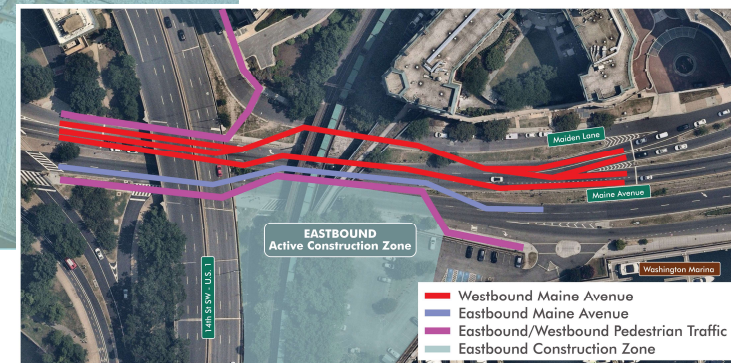
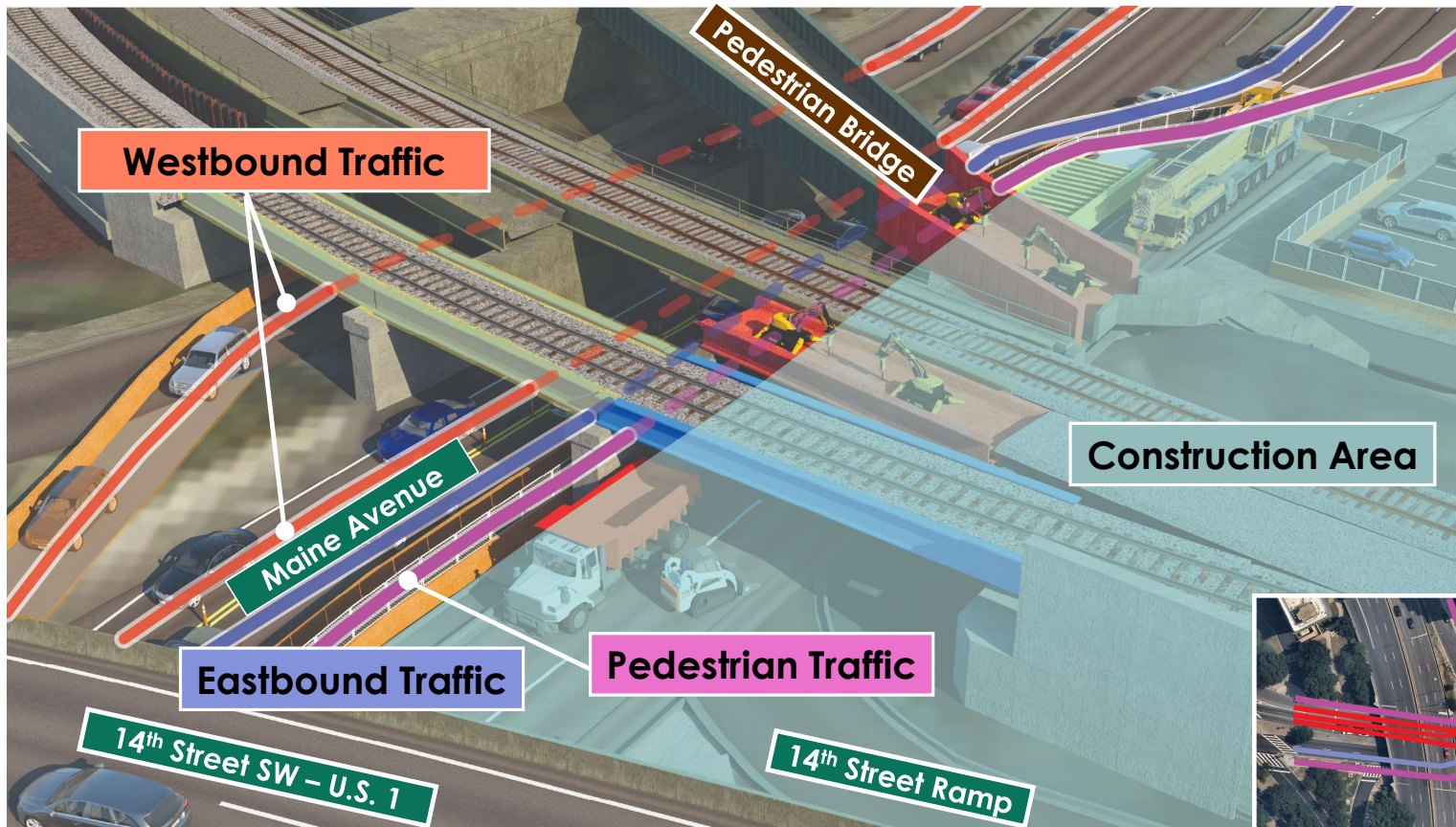
G

Maine Ave – Westbound Construction Traffic Pattern

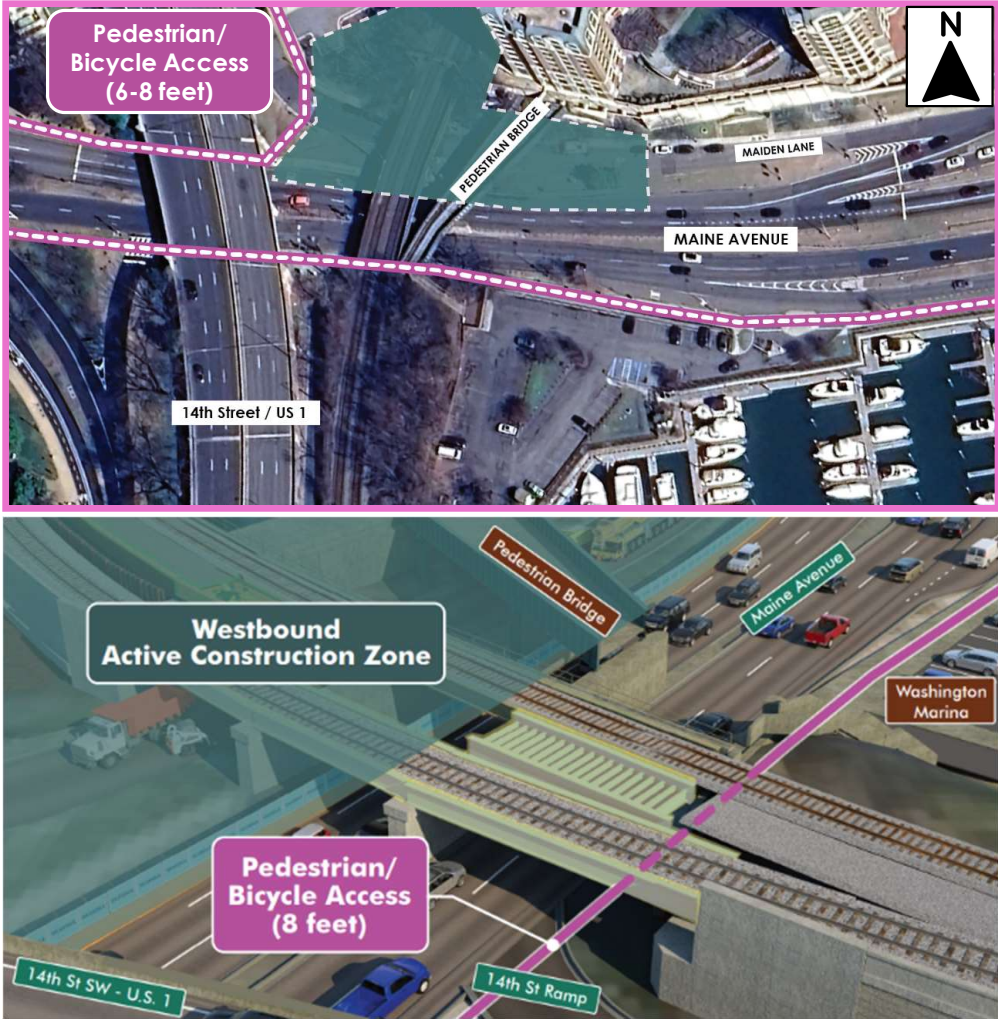
1



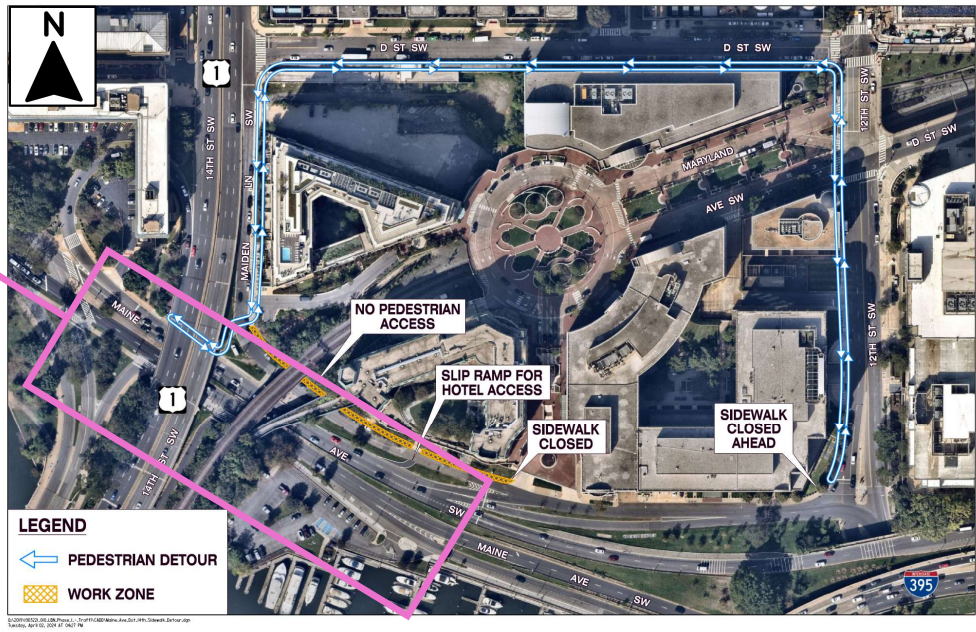
Maine Ave – Eastbound Construction Traffic Pattern



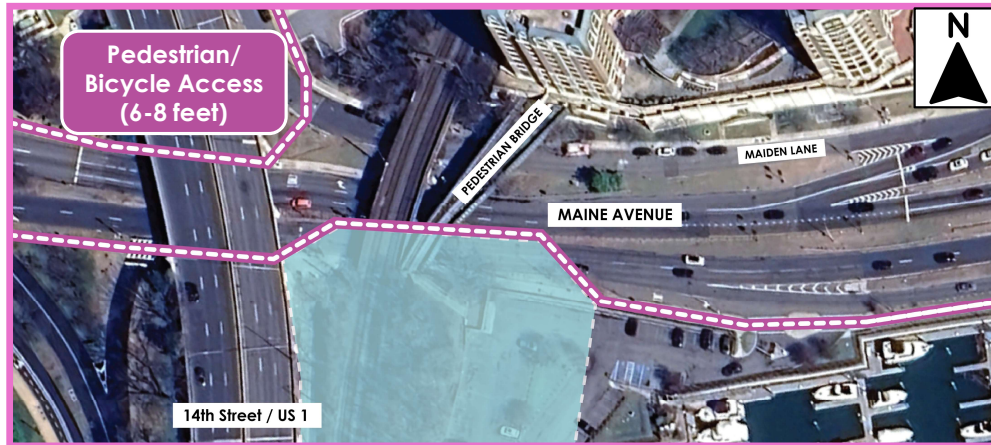
Pedestrian/Bicycle Accessibility – Westbound Construction



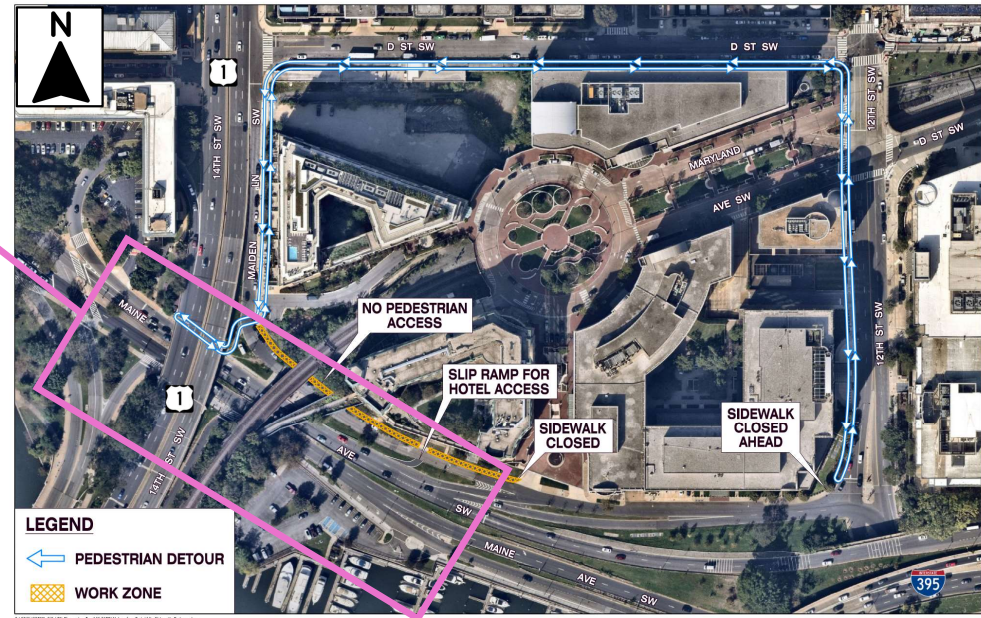
Northside Maine Avenue Full Pedestrian Detour



Pedestrian/Bicycle Accessibility – Eastbound Construction



Northside Maine Avenue Full Pedestrian Detour



Pedestrian/Bicycle Accessibility



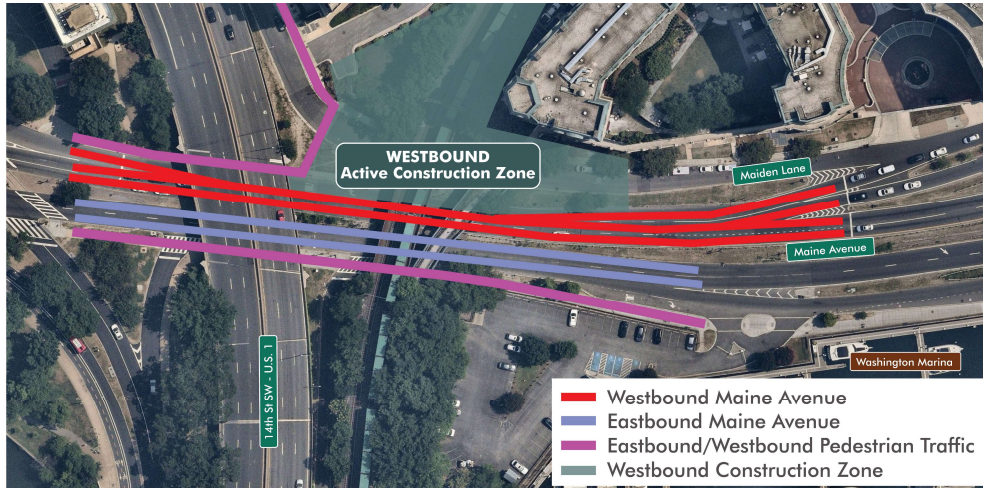
Access will be 8 feet wide at all times



During Cherry Blossom season – Access will include two 8-foot-wide paths.

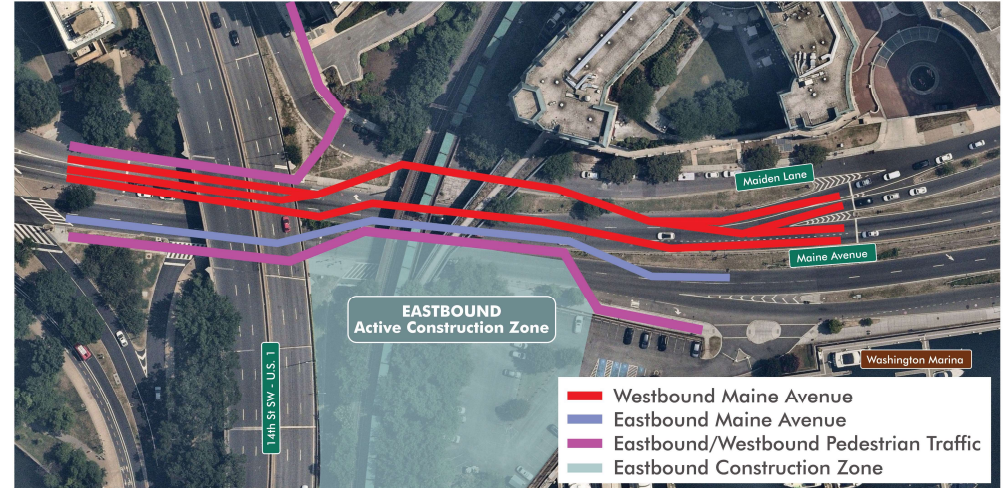


Maine Avenue and Maiden Lane Travel Summary



Westbound Construction

- Maintains two travel lanes in each direction.
- Maintains pedestrian walkway eastbound.



Eastbound Construction

- Maintains two travel lanes for Westbound traffic.
- Maintains one travel lane for Eastbound traffic.
- Maintains pedestrian walkway eastbound.

Work Zone Mitigation Measures

- Comprehensive Transportation Management Plan
- Close coordination with DDOT
- Traffic Incident Management Plan
- Monitor Traffic Operations & Safety
 - Work zone setups
 - Crashes
 - Queue lengths & travel times
 - Traffic data
- Proactive Public Outreach
- Adjacent Project & Special Event Meeting



LONG BRIDGE NORTH

Transportation Management Plan
JMT JOB NO. 19-03221-001

Submitted to:

June 2024








A



33

Minimizing and Mitigating Construction Disturbances

The Long Bridge Team is aware that construction may cause community interference. We are committed to doing everything we can to minimize and mitigate those disturbances. For example:

-  Adhere to the District's noise ordinance.
-  Use backup alarms that regulate volume based on ambient conditions.
-  Make every effort to limit night work for both noise and safety reasons.
-  Monitor vibration to ensure structural integrity of adjacent buildings.
-  Regularly monitor noise levels to ensure we stay within established limits.
-  Employ drilling equipment (versus pile driving) to the maximum potential.
-  Utilize "whisper quiet" generators with lower decibel levels.

Boating Community Travel Impacts

Potomac River

- **May:** Geotechnical borings in the river.
- **Summer 2025:** Test piles in the river.

The navigation channel will remain open throughout construction.

- Primary navigational channel may shift for short periods.
- Minor encroachments to navigation channel.
- No Wake Zone.
- Buoys to guide marine traffic.

Washington Channel

- No spring/summer work planned

Washington Marina and parking lot will remain operational during construction.

- Buoys to guide marine traffic.
- The entire Washington Channel as a No Wake Zone.



Spring 2025 Public Outreach



Community Advisory Group Meeting #1
(VPRA Hosted 3/5)



Southwest Businesses Meeting
SW Business Improvement District
Office (VPRA Hosted 4/29)



Tabling at Neighborhood Events
- Hancock Park (3/5)
- Southwest Neighborhood Assembly (4/21)



Public Meeting at Southwest DC
Library (VPRA Hosted 5/7)



Door-to-Door Outreach (30 businesses)
and Signage Placement (SW Waterfront
and Wharf 4/15)



Bike to Work Day (6 locations
throughout DC and VA - 5/15)



Key Takeaways from Outreach Events

Community Advisory Group Meeting: March 5

- Long-term ownership and maintenance of Pedestrian/bicycle bridge.
- Impacts on air quality and environmental sustainability
- Engagement with underrepresented communities
- ADA accessibility

SW Businesses Meeting: April 29

- Disruptions to local businesses
- Air quality and environment
- Boating navigation: bridge height and lighting
- Coordination with District agencies, adjacent projects
- Bridge spacing and safety

General Public Meeting: May 7

- Communication with adjacent residents
- Integration of public art
- Noise ordinance enforcement
- Steel fabrication
- Continuity of rail service throughout construction



All meeting materials available on website: www.LongBridgeProject.com



How to Stay Up To Date



Announcements on Long Bridge website:
www.LongBridgeProject.com



E-mail subscriber notices (Sign up to receive)
info@longbridgeproject.com

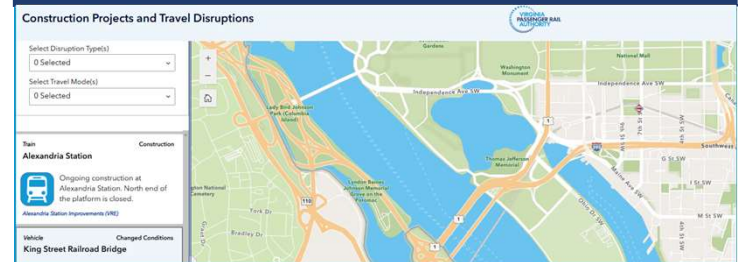


VPRA Social Media Posts
Facebook, Instagram, X, LinkedIn, YouTube

Portable Message Signs On-Site



VPRA Construction Disruptions Map



DDOT and NPS Traffic Advisories

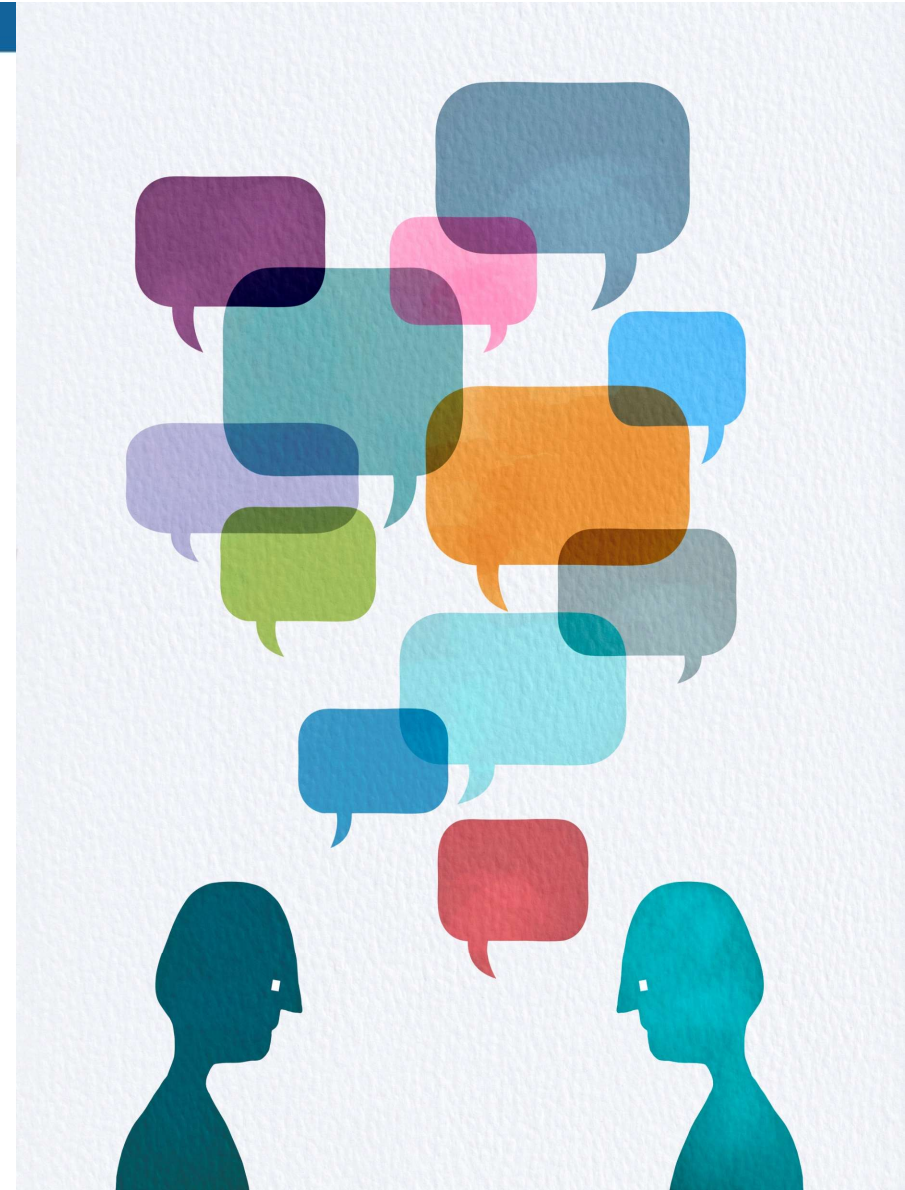
Press Releases to Major Outlets

Community Meetings / Events

Door to Door Outreach

Open Discussion

- What questions do you have for the Long Bridge Team?
- Upcoming events/meetings for the Long Bridge Team to attend?
- How can the CAG help us spread information?



How to stay connected



Visit project website:
www.LongBridgeProject.com



Sign up for email updates:
info@longbridgeproject.com



Contact us:
(202) 769-1808

Like

Share

Follow



@VAPassengerRail



@vapassengerrail



@vapassengerrail



virginia-passenger-rail-authority



@viriniapassengerrailauthority

