



- 1 A New Two Track Bridge Over the Potomac River
- 2 A New Bicycle Pedestrian Bridge Over the Potomac River
- 3 A New Two Track Bridge Over I-395

- 4 A New Four Track Bridge Over Ohio Drive SW
- 5 A New Four Track Bridge Over the Washington Channel

- 6 A New Four Track Bridge Over Maine Avenue SW
- 7 A New Pedestrian Bridge Over Maine Avenue SW

PROJECT SUMMARY

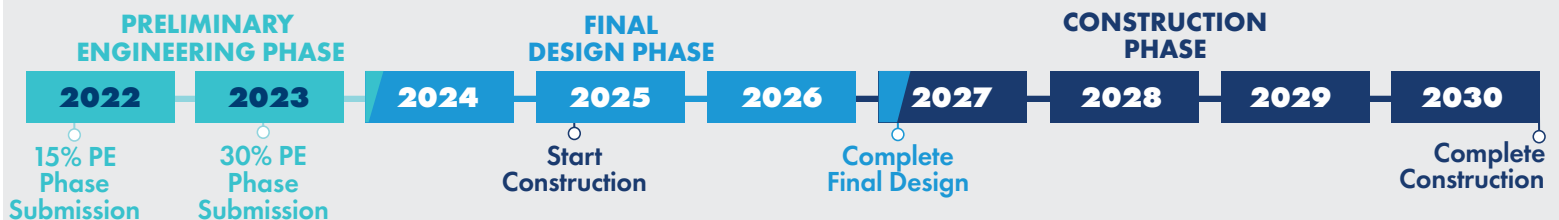
The Virginia Passenger Rail Authority's Long Bridge Project will add a new two-track railroad bridge next to the existing Long Bridge across the Potomac River. The new rail bridge will unclog a major transportation bottleneck between the north and south regions of the U.S., improving reliability and growing the nation's passenger and freight networks.

The project will also create a bicycle and pedestrian bridge over the river, connecting Arlington's Long Bridge Park and the Mount Vernon Trail to the District's East and West Potomac Parks. Additional improvements along the 1.8-mile project corridor include five rail bridges and two pedestrian/bicycle bridges.

PROJECT BENEFITS

- Increased rail capacity that enables more frequent passenger rail service with better on-time reliability.
- Improved bicycle and pedestrian connectivity between Northern Virginia and DC with a new sixteen-foot-wide bicycle-pedestrian bridge.
- Billions of dollars invested in the regional economy.
- Infrastructure improvements that increase safety and security along the project corridor.

CONSTRUCTION TIMELINE



KEEP TRACK OF PROJECT UPDATES

www.longbridgeproject.com

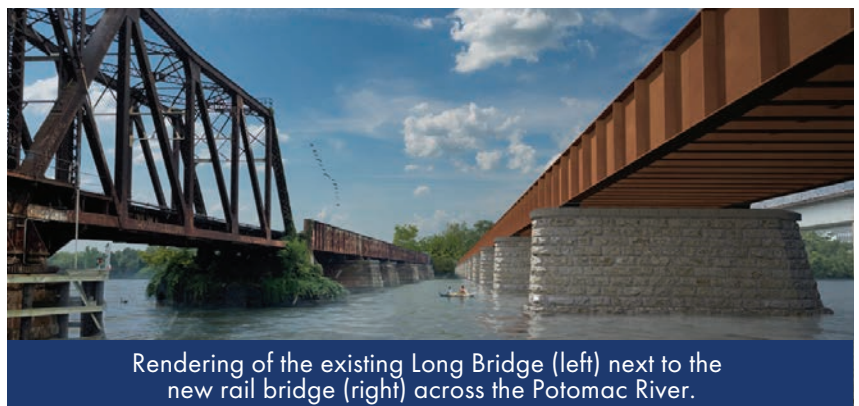
Email: info@LongBridgeProject.com

Call: (202) 769-1808

 /VAPassengerRail

 @VAPassengerRail

 Virginia Passenger Rail Authority



Rendering of the existing Long Bridge (left) next to the new rail bridge (right) across the Potomac River.

PRE-CONSTRUCTION ACTIVITIES

Happening Now

VPRA's commitment to the community is to make every reasonable effort to keep construction impacts to a minimum while building the project as efficiently and safely as possible. Plans and processes are in place to proactively inform the public and other stakeholders in advance of construction activities that are particularly impactful and to minimize surprises.

Current pre-construction activities include archaeological testing, vibration monitoring, borings, test piles, and tree and brush clearing.

UPCOMING WORK

Maine Avenue SW Access Road to 14th Street SW

Travelers will see impacts at Maine Avenue and the access road to 14th Street SW during construction of the new four track rail bridge and new Maine Avenue pedestrian bridge.

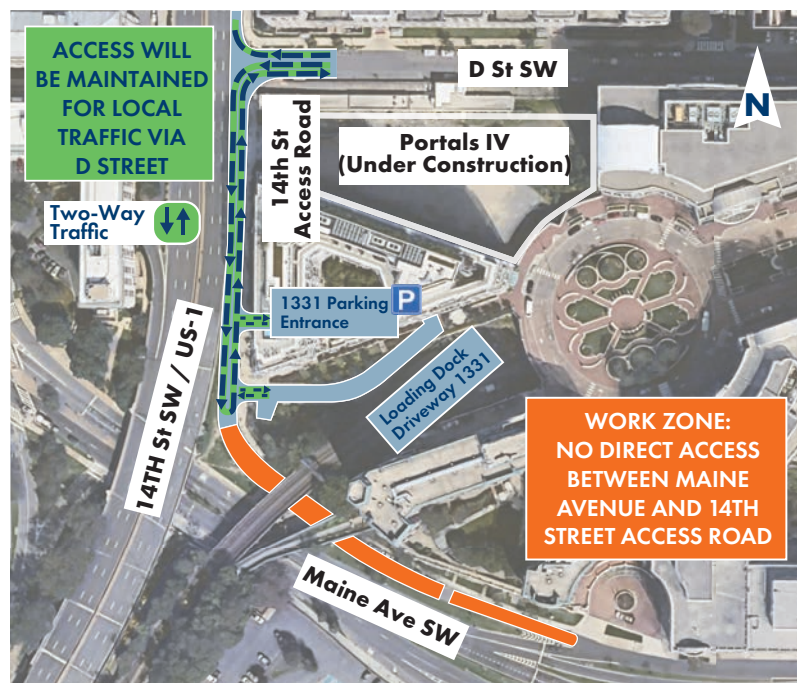
This work will require temporarily closing the Maine Avenue SW Access Road to 14th Street SW through the work zone and remarking the northern section as a two-way street.

During construction, the access road will:

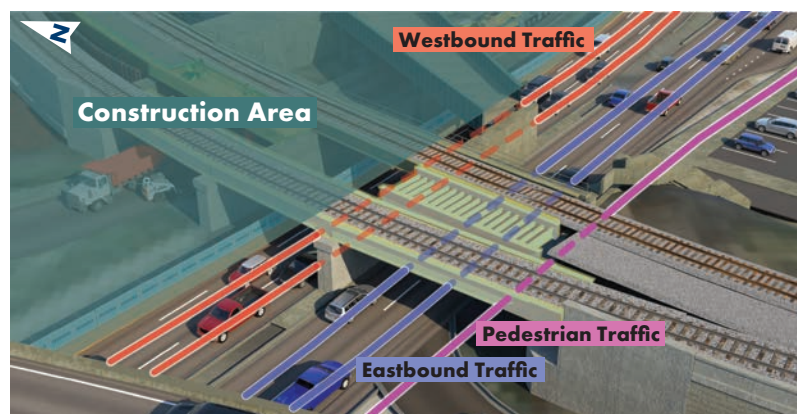
- Only be accessible from D Street.
- Primarily act as a private access with significantly less traffic volume.
- Not include any on-street parking.
- Maintain uninterrupted access to the garage and delivery locations.

Construction on Maine Avenue will require two temporary traffic patterns to maintain vehicle and pedestrian access, and work will be completed in four major phases, as shown in the timeline below. The graphics to the right show the traffic patterns that will be in place. During this time:

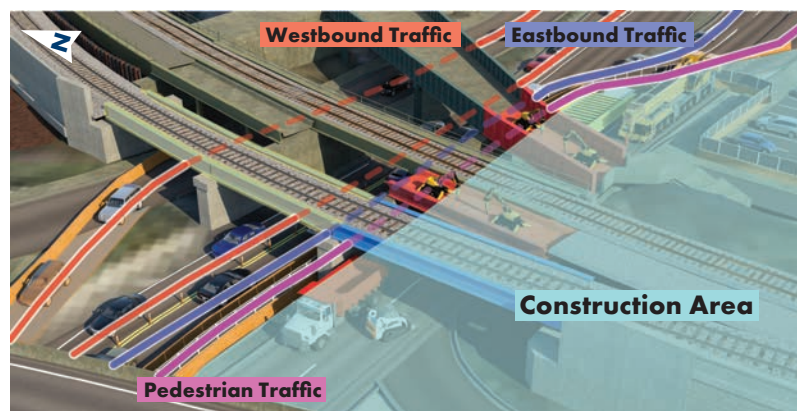
- Occasional nighttime lane closures and weekend detours may occur.
- Access to the Maine Avenue SW Access Road to 14th Street SW will be temporarily closed from Maine Avenue to the 1331 delivery driveway.
- The 14th Street Ramp to Maine Avenue will be temporarily closed at times.
- The pedestrian bridge crossing will be maintained via a temporary pedestrian bridge near the marina entrance while the new bridge is constructed.



Maine Avenue SW Access Road to 14th Street SW Traffic Pattern



Maine Avenue Westbound Construction Traffic Pattern



Maine Avenue Eastbound Construction Traffic Pattern

Maine Avenue Construction Phases - Preliminary Schedule

