



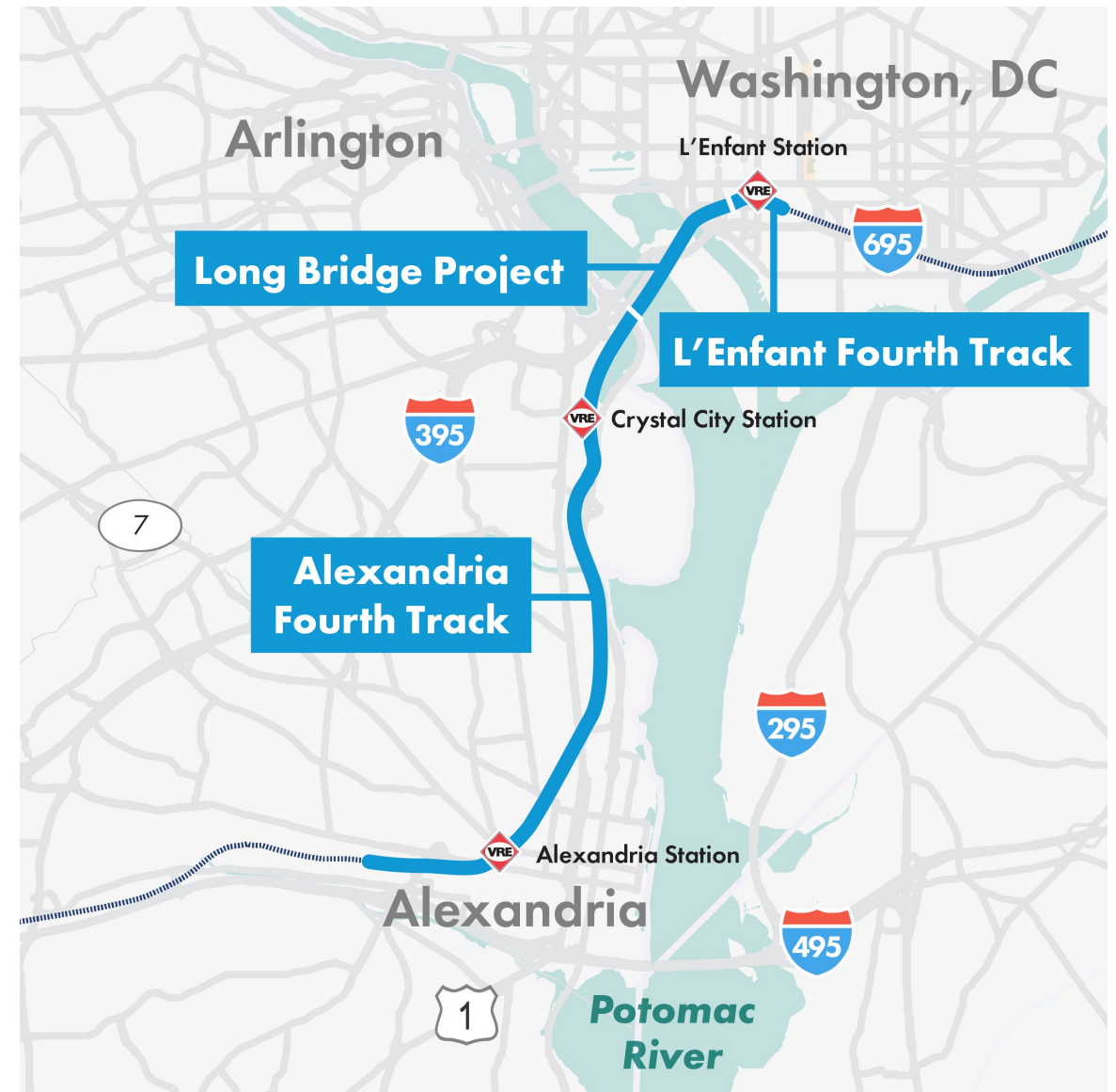
Long Bridge and Alexandria Fourth Track Projects

October 9, 2025
Arlington and Alexandria
Community Advisory Group Meeting #2



Agenda

1. Welcome
2. VPRA Overview
3. Long Bridge Project
4. Alexandria Fourth Track Project
5. Crystal City Station Improvements
6. King and Commonwealth Replacement Rail Bridges
7. Q&A



Introductions



Naomi Klein
Stakeholder Manager,
VPRA



Gerica Goodman
Director, External Affairs &
Communications, VPRA



Bryon Breese
Construction Project
Manager



Meredith Judy
Community
Affairs Manager,
VPRA



Sarah Hoover
Project Manager,
Alexandria Fourth Track,
VPRA



Mark Schnauffer
Engineering Project
Manager, VPRA



Jason Bortz
Project Manager Design
and Construction, VRE

Community Advisory Group (CAG)

- Sounding board for community questions, concerns, and impacts.
- Represent the diverse interests in Northern VA
 - Residents
 - Business owners
 - Property manager
 - Boaters
 - Special interest groups (e.g., bike advocacy)
 - NoVA agencies
 - Elected officials
 - Other key stakeholders
- Quarterly meetings (more often, as needed)
- Virtual Meetings
- Site walks/tours



Virginia Passenger Rail Authority (VPRA) Overview

- Created in 2020 by the General Assembly
- Responsible for expanding and promoting passenger and commuter rail
 - Manages passenger rail in Virginia
 - Designs, builds, finances, and maintains rail facilities
- Partners with Amtrak, Norfolk Southern, CSX Transportation (CSXT), and Virginia Railway Express (VRE) to operate passenger and commuter rail service



Transforming Rail in Virginia (TRV) Program

Making generational investments to improve rail transportation

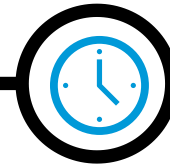
- Develop capital projects and acquire railroad right-of-way
- Rework passenger and freight operations
- Deliver high-performance passenger rail



Increase **capacity** to accommodate more passenger rail service



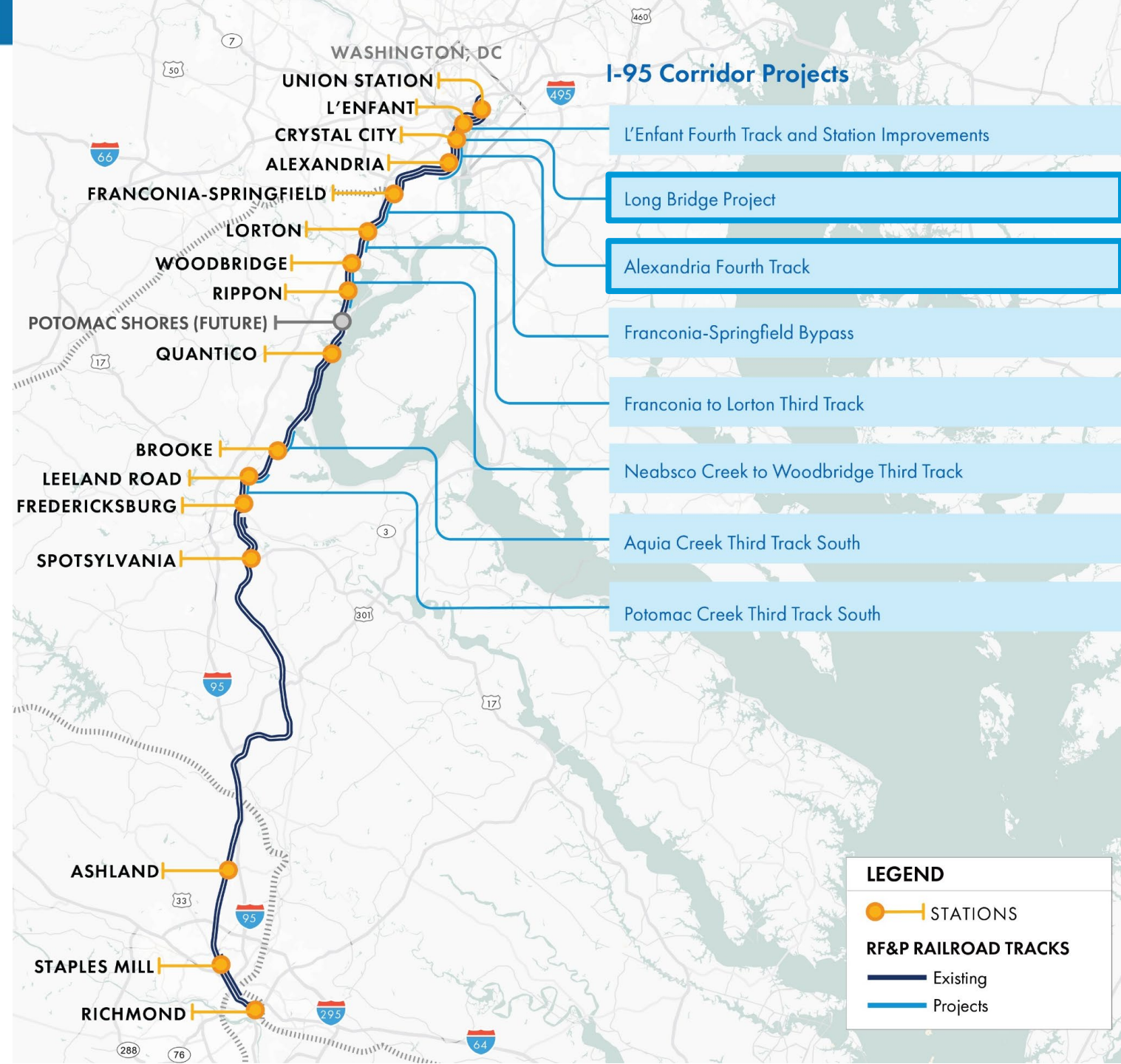
Improve **efficiency** of passenger, commuter, and freight rail services by reducing the bottleneck along the existing corridor



Improve **reliability** of passenger, commuter, and freight rail services

TRV Capital Program: DC to Richmond

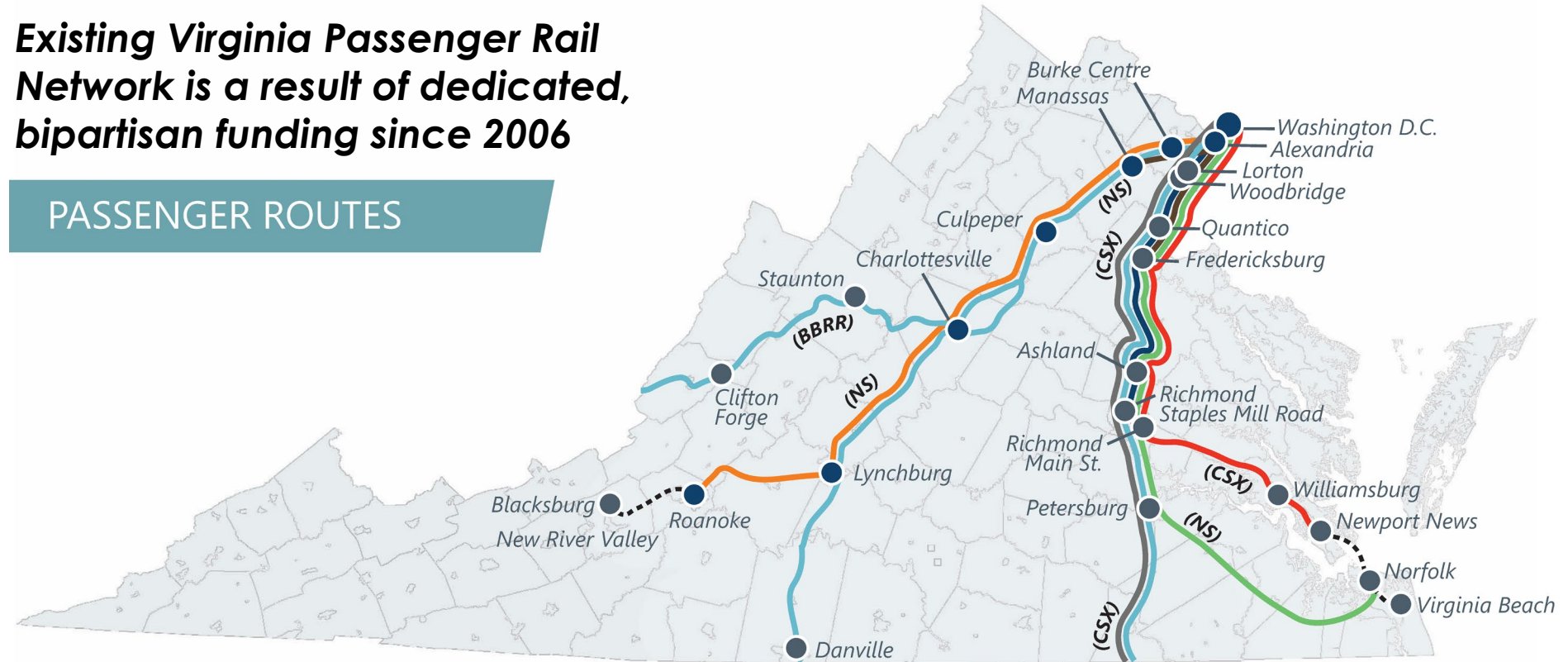
- **11 projects** unlock new passenger rail service and set the stage for future service expansion
- **Two new Amtrak** and **three new VRE roundtrips** planned, including late night & weekend service
- **Future capacity** for an **additional three new Amtrak roundtrips** and **two additional VRE**



Virginia Passenger Rail Network 2025

Existing Virginia Passenger Rail Network is a result of dedicated, bipartisan funding since 2006

PASSENGER ROUTES



Virginia State-Supported Services

- Washington-Roanoke (Route 46)
- Washington-Newport News (Route 47)
- Washington-Norfolk (Route 50)
- Washington-Richmond (Route 51)

Host Railroads

- CSX - CSX Transportation
- NS - Norfolk Southern
- BBRR - Buckingham Branch
- Passenger Station

Other Services

- Other Amtrak State-Supported
- Amtrak Long-Distance
- VRE Commuter Rail
- Thruway Bus

Four State-Supported Amtrak Routes:

Eight daily roundtrips

- Roanoke: 2
- Richmond: 1
- Newport News: 2
- Norfolk: 3

Five Amtrak Long-Distance Roundtrips

One NC State-Supported Roundtrip

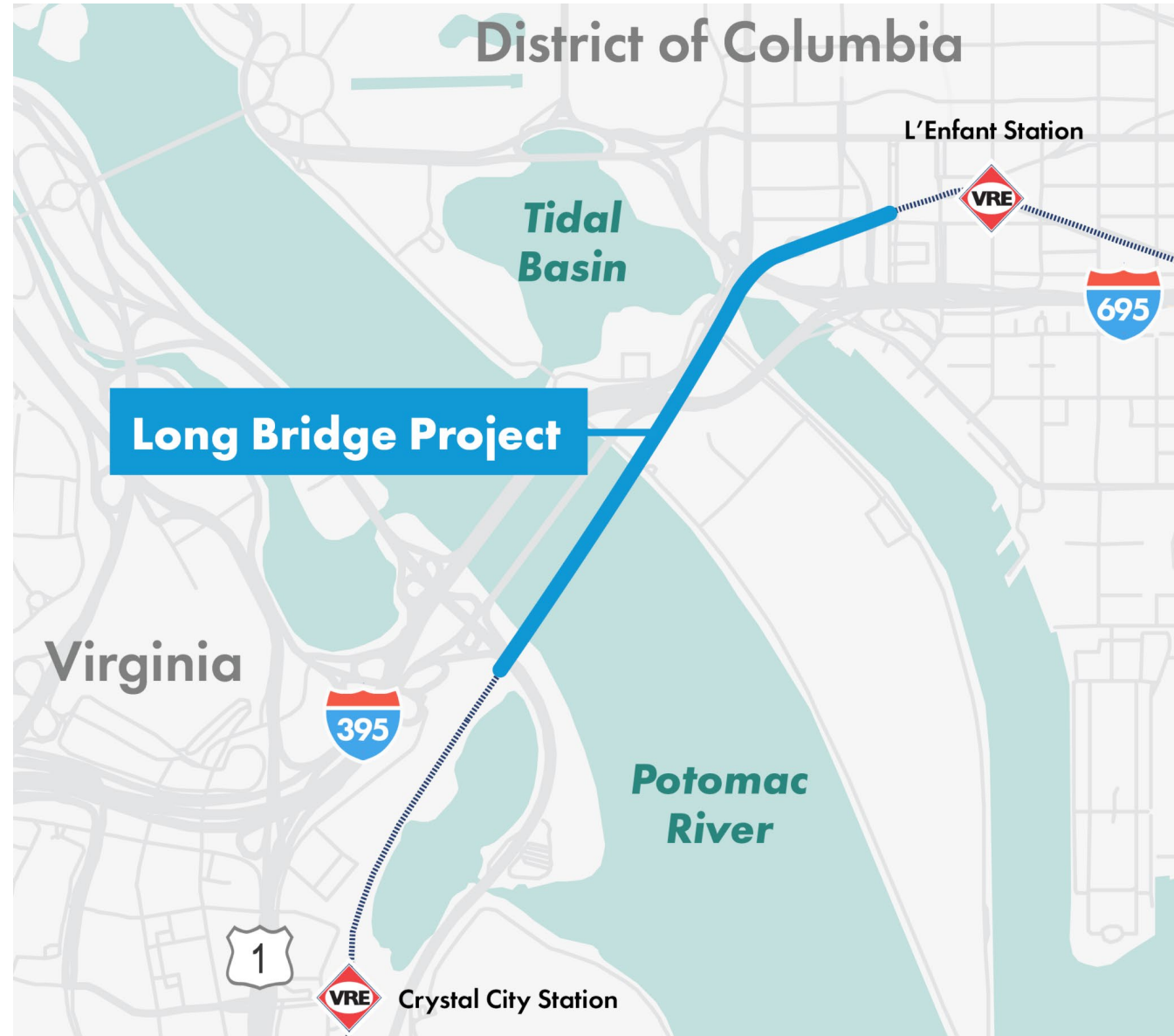
Two Virginia Railway Express (VRE) Commuter Routes:

16 daily roundtrips

- Manassas: 8
- Fredericksburg: 8

Long Bridge Project Overview

- The existing two-track rail bridge is owned and operated by CSXT and operates at 98% capacity with nearly 80 CSXT, Amtrak, and VRE trains crossing daily
- The existing bridge will remain and continue to be owned/operated by CSXT
- The new Long Bridge will add two additional tracks, doubling rail capacity
- The 1.8-mile project corridor includes five rail bridges and two pedestrian bridges



North and South Packages



South Package

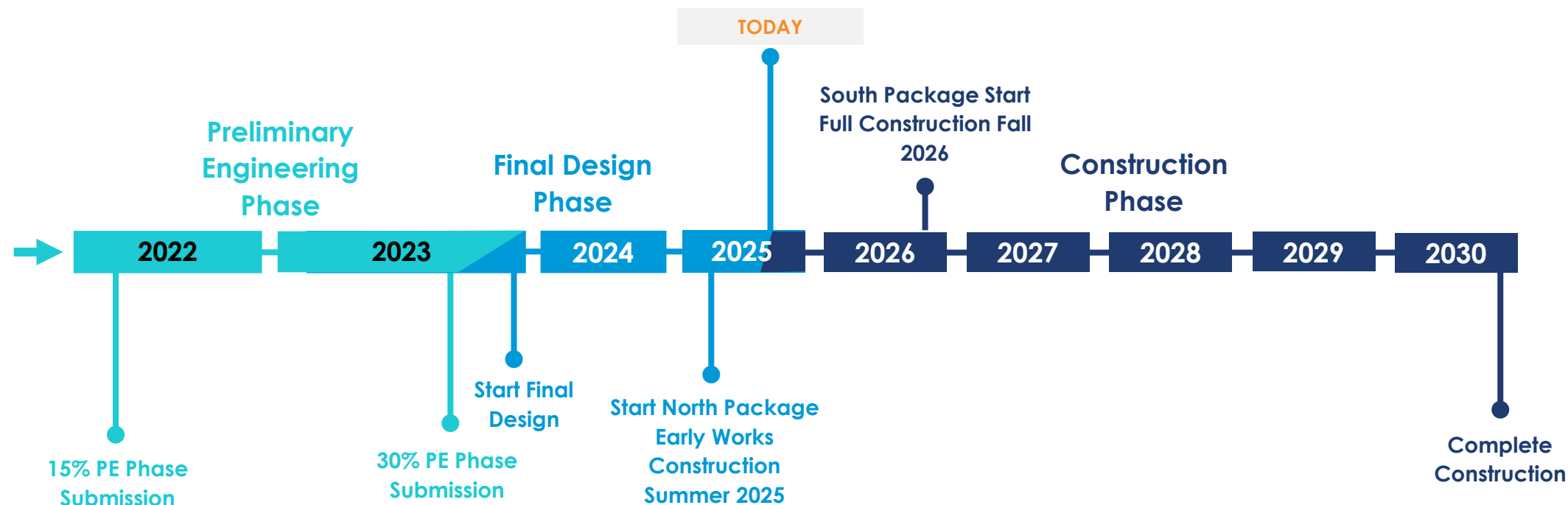
- Constructs a rail bridge and bike/ped bridge over the George Washington Memorial Parkway & Potomac River
- Construction estimated to begin mid-2026

North Package

- Constructs new bridges in the District north of the Potomac River, as well as retaining walls, embankments, ground improvements & crash walls
- Early works construction packages to begin Spring/ Summer 2025

Design & Construction Timeline

Combined North and South Packages



Design & Construction Animation



What is Happening 2025 - Construction Activities

Completed activities

- Pre-construction borings in the river and in Virginia
- Site surveys

Ongoing & future activities

- Tree and brush clearing
- Test piles
- Bulkhead and river access points in Virginia and DC

River boring work:
<https://youtu.be/GB4PciPSIKg?si=k1yhq7ktVznFzsDQ>

River Boring Work



River Boring Work



River Boring Work



What is Happening 2025 - Construction Activities

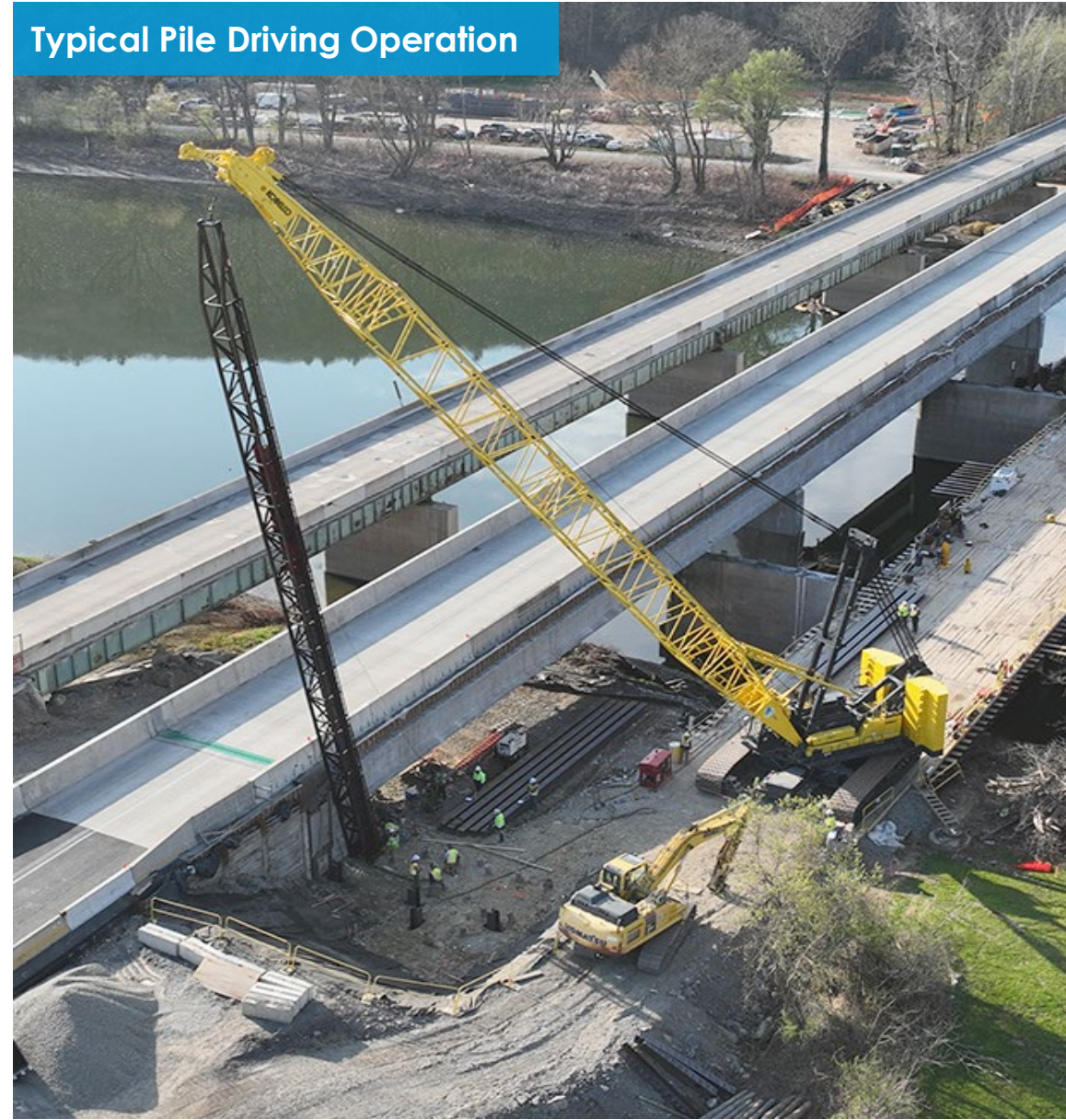
Test Pile Program Potomac River Crossings

- Four test piles driven at bridge foundation points in Arlington, the river, and DC
- Verify engineering calculations prior to placing larger piles used for bridge foundations
- You may hear pile driving

Statnamic Load Test

- Method of testing that simulates weight of the new bridge with a train, verifying the capacity of the foundation pile
- A downward force is applied to the pile head over a very short duration using the controlled combustion of a fast-burning fuel within a piston
- One Statnamic test per test pile
- You may hear what sounds like an explosion during test

Typical Pile Driving Operation



Boating Community Travel Impacts

Monthly Mariner's Notices distributed

Potomac River

- **Complete:** Geotechnical borings in the river
- **Fall 2025:** Test piles in the river (permits pending)
- **The navigation channel will remain open throughout construction**

Washington Channel

- **Late Fall 2025:** Trestle work
- **Washington Marina and parking lot will remain operational during construction**
- Buoys to guide marine traffic
- Washington Channel as a No Wake Zone



Stakeholder Coordination

- Traffic Advisories
- Mariner's Notices
- Continued Monthly/Weekly Stakeholder Meetings
- Public Notifications – social media, project newsletter, project e-blasts



Major Topics:

- Travel flow (auto, rail, bike, pedestrian, boat)
- Traffic analysis, lighting, signals
- Noise & vibration
- Structures (crashwalls, bridges, retaining walls)
- Roadway, drainage & landscaping
- Utilities
- Inspections & permits
- Adjacent projects and special events
- Public outreach



2025 Summer/Fall Public Outreach



Digital Display Long Bridge
Aquatic Center



Tabling in the
Community



Door-to-Door Outreach –
Boating Community
July 28
August 8
August 13



Traffic & Marine Advisory
Distributions (VDOT, NPS, DDOT)



Informational Videos
River Boring Video
Bridge Construction Video



Newsletter #2
October



Farmer's Market
August 9, & 18

Wharf Movie Night
August 21

Arena Stage
Community Day
August 2

Hancock Park
September 10
& October 8

Southwest Fall Family
Fest October 12

Wharf DC Fall Activities

Mt. Vernon Trail
Tabling



Long Bridge Project Contact Info



Announcements on Long Bridge website:
www.LongBridgeProject.com



E-mail subscriber notices (Sign up to receive)
info@longbridgeproject.com



VPRA Social Media Posts
Facebook, Instagram, X, LinkedIn, YouTube

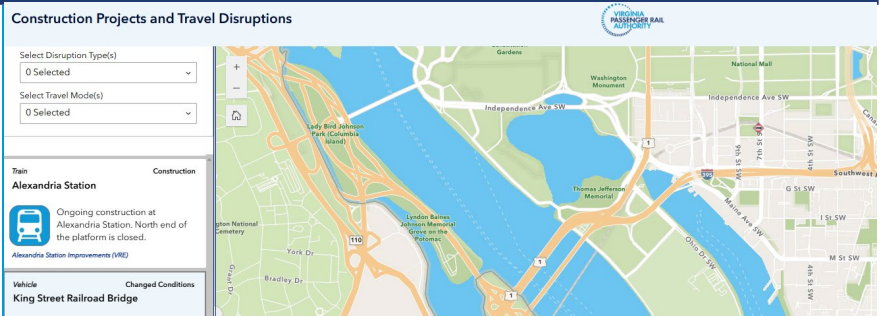


VPRA Project Hotline
(202) 769-1808

Portable Message Signs On-Site



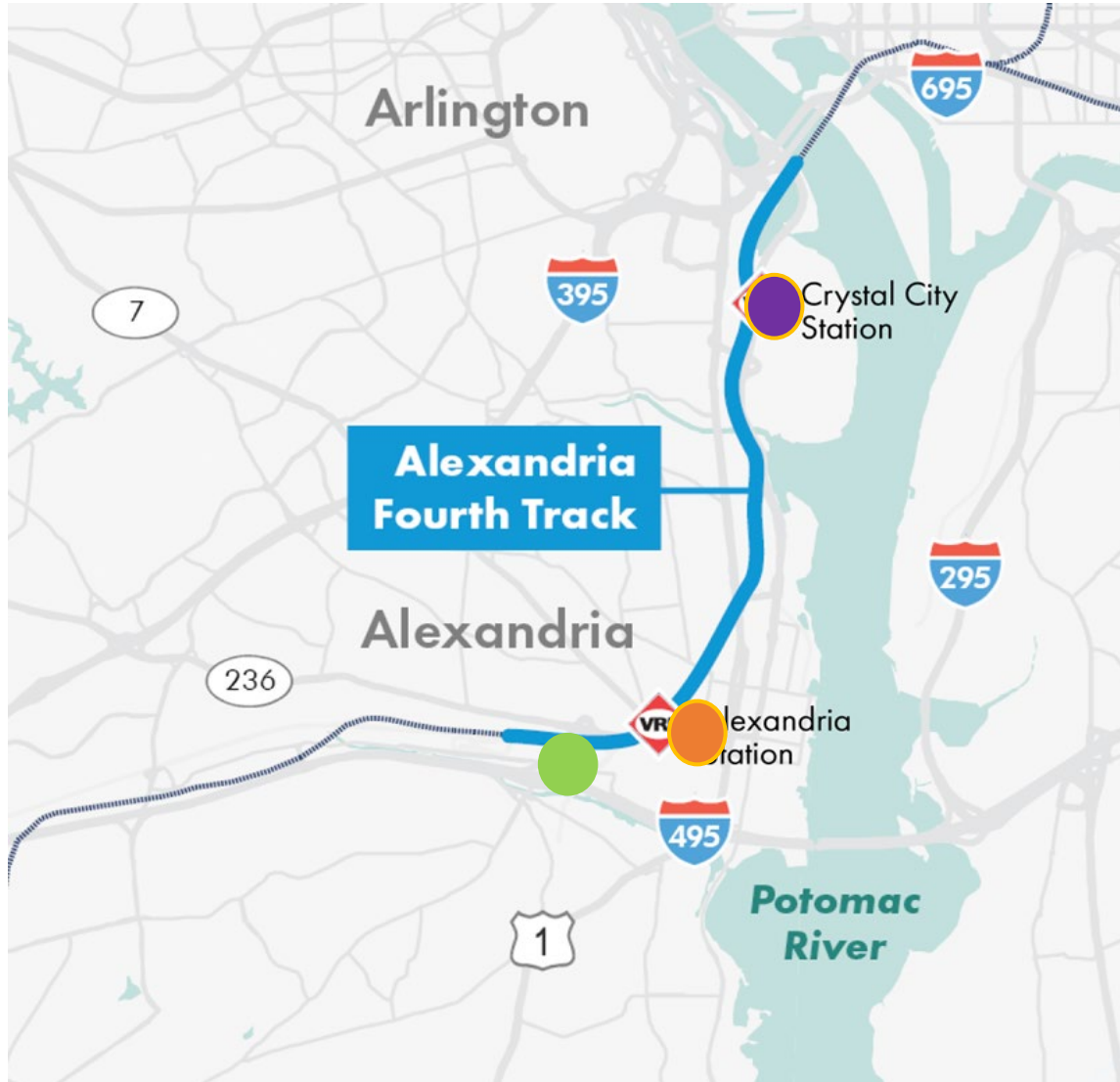
VPRA Construction Disruptions Map



Traffic Advisories
Press Releases to News Outlets
Community Meetings / Events
Door-to-Door Outreach



Alexandria Fourth Track Project



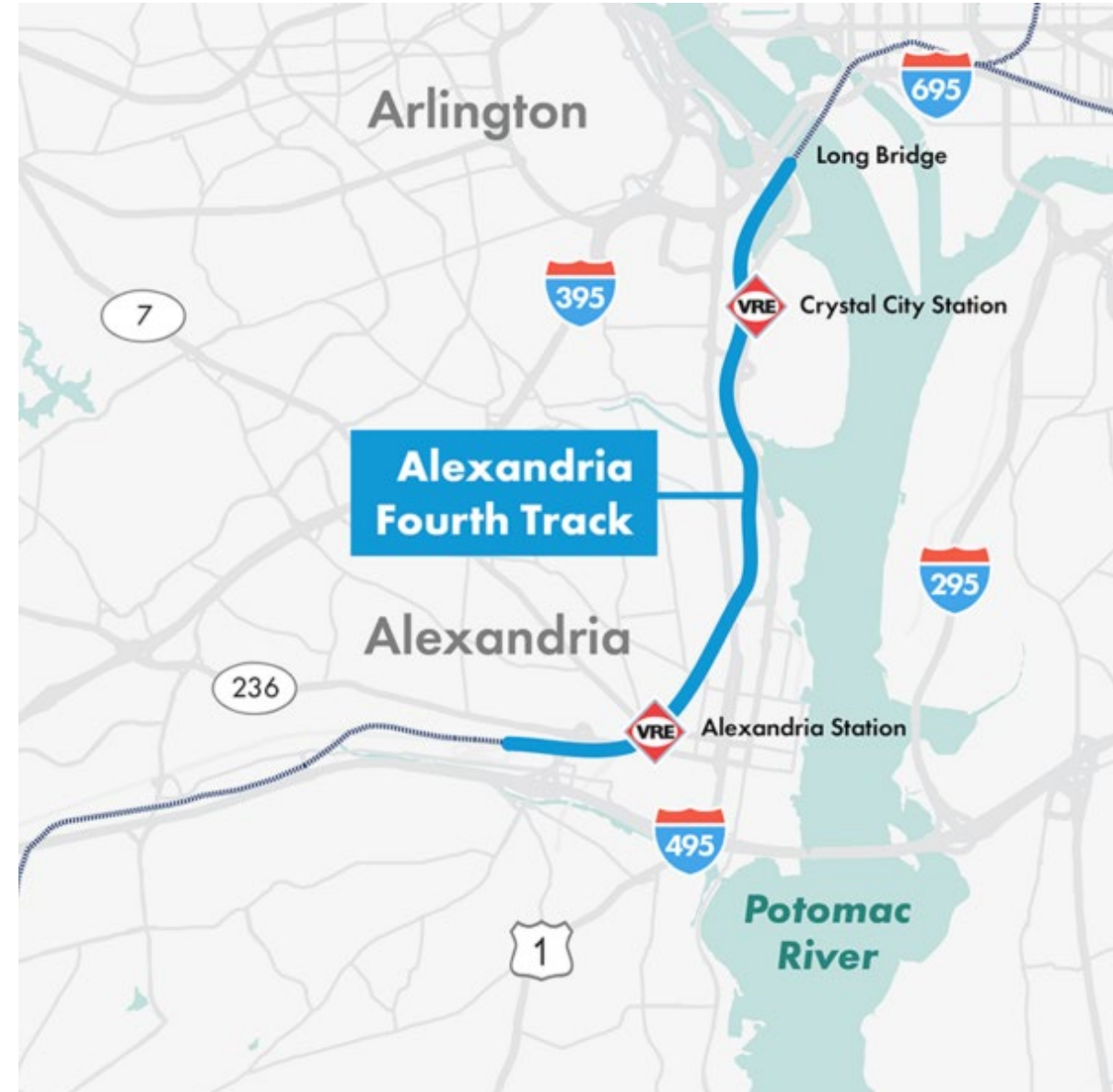
Six miles of 4th track from Long Bridge Park to Business Center Drive area

Related sub projects:

- Crystal City Station
- King Street area projects
 - Alexandria Station
 - King and Commonwealth Bridges
 - City Streetscape Improvements (Planning Stage)
- Telegraph Tunnel
 - Pedestrian mitigation improvements

Alexandria Fourth Track Overview

- Approximately six miles of new track between Long Bridge and Alexandria VRE Station
- Adds a fourth track within existing right-of-way between Arlington and Alexandria
- Increases rail capacity and addresses current bottleneck that delays passenger and freight trains traveling north into DC, where five tracks converge into three
- Construction to begin Q4 2025



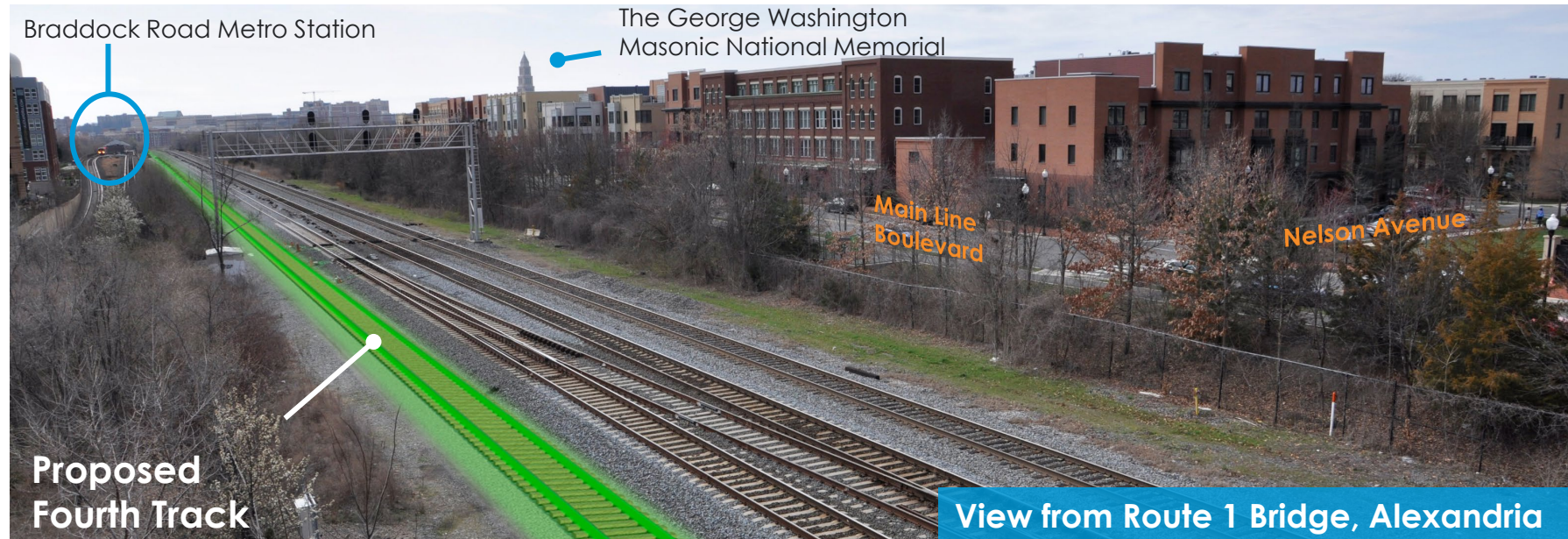
What is Happening 2025 – Alexandria Fourth Track

Completed activities

- Invitation to Bid

Ongoing & future activities (near-term)

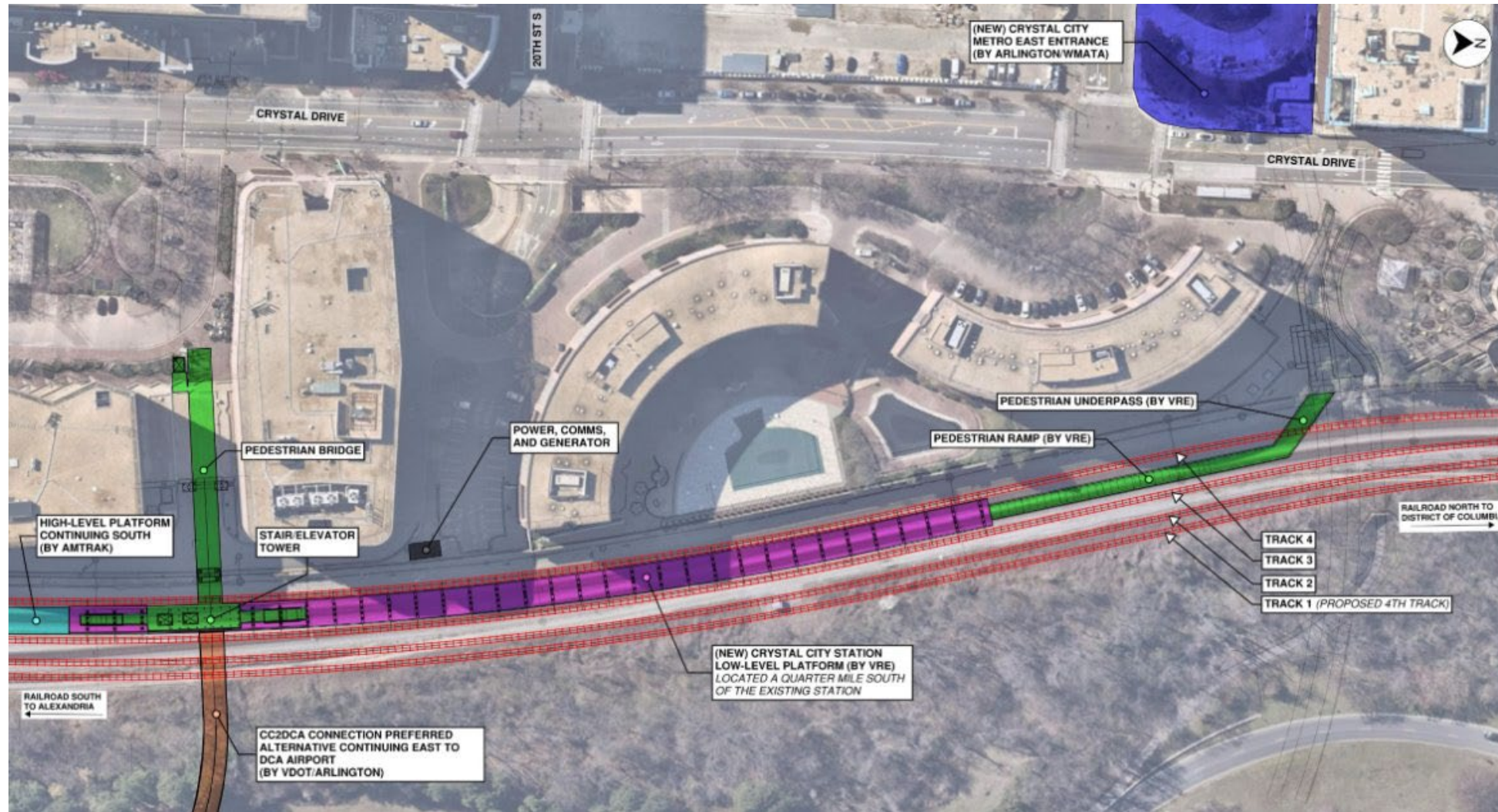
- Contractor Selection
- Construction Start: Q4 2025
- Trackwork between Slaters Lane and Long Bridge: Q1 2026



Alexandria Fourth Track – Project Timeline



Crystal City Station Project Overview

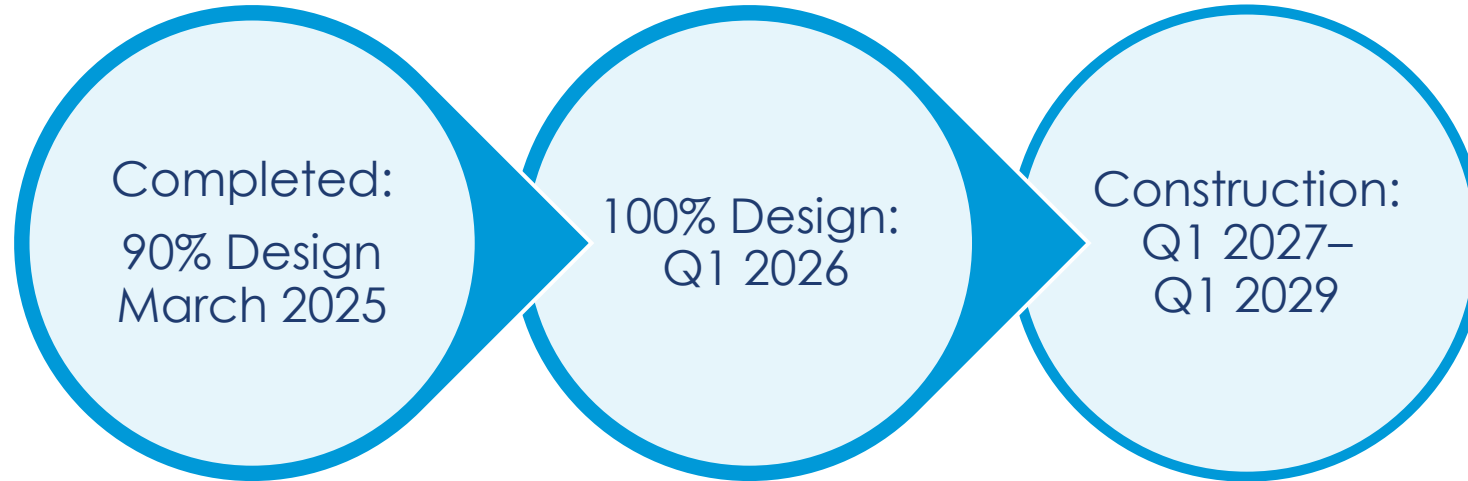


Crystal City Station Improvements

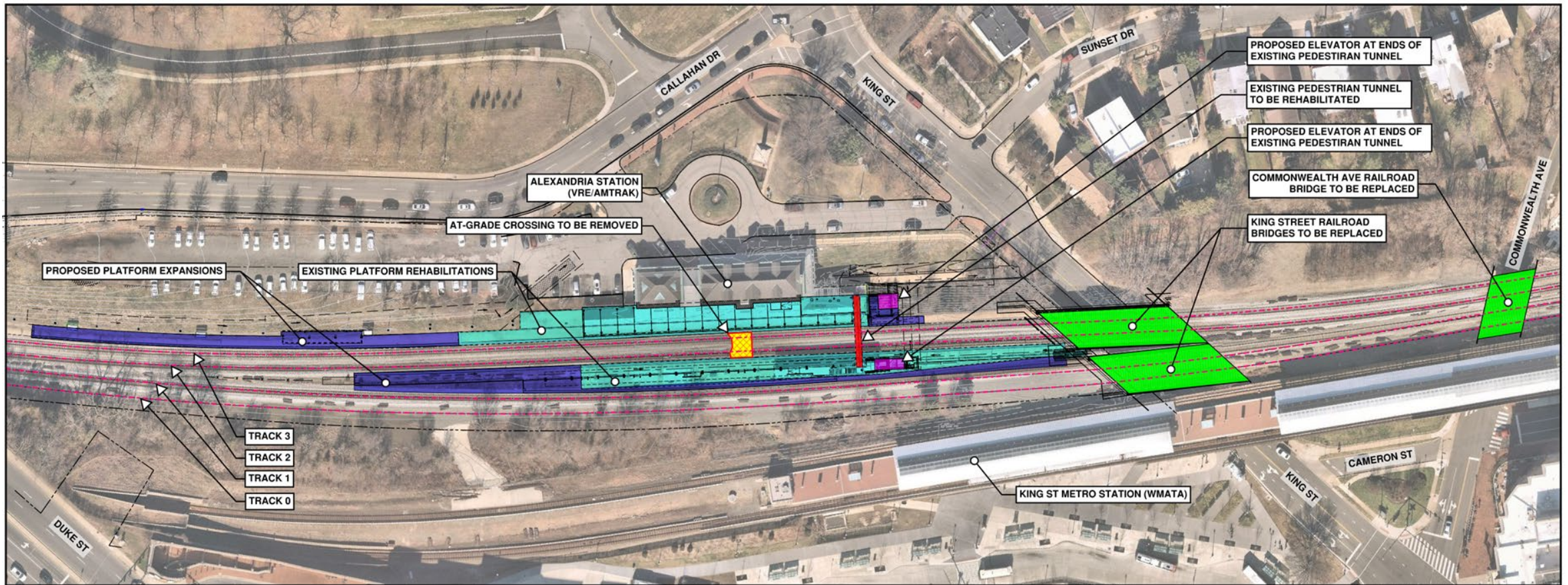
- Station with island platform to accommodate 8-car train sets
 - Island platform will enable simultaneous boarding and improve operational flexibility
 - Longer platforms allow all train car doors to open, improving operational efficiency
- Entrances provide enhanced intermodal transit connectivity
 - North entrance reduces distance to new Metro entrance and Mt Vernon Trail Connector
 - South entrance accommodates future pedestrian/bicycle connection between the station and airport



Crystal City Station Improvements Timeline

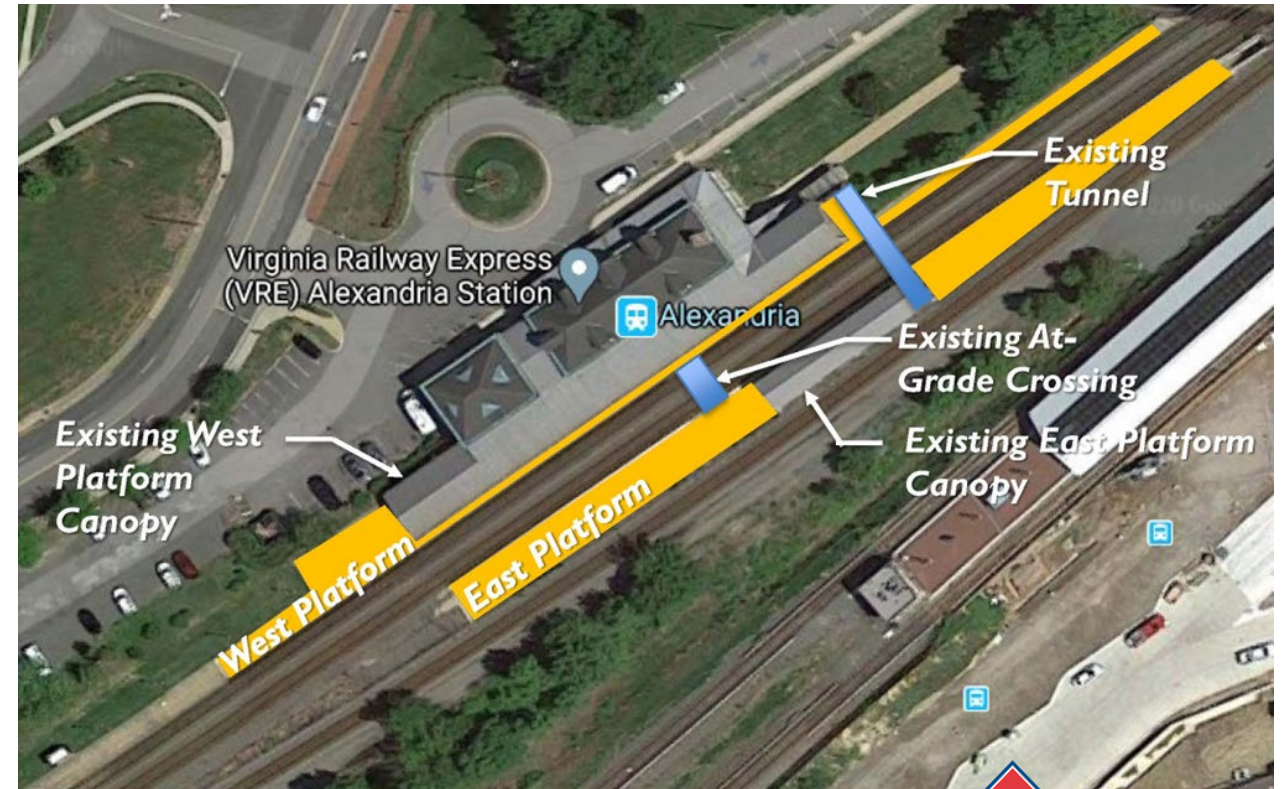


Alexandria Station and King Street and Commonwealth Avenue Bridge Replacement Project Overview



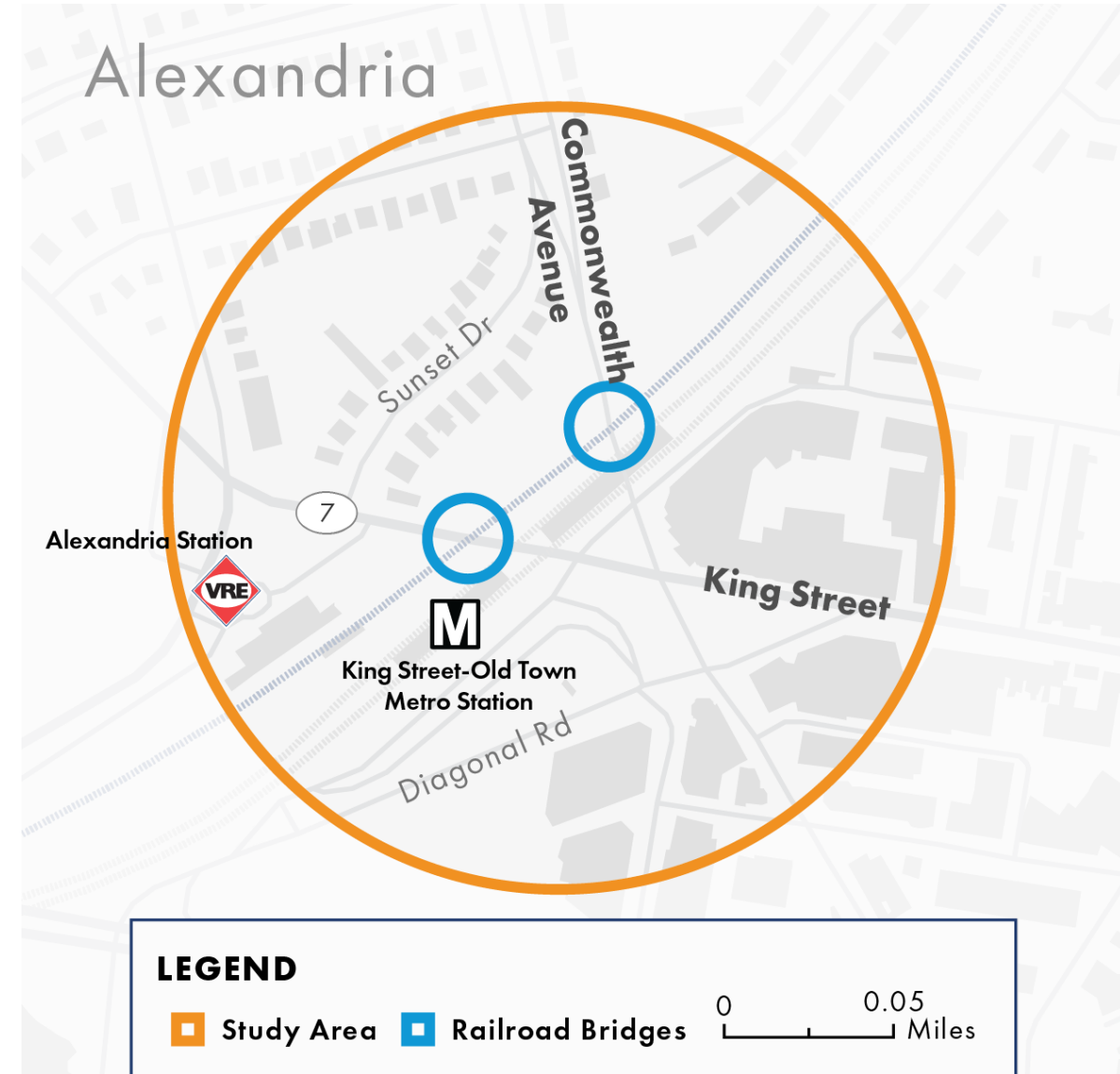
Alexandria Station Improvements

- VRE designed improvements to the existing Alexandria Station
 - Remove At-Grade Crossing
 - Improve Track / Platform Interface
 - Improve Track 1 Boarding



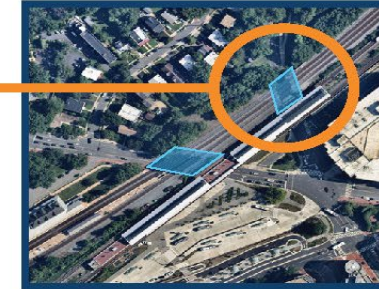
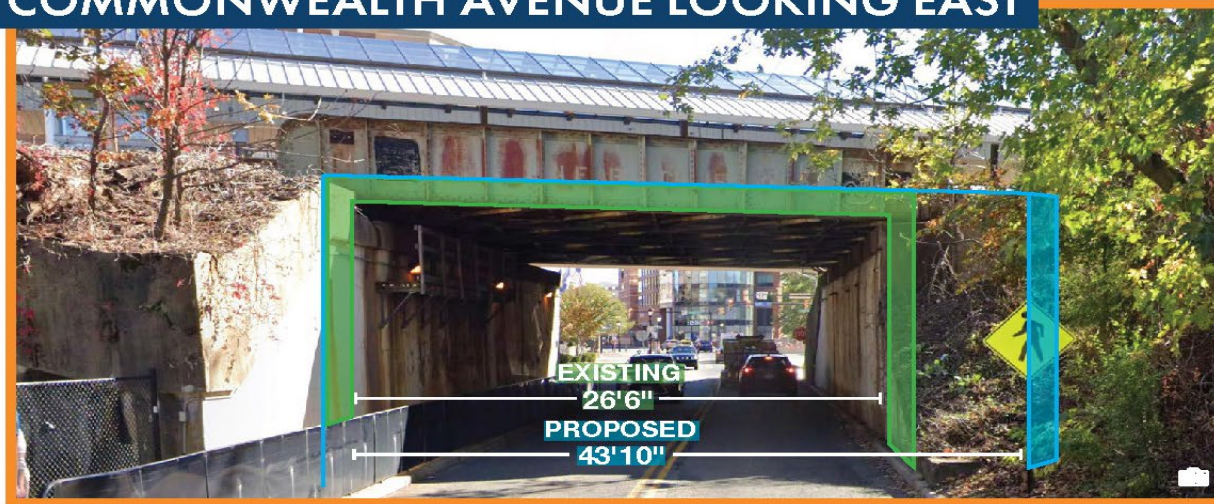
King and Commonwealth Replacement Rail Bridges

- VPRA and CSXT designed two new replacement rail bridges to span King Street and Commonwealth Avenue near Alexandria station
- To be constructed by VRE as part of the Alexandria Fourth Track and Station Improvements Project
- Will reduce maintenance, minimize service interruptions, and upgrade bridges to meet current standards
- Enhances safety for pedestrians and motorists traveling underneath the bridge

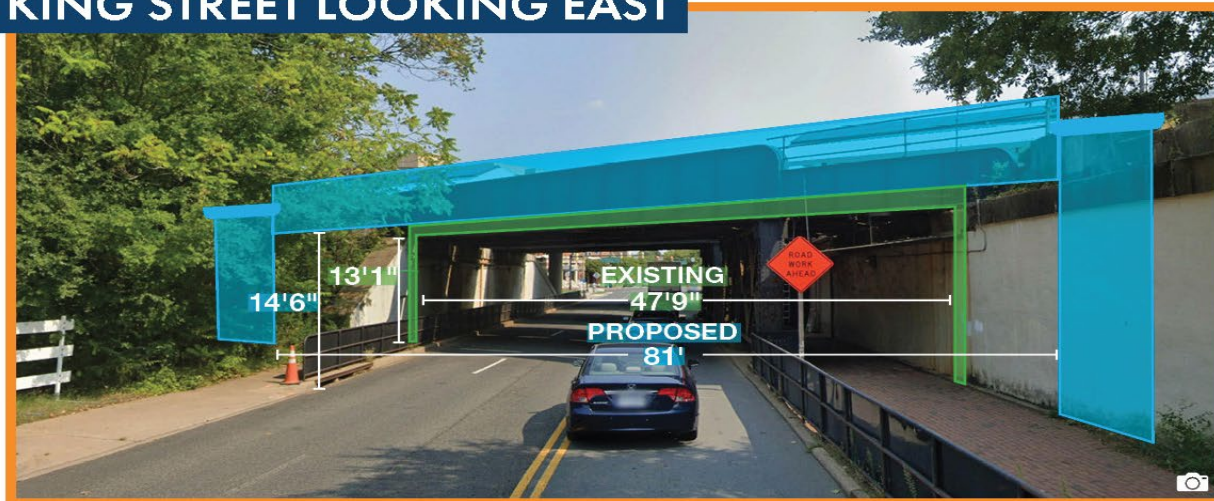


King and Commonwealth

COMMONWEALTH AVENUE LOOKING EAST



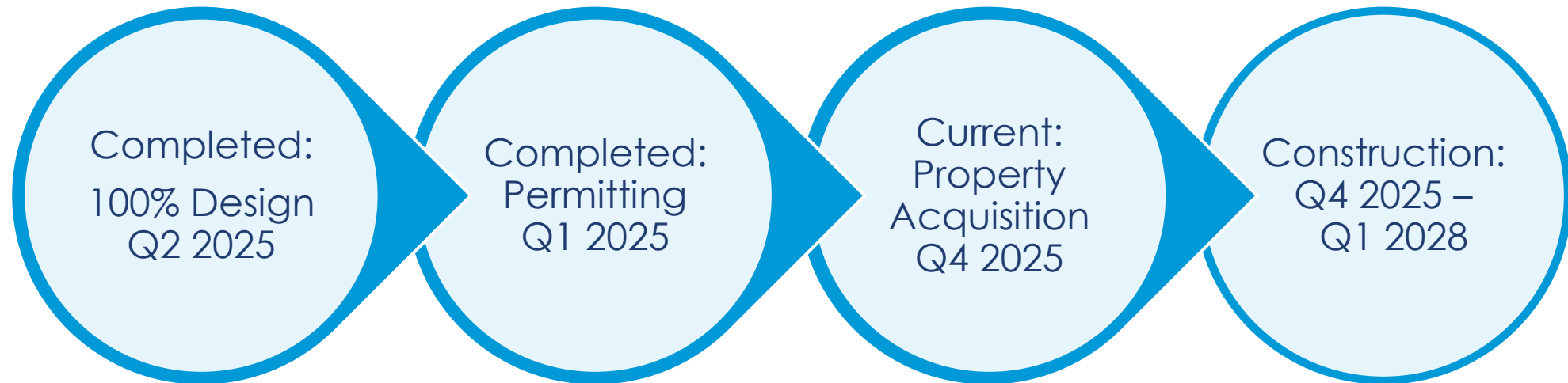
KING STREET LOOKING EAST



LEGEND	
	Existing
	Proposed



Alexandria Station and King and Commonwealth Project Timeline



What is Happening 2025

– Alexandria Station and King and Commonwealth

Completed activities

- Design Completed
- Invitation for Bid issued June 27, 2025
- Bids received September 3, 2025

Next steps

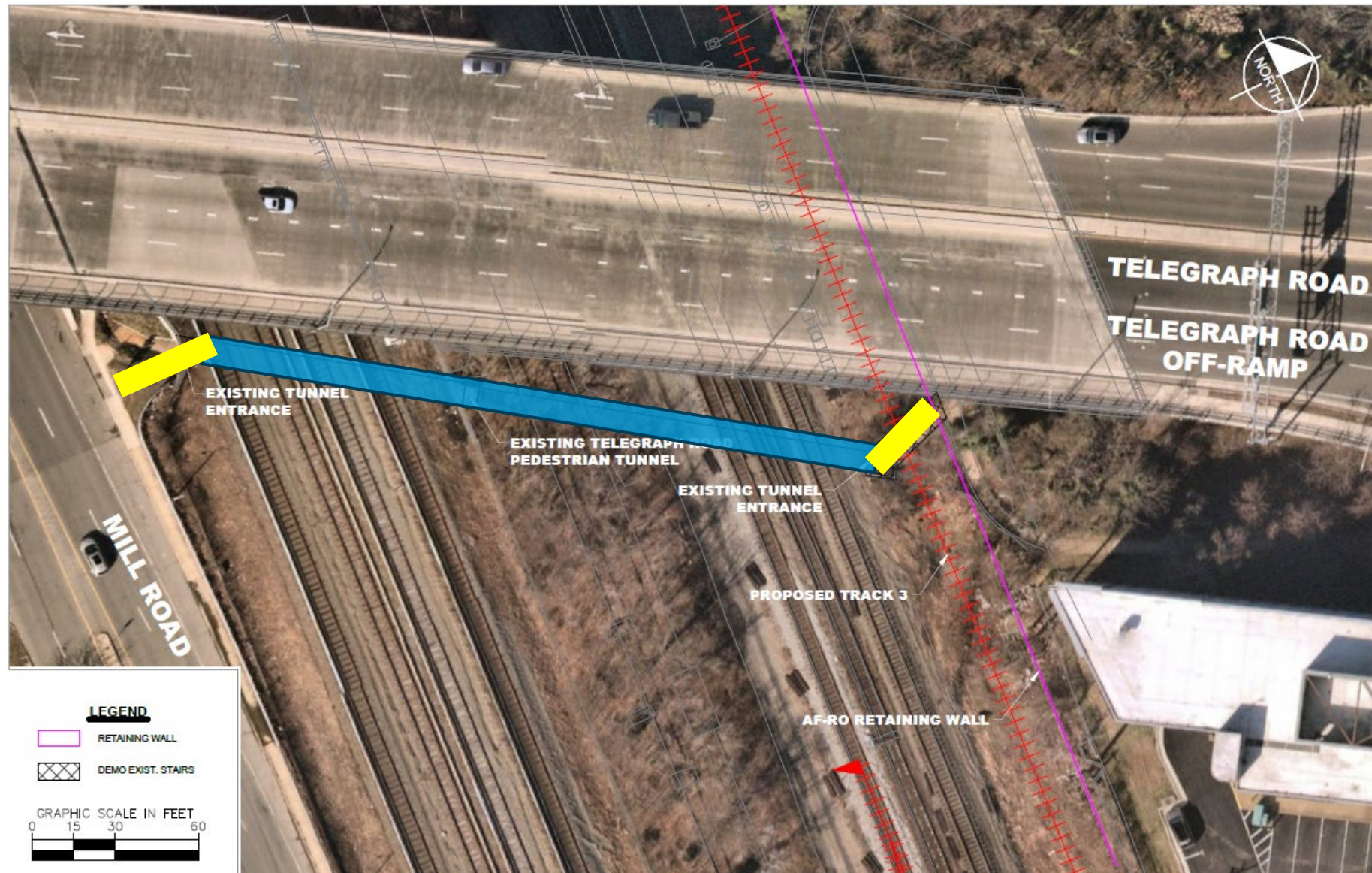
- Complete Analysis of Bids and Award Contract
- Contractor Selection (Q4 2025)
- Construction Start (Q4 2025)



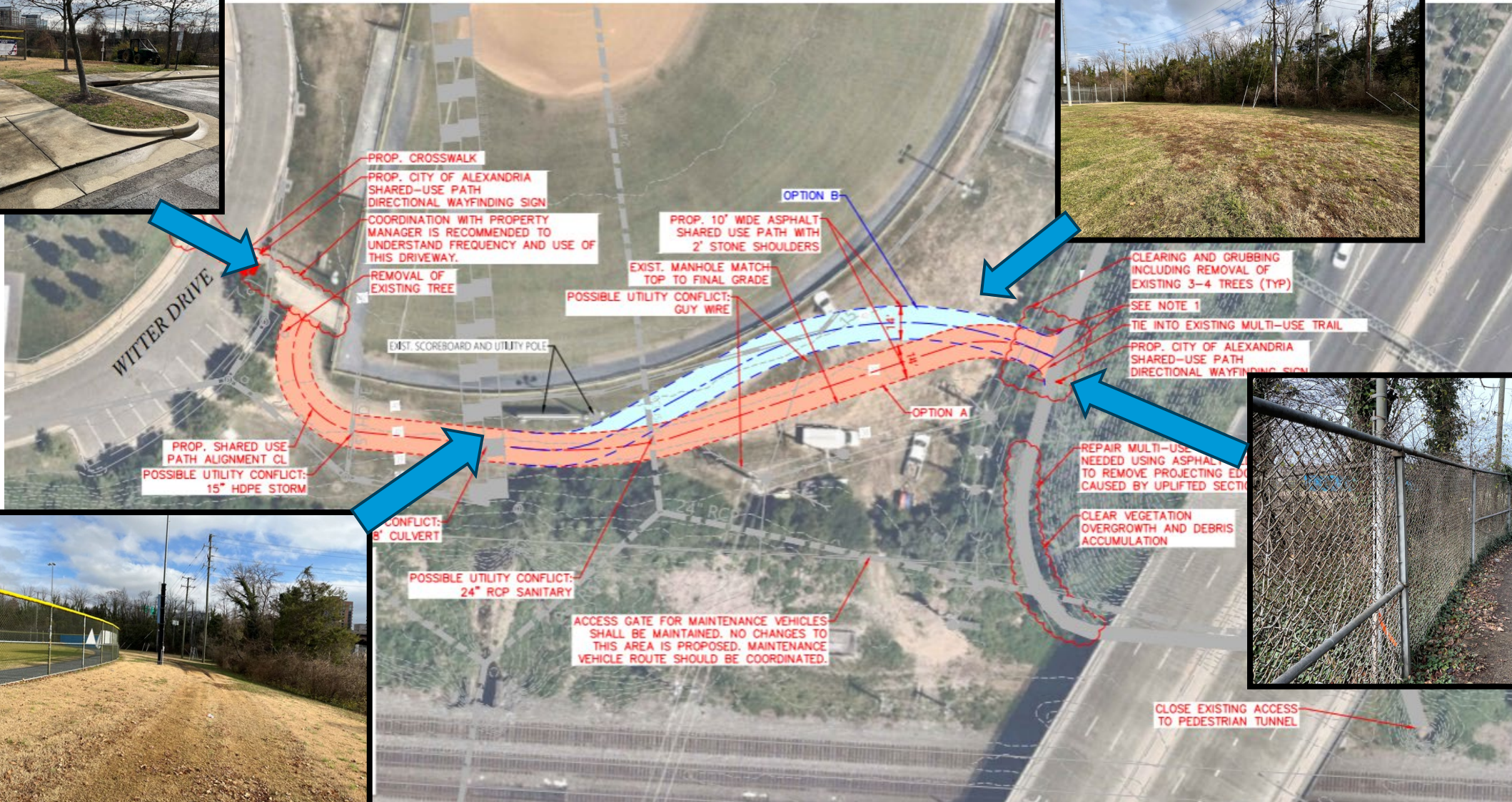
Telegraph Tunnel Location



Fourth Track and Telegraph Road Tunnel



Witter Park Shared-Use Path Connector



What is Happening 2025 --New Witter Park Path

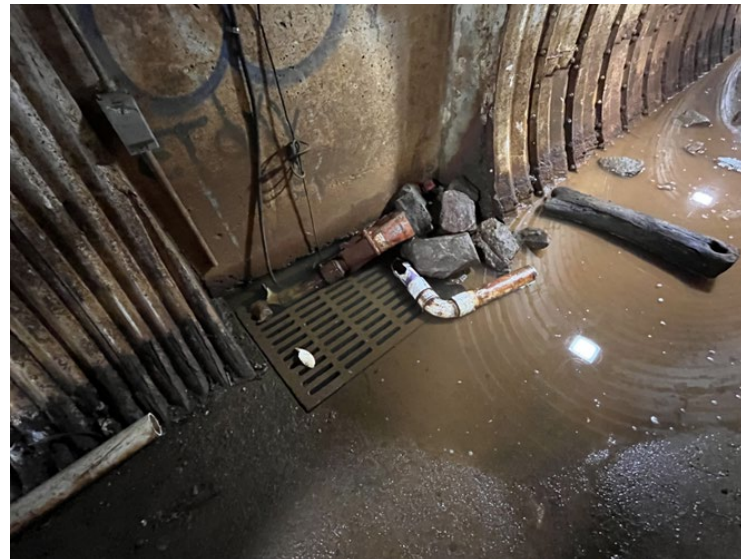
Completed activities

- Preliminary design and city review/comments
- 100% Design Complete



Next steps

- City of Alexandria Site Plan Amendment and plan approval
- Construction to start following city utility relocation
- Goal is to have new path in place prior to closing of tunnel



Keeping the Community Informed

- Project Hotline
- Project Fact sheets
- Traffic, Boating, and Pedestrian/Bike Advisories
- Signage
- Multi-media outreach
- Community Meetings and Events
- Community Advisory Group (CAG)



VPRA Long Bridge Project **CONSTRUCTION NOTICE**
Upcoming Construction Activity

The Virginia Passenger Rail Authority (VPRA) is an independent authority established by the Virginia General Assembly in 2020 to promote, sustain, and expand passenger and commuter rail services.

Our mission is to provide integrated, affordable, and convenient rail travel options for all. As part of our commitment to improving rail infrastructure, we are completing early construction activities for the Long Bridge Project. This project will add a new two-track rail road bridge alongside the existing Long Bridge across the Potomac River, increasing rail capacity and alleviating a significant bottleneck for Amtrak and Virginia Rail way Express. The 1.8-mile project includes five new rail bridges and two new pedestrian/bicycle bridges.

Upcoming Construction
Virginia Passenger Rail Authority (VPRA), in coordination with the District Department of Transportation (DDOT), will close one right lane on Maine Avenue SW Eastbound between Ohio Drive SW and the ramp to I-395 Northbound to support construction activities. Construction activity is scheduled to begin on February 18, 2025 (weather permitting) and will continue through February 20, 2025.

Crews will work from 9:30 a.m. to 3:30 p.m. There will be a single right lane closure on Maine Avenue SW Eastbound and a closure of the pedestrian bridge over Maine Avenue SW, which connects the Wharf to the Potomac office buildings and the Salomon Center Washington DC hotel.

Posted signage and detours will be provided to assist motorists and pedestrians as they travel through the area. This work will not impact parking.

To ensure the safety of our crews, motorists and pedestrians are asked to stay clear of work zones and follow posted signage and detours.

Stay Connected! For more information and to stay updated on traffic impacts and construction progress, please visit VPRApassengerRailAuthority.org. If you have questions, contact us at info@longbridgeproject.com.

Service Impacts – January 2026

Objective: develop a service plan to facilitate a ~five-hour outage at Long Bridge for up to five years starting **January 2026**.

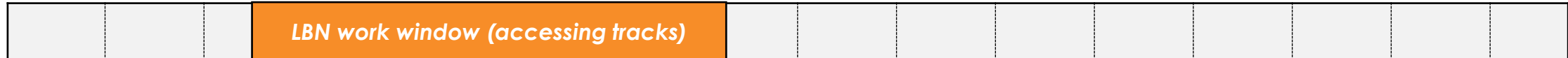
- Maintain maximum service and optimize performance for Amtrak, VRE, and CSX
- Maximize work window productivity
- Utilize the work window opportunity created by Long Bridge – North for all projects when feasible.

Constraints:

- **DC Noise and Vibration laws restrict significant work to daytime hours (Mon – Sat) for the Long Bridge – North project.**
- VRE “AM Peak” and “PM Peak” is the highest ridership times of day.
- Significant work on the NEC and at WAS also requires service adjustment considerations.
- WAS is most congested in the afternoon
- Service Impacts affect Amtrak Virginia, Amtrak Long Distance, Carolinian, and VRE (FBG and Manassas Line)



6 am 7 am 8 am 9 am 10 am 11 am 12 pm 1 pm 2 pm 3 pm 4 pm 5 pm 6 pm 7 pm 8 pm 9 pm 10 pm



Service Impacts

VRE Temporary Service Adjustments:

- **All VRE trains will be in service** – some trains will start/stop at Alexandria instead of Union Station.
- **Amtrak Step-Up Program** – gives VRE multi-ride ticketholders more options to travel in/out of Union Station
- **Temporary service adjustments** – may be refined during the project's construction

Amtrak Virginia Temporary Service Adjustments:

- **4 daily round-trip trains** (2 to Norfolk and 2 to Newport News)
- **2 daily express buses to and from Hampton Roads**, giving Newport News an additional connection to Washington, DC
- **Total service will equal 6 combined rail + bus roundtrips** (slightly more than the current 5 all-rail roundtrips)
- Departure and arrival times will shift slightly, but **corridor connectivity remains**

For more information:

VPRA

<https://vapassengerrailauthority.org/plan-my-trip/service-guide/>

VRE

<https://www.vre.org/plan-a-trip/>
<https://www.vre.org/service/transit-benefits/>

How to stay connected



Visit project website:
VAPassengerRailAuthority.org



Sign up for email updates:
vapassengerrailauthority.org/contact



Contact us:
804.303.8700 | contactus@vpra.virginia.gov



VAPassengerRail



@VAPassengerRail



@VAPassengerRail



Virginia-Passenger-Rail-Authority



@VirginiaPassengerRailAuthority



For more information about VRE projects including:



- Crystal City Station
- Alexandria Station Improvements
- King and Commonwealth Replacement Bridges

Please visit:

<https://www.vre.org/projects/details/?ProjectId=19>



Q & A

The screenshot displays a Zoom Workplace interface during a Q&A session. The main window shows a dark background with the name "erin murphy" in white text. A chat window is open on the right, titled "Prep Session: Arl-Alx CAG Mtg #1". The chat contains a message: "Messages addressed to 'meeting group chat' will also appear in the meeting group chat in Team Chat". Below this, there is a section for "Who can see your messages?" and a "To:" dropdown menu set to "Meeting group chat". The chat input field says "Type your question here in the chat".

At the bottom of the Zoom window, a toolbar is visible with icons for Audio, Video, Participants, Chat, React, and More. A dashed blue box highlights the "React" menu, which is open and shows various reaction options. The "React" menu includes a "Send with effect" section with icons for a heart, rocket, thumbs up, crying face, party, and heart. Below this is a "Reactions" section with icons for clapping hands, thumbs up, heart, crying face, surprised face, and party. At the bottom of the "React" menu are buttons for "Raise hand" and "Be right back".

Transforming Rail in Virginia (TRV)



Making generational investments to improve the future of rail transportation

- Partnering with Amtrak, CSXT, Norfolk Southern, Virginia Railway Express (VRE)
- Developing capital projects and acquiring railroad right-of-way
- Increasing rail capacity
- Reworking passenger and freight operations to improve reliability and increase rail service
- Delivering high-performance passenger rail
- Connecting our communities
- Increasing economic growth