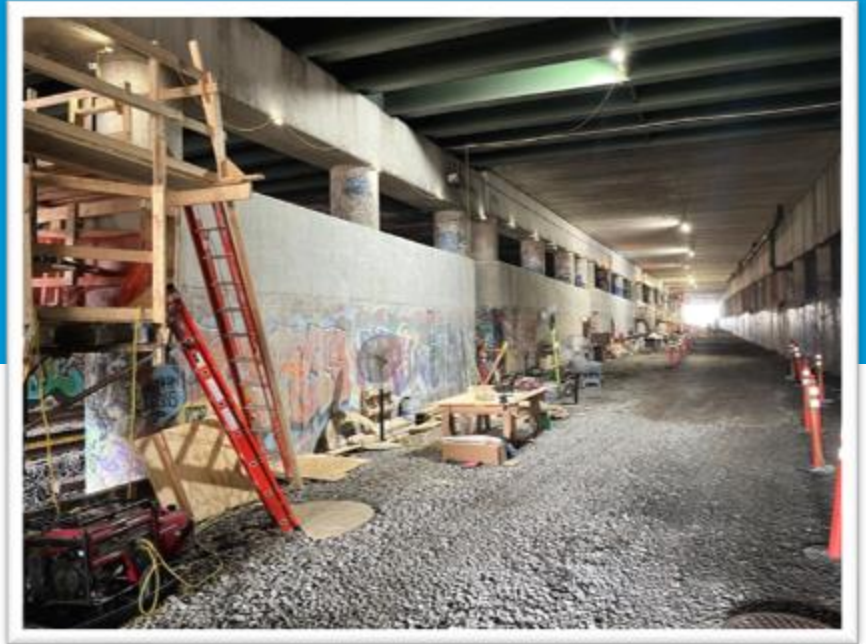









Construction Updates Report

Activity-to-date thru September 2025



Capital Projects Under Construction

Project	Project Lead	Estimated Completion	Budget
Long Bridge North Package*	 VPRA	2030	\$1.647 B
Long Bridge South Package*	 VPRA	2030	\$1.013 B
Franconia-Springfield Bypass*	 VPRA	2029	\$532 M
Franconia to Lorton Third Track*	 CSX	2028	\$275 M
New River Valley Passenger Rail Project	 NS NORFOLK SOUTHERN	2027	\$73 M

*Early Works Construction

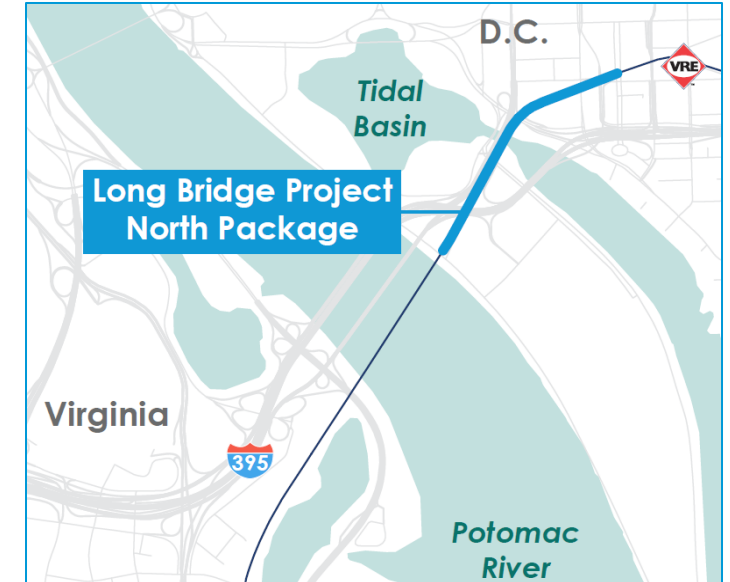




Long Bridge North Package

Long Bridge North Package

Estimated Completion	2030
Budget	\$1.647 B
VPRA's Contractor	Skanska-Flatiron Joint Venture (SFJV)



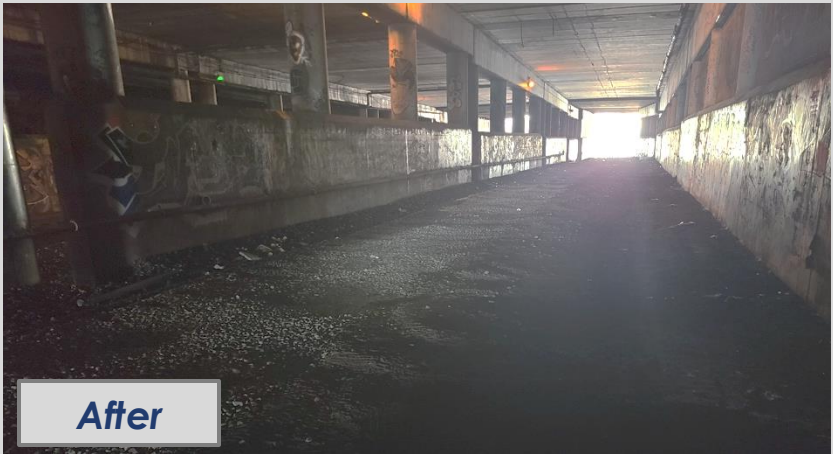
- SFJV began early works construction in April 2025.
- There are a total of 12 early works packages, which will continue into 2026.

Recently Completed	Ongoing	Upcoming
<ul style="list-style-type: none"> • Out-of-service track removal • Demonstration drilled shafts • Demonstration micropiles • Traffic shift/closure of 14th St Access Ramp at Maine Ave SW 	<ul style="list-style-type: none"> • Crash walls strengthening • Select tree removal • CSX duct bank relocation 	<ul style="list-style-type: none"> • Installation of additional construction laydown areas in East Potomac Park • Utility relocation in Maiden Ln and Maine Ave

Recently Completed Activities



Out-of-service track was removed in May to enable construction on the crash walls.



Demonstration drilled shafts and micropiles were conducted this summer to gain a better understanding of the foundations needed to support future bridges and retaining walls.

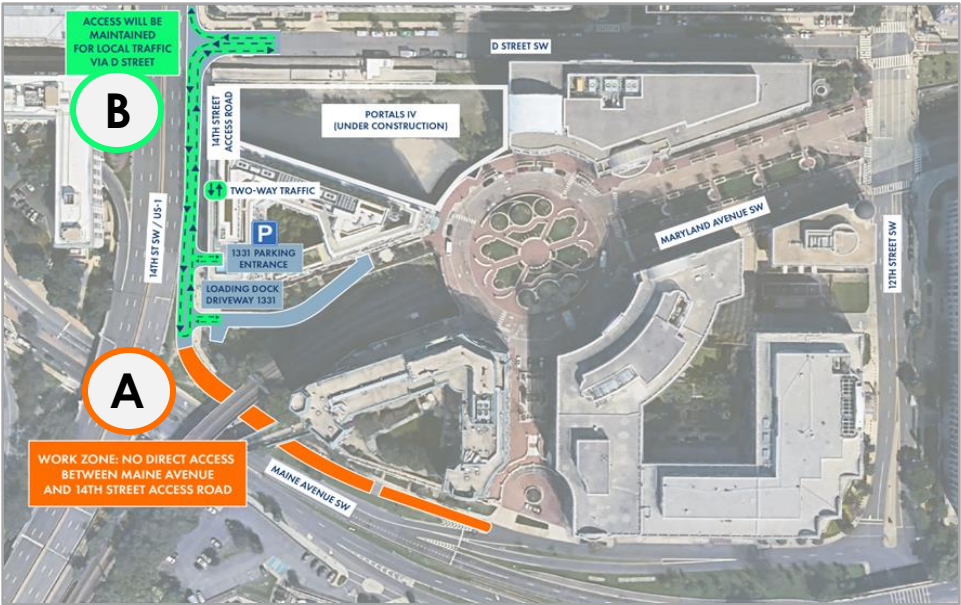


05/06/2025 12:00PM
900A Ohio Dr SW, Washington, DC, 20024

Recently Completed Activities

The first traffic shifts for Long Bridge North Package were implemented in August.

- A** The access road from Maine Ave SW to 14th St was closed to create a laydown area for construction activities.
- B** A section of the 14th St access road was converted to two-way traffic for access to residences and businesses.
- C** One out of three westbound lanes on Maine Ave SW was closed to traffic.



Ongoing

Following the removal of out-of-service track, work began to strengthen the crash walls that protect the piers supporting overhead bridges.

Crash walls D and F are nearing completion.

Crash wall C improvements will continue into 2026.



Crash wall D concrete placement



Upon completion of the Long Bridge project, tracks will move closer to the piers, necessitating the strengthening of the crash walls protecting the piers that support Maryland Ave overhead.

Ongoing

Select tree clearing is underway in East Potomac Park to clear space for laydown areas and further construction activities.



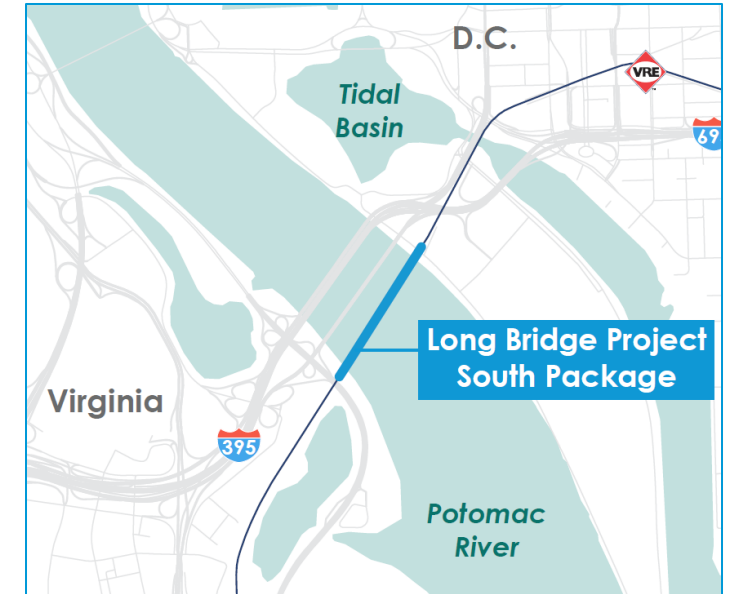


Long Bridge South Package

Long Bridge South Package

Estimated Completion	2030
Budget	\$1.013 B
VPRA's Contractor	Long Bridge Rail Partners (LBRP)

- LBRP began early works activities in June 2025.
- Scope validation period is ongoing through February 2026.



Recently Completed	Ongoing	Upcoming
<ul style="list-style-type: none"> • Utility searches • Surveying • Installing monitoring devices on existing infrastructure • Geotechnical borings in the Potomac River, East Potomac Park (DC), and George Washington Memorial Park (VA) 	<ul style="list-style-type: none"> • Scope validation period • Existing Long Bridge Survey • WMATA Bridge Survey • Permit preparation for test piles and riverbed investigations 	<ul style="list-style-type: none"> • Start of test pile program • Start of marine bulkhead construction

Recently Completed Activities

For the Long Bridge South Package, geotechnical borings were conducted throughout the summer in the Potomac River and on land. These site investigations are used to better understand subsurface conditions and inform the final design.

[Ctrl + Click to watch video](#) of the geotechnical investigations.



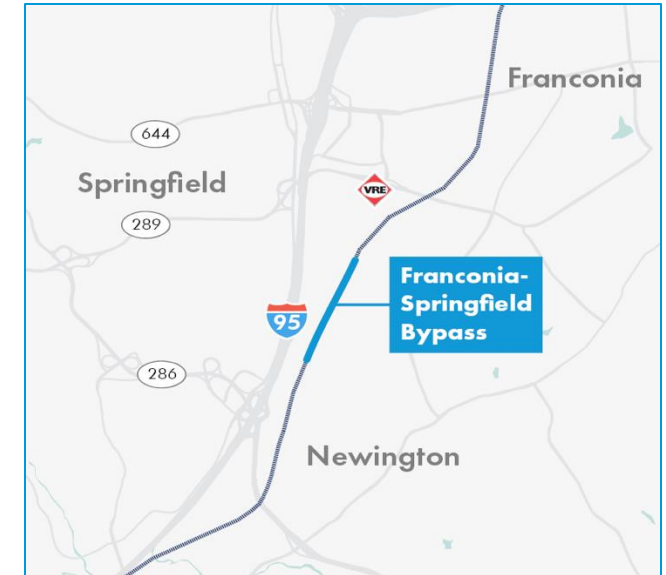


Franconia-Springfield Bypass

Franconia-Springfield Bypass

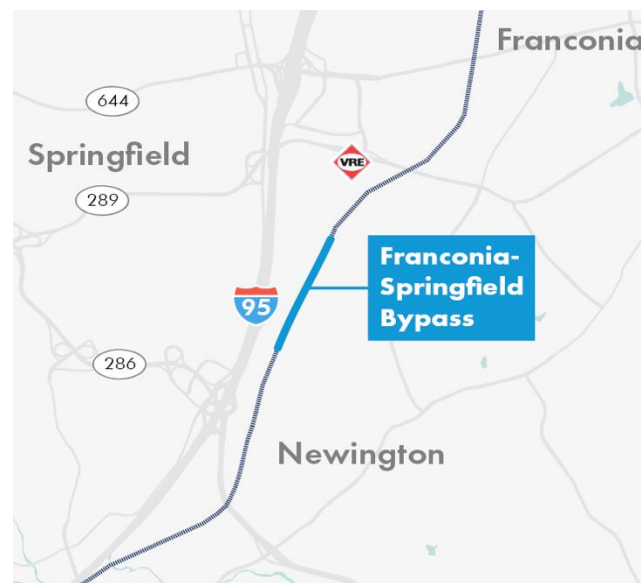
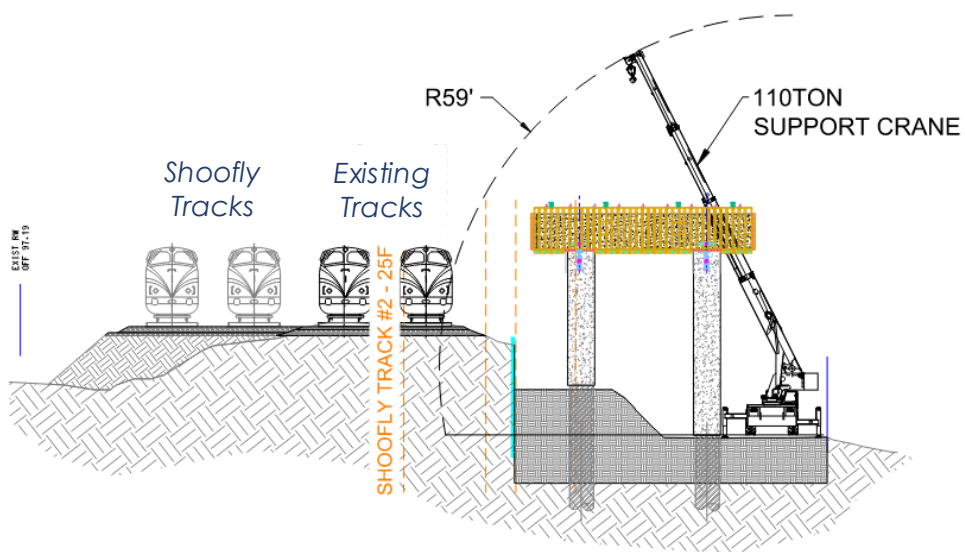
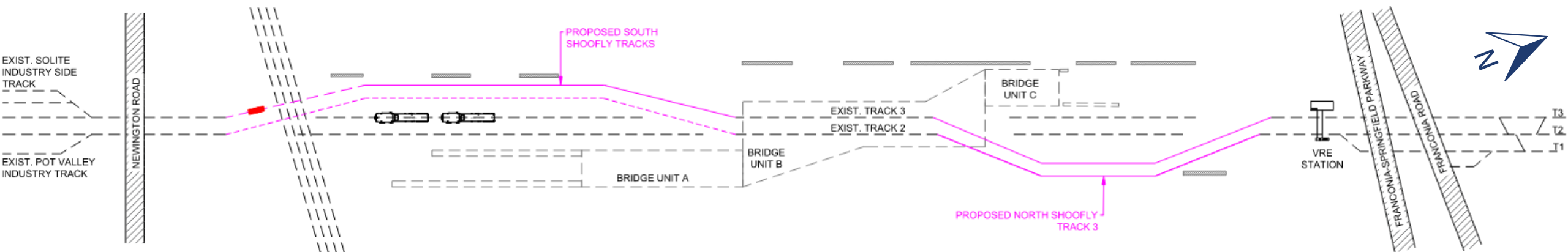
Estimated Completion	2029
Budget	\$532 M
VPRA's Contractor	Flatiron-Herzog Joint Venture (FHJV)

- VPRA issued NTP to FHJV in late June to mobilize for shoofly construction.
- CSX and VPRA executed the Project Addendum Agreement in August, which allowed all construction activities to proceed.



Recently Completed	Ongoing	Upcoming
<ul style="list-style-type: none"> • Contractor mobilization of initial equipment and materials • Project kickoff and initial site walk with Virginia DEQ for Construction General Permit 	<ul style="list-style-type: none"> • Brush clearing and site surveys • Continued delivery of early construction equipment • Utility surveys 	<ul style="list-style-type: none"> • Erosion and sediment controls • Noise and vibration monitoring installation • Temporary drainage installation • Railroad crossings for construction vehicles

Shoofly tracks will be constructed to re-route both mainline tracks, which will reduce disruptions to construction activities.



Ongoing

FHJV started mobilizing on site in late August to begin clearing for site access, delivery of early construction equipment, and land surveying activities.

Subcontractors and materials are being procured for installing erosion and sediment controls, grading, and drainage.



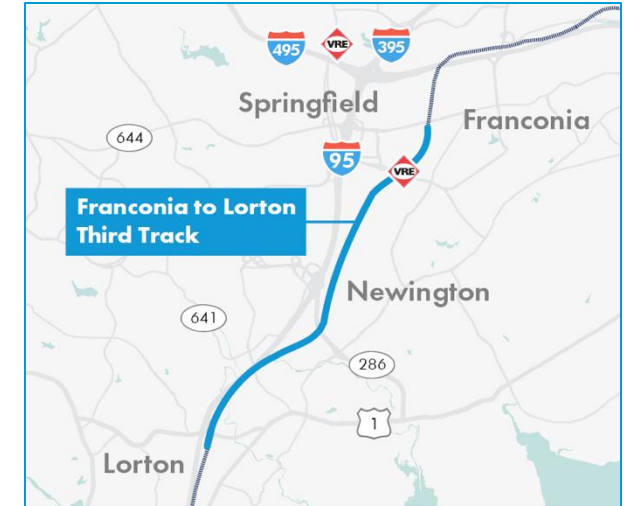


Franconia to Lorton Third Track

Franconia to Lorton Third Track

Estimated Completion	2028
Budget	\$274 M
CSX's Contractor	<i>Contractor selection for full project mid-2026</i>

- Early works construction is ongoing on a new interlocking at the northern limits of the project, which will enable the retirement of the Ravensworth interlocking in early 2026. CSX has delivered track materials. Their subcontractor is clearing the site and installing drainage infrastructure.

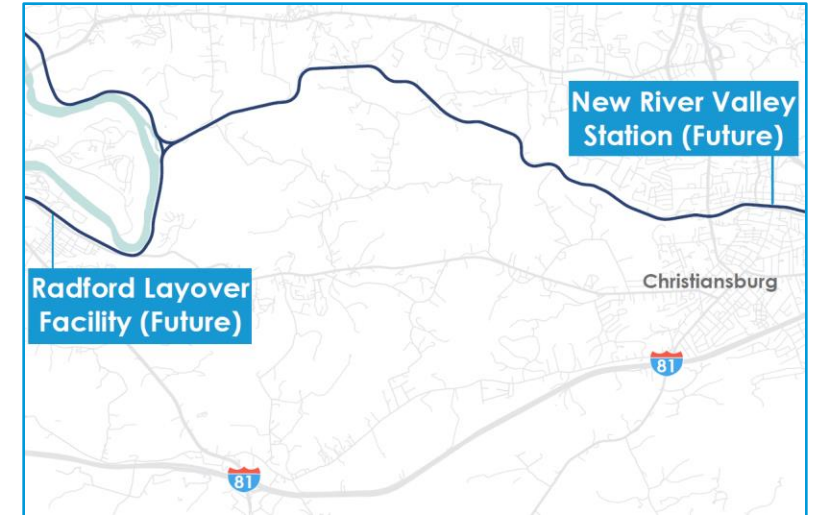




New River Valley Passenger Rail Project

New River Valley Passenger Rail Project

Estimated Completion	2027
Budget	\$73 M
Norfolk Southern's Contractor	Anderzack-Pitzen Construction



- The groundbreaking ceremony was held in April 2025.
- Construction began in April at the Cambria Station Site in Christiansburg and the Layover Facility Site in Radford.

Recently Completed	Ongoing	Upcoming
<ul style="list-style-type: none"> • Station Site <ul style="list-style-type: none"> – Site clearing and grading – Sheet pile wall – NS maintenance-of-way facility – Jack and bore for drainage • Layover Site <ul style="list-style-type: none"> – Site clearing and grading – Sheet pile wall – Light pole foundations & conduits – Relocation of power pole 	<ul style="list-style-type: none"> • Station Site <ul style="list-style-type: none"> – Drilled pier foundations for platform and canopy – Storm sewer installation – Excavation for retaining walls • Layover Site <ul style="list-style-type: none"> – Signals and communications infrastructure – Preparations for laying track – Gas line relocation 	<ul style="list-style-type: none"> • Utility relocations at Station Site and Layover Site • Track installation at Layover Site

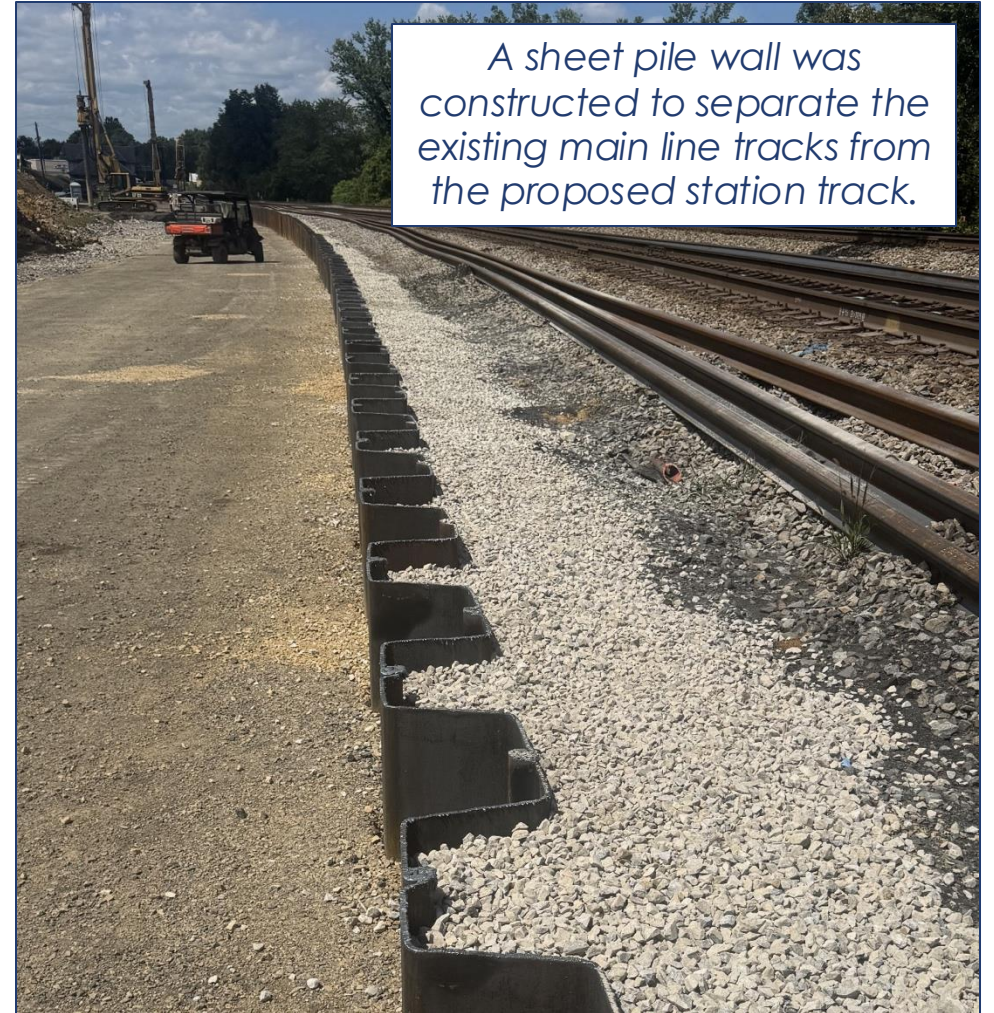
Recently Completed Activities

Cambria Station Site

After the contractor mobilized in April, they began clearing and grading the site. Trees were removed and access roads were constructed.



NS constructed a new maintenance-of-way facility for their crew's day-to-day use. This allowed them to vacate the future station building.



A sheet pile wall was constructed to separate the existing main line tracks from the proposed station track.

Ongoing

Cambria Station Site

Drainage pipes were jack and bored underneath the railroad for site drainage earlier this summer. The jack and bore process allows the pipe to be installed underneath the tracks without disrupting railroad operations.



Storm water infrastructure continues to be installed throughout the site, which will feed through pipes to drain offsite.

Ongoing

Cambria Station Site

The contractor is installing drilled pier foundations for the passenger platform and canopy. There are over 100 pier foundations needed for the project.



Note:
Modifications to the station building will be undertaken by the New River Valley Passenger Rail Station Authority after completion of the NRV station site.

Recently Completed Activities

Radford Layover Site



A sheet pile wall separating the NS yard tracks and proposed layover tracks was completed in June.

These overhead power lines were relocated out of the footprint for the proposed layover tracks.

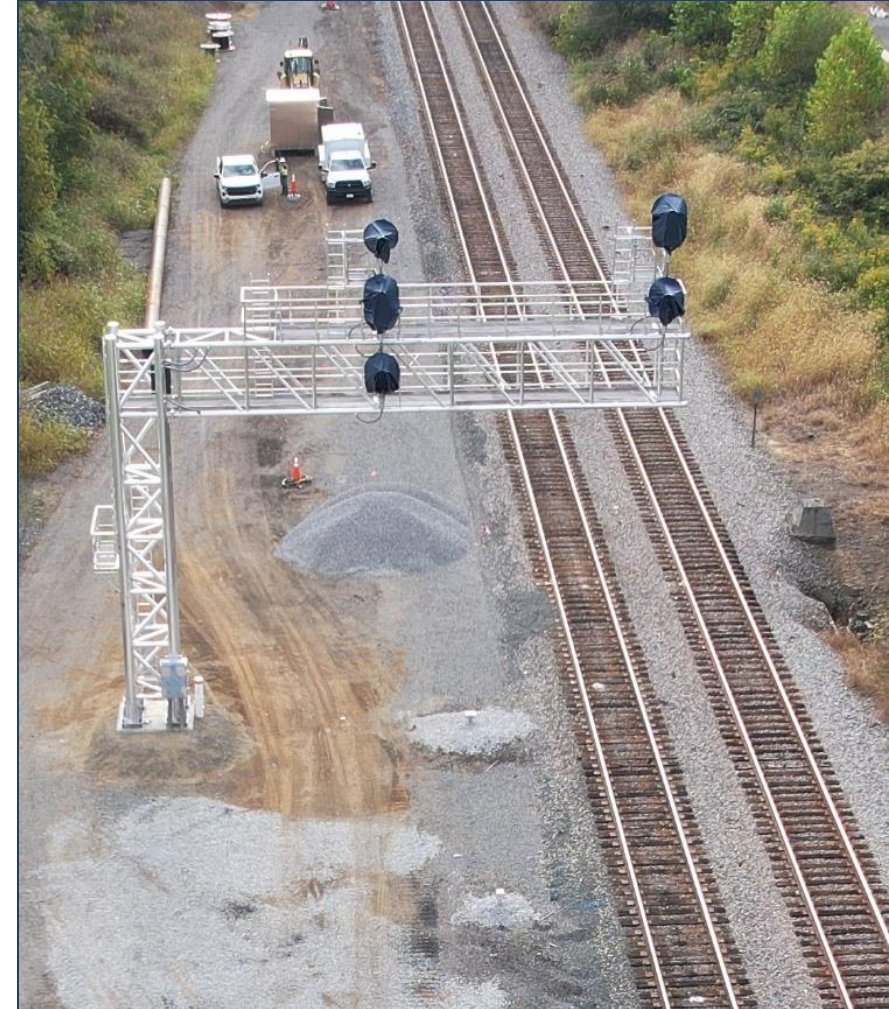
A layover facility is being constructed in Radford for storage and servicing of trains. This facility is where trains will layover before their return trip northbound.



Ongoing

Radford Layover Site

Light pole foundations and electrical conduits have been installed. Preparations are being made for installing track. Gravel sub-ballast is being placed. Rails, cross ties, and switches are being delivered. NS has installed new signals for the proposed layover tracks.





THANK YOU

Questions?